



PROMOVE

DEMOLITION EQUIPMENT



CATALOGUE 

XPline

Hydraulic breakers

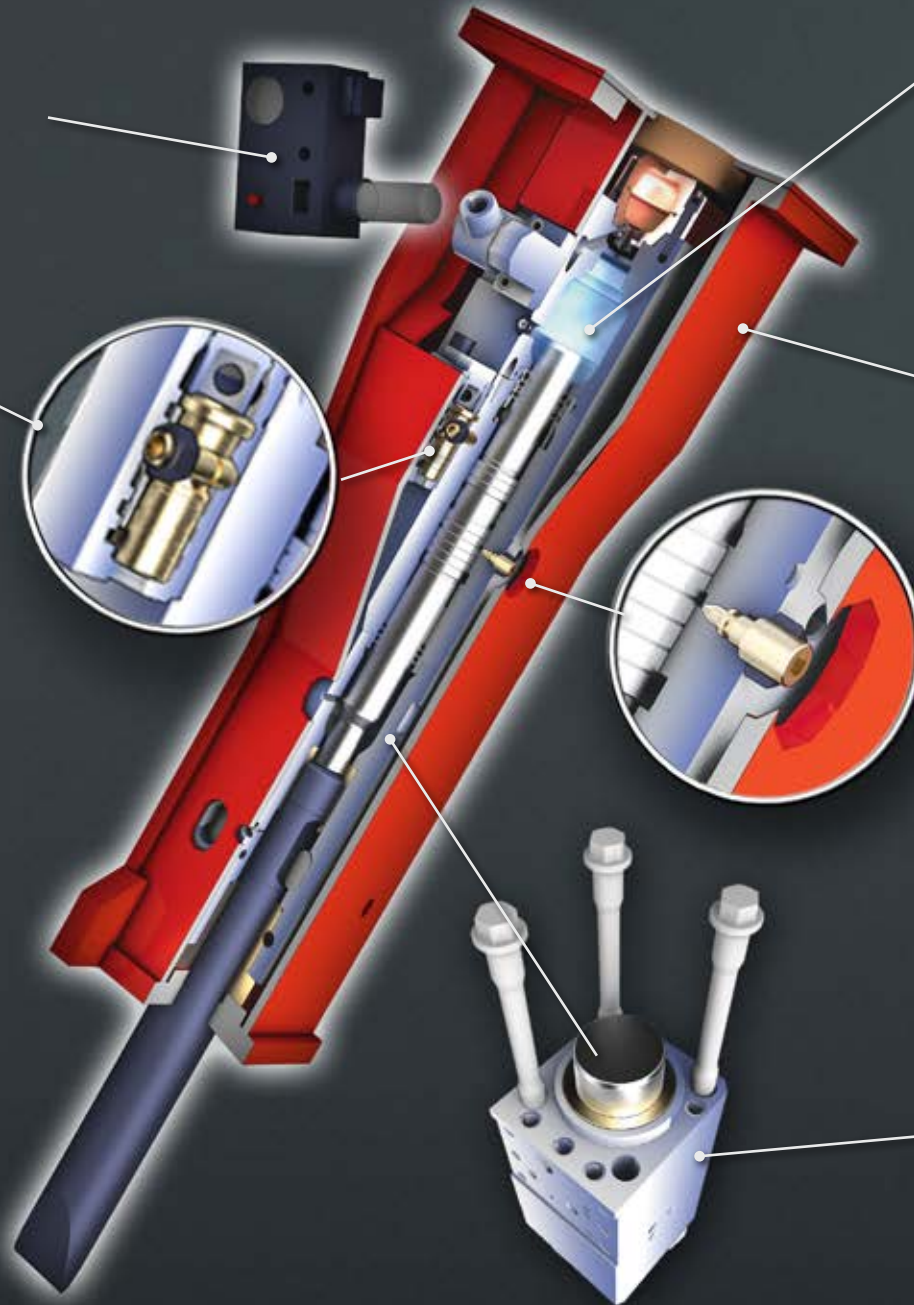
▶ Auto-greasing system (optional) increases productivity, avoids stopping for manual greasing. Quantity of grease supplied can be easily adjusted according to job conditions in order to always deliver the optimal lubrication.

▶ Working pressure adjustment valve

▶ Only two moving parts: piston and distributor valve. Reliability and performance at top level!

▶ Blank firing prevention system: the hammer only starts if pushed on the ground and stops once the rock is broken, avoiding damages to tools, retainers and chuck housing.

▶ No residual blows: the hammer immediately stops firing when oil flow is stopped.



▶ Low-pressure nitrogen chamber over the head of the piston absorbs excessive vibrations returning energy to the percussion.

▶ Silenced casings with internal top, bottom and side shock absorbers completely insulating the power unit. Low noise and vibration level!

▶ Frequency/energy adjustment valve allows regulating the energy of the stroke according to hardness of the rock. The operator can easily set up the hammer to have the appropriate production/speed of work.

▶ Square-section cylinder with fully encased tie-rods: high resistance to stress with extended tie-rods life and reduction of the risk of piston seizures in the case of tie-rod breakage.

CPline

Multi-processing crushers

- ▶ Complete closing of the main body prevents material and bars from entering and damaging internal components.

- ▶ 360° hydraulic-powered rotation on oversized bearing wheel and relief valve.



- ▶ Optimization of the action of the cylinders' power.
- ▶ Changing sets of jaws is a matter of minutes.
- ▶ Low cylinders' oscillation keep momentum and closing force as constant as possible through all the breaking cycle.
- ▶ Exclusive speed valve to maximize working cycles speed.

CRline

Rotating pulverizers

- ▶ Reversible blades.



- ▶ Exclusive speed valve to maximize working cycles speed.
- ▶ One single wide plate firmly holds teeth and front tip, protects the parent jaws from abrasion and is easily replaceable.
- ▶ Oversized Forged Cylinder with seals specifically made to work at very high pressure: outstanding cutting force!
- ▶ Heavy Duty & Oversized Pivot Components well protected against accidental hits.
- ▶ 360° Hydraulic rotation through side gearbox and hydraulic brake: unwanted rotation due to unbalanced load can be avoided.

SCline

Hydraulic shears

- ▶ 360° Hydraulic rotation through side gearbox and hydraulic brake: unwanted rotation due to unbalanced load can be avoided.

- ▶ Exclusive speed valve to maximize working cycles speed.
- ▶ Dual guide with gap-recovery system warrants precise cutting line.



- ▶ Interchangeable Tip: no more weldings, easy replacement.
- ▶ 4-cutting edges fully reversible blades: 4 times usable.

Hydraulic breakers

Light range






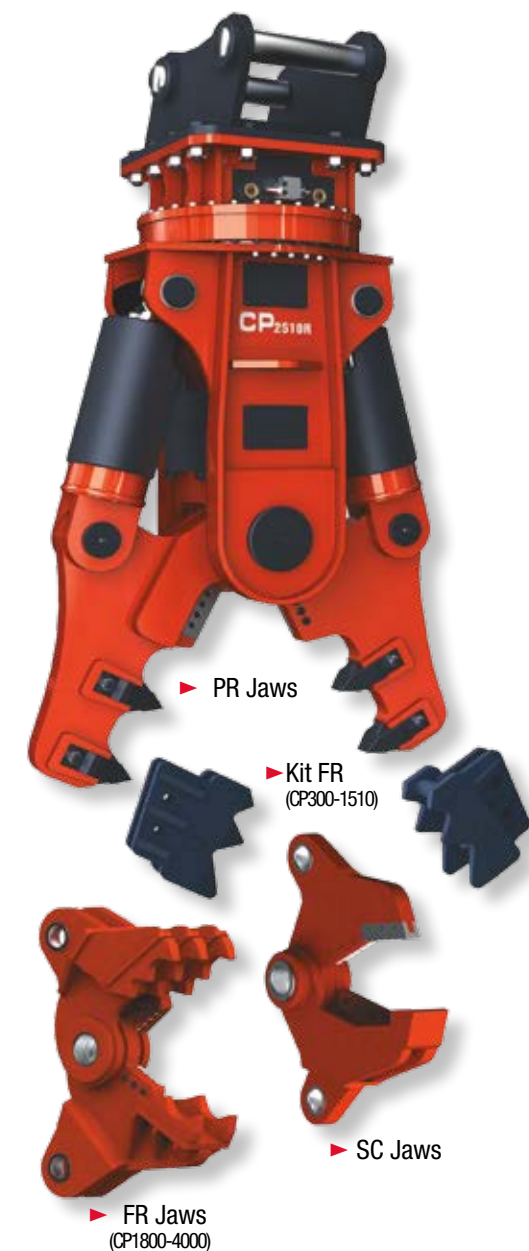
Technical specifications		XP 551	XP 400	XP 300	XP 250	XP 150	XP 101	XP 70
Working weight	Kg	550	430	300	240	160	100	65
	lbs	1210	814	660	528	352	220	143
Working weight PB version	Kg	-	-	295	220	130	90	60
	lbs	-	-	649	484	286	198	132
Carrier's weight (min/max)	ton	6 / 12	5,5 / 10	4,0 / 9,0	3,0 / 5,2	1,8 / 4	1,0 / 2,5	0,8 / 1,8
	lbs	13,200 / 26,400	12,100 / 22,000	8,800 / 19,800	6,600 / 11,440	3,960 / 8,800	2,200 / 5,500	1,760 / 3,960
Total height	mm	1900	1620	1450	1350	1260	1098	870
	in	75	64	57	53	50	43	34.3
Tool diameter	mm	87	80	80	64	56	42	40
	in	3.42	3.15	3.15	2.52	2.20	1.65	1.6
Useful length of standard tool	mm	480	420	420	280	280	260	240
	in	19	17	17	11	11	10	9
Oil flow (min/max)	l/min	70 / 100	60 / 90	50 / 75	30 / 45	15 / 35	15 / 25	8 / 16
	gpm	18 / 26	15.9 / 23.8	13.2 / 19.8	7.9 / 11.9	4.0 / 9.3	4.0 / 6.6	2.1 / 4.2
Working pressure (min/max)	bar	120 / 150	110 / 140	110 / 130	110 / 130	100 / 120	110 / 130	100 / 110
	psi	1740 / 2180	1595 / 2030	1595 / 1885	1595 / 1885	1450 / 1740	1650 / 1950	1450 / 1595
Blows per minute (min/max)	1/min	530 / 750	540 / 860	480 / 900	700 / 1250	600 / 1380	560 / 1700	870 / 1450
Impact energy	joule	1550	1020	870	425	290	200	130
	ftxlbs	1700	753	642	313	213	150	96
Max Back Pressure	bar	25	25	25	25	25	25	25
	psi	363	363	363	363	363	363	363



PB versions feature two-sided casings with direct fit on the stick trough pins & bushings

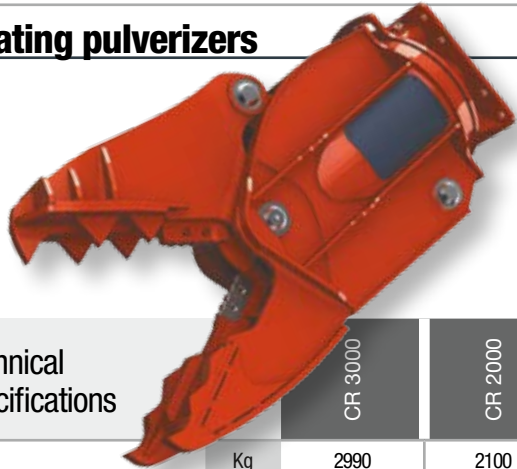
Multi-processing crushers

Technical specifications		CP 4000	CP 2900	CP 2510	CP 1800	CP 1510	CP 1000	CP 300	
Working weight	Kg	3950	3000	2500	1800	1500	1000	380	
	lbs	8690	6600	5500	3960	3300	2200	836	
Carrier's weight (min/max)	t	34 / 55	28 / 45	23 / 38	18 / 26	15 / 25	10 / 18	2 / 10	
	lbs	74800 / 121000	61600 / 99000	50600 / 83600	39600 / 57200	33000 / 58500	22000 / 39600	4400 / 22000	
Cylinder force	t	140	130	115	98	76	50	22	
	lbs	308000	286000	253000	215600	167200	110000	48400	
Cylinders working Pressure	bar	350	350	350	350	320	300	250	
	psi	5075	5075	5075	5075	4640	4350	3625	
Cylinders oil flow	l/min	300 / 350	250 / 300	170 / 250	150 / 200	100 / 180	60 / 120	30 / 50	
	gpm	79 / 92	66 / 79	42.3 / 58.2	39.6 / 52.9	26.5 / 47.6	18.5 / 32	8 / 13.3	
Rotation engine pressure max	bar	120	120	100	120	100	100	80	
	psi	1740	1740	1450	1740	1450	1450	1160	
Rotation oil flow	l/min	40 / 50	20 / 30	10 / 15	20 / 30	10 / 12	10 / 12	2 / 3	
	gpm	10 / 13	5 / 8	2.64 / 3.96	5 / 8	2.64 / 3.17	2.64 / 3.17	0.26 / 0.53	
Jaws Max Opening	PR	mm	1230	1130	880	750	800	620	430
		in	48.42	44.48	34.64	29.52	31.50	24.41	16.93
	SC	mm	580	550	500	340	400	330	220
		in	22.83	21.67	19.68	13.38	15.70	12.99	8.66
	FR	mm	990	880	690	580	700	560	420
		in	39	34.64	27.16	22.83	27.56	22.05	16.53
Total height	mm	2600	2370	2650	1930	1800	1500	1100	
	in	102.36	93.30	104.33	75.98	70.87	59.06	43.31	
360° Rotation		Hydraulic	Hydraulic	Hydraulic	Hydraulic	Hydraulic	Hydraulic	Mechanical or Hydraulic	
Cutting data with SC jaws									
	mm	360	320	240	180	140	100	80	
	in	14.1	12.5	9.4	7.1	5.5	3.9	3.1	
	mm	260	240	180	140	120	100	60	
	in	10.2	9.4	7.1	5.5	4.7	3.9	2.35	
	mm	65	60	50	40	40	35	30	
	in	2.6	2.4	2.0	1.6	1.6	1.4	1.2	



CRline

Rotating pulverizers






Technical specifications		CR 3000	CR 2000	CR 1800
Working weight	Kg	2990	2100	1800
	lbs	6578	4620	3960
Carrier's weight (min/max)	t	22 / 30	18 / 23	15 / 19
	lbs	48400 / 66000	39600 / 50600	33000 / 41800
Max jaws opening	mm	930	800	700
	in	36.6	31.5	27.5
Useful jaws length	mm	940	840	720
	in	37	33.1	28.37
Jaws length min/max	mm	290 / 455	290 / 455	260 / 404
	in	11.43 / 17.93	11.43 / 17.93	10.24 / 15.92
Closing force at the tip	t	105	80	65
	lbs	231483	176370	143300
Closing force at blades	t	260	234	195
	lbs	573200	515880	429900
Rotation oil flow	l/min	20 / 30	20 / 30	20 / 30
	gpm	5 / 8	5 / 8	5 / 8
Rotation pressure	bar	120	120	120
	psi	1740	1740	1740
Open/close flow	l/min	250 / 300	180 / 230	140 / 200
	gpm	66.1 / 79.36	47.6 / 60.8	37 / 52.9
Open/close pressure	bar	350	350	350
	psi	5072	5072	5072
360° Rotation		Hydraulic	Hydraulic	Hydraulic

SCline

Hydraulic shears



Technical specifications		SC 9500	SC 7500	SC 6000	SC 4500	SC 3000	SC 2200	SC 1900
Working weight	Kg	9500	7600	6000	4500	3000	2500	1900
	lbs	20900	16720	13200	9900	6600	5500	4180
Carrier's weight (arm)	t	90 / 110	75 / 100	50 / 75	44 / 50	28 / 35	21 / 30	15 / 23
	lbs	19800 / 242000	165000 / 220000	110000 / 165000	96800 / 110000	61600 / 77000	46200 / 66000	33000 / 50600
Carrier's weight (boom)	t	55 / 110	45 / 100	35 / 75	30 / 50	18 / 35	12 / 30	9 / 23
	lbs	121000 / 242000	99000 / 220000	77000 / 165000	110000 / 66000	39600 / 77000	26400 / 66000	19800 / 50600
Max jaws opening	mm	985	880	840	700	585	470	420
	in	38.81	34.6	33.1	27.1	23.05	18.52	16.55
Rotation oil flow	l/min	80 / 100	40 / 50	40 / 50	40 / 50	40 / 50	20 / 30	20 / 30
	gpm	21.10 / 26.40	10.50 / 13.20	10.50 / 13.20	10.50 / 13.20	10.50 / 13.20	5.30 / 7.90	5.30 / 7.90
Rotation pressure	bar	120	120	120	120	120	120	120
	psi	1740	1740	1740	1740	1740	1740	1740
Open/close flow	l/min	600 / 1000	500 / 800	400 / 600	350 / 500	280 / 350	200 / 300	150 / 250
	gpm	158.7 / 264.6	132.2 / 211.6	105.8 / 158.7	92.6 / 132.3	74.1 / 92.6	52.9 / 79.4	39.7 / 66.1
Open/close pressure	bar	350	350	350	350	350	350	350
	psi	5075	5075	5075	5075	5075	5075	5075
Rotation		360°	360°	360°	360°	360°	360°	360°
Cutting data								
	mm	700	620	540	480	420	300	240
	in	27.5	24.4	21.2	18.8	16.5	11.8	9.5
	mm	500	420	360	320	260	200	160
	in	19.6	16.5	14.1	12.5	10.2	7.8	6.3
	mm	140	130	110	85	70	60	50
	in	5.5	5.1	4.3	3.3	2.7	2.3	1.9

PROMOVE

DEMOLITION EQUIPMENT



PROMOVE s.r.l. Zona Industriale Lotto CA 2 Italia – 70056 – Molfetta – Bari
phone +39.0803387054 fax +39.0803387004 info@promove.it www.promove.it

Promove constantly invests in research and development to improve quality and performance of its products. Therefore, technical specifications may be changed at any time without notice.



Rev.02 - 03.2013