

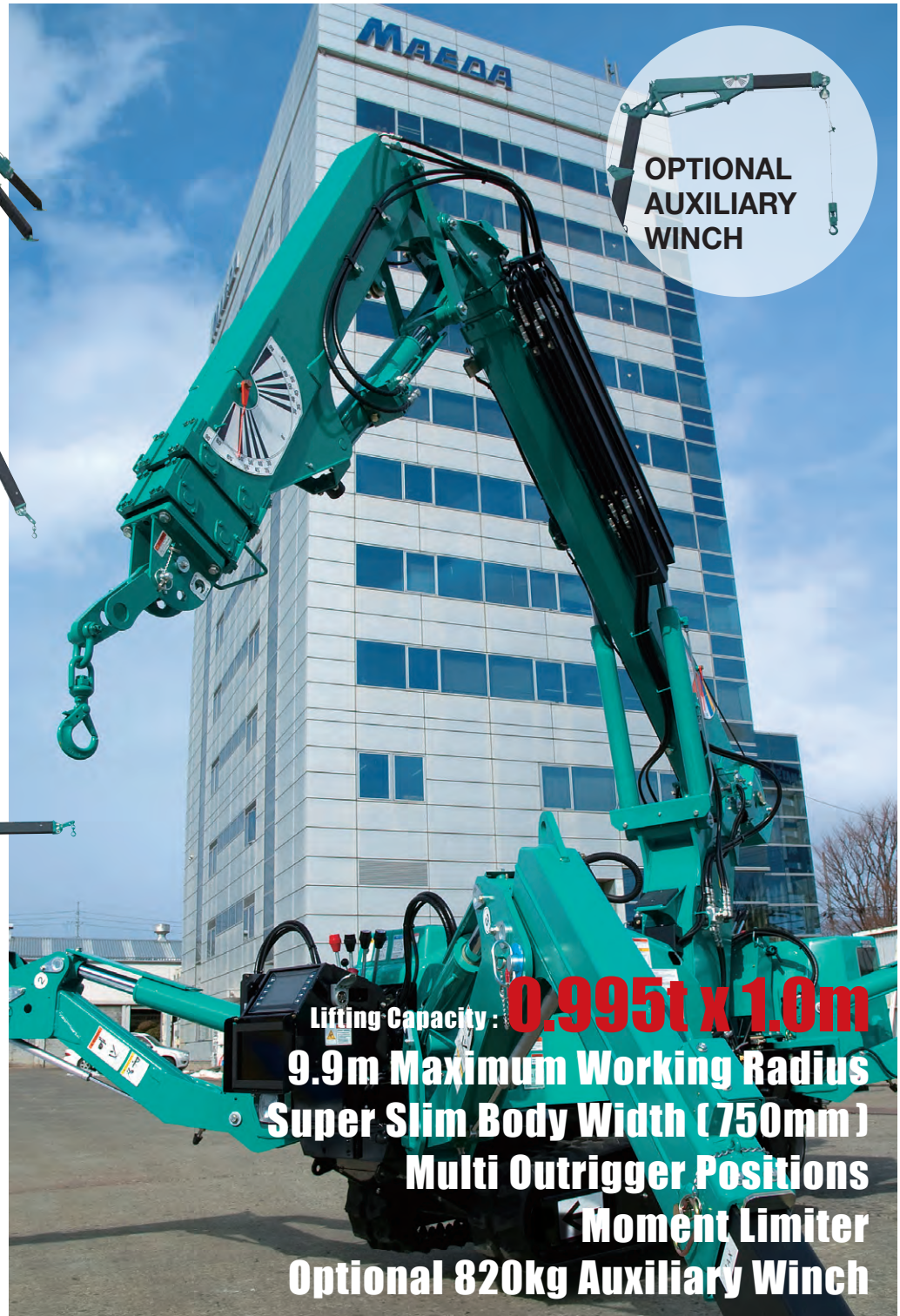


KNUCKLE

PROVISIONAL

MK1033CW-1

BOOM



OPTIONAL
AUXILIARY
WINCH

Lifting Capacity : **0.995t x 1.0m**
9.9m Maximum Working Radius
Super Slim Body Width (750mm)
Multi Outrigger Positions
Moment Limiter
Optional 820kg Auxiliary Winch

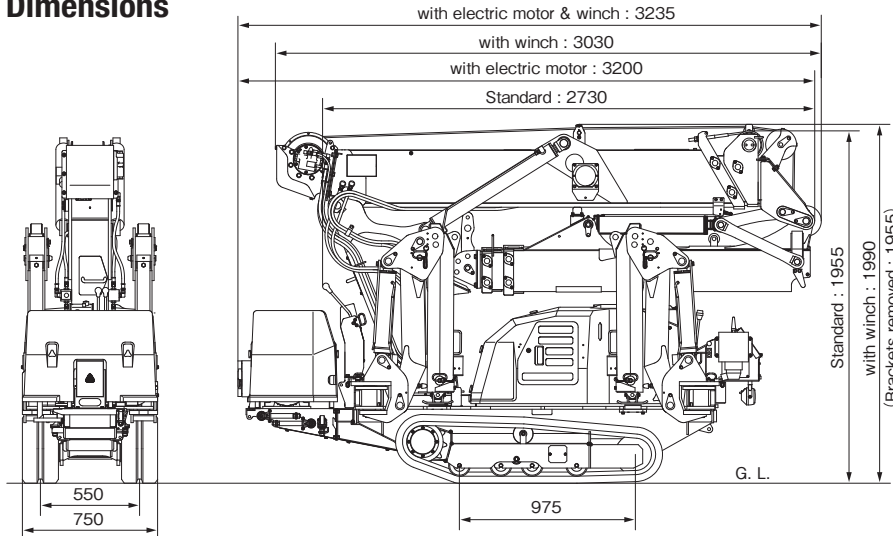
New Concept Mini Crane **KNUCKLE BOOM MK1033CW-1**

Specifications

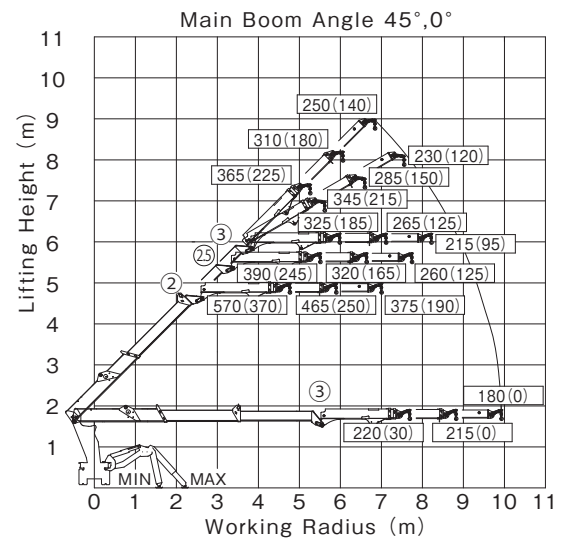
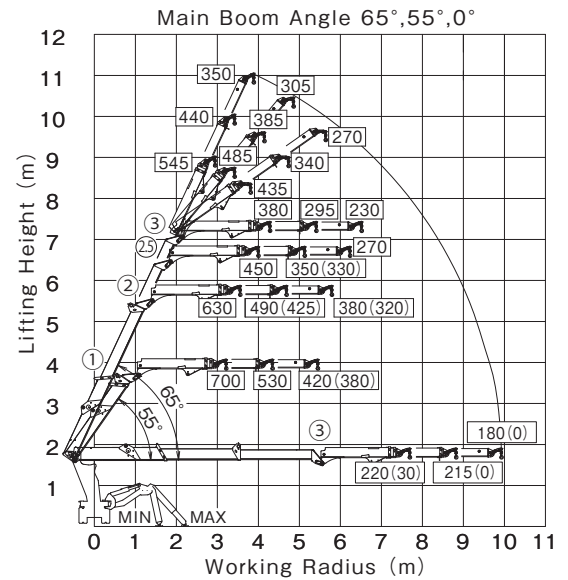
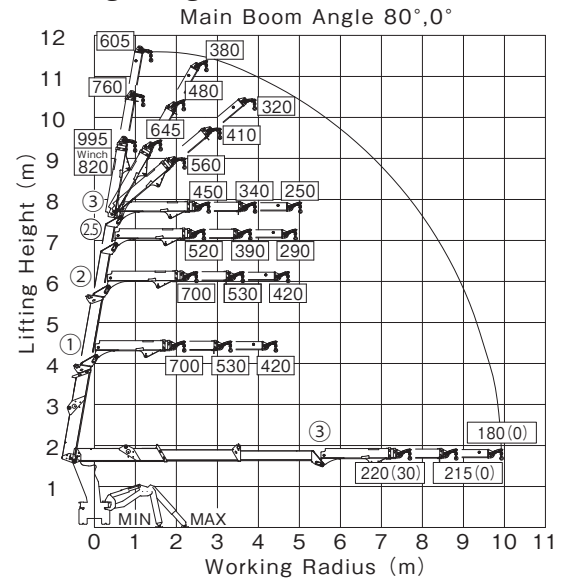
Model		MK1033CW-1	
Crane capacity		0.995t × 1.0m	
Max. working radius		9.9m	
Max. lifting height (on the ground)		11.3m	
Max. lifting height (underground) (optional winch)		-66.5m (singlefall)	
Main boom	Telescoping system	Type	Fully automatic 3-section pentagonal telescopic boom (2 and 3 section : simultaneous telescoping)
		Boom length	2.600m-6.040m
		Boom telescoping stroke / time	0.17m/sec
Boom hoist system		Hoist angle 0 to 80deg	
Jib	Telescoping system	Type	Fully automatic 3-section pentagonal telescopic jib
		Jib length	2.140m-4.375m
		Jib telescoping stroke / time	0.15m/sec
Jib hoist system		Hoist angle 0 to 183deg	
Swing system		Swing angle / time 360deg/0.5rpm	
Winch system (Optional)		Hook speed	22.2m/min (4 layers, single fall)
		Hoist wire rope	IWRC 6 X WS (29) 0/0, φ8×73.0m
Outrigger system		Type	1st stage with flexible stay damper, 2nd stage manual pullout hydraulic cylinder direct acting type
		Max. extended width	(Lateral) 4,580mm×(Front) 4,530mm×(Rear) 3,810mm
		Extended position	Multi
Travel system		Type	Hydraulic motor driven , stepless speed changer
		Travel speed	0-2.0km/h
		Gradability	15deg
		Crawler ground length x width	975mm × 200mm
		Ground pressure	52.8kpa[0.54kgf/cm ²] (MK1033CWEH-1: 59.8kpa[0.61kgf/cm ²])
Engine		Model	YANMAR 2TNV70-NMBA
		Displacement	0.569L[569cc]
		Rated output	7.4/2,500[10.1/2,500]
		Starting method	Electric starting
		Fuel / Fuel tank capacity	Diesel/12.0L
		Type	Self detachable
Electric Motor (MK1033CWE-1)		Motor type	Totally enclosed fan-cooled motor 5.5kw, 4P 380V
		Starting system	Inverter system (30Hz-60Hz)
Remote control system		Type	Radio & Proportional control
		Micro speed mode	Available
		Outrigger operation	Available
Overall length × width × height (MK1033CW-1)		2,730mm × 750mm × 1,955mm	
Overall length × width × height (MK1033CWH-1)		3,030mm × 750mm × 1,990(1,955)mm *	
Overall length × width × height (MK1033CWE-1)		3,200mm × 750mm × 1,955mm	
Overall length × width × height (MK1033CWEH-1)		3,235mm × 750mm × 1,990(1,955)mm *	
Machine weight (MK1033CW-1)		2,110kg (2,000kg) *	
Machine weight (MK1033CWH-1)		2,190kg	
Machine weight (MK1033CWE-1)		2,290kg	
Machine weight (MK1033CWEH-1)		2,370kg	
Safety device		Level, Machine body inclination alarm, EMO switch, Hydraulic safety valves, Overwind protection, Wire rope latch Crane/Outrigger interlock device Moment limiter, Data logger	
Optional equipment		Winch (single fall), White rubber tracks	

*Some components need to be removed.

Dimensions



Working Range



Before use, please read the Operation Manual

Due to improvements, the specifications are subject to change without notice.



MAEDA SEISAKUSHO CO.,LTD.

No.1095, Onbegawa, Shinonoi, Nagano-City, Nagano-Pref, 388-8522 Japan
 Head office TEL. +81 (0)26 292 2228 FAX. +81 (0)26 293 8499
 URL: <http://www.maesei.co.jp/> E-mail: maedasp@maesei.co.jp