

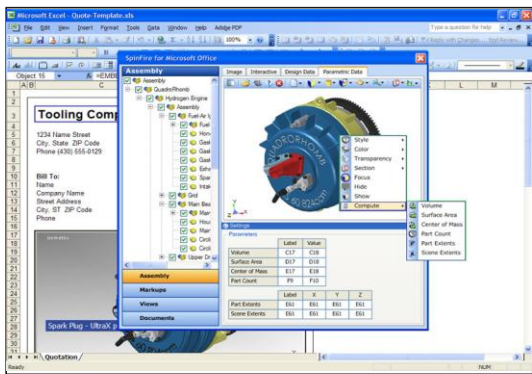


# SpinFire for Microsoft Office

## SpinFire for Microsoft Office

### Benefits Review

- Leverage 2D and 3D CAD documents throughout the enterprise and supply chain by taking advantage of Office's universal usage
- Enhance document's value- for greater clarity and understanding, incorporate interactive 2D and 3D design data that might otherwise be unclear or lost
- Increase productivity and cut costs- share CAD data without native CAD system access
- Ensure data accuracy by reusing source CAD file data
- Create PDF 1.6 documents containing interactive Universal 3D (U3D) content- with one click



*Now deliver design data, 2D and 3D CAD information to virtually any enterprise and supply chain desktop*

SpinFire for Microsoft Office maximizes the value of design data by enabling users to easily incorporate 2D and 3D design models, drawings, and data within Microsoft Office documents.

What's more, design data can be highly interactive, allowing rotating, panning, zooming, changing views, and much more to improve documents' clarity and usefulness. And, due to Office's near- universal acceptance, SpinFire for Microsoft Office also facilitates the distribution of relevant CAD data to any Office user who needs it, without traditional CAD access bottlenecks.

Installed as an integrated application within Office, SpinFire for Microsoft Office eliminates the need to access native CAD files. Instead, it leverages Actify's compressed .3D file format to communicate CAD information in Word, Excel, and PowerPoint documents as well as in Outlook emails. Plus, using an optional product add-on\*, it can create PDF 1.6 files from Word, Excel and PowerPoint documents that contain interactive U3D content.

### SpinFire for Microsoft Office Features

*Fast, widespread access to design data*

SpinFire for Microsoft Office enables users to embed static and interactive 3D and 2D design data directly into Word, Excel, PowerPoint documents and Outlook emails. Now, knowledge workers throughout the enterprise and supply chain can easily obtain and use CAD data for their individual purposes.

*SpinFire for Microsoft Office allows users to easily interact with CAD models to manage the view of the image that is embedded into the Office document. Users can modify colors and shading with rendering modes; modify the views with zoom, rotate and pan; section the model, and much more.*

## Present Design Data in Four ways

**(1) Interactive 3D Models:** Embed 3D and 2D models in Office documents where knowledge workers can manipulate dimension, cross-section, rotate, explode an assembly, and much more for exceptional communication and document comprehension. As a result, requests for information/quote forms, assembly instructions, user manuals, and the like, are all much more useful and easier to understand. Once documents are created with SpinFire for Microsoft Office, anyone can interact with the embedded .3D files by using SpinFire for Microsoft Office or SpinFire Reader.

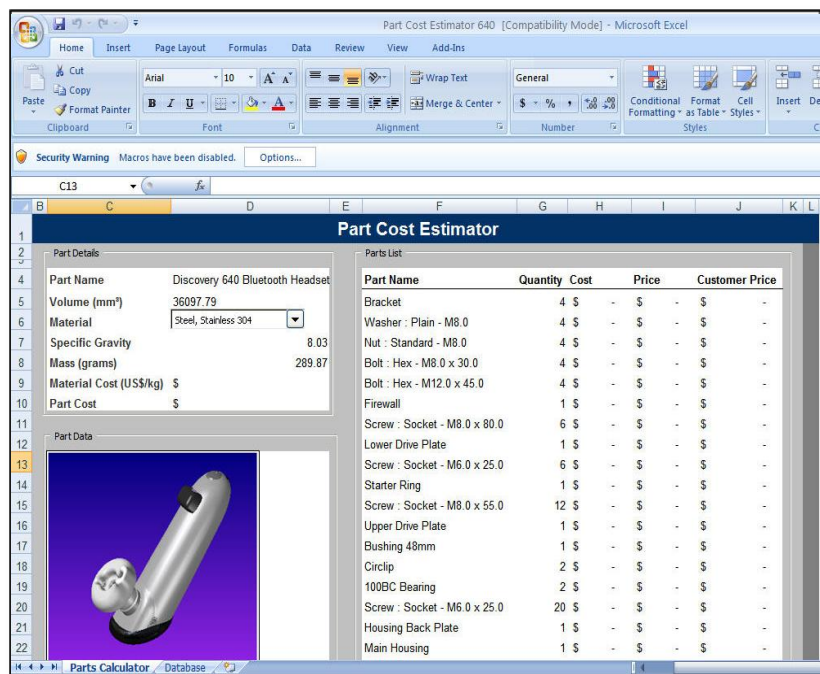
**(2) Static Images:** Users can produce a bitmap or vector image of desired views from the CAD geometry. Images can then be inserted in Office documents including work orders, specifications, marketing collateral, and more in any size and resolution.

**(3) Design Data:** Users can extract data from the CAD model, plus format and insert text-based design (meta) data, such as assembly and parts lists, bills of materials, mark-up notes, and dimensions into Office documents.

**(4) Computed Data:** Insert part information (such as volume, surface and center of mass) into cells or a range of cells in Excel worksheets by computing it on demand. In computing data on the fly and not requiring the .3D file to contain the computed data as an existing markup, users are free to extract additional information from the file that was not originally provided to them as a markup.

### Greater Data Accuracy

SpinFire for Microsoft Office ensures data accuracy by leveraging product data directly from CAD files and inserting it into Office documents eliminating the possibility of manual entry errors. It also minimizes the possibility of synchronization issues. As a result,



Part Name	Quantity	Cost	Price	Customer Price
Bracket	4	\$ -	\$ -	\$ -
Washer : Plain - M8.0	4	\$ -	\$ -	\$ -
Nut : Standard - M8.0	4	\$ -	\$ -	\$ -
Bolt : Hex - M8.0 x 30.0	4	\$ -	\$ -	\$ -
Bolt : Hex - M12.0 x 45.0	4	\$ -	\$ -	\$ -
Firewall	1	\$ -	\$ -	\$ -
Screw : Socket - M8.0 x 80.0	6	\$ -	\$ -	\$ -
Lower Drive Plate	1	\$ -	\$ -	\$ -
Screw : Socket - M6.0 x 25.0	6	\$ -	\$ -	\$ -
Starter Ring	1	\$ -	\$ -	\$ -
Screw : Socket - M8.0 x 55.0	12	\$ -	\$ -	\$ -
Upper Drive Plate	1	\$ -	\$ -	\$ -
Bushing 48mm	1	\$ -	\$ -	\$ -
Circlip	2	\$ -	\$ -	\$ -
100BC Bearing	2	\$ -	\$ -	\$ -
Screw : Socket - M6.0 x 25.0	20	\$ -	\$ -	\$ -
Housing Back Plate	1	\$ -	\$ -	\$ -
Main Housing	1	\$ -	\$ -	\$ -

*A cost estimator has leveraged the assembly tree directly from the CAD data to insert a complete parts listing into his estimate template. He has also embedded an interactive .3D file to visually clarify each part listed.*

SpinFire for Microsoft Office builds workers' confidence in documents as it makes each document more valuable as a reliable information source.

### Significantly Improve Productivity

Since SpinFire for Microsoft Office eliminates the need for native CAD file access, and CAD operators are no longer burdened with the task of providing data, projects can constantly move forward. Instead of stalling as people wait for design data, productivity across the enterprise escalates for knowledge workers, CAD operators, everyone. SpinFire for Microsoft Office's easy-to-use, intuitive interface further improves efficiency by facilitating access to all the software's available functionality.

### Exciting new clarity, by adding CAD images and data

The ability to include interactive images increases the ability of conveying a clear message - design data that may be unclear or lost in a static image.

SpinFire for Microsoft Office vastly improves Office applications' communication ability, while improving readers' comprehension, by incorporating illustrative images and design data in documents and presentations. Extensive visualization tools enable users to mine the value of the data even more, by interactively investigating 3D and 2D CAD information themselves using only Office.

For example, instead of working with static images, PowerPoint users can rotate images, set up viewpoints, explode sequences, and run cross-sections using embedded interactive images. Excel users, too, can insert computed values (such as volume, surface area, center of mass, and part count, performed on demand) to specific worksheets and cell references, as well as Bill of Materials, Assembly Structure and Markup dimensions.

### To Order of Learn More

Contact your local Actify Reseller, email Actify at [sales@actify.com](mailto:sales@actify.com), or visit our Web site at [www.actify.com](http://www.actify.com).

Actify's technology represents the most advanced tools available in Digital Design Communication. Using Actify's compact and secure .3D format, users can access, publish, store, view, mark-up, share, and distribute 2D/3D CAD files throughout your global enterprise and worldwide supply chains, easily and securely. Actify Solutions are made possible through partnerships with Microsoft, Adobe, and AirZip.