

RPA 2000™

Rubber Process Analyzer

- ◆ Measures dynamic properties of raw elastomers or mixed rubber before cure, during cure or post-cure – cure tests, sweep tests, stress relaxation tests.

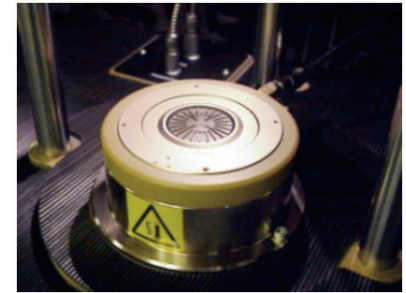


ALPHATECHNOLOGIES

Testing Features



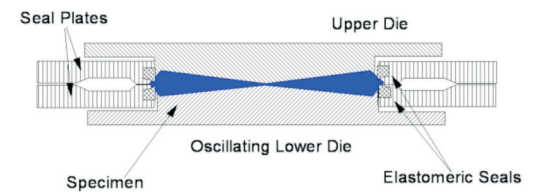
- Measures dynamic properties of raw elastomers or mixed rubber
- Cure tests, sweep tests, stress relaxation tests
- Sealed biconical dies
- Low friction reaction torque measurement
- Superb temperature stability and control with cooling
- Repeatable and reproducible data
- Enterprise Pathfinder software simplifies test setup and SPC control of processes
- System can be automated to test up to 100 samples



Performance



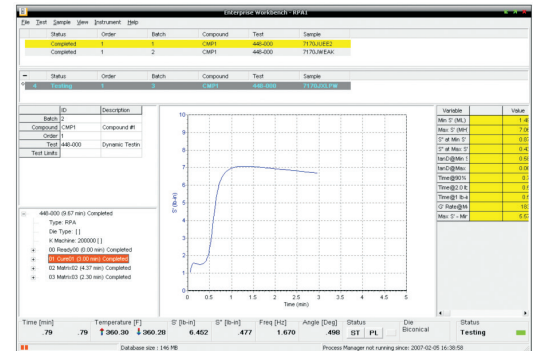
- Measure dynamic properties of rubber before cure, during cure or post-cure
- Characterize raw polymers
- Excellent test sensitivity to mixing errors or compound changes
- Limited operator influence
- Excellent repeatability
- Suitable for quality control or research and development
- Used as a world standard by many international organizations



Options



- Automation (10 or 100 samples)
- Pressure transducer
- Extended Dynamic Range (EDR) for improved torque sensitivity
- Large Amplitude Oscillatory Shear (LAOS) for measurement of Long Chain Branching (LCB)
- PRPA2000™ model with production cabinet and 5-sample queuing
- Sample cutter Model 2000R for rubber
- Wide Assortment of films for different applications
- Interface to Eclipse software system for handling historical data



Specifications



FREQUENCY:	0.1 to 3000 cpm (0.0016 to 50 Hz)	TESTING STANDARDS:	Meets ASTM D5289, D6048, D6204, D6601, D7050, D8059, and D7605
TEMPERATURE RANGE:	Ambient to 230°C	REPORTS AND EXPORT FILES:	Numerous formats including text and Microsoft Excel © Files
MAX RAMP RATE:	1 C/s	INSTRUMENT LANGUAGES:	Multiple
MAX COOL RATE:	0.5 C/s	ELECTRICAL:	• 100/110/120/130 VAC ±10%, 60 ±3 Hz, 10-amp single phase • 200/220/240/260 VAC ±10%, 50 ±3 Hz, 5-amp single phase
STRAIN:	±0.07% to ±1255% (±0.005 to ±90 degrees)	AIR PRESSURE:	80 psi (5.6 kg/cm ² 551 kPa) minimum
MEASURED DATA:	S* torque, temperature, frequency, strain	DIMENSIONS:	Width 68 cm (27 in), height 132 cm (52 in), depth 76 cm (30 in)
CALCULATED DATA:	G', G'', J', J'', J*', J'', S', S'', tanδ, η', η'', and η* SQL	WEIGHT:	Net 177 kg (389 lb), gross 280 kg (616 lb)
DATA STORAGE:	database		

