

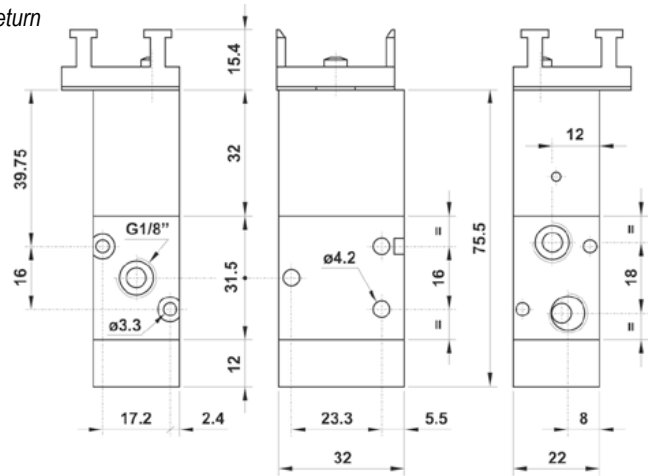
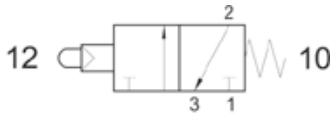
Vannes à poussoir G1/8"

manually actuated valves

321 MB

Vanne 3/2NF à poussoir servopiloté pour boutons de commande en montage panneau, raccordement G1/8"

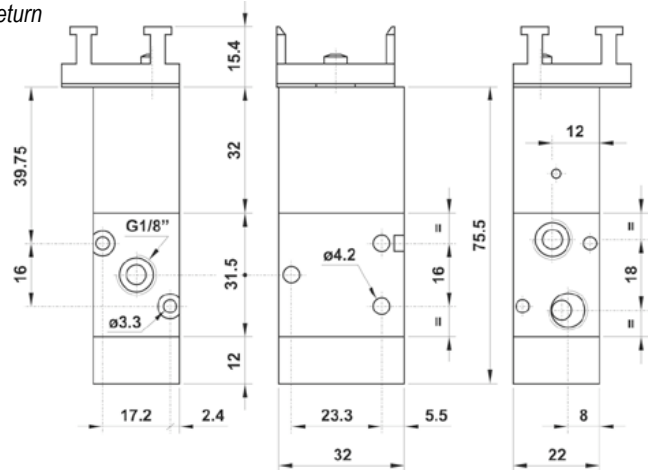
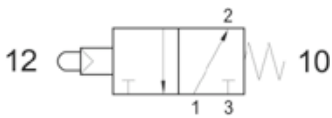
3/2 1/8" NC servo-piloted tappet with actuator adaptor for panel mounting - spring return



321 MBA

Vanne 3/2NO à poussoir servopiloté pour boutons de commande en montage panneau, raccordement G1/8"

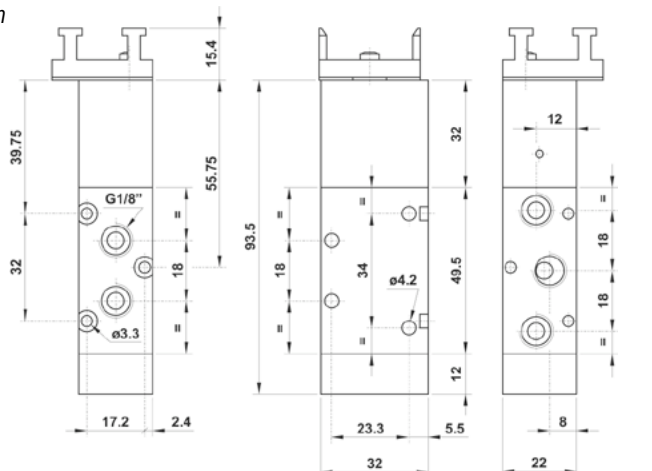
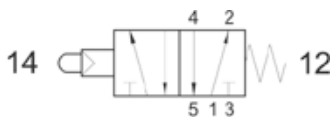
3/2 1/8" NO servo-piloted tappet with actuator adaptor for panel mounting - spring return



521 MB

Vanne 5/2 à poussoir servopiloté pour boutons de commande en montage panneau, raccordement G1/8"

5/2 1/8" servo-piloted tappet with actuator adaptor for panel mounting - spring return



Vannes à à poussoir G1/8"

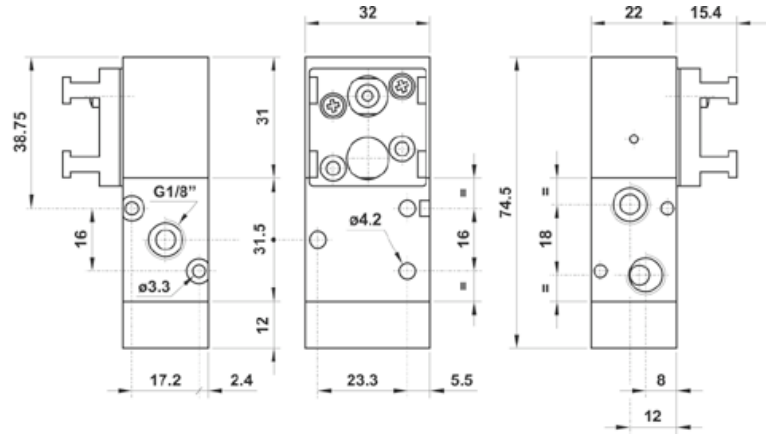
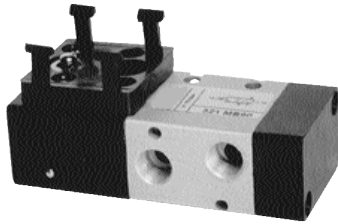
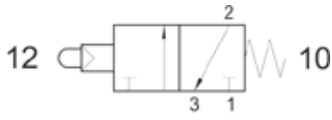
manually actuated valves

Sopra
Pneumatic Advanced Systems

321 MB90

Vanne 3/2NF à poussoir servopiloté (à 90°) pour boutons de commande en montage panneau, raccordement G1/8"

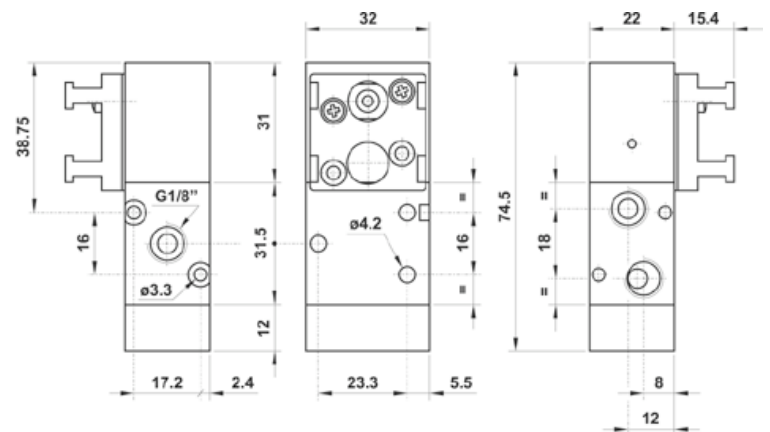
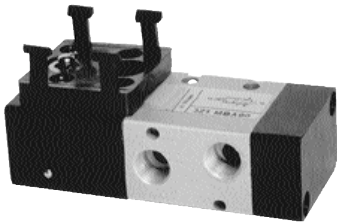
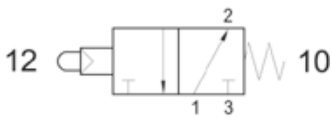
3/2 1/8" NC servo-piloted tappet with 90° actuator adaptor for panel mounting - spring return



321 MBA90

Vanne 3/2NO à poussoir servopiloté (à 90°) pour boutons de commande en montage panneau, raccordement G1/8"

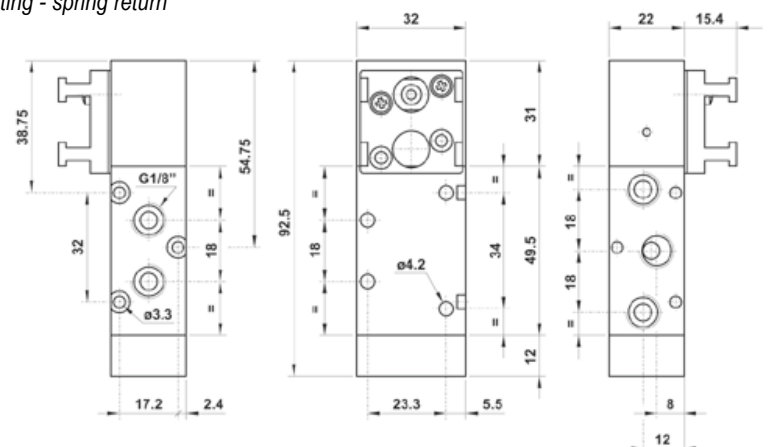
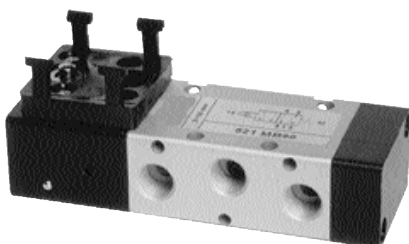
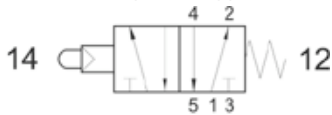
3/2 1/8" NO servo-piloted tappet with 90° actuator adaptor for panel mounting - spring return



521 MB90

Vanne 5/2 à poussoir servopiloté (à 90°) pour boutons de commande en montage panneau, raccordement G1/8"

5/2 1/8" servo-piloted tappet with 90° actuator adaptor for panel mounting - spring return



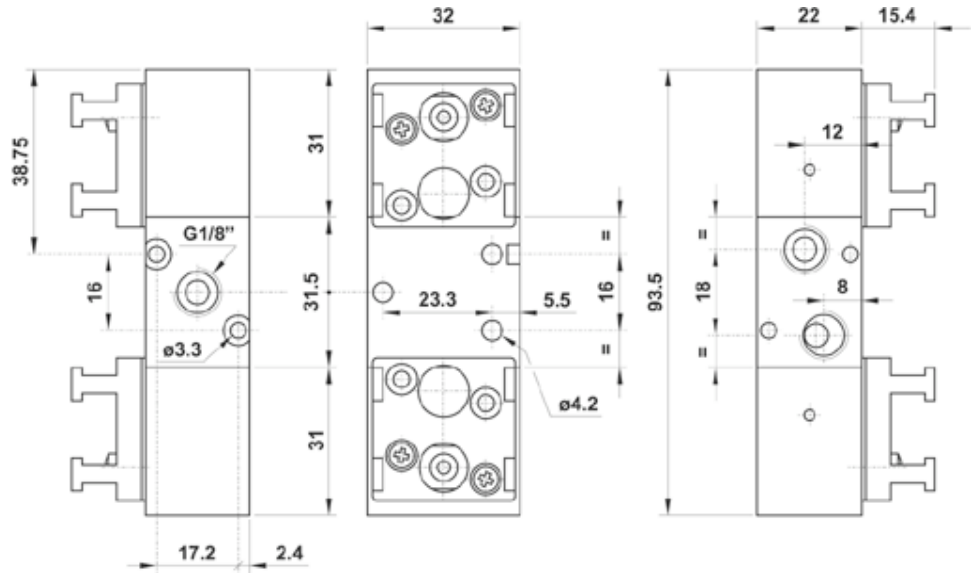
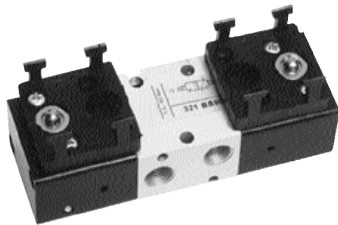
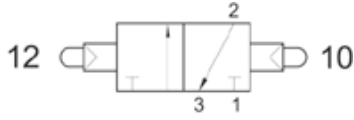
Vannes à à poussoir G1/8"

manually actuated valves

321 BB90

Vanne 3/2 à 2 poussoirs servopilotés (à 90°) pour boutons de commande en montage panneau, raccordement G1/8"

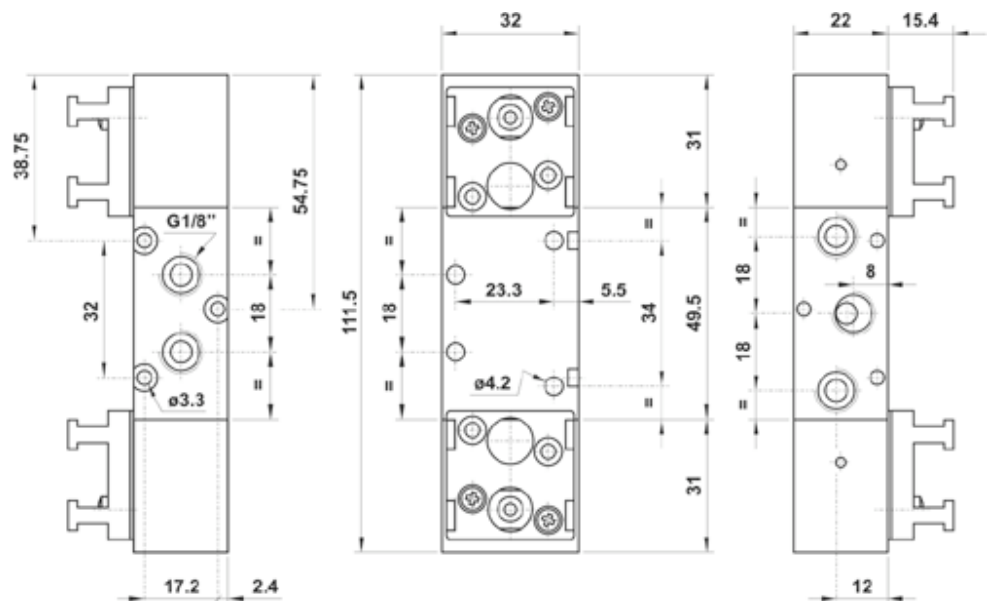
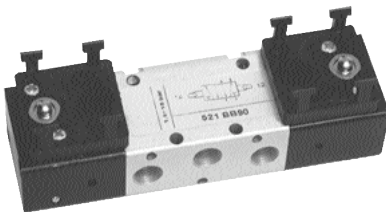
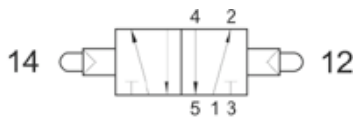
3/2 1/8" double servo-piloted tappet with 90° actuator adaptor for panel mounting



521 BB90

Vanne 5/2 à 2 poussoirs servopilotés (à 90°) pour boutons de commande en montage panneau, raccordement G1/8"

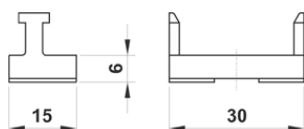
5/2 1/8" double servo-piloted tappet with 90° actuator adaptor for panel mounting



08.017.2

Adatateur simple pour actionneur montage en panneau, complet avec vis de fixation.

single adaptor for panel mounting actuator, complete with fixing screws



08.015.2

Adaptateur double pour actionneur montage en panneau, complet avec vis de fixation.

double adaptor for panel mounting actuator, complete with fixing screws

