



# MAGNABOSCO

GREEN LINE

**Generatore  
di vapore a pellet  
senza patente**

**pellet steam  
generators**

Da 45 a 800 Kg/h  
From 45 to 800 KGS/h

Da 34 a 600 Kw/h  
From 34 to 600 Kw/h



[www.magnabosco.com](http://www.magnabosco.com)



# MAGNABOSCO

## Generatore di vapore a pellet



### GVR P

Modello / Model GVR P		Gvr P 45	Gvr P 100	Gvr P 120	Gvr P 150	Gvr P 200	Gvr P 400	Gvr P 500	Gvr P 600	Gvr P 800
Prod. Vapore / Steam production	kg/h	45	100	120	150	200	400	500	600	800
Potenza / Power	kW	34	77	92	116	154	309	385	500	600
Boiler Horse Power	BHP	4	8	10	12	16	32	40	51	63
	HP	46	103	123	154	207	414	516	671	826
Pressione / Pressure	kcal/h	29.900	60.000	72.000	90.000	132.700	265.500	331.000	400.000	500.000
	1000 BTU/h	116	238	286	357	523	1054	1314	1705	2102
	bar	5/40*	5/40*	5/40*	7/9,8/40*	7/9,8/40*	8/9,8/40*	8/12/40*	8/12/40*	8/12/40*
	MPa	0,5 - 4	0,5 - 4	0,5 - 4	0,7/0,98 - 4	0,7/0,98 - 4	0,8/0,98 - 4	0,8/1,2 - 4	0,8/1,2 - 4	0,8/1,2 - 4
	PSI	72,5 - 580	72,5 - 580	72,5 - 580	101/142 - 580	101/142 - 580	116/142 - 580	116/174 - 580	116/174 - 580	116/174 - 580
			580	580	580	580	580	580	580	580
<b>Consumo pellet / Pellet consumption</b>										
Pellet	kg/h ca	8	11	22	28	36	72	90	110	150
<b>Dimensioni / Dimension (mm)</b>										
A	mm	1600	1800	1800	2000	2000	2650	2650	2850	3000
B	mm	900	900	1000	1000	1000	1150	1450	1700	1800
H	mm	2000	2000	2200	2300	2400	2600	2600	2700	2900
Peso / Weight	kg	850	850	1050	1100	1400	1950	2000	2200	2400
Consumo / Consumption	kWh	0,75	0,75	0,75	0,75	0,75	2,3	2,3	2,3	2,3
Preso vapore / Steam outlet	DN	15	15	15	15	25	32	32	32	40
Diametro Max. Camino / Chimney diam.	mm	130	130	130	130	140	200	200	200	200
H2O Consigliata / Suggested water value: Durezza °F 0,5 Alcalinità 1200 P.P.M. CaCO <sub>3</sub> / Hardness °F 0,5 Alcalinity 1200 P.P.M CaCO <sub>3</sub>										

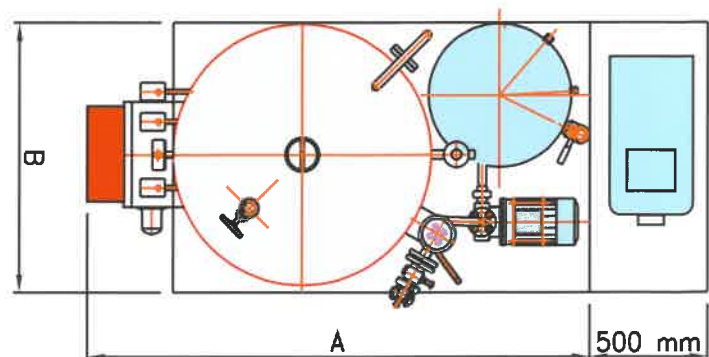
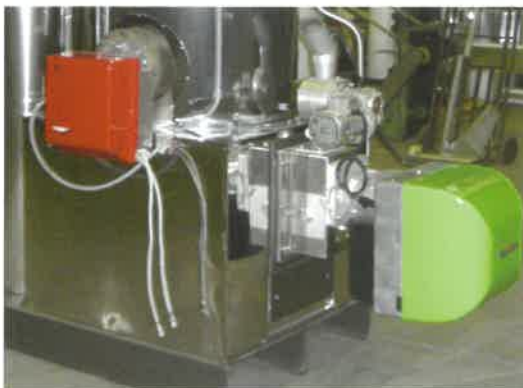
**\* 40 bar per utilizzi speciali quali turbine a vapore o motori / \* 40 bar for special requirements like steam engines or steam turbines**

**Optional: Coda estrazione ceneri - Ash screw feeder**

**A richiesta modelli superiori, dimensioni e dati tecnici / For bigger size boiler details on request**

**A richiesta anche versioni BIFUEL non contemporanei, pellet/gasolio o pellet/gas**

**On request, BIFUEL type boiler (not at the same time) pellet/gasoil or pellet/gas**



**MAGNABOSCO** s.r.l.

Via Roma 19 - 36030 Zugliano (VI) - Tel. 0445.330111 - Fax 0445.330222

e-mail: [magnabosco@magnabosco.com](mailto:magnabosco@magnabosco.com) - [www.magnabosco.com](http://www.magnabosco.com)

Pec: [magnabosco@legalmail.it](mailto:magnabosco@legalmail.it)



For U.S. and Canada:

**BOSCO Trade INT. L Corp.**

1120 1/2 N. Collier Blvd - Marco Is. 34145 - FL -

e-mail: [boscoboilers@yahoo.com](mailto:boscoboilers@yahoo.com)