

**HOT DIP
GALVANIZED
RIGID ROBUST
CHASSIS**

**MEKA
NO.1**



MEKA

100/200 m³/h
130/260 yd³/h

**DRY
BATCH
CONCRETE
PLANTS**

MEKA

100/200 m³/h - 130/260 yd³/h
DRY BATCH CONCRETE PLANTS

MEKA CRUSHING SCREENING AND CONCRETE BATCHING TECHNOLOGIES
www.mekaconcreteplants.com



MEKA DRY BATCH CONCRETE PLANTS

Dry batch concrete plants are different from wet mix production. Also called truck mixed or dry-batched concrete manufacturing requires all of the raw ingredients to be charged directly into the truck mixer without mixing by the plant.

Dry batch concrete plants are typically simpler and more cost effective according to the wet mix types. They offer both fast installation and dismantling along with high production capacity.



GENERAL SPECIFICATIONS OF THE MEKA DRY BATCH CONCRETE PLANTS

MB-100D

- Aggregate storage capacity : 100 m³/130yd³,
- Cement capacity —2 x 100 tons cement silos (optional),
- Batching system is capable of weighing 9 m³ / 12yd³ of aggregate, cement, and water.

MB-200D

- Aggregate storage capacity : 100 m³/130 yd³
- Cement capacity —3 x 100 tons cement silos (optional),
- Batching system is capable of weighing 9 m³ / 12yd³ of aggregate, cement, and water.



100/200 m³/h - 130/260 yd³/h
DRY BATCH CONCRETE PLANTS

GENERAL SPECIFICATIONS OF THE MEKA DRY BATCH CONCRETE PLANTS

	MEKA MB-100D	MEKA MB-200D
Plant Concrete Output (m ³ /h-yd ³ /h)	100-130	200-260
Number of Aggregate Bins (n)	4	4
Batching for Truckmixer (m ³ -yd ³)	9-12	9-12
Number of Cement Silos (100 tons)	2	3
Aggregate storage capacity (m ³ -yd ³)	100-130	100/150- 130/195
Aggregate Loading System	Ramp	Ramp
Transfer belt conveyor width (mm/in.)	1000 / 40"	1200 / 48"
Aggregate discharge	In-line	In-line

OUTSTANDING FEATURES

- Suitable for oversea transportation by 40' O/T containers
- Fully hot dip galvanized durable and long-lasting steel structure
- Flexible design



100/200 m³/h - 130/260 yd³/h
DRY BATCH CONCRETE PLANTS

TECHNICAL SPECIFICATION OF THE MEKA DRY BATCH CONCRETE PLANTS

MB-100D

AGGREGATE BIN

- Capacity: 100 m³ - 130yd³
- 4 compartments-Dimensions of each compartment at top level with extensions; central compartments 3200x4200mm (10.5'x13.5') outer compartments 2900x4200mm (9.5'x13.5').
- 8 discharge gates controlled with 8 amortized pneumatic cylinders with quick discharge (100mm (4") diameter-stroke 250mm (10")),
- 2+2 Vibrator 200kg (440lb) capacity placed between the discharge gates in correspondence of the first sand compartment.

MB-200D

AGGREGATE BIN

- Capacity: 100/150 m³ - 130/195 yd³
- 4 compartments-Dimensions of each compartment at top level with extensions; central compartments 3200x4200mm (10.5'x13.5') outer compartments 2900x4200mm (9.5'x13.5').
- 8 discharge gates controlled with 8 amortized pneumatic cylinders with quick discharge (100mm (4") diameter-stroke 250mm (10")),
- 2+2 Vibrator 200kg (440lb) capacity placed between the discharge gates in correspondence of the first sand compartment.



MEKA

100/200 m³/h - 130/260 yd³/h
DRY BATCH CONCRETE PLANTS

MEKA CRUSHING SCREENING AND CONCRETE BATCHING TECHNOLOGIES
www.mekaconcreteplants.com



TECHNICAL SPECIFICATION OF THE MEKA DRY BATCH CONCRETE PLANTS

MB-100D

AGGREGATE BATCHING

- Up to 9 m³ (12 yd³) batches
- Aggregate weighing hopper thickness 4mm,
- Geometric capacity 14 m³(18yd³)
- 40 Tons (44 short tons) capacity weighing system with 4 homologated load cells,
- 1 ea 200kg (440lb) vibrator bolted on the aggregate weighing hopper in correspondence with sand compartment

CEMENT BATCHING

- 4 m³ (5.2yd³) real geometric bin volume, twin outlet at bottom, 2 screw conveyors with dimension Ø273x4000mm (Ø 10.7"x13') mounted directly at bottom outlets for extracting cement. Weighing systems with 4 homologated load cells, maximum weighing capacity 5 tons(5.5 short tons). On bin 2 ea vibrator, 200kg (440lb) capacity are fixed.

WATER BATCHING

- 2" Pulse counter and electro pneumatic sphere valve.

MB-200D

AGGREGATE BATCHING

- Up to 9 m³ (12 yd³) batches
- Aggregate weighing hopper thickness 4mm,
- Geometric capacity 14 m³(18yd³)
- 40 Tons (44 short tons) capacity weighing system with 4 homologated load cells,
- 1 ea 200kg (440lb) vibrator bolted on the aggregate weighing hopper in correspondence with sand compartment

CEMENT BATCHING

- 4 m³ (5.2yd³) real geometric bin volume, twin outlet at bottom, 2 screw conveyors with dimension Ø323x4000mm (Ø 12.7"x13') mounted directly at bottom outlets for extracting cement. Weighing systems with 4 homologated load cells, maximum weighing capacity 5 tons(5.5 short tons). On bin 2 ea vibrator, 200kg (440lb) capacity are fixed.

WATER BATCHING

- 4" Pulse counter and electro pneumatic sphere valve.

100/200 m³/h - 130/260 yd³/h
DRY BATCH CONCRETE PLANTS

TECHNICAL SPECIFICATION OF THE MEKA DRY BATCH CONCRETE PLANTS

MB-100D

EXTRACTOR BELT CONVEYOR

- 1000 x 9.550mm,(40"x31') Capacity 300 m³/h(390yd³/h)
- Self lubrication rollers arranged in concave form, diameter 89mm (3.5")
- Drive drum diameter 500mm (20") covered with anti-slip rubber,
- 15 kW (20Hp) three phase electric motor belt speed 1.1 m/sec.(3.6' / sec.)

TRANSFER BELT CONVEYOR

- 1000 x 10.000mm(40"x33') capacity 300 m³/h(390yd³/h)
- Belt inclination 28 degrees,
- Self lubrication rollers arranged in concave form, diameter 89mm(3x5")
- Drive drum diameter 500mm(20"), covered with anti-slip rubber,
- 22kW (30Hp) three phase electric motor, belt speed 2,4m / sec.(7.8' / sec),

HOPPER FOR LOADING TRUCK MIXER

- Hopper produced from 5mm thick steel, discharge section covered with anti-wear plates,
- Outlet diameter 500mm(20"),
- Water discharge piping with 2" circular pipe with 16 nozzles 10mm (0.4") diameter,
- Frame in welded / bolted construction,
- Walkways around hopper, handrails and ladder on the frame

MB-200D

EXTRACTOR BELT CONVEYOR

- 1000x 9550mm (40"x31') Capacity 500 m³/h (650yd³/h),
- Self lubrication rollers arranged in concave form, diameter 89mm. (3.5")
- Drive drum diameter 500mm (20") covered with anti-slip rubber,
- 22 kW (30Hp) three phase electric motor belt speed 1.4 m/sec.(4.6' / sec.)

TRANSFER BELT CONVEYOR

- 1200 x 10.000mm(48"x33'), capacity 600 m³/h(780 yd³/h)
- Belt inclination 28 degrees,
- Self lubrication rollers arranged in concave form, diameter 89mm(3x5"),
- Drive drum diameter 500mm (20"), covered with anti-slip rubber,
- 30kW (40Hp) three phase electric motor, belt speed 2,4m / sec.(7.8' / sec.),

HOPPER FOR LOADING TRUCK MIXER

- Hopper produced from 5mm thick steel, discharge section covered with anti-wear plates
- Rubber pipe at outlet,
- Water discharge piping with 4" circular pipe with 20 nozzles 10mm (0.4") diameter,
- Frame in welded / bolted construction,
- Walkways around hopper, handrails and ladder on the frame

MEKA

100/200 m³/h - 130/260 yd³/h
DRY BATCH CONCRETE PLANTS

MEKA CRUSHING SCREENING AND CONCRETE BATCHING TECHNOLOGIES
www.mekaconcreteplants.com

GENERAL SPECIFICATIONS OF THE MEKA DRY BATCH CONCRETE PLANTS



100/200 m³/h - 130/260 yd³/h
DRY BATCH CONCRETE PLANTS

TECHNICAL SPECIFICATION OF THE MEKA DRY BATCH CONCRETE PLANTS

CAPACITY 100/200 m³/h - 130/260 yd³/h

COMPRESSED AIR SYSTEM

- 1 compressor, with 500lt (132 US gal) tank and 7.5Kw (10Hp) electric motor, 1000lt/min(264 US gal) air capacity, 8 bar,
- 8 units 24v 5 way electric valve to set in action 8 pneumatic cylinders (discharge gates)
- 1 unit 24v 5 way electric valve to set in action the pneumatic cylinder (cement weighing hopper)

STEEL BASE FRAME FOR MOBILE PLANT

- Steel base structure for aggregate bin and transfer belt conveyor so that the plant can be placed on compacted and leveled foundation or on concrete floor. Steel base structure is realized in HEA 160 profile.

RUST PREVENTION

- All surfaces are fully hot dip galvanized.

BENEFITS OF HOT DIP GALVANIZING?

LONG-LASTING PROTECTION

**BARRIER
PROTECTION**

**CATHODIC
PROTECTION**



HOT DIP GALVANIZED?

The process of dipping a prepared article into molten zinc, resulting in the production of a hot dip galvanized coating on a steel article.

Galvanised steel has a strong protective coating of zinc that has a metallurgical bond to it. This is what makes galvanising a corrosion protection solution for steel that is intended to have a long service life that is easily inspected and self maintaining.

OPTIONAL EQUIPMENT OF MEKA DRY BATCH CONCRETE PLANTS

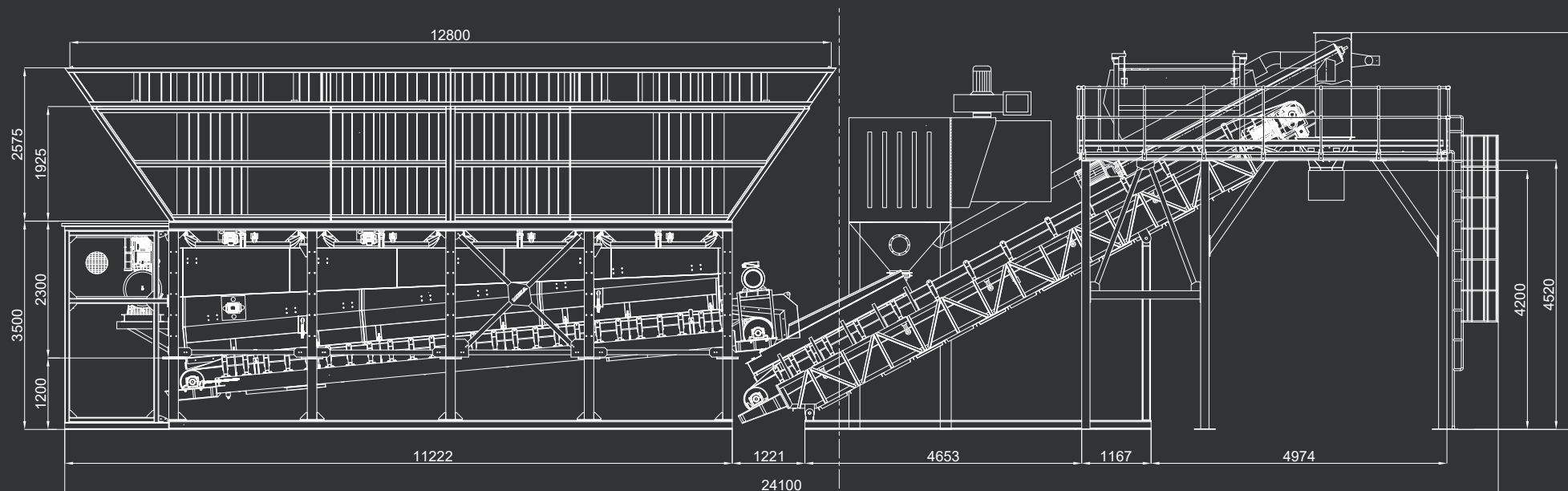
- **Bolted/Weldet cement silo capacity 100-300 tons (110-330 short tons)**
Suitable for container transportation with 1 unit 40' O/T container. Complete with loading pipe, fluidification system, butterfly valve at outlet, safety valve to control the silo pressure, ladder to reach silo roof, handrailing at silo roof.
- **Cement Screw Ø273x7500mm (Ø11"x24.6')**
Capacity 80 t/h (88short ton/h), motor power 7,5 kW (10Hp), complete with knee joint
- **Cement Silo Top Filter**
Jet pulse filter, Filtering surface 24,5
- **Dust Extracting Plant at Charging Point**
Jet pulse filter, Filtering surface 55 m² (592 ft²), Suction fan 6000 m³/h, 11kW (15 Hp), Complete with suction tubes.
- **Admixture Batcher**
40lt (10.5US gal) capacity, Complete set with weighing and pumping system
- **Flowmeter**



100/200 m³/h - 130/260 yd³/h
DRY BATCH CONCRETE PLANTS

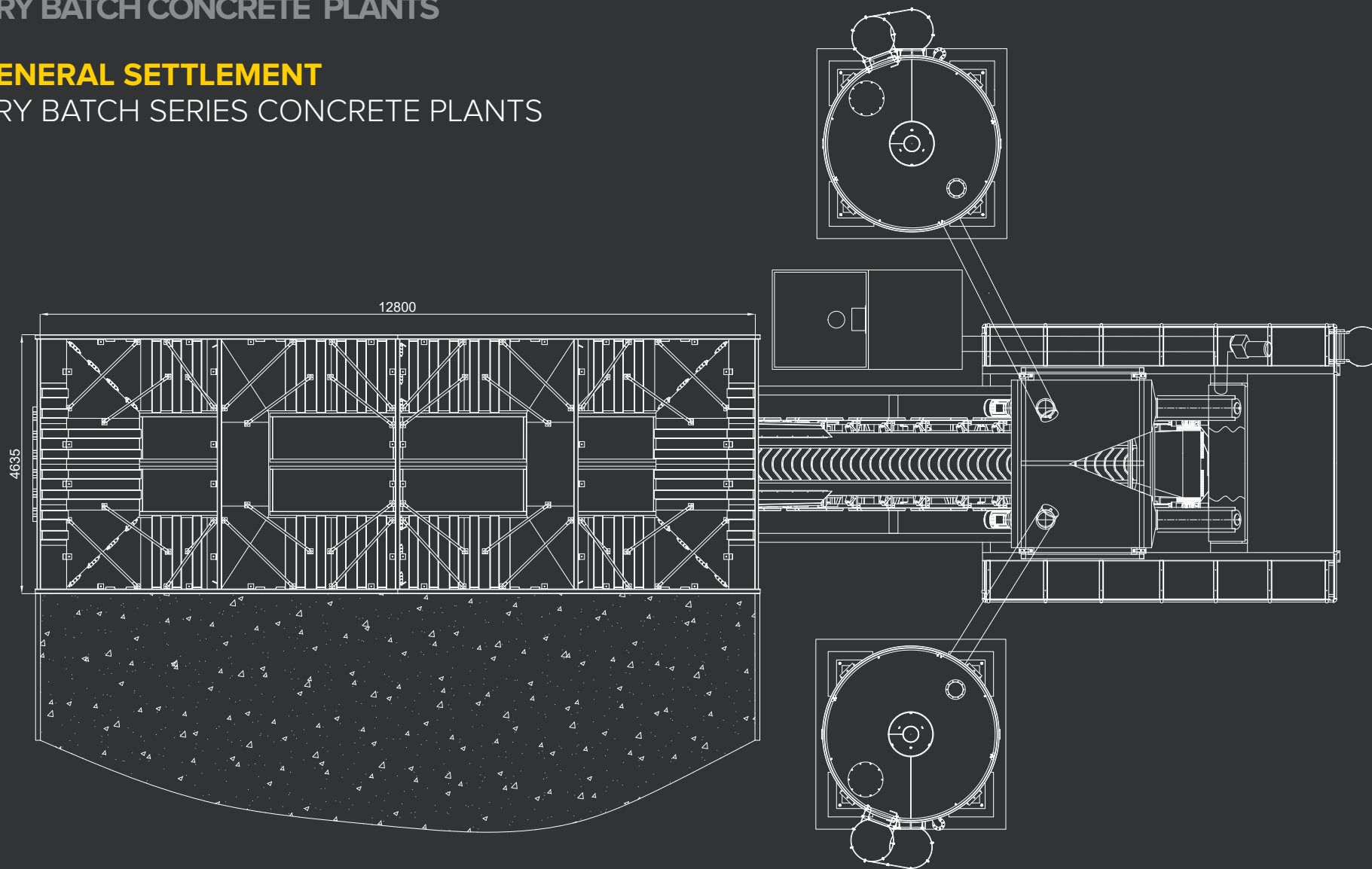
GENERAL SETTLEMENT

DRY BATCH SERIES CONCRETE PLANTS



100/200 m³/h - 130/260 yd³/h
DRY BATCH CONCRETE PLANTS

GENERAL SETTLEMENT DRY BATCH SERIES CONCRETE PLANTS



MEKA

100/200 m³/h - 130/260 yd³/h
DRY BATCH CONCRETE PLANTS

MEKA CRUSHING SCREENING AND CONCRETE BATCHING TECHNOLOGIES
www.mekaconcreteplants.com

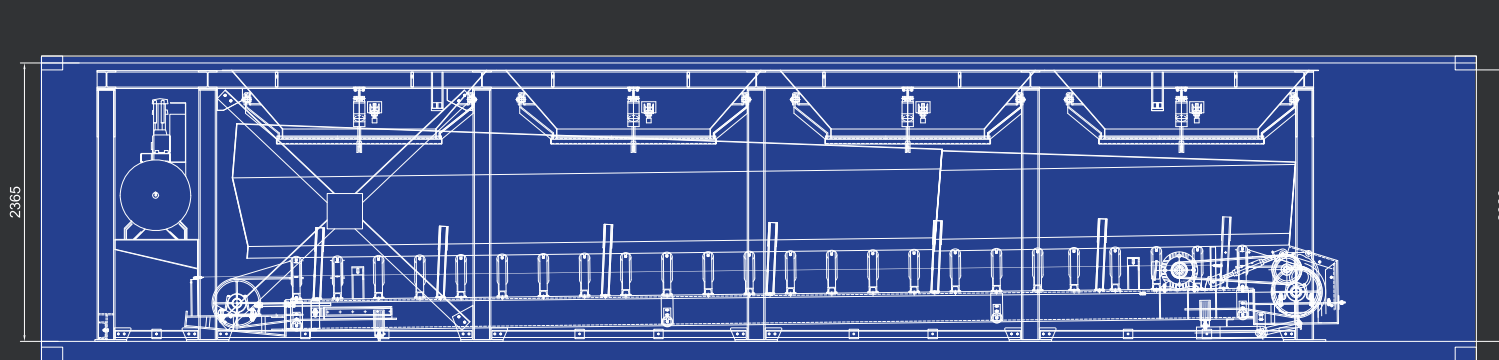


TRANSPORTATION

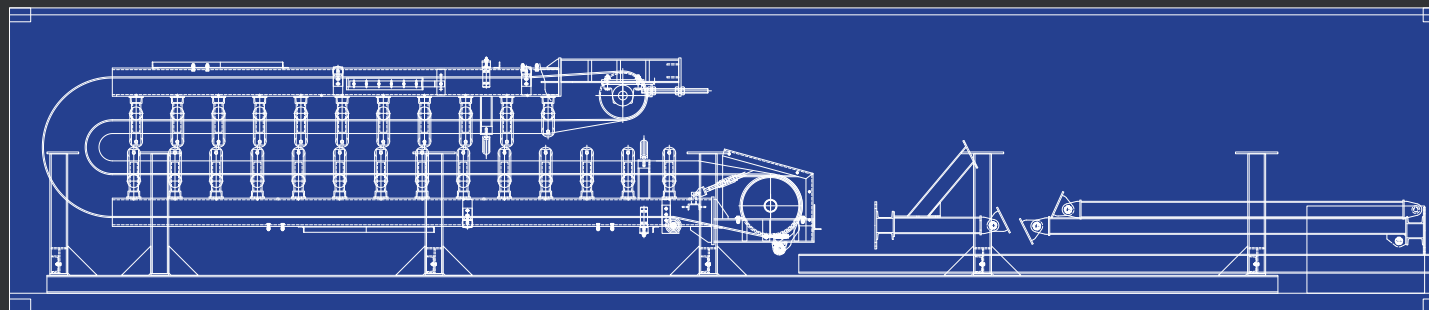
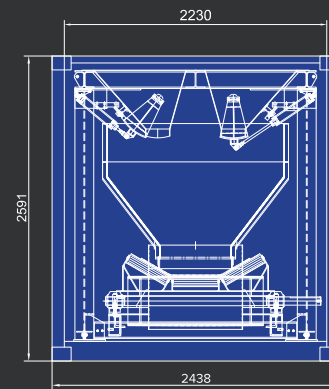
- Basic setup of the plant, excluding the options, can be transported in 4x40' open top containers (no oversize).

100/200 m³/h - 130/260 yd³/h
DRY BATCH CONCRETE PLANTS

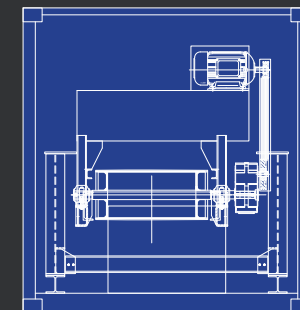
TRANSPORT PLAN
DRY BATCH SERIES CONCRETE PLANTS



1. 40' O/T CONTAINER

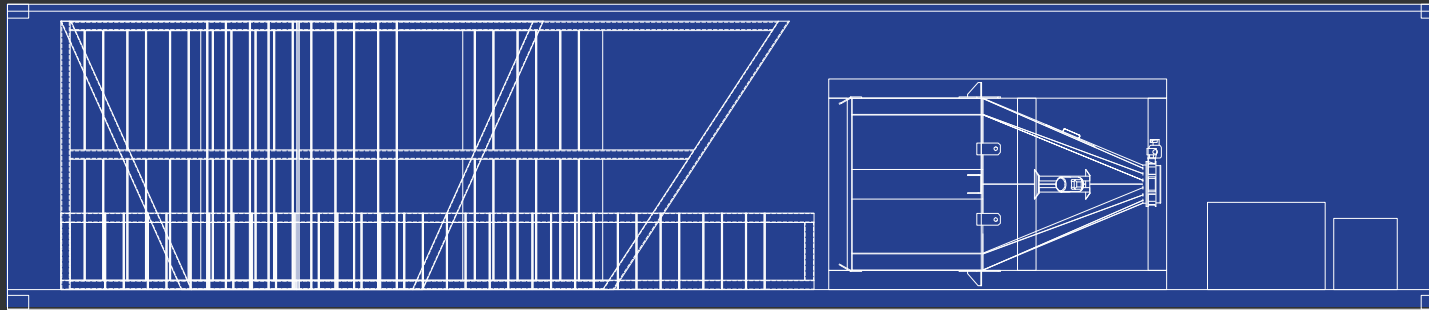


2. 40' O/T CONTAINER

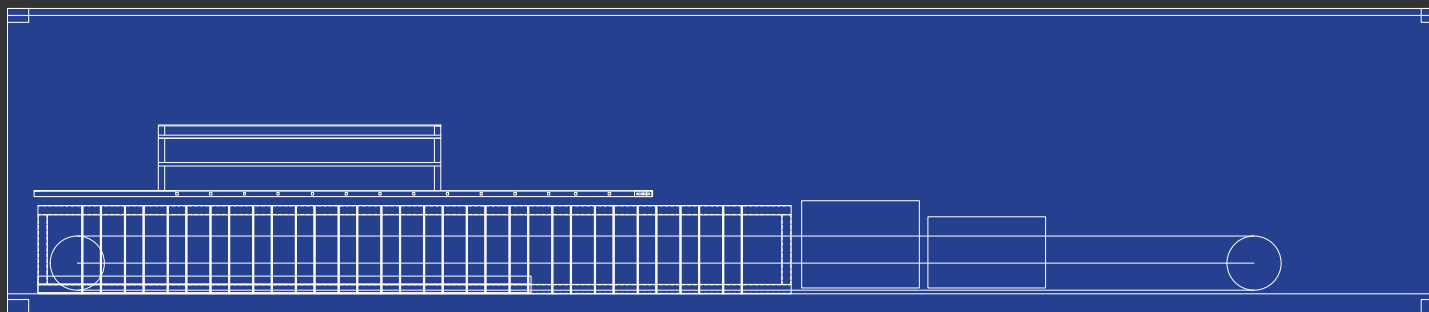
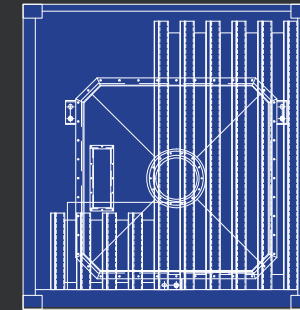


TRANSPORT PLAN

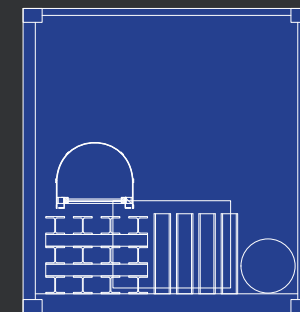
DRY BATCH SERIES CONCRETE PLANTS



3. 40' O/T CONTAINER



4. 40' O/T CONTAINER



MEKA

100/200 m³/h - 130/260 yd³/h
DRY BATCH CONCRETE PLANTS



MEKA IS A PROFESSIONAL SOLUTION

Durability is not just another aspect of MEKA Quality, but a philosophy of manufacturing coming from the very beginning of MEKA. MEKA has proven to be extremely reliable in hard nature conditions, extreme temperatures, long continuous operation, high dynamic stress and heavy loads. Therefore, Meka is one of preferred suppliers for global leaders of construction and cement industry, such as Hochtief, Fluor, Enka, Strabag, LafargeHolcim, Cemex, and Heidelberg Cement, and our brand is known to be “the choice of professionals” worldwide.



MEKA

100/200 m³/h - 130/260 yd³/h
DRY BATCH CONCRETE PLANTS

MEKA CRUSHING SCREENING AND CONCRETE BATCHING TECHNOLOGIES
www.mekaconcreteplants.com



COSTA RICA



UK



FRANCE



AUSTRIA



UK

MEKA

100/200 m³/h - 130/260 yd³/h
DRY BATCH CONCRETE PLANTS

MEKA CRUSHING SCREENING AND CONCRETE BATCHING TECHNOLOGIES
www.mekaconcreteplants.com





MEKA

CRUSHING
SCREENING AND
CONCRETE BATCHING
TECHNOLOGIES

HEAD OFFICE

Çamlıca Mah. Anadolu Bulvarı
147. Sokak Atlas İş Merkezi
No:5/9 Gimat ANKARA - TURKEY
+90 312 397 91 33-34-35
Fax: +90 312 397 10 34
sales@meka.com.tr

www.meka.com.tr

www.mekaconcreteplants.com

www.mekacrushers.com