

Technical specifications are subject to change without prior notice!

[www.unipak-sh.com](http://www.unipak-sh.com)

2016

**UNIPAK**  
*Packing Your Future!*

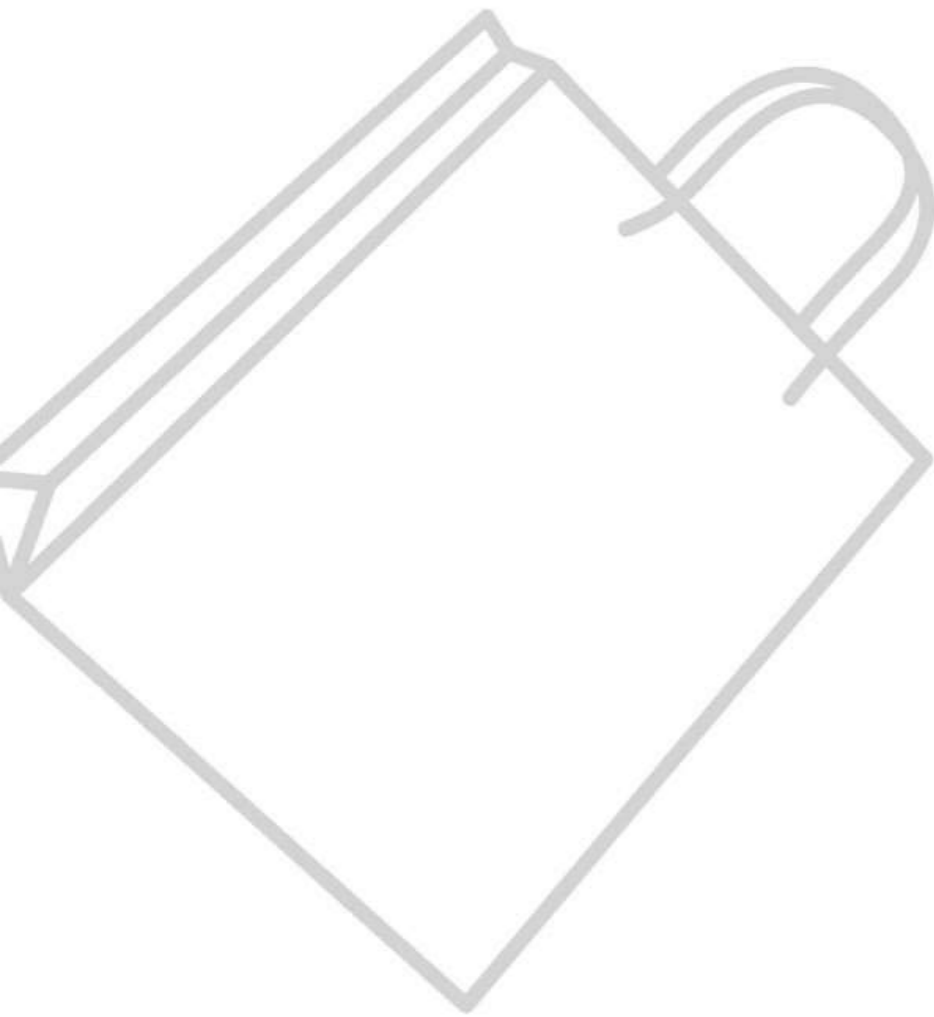
**UNIPAK**

Unipak International Trading (Shanghai) Co.,Ltd.

Add: Room 302 Tower A, Shanghai Greenland Center,  
No. 596 Longhua Rd. (M), Shanghai 200032 China

Tel: +86-21-51135782  
Fax: +86-21-51135781  
E-mail: [unipak@unipak-sh.com](mailto:unipak@unipak-sh.com)

**Paper Bag**  
Making Machine Series



# Packing Your Future!

## Company Introduce

Unipak is a professional solution supplier for paper bag and rigid box making field. We focus on package over 10 years, cooperating with the leading manufacturers of paper bag making machine and rigid box making machine in China. We make perfect solutions available to each of our clients regarding their specific equipments. Choosing Unipak means you have chosen not only suitable solution and high quality machine, but also excellent service and high cost performance.

You can also visit [www.unipak-sh.com](http://www.unipak-sh.com), which is totally dedicated to paper bag and rigid box making. The site is designed so as to guide you towards an existing solution if there is one, or towards more tailored alternatives. Paper Bag Solutions, Box Solutions and Relative Equipments can all lead to concrete proposals that further your development... including something very unique!



**Global Brand Service Model**  
All rights reserved by Unipak

## Contents

### Sheet-feeding Paper Bag Making Machine

ZB1260S-450/ZB1080S-380	04-07
ZB1250S-450	08-09
ZB1200CS-430	10-11
ZB1200C-430	12-13
ZB700C-240	14-15
ZB1200B	16-17
ZB60B	18
ZB50B-2	19

### Roll-feeding Paper Bag Making Machine

SBH150	20-21
SBH290	22-23
SBH450	24-25
SBH290W+PAV02	26-27
SBH450HD	28-29
SBH450-518TH	30-31
FSB1600	32-33
FSB650	34-35



Top folding joint type:  
Directly pasting

## ZB 1260S-450

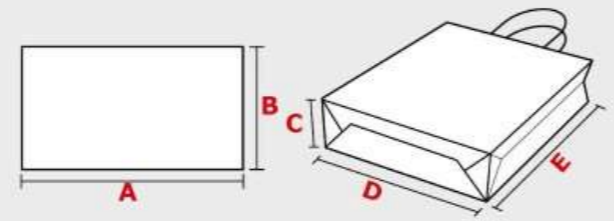
Fully Automatic Sheet-feeding  
Paper Bag Making Machine

### Introduce

Brand new ZB1260S-450 fully automatic sheet-feeding paper bag making machine is suitable for mass bags produce. Adopts Italian technology and using sheet paper, paper patch roll and twist paper rope to produce paper bag with in-line handle making. The machine can make 3 different handle types, it can fulfill automatic non-stop sheets feeding, register, creasing, in-line handle making and pasting/reinforce paper pasting, top fold/without top folding, side gluing, gusset forming, bottom folding, bottom pasting and compaction out by one time. Innovative bottom closing system makes the bag body traceless. Thanks for the creative servo system for reinforce paper cut off, so that you can change the length of reinforce paper for different bag size, especially for some large bags. The bag can keep the nice appearance when have heavy loadings. Standard with hot melt glue system and water soluble cold glue, this machine is good for making gift and shopping bags for shoes, clothing and sports brands.

### Applicable Paper

1260S-450	A	B	C	D	E
Max.Size	1200	620	170	450	490
Min.Size	600	350	80	220	250



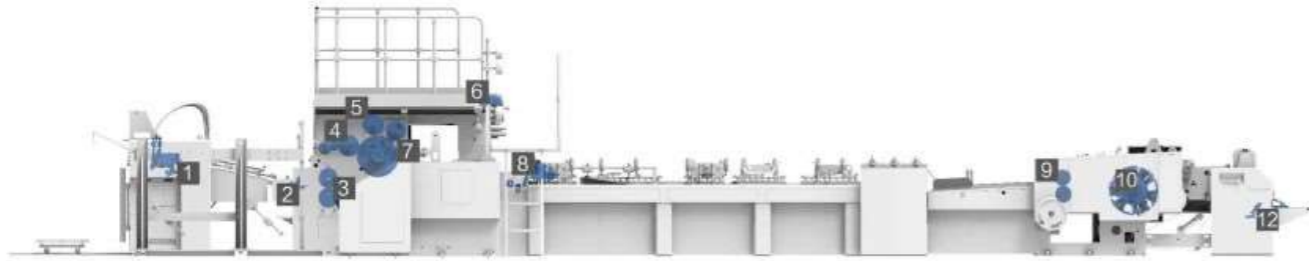
Suitable Paper: Kraft paper, art paper (including film laminated paper)

This machine can produce 3 kinds of different paper bags

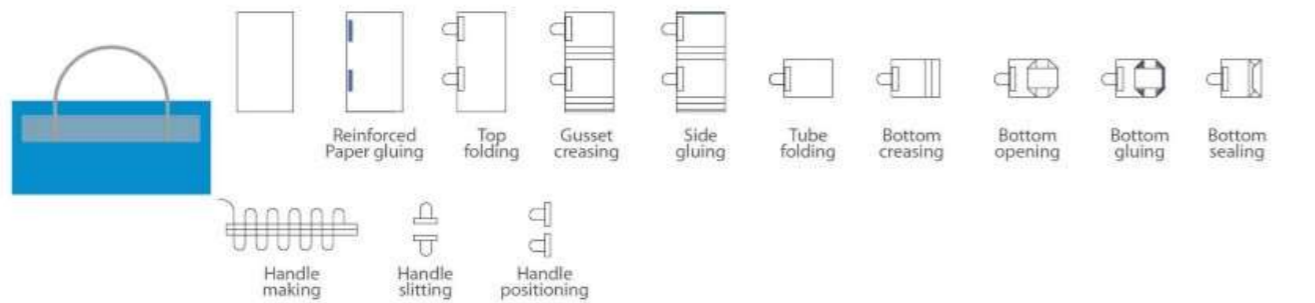
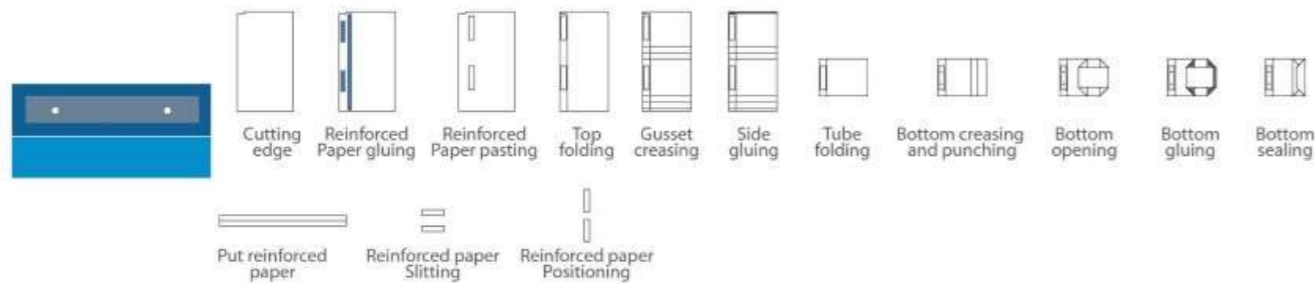
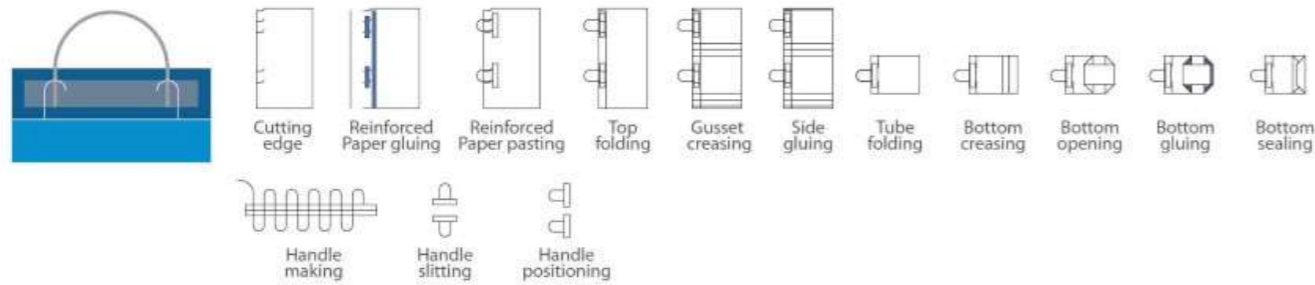
### Main Technical Parameters

Model	1260S-450		
Max.sheet(LXW)	1200X600	1200X600	1200X600
Min.sheet(LXW)	620X350	620X350	620X350
Sheet Weight	100g-190g	100g-190g	100g-230g
Bag Width	220-450mm	200-450mm	220-450mm
Bottom Width	80-170mm	80-170mm	80-170mm
Bag length	250-490mm	250-490mm	260-540mm
Top turn in width	40-60mm	40-60mm	----
Handle patch length	188.5mm	150-400mm	188.5mm
Handle patch width	35-55mm	35-55mm	35-55mm
Handle patch weight	100g-300g	100g-300g	100g-300g
Handle patch roll diameter	φ 1000mm	φ 1000mm	φ 1000mm
Handle patch roll width	70-110mm	70-110mm	70-110mm
Paper rope diameter	4-6mm	----	4-6mm
Handle rope height	170-195mm	----	170-195mm
Speed	40-70bags/min	40-70bags/min	40-70bags/min
Total Power	25kw	25kw	25kw
Total Weight	22T	22T	22T
Machine Size	16.1x5.3x3.1m	16.1x5.3x3.1m	16.1x5.3x3.1m
Glue Type		Water soluble cold glue(hot-melt glue)	

**ZB 1260S-450** Fully Automatic Sheet-feeding Paper Bag Making Machine  
**ZB 1080S-380**



- 1 Feeder: equipped with pre-load device, non-stop feeding which can improve the production capacity
- 2 Side and front layer position system
- 3 Edge Cutting System
- 4 Reinforced paper gluing system
- 5 Handle pasting system
- 6 Servo reinforce paper cut off system (ZB1260S-450)  
Mechanical handle cut off system (ZB1080S-380)
- 7 Top folding system: controlled by mechanical multi-cam to realize automatic top folding, greatly improve production efficiency
- 8 Automatic edge gluing system
- 9 Automatic creasing and Punching system
- 10 Thread rod to adjust bottom Clip system
- 11 Paper bag fall down caution system
- 12 Automatic collection system: Automatic counting, convenient to collect bags



Top folding joint type: Directly pasting



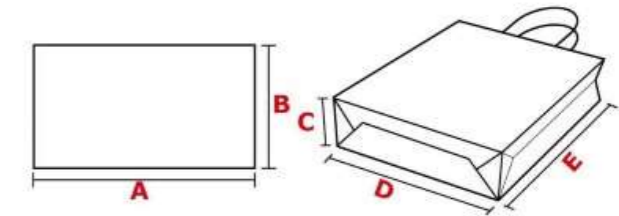
**ZB 1080S-380**  
Fully Automatic Sheet-feeding Paper Bag Making Machine

**Introduce**

ZB1080S-380 fully automatic sheet-feeding paper bag making machine is suitable for mass bags produce. Adopts Italian technology and using sheet paper, paper patch roll and twist paper rope to produce paper bag with in-line handle making. The machine can make 3 different handle types, it can fulfill automatic non-stop sheets feeding, register, creasing, in-line handle making and pasting/reinforce paper pasting, top fold/without top folding, side gluing, gusset forming, bottom folding, bottom pasting and compaction out by one time. Innovative bottom closing system makes the bag body traceless. Standard with hot melt glue system and water soluble cold glue, this machine is good for making gift and shopping bags for shoes, clothing and sports brands.

**Applicable Paper**

1080S-380	A	B	C	D	E
Max.Size	1080	600	170	380	490
Min.Size	600	350	80	220	250



Suitable Paper: Kraft paper, art paper (including film laminated paper)

**This machine can produce 3 kinds of different paper bags**

**Main Technical Parameters**

Model	1080S-380		
Max.sheet(LXW)	1080X600	1080X600	1080X600
Min.sheet(LXW)	600X350	600X350	600X350
Sheet Weight	100g-190g	100g-190g	100g-230g
Bag Width	220-380mm	220-380mm	220-380mm
Bottom Width	80-170mm	80-170mm	80-170mm
Bag length	250-490mm	250-490mm	260-540mm
Top turn in width	40-60mm	40-60mm	---
Handle patch length	188.5mm	188.5mm	188.5mm
Handle patch width	35-55mm	35-55mm	35-55mm
Handle patch weight	100g-300g	100g-300g	100g-300g
Handle patch roll diameter	φ 1000mm	φ 1000mm	φ 1000mm
Handle patch roll width	70-110mm	70-110mm	70-110mm
Paper rope diameter	4-6mm	---	4-6mm
Handle rope height	170-195mm	---	170-195mm
Speed	40-70bags/min	40-70bags/min	40-70bags/min
Total Power	25kw	25kw	25kw
Total Weight	20T	20T	20T
Machine Size	16.1x5.1x3.1m	16.1x5.1x3.1m	16.1x5.1x3.1m
Glue Type		Water soluble cold glue(hot-melt glue)	



**Automatic top folding,  
Insert bottom card (Split bottom)**

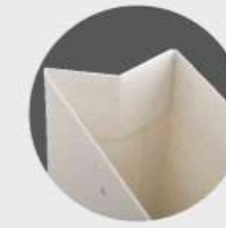
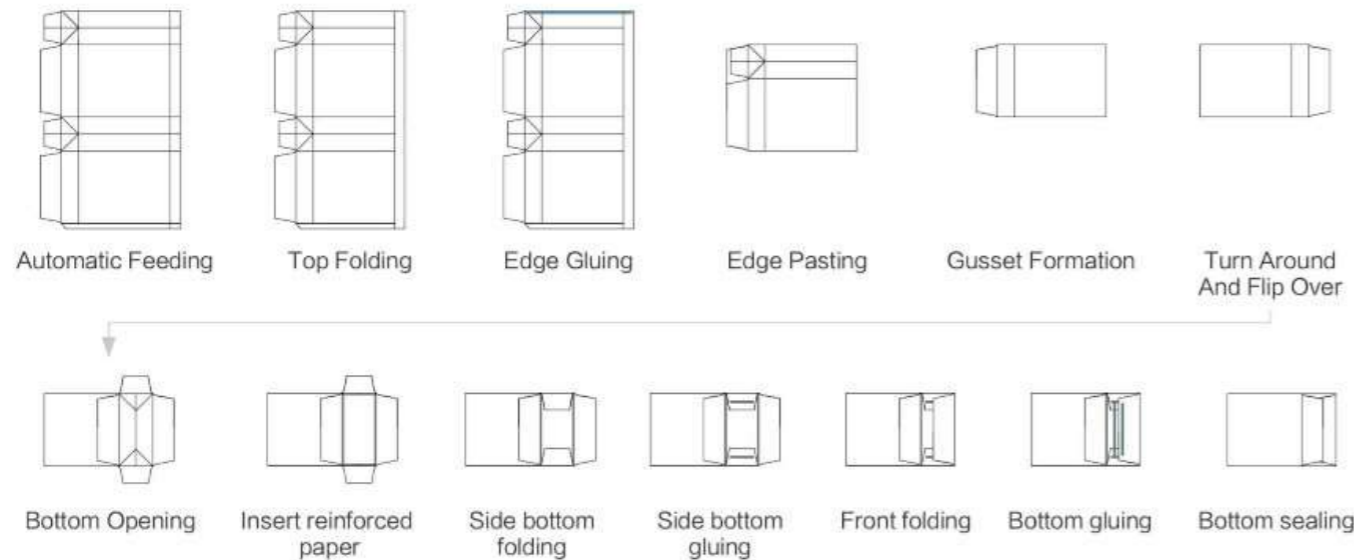
Invention patent No.  
ZL 2011 1 0270129.0

**ZB 1250S-450**

Fully Automatic Sheet-feeding  
Paper Bag Making Machine

Brand new ZB1250S-450 fully automatic sheet-feeding paper bag making machine is suitable for mass paper bags produce by creased sheet paper. With Italian technology, PLC control, frequency speed adjust and remote control, the machine can fulfill automatic non-stop feeding, register, top folding(s), side gluing, gusset forming, split bottom for bottom card inserting and gluing, bottom pasting and compaction out by one time. Innovative bottom closing system makes the bag body and bottom entirely traceless. Automatic top folding (two times top folding) by insert

pasting joint type, split bottom for bottom card inserting and bottom folding to edge pasting reverse side are our invention patents, which make the bags more stronger, safe and beautiful. Save your labor and time to insert and glue the bottom cards. Two times top folding is an option which can replace the handle reinforce paper. Standard with Nordson hot melt glue system and water soluble cold glue, this machine is good for making gift and shopping bags for wine, drinks, dairy products etc, especially for luxury goods bags.



**Top folding joint type:  
Insert pasting**

**Standard configuration bag  
compaction table**

layers compaction bag device, fast adhesion, compaction, overlapping output, convenient collection, improve work efficiency



**Feeder**  
enhanced prestack paper feeder to realize non stop paper feeding, greatly save the time to load and adjust raw paper.



**Standard configuration Nordson  
hot melt adhesive system**

fast adhesion product, quickly enter the next process



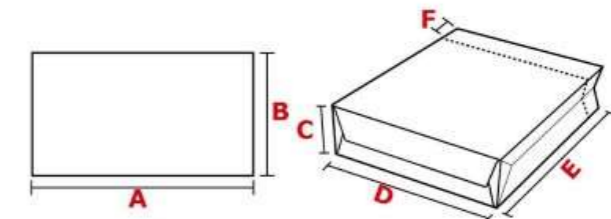
- 1 Feeder: enhanced prestack paper feeder to realize non stop paper feeding, greatly save the time to load and adjust raw paper.
- 2 Front and side guides positioning system
- 3 Top folding system
- 4 Both water soluble cold glue and hot melt glue
- 5 formation version making gusset system
- 6 insert reinforced paper system
- 7 bottom spray gluing system
- 8 Automatic bottom sealing system
- 9 configuration bags compaction table

**Main Technical Parameters**

Max.sheet (LX W)	1200x600mm
Min.sheet (LX W)	560x350mm
Sheet Weight	200g-350g/m <sup>2</sup>
Bottom Width	90-170mm
Bag Width	180-430mm
Top Folding Depth	30-70mm
Total Power	20kw
Machine Size	18200x2400x1800mm
Speed	50-70bags/min
Total Weight	8T
Glue Type	Water soluble cold glue (hot-melt glue)

**Applicable Paper**

	A	B	C	D	E	F
Max.Size	1200	600	170	430	500	70
Min.Size	560	350	90	180	250	30



Suitable Paper: Kraft paper, White cardboard paper (including film laminated paper)  
80mm bag bottom width is customizable

## Automatic top folding(Square bottom)

Invention patent No.  
ZL 2011 1 0274209.3

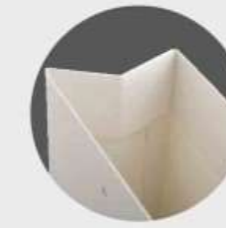
10

UNIPAK



## ZB 1200C S-430

Sheet-feeding Paper Bag Making Machine



Top folding joint type:  
Insert pasting

### Standard configuration bag compaction table

layers compaction bag device,fast adhesion,-  
compaction, overlapping output,convenient  
collection,improve work efficiency



### Feeder

enhanced prestack paper feeder to realize  
non stop paper feeding,greatly save the  
time to load and adjust raw paper.



### Standard configuration Nordson hot melt adhesive system

fast adhesion product ,quickly enter  
the next process



11

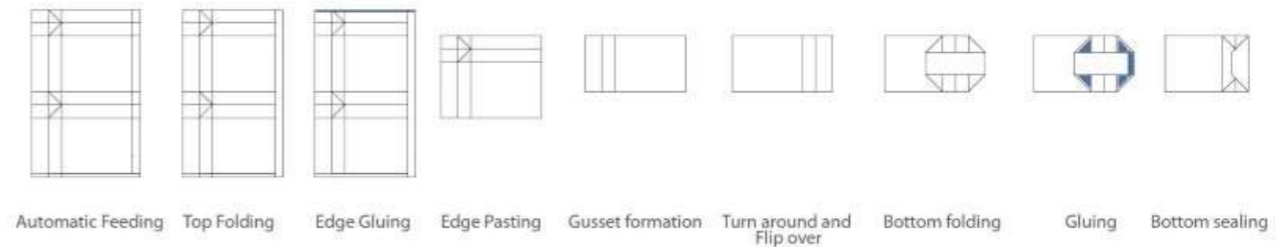
UNIPAK

## Introduce

ZB1200CS-430 sheet-feeding paper bag making machine is suitable for mass bags produce by creased sheet paper. With Italian technology, PLC control, frequency speed adjust and remote control, the machine can fulfill automatic non-stop feeding, register, top folding (190-300gsm paper), side gluing, gusset forming, bottom folding, bottom pasting and compaction out by one time. Innovative bottom closing system makes the paper bag body traceless.

Automatic top folding by insert pasting joint type and bottom folding to edge pasting reverse side are our invention patents, which make the paper bags more stronger, safe and beautiful.

Standard with Nordson hot melt glue system and water soluble cold glue, this machine is good for making gift and shopping bags for wine, drinks, dairy products etc.



1 Feeder: enhanced prestack paper feeder to realize non stop paper feeding,greatly save the time to load and adjust raw paper.

2 Front and side guides positioning system

3 Top folding system

4 Both water soluble cold glue and hot melt glue

5 Formation version making gusset system

6 Screw rod to adjust bottom clip system

7 Bottom catch bag roller paper bag fall down alert system

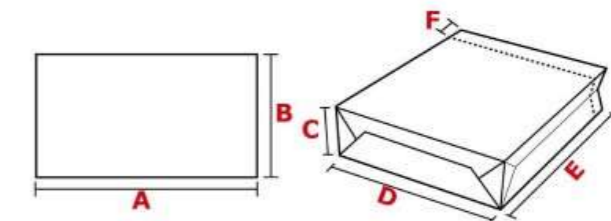
8 Automatic collection system:  
Automatic counting,convenient to collect bags.

## Main Technical Parameters

Max.sheet (LX W)	1200x600mm
Min.sheet (LX W)	560x300mm
Top folding sheet weight	190g-300g/m <sup>2</sup>
Traditional sheet weight	120g-300g/m <sup>2</sup>
Bottom Width	90-180mm
Bag Width	180-430mm
Top Folding Depth	30-70mm
Total Power	20kw
Machine Size	14800x2400x1800mm
Speed	50-80bags/min
Total Weight	12T
Glue Type	Water soluble cold glue (hot-melt glue)

## Applicable Paper

	A	B	C	D	E	F
Max.Size	1200	600	180	430	500	70
Min.Size	560	300	90	180	250	30



Suitable Paper: Kraft paper, art paper  
(including film laminated paper) paper need pre-creasing  
80mm bag bottom width is customizable



## ZB 1200C-430

Sheet-feeding Paper Bag Making Machine

### optional configuration bag compaction table

layers compaction bag device,fast adhesion,- compaction, overlapping output,convenient collection,improve work efficiency



### Feeder

enhanced prestack paper feeder to realize non stop paper feeding,greatly save the time to load and adjust raw paper.



### Optional configuration Nordson hot melt adhesive system:

fast adhesion product ,quickly enter the next process



### Introduce

ZB1200C-430 sheet-feeding paper bag making machine is suitable for mass paper bags produce. With Italian technology, PLC control, frequency speed adjust and remote control, the machine can fulfill automatic non-stop feeding, register, creasing (<190gsm), side gluing, gusset forming, bottom folding, bottom pasting and compaction out by one time. Innovative bottom closing system makes the paper bag bottom traceless.

You can decide where to have the tube edge pasting side, big or small side. So you can make customers different requirements paper bags. Standard with nature-friendly water soluble cold glue this machine is good for gift and shopping bags making. (Hot melt glue system for thick paper is optional)

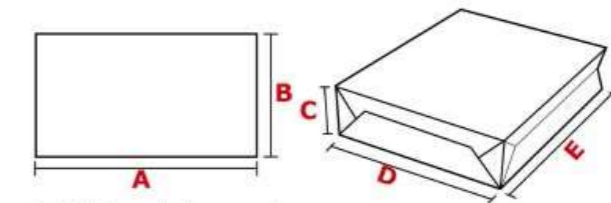


### Main Technical Parameters

Max.sheet (LX W)	1200x600mm
Min.sheet (LX W)	540x300mm
Sheet Weight	110g-300g/m <sup>2</sup>
Bottom Width	80-180mm
Bag Width	180-430mm
Total Power	15kw
Machine Size	14800x2400x1800mm
Speed	50-70bags/min
Total Weight	12T
Glue Type	Water soluble cold glue (hot-melt glue)

### Applicable Paper

	A	B	C	D	E
Max.Size	1200	600	180	430	500
Min.Size	540	300	80	180	250



Suitable Paper: Kraft paper, art paper (including film laminated paper) over 190gsm paper need pre-creasing.



1 Feeder: enhanced prestack paper feeder to realize non stop paper feeding,greatly save the time to load and adjust raw paper.

2 Front and side guides positioning system

3 Hand crank creasing system

4 M side making gusst system

5 Big and small edge glue system: Standard configuration big and small side gluing system,front and back joint edge both able to paroduce

6 Paper blocked checking system

7 Screw rod adjusting bottom clip system:help to shorten the adjusting time and improve the production efficiency in making handbags with different specifications.

8 Bottom catch bag rooler paper bag fall down alert system

9 automatic collection system: Automatic counting, convenient to collect bags.

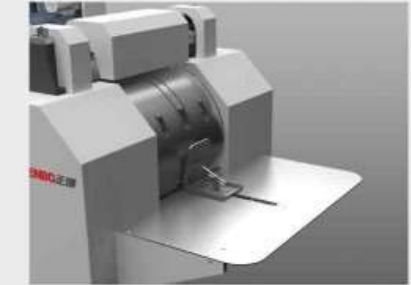


## ZB 700C-240

Sheet-feeding Paper Bag Making Machine

### Automatic collection system

Can realize the automatic counting, convenient products collection



### Optional configuration Nordson hot melt adhesive system:

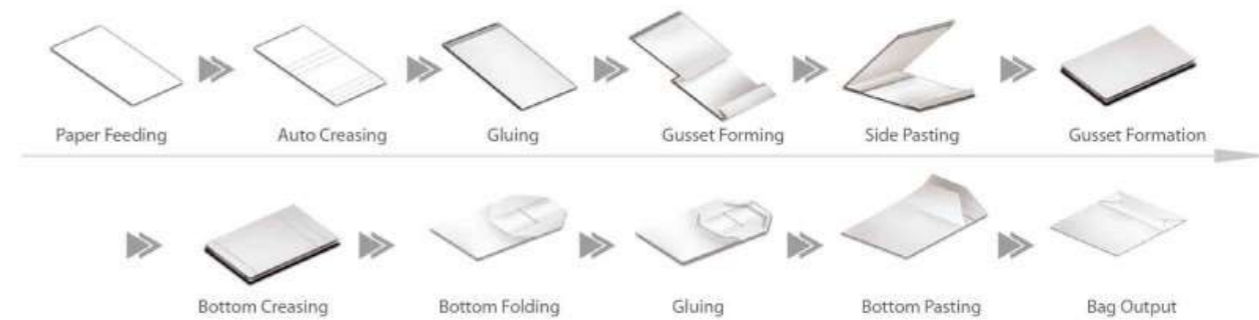
fast adhesion product, quickly enter the next process



### Introduce

ZB700C-240 sheet-feeding paper bag making machine is suitable for mass paper bags produce. With Italian technology, PLC control, frequency speed adjust and remote control, the machine can fulfill automatic non-stop feeding, register, creasing (<190gsm), side gluing, gusset forming, bottom folding, bottom pasting and compaction out by one time. Thanks for the special design of bigger cylinder, the machine's working speed increased 25%! Innovative

bottom closing system makes the paper bag bottom traceless. You can decide where to have the tube edge pasting side, big or small side. So you can make customers different requirements paper bags. Standard with nature-friendly water soluble cold glue and special compact paper bag size, this machine is good for wine bottle loading paper bag making. (Hot melt glue system for thick paper is optional)



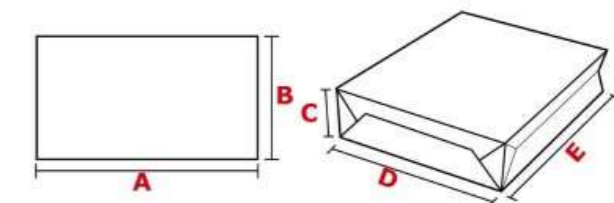
- 1 Feeder: enhanced prestack paper feeder to realize non stop paper feeding, greatly save the time to load and adjust raw paper.
- 2 Front and side guides positioning system
- 3 M side making gusset system
- 4 Big and small edge glue system: Standard configuration big and small side gluing system, front and back joint edge both able to produce.
- 5 Paper blocked checking system
- 6 Planetary gear push align guide system, which can realize non stop machine paper push align guide adjustment
- 7 Folding bottom roller 4 equal parts design, low speed and high efficiency
- 8 Planetary gear adjust paper hit rod system, which can realize non stop machine paper hit rod adjustment
- 9 automatic collection system: Automatic counting, convenient to collect bags.

### Main Technical Parameters

Max.sheet (L x W)	720x460mm
Min.sheet (L x W)	325x220mm
Sheet weight	80g-190g/m <sup>2</sup>
Bag width	100-240mm
Bottom width	50-110mm
Bag length	120-420mm
total power	12kw
Machine size	13800x2200x1800mm
Speed	70-100bags/min
Total weight	9T
Glue Type	Water soluble cold glue (hot-melt glue)

### Applicable Paper

	A	B	C	D	E
Max.Size	720	460	110	240	420
Min.Size	325	220	50	100	120



Suitable Paper: Kraft paper, art paper (including film laminated paper)



Automatic top folding  
(optional configuration),  
Tube forming

## ZB 1200B

Sheet-feeding Bag Tube  
Forming Machine

### Introduce

ZB1200B sheet-feeding paper bag tube forming machine is suitable for various kinds of creased sheet paper including varnished, laminated and other processing technic to make high level and luxury goods paper bags.

Equipped with automatic frequency control feeder, side and front layer system, rolling glue system and automatic gusset forming and compaction out, the machine operation and size change are easily and fast. High speed and stable working ensure the paper bag tubes finished on time with high quality. Together with the optional pressing unit you will get the perfect quality traceless paper bags tube that you can't imagine.

Standard with water soluble cold glue, this is an ideal machine for making paper bag tubes. (Hot melt glue system is optional)

ZB1200B can work along with ZB60B or ZB50B-2 to fulfill the perfect semi-automatic paper bag making solution (top folding, bottom card insert and bottom folding achieved by manual).



### Optional configuration

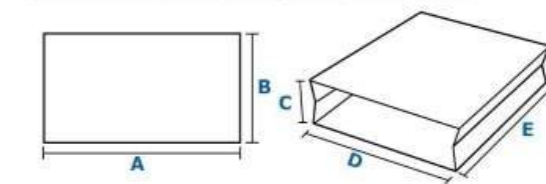
hot melt adhesive system (using spray glue system), which can fast adhesion products, quickly enter to next process.

### Main Technical Parameters

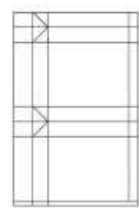
Max.sheet (L x W)	1200x600mm
Min.sheet (L x W)	560x300mm
Sheet weight	100g-350g/m <sup>2</sup>
Bottom Width	90-180mm <sup>2</sup>
Total power	10kw
Machine size	10100x2400x1800mm
Speed	60-80bags/min
Total weight	6T
Glue Type	Water soluble cold glue

### Applicable Paper

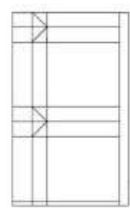
	A	B	C	D	E
Max.Size	1200	600	180	430	600
Min.Size	560	300	90	180	300



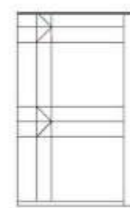
Suitable Paper: Kraft paper, art paper  
(including film laminated paper)  
80mm bag bottom width is customizable



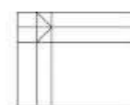
Automatic Feeding



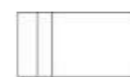
Top Folding  
(unavailable for machine  
without this function)



Edge Gluing



Edge Pasting



Gusset formation



## ZB 60B

### Paper Bag Bottom Gluing Machine

#### Introduce

ZB60B paper bag bottom gluing machine adopts water soluble cold glue to pasting folded paper bag bottom which is the last step of paper bag making. Together with the pressing unit you will get the perfect quality traceless paper bags that you can't imagine.

Automatic bottom vacuum feeder realize non-stop feeding. Gluing position and thickness controlled by frequency motor so all the bags are uniformly. Therefore, the machine operation and size change are easily and fast. High speed

and stable working ensure the bags finished on time with high quality.

With nature-friendly water soluble cold glue, this is an ideal machine for making high quality luxury goods paper bag by big or small orders.

ZB60B can work along with ZB1200B to fulfill the perfect semi-automatic paper bag making solution (top folding, bottom card insert and bottom folding achieved by manual).



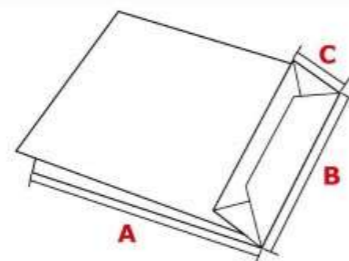
#### Main Technical Parameters

Bottom width	60-180mm
Total power	3kw
Machine size	8140x1600x1380mm
Speed	50-90 bags/min
Total weight	2T
Glue Type	Water soluble cold glue

#### Applicable Paper

Suitable Paper: Kraft paper, art paper(including film laminated paper)

	A	B	C
Max.Size	600	450	180
Min.Size	200	200	60



## ZB 50B-2

### Paper Bag Bottom Gluing Machine

#### Introduce

ZB50B-2 paper bag bottom gluing machine is our upgraded model which adopts hot melt glue system (4 spray nozzles). Signaled by sensor system, each spray nozzle can adjust the gluing length and thickness independently or work synchronously. Together with the optional pressing unit you will get the perfect quality traceless paper bags that you can't imagine.

Automatic bottom vacuum servo feeder realize non-stop feeding. The machine operation and size change are easily

and fast. High speed and stable working ensure the bags finished on time with high quality.

With hot melt glue system, this is an ideal machine for making high quality luxury goods paper bag and heavy load paper bag by big or small orders.

ZB50B-2 can work along with ZB1200B to fulfill the perfect semi-automatic paper bag making solution (top folding, bottom card insert and bottom folding achieved by manual).



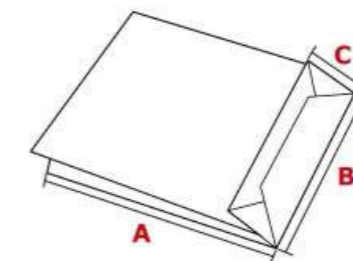
#### Main Technical Parameters

Bottom width	60-180mm
Total power	6kw
Machine size	5500x1500x1600mm
50B Speed	70bags/min
50B-2 Speed	70-100 bags/min
Total weight	1.8T
Glue Type	Hot-melt glue

#### Applicable Paper

Suitable Paper: Kraft paper, art paper (including film laminated paper)

	A	B	C
Max.Size	600	450	180
Min.Size	200	200	60





## SBH 150

Adjustable Roll To Square Bottom Paper Bag Making Machine



### Introduce

SBH series SOS bag making machine is designed to manufacture square bottom paper bags from paper roll in blank or printed. Side gluing, tube forming, cutting, bottom creasing, bottom gluing, bottom forming and final product out feed can be completed within one time by this machine. Especially fit for the production of 38gsm-50gsm paper bag. It is ideal equipment for making paper bag foodstuff bag, shopping bag and so

on. The machine uses German machinery manufacturing technology and ideas, by the high-speed movement of the central control system (CPU) control, touch screen display, servo motor control system bag length and can produce various specifications of the paper bags. SBH150 Basic possibility to add servo patch unit or servo open-window unit to produce transparent window or hand paper bag, thus providing clients with more value.

1. Equipped with Japan Mitsubishi servo system and SICK photocell for correction, tracking the printed material accurately. minimize the adjustment and preset time.

2. Equipped with Mitsubishi electric control system. Mitsubishi motion controller (CPU), through the integration of optical fiber to realize high speed and high precision, motion control, production flow test. The touch screen display, the operation function is clear and has good human-machine interface.

3. Equipped with American FIFE automatic WEB guiding system, can make you reduce the waste and improve efficiency.

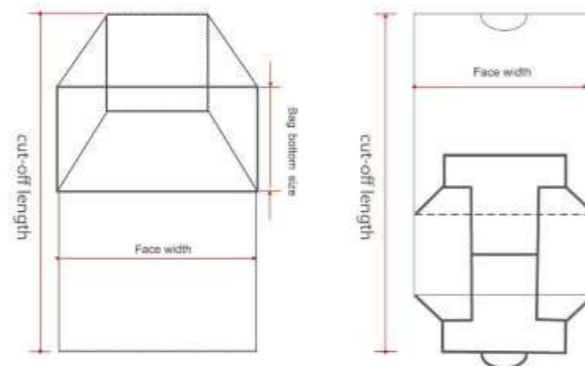
4. Model equipped American VALCO cold spray adhesive system for bag side seal, ensure high-speed state.

5. Side sealing and adjust glue volume with mechanical speed automatic, save glue.

6. Equipped with American LINCOLN lubricating oil system and paper jam alarm.

### Technical Information

MODEL	SBH150
Paper Roll Width	295mm-640mm
Cut-off length	195-385mm
Face Width	80-200mm
Bag Bottom Size	50-100mm
Paper Thickness	38-130gsm
Roll Diameter	≤1200mm
Material Core Diameter	φ76mm
Max.Speed	250pcs/min
Total Power	9kw
Weight	about 5500kg
Machine size	8600mmx1500mmx1650mm



Italy RE tension system & USA FIFE WEB guiding system



USA VALCO cold spray adhesive system



Bag production part



Electric control



MITSUBISHI servo drive system



## SBH 290

Adjustable Roll To Square Bottom Paper Bag Making Machine



### Introduce

SBH series SOS bag making machine is designed to manufacture square bottom paper bags from paper roll in blank or printed. Side gluing, tube forming, cutting, bottom creasing, bottom gluing, bottom forming and final product out feed can be completed within one time by this machine.. It is ideal equipment for making paper bag for foodstuff bag, shopping bag and so on. The machine use German machinery manufacturing technology and

idea , by the high speed movement the central control system(CPU) control,touch screen display,servo motor control system bag length and can produce various specifications of the paper bags.SBH290 Basic possibility to add servo patch unit or servo open-window unit to produce transparent window or hand paper bag,thus providing client with more value.

1.Equipped with Japan Mitsubishi servo system and SICK photocell for correction,tracking the printed material accurately . minimize the adjustment and preset time.

2.Equipped with Mitsubishi electric control system. Mitsubishi motion controller(CPU),through the integration of and optical fiber to realize high speed and high precision,motion control,production flow test.The touch screen display, the operation function is clear and has good human-machine interface.

3.Equipped with German BST automatic WEB guiding system,can make you reduce the waste and improve efficiency.

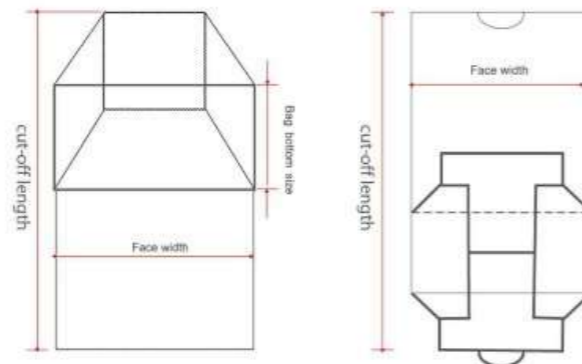
4.Model equipped American VALCO cold spray adhesive system for bag side seal,ensure high-speed state.

5.Side sealing and adjust glue volume with mechanical speed automatic,save glue.

6.Equipped with American LINCOLN lubricating oil system and paper jam alarm.

### Technical Information

MODEL	SBH290
Paper Roll Width	395mm-910mm
Cut-off length	280-530mm
Face Width	120-290mm
Bag Bottom Size	70-150mm
Paper Thickness	50-150gsm
Roll Diameter	≤1200mm
Material Core Diameter	φ76mm
Max.Speed	220pcs/min
Total Power	15kw
Weight	about 9000kg
Machine size	9600mmx2800mmx1800mm



Italy RE tension system & German BST guiding system



USA VALCO cold spray adhesive system



Bag production part



Electric control



Mechanical drive



# SBH 450

## Adjustable Roll To Square Bottom Paper Bag Making Machine



### Introduce

SBH series SOS bag making machine is designed to manufacture square bottom paper bags from paper roll in blank or printed. Side gluing, tube forming, cutting, bottom creasing, bottom gluing, bottom forming and final product out feed can be completed within one time by this machine.. It is ideal equipment for making paper bag for foodstuff bag, shopping bag and so on. The machine

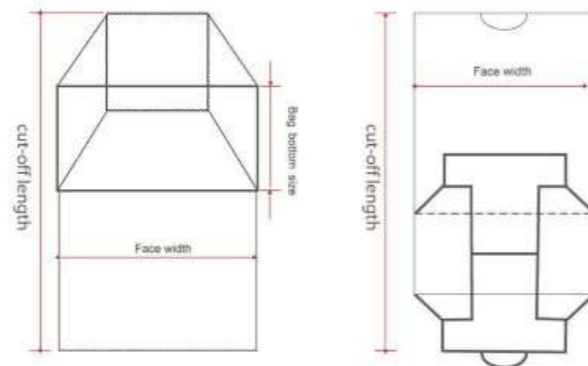
use German machinery manufacturing technology and idea , by the high speed movement the central control system(CPU) control, touch screen display, servo motor control system bag length and can produce various specifications of the paper bags. SBH450 can add the auto handle unit

1. Servo adjustable former, adjust the face width & bottom size automatically. Greatly reducing the debugging time.
2. The drum is equipped with suction device and the running will be more stable.
3. Equipped with Mitsubishi electric control system. Mitsubishi motion controller(CPU), through the integration of and optical fiber to realize high speed and high precision, motion control, production flow test. The touch

4. Equipped with German BST automatic WEB guiding system, can make you reduce the waste and improve efficiency.
5. Model equipped American VALCO cold spray adhesive system for bag side seal, ensure high-speed state.
6. Equipped with American LINCOLN lubricating oil system and paper jam alarm.

### Technical Information

MODEL	SBH450
Paper Roll Width	618-1310mm
Cut-off length	368-762mm
Face Width	205-450mm
Bag Bottom Size	89-180mm
Paper Thickness	70-180gsm
Roll Diameter	≤1500mm
Material Core Diameter	φ76mm
Max.Speed	180pcs/min
Total Power	16kw
Weight	about 11000kg
Machine size	13000mmx3200mmx2000mm



Servo adjustable former, adjust the face width & bottom size automatically



The drum is equipped with suction device and the running will be more stable



Bag production Part



15" touch screen

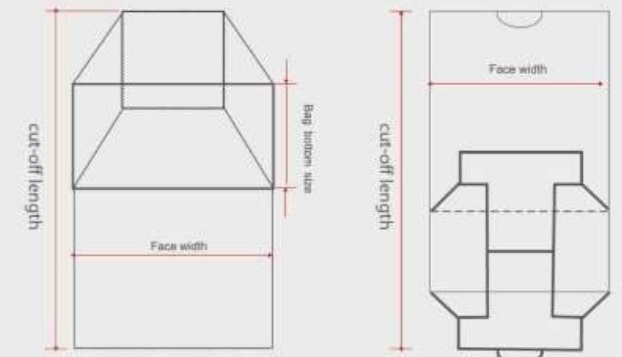


Mechanical drive



## SBH 290W+PAV02

Adjustable Roll To Square Bottom Paper Bag Making Machine + Servo Patch Unit



### Introduce

SBH series SOS bag making machine is designed to manufacture square bottom paper bags from paper roll in blank or printed. Side gluing, tube forming, cutting, bottom creasing, bottom gluing, bottom forming and final product out feed can be completed within one time by this machine.. It is ideal equipment for making paper bag for foodstuff bag, shopping bag and so on. The machine use German machinery manufacturing technology and

idea , by the high speed movement the central control system(CPU) control,touch screen display,servo motor control system bag length and can produce various specifications of the paper bags. SBH290W Basic possibility to add servo patch unit or servo open-window unit to produce transparent window or hand paper bag,thus providing client with more value.

1.Equipped with Japan Mitsubishi servo system and SICK photocell for correction,tracking the printed material accurately . minimize the adjustment and preset time.

2.Equipped with Mitsubishi electric control system. Mitsubishi motion controller(CPU),through the integration of and optical fiber to realize high speed and high precision,motion control,production flow test.The touch screen display, the operation function is clear and has good human-machine interface.

3.Equipped with German BST automatic WEB guiding system,can make you reduce the waste and improve efficiency.

4.Model equipped American VALCO cold spray adhesive system for bag side seal,ensure high-speed state.

5.Side sealing and adjust glue volume with mechanical speed automatic,save glue.

6.Equipped with American LINCOLN lubricating oil system and paper jam alarm.

### Technical Information

MODEL	SBH290W
Paper Roll Width	395mm-910mm
Cut-off length	280-530mm
Face Width	120-290mm
Bag Bottom Size	70-150mm
Paper Thickness	50-150gsm
Roll Diameter	≤1200mm
Material Core Diameter	φ76mm
Max.Speed	220pcs/min
Total Power	15kw
Weight	about 9000kg
Machine size	9600mmx2800mmx1800mm

MODEL	SBH-PAV02	
GENERAL MODEL	SBH150	SBH290
Max.Paper Width	650mm	920mm
Die Cutting Range (length)	25-150mm	25-150mm
Die Cutting Range(Width)	25-150mm	25-150mm
Patch Range(length)	40-220mm	40-220mm
Patch Range(Width)	25-180mm	25-180mm
Max.Ring-die Diameter	400mm	400mm
Inner Diameter Of Ring-die Core	75mm	75mm
Inner Side Distance Of Car Wall	1200min	1200min



Italy RE tension system & German BST guiding system



USA VALCO cold spray adhesive system



Bag production part



Electric control



Mechanical drive



## SBH 450HD

Fully Auto Roll Feeding Paper Shopping Handle Bag Machine



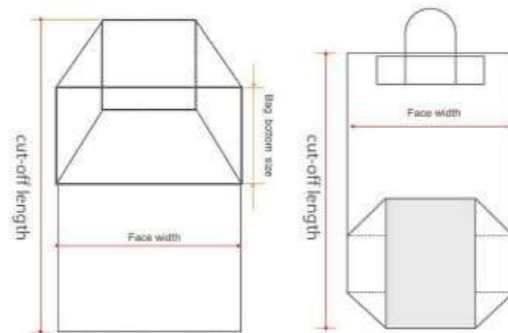
### Introduce

Fully Auto Roll feeding Paper Shopping Handle Bag Machine takes roll paper, reel reinforced paper and paper twist rope as raw material, with one time finish continuous process of paper handle manufacturing, handle patching, tube forming, guesst forming, bottom forming compaction output. Especially suitable for clothing, food, sports brand or luxury brands products'

outside bag production. Truly realize fully automatic production. Based on the stability of SBH450 basic model for running a long time, after adding the servo flat handle making unit, servo handle pasting and input unit, our SBH450-HD Auto Roll feeding Paper shopping Handle Bag Machine will also have a very stable performance.

### Technical Information

Paper Roll Width	660-1290mm(618-1310mm w/o handles)
Roll Diameter	≤1500mm
Material Core Diameter	φ76mm(3")
Paper Thickness	90-160gsm
Cut-off length	380-640mm(368-762mm w/o handles)
Face Width	240-450mm(205-450mm w/o handles)
Bag Bottom Size	89-180mm
Max.Speed	120pcs/min
Total Power	28kw
Weight	≈18000kg
Machine size	L16000mmxW4800mmxH2400mm



- 1.Servo modular design for the whole machine. Use 16 servo motors totally, divided into: servo handle making unit, servo handle pasting and input unit, servo pre-indentation unit and SBH450 basic model. It is significance is: After purchasing the SBH450, If customers need to upgrade to SBH450-HD, only need to buy a servo handle making unit, servo handle pasting and input unit to make the production full-automatic in line.
- 2.Servo adjustable former, adjust the face width & bottom size automatically; greatly reducing the debugging time.
- 3.The drum is equipped with suction device and German BECKER air pump, makes the running more stable.
- 4.Equipped with Mitsubishi electric control system, Mitsubishi motion controller (CPU), to realize high speed and high precision, motion control, production flow test.

- 5.Equipped with German BST automatic WEB guiding system, can make you reduce the waste and improve efficiency.
- 6.Model equipped American VALCO spray adhesive system for bag side seal. The glue volume adjusted automatically along with the operation speed. And will recycle and clean the system automatically. Won't waste the glue.
- 7.Handle making unit combines American VALCO cold glue system and MELTON hot glue system makes the production more economical and efficient. Handle pasting combines Water-based adhesive and hot melt glue, makes the pasting firmer.
- 8.Equipped with American LINCOLN lubricating oil system and paper jam alarm.



Servo adjustable former, adjust the face width & bottom size automatically



The drum is equipped with suction device and the running will be more stable



Mechanical drive



Handle Convey Unit



Handle pasting combines Water-based adhesive and hot melt glue, makes the pasting firmer.



## SBH 450-518TH

Fully Auto Roll Feeding Flat Handle Paper Bag Making Machine



### Introduce

Fully Auto Roll feeding Flat handle paper bag making machine takes roll paper, roll paper handle as raw material with one time finish continuous process of flat handle manufacturing, handle patching, tube forming, gusset forming, bottom forming, compaction output. Especially suitable for quantity production of shopping bags of clothing and food. Truly realize fully automatic production.

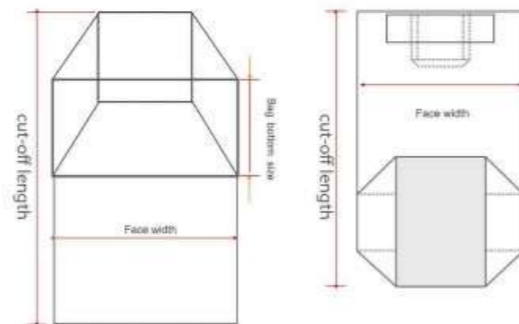
Flat handle (inside) paper bag has the same weight capacity with the normal handle bag with a very

low-cost handle manufacture. The flat handle inside the bag greatly saves the packing case size and the cost. And the normal stable speed can reach 120PCS-150PCS per minute. The operation of the machine is simple and efficient so it is much welcomed in the market.

Based on the stability of SBH450 basic model for running a long time, after adding the servo flat handle making unit, our SBH450-518 TH Fully Auto Roll feeding Flat handle paper bag making machine will also have a very stable performance.

### Technical Information

Paper Roll Width	618-1310mm
Cut-off length	368-762mm
Face Width	205-450mm
Bag Bottom Size	89-180mm
Paper Thickness	90-160gsm
Roll Diameter	φ 1500mm
Material Core Diameter	φ 76mm
Paper Rope Roll Width	78-94mm
Flat Rope Width	10-16mm
Paper Patch Width	52mm
Paper Patch Length	160-170mm
Max.Speed	150pcs/min
Total Power	18.5kw
Weight	16000kg
Machine size	16000mmx3500mmx2500mm



1. Servo modular design for the whole machine. Divided into: servo flat handle making unit and SBH450 basic model. Indeed realize that after purchasing the SBH450, if customers need to upgrade to SBH450-518 TH, only need to buy a servo flat handle making unit to make the production full-automatic in line.

2. Servo adjustable former, adjust the face width & bottom size automatically; greatly reducing the debugging time.

3. The drum is equipped with suction device and German BECKER air pump, makes the running more stable.

4. Equipped with Mitsubishi electric control system, Mitsubishi motion controller (CPU), The touch screen

display, the operation function is clear.

5. Equipped with German BST automatic WEB guiding system, can make you reduce the waste and improve efficiency.

6. Model equipped American VALCO spray adhesive system for bag side seal. The glue volume adjusted automatically along with the operation speed. And will recycle and clean the system automatically. Won't waste the glue.

7. Equipped with American LINCOLN lubricating oil system and paper jam alarm.



Servo adjustable former, adjust the face width & bottom size automatically



The drum is equipped with suction device and the running will be more stable



Mechanical drive



Flat Handle Making Unit





## FSB 1600

### Full-Servo Flat & Square (Flat & Satchel) Paper Bag Machine



#### Introduce

FSB1600 Full-Servo Flat & Square (Flat & Satchel) Paper Bag Machine is a coned-bottom paper processing equipment which combines international advanced technology and demands at home and abroad, and is capable of gelatinizing and patching on original color or printed roll paper at one time with the same machine, applying side glue, drawroll, cutoff, gelatinizing at bottom, Shaping bag, count collection. The construction of the

whole machine is reasonable, compact. It is convenient to adjust, controlled by high speed CPU, and equipped with touch screen display. With servo motor controlling bag production speed, it can produce with single channel or dual channel (produce two bags at one time) with max. speed as high as 1000PCS/min. It is an ideal choice in replacing imported equipment.

1. Equipped with Japan Mitsubishi servo system and SICK photocell for correction, tracking the printed material accurately. minimize the adjustment and preset time.
2. Equipped with Mitsubishi electric control system, Mitsubishi motion controller (CPU), through the integration of and optical fiber to realize high speed and high precision, motion control, production flow test. The touch screen display, the operation function is clear and has good human-machine interface.
3. Equipped with ITALY Re TENSION system and Germany BST WEB guiding system, can make you

4. Equipped with Mitsubishi electric control system, Mitsubishi motion controller (CPU), to realize high speed and high precision, motion control, production flow test. The touch screen display, the operation function is clear.
5. Center web slitting for dual stream production sunhope weber rotary cutoff knives.
6. Enclosed USA Cole-Parmer primary gearing running in oil which is circulated by means of a pump
7. Bags are delivered vertically (on end) with a programmable counter to adjust bag count

#### Technical Information

Single Stream	Face Width(w/o gusset)	1.5 - 14.5 inches	39 - 368mm
	Face Width(with gusset)	2 - 12.5 inches	51 - 317mm
	Total Gusset	0.5 - 5 inches	13 - 127mm
Dual Stream	Face Width(w/o gusset)	1.5 - 7 inches	39 - 177mm
	Face Width(with gusset)	2 - 5.75 inches	51 - 146mm
	Total Gusset	0.5 - 3 inches	13 - 76mm
Cut-off Length Range		4 - 11.5 inches	102 - 292mm
Maximum Web Width		30 inches	762mm
Maximum Roll Diameter		47.2 inches	1200mm
Paper Substrate Range		20 - 40 pounds	30g/m <sup>2</sup> - 65g/m <sup>2</sup>
Minimum Seam Overlay		0.625 inches	16mm
Minimum Former Flap=Seam Overlay+Seam Offset		1 inch	25mm
Weight		≈3500kg	≈3500kg
Machine Size		6500mmx2000mmx1600mm	6500mmx2000mmx1600mm



Italy Re Tension System & Germany Bst Web Guiding System



Main Screen



USA VALCO cold glue system for dual stream



Collection Part



Forming Part



## FSB 650

Full-servo High Speed Flat&satchel Paper Bag Machine



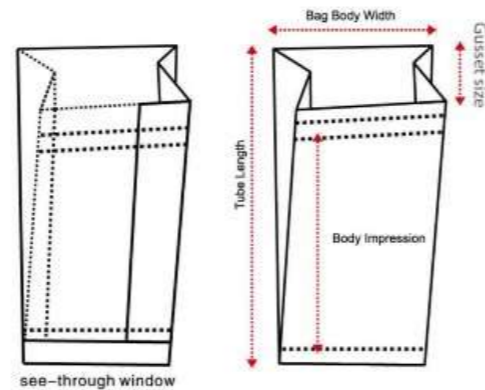
### Introduce

We developed FSB650 Full-Servo high speed Flat& Satchel paper bag machine using German technology for reference. The machine is suitable for paper roll, painted roll paper such as kraft paper, shiny paper, coated paper, craft paper roll material, from pre-puncturing, side gluing, folding, tube forming, cutting, bottom folding and gluing, final product collection can be completed within one time by this machine. And accord-

ing to the customer's requirement, we can also add the servo pre-increasing function. This function can make it more convenient to seal the bag, and make the bag more beautiful. This machine is more convenient to operate, and is the ideal equipment for producing a variety of paper bags, bread bags and grocery bags and etc.

### Technical Information

Cut-off length	135-620mm
Bag Length	115-600mm
Bag body width	80-320mm
Gusset Size	25-100mm
Machine Max. Speed	450 bags/min
Paper Thickness	35-80g/m <sup>2</sup>
Unwinding Width	910mm
Unwinding Diameter	1200mm
See-through window width	50-200mm
Total Electric Power	19kw 380V
Machine Weight	5000kg
Machine Dimension	8500(L)*1900(W)*1900(H)mm



1. Machine use Mitsubishi Japan electrical control system, ensure the machine running more stable, with high speed and high precision, adopt humanized design touch screen.
2. Rollstand equipped with pneumatic and Mitsubishi tension control system, German BST WEB guiding system.
3. There are 8 servo motors functioning synchronously from pre-puncturing, drawing, increasing, cutting,

- bottom folding, gluing and collecting.
4. Servo adjustable increasing function can make it more convenient to seal the bag, and make the bag more beautiful.
5. Machine use German SICK color mark sensor, accurately tracking printed material.
6. Collection unit uses special system, sufficiently solving the collection and counting problem from Min. to Max. bags.



The unwinding with film packing device equipped with Mitsubishi tension control system and Germany BST web guiding system



Perfect High Speed Perforating System by Servo Motor



Pre-Creasing on Bag body System by Servo Motor



Color code tracking system



Paper bag collecting system