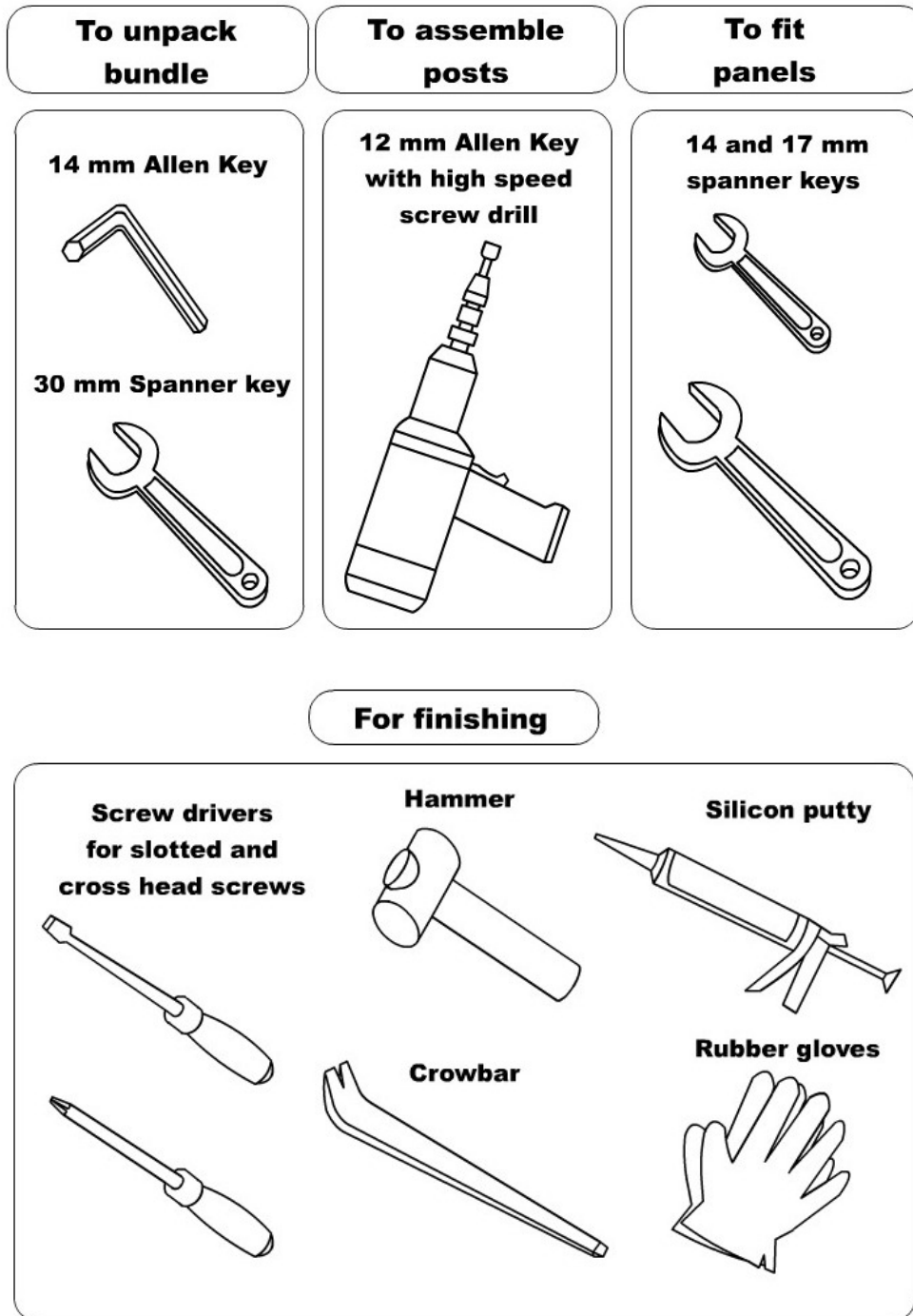


Procedure for Erection

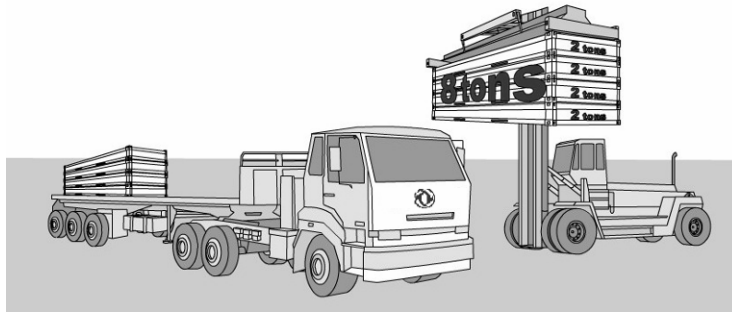
1. Required Tools



2. Unpacking & assembling

(1) Unloading

WARNING: Do not handle the bundle with forklift truck or side stacker



Move the bundle units away from the truck, and put them on the ground where they will be unpacked and assembled.

(2) Unpack the bundled unit



The bundle unit



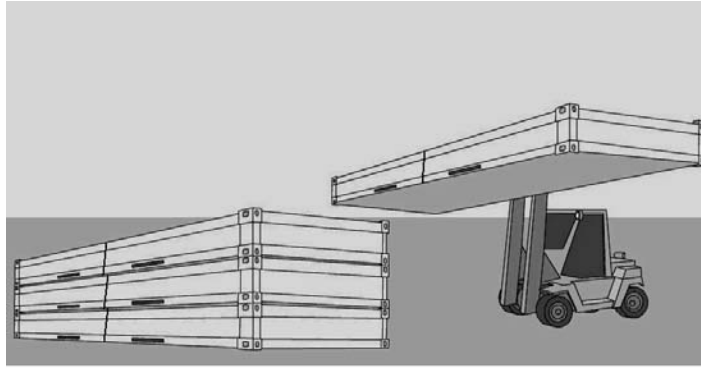
Remove the long angle plate



Cut off the main belt



Dismantle the nut and bolt



Remove the top bundle

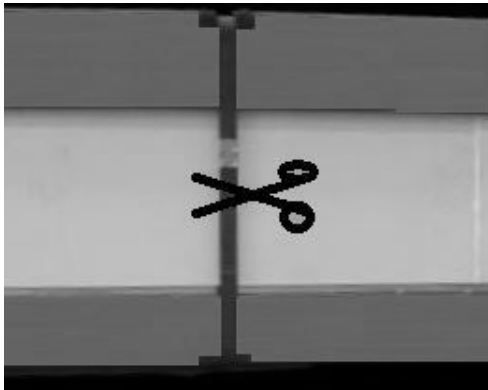
(3) Unpack the bundle



Put the bundle onto the level ground



Adjust the bottom side rail



Dismantle the belt



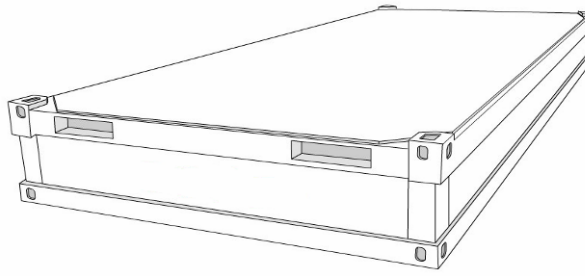
Dismantle the bolts from the short posts

Dismantle the 8 pieces of bolts (M16x40) from four short posts at each corner in pallet condition by use of allen key.

Remove the top bundle and put down it on the ground by forklift, make sure the ground is even. And then move four short corner posts away.

(4) Lift the roof and remove all parts in the bundle

Position the kit in the assembly area



Lift the roof through the holes of the corner castings

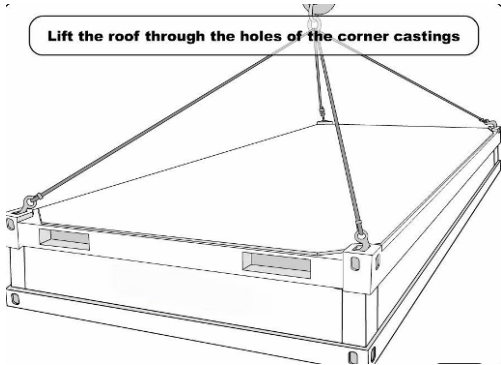


Illustration A



Illustration B

Attention: When unpacking and during using, keep the floor dry and avoid insolation.



Two ways can be used to lift the top assembly, Illustration A and B can be chosen. we always choose B to lift the top assembly.



All parts of one house



move all parts away

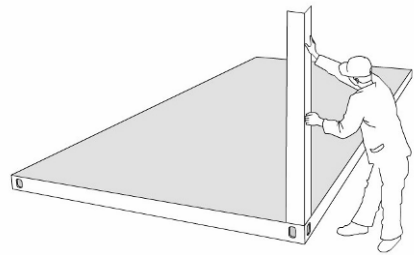
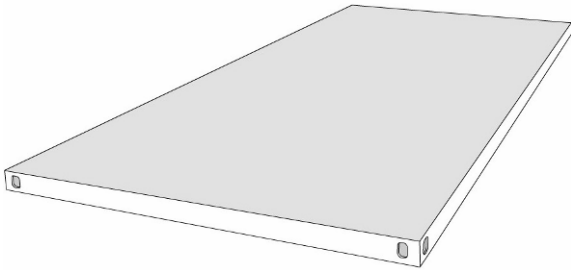


The base structure



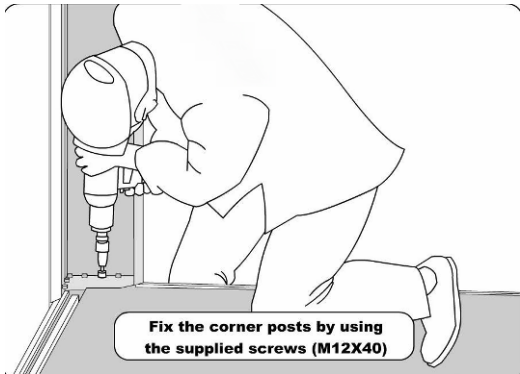
(5) Install the corner post

Position the corner posts



The base structure

Place the long post on the corner post



Fix the corner posts by using the supplied screws (M12X40)



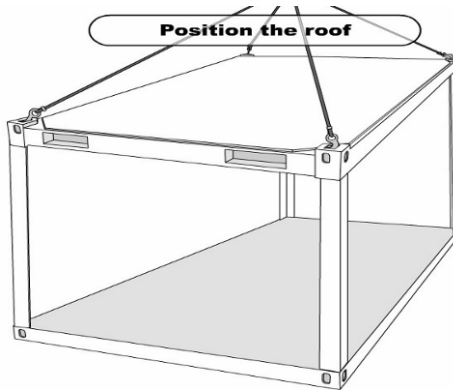
Fix post by screws(M12×40)

Four post been Installed

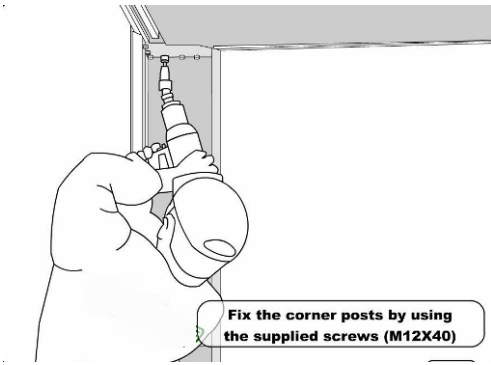
Replace 4 pieces of short posts with 4 pieces of standard corner posts

(6) Install roof

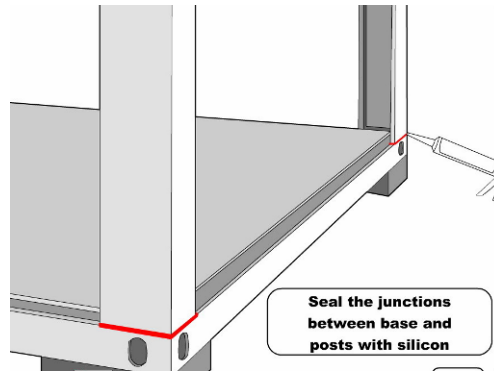
Position the roof



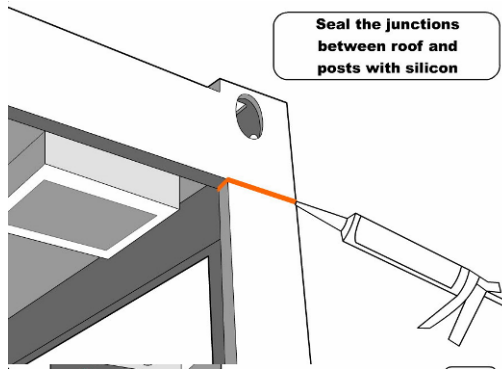
Position the roof, be sure the top corner casting corresponding the corner post.



Fix post by screws(M12×40)



cover the sealant

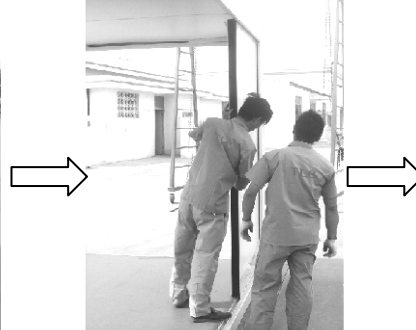


Cover the sealant

(7) Insert the small panels (Insert four water pipe before insert 14 small panels)



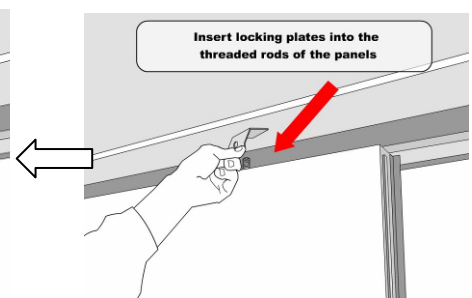
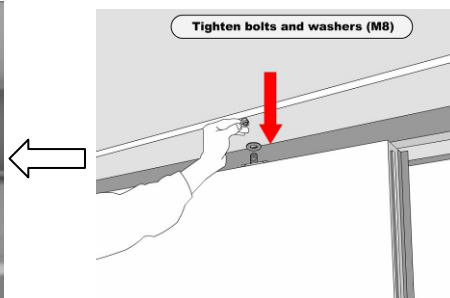
Place the first panel

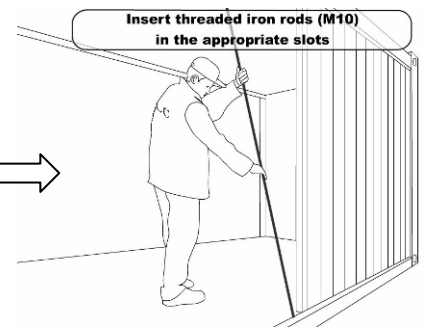
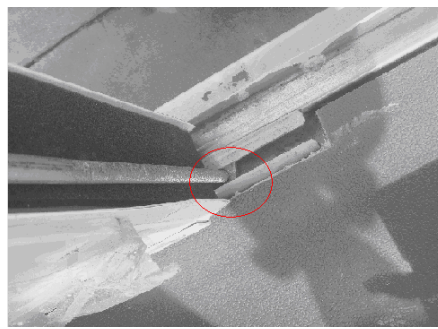


push it in the right position

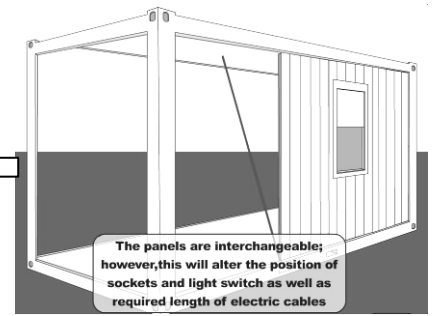
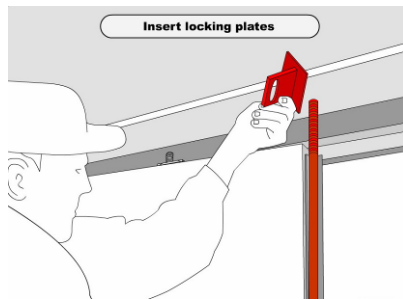
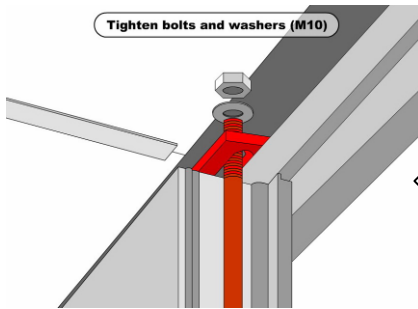


place the plate





Place the rod



Place the rod



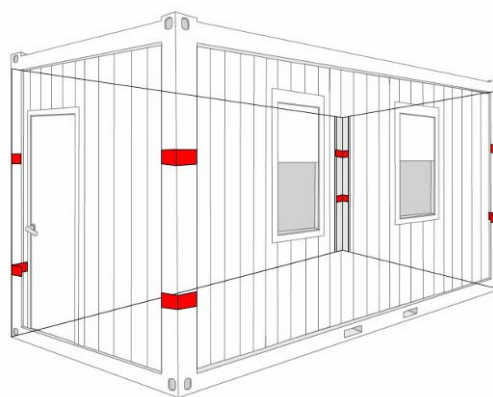
Insert the end small panel



the Installed house right side

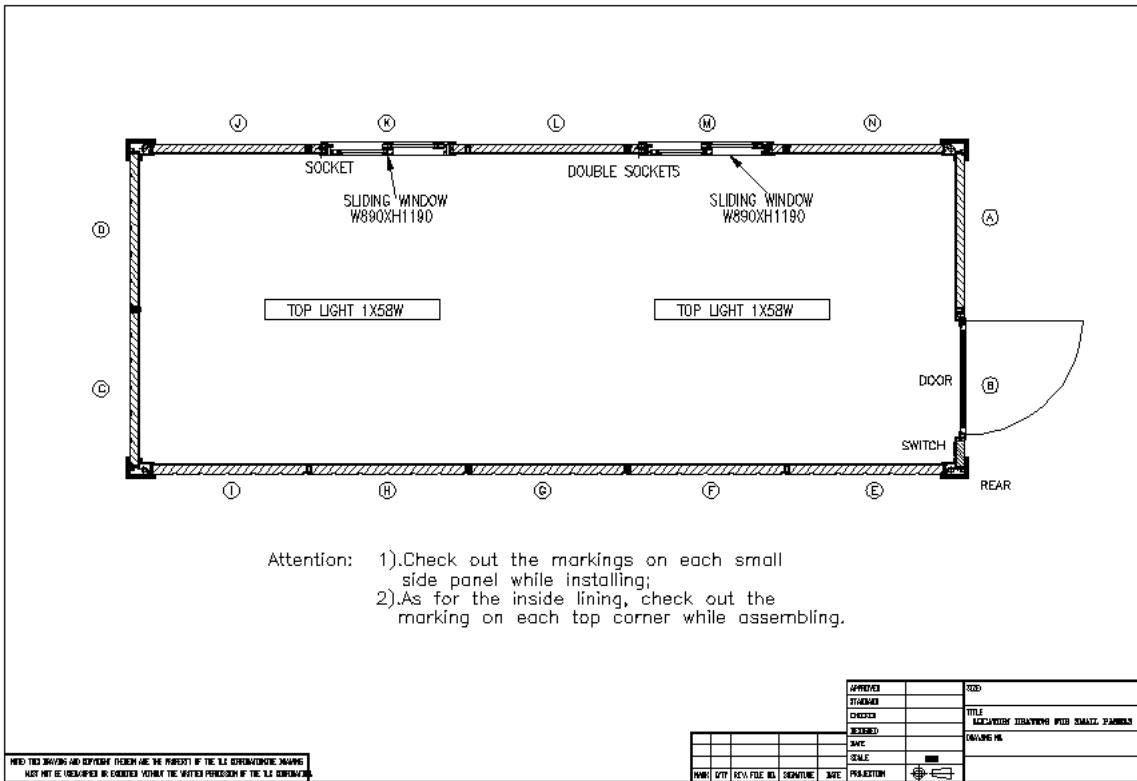


the Installed house end side



There are tow corner post reinforcements in each post.

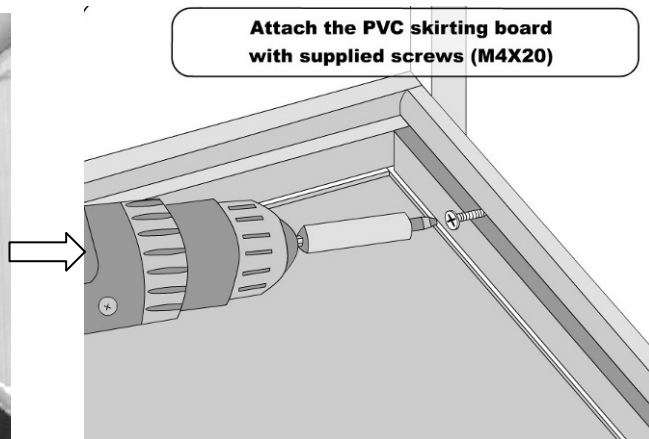
Install panels according to the standard layout as below



(8) Install PVC lining, door sill and door handle



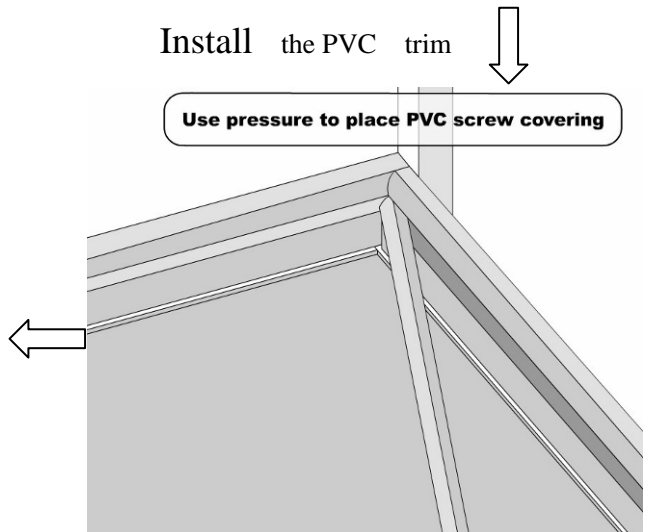
Install the top and corner PVC lining



Install the PVC trim



Install cover lining



Install the PVC trim



Install door handle

3. Layout after assembly



After assembly

- (1) Check the assembled condition of total house and make it sure every screw and bolts are securely tightened.
- (2) Determine fastness of wire terminal until container reaches destination. if loose item found, fasten them. Never use it until checking the power is qualified.
- (3) Try out all electrical accessories such as circuit breaker, exhaust fan, fluorescent lamps and electrical appliances through the sockets after connection of electrical power source.
- (4) Client shall check the power after using for a period (container remaining in original place, one year in general) or transferring occurred.