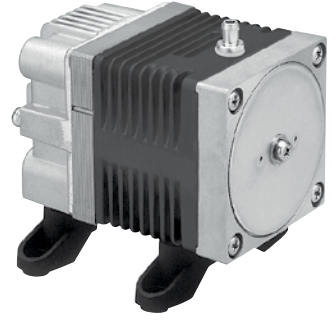
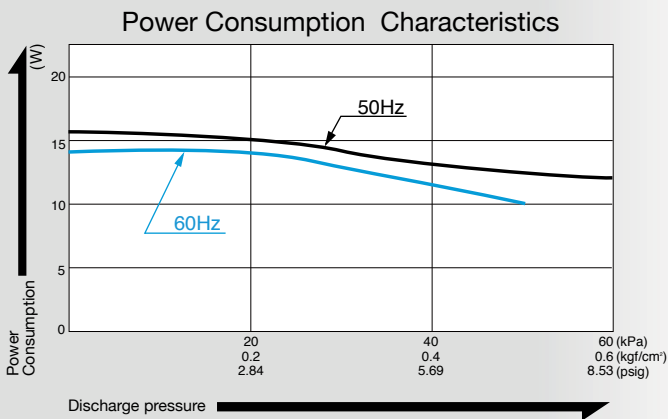
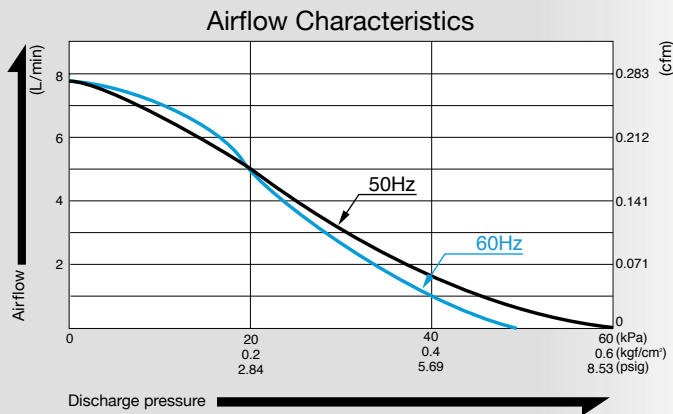


# Compressor

## Model AC0102



### Airflow & Power Consumption

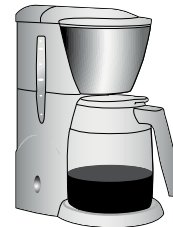


### Specifications

Rated Pressure	20 kPa (0.2 kgf/cm <sup>2</sup> ) 0.2 bar 2.9 psig	
Rated Airflow	5 L/min 0.177 cfm	
Maximum Pressure	40 kPa (0.4 kgf/cm <sup>2</sup> ) 0.4 bar 5.8 psig	
Rated Voltage	115 V AC	230 V AC
Power Consumption	14 W	15 W
Rated Frequency	60 Hz	50 Hz
Rated Performance (MTTF)	10,000 hours	
Outlet	6 mm O.D. hose barb	
Duty Cycle	Continuous	
Coil Insulation Class	Class B for UL	
Mounting Dimensions	48 (L) x 62 (W) mm 1-57/64" (L) x 2-7/16" (W)	
Weight	0.7 kg 1.54 Lbs	
Leadwire Length	200 mm 7-7/8"	

### Application Examples

Dripping Machine



Blood Pressure Tester



### Dimensional Outline Drawing (Unit: mm)

