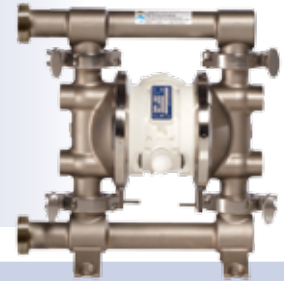


# Verderair VA-H20 FD



VA-H20 FD


VERDERAIR

## Technical data

Weight [kg]	All models	10
Suction lift [mwc]	Dry	4,6
	Wet	7,6
Temperature [°C]	Internals	SP 4 82
		TF / TO 4 104
Max. Particle size [mm]		2,4
Max. Viscosity (mPas)		10000
Certifications	Internals TF	EN1935/2004
	All models	FDA

## Code VA-H20 No.1 No.2 No.3 No.4 No.5 No.6 No.7

### no.1 Fluid section material

 S = 316 Stainless Steel, Ra: 3,2µm

### No. 2 Air Section material

 P = FDA compliant Polypropylene

### No. 3 Check Valve seat material

SE = SS seat with EPDM o-rings

ST = SS seat with PTFE o-rings


### No. 4 Check valve ball material

SP = Santoprene

TF = PTFE

### No. 5 Diaphragm material

SP = Santoprene

 TF = PTFE/EPDM 2 piece

TO = PTFE/EPDM overmolded

### No. 6 Fluid connections

D2 = DIN 11851, DN25, male

T2 = Tri-Clamp (ASME BPE), 1"

### No. 7 Pump Style

FD = Food grade design

## EXAMPLE PUMP TYPE

**VA-H20SP ST TF TO D2 FD**

NOTE not all combinations are available



II 2 GD c IIA T4

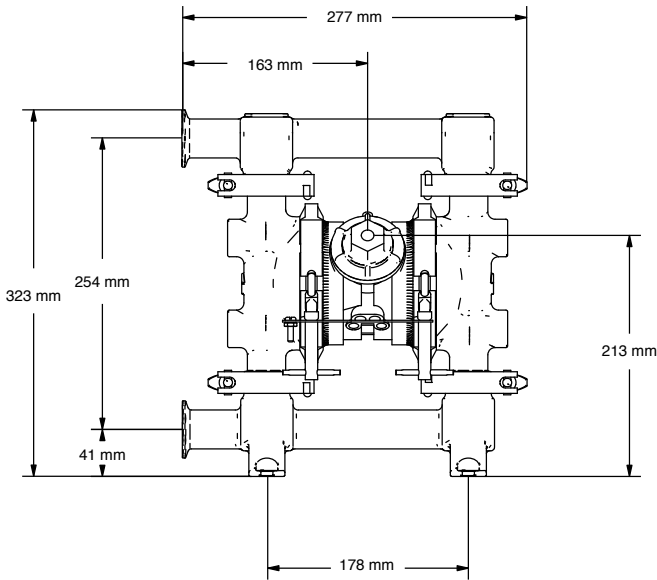
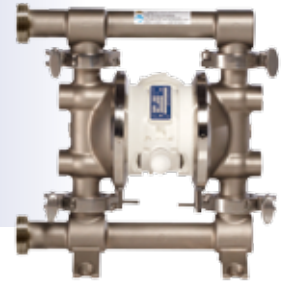


EN 1935/2004

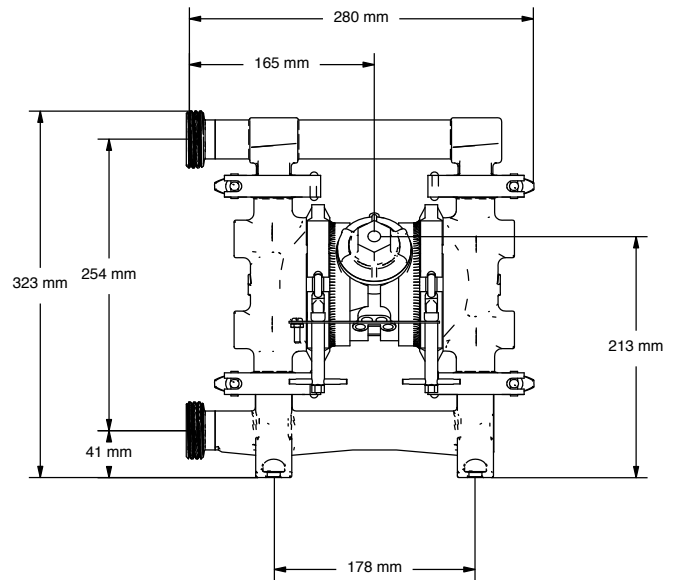


# Verderair VA-H20 FD

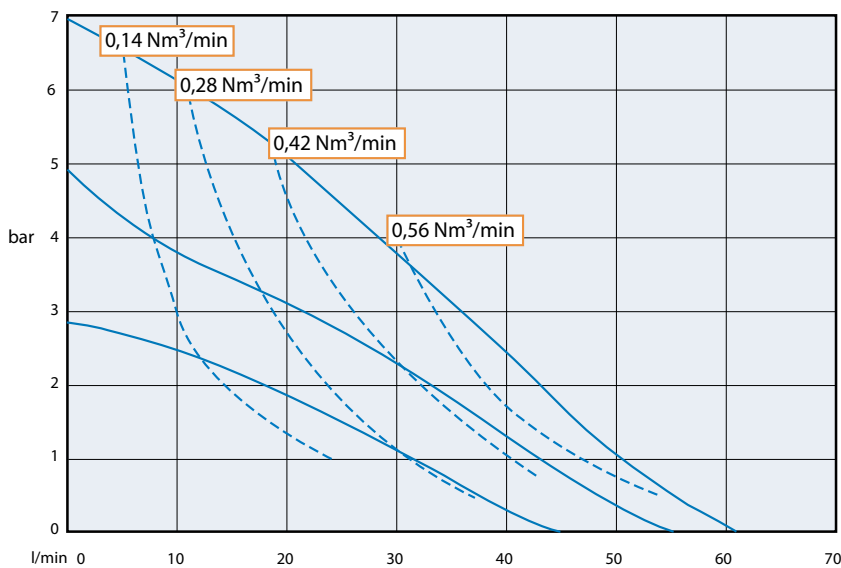
VA-H20 FD



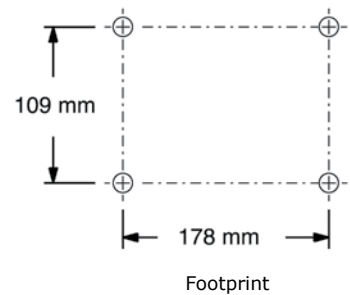
VA-H20\_FD Tri-Clamp



VA-H20\_FD Din



Air consumption



VA-H20\_FD\_Techno\_Rev01-2014\_EU\_(eu)

Find your local supplier at [www.verderair.com](http://www.verderair.com)

