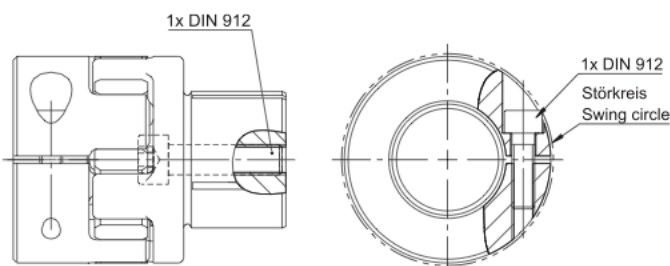


Elastomerkupplung SKS mit Spreizdorn und Klemmnabe

Elastomer coupling SKS with expanding mandrel and clamping hub



Merkmale

- Nabe aus hochfestem Aluminium
- Spreiznabe und Innenkonus aus Stahl
- Spielfreie Drehmomentübertragung durch Vorspannung
- Montagefreundlich, da steckbar
- Elektrisch isolierend
- Optimales Dämpfungsverhalten durch Elastomersterne in 98° Shore A Ausführung
- Hohe Temperaturbeständigkeit
- Niedriges Massenträgheitsmoment
- Ideal für Servomotoren
- Ausgleich von radialem, axialem und winkligem Versatz
- Weitere Elastomersterne härten lieferbar
- Sonderausführungen auf Anfrage

Bestellbezeichnung / Beispiel:

SKS-160 - 20H7 - 22H7 - A - 98 Sh A - U
 Typ+Größe Bohrung Durchmesser Material Elastomerstern Stern
 D1 D2 ungebohrt

Characteristics

- Hub made of high strength aluminium
- Expansible hub and inner cone made of steel
- Backlash-free torque transmission
- Easy assembly, connectible
- Electrically isolating
- Optimum damping behavior by spider(s) 98° Shore A execution
- High level of thermal stability
- Very low mass moment of inertia
- Ideal for servomotors
- Compensation of radial, axial and angular misalignment
- Various kinds of elastomer hardness of spiders
- Customized execution on demand

Order description / example:

SKS-160 - 20H7 - 22H7 - A - 98 Sh A - U
 Type+Size Bore diameter Material Elastomer Star Star
 D1 D2 undrilled

Standard Optionen / Standardized options

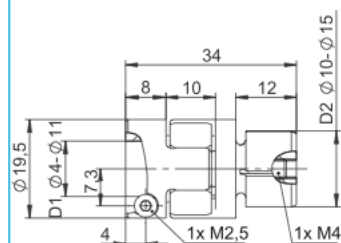


Material/material
 S=Stahl/steel
 E=Edelstahl/stainless steel

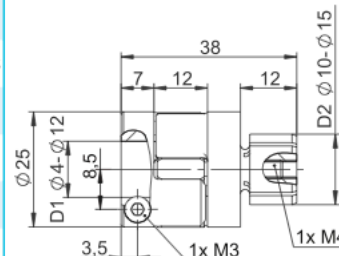
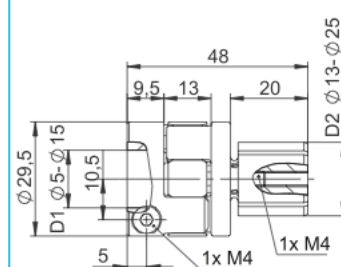
Shore Typ Elastomerstern/shore type elastomer spider
 80 Sh A, 92 Sh A, 64 Sh D-H, 64 Sh D

Elastomerstern/elastomer spider
 G=gebohrt/G=drilled

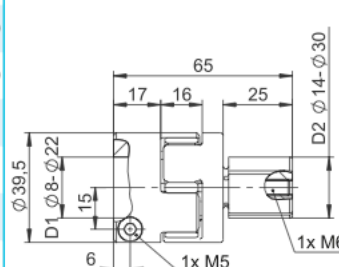
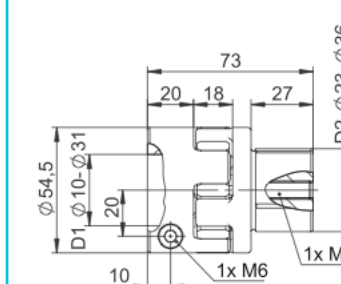
Gewünschte Optionen müssen im Bestelltext angegeben werden (Legende Symbole S. 7). Desired options have to be mentioned in the order text (key symbols p. 7).

SKS-5


R	B	Y	G		R	B	Y	G
5	1.8	3	6	Nennmoment [Nm] Nominal torque [Nm]	9	3	5	12
10	3.6	6	12	Maximalmoment [Nm] Max. torque [Nm]	18	6	10	24
51	17	31	74	Statische Drehfedersteife [Nm/rad] Static spring stiffness [Nm/rad]	241	84	160	328
518	125	262	796	Laterale Federsteife [N/mm] Lateral spring stiffness [N/mm]	846	274	470	1198
0.08	0.19	0.13	0.05	Max. lateraler Wellenversatz [mm] Max. lateral shaft misalignment [mm]	0.08	0.20	0.14	0.05
0.9	1.1	1.0	0.8	Max. angularer Wellenversatz [Grad] Max. angular shaft misalignment [Degree]	0.9	1.1	1.0	0.8
+0.8/-0.4				Max. axialer Wellenversatz [mm] Max. axial shaft misalignment [mm]	+0.9/-0.4			
19000				max. Drehzahl [rpm] max. speed [rpm]	15000			
4.0				Anzugsmoment der Schrauben M _A [Nm] Tightening torque of screws M _A [Nm]	4.0			
22.5				Störkreis [ø mm] Swing circle [ø mm]	26.0			

SKS-9

SKS-12


R	B	Y	G		R	B	Y	G
12.5	4	7.5	16	Nennmoment [Nm] Nominal torque [Nm]	17	5	10	21
25	8	15	32	Maximalmoment [Nm] Max. torque [Nm]	34	10	20	42
172	60	115	234	Statische Drehfedersteife [Nm/rad] Static spring stiffness [Nm/rad]	860	340	570	1240
654	153	336	856	Laterale Federsteife [N/mm] Lateral spring stiffness [N/mm]	2010	582	1120	2930
0.09	0.21	0.15	0.06	Max. lateraler Wellenversatz [mm] Max. lateral shaft misalignment [mm]	0.06	0.15	0.10	0.04
0.9	1.1	1.0	0.8	Max. angularer Wellenversatz [Grad] Max. angular shaft misalignment [Degree]	0.9	1.1	1.0	0.8
+1.0/-0.5				Max. axialer Wellenversatz [mm] Max. axial shaft misalignment [mm]	+1.2/-0.5			
13000				max. Drehzahl [rpm] max. speed [rpm]	10000			
9.0				Anzugsmoment der Schrauben M _A [Nm] Tightening torque of screws M _A [Nm]	12.0			
33.0				Störkreis [ø mm] Swing circle [ø mm]	43.0			

SKS-17

SKS-60


R	Y	G		R	Y	G
60	35	75	Nennmoment [Nm] Nominal torque [Nm]	160	95	200
120	70	150	Maximalmoment [Nm] Max. torque [Nm]	320	190	400
2060	1430	2980	Statische Drehfedersteife [Nm/rad] Static spring stiffness [Nm/rad]	3440	2290	4350
2560	1480	3696	Laterale Federsteife [N/mm] Lateral spring stiffness [N/mm]	3200	1780	4348
0.10	0.14	0.07	Max. lateraler Wellenversatz [mm] Max. lateral shaft misalignment [mm]	0.11	0.15	0.08
0.9	1.0	0.8	Max. angularer Wellenversatz [Grad] Max. angular shaft misalignment [Degree]	0.9	1.0	0.8
+1.4/-0.5			Max. axialer Wellenversatz [mm] Max. axial shaft misalignment [mm]	+1.5/-0.7		
7000			max. Drehzahl [rpm] max. speed [rpm]	6000		
32.0			Anzugsmoment der Schrauben M _A [Nm] Tightening torque of screws M _A [Nm]	60.0		
56.0			Störkreis [ø mm] Swing circle [ø mm]	67.0		

SKS-160
