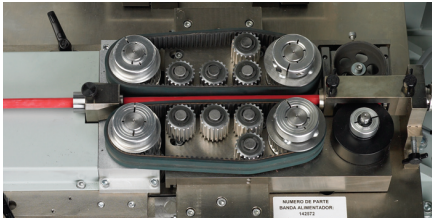


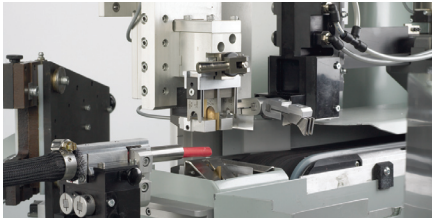
# MTX

## Ideal for

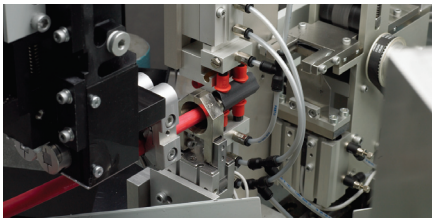
- Processing of stranded wire to 50mm<sup>2</sup> (1/0 AWG) (Max. OD is 16mm or 0.63").\*
- Standard stripping to 20 mm (0.83").  
Optional stripping to 40mm (1.5").
- Crimping of side feed, end feed, or loose piece terminals.
- Application of shrink tube.



Heavy-duty Servo Feed Drive



Heavy-duty Cutterhead and Grippers



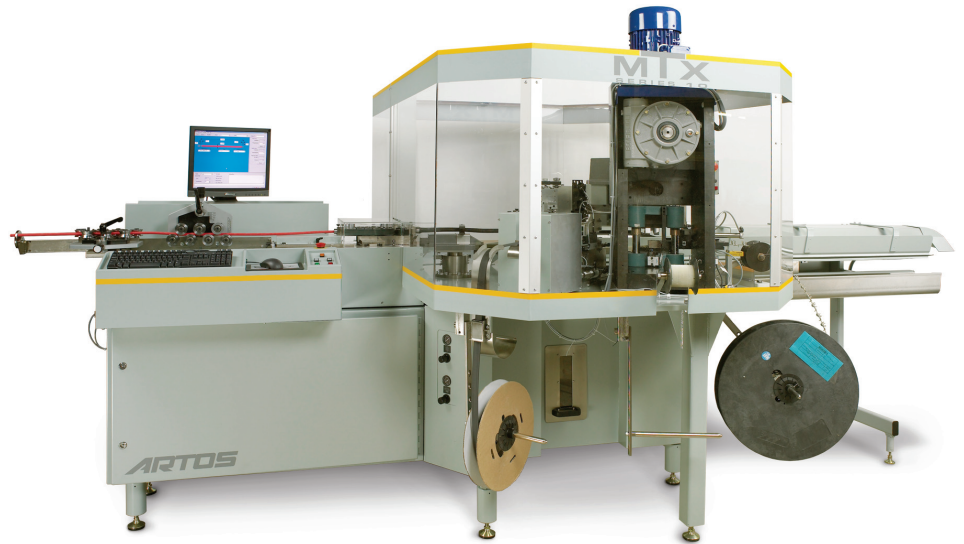
Heat Shrink Tube Insertion Unit



EPS 10,000 Crimping Unit

\*Maximum wire size may vary depending on wire standing and insulation materials.

## MTX SPECIAL APPLICATION HEAVY-DUTY LARGE WIRE PROCESSING



### MTX-10-HD Features

- Heavy-duty Wire Straightener
- Heavy-duty Feed Drive System
- Large Wire Guide Kit
- Heavy-duty Cutterhead
- Heavy-duty Gripping Units
- Special Extended Stroke Servo Swing Arms
- Special Toolholder with Radius Stripping Blade
- EPS 10,000 Press for crimping up to 100 KN (Approx. 22,000 lbs.)
- Optional External Stripping Unit for stripping up to 40mm (1.5")
- Optional Heat Shrink Tube Insertion Unit
- Optional Terminal Run-out Sensor
- Optional Terminal Feed Sensor
- Optional Bowl Feeding Systems for Loose Terminals
- Optional Automatic Removal of Completed Wires

### Benefits

- Quality output by automating crimping of wires up to 50mm<sup>2</sup> (1/0 AWG).
- Labor savings with automatic heat shrink application.
- Quick change-over (programmable set-up features) of wire and terminals for production of low production lot sizes.

### Configurations Available

- MTX-10-HD – 1 or 2 Crimping Stations
- Stations for Heat Shrink Tube Insertion
- Stations for Long Stripping



Note: Artos Engineering offers assistance to further integrate your MTX System to accommodate your production needs. Specifications subject to change without notice.

Artos Engineering Company, P.O. Box 1650, Waukesha, WI 53187 U.S.A.  
Phone (262) 524-6600 • FAX (262) 524-0400 • [www.artosnet.com](http://www.artosnet.com)  
email: [sales@artosnet.com](mailto:sales@artosnet.com)

**ARTOS**  
ENGINEERING COMPANY