

CSN810 TableTop™

Meeting operational needs



Overhead dimensioning

for unrestricted handling of objects and increased throughput. The overhead sweeping laser rangefinder captures object dimensions quickly and accurately. Embedded software eliminates the need for an extra PC and built-in automatic calibration reduces the setup time.



Integrated weighing

by METTLER TOLEDO ensures fast and reliable measurements. Rugged industrial quality means fail safety and longevity. Integrated design translates into uninterrupted and uncompromised reliability. User-friendly display provides easy readability of measurements.



Reliable identification

with barcode reader to maximize read rate. Handheld functionality provides non-restrictive handling of objects. Reading performance of most common barcodes reduces need for manual entry of barcode data, securing efficiency and accuracy.



Data Merging

with embedded application software captures, merges and displays object data on a graphical interface; always a clear overview of the measuring process.

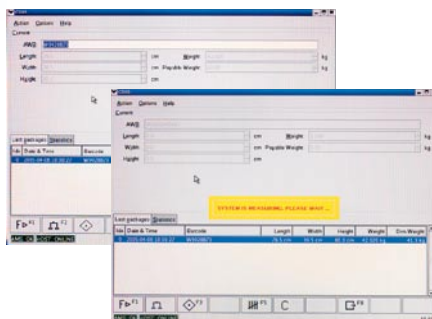


CSN810 TableTop™

CARGOSCAN™ continues to be the leader in advanced dimensioning and data capture with a wide range of static and dynamic solutions.

The CSN810 TableTop™ is a compact and robust workstation designed to capture the dimensions, weight and identification of objects, merge the data into a single string, thereby eliminating the need to carry out multiple operations.

The modular design provides the possibility to build up customised configurations.

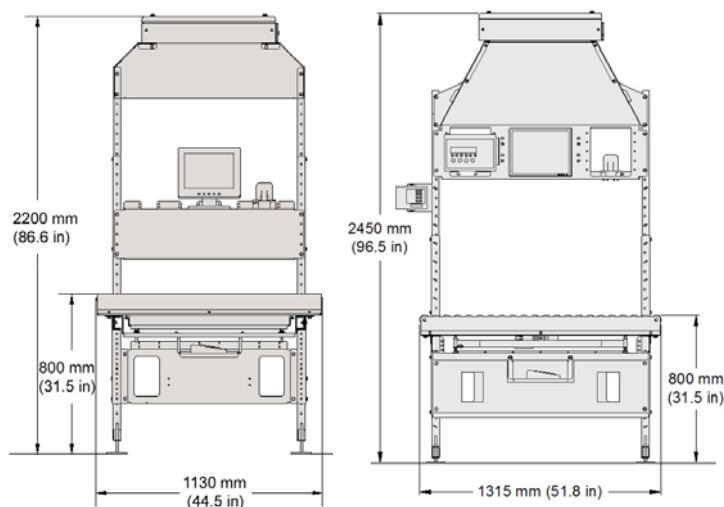


User-friendly graphical interface

Technical data
CSN810 TableTop™

Typical Configuration

- Completely modular design. Hardware and software components can be purchased separately or as a proven weighing, dimensioning and identification workstation
- CSN810 Dimensioner for reliable dimensions
- Embedded application software eliminates need for additional PC; protect against viruses
- Recommended METTLER TOLEDO IND425 CC150 Scale
- Wireless handheld Datalogic Gryphon-R M100 barcode reader for non-restrictive handling of objects
- 15" TFT Monitor at eye level for easy readability of captured data
- Standard USB keyboard for manual data entry
- XL-version available for flexibility to handle larger goods
- CS2200LX display ¹⁾
- Height-adjustable, ergonomically-friendly stand designed to meet the toughest conditions
- Integrated flat or roller table
- Remote access to historic data logging information
- System interfaces include 4 serial and 2TCP/IP ports
- Both hardware and software sealing capabilities available
- International Legal for Trade certifications



Standard version. Roller and flat table has same physical dimensions.

XL-version. Only available with roller table.

Dimensioner accuracy	± 5 mm (± 0.2 in.) ¹⁾
Maximum object size (LxWxH)	Standard version: Flat table: 1150 x 750 x 700 mm (45 x 30 x 28 in.) Roller table: 1000 x 600 x 840 mm (39 x 24 x 33 in.) XL-version: Roller table: 1200 x 900 x 900 mm (47 x 35 x 35 in.)
Minimum object size (LxWxH)	Flat table: 50 x 50 x 50 mm (2 x 2 x 2 in.) ¹⁾ Roller table: 100 x 50 x 50 mm (4 x 2 x 2 in.) ¹⁾
Minimum object detected	Width and length >35mm (1.4 in) and height >10 mm (0.4 in); minimum will vary dependent on background
Minimum weight	0.4 kg (0.9 lbs.) ³⁾
Maximum weight	Flat table: 150 kg (331 lbs.) ²⁾ Roller table: 60 kg (132 lbs.)
Scale resolution	± 20 g (0,04 lbs.) ²⁾
Barcodes	2/5 family, Code 39 (plus Code 32, Cip 39), EAN/UPC, ISBN/ISSN, EAN 128, Code 128, ISBT 128, Code 93, Code 11, CODABAR, TELEPEN, PLESSEY, Code MSI, Code Delta IBM
Object throughput	Approx. 400 per hour (dependent on operation)
Measurement time	~ 3 sec
Object shape	Rectangular solid objects. Other shapes may vary from quoted specifications.
Object surface characteristics	Most surfaces meet quoted specifications. Variances are sometimes encountered when the surface is highly polished, chrome, exceptionally glossy and/or black, covered with shrink/bubble wrap, Styrofoam or polystyrene.
Object orientation	Place most stable surface down. There are no other restrictions.
Operational temperature	0° to 40°C (14° to 104°F) non-condensing
Power	115V 60Hz, or 230V 50Hz
Laser type	658 nm visible red laser - Class 2
System Interfaces	4 - Serial, 9 pin female D sub. RS232. The CS2200LX Display connects to one of these ports. 2 - TCP/IP 10/100 Mbs Ethernet, RJ45 female

1) Legal for Trade approved.

2) May vary with use of other METTLER TOLEDO compatible scales.



OIML R129/R76 and NTEP certificates
 Compliant to MID and NAWI
 Compliant to health and safety regulations
 Internet: <http://www.mt.com>
 Worldwide service

Subject to technical changes
 © 05/2008 Mettler-Toledo Cargoscan AS
 Printed in Norway 792050
 CSN MarCom Oslo

www.mt.com/dimensioning

Visit for more information