

# MONITORING DEVICE

# EVB300

Communication gateway for Envertech microinverters.



**NEW RELEASE!**



## COST-EFFECTIVE

Lowest price compared to any similar competitor product.



## SMART

Online and local smart monitoring and management of Envertech PV system.



## Bi-DIRECTIONAL

MI output power control.  
Remotely setting or upgrading monitors and MIs.



## FLEXIBILITY

Connected by WIFI or RJ45 cable.  
Adapted to both single and 3-phase systems.

## Model

**EVB300**

### Features

Communication Method	PLCC (Power Line Carrier Communication)
Ethernet Connection	RJ45
Wireless Communication	WIFI (802.11g/n)
Applicable Voltage	Single Phase / Three-Phase
Storage (Optional)	USB Local Storage
Power Control (Optional)	Automatic Control of Power Output

### Capacity

Number of Devices Connected	Up to 40 Units of PV Modules on Each Phase
-----------------------------	--

### AC Supply/Consumption

AC Supply	108-264VAC; 47.5Hz-62.0Hz
Power Consumption	<3W

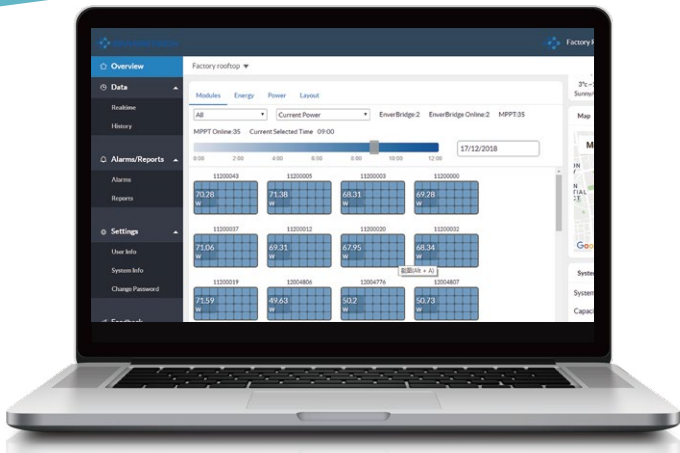
### Mechanical Data

Dimensions (W*H*D)	172mm*100mm*45.5mm
Cooling	Natural Convection- No Fans
Ambient Temperature Range	-40°C to +65°C
Ingress Protection (IP)	IP 40

### Compliance & Warranty

Compliance	CE
Warranty	5 Years

# SMART MONITORING SYSTEM



## EnverPortal



Comprehensive data display and analysis for the whole system and each panel.



Both realtime and daily, monthly, yearly data available.



Problem detection at module level for easy maintenance.



## EnverView



A fast convenient monitoring and management of your system's performance right in your palm.

