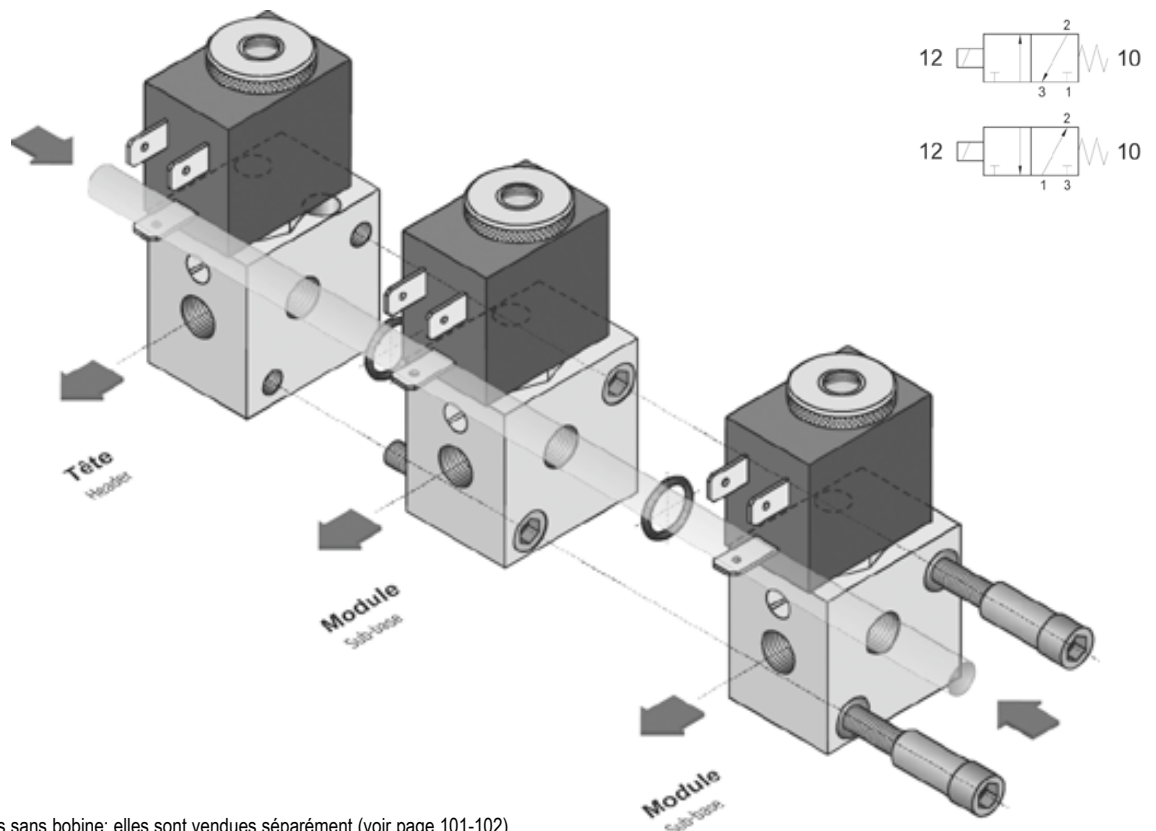


Electrovannes juxtaposables

solenoid valves on multiple sub-bases

- Sorties taraudées G1/8" ou avec raccord instantané pour tube ø4
User ports: G1/8" or push-in fittings for ø4 tube
- Les embases d' "entrée" peuvent être utilisées seules
Headers can be used also as bases for standing-alone solenoid valves
- Avec ou sans commande manuelle
With or without detented manual override
- Electrovanne 3/2 en version NF ou NO
Normally closed and normally open 3/2 version
- Pour bobines 22 mm (sur demande pour bobines 30 mm)
For 22 mm coils (on request for 30 mm coils)



Les produits suivants sont vendus sans bobine; elles sont vendues séparément (voir page 101-102).
The following listed products are sold without coils, which are bought separately (refer to page 101-102).

Température de travail <i>Temperature range</i>	max +60°C
Pression de travail <i>Working pressure</i>	max 10 bar max 1 MPa
Diamètre nominal <i>Nominal orifice</i>	1.1 mm
Fluide <i>Fluid</i>	Air filtré 50µ avec ou sans lubrification <i>50µ filtered, lubricated or non lubricated air</i>

Les embases et les têtes sont vendues avec toutes les fixations nécessaires à leur assemblage.
Sub-bases and headers are sold with all necessary pieces for installation.

Electrovannes juxtaposables

solenoid valves on multiple sub-bases

module
sub-base

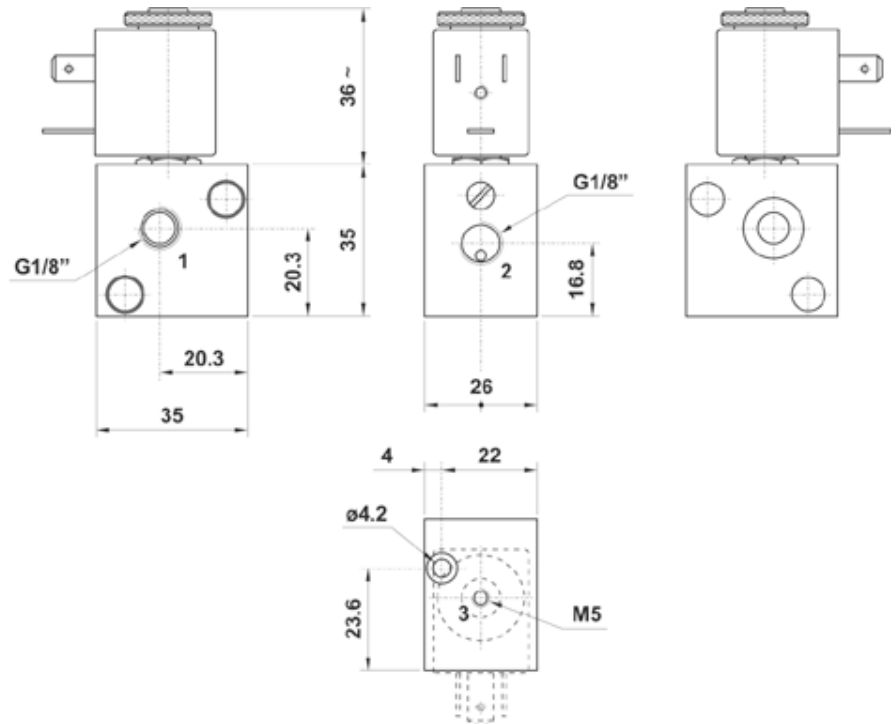
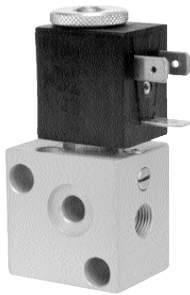
avec commande manuelle bistable
with detented manual override

G1/8"

CODE DE COMMANDE - ORDER CODE

NF [NC]

00.094.3



entrée
header

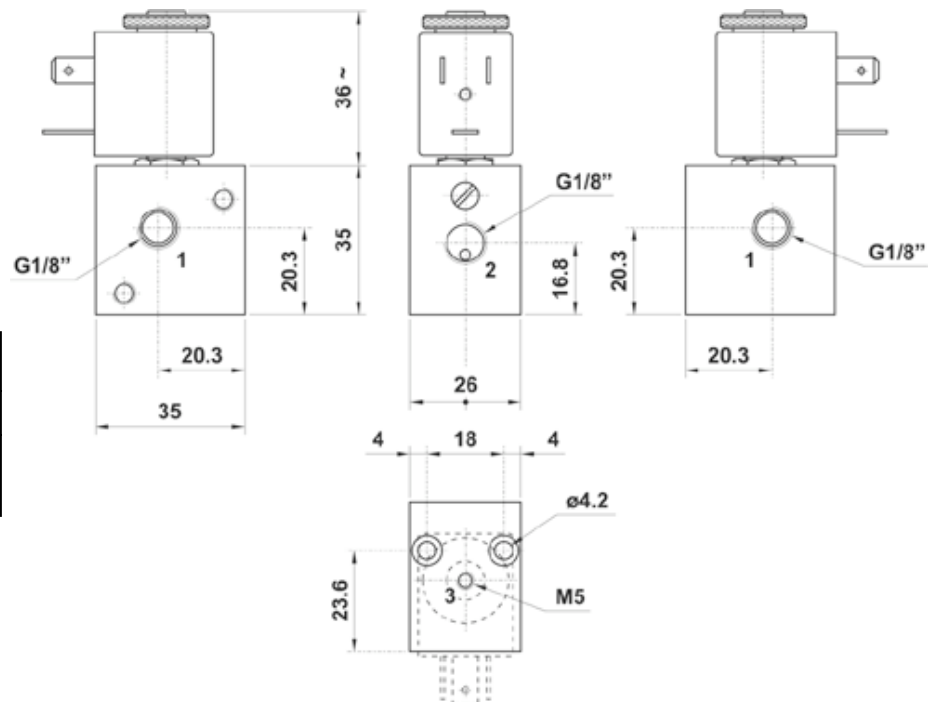
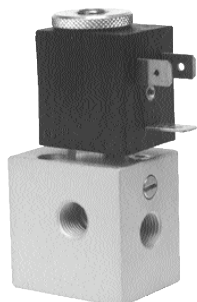
avec commande manuelle bistable
with detented manual override

G1/8"

CODE DE COMMANDE - ORDER CODE

NF [NC]

00.095.3



Electrovannes juxtaposables

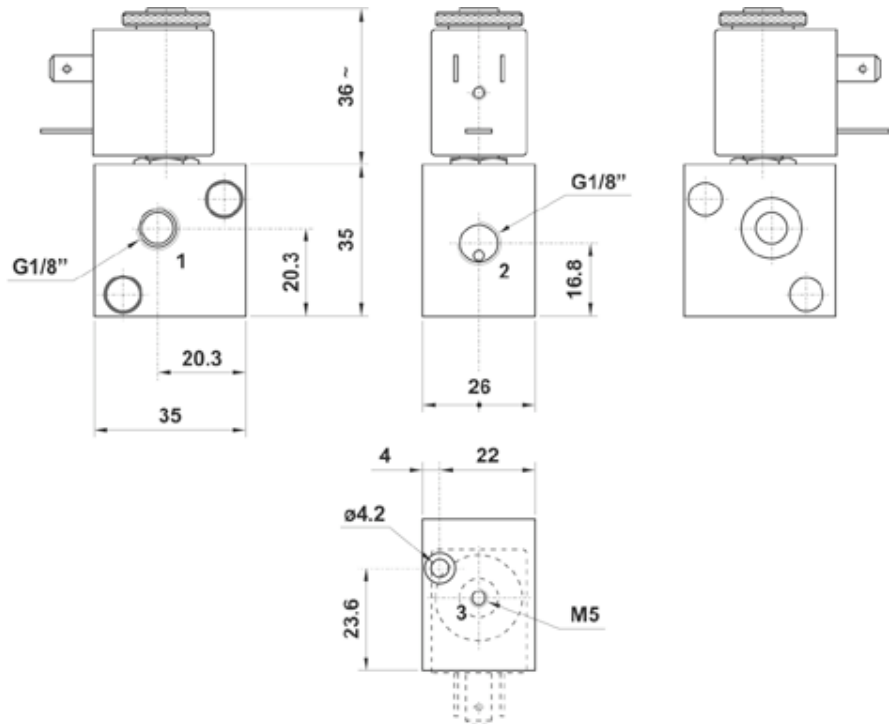
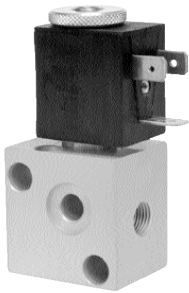
solenoid valves on multiple sub-bases

**module
sub-base**

sans commande manuelle
without manual override

G1/8"

CODE DE COMMANDE - ORDER CODES	
NF [NC]	NO [NO]
00.096.3	00.130.3

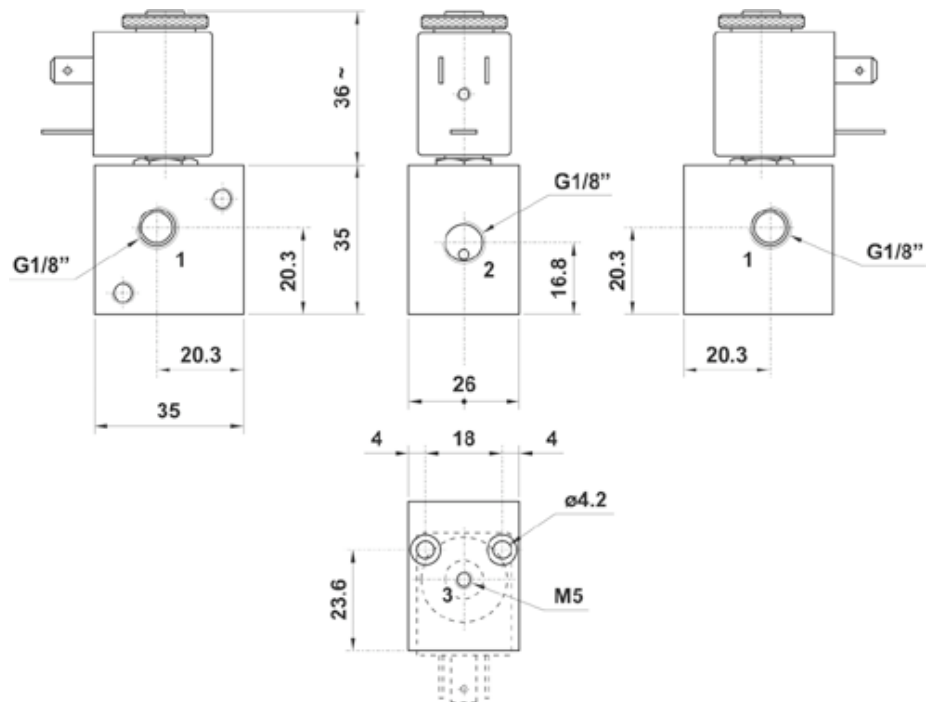
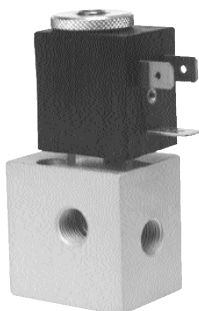


**entrée
header**

sans commande manuelle
without manual override

G1/8"

CODE DE COMMANDE - ORDER CODES	
NF [NC]	NO [NO]
00.097.3	00.131.3



Electrovannes juxtaposables

solenoid valves on multiple sub-bases

**module
sub-base**

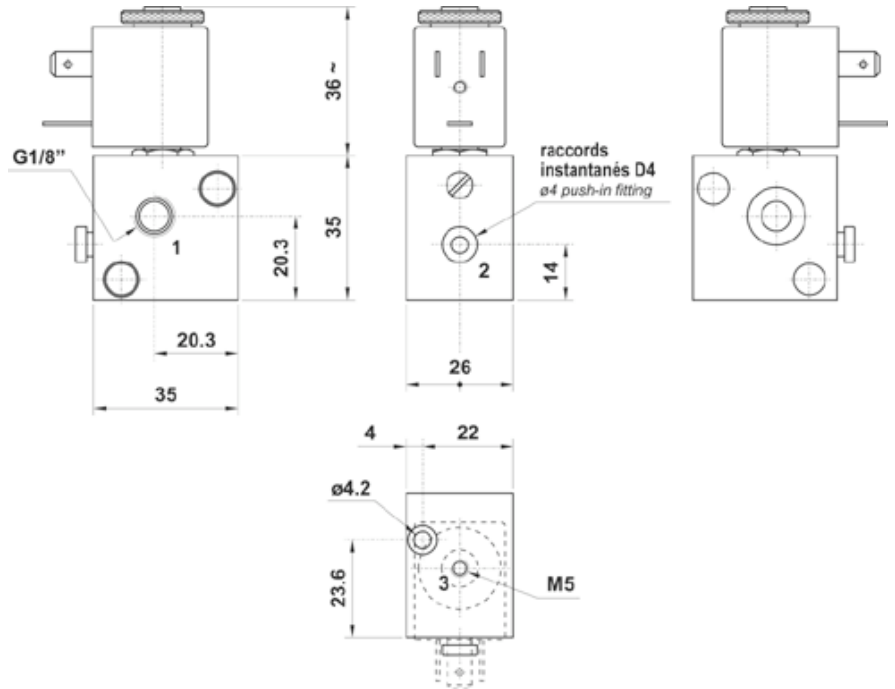
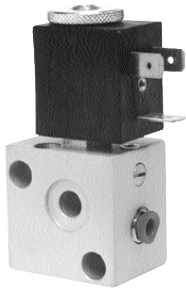
avec commande manuelle bistable
with detented manual override

Ø4

CODE DE COMMANDE - ORDER CODE

NF [NC]

00.098.3



**entrée
header**

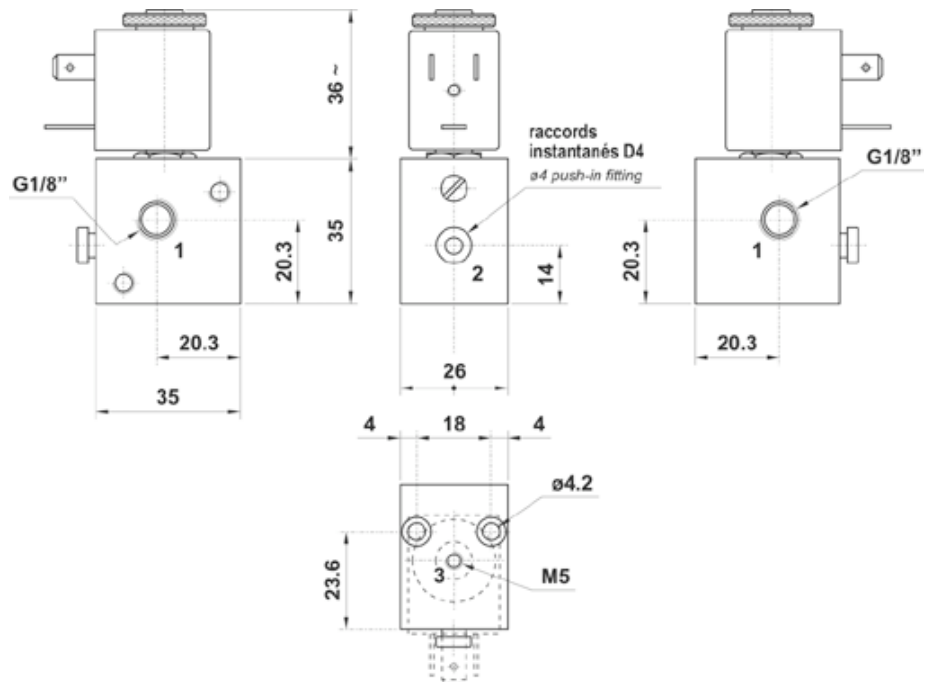
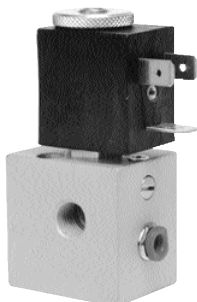
avec commande manuelle bistable
with detented manual override

Ø4

CODE DE COMMANDE - ORDER CODE

NC [NC]

00.099.3



Electrovannes juxtaposables

solenoid valves on multiple sub-bases

module
sub-base

sans commande manuelle
without manual override

Ø4

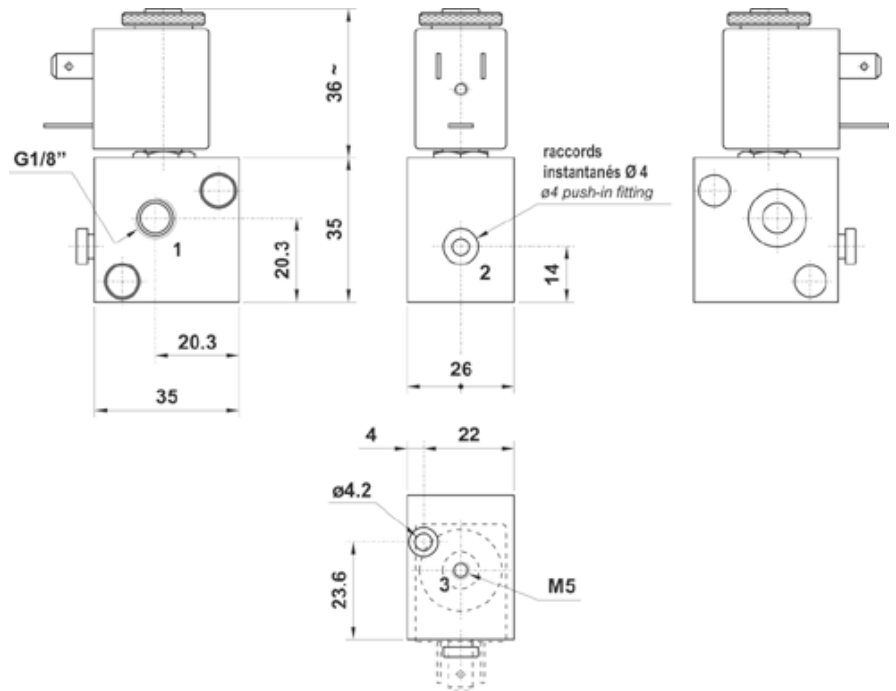
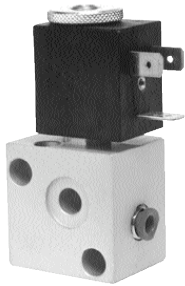
CODE DE COMMANDE - ORDER CODES

NF [NC]

NO [NO]

00.100.3

00.134.3



entrée
header

sans commande manuelle
without manual override

Ø4

CODE DE COMMANDE - ORDER CODES

NF [NC]

NO [NO]

00.101.3

00.135.3

