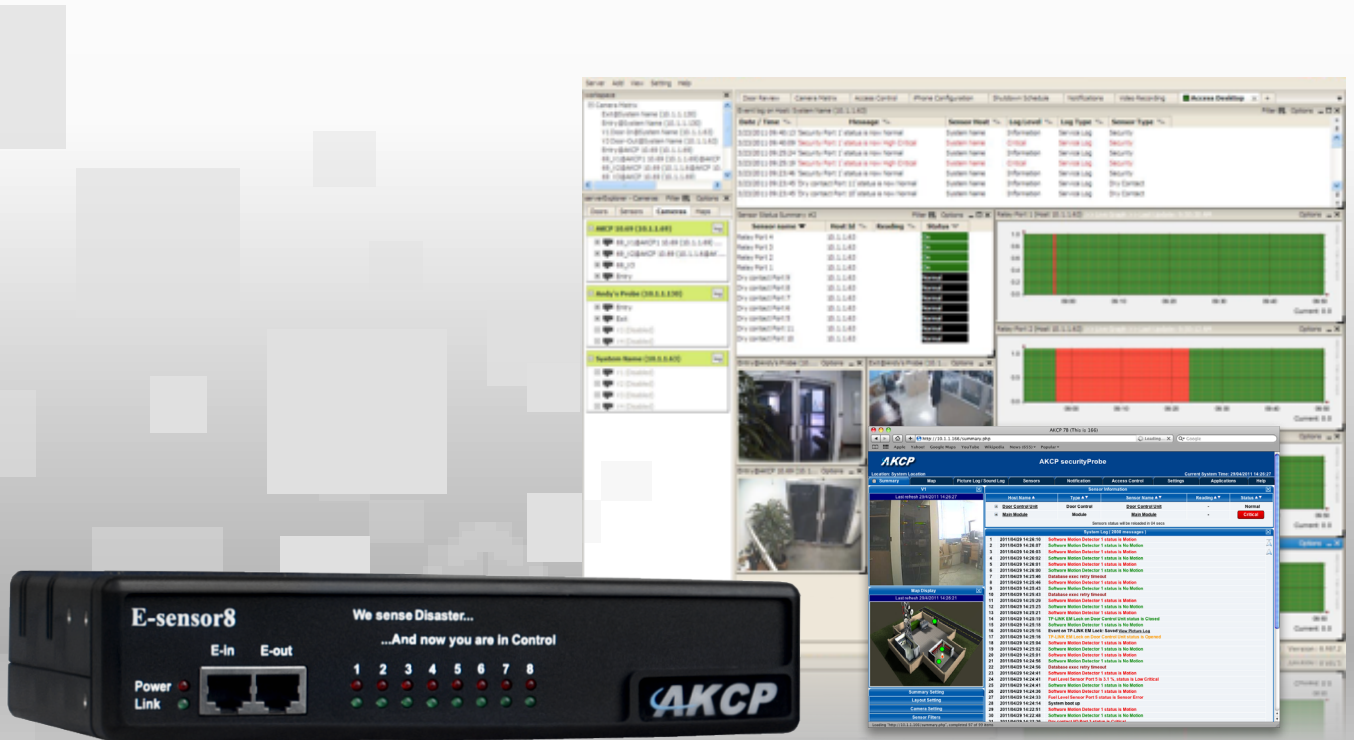


# E-sensor8



## E-sensor8

The E-sensor8 is an expansion module that has 8 RJ-45 intelligent sensor ports and is connected to any of the 4 RJ-45 expansion ports located on the front panel of the securityProbe5E base units. They are connected using standard CAT5 LAN cable.

The E-sensor8 may also be daisychained using the E-Out/E-In ports on other expansion boards.

## Introducing the E-sensor8

Any sensor within AKCP's complete line of intelligent sensors can be connected to the intelligent sensor ports which are located on the rear of the unit. 16 LED's on the front provide each sensors visual condition, 8x red for status and 8x green for online.

The expansion boards can be daisy chained together using the units input, or E-in and output, E-out port. These also are

RJ-45 ports and use standard CAT5 cable. These E-Boards can be extended from the securityProbe 5Es base unit or from each other up to 300 meters, or roughly 1000 feet.



*E-sensor8 Expansion Board*

*The 300 meter maximum run length is not the total run length of all of the E-Boards combined. This is each E-Boards maximum run length from either the base unit, or from each other.*

## OID's for checking the Expansion Boards and securityProbe5E:

- The OID will start with .1.3.6.1.4.1.3854.2 for checking the sensors on the expansion modules including the E-sensor8.
- This SNMPwalk command .1.3.6.1.4.1.3854.2.3.1.1 can be used for checking all of the sensors on the securityProbe 5E.
- This SNMPwalk command .1.3.6.1.4.1.3854.2.2.1.1 can be used for returning the status of the expansion modules.

## Industry Certifications & Network Management Systems



*AKCP offers NMS Integration for leading network management systems such as:*

- AdRem NetCrunch
- IBM Tivoli
- SiteScope
- Quest Software – Big Brother
- Loriot Pro
- Somis WebNM and Denika
- Castle Rock
- Logalot
- WhatsUp Gold
- HP OpenView
- MRTG
- Computer Associates Unicenter TNG

## Support and Warranty



- **1 year Limited Warranty, Optional 2 Year Warranty.**
- **Unlimited Lifetime Support.**
- **Free Firmware Updates.**
- **Full, Easy to Follow Documentation.**

## Technical Specifications

<p><b>Dimension</b></p> <p>Size : 8.5" x 5.43" x 1.80" Weight : 2.4 pounds</p>	<p><b>Expandable Ports</b></p> <p>Daisy chain multiple E-modules including E-sensor8 and E-opto16 Uses standard RJ-45 connections and CAT5 LAN cable Data transfer rate: 115.2 KBPS Maximum extension cable run length: 300 meters (1000 feet) 1 RJ-45 expansion module input (E-in) 1 RJ-45 expansion module output (E-out) Compatible with AKCPs complete line of intelligent sensors Connect up to 600 AKCP intelligent sensors to one securityProbe 5E</p>	<p><b>Mounting</b></p> <p>Rack mount brackets included Compatible with AKCP DIN and Tray rack mount kits</p>
<p><b>Power Requirements</b></p> <p>Voltage 7.0 - 9 VDC, 3 Amp</p>	<p><b>Status Indication</b></p> <p>LED indication for Power LED for Network Connectivity LED for sensor online and threshold status Disconnect alert from securityProbe 5E base unit notifications.</p>	<p><b>Output</b></p> <p>Configurable output signals (0VDC/5VDC) on any of the 8 RJ-45 sensor ports 1 RJ-45 expansion module output (E-out)</p>
<p><b>Power Consumption</b></p> <p>Typical 6.150 Watt, 0.82A</p>	<p><b>Operating Environment</b></p> <p>Temp : Min. -35° C - Max. +55° C Humidity : Min. 20% - Max. 80% (Non-Condensing)</p>	<p><b>Components</b></p> <p>Manufactured using highly integrated, low power surface mount technology to ensure long term reliability.</p>
<p><b>Inputs</b></p> <p>8x RJ-45 ports for connecting AKCP sensors 1x RJ-45 expansion module input (E-in) 1 RJ-45 expansion module input</p>	<p><b>Power Consumption</b></p> <p>Typical 6.15 Watt, 0.82Amp</p>	