

# MULTICETA<sup>®</sup>

EN 12810-1  
EN 12811-1



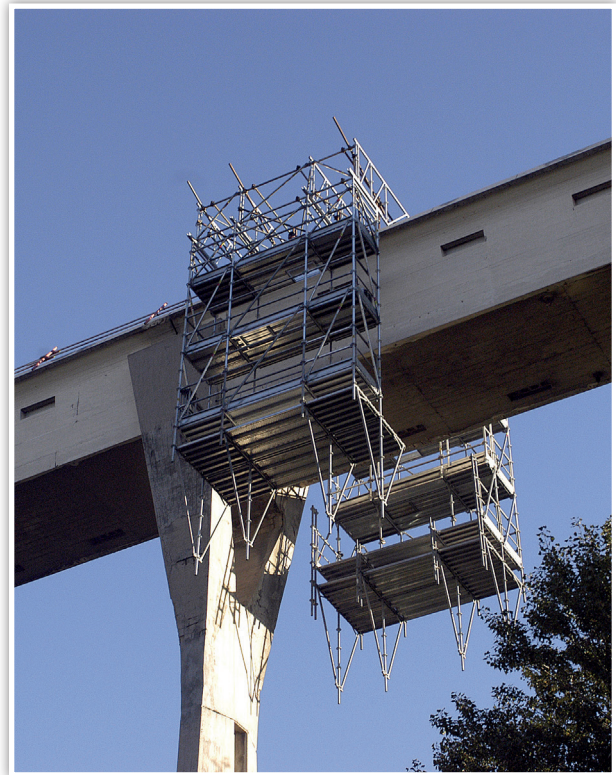
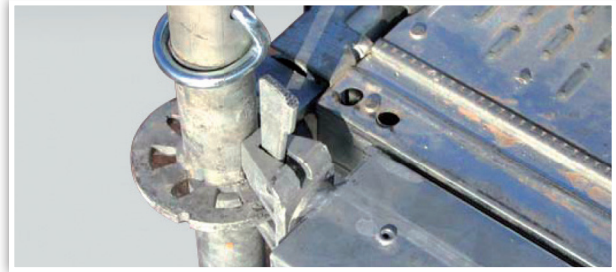
Head Office  
47/49, Via Grumello  
24127 Bergamo  
Italy

[www.ceta.it](http://www.ceta.it)

# MULTICETA®



www.ceta.it



## MULTIDIRECTIONAL SYSTEM

<b>MAINTENANCE</b>	width 77 cm
<b>Modularity</b>	44 - 50 - 77 - 100 - 110 - 150 - 180 - 200 - 250 - 300
<b>CONSTRUCTION</b>	width 110 cm
<b>Modularity</b>	44 - 50 - 77 - 100 - 110 - 150 - 180 - 200 - 250

Certification body



**ICECON CERT** ORGANISME DE CERTIFICATION  
CERTIFICATION BODY

CONFORME A LA NORME ISO 9001  
REVISIÓ 2015

OR ISO 9001:2015-2015  
CERTIFICAT DE ACREDITARE  
2016-08

**CERTIFICATE OF CONFORMITY**  
0327-P.R2/01.07.2016

This certificate of conformity is certify that products

**STEEL FAÇADE SCAFFOLDS**

MULTICETA - 4N-SW 09110-H1-A-LA	MULTICETA - 4D-SW 09180-H1-A-LA
MULTICETA - 4D-SW 09110-H1-A-LA	MULTICETA - 4N-SW 09200-H1-A-LA
MULTICETA - 4N-SW 09160-H1-A-LA	MULTICETA - 4D-SW 09200-H1-A-LA
MULTICETA - 4D-SW 09180-H1-A-LA	MULTICETA - 4N-SW 09250-H1-A-LA
MULTICETA - 4N-SW 09180-H1-A-LA	MULTICETA - 4D-SW 09250-H1-A-LA

Placed on the market and manufactured in the factory by **CETA SpA**,  
Head office and plant address: 24127 BERGAMO, via GRUMELLO, 4749, ITALY,  
Phone: +39 035 454 85 11, fax: +39 035 261 622

have been subjected by the manufacturer to periodical tests and production process control including all measures necessary for fulfillment the maintenance and the requirements specified in reference documents.

ICECON CERT has performed periodical inspection of the production process and quality system applied, has assessed periodical tests reports and will perform the continuous surveillance of the production process and the quality system.

This certificate attests that all requirements related to the factory production recertification, as described in the reference standards

EN 12810-1:2003, EN 12811-1:2003

have been accomplished.

Applicable conformity scheme: 5, according to EN ISO/CEI 17067:2013.

This certificate has been issued on 1<sup>st</sup> July 2016 and shall be valid until 2<sup>nd</sup> July 2019, as long as the requirements specified in the reference standards, as well as the factory production conditions and the factory production control will not be subject to significant modifications.

Uses: For inspection purposes and in works that do not imply the storage of construction materials and elements, except for those to be used immediately (paintings, stone cleaning, grouting, plastering).

Executive Manager  
**Eng. Gergely ANTÓCHE**

Buzsácsi, 1<sup>st</sup> July 2016

ICECON CERT s.r.l. viale dell'Industria, 2 - 37042 Montebelluna (TV) - Italy - Tel. +39 0423 651111 - Fax +39 0423 651112  
ICECON CERT is a member of the ICECON GROUP, a leading international group of certification bodies. For more information, visit www.iceconcert.com

