



# HKS XtraTilt

## Up to 2 x 90° tilting

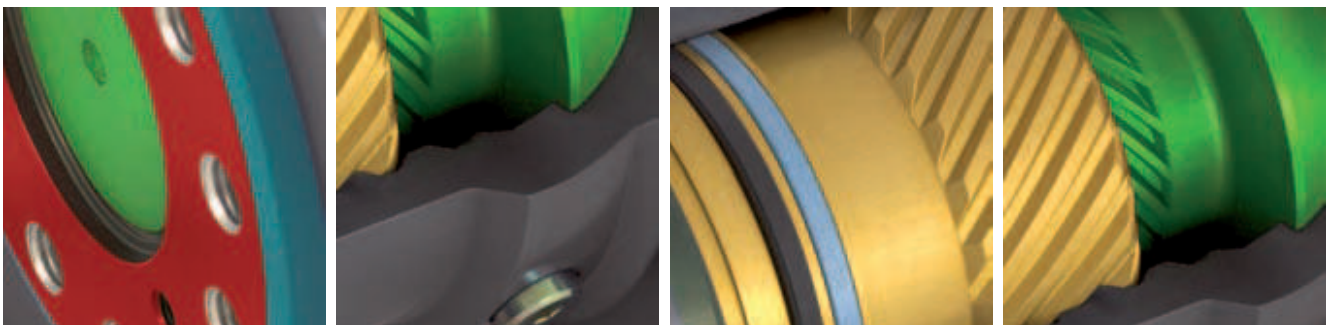
One HKS XtraTilt for all attachments.

Providing an additional movement axis for more **versatility** and **flexibility**.

Many years of experience and innovation have made the **HKS XtraTilt** more robust, reliable and durable. The special deflectors on both sides of the **HKS XtraTilt** prevent dirt from entering the housing as soon as it leaves the factory, thus considerably reducing maintenance costs.

### Details

- ▶ Standard tilt angles: 100°/140°/180°
- ▶ Holding torque of up to 165,000 Nm
- ▶ Operating pressure of up to 210 bar
- ▶ **38 designs** with 15 sizes for carrier device with a weight of up to 60 t
- ▶ Other tilt angles available upon request



# Product advantages



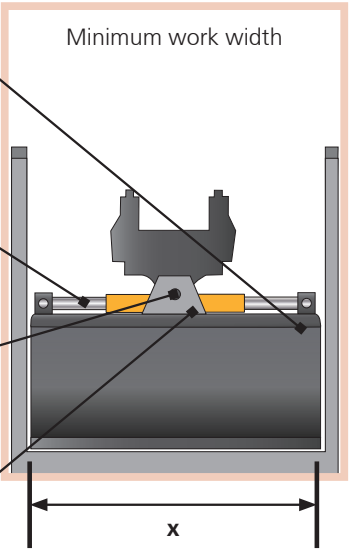
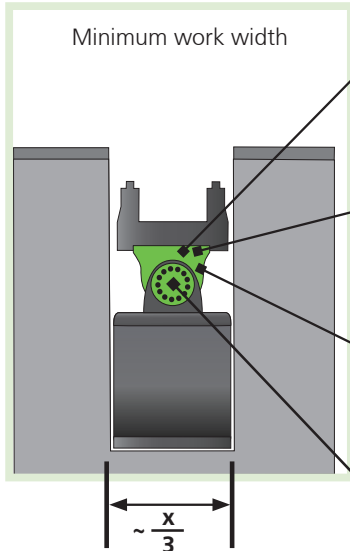
- + **High availability:** no lubrication or readjustment needed
- + **Compatible** with all quick couplers and carrier devices
- + **Greater reach** as narrower attachments can be used to significantly reduce the operating width
- + Any start-up **position is accurately** retained thanks to its excellent holding torques and precision manufacturing
- + Actuator centring on both sides for **efficient power intake** and **transmission**
- + Special manufacturing, heating and hardening processes give the robust welded housings excellent dimensional accuracy and **protection from wear and rust**

For us, innovation is not just about designing our actuators to make them stronger and more powerful, but also to create advancements in terms of environmental efficiency. Our actuators can also be operated with biological operating media if requested. This is possible by individually customising modified sealing systems.

## In fact:

With the **HKS XtraTilt** series, you are purchasing a durable quality product made in Germany incorporating over a decade of experience in construction and applications.

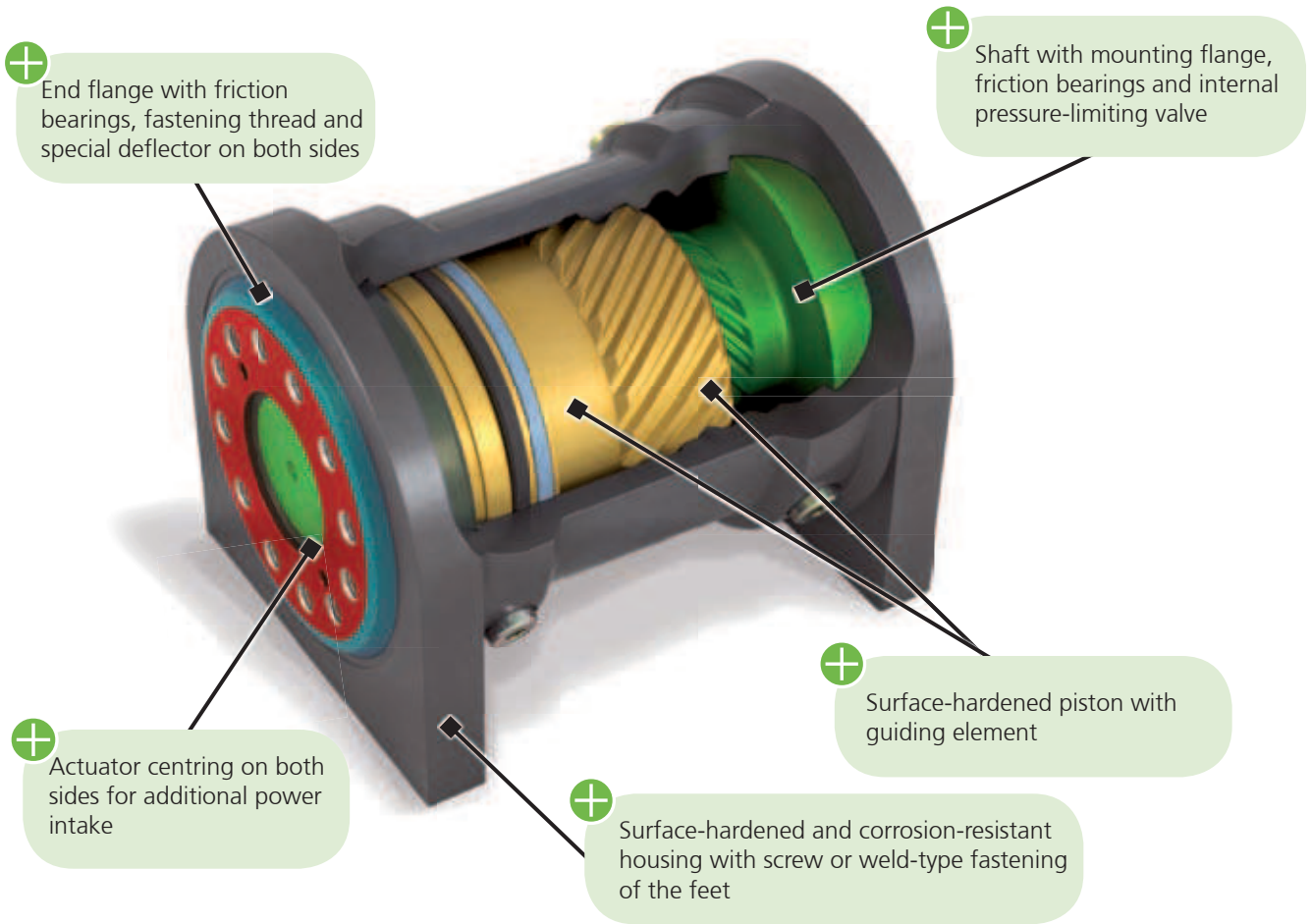
# Comparison with conventional products

	<b>Bucket with linear cylinder</b>		<b>HKS XtraTilt</b>
<p>Only suitable for ditch cleaning buckets</p> <p>Damage to the cylinders from soil, stones and dirt</p> <p>Continual relubrication / greasing of the cylinder bearing required</p> <p>Tilt head with bearing positions that require lubrication, time-consuming assembly</p>	 <p>Minimum work width</p> <p style="text-align: center;"><math>x</math></p>	<p>Solid, compact, robust, safe and powerful</p> <p>A larger tilt angle to achieve greater reach</p> <p>Long service intervals save maintenance costs</p> <p>Strong, large-dimension bearings</p>	 <p>Minimum work width</p> <p style="text-align: center;"><math>\sim \frac{x}{3}</math></p>
<p>Simplified representation</p>			

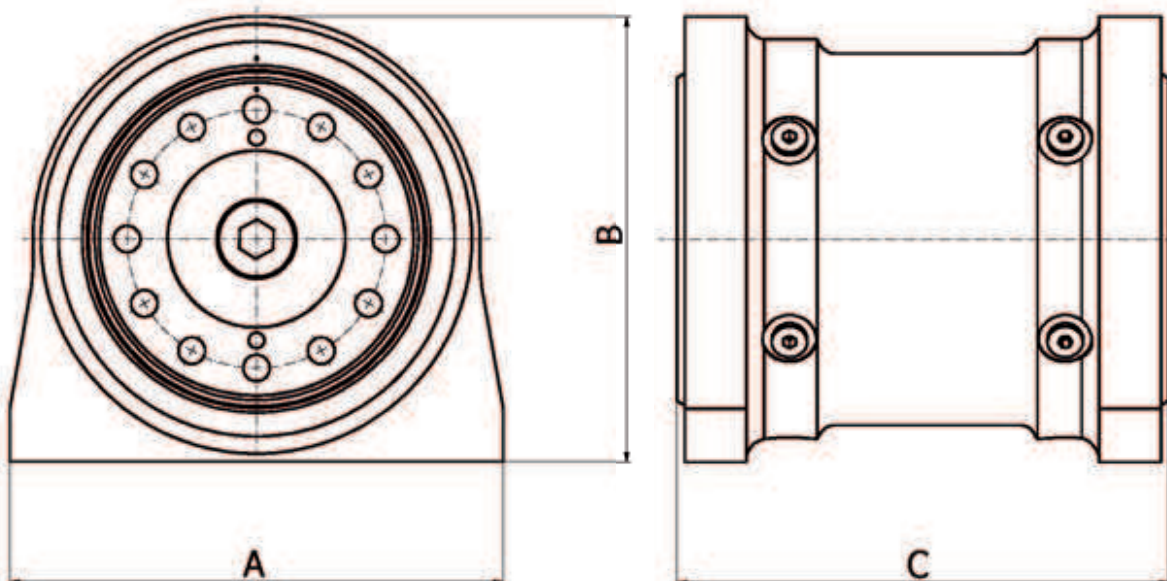


# HKS XtraTilt components – made for continuous use

**Just the right device for harsh everyday conditions:** the compact 4-part construction from high-quality materials and its precision manufacturing make the **HKS XtraTilt** the most robust rotary actuator in its class.



## Technical illustration



# Technical data and dimensions

Excavator weight [t]	XtraTilt type	Tilt angle	Holding torque [Nm]	Working pressure [bar]	Displacement [dm <sup>3</sup> ]	Weight [kg]	Dimensions		
							A [mm]	B [mm]	C [mm]
< 1.8	BVC 100	100°	2,480	190	0.18	19	150	152	197
		140°			0.25	21			221
		180°			0.323	22			245
1.8–3.8	BVC 115	100°	7,300	190	0.284	42	220	187	264
		140°			0.399	47			306
		180°			0.513	52			344
3–5.5	BVC 125	100°	7,800	190	0.385	51	220	212	267
		140°			0.538	57			305
		180°			0.693	62			345
4–6.8	BVC 130	100°	10,000	210	0.58	59	270	227	267
		140°			0.813	64			305
		180°			1.045	70			345
5–7.5	BVC 140	100°	10,900	190	0.696	85	300	250	291
		140°			0.974	94			337
		180°			1.253	103			383
7–9	BVC 160	100°	17,500	210	1.147	87	300	266	291
		140°			1.606	95			337
		180°			2.064	104			383
8.5–11	BVC 180	100°	19,500	190	1.421	121	320	290	319
		140°			1.989	135			371
		180°			2.557	149			423
10–13	BVC 225	100°	36,700	190	1.892	158	382	327	350
		140°			2.649	175			404
		180°			3.226	200			455
12–16	BVC 240	100°	40,000	190	2.34	167	382	328	354
		140°			3.281	187			412
15–23	BVC 250	100°	47,300	190	2.519	200	405	353	368
		140°			3.527	224			430
22–26	BVC 260	100°	53,000	190	3.291	266	450	380	420
		140°			4.61	301			482
25–29	BVC 270	100°	63,000	190	3.967	322	490	400	460
		140°			5.554	358			534
28–38	BVC 300	100°	90,000	190	5.742	554	570	478	540
		140°			8.039	605			612
37–50	BVC 350	100°	100,000	190	7.969	666	608	515	565
		140°			11.187	727			641
48–60	BVC 400	100°	140,000	190	12.5	1,240	760	620	675
		140°			17.5	1,426			800

Further dimensions available on request ▶ [sales@hks-partner.com](mailto:sales@hks-partner.com)

All weight data **exclude** quick coupler and dipperstick connection.

