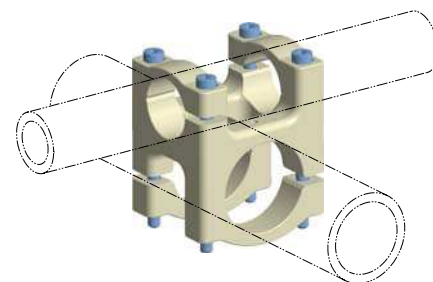


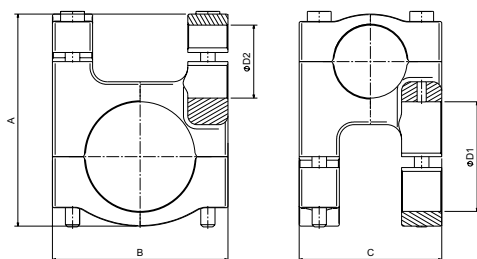
Brides traversantes D1-D2 – B



Page 19

02 Brides d'assemblage

02 01



BRTR D1 D2 – B

Référence	A (mm)	B (mm)	C (mm)	D1 (mm)	D2 (mm)	Masse (Kg)
BRTR6060-B	138	96	96	60	60	0,736
BRTR6040-B	117,5	96	78	60	40	0,625
BRTR6025-B	106	96	61	60	25	0,500
BRTR4040-B	98	78	78	40	40	0,504
BRTR4025-B	88	78	61	40	25	0,407
BRTR2525-B	73	59	59	25	25	0,309