



Caméra HHC X8 PRO

Caméra rapide Mega Speed

Brochure produit

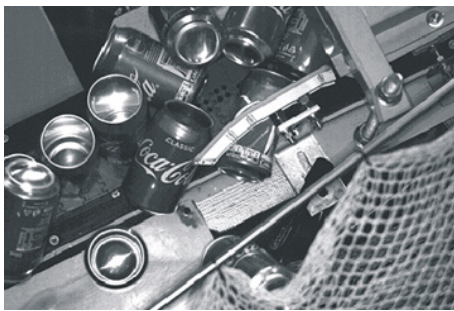


A portable hand-held high-speed camera for lab or field use. No pc, no lights, no cables required!

Resolution and FPS

Min FPS: 35		Approx.Record Time Sec	
Width	Height	Max FPS	16 GB RAM
1280	800	4,020	4.2
1280	720	4,460	4.2
1280	640	5,010	4.2
1280	480	6,660	4.2
1280	320	9,910	4.2
1280	256	12,300	4.2
1280	200	15,600	4.3
1280	156	19,800	4.3
1280	120	25,400	4.4
1280	64	45,100	4.6
1280	32	81,300	5.0
1280	16	135,500	5.8

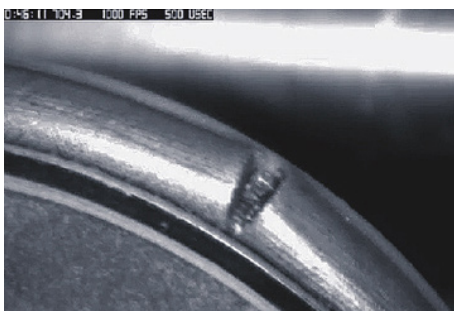
Sample Applications



Food Processing



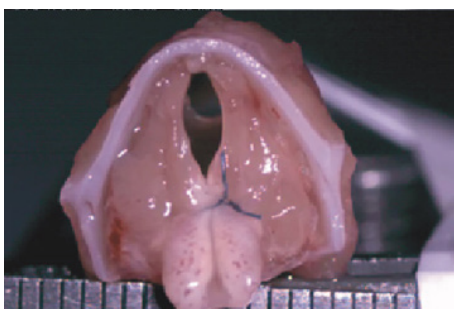
Pharmaceuticals



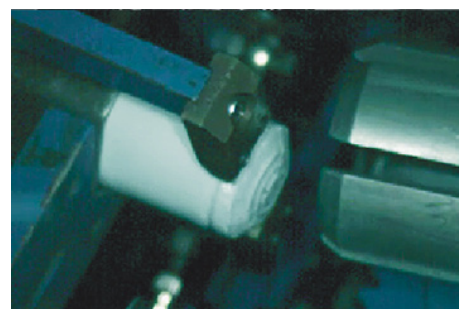
Trouble-Shooting



Surface Mining



Biology Study



Beverage Packaging

Rugged, impact resistant, shock protected, high strength injection molded case

Convenient neck strap mounts for added comfort while recording

Industry standard "C" mount or optional "F" mount for easy lens selection

Ergonomic over-molded rubber hand grips prevent accidentally dropping your camera

Re-moveable solid state drive for years of worry free performance and convenient memory upgrades

Built in high power LED work lights. No need to drag around or plug in extra work lights



Several detachable and on-board file storage options like SDHC, USB or hot-swap solid state drives

Large 6" screen for a clear view of your recordings

Sync in/ sync out, triggers, frame marker ADC & IRIG-B input options available

HDMI & USB mouse ports for remote viewing the camera in confined spaces

Intelligent charging module charges the battery while recording

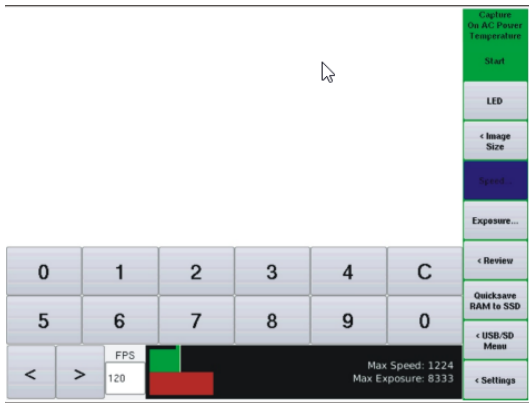
Gigabit LAN control for when you want to control the camera from your PC

Over-molded rubber screen bumper protects the high resolution touch screen

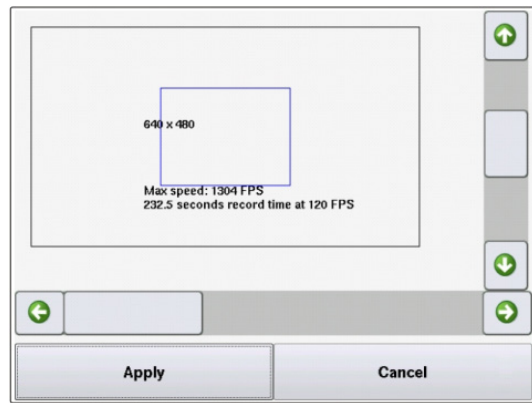
1/4 x 20 TPI tri-pod mounts for secure camera mounting



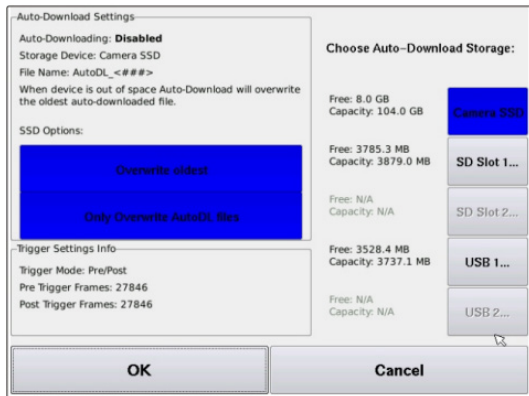
Recording rates from 30 fps to 512,000 fps
All Inclusive 3 year Warranty



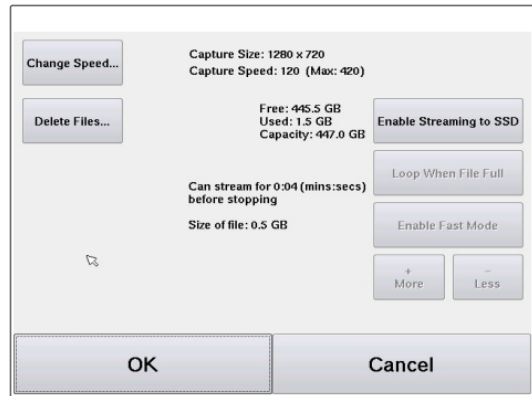
Easy to follow menu for all camera settings



Select any image size to match your application



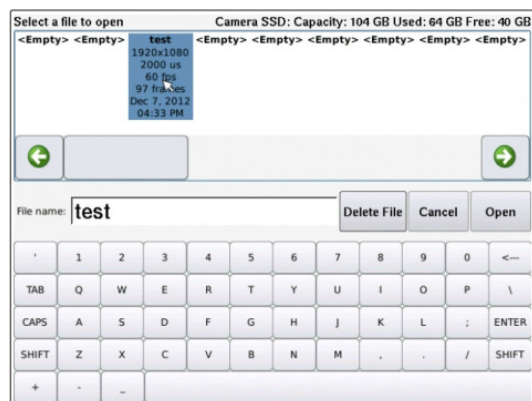
Auto-download options to continuously save event trigger video from your plc



Save right to the cameras ssd for extended recording times

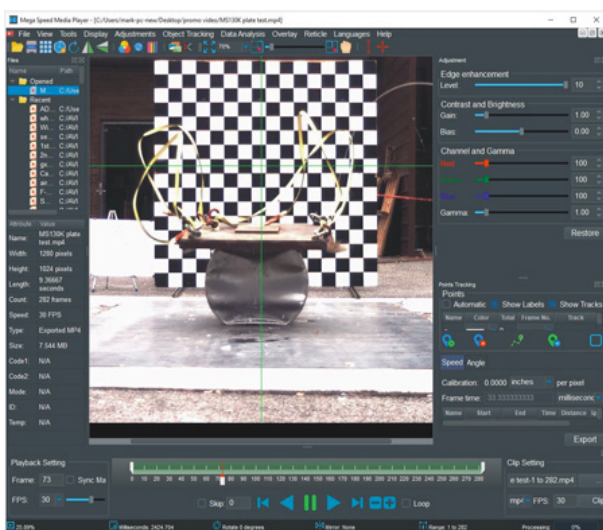
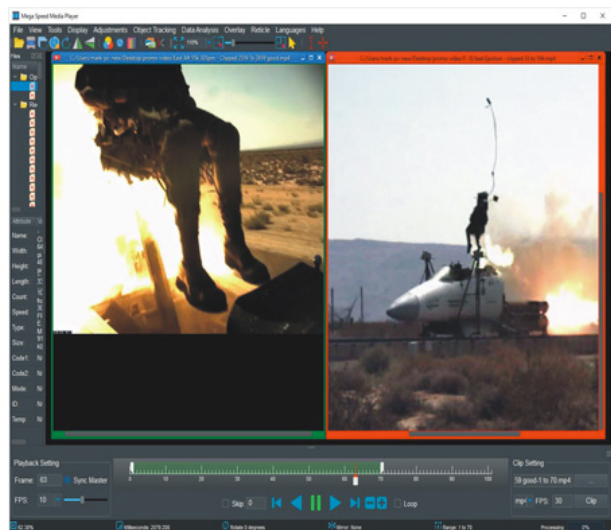
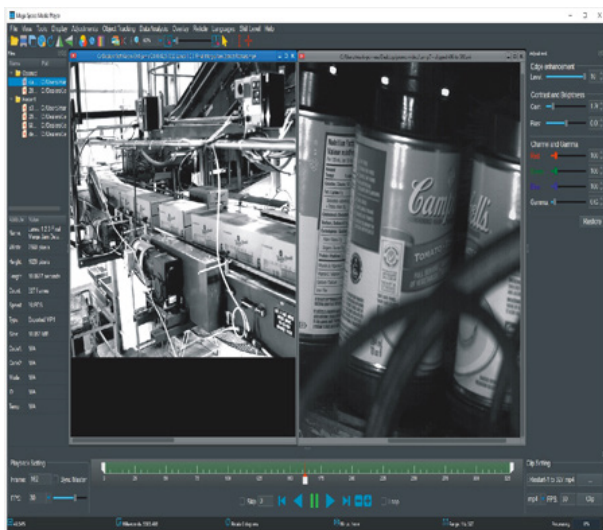
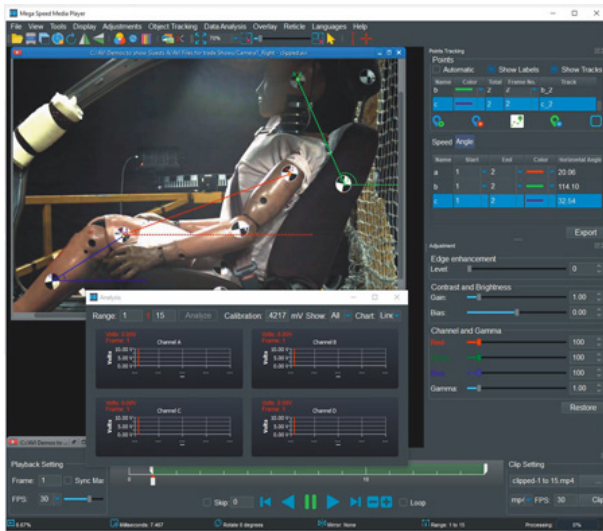


Multiple storage & file saving options



Easy to manage file location menu

Software

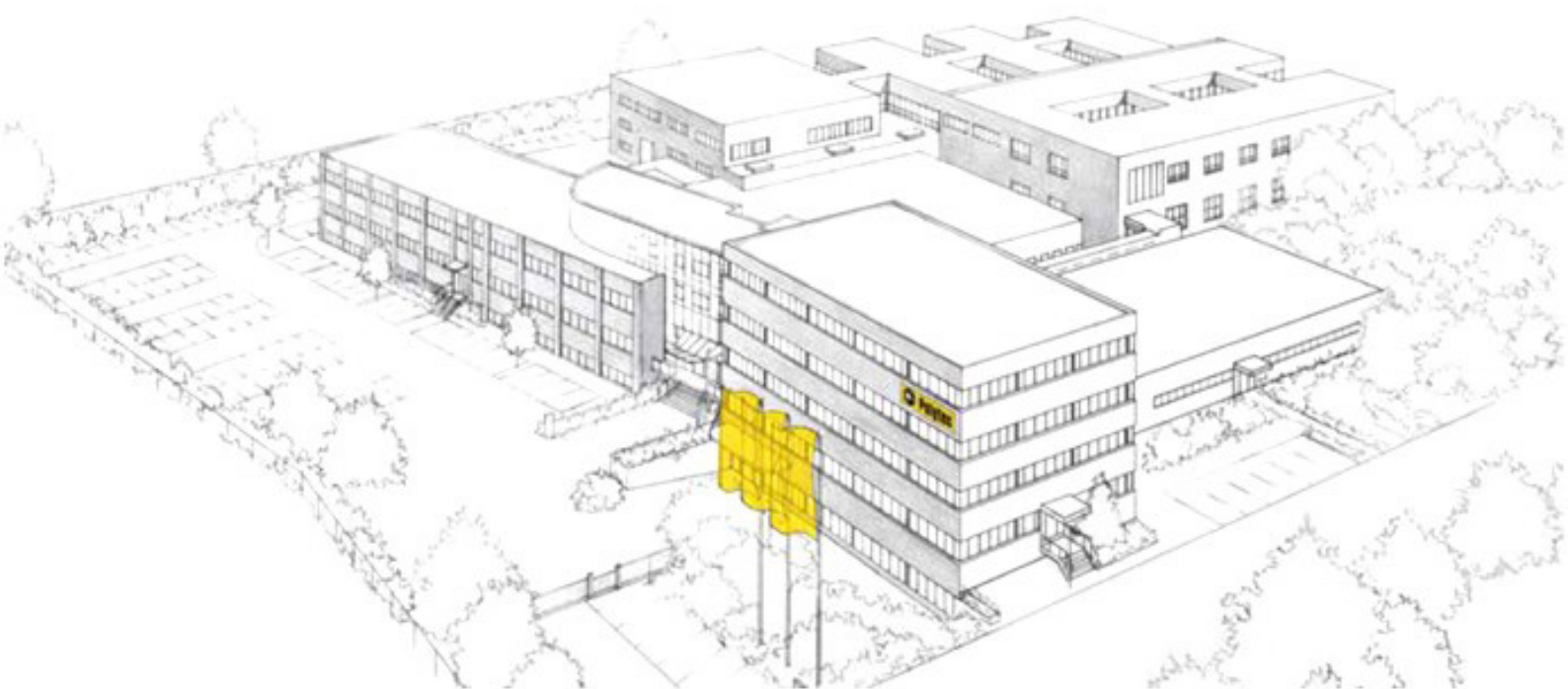


Making sense of your high speed image data. The included mega speed media player!

New tools to measure, synchronize, batch process, clip and compress. the fastest video analysing work-flow available. Helping you make sense of all your high speed image data. \$1995.00 value free with every mega speed camera.

Technical data

Sensor Type	4/3" color or monochrome 1280 x 800 format CMOS
Work Lights	Built in high power LED work lights
Maximum Resolution	1280 x 800
Speed	4000 fps at maximum resolution 512,000 fps at minimum resolution
Pixel Size	14 x 14 um pixels
Shutter Speed	Global electric shutter 2 us to 40 milli-seconds in precise 1-2 us steps for no high speed blur
LCD Screen	Rear high resolution LCD screen. Full touch screen operation and control
ISO Equivalent	12,000
A-D Converter	10 bit pixel bit depth
Trigger In	3 to 48 VDC TTL centre pin positive, manual, external, countdown timer or switch closure
Strobe/Sync Out	3.3 VDC TTL via multi pin connector center pin positive, active high
Input Voltage	14 VDC from wall adapter when required
IRIG B	Optional IRIG B time code ready via multi pin connector for time stamping on recorded images
Data Acquisition	Data acquisition connection of rear of camera to accept outside signal source
File Saving	User can save images in AVI, JPEG, BMP, TIFF, RAW and DNG file formats
Streaming Mode	Stream in long record mode up to 2000 fps to the internal removable SATA SSD
Video Out Formats	HDMI interface for TV / monitor and one optional 3GSDI out port
Camera Memory	16 GB internal high speed internal image buffer memory
Removable Storage	1 SSD, 2 USB ports & 2 micro SD ports
Tripod Support	Camera has integrated ¼ x 20 tri-pod thread
PC Requirements	2GHz, 8 GB RAM. 1 USB and 1 Gig E connection. (Only needed if you connect camera to a PC)
PC Software	Camera control software for image transfer, object tracking, image analysis, video editing
PC Interface	Gigabit Ethernet for full camera control and downloading files from the camera's RAM & SSD
WiFi / LAN	Camera can connect to LAN network and camera has optional WiFi connectivity
Lens Mount	Standard "C" mount. "F" mounts available
Camera Size	3" x 9" x 5"
Camera Weight	3.5 lbs with battery
Camera Body	Self contained, hand held with advanced light weight rugged Space Age ABS body
Camera Battery	Lithium-ion re-chargeable / removable battery with power saving features
Temperature	0°C to 45°C Operational range. -40°C to +50°C storage range



Shapping the future since 1967

Hightech for research and industry
Pioneers. Innovators. Perfectionnists.



Polytec France

Technosud II Bâtiment A, 99 rue Pierre Semard 92320 CHATILLON
Tel. +33 1 49 65 69 00, Fax. +33 1 57 19 59 60, info@polytec.fr

Contactez-nous pour un essai ou pour un devis

www.polytec.fr
www.polytecstore.fr

