



DQG-Series Inclinometer

Dual axis inclinometer
Measurement range $\pm 25^\circ$
Voltage output signal



The **DQG-Series** is a small inclinometer based on dual axis tilt sensor for horizontal mounting, which works based on the conductivity principle. This microprocessor controls the inclinometer with a linearized and temperature compensated angle output signal. The unit has metal housing and exhibits an 8...30VDC power supply.

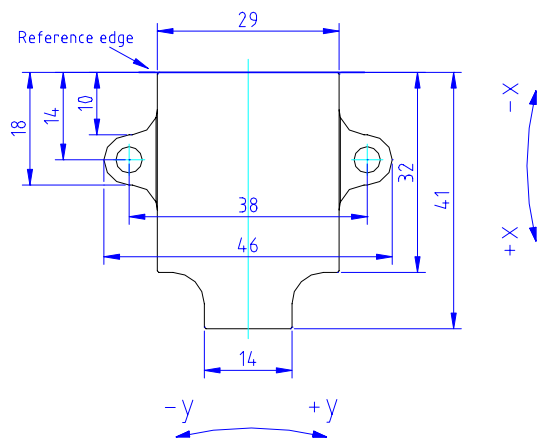
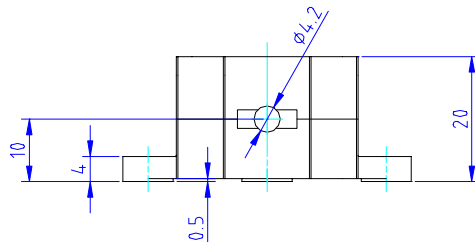
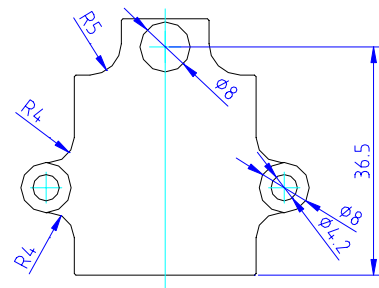
FEATURES

- Robust IP 66 housing
- Cable integrated
- Voltage output signal
- Temperature compensated
- Small size
- Fast response time
- Easy to handle

APPLICATIONS

- Alignment and level control
- Mobile and stationary cranes
- Man lift
- Forklift truck
- Harvester
- Vehicle applications

dimensions [mm]



DQG-Series Inclinometer

performance specifications

PARAMETERS

	Conditions	Min	Type	Max	Unit
Measurement range		-25		+25	°
Sensitivity			80		mV/ °
Offset			2.5		V
Initial Offset	Ta = 25 °C		±0.2		°
Offset temperature drift error	Ta = 0 °C...+50 °C		±0.1		°
	Ta = -40 °C... +85 °C		±0.5		°
Sensitivity temperature drift error	Ta = 0 °C...+50 °C		±0.5		%
	Ta = -40 °C... +85 °C		±1.0		%
Resolution			0.1		°
Output signal	to GND	0.3		4.7	VDC
Power supply		8		30	VDC
Current consumption			10		mA
Operation temperature range		-40		+85	°C
Storage temperature range		-40		+85	°C
Weight			40		g
Cable, pigtail			500		mm
Dimensions	W x D x H		41 x 46 x 20		mm

Terminal Connections

Pin	Name	Description	Type	Color
1	YOut	Y-axis output signal	output	Green
2	XOut	X-axis output signal	output	Brown
3	GND	negative power supply, ground	supply	Yellow
4	Vcc	positive power supply +8...+30VDC	supply	White

ordering info

PART NUMBER	UNIT	SHORT DESCRIPTION
G - NSDQL - 004	NS-25/DQG2-XUA	Range +/-25°, Vcc +8...+30VDC, output +0.3...+4.7VDC

In North America call toll free: • (877) 486-1766 • Fax: (201) 847-1394
Email: nasales@sherbornesensors.com

Rest of World: • +44 (0) 870 444 0728 • Fax: +44 (0) 870 444 0729
Email: sales@sherbornesensors.com • website: www.sherbornesensors.com