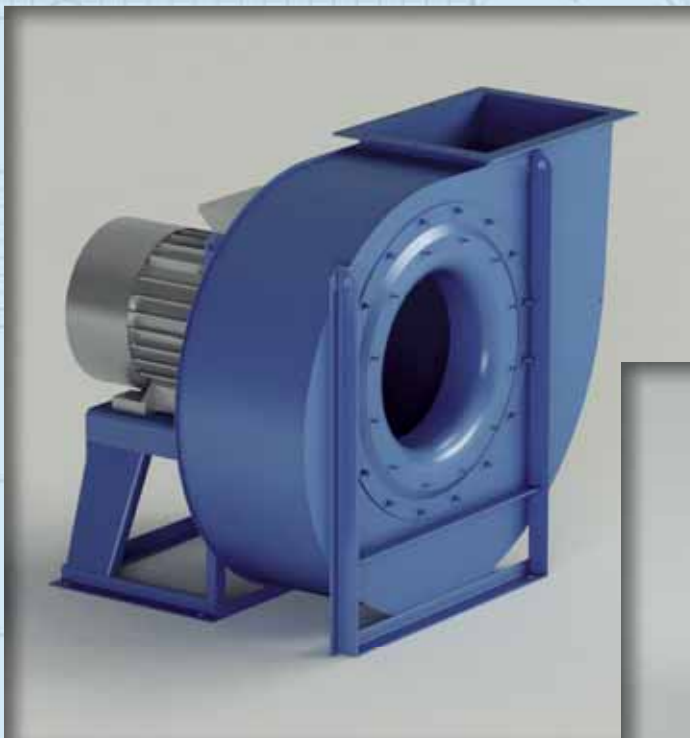


Mod.  
**PRU**

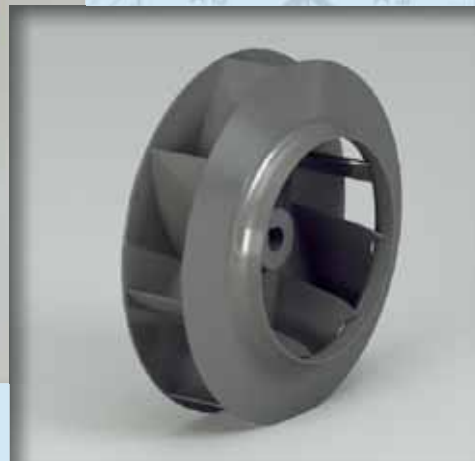


$Q = 360 \div 216000 \text{m}^3/\text{h}$

$Q = 0.1 \div 60 \text{m}^3/\text{s}$

$p_t = 70 \div 915 \text{mmH}_2\text{O}$

$p_t = 700 \div 9000 \text{Pa}$



**Campo di lavoro**

Portate piccole-medie-alte. Pressioni medie.

**Tipo di pala**

Curva, rovescia (negativa), vedi pag. 2.2.

**Applicazioni**

Per aspirazione e trasporto di aria pulita o polverosa, anche contenente in basse quantità segatura, trucioli vari, materiali granulari, ad esclusione di materiali filamentososi.

**Esecuzioni costruttive standard**

Es.1-Es.4-Es.5-Es.8-Es.9-Es.12, vedi pag. 2.5 - 2.6.

**Temperature del fluido standard**

-10÷+60°C. Per altre temperature vedi da pag. 1.12 a pag. 1.15.

**Tipo di costruzione**

Ventilatore in lamiera di Fe360, girante in Fe360 equilibrata staticamente e dinamicamente. Per altri materiali vedi da pag. 1.12 a pag. 1.15.

**Dati di funzionamento**

Condizioni dell'aria all'aspirazione T=20°C, 0m.s.l.m. e  $\rho=1.205 \text{ kg/m}^3$ .

**Rumorosità**

Espressa in potenza sonora  $L_{wA}$  [dB(A)] rilevata in campo libero con ventilatore canalizzato, vedi da pag. 1.43 a pag. 1.49.

**Orientamenti**

N°8 RD (rotazione oraria vista lato trasmissione) e N°8 LG. Ventilatore in versione imbullonata orientabile per le taglie 250-630, orientamento fisso per le taglie 710-2000. Vedi pag. 2.7.

**Costruzioni speciali**

Vedi da pag. 2.20 a pag. 2.30.

**Classi giranti**

La seguente tabella fa riferimento a condizioni di lavoro standard. In condizioni di esercizio gravose si consiglia di contattare il servizio clienti di CORAL per conoscere la tipologia di girante più idonea.

**■ Domaine de travail**

Débits petits-moyens-élevés. Moyennes pressions.

**Type d'ailette**

Courbée, inversée (négative), voir page 2.2.

**Applications**

Pour aspiration et transport d'air propre ou poussiéreux, contenant également en faible quantité de la sciure, divers copeaux, des matières en granulés, sauf matières filamenteuses.

**Configurations de constructions standard**

Ex.1- Ex.4- Ex.5- Ex.8- Ex.9- Ex.12, voir pages 2.5 - 2.6.

**Températures du fluide standard**

-10÷+60°C. Pour d'autres températures voir pages 1.12-1.15.

**Type de fabrication**

Ventilateur en tôle de Fe360, turbine en Fe360 équilibrée statiquement et dynamiquement. Pour d'autres matériaux, voir pages 1.12-1.15.

**Données de fonctionnement**

Conditions de l'air à l'aspiration T=20°C, 0 m asl et  $\rho=1.205 \text{ kg/m}^3$ .

**Niveau sonore**

Exprimé en puissance sonore  $L_{wA}$  [dB(A)], relevé à l'air libre avec un ventilateur canalisé, voir pages 1.43 - 1.49.

**Orientations**

8 RD (rotation dans le sens des aiguilles d'une montre côté transmission) et 8 LG. Ventilateur en version boulonnée orientable pour les tailles 400-630, orientation fixe pour les tailles 710-2000. Voir page 2.7.

**Fabrications spéciales**

Voir pages 2.20-2.30.

**Classes de turbines**

Le tableau ci-dessus fait référence aux conditions de travail normales, en conditions de travail pénibles, on préconise de contacter le service clientèle de CORAL pour connaître le type de turbine le plus adapté.

GRANDEZZA VENTILATORE • Grandeur • Size • Größe • Tamaño	RPM MASSIMO • Maxi tours/min. • Max rpm • Max. U/min • R.p.m. máx.			
	CLASSE I	CLASSE II	CLASSE III	CLASSE IV
PRU250	5000			
PRU280	4750			
PRU310	4500			
PRU350/R	4350			
PRU350	4250			
PRU400/R	4100	5800		
PRU400	4000	5600		
PRU450/R	3750	5400		
PRU450	3600	5000		
PRU500/R	3500	4750		
PRU500	3400	4500		
PRU560/R	3300	4250	4750	
PRU560	3200	4000	4500	
PRU630/R	3100	3750	4250	
PRU630	2950	3600	4000	
PRU710/R	2800	3400	3750	
PRU710	2600	3200	3550	
PRU800/R	2500	3000	3350	3570
PRU800	2350	2800	3150	3500
PRU900/R	2200	2650	3000	3300
PRU900	2100	2500	2800	3100
PRU1000/R	2000	2350	2700	
PRU1000	1900	2250	2550	
PRU1120/R	1800	2150	2400	
PRU1120	1700	2000	2250	
PRU1250/R	1600	1900	2100	
PRU1250	1500	1800	2000	
PRU1400/R	1400	1700	1900	
PRU1400	1300	1600	1800	
PRU1600	1100	1400	1600	
PRU1800	1200	1350	1450	
PRU2000	1000	1150	1250	

**VALORI VALIDI FINO A 60°C**

• Valeurs valables jusqu'à 60°C • Values valid up to 60°C  
• Werte bis 60°C gültig • Valores válidos hasta 60°C

FRA • entre • between • zwischen • entre	60°C	E • et • and • und • y	100°C	DECLASSARE VELOCITÀ • déclasser vitesse • degrade speed • Geschwindigkeit herabsetzen • rebajar velocidad	4%
	100°C		150°C		10%
	150°C		200°C		16%
	200°C		250°C		23%
	250°C		300°C		30%
	300°C		350°C		37%
	350°C		400°C		45%
	400°C		450°C		54%
	450°C		500°C		64%

**■ Field of operation**

Low-medium-high flow rates. Average pressures.

**Blade type**

Curve, backward (negative), see pg. 2.2.

**Applications**

For the inlet and transport of clean or dusty air, also containing low quantities of sawdust, various chips, granular materials, with the exclusion of filaments.

**Standard constructional arrangements**

Arr.1-Arr.4-Arr.5-Arr.8-Arr.9-Arr.12, see pgs. 2.5 - 2.6.

**Standard fluid temperatures**

-10÷+60°C. For other temperatures see pgs. 1.12 to 1.15.

**Type of construction**

Fan in Fe360 plate, impeller in Fe360 statically and dynamically balanced. For other materials see pgs. 1.12 to 1.15.

**Operating specifications**

Condition of inlet air T=20°C, 0 m above sea level and  $\rho=1.205 \text{ kg/m}^3$ .

**Noise level**

Expressed as sound power  $L_{wA}$  [dB(A)] measured in free field with ducted fan, see pgs. 1.43 to 1.49.

**Orientations**

No.8 RD (clockwise viewed from transmission side) and No.8 LG. Fan in bolted orientable version for sizes 400-630, fixed orientation for sizes 710-2000. See pg. 2.7.

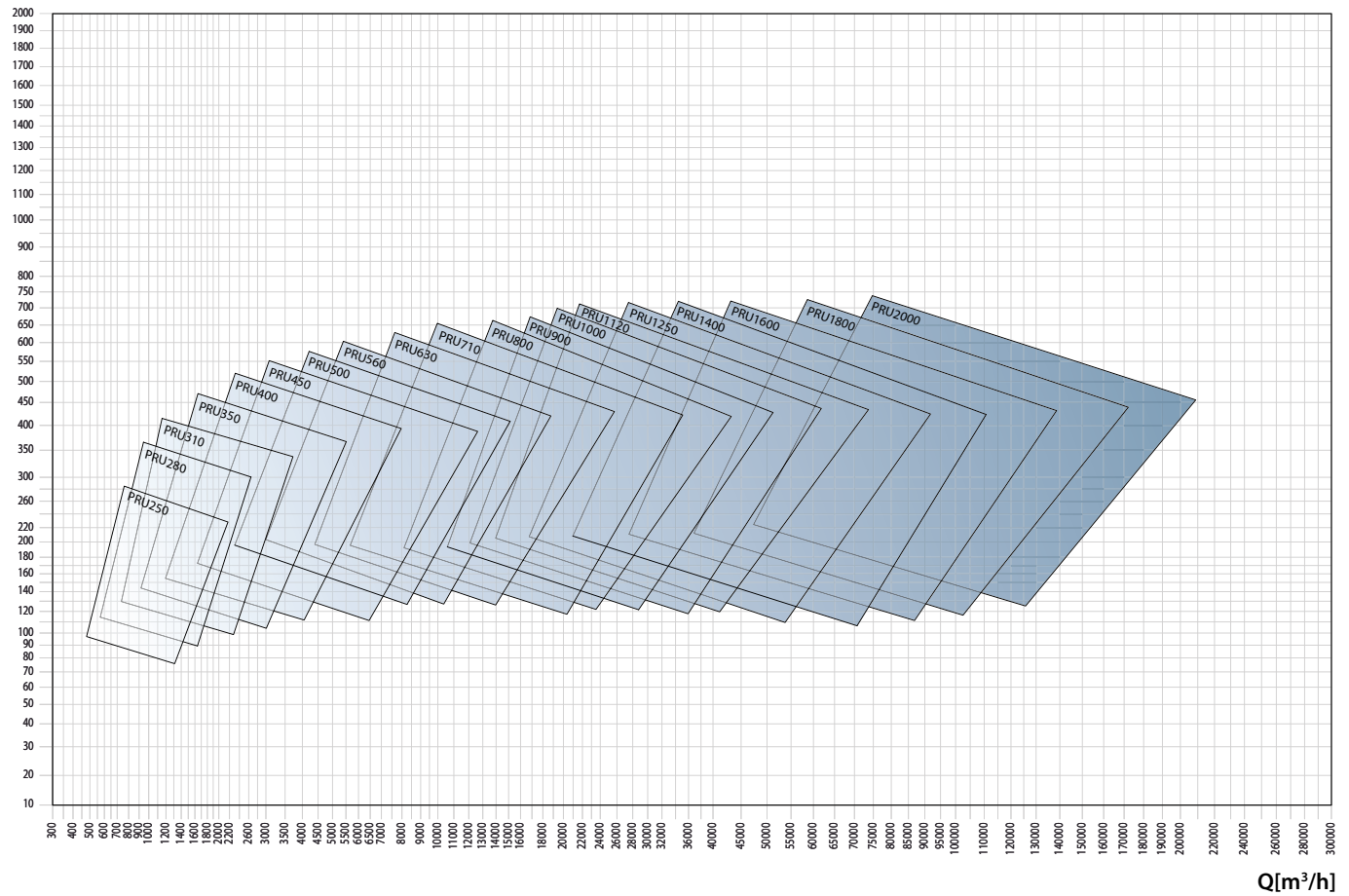
**Special applications**

See pgs. 2.20 to 2.30.

**Impeller classes**

The above table refers to standard operating conditions, in heavy-duty service conditions it is advisable to contact the CORAL Customer Service to establish the most suitable type of impeller.

pt [mmH<sub>2</sub>O]



■ **Arbeitsbereich**

Niedrige - mittlere - grosse Fördermengen. Mittlere Drücke.

**Schaufelform**

Kurve, rückwärts gekrümmt (negativ), siehe Seite 2.2.

**Anwendungen**

Zur Absaugung und zum Transport von sauberer und staubhaltiger Luft, auch mit geringem Anteil von Sägestaub, Spänen verschiedener Art, Granulaten, ausser fadenförmigen Materialien.

**Konstruktive Standardausführungen**

Ausf. 1-Ausf. 4-Ausf. 5-Ausf. 8-Ausf. 9-Ausf. 12, siehe Seiten 2.5 - 2.6.

**Standardtemperatur des Mediums**

-10 ÷ +60°C. Für andere Temperaturen siehe Seiten 1.12 bis 1.15.

**Konstruktionsart**

Ventilator aus Blech Fe360, Laufrad aus Fe360, statisch und dynamisch ausgewuchtet. Für andere Materialien siehe Seiten 1.12 bis 1.15.

**Betriebsdaten**

Physikalischer Zustand der Ansaugluft T = 20°C, 0 m ü. M. und ρ = 1.205 kg/m<sup>3</sup>.

**Geräuschpegel**

angegeben als Schalleistungspegel L<sub>wA</sub> [dB(A)] mit Messung im Freifeld und an Rohren angeschlossenem Ventilatore, siehe Seiten 1.43 bis 1.49.

**Ausrichtung**

8 Modelle RD (Drehrichtung im Uhrzeigersinn, von Antriebsseite aus gesehen) und 8 Modelle LG. Angeschraubter, in der Ausrichtung veränderbarer Ventilator in den Grössen 400 - 630, mit Vorderstütze und damit nicht veränderbar ab Grösse 710 mit Riementrieb, immer ausrichtbar bei allen direkt angetriebenen Ventilatoren ohne Vorderstütze, siehe Seite 2.7.

**Spezialausführungen**

Siehe Seiten 2.20 bis 2.30.

**Laufradklassen**

Die obenstehende Tabelle bezieht sich auf normale Betriebsbedingungen. Bei erschwerenden Betriebsbedingungen wird empfohlen, den Kundenservice von CORAL zu kontaktieren, um den am besten geeigneten Laufradtyp zu bestimmen.

■ **Campo de trabajo**

Caudales pequeños-medios-altos. Presiones medias.

**Tipo de pala**

Curva, invertida (negativa), ver pág. 2.2.

**Aplicaciones**

Para aspiración y transporte de aire limpio o cargado de polvo, incluso con pequeñas cantidades de serrín, virutas de distintos tipos y materiales granulados, exceptuando los materiales filamentosos.

**Variantes constructivas estándares**

Ejec.1-Ejec.4-Ejec.5-Ejec.8-Ejec.9-Ejec.12, ver págs. 2.5 - 2.6.

**Temperaturas del fluido estándares**

De -10 a +60°C. Para otras temperaturas, ver págs. de 1.12 a 1.15.

**Tipo de construcción**

Ventilador de chapa en Fe360, rotor en Fe360 equilibrado estática y dinámicamente. Para otros materiales, ver págs. de 1.12 a 1.15.

**Datos de funcionamiento**

Condiciones del aire en aspiración T=20°C, 0 m SNM y ρ=1.205 kg/m<sup>3</sup>.

**Niveles de ruido**

Expresados en potencia sonora L<sub>wA</sub> [dB(A)] medida en campo abierto con ventilador canalizado, ver págs. de 1.43 a 1.49.

**Orientaciones**

8 RD (rotación dextrógira vista desde el lado de transmisión) y 8 LG. Ventilador en versión emperrada orientable para tamaños 400-630, orientación fija para tamaños 710-2000. Ver pág. 2.7.

**Construcciones especiales**

Ver págs. de 2.20 a 2.30.

**Clases de rotores**

La tabla arriba hace referencia a condiciones de trabajo estándares, en condiciones de funcionamiento pesadas, se aconseja llamar al Servicio de atención al cliente de CORAL para conocer el tipo de rotor más adecuado.

Tipo • Type • Type • Typ • Tipo		P inst. [kW]	n	LpA [dB(A)]	Tolleranza sulla portata ±5% • Tolérance sur le débit ±5% • Load tolerance ±5% • Durchsatztoleranz ±5% • Tolerancia respecto caudal ±5%																			
Ventilatore • Ventilateur • Fan • Ventilator • Ventilador	Motore • Moteur • Motor • Motor • Motor				Q [m³/h]																			
					pt[mmH <sub>2</sub> O]																			
		470 540 650 720 790 865 935 1080 1225 1370 1440 1620 1800 2160 2520 2880 3240 3600 3960 4320																						
PRU250/2	71	0,37	2800	56	91	90	88	86	84	82	80	74												
PRU280/2	71	0,55	2800	59		115	114	113	112	111	109	106	101	96	93									
PRU310/2	80	1,1	2845	60					154	154	153	153	152	151	150	148	145	138						
PRU350/2	90	2,2	2920	64								200	198	197	196	195	194	192	189	183				
PRU400/2	100	3	2930	68												257	256	255	255	254	249			
PRU400/2	112	4	2940	68												257	256	255	255	254	249	243	235	230
PRU450/2R	132	5,5	2940	71														308	304	299	294	287	279	
PRU450/2	132	5,5	2940	67																340	336	333	327	321
PRU450/2	132	7,5	2940	73																340	336	333	327	321
PRU500/2R	132	7,5	2940	68																		386	382	378
PRU500/2	132	9,2	2940	69																			418	416
PRU500/2	160	11	2960	74																			426	423
PRU560/2R	160	15	2960	74																				
PRU560/2	160	15	2960	70																				
PRU560/2	160	18,5	2960	77																				
PRU630/2R	180	22	2960	74																				
PRU630/2R	200	30	2960	78																				
PRU630/2	200	30	2960	74																				
PRU630/2	200	37	2960	79																				
PRU710/2R	225	45	2970	75																				
PRU710/2R	250	55	2970	80																				
PRU710/2	250	55	2970	76																				
PRU710/2	280	75	2970	82																				
PRU800/2R	280	90	2970	82																				
PRU800/2	315	110	2970	83																				
PRU500/4	90	1,1	1415	56													97	96	94	92	88	84		
PRU560/4	100	2,2	1420	60																121	119	118	117	114
PRU630/4	112	4	1440	63																		154	153	152
PRU710/4R	132	5,5	1460	66																				
PRU710/4	132	7,5	1470	68																				
PRU800/4R	160	11	1470	69																				
PRU800/4	160	15	1470	71																				
PRU900/4R	180	18,5	1470	73																				
PRU900/4	200	30	1470	74																				
PRU1000/4R	225	37	1470	75																				
PRU1000/4	225	45	1470	77																				
PRU1120/4R	250	55	1475	76																				
PRU1120/4	280	75	1480	79																				
PRU1250/4R	315	110	1485	80																				
PRU1250/4	315	132	1485	81																				
PRU1400/4R	315	200	1490	82																				
PRU1400/4	315	250	1490	84																				
PRU800/6	132	4	950	63																				
PRU900/6	160	7,5	960	63																				
PRU1000/6R	160	11	980	66																				
PRU1000/6	180	15	980	67																				
PRU1120/6R	200	18,5	980	67																				
PRU1120/6	200	22	980	70																				
PRU1250/6R	225	30	980	71																				
PRU1250/6	250	37	980	72																				
PRU1400/6R	280	45	980	74																				
PRU1400/6	315	75	980	75																				

Il livello di pressione sonora ponderato A, LpA (cap.14), corrisponde al valore rilevato, nelle condizioni di prova, nel punto di massima rumorosità.



Tipo • Type • Type • Typ • Tipo		P inst. [kW]	n	LpA [dB(A)]	Tolleranza sulla portata ±5% • Tolérance sur le débit ±5% • Load tolerance ±5% • Durchsatztoleranz ±5% • Tolerancia respecto caudal ±5%																			
Ventilatore • Ventilateur • Fan • Ventilator • Ventilador	Motore • Moteur • Motor • Motor • Motor				Q [m³/h]																			
					470	540	650	720	790	865	935	1080	1225	1370	1440	1620	1800	2160	2520	2880	3240	3600	3960	4320
					pt[mmH <sub>2</sub> O]																			
PRU250/2	71	0,37	2800	56	90	89	87	85	83	81	79	73												
PRU280/2	71	0,55	2800	59		114	113	112	111	110	108	105	100	95	91									
PRU310/2	80	1,1	2845	60					152	152	151	151	149	148	147	145	142	135						
PRU350/2	90	2,2	2920	64								196	194	193	192	191	190	188	185	179				
PRU400/2	100	3	2930	68											251	249	248	248	247	242				
PRU400/2	112	4	2940	68											251	249	248	248	247	242	236	228	223	
PRU450/2R	132	5,5	2940	71														299	295	290	285	278	270	
PRU450/2	132	5,5	2940	67																329	325	322	316	310
PRU450/2	132	7,5	2940	73																329	325	322	316	310
PRU500/2R	132	7,5	2940	68																		372	368	364
PRU500/2	132	9,2	2940	69																			401	399
PRU500/2	160	11	2960	74																			409	406
PRU560/2R	160	15	2960	74																				
PRU560/2	160	15	2960	70																				
PRU560/2	160	18,5	2960	77																				
PRU630/2R	180	22	2960	74																				
PRU630/2R	200	30	2960	78																				
PRU630/2	200	30	2960	74																				
PRU630/2	200	37	2960	79																				
PRU710/2R	225	45	2970	75																				
PRU710/2R	250	55	2970	80																				
PRU710/2	250	55	2970	76																				
PRU710/2	280	75	2970	82																				
PRU800/2R	280	90	2970	82																				
PRU800/2	315	110	2970	83																				
PRU500/4	90	1,1	1415	56											96	95	93	91	87	83				
PRU560/4	100	2,2	1420	60														119	117	116	115	112		
PRU630/4	112	4	1440	63																	151	150	149	
PRU710/4R	132	5,5	1460	66																				
PRU710/4	132	7,5	1470	68																				
PRU800/4R	160	11	1470	69																				
PRU800/4	160	15	1470	71																				
PRU900/4R	180	18,5	1470	73																				
PRU900/4	200	30	1470	74																				
PRU1000/4R	225	37	1470	75																				
PRU1000/4	225	45	1470	77																				
PRU1120/4R	250	55	1475	76																				
PRU1120/4	280	75	1480	79																				
PRU1250/4R	315	110	1485	80																				
PRU1250/4	315	132	1485	81																				
PRU1400/4R	315	200	1490	82																				
PRU1400/4	315	250	1490	84																				
PRU800/6	132	4	950	63																				
PRU900/6	160	7,5	960	63																				
PRU1000/6R	160	11	980	66																				
PRU1000/6	180	15	980	67																				
PRU1120/6R	200	18,5	980	67																				
PRU1120/6	200	22	980	70																				
PRU1250/6R	225	30	980	71																				
PRU1250/6	250	37	980	72																				
PRU1400/6R	280	45	980	74																				
PRU1400/6	315	75	980	75																				

Il livello di pressione sonora ponderato A, LpA (cap.14), corrisponde al valore rilevato, nelle condizioni di prova, nel punto di massima rumorosità.

CARATTERISTICHE IN ASPIRAZIONE

CARACTERISTIQUES EN FAIT D'ASPIRATION ■ SUCTION CHARACTERISTICS ■ ANSAUGEIGENSCHAFTEN ■ CARACTERISTICAS EN ASPIRACION



**Tolleranza sulla rumorosità ±4dB(A)**  
 • Tolérance sur le bruit ±4dB(A) • Noise tolerance ±4dB(A)  
 • Geräushtoleranz ±4dB(A) • Tolerancia respecto a ruido ±4dB(A)

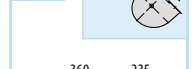
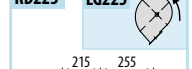
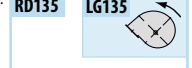
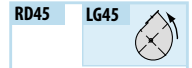
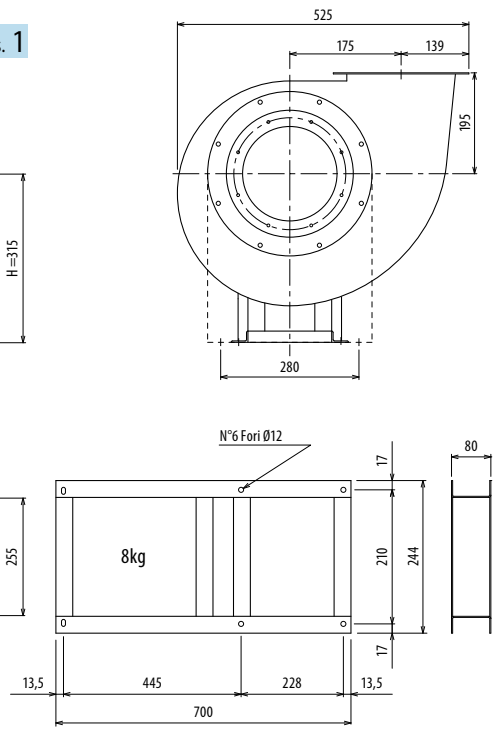
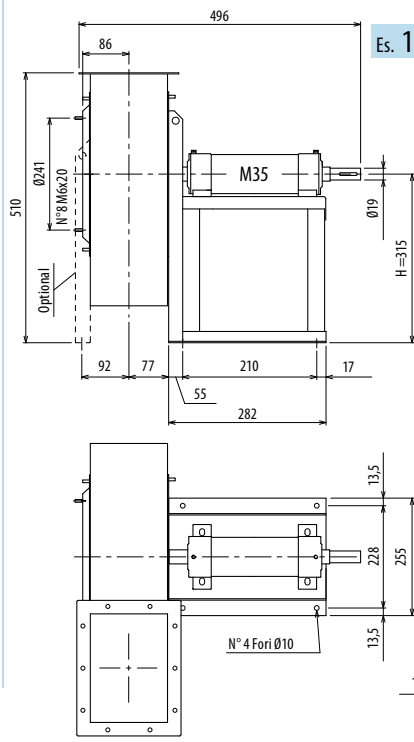
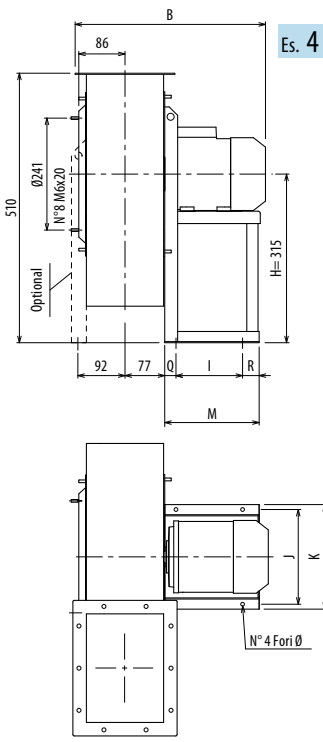
Q [m³/h]																												
4680	5400	6120	7200	7920	9000	10080	10800	12600	14400	16200	18000	19800	21600	25200	28800	32400	36000	39600	43200	46800	54000	61200	68500	76500	85000	110000		
pt[mmH <sub>2</sub> O]																												
263	244	222	184																									
305	290																											
305	290	275	240	220																								
359	349	336	313																									
397	390	378	358	341																								
403	395	382	363	344	314	287																						
458	451	446	429	419	395	379	358	313																				
	506	503	496	489	473	460																						
	506	503	496	489	473	460	436	409																				
		561	558	555	548	541	536																					
		561	558	555	548	541	536	517	493	463	425	379	323															
			623	621	616	611	607	594	578																			
			623	621	616	611	607	594	578	556	529	496	458	357														
					707	702	701	696	690	680	665	644	618															
					707	702	701	696	690	680	665	644	618	545	456													
						795	791	786	782	777	770	760	745															
							795	791	786	782	777	770	760	745	702	639	560	471										
									924	918	914	910	905	901	883	857												
										990	986	981	976	974	962	947	915	878										
109	101	91																										
148	147	145	139	135	125	117	104																					
183	181	180	178	176	171	163																						
	205	204	202	200	199	196	192	184	162																			
				239	238	237	235	230	222	209																		
				259	258	256	255	252	246	238	226	212	194	152														
						305	304	302	300	297	292																	
							328	327	324	322	320	316	312	305	288	267	227											
										368	366	365	363	360	351	336	315	287	256									
										401	398	396	394	393	387	377	363	344	319	290								
												449	445	436	428	418	405	389	369	353	300							
													503	499	489	482	475	464	446	432	398	356						
															575	569	562	553	547	537	515	483	445	388				
															624	618	611	605	597	591	578	555	532	485	424			
																699	694	692	685	681	667	652	634	609	572	441		
																	782	778	775	771	763	753	734	716	693	602		
	110	109	107	106	105	103	101	90	80																			
				141	140	139	137	135	133	125	115	107	94															
						167	166	164	163	159	156	149	142	122														
						181	180	179	177	176	174	170	164	152	131													
									201	198	195	192	189	178	167	151												
									226	224	222	220	218	211	202	192	177	159										
												257	255	252	245	238	231	220	209	194								
												284	280	277	272	267	260	254	243	230	207							
														312	311	304	298	292	286	278	262	238						
															347	344	342	339	334	329	320	302	283	254				

■ Le niveau de pression sonore pondérée A, LpA (chap. 14), correspond à la valeur relevée dans les conditions d'essai au point de niveau sonore maximum.

■ Der nach A bewertete Schalldruckpegel LpA (Kap. 14) entspricht in den Testbedingungen dem höchsten gemessenen Wert des Geräuschpegels.

■ The A-weighted sound power level, LpA (Chap.14), is the value measured in test conditions at the point of maximum noise level.

■ El nivel de presión sonora ponderado A, LpA (cap. 14), corresponde al valor medido, en las condiciones de prueba, en el punto con máximos niveles de ruido.

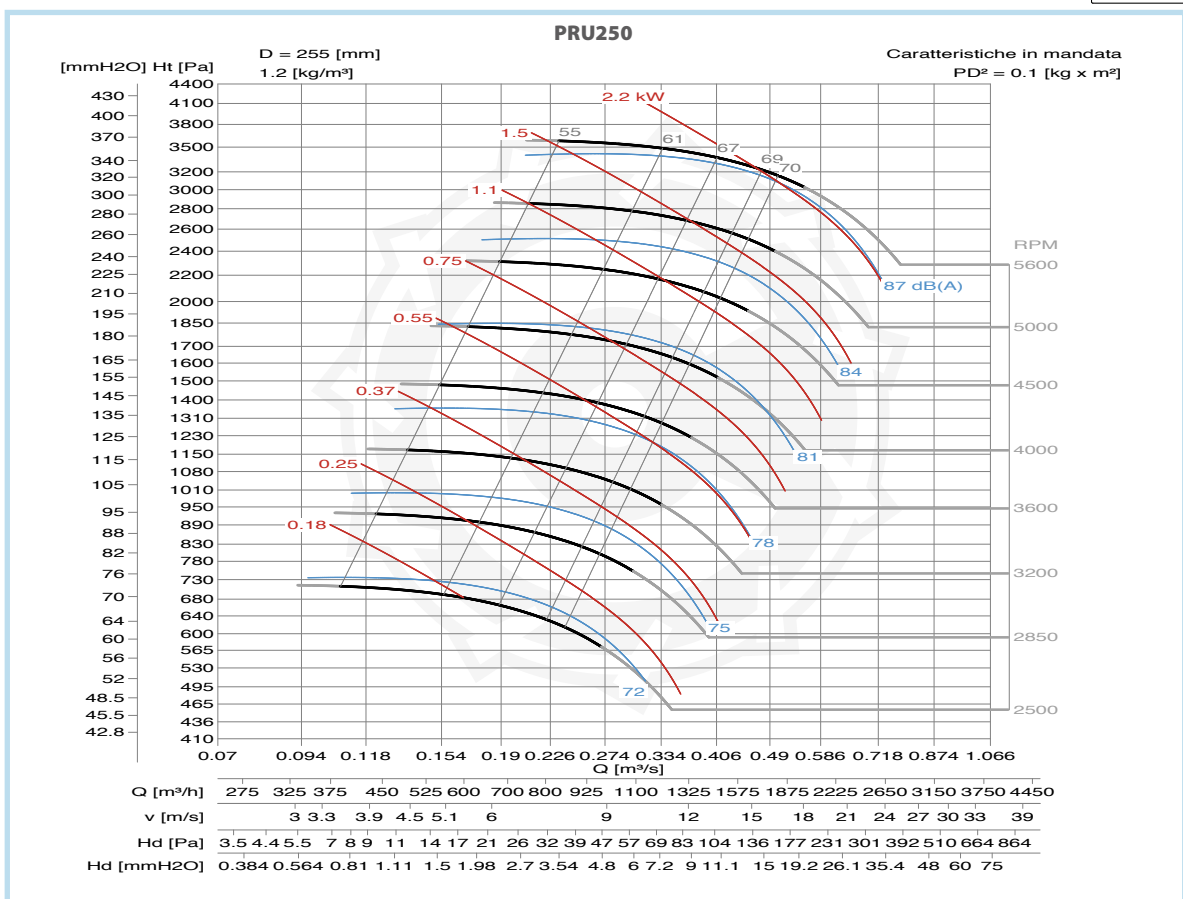
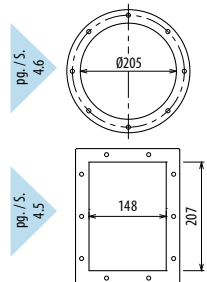


Il ventilatore è orientabile - Peso in tabella comprensivo di motore

- Le ventilateur est orientable
- The fan is revolvable
- Der Ventilator ist drehbar
- El ventilador es orientable
- Le poids dans le tableau inclut le moteur
- The weight indicated in the table includes motor
- Das Gewicht im Tafel schließt den Motor ein
- El peso en la tabla incluye el motor

TIPO - Type		PESO Weight Kg	PD <sup>2</sup> Kg f x m <sup>2</sup>	B	I	H	H1	H2	J	K	M	Q	R	Ø
VENTILATORE Fan	MOTORE Motor													
PRU250/2	71 A2	28	0,10	396	121	315	195	315	203	225	195	48	26	10
PRU250/T		30	0,10			315	195	315						

Ulteriori informazioni e quote:  
■ Ulérieures informations et cotes:  
■ Further information and sizes:  
■ Weitere Infos und Größen:  
■ Más informaciones y medidas:





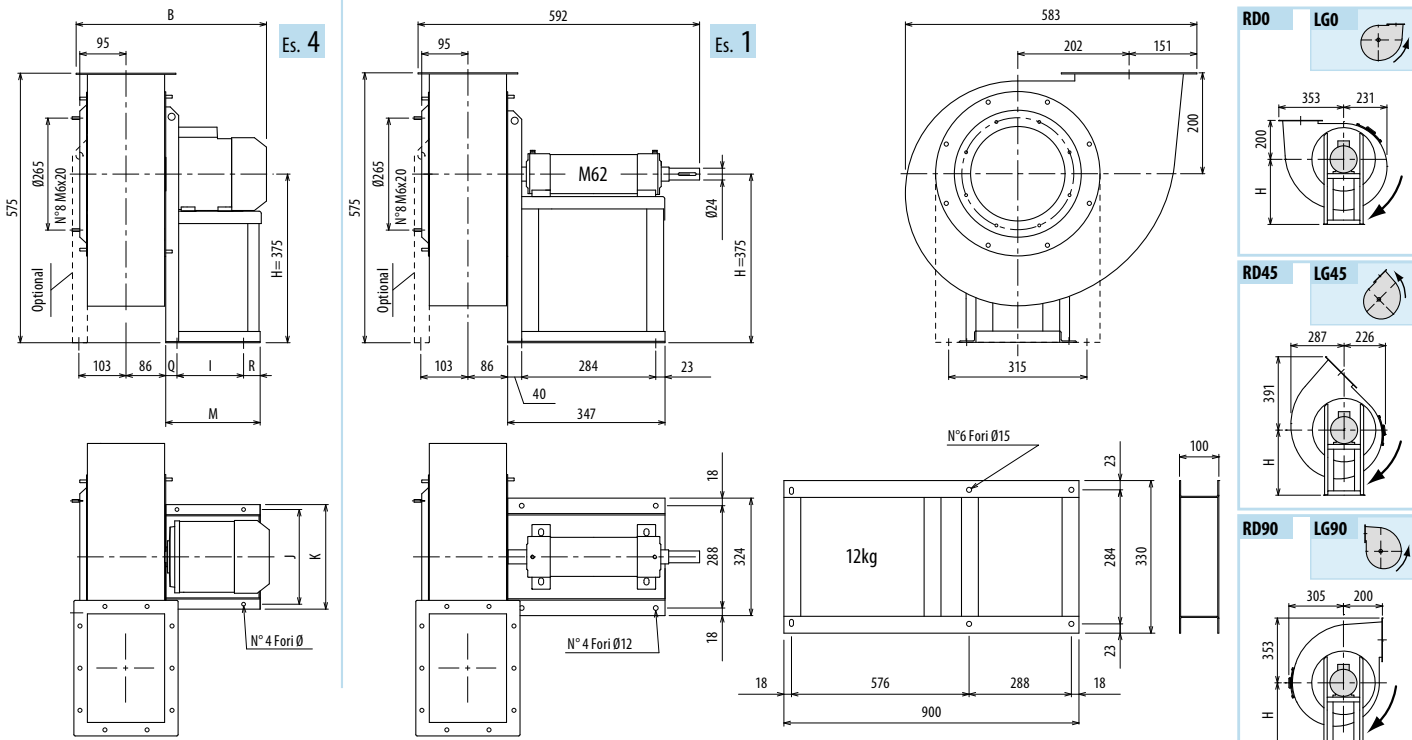
# DIMENSIONI D'INGOMBRO E PESI/CURVE DI FUNZIONAMENTO

■ DIMENSIONS D'ENCOMBREMENT ET POIDS/COURBES DE FONCTIONNEMENT ■ OVERALL DIMENSIONS AND WEIGHT/WORKING CURVES  
 ■ AUSMAßE UND GEWICHTE/FUNKTIONSKURVEN ■ DIMENSIONES QUE OCUPA Y PESOS/CURVAS DE FUNCIONAMIENTO

## PRU280



PRU



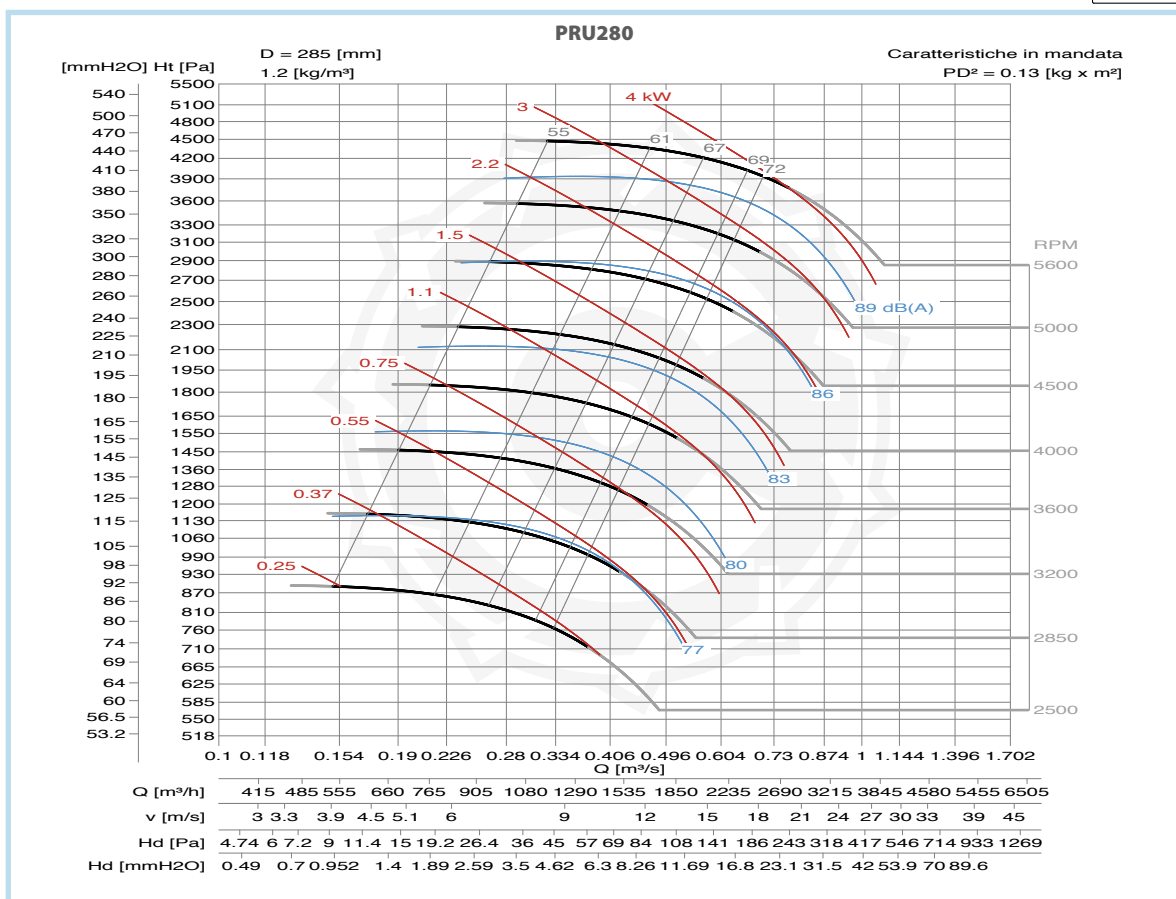
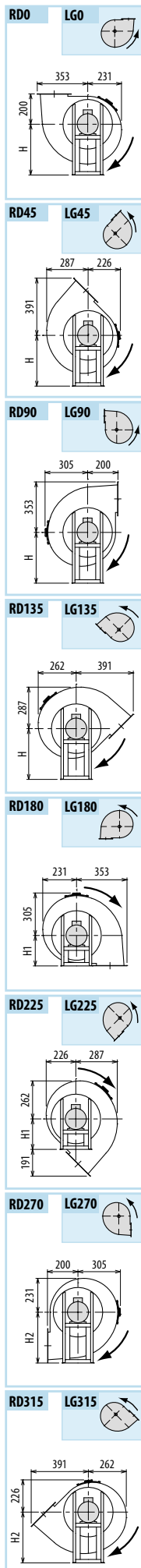
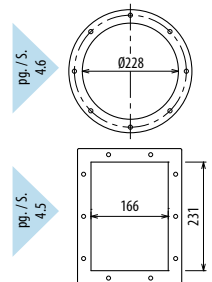
Il ventilatore è orientabile • Peso in tabella comprensivo di motore

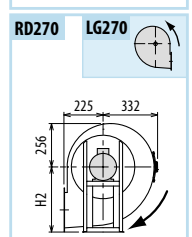
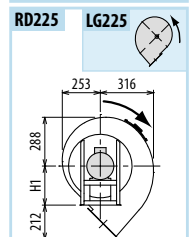
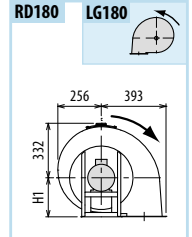
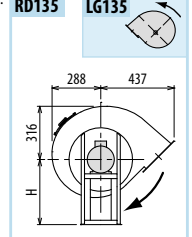
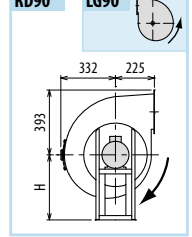
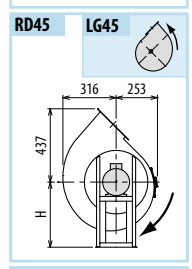
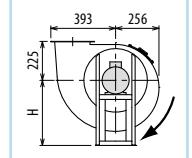
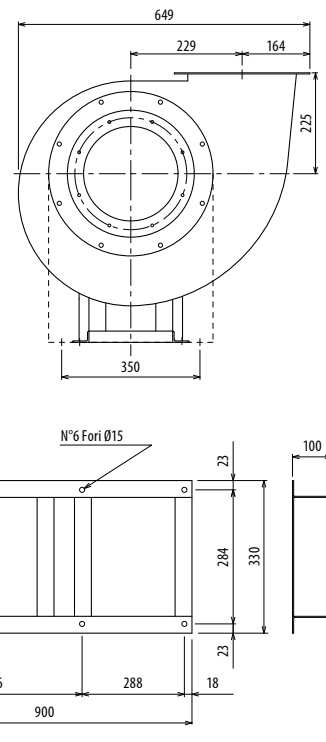
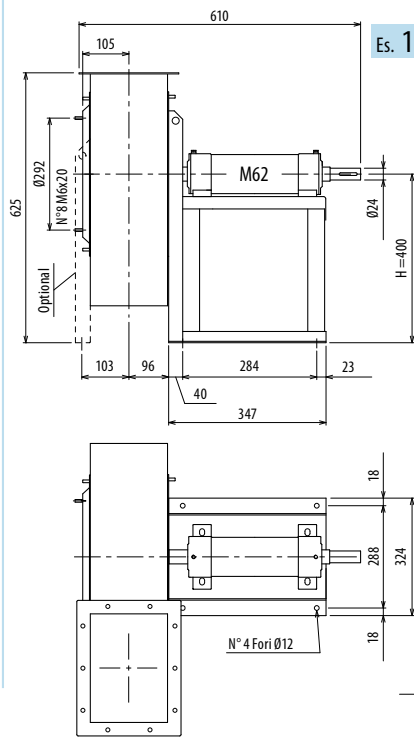
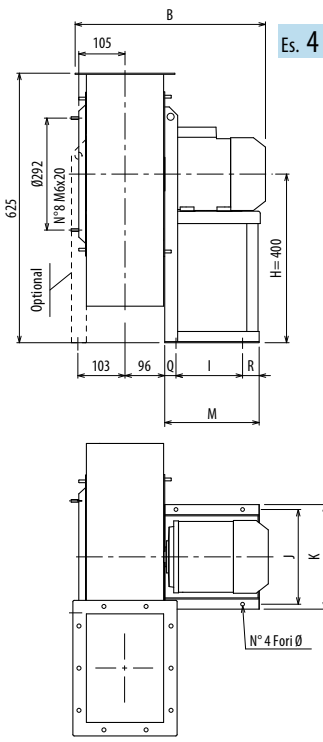
- Le ventilateur est orientable
  - The fan is revolvable
  - Der Ventilator ist drehbar
  - El ventilador es orientable
- Le poids dans le tableau inclut le moteur    The weight indicated in the table includes motor    Das Gewicht im Tafel schließt den Motor ein    El peso en la tabla incluye el motor

Ulteriori informazioni e quote:

- Ulérieures informations et cotes:
- Further information and sizes:
- Weitere Infos und Größen:
- Más informaciones y medidas:

TIPO - Type		PESO Weight Kg	PD <sup>2</sup> Kg f x m <sup>2</sup>	B	I	H	H1	H2	J	K	M	Q	R	Ø
VENTILATORE Fan	MOTORE Motor													
PRU280/2	71 B2	30	0,13	414	121	375	200	375	203	225	195	48	26	10
PRU280/T		37	0,13			375	200	375						



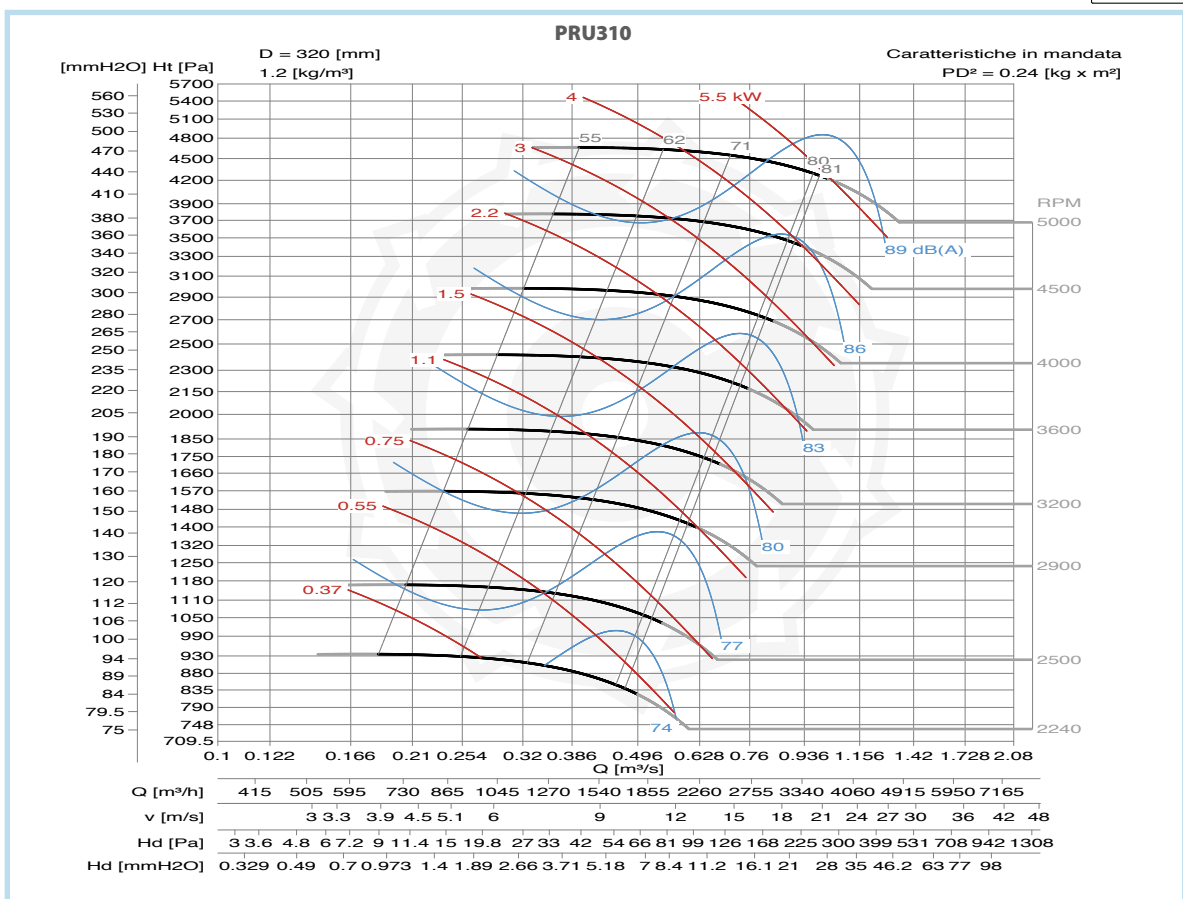
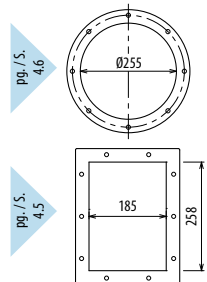


Il ventilatore è orientabile - Peso in tabella comprensivo di motore

- Le ventilateur est orientable
  - The fan is revolvable
  - Der Ventilator ist drehbar
  - El ventilador es orientable
- Le poids dans le tableau inclut le moteur The weight indicated in the table includes motor Das Gewicht im Tafel schließt den Motor ein El peso en la tabla incluye el motor

Ulteriori informazioni e quote:  
■ Ulérieures informations et cotes:  
■ Further information and sizes:  
■ Weitere Infos und Größen:  
■ Más informaciones y medidas:

TIPO - Type		PESO Weight Kg	PD <sup>2</sup> Kg f x m <sup>2</sup>	B	I	H	H1	H2	J	K	M	Q	R	Ø
VENTILATORE Fan	MOTORE Motor													
PRU310/2	80 B2	42	0,24	458	121	400	225	400	203	225	211	45	45	10
PRU310/T		55	0,24			400	225	400						



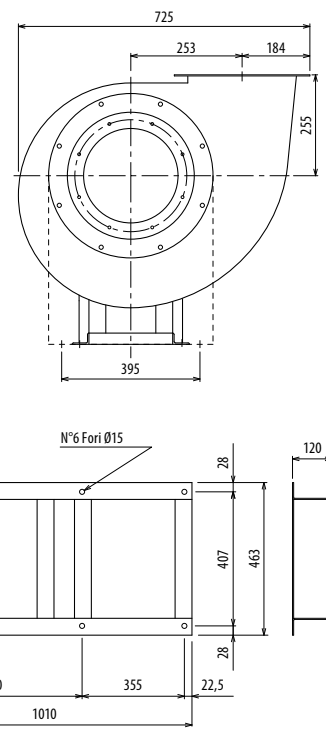
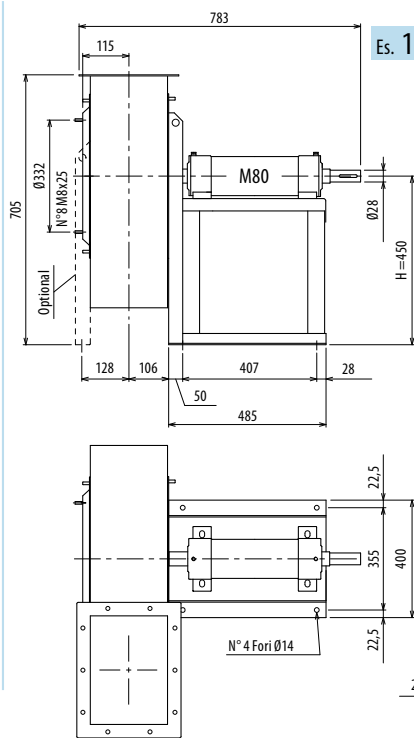
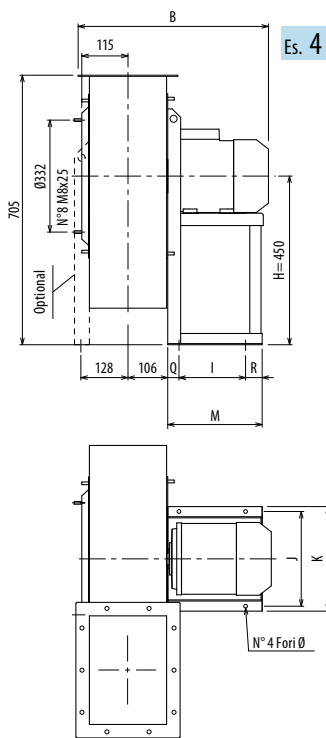
# DIMENSIONI D'INGOMBRO E PESI/CURVE DI FUNZIONAMENTO

■ DIMENSIONS D'ENCOMBREMENT ET POIDS/COURBES DE FONCTIONNEMENT ■ OVERALL DIMENSIONS AND WEIGHT/WORKING CURVES  
 ■ AUSMAßE UND GEWICHTE/FUNKTIONSKURVEN ■ DIMENSIONES QUE OCUPA Y PESOS/CURVAS DE FUNCIONAMIENTO

## PRU350



PRU

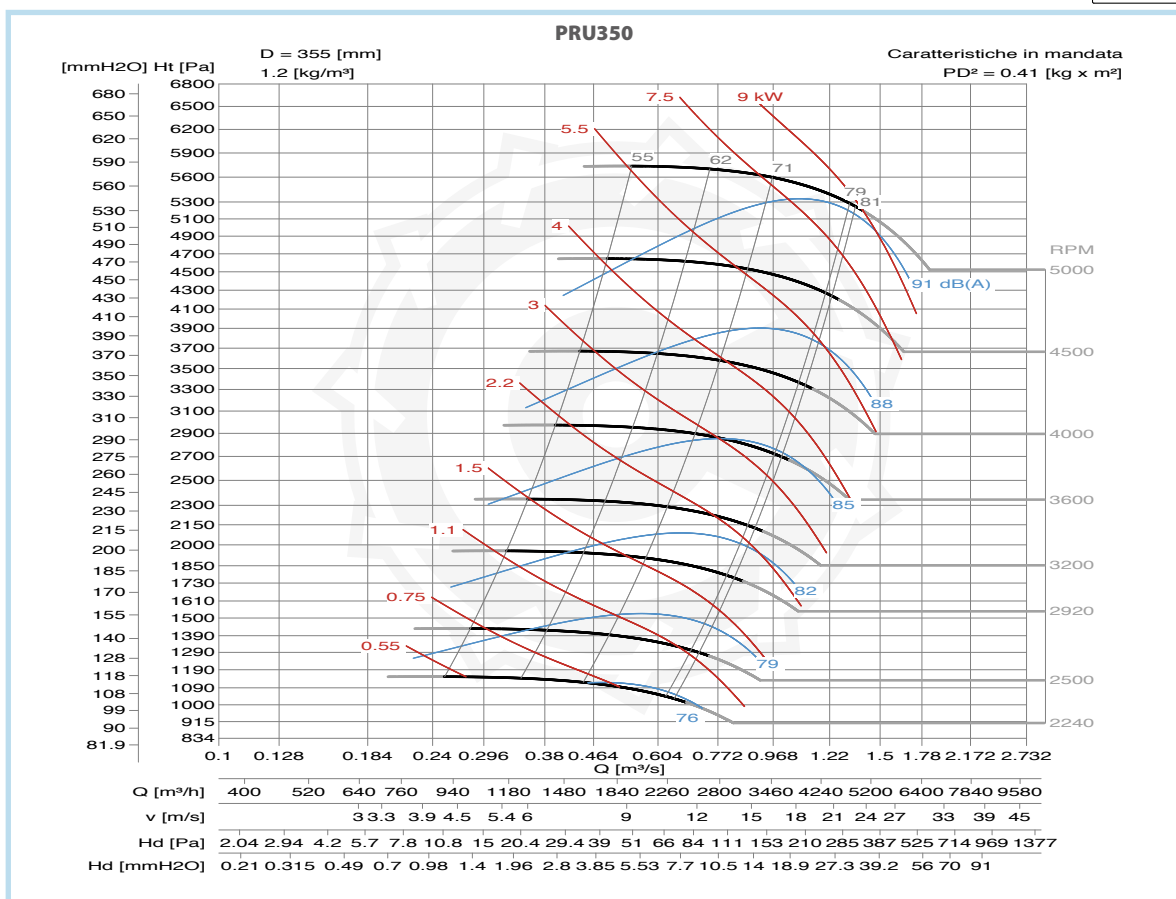
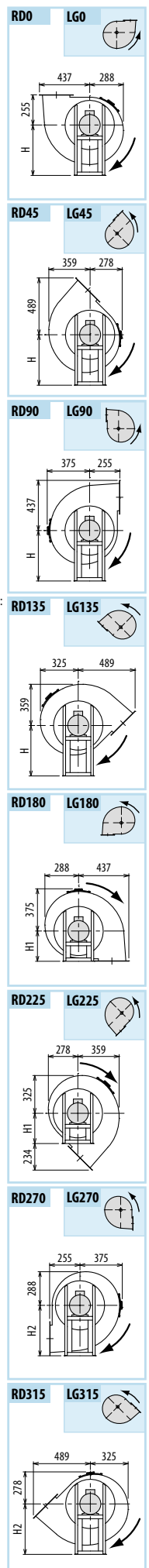
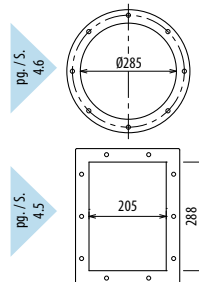


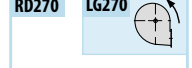
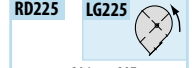
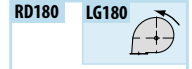
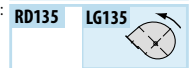
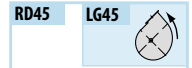
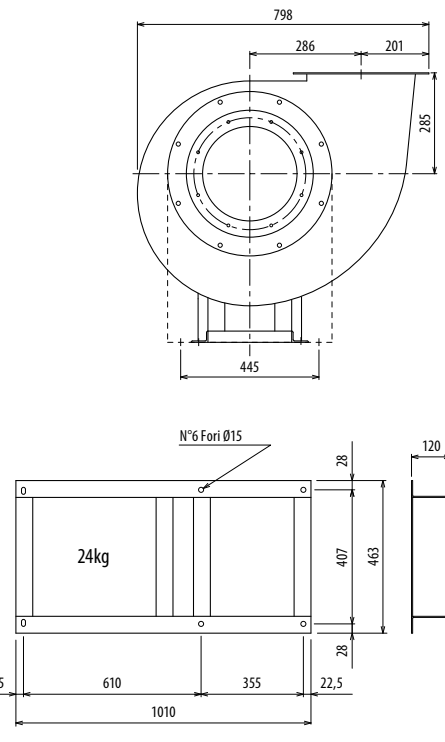
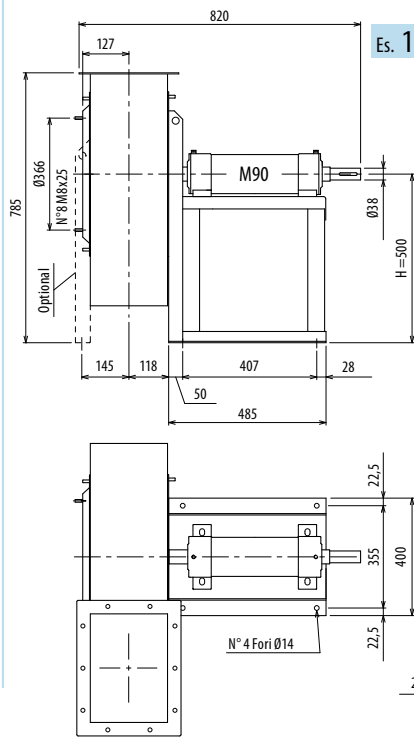
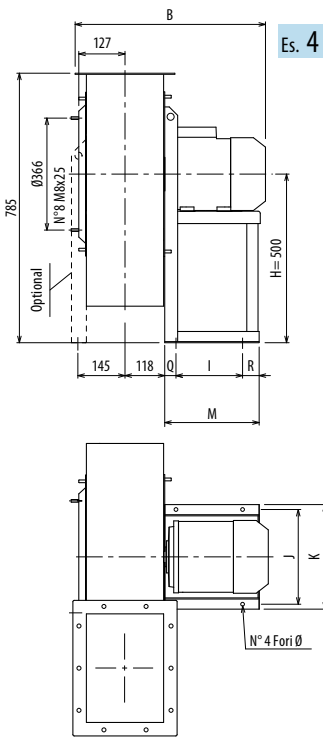
Il ventilatore è orientabile • Peso in tabella comprensivo di motore

- Le ventilateur est orientable
- The fan is revolvable
- Der Ventilator ist drehbar
- El ventilador es orientable
- Le poids dans le tableau inclut le moteur
- The weight indicated in the table includes motor
- Das Gewicht im Tafel schließt den Motor ein
- El peso en la tabla incluye el motor

Ulteriori informazioni e quote:  
 ■ Ulérieures informations et cotes:  
 ■ Further information and sizes:  
 ■ Weitere Infos und Größen:  
 ■ Más informaciones y medidas:

TIPO - Type		PESO Weight Kg	PD <sup>2</sup> Kg f x m <sup>2</sup>	B	I	H	H1	H2	J	K	M	Q	R	Ø
VENTILATORE Fan	MOTORE Motor													
PRU350/2	90 L2	62	0,41	530	133	450	255	450	234	260	246	55	58	10
PRU350/T		72	0,41			450	255	450						



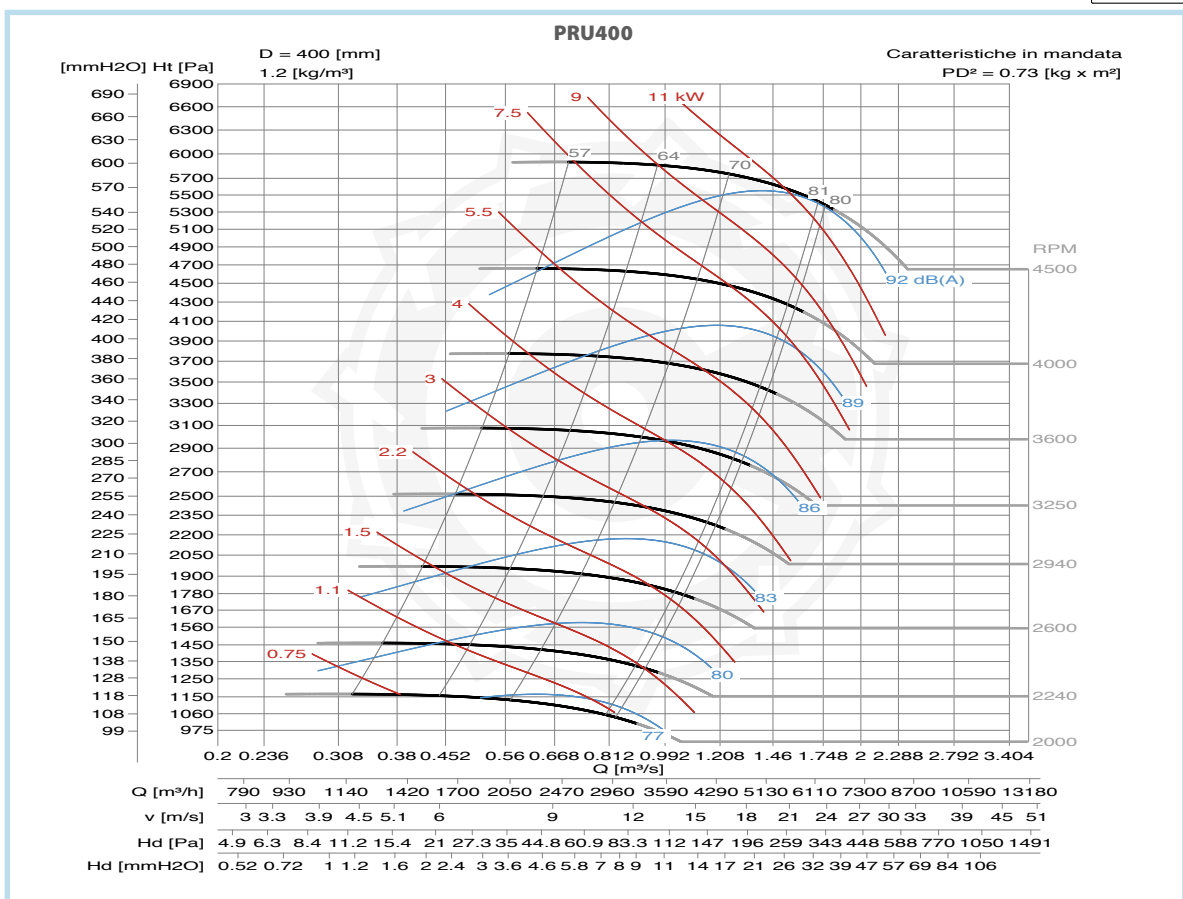
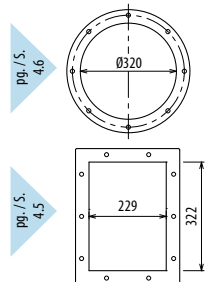


Il ventilatore è orientabile • Peso in tabella comprensivo di motore

- Le ventilatore est orientable
  - The fan is revolvable
  - Der Ventilator ist drehbar
  - El ventilador es orientable
- Le poids dans le tableau inclut le moteur    The weight indicated in the table includes motor    Das Gewicht im Tafel schließt den Motor ein    El peso en la tabla incluye el motor

TIPO - Type		PESO Weight Kg	PD <sup>2</sup> Kg f x m <sup>2</sup>	B	I	H	H1	H2	J	K	M	Q	R	Ø
VENTILATORE Fan	MOTORE Motor													
PRU400/2	100 L2	82	0,73	580	197	500	285	500	289	324	276	30	49	12
PRU400/2	112 M2	90	0,73	606	197	500	285	500	289	324	276	30	49	12
PRU400/T		82	0,73			500	285	500						

Ulteriori informazioni e quote:  
 ■ Ulérieures informations et cotes:  
 ■ Further information and sizes:  
 ■ Weitere Infos und Größen:  
 ■ Más informaciones y medidas:



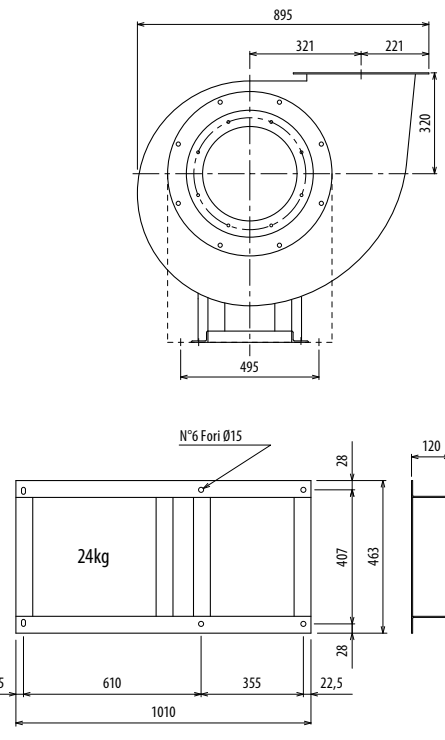
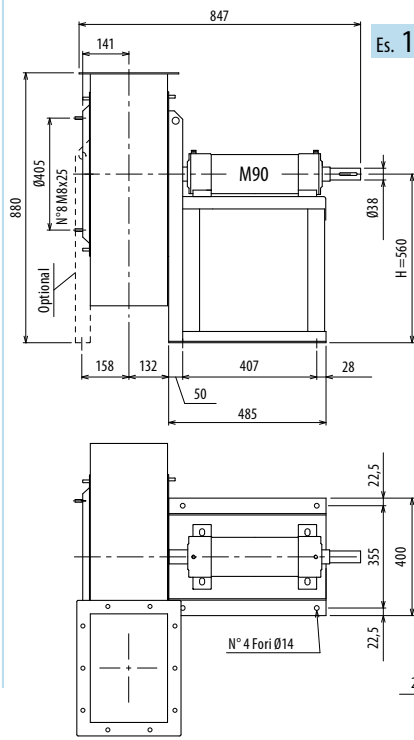
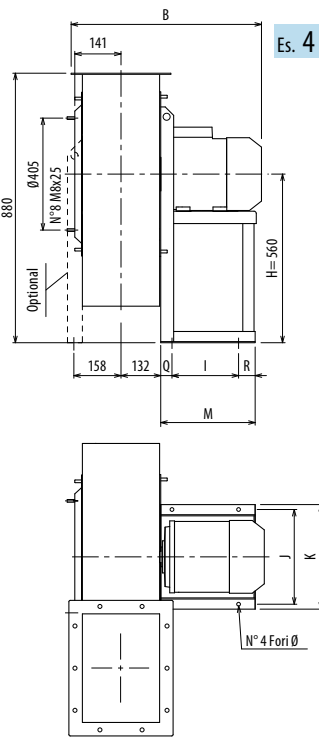
# DIMENSIONI D'INGOMBRO E PESI/CURVE DI FUNZIONAMENTO

■ DIMENSIONS D'ENCOMBREMENT ET POIDS/COURBES DE FONCTIONNEMENT ■ OVERALL DIMENSIONS AND WEIGHT/WORKING CURVES  
 ■ AUSMAßE UND GEWICHTE/FUNKTIONSKURVEN ■ DIMENSIONES QUE OCUPA Y PESOS/CURVAS DE FUNCIONAMIENTO

## PRU450



PRU

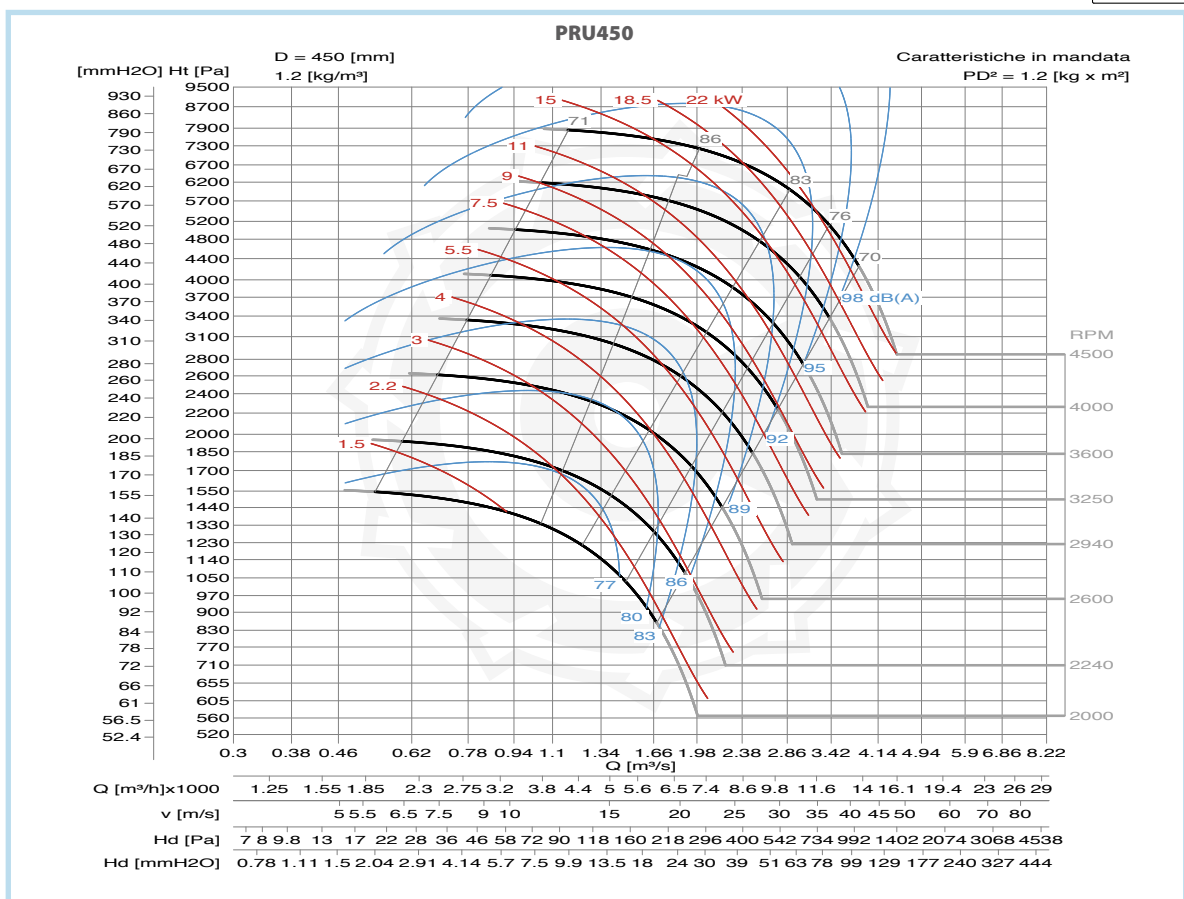
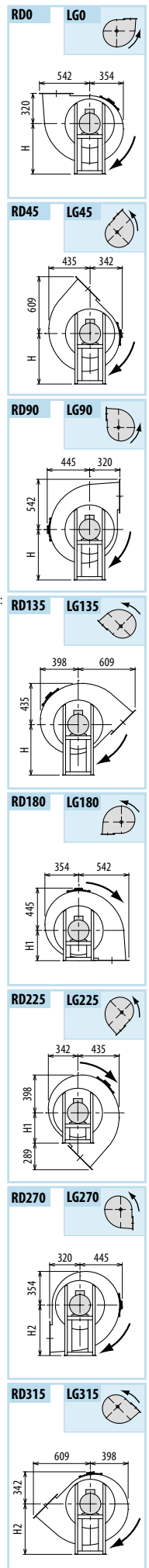
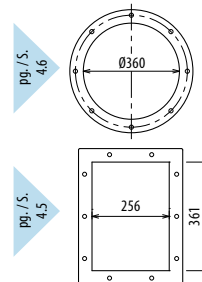


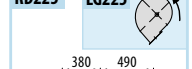
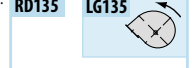
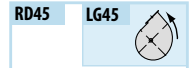
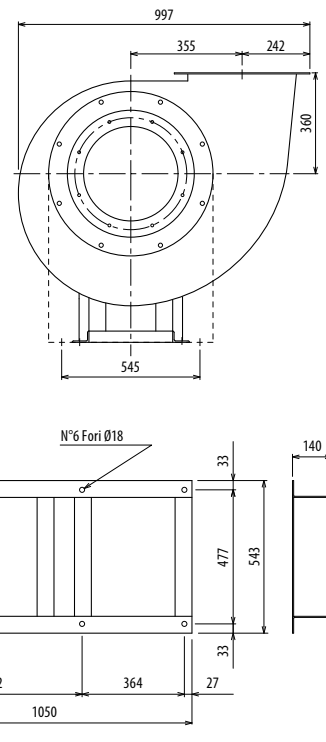
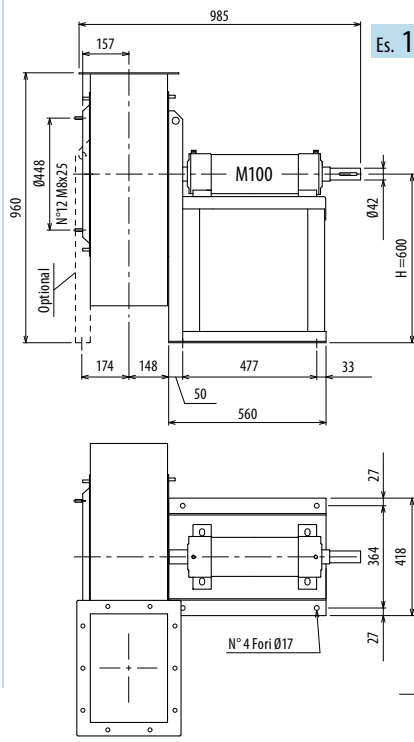
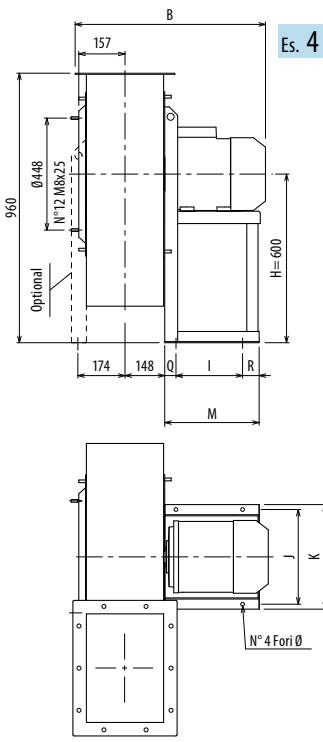
Il ventilatore è orientabile • Peso in tabella comprensivo di motore

- Le ventilateur est orientable
- The fan is revolvable
- Der Ventilator ist drehbar
- El ventilador es orientable
- Further information and cotes:
- Further information and sizes:
- Weitere Infos und Größen:
- Más informaciones y medidas:

TIPO - Type		PESO Weight	PD <sup>2</sup>											
VENTILATORE Fan	MOTORE Motor	Kg	Kgf x m <sup>2</sup>	B	I	H	H1	H2	J	K	M	Q	R	Ø
PRU450/2R	132 SA2	106	1,2	673	237	560	320	560	337	372	336	40	59	12
PRU450/2	132 SA2	107	1,2	673	237	560	320	560	337	372	336	40	59	12
PRU450/2	132 SB2	115	1,2	673	237	560	320	560	337	372	336	40	59	12
PRU450/T		98	1,16			560	320	560						

Ulteriori informazioni e quote:  
 ■ Ulérieures informations et cotes:  
 ■ Further information and sizes:  
 ■ Weitere Infos und Größen:  
 ■ Más informaciones y medidas:





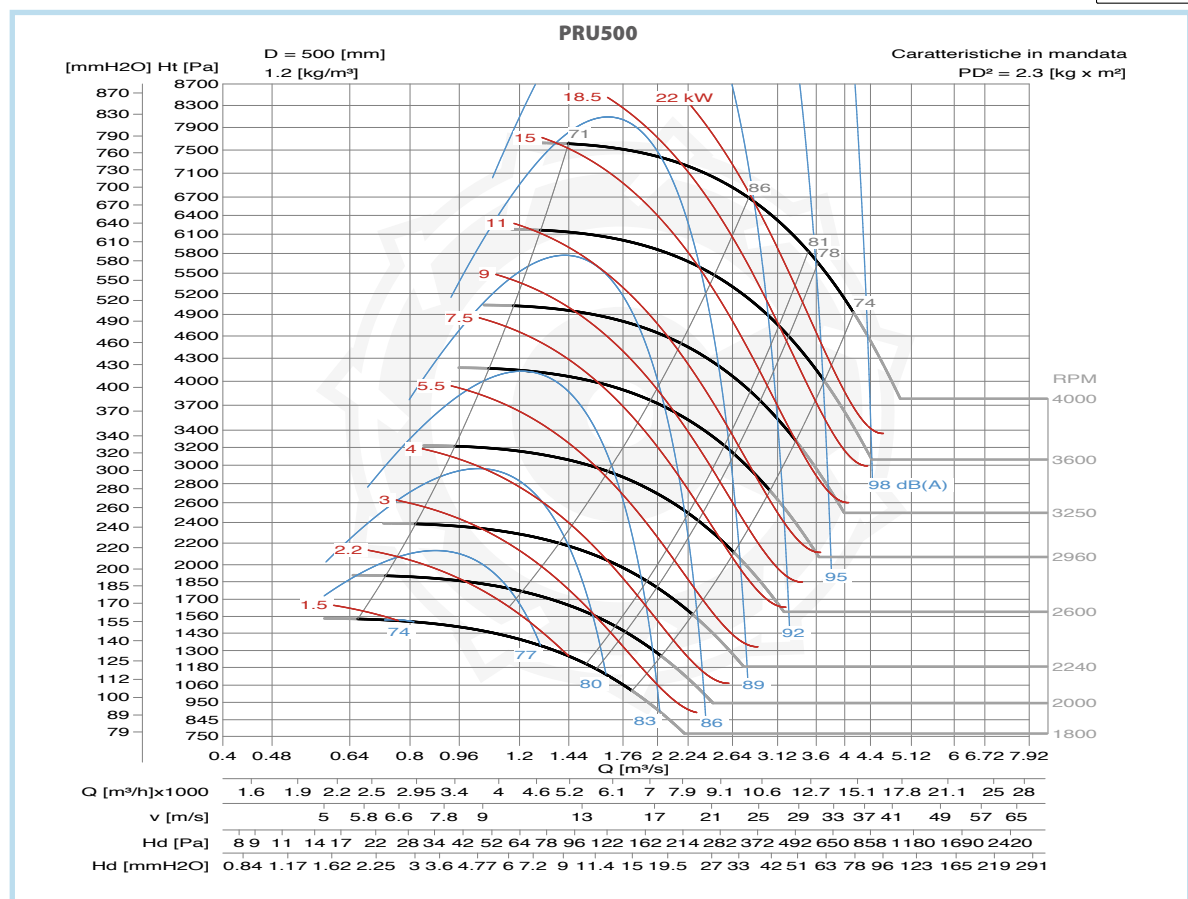
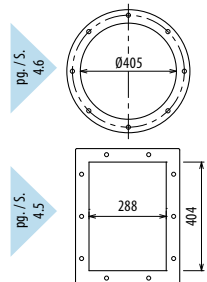
Il ventilatore è orientabile - Peso in tabella comprensivo di motore

- Le ventilatore est orientable
- The fan is revolvable
- Der Ventilator ist drehbar
- El ventilador es orientable
- Le poids dans le tableau inclut le moteur
- The weight indicated in the table includes motor
- Das Gewicht im Tafel schließt den Motor ein
- El peso en la tabla incluye el motor

Ulteriori informazioni e quote:

- Ulérieures informations et cotes:
- Further information and sizes:
- Weitere Infos und Größen:
- Más informaciones y medidas:

TIPO - Type		PESO Weight	PD <sup>2</sup> Kg f x m <sup>2</sup>	B	I	H	H1	H2	J	K	M	Q	R	Ø
VENTILATORE Fan	MOTORE Motor													
PRU500/2R	132 SB2	141	2,1	705	237	600	360	600	337	372	336	40	59	12
PRU500/2	132 M2	149	2,2	705	237	600	360	600	337	372	336	40	59	12
PRU500/2	160 MA2	175	2,2	810	337	600	360	600	395	440	436	50	49	14
PRU500/4	90 S4	100	2,3	613	133	600	360	600	234	260	246	55	58	10
PRU500/T		135	2,20			600	360	600						



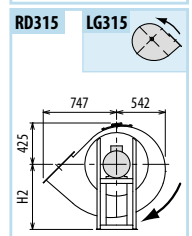
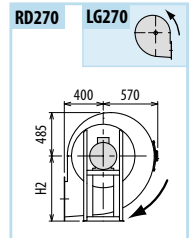
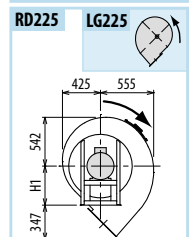
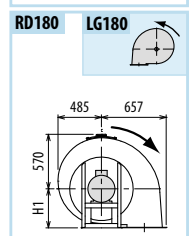
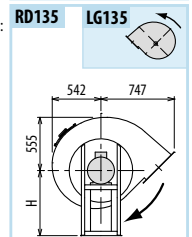
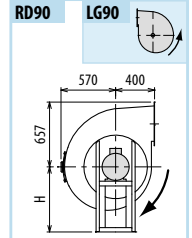
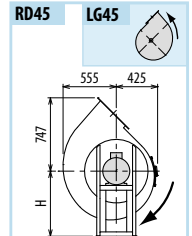
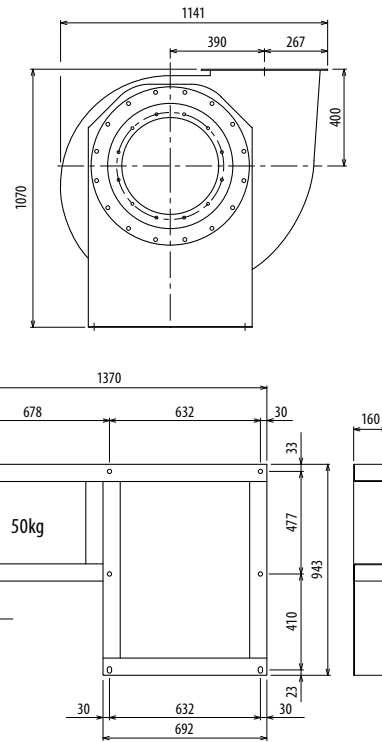
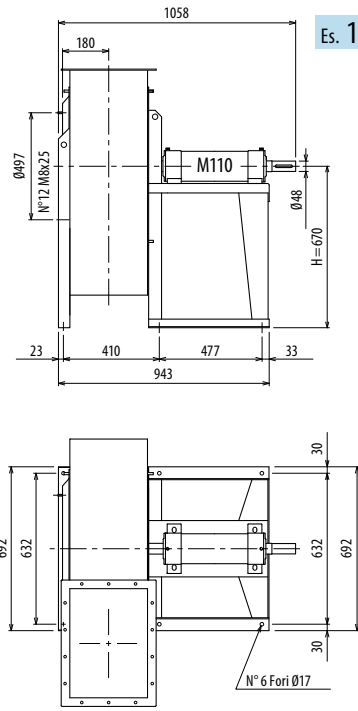
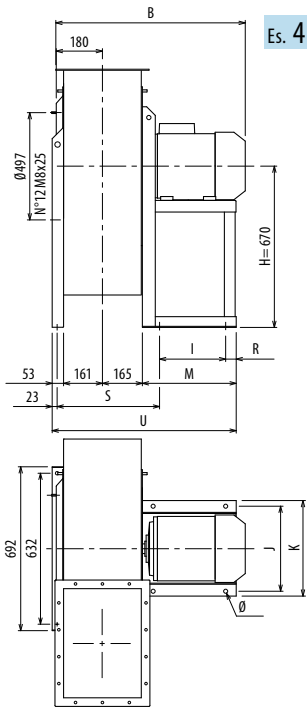
# DIMENSIONI D'INGOMBRO E PESI/CURVE DI FUNZIONAMENTO

■ DIMENSIONS D'ENCOMBREMENT ET POIDS/COURBES DE FONCTIONNEMENT ■ OVERALL DIMENSIONS AND WEIGHT/WORKING CURVES  
 ■ AUSMAßE UND GEWICHTE/FUNKTIONSKURVEN ■ DIMENSIONES QUE OCUPA Y PESOS/CURVAS DE FUNCIONAMIENTO

## PRU560



PRU



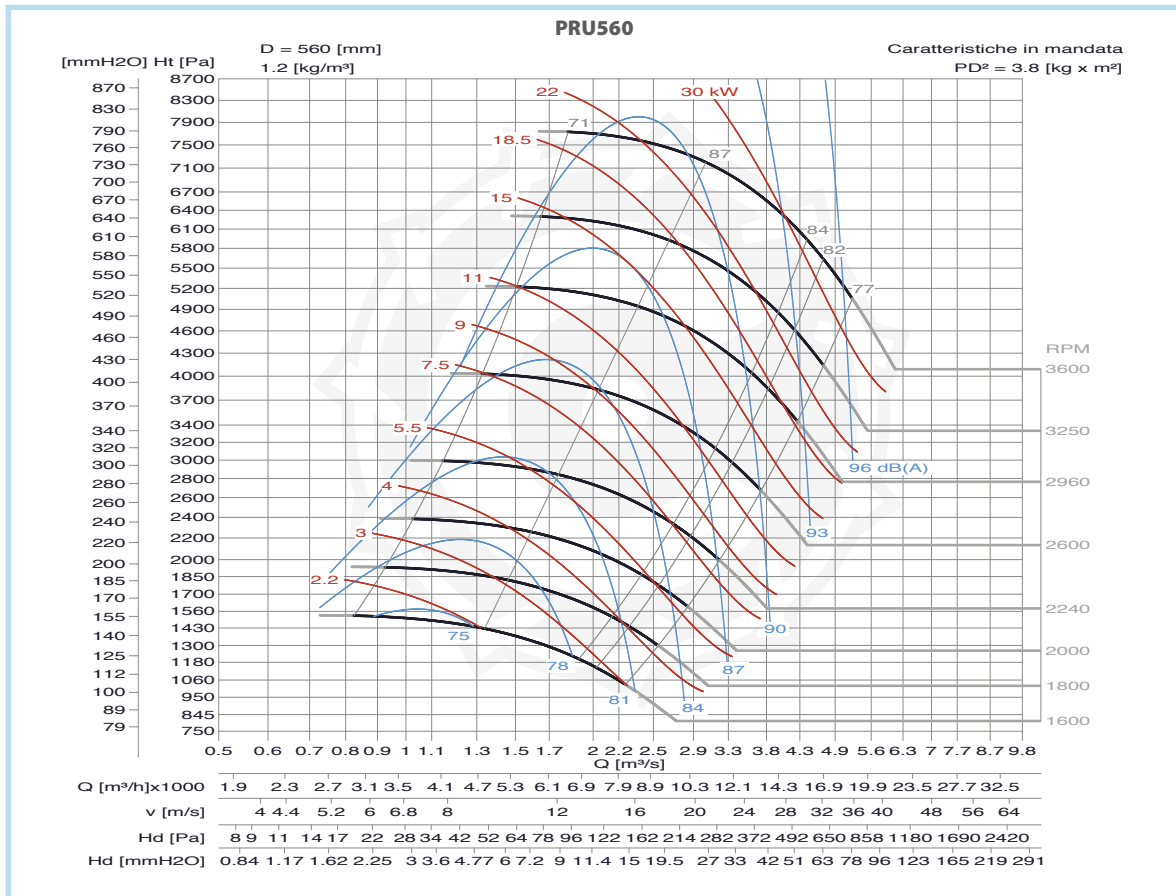
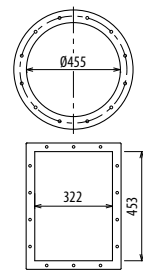
Il ventilatore è orientabile • Peso in tabella comprensivo di motore

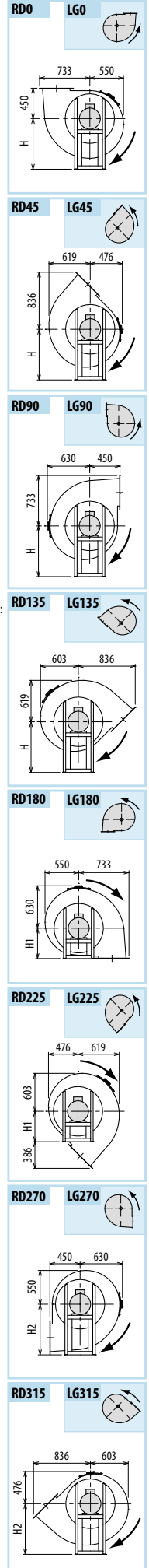
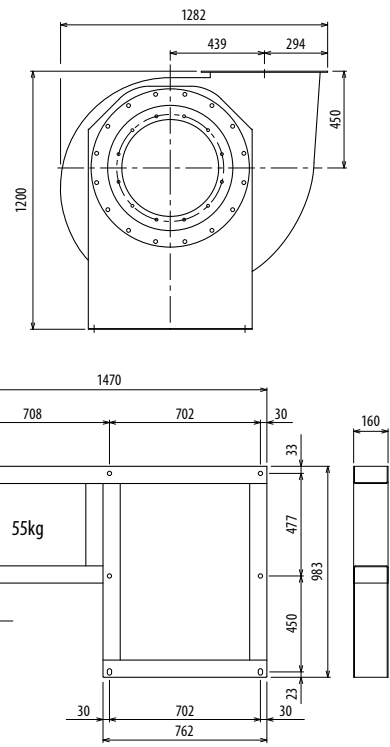
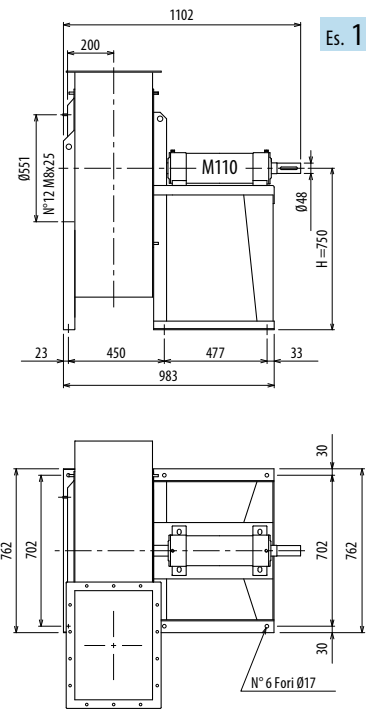
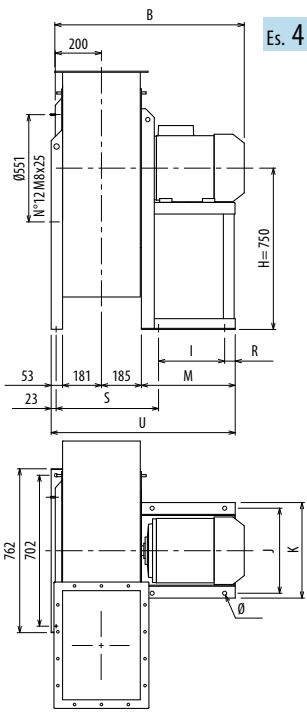
- Le ventilateur est orientable
  - The fan is revolvable
  - Der Ventilator ist drehbar
  - El ventilador es orientable
- Le poids dans le tableau inclut le moteur    The weight indicated in the table includes motor    Das Gewicht im Tafel schließt den Motor ein    El peso en la tabla incluye el motor

Ulteriori informazioni e quote:  
 ■ Ulterérieures informations et cotes:  
 ■ Further information and sizes:  
 ■ Weitere Infos und Größen:  
 ■ Más informaciones y medidas:

TIPO - Type		PESO Weight	PD <sup>2</sup>	B	I	H	H1	H2	J	K	M	R	S	U	Ø
VENTILATORE Fan	MOTORE Motor	Kg	Kgf x m <sup>2</sup>												
PRU560/2R	160 MB2	217	3,4	857	337	670	400	670	395	440	436	49	406	815	14
PRU560/2	160 MB2	218	3,8	857	337	670	400	670	395	440	436	49	406	815	14
PRU560/2	160 L2	228	3,8	857	337	670	400	670	395	440	436	49	406	815	14
PRU560/4	100 L4	143	3,2	691	197	670	400	670	289	324	276	49	386	655	12
PRU560/T		182	3,8			670	400	670							

pg. / s. 4,6  
 pg. / s. 4,5





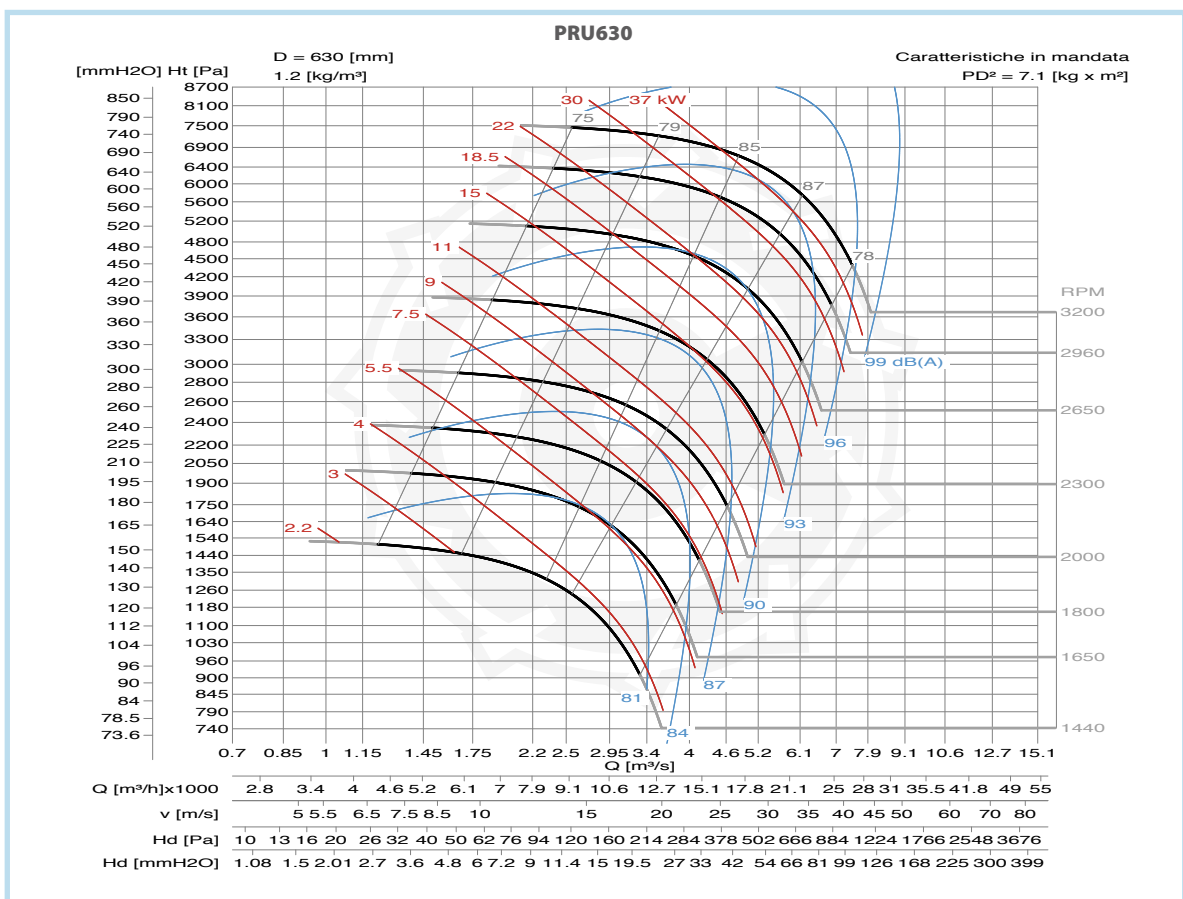
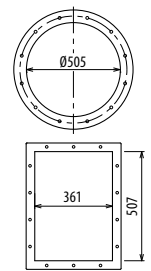
Il ventilatore è orientabile • Peso in tabella comprensivo di motore

- Le ventilateur est orientable
  - The fan is revolvable
  - Der Ventilator ist drehbar
  - El ventilador es orientable
- Le poids dans le tableau inclut le moteur    The weight indicated in the table includes motor    Das Gewicht in Tafel schließt den Motor ein    El peso en la tabla incluye el motor

TIPO - Type		PESO Weight	PD <sup>2</sup>	B	I	H	H1	H2	J	K	M	R	S	U	Ø
VENTILATORE Fan	MOTORE Motor	Kg	Kgf x m <sup>2</sup>												
PRU630/2R	180 M2	375	5,5	1021	357	750	450	750	434	488	460	33	392	805	18
PRU630/2R	200 LA2	438	5,5	1086	381	750	450	750	506	568	500	39	475	918	20
PRU630/2	200 LA2	443	7,1	1086	381	750	450	750	506	568	500	39	475	918	20
PRU630/2	200 LB2	443	7,1	1086	381	750	450	750	506	568	500	39	475	918	20
PRU630/4	112 M4	190	6,6	752	197	750	450	750	289	324	276	49	425	694	12
PRU630/T		218	7,1			750	450	750							

Ulteriori informazioni e quote:  
■ Ulterérieures informations et cotes:  
■ Further information and sizes:  
■ Weitere Infos und Größen:  
■ Más informaciones y medidas:

pg. / s. 4.6  
pg. / s. 4.5





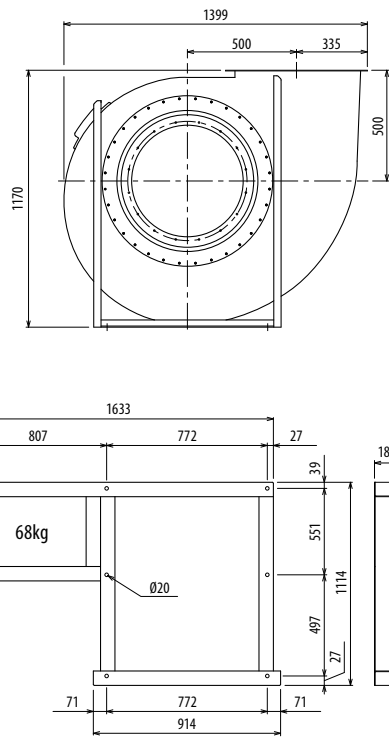
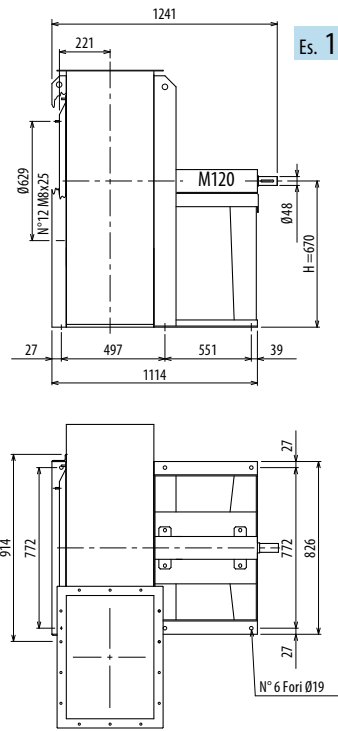
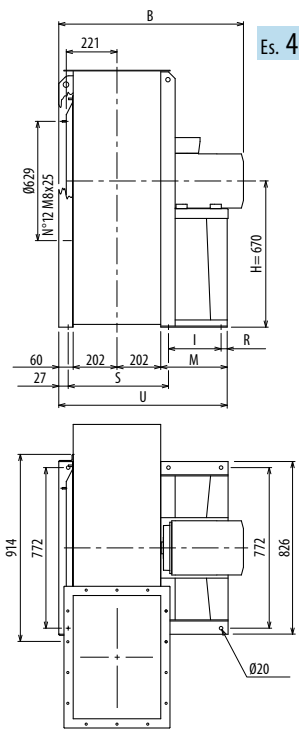
# DIMENSIONI D'INGOMBRO E PESI/CURVE DI FUNZIONAMENTO

■ DIMENSIONS D'ENCOMBREMENT ET POIDS/COURBES DE FONCTIONNEMENT ■ OVERALL DIMENSIONS AND WEIGHT/WORKING CURVES  
 ■ AUSMAßE UND GEWICHTE/FUNKTIONSKURVEN ■ DIMENSIONES QUE OCUPA Y PESOS/CURVAS DE FUNCIONAMIENTO

## PRU710



PRU

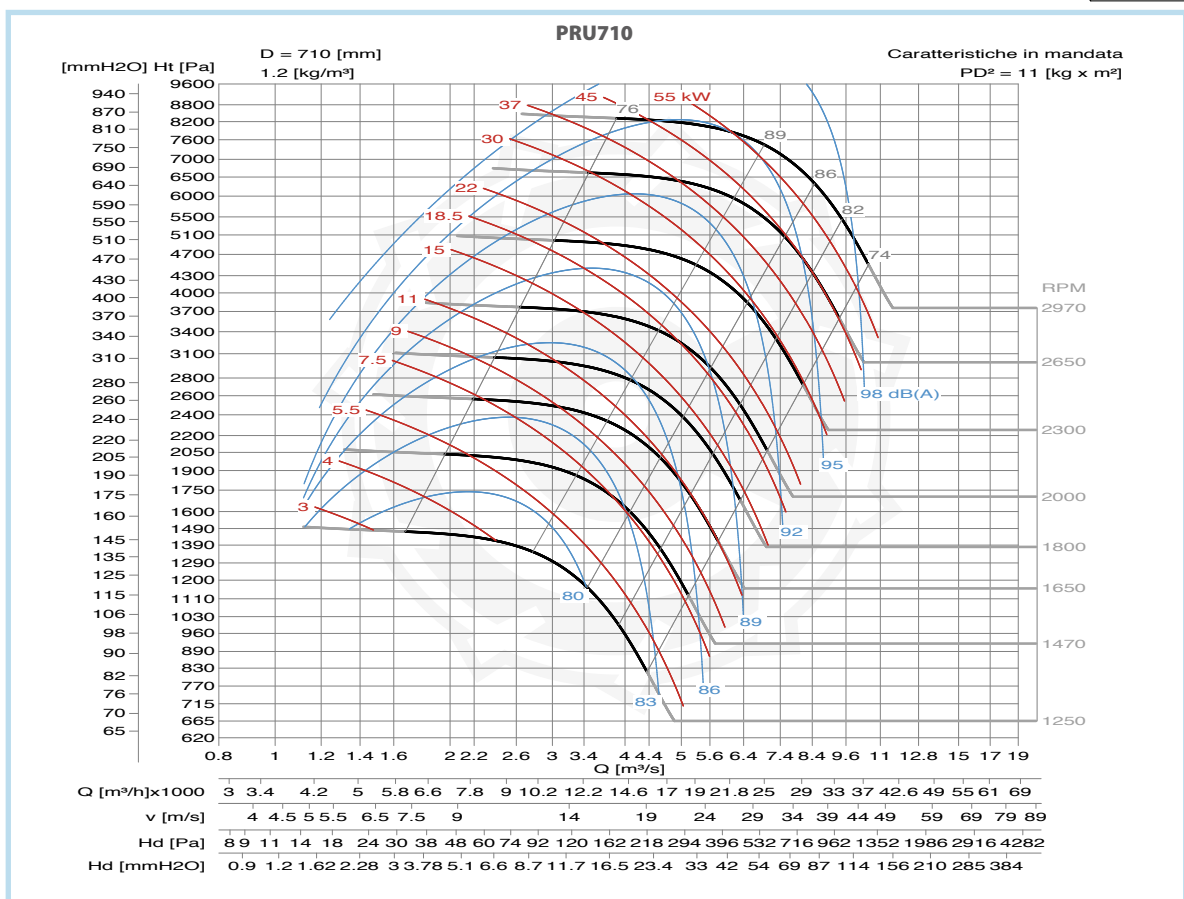
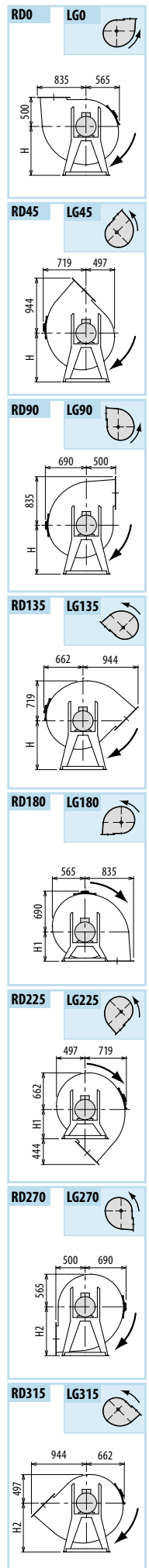
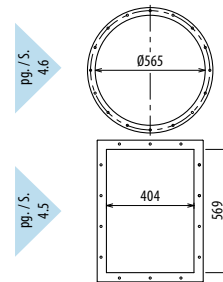


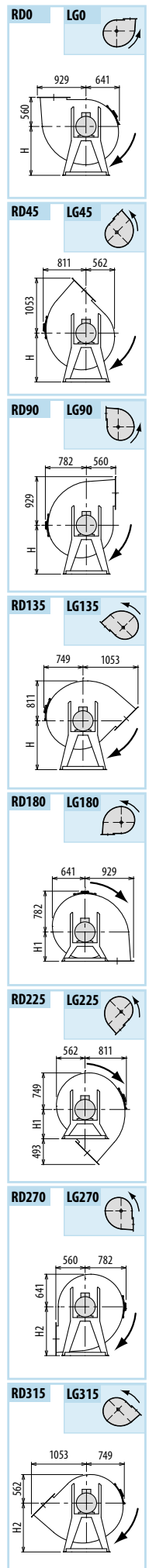
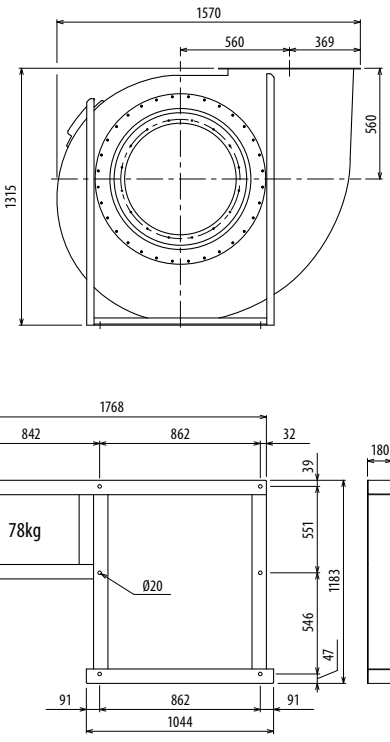
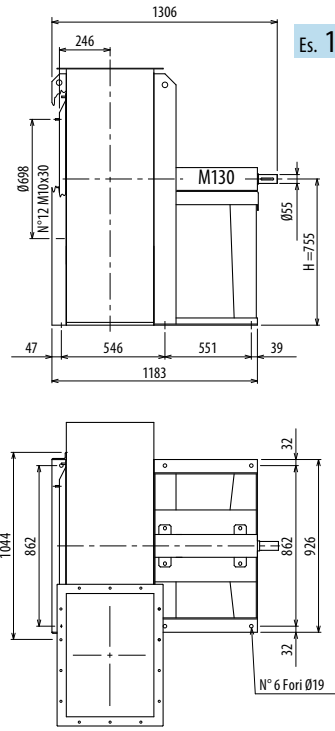
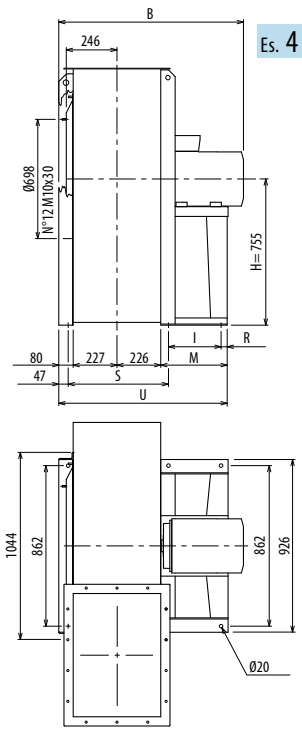
Il ventilatore non è orientabile • Peso in tabella comprensivo di motore

- Le ventilateur n'est pas orientable
  - The fan is not revolvable
  - Der Ventilator ist nicht drehbar
  - El ventilador no es orientable
- Le poids dans le tableau inclut le moteur    The weight indicated in the table includes motor    Das Gewicht im Tafel schließt den Motor ein    El peso en la tabla incluye el motor

Ulteriori informazioni e quote:  
 ■ Ulérieures informations et cotes:  
 ■ Further information and sizes:  
 ■ Weitere Infos und Größen:  
 ■ Más informaciones y medidas:

TIPO - Type		PESO Weight	PD <sup>2</sup>											
VENTILATORE Fan	MOTORE Motor	Kg	Kgf x m <sup>2</sup>	B	I	H	H1	H2	R	S	M	U		
PRU710/2R	225 M2	540	10	1173	441	670	500	850	39	497	540	1004		
PRU710/2R	250 M2	625	10	1281	501	670	500	850	39	497	600	1064		
PRU710/2	250 M2	626	11	1281	501	670	500	850	39	497	600	1064		
PRU710/2	280 S2	760	11	1284	591	670	500	850	39	497	690	1154		
PRU710/4R	132 S4	275	10	837	201	670	500	850	75	497	336	800		
PRU710/4	132 M4	288	11	837	201	670	500	850	75	497	336	800		
PRU710/T		325	11			670	500	850						



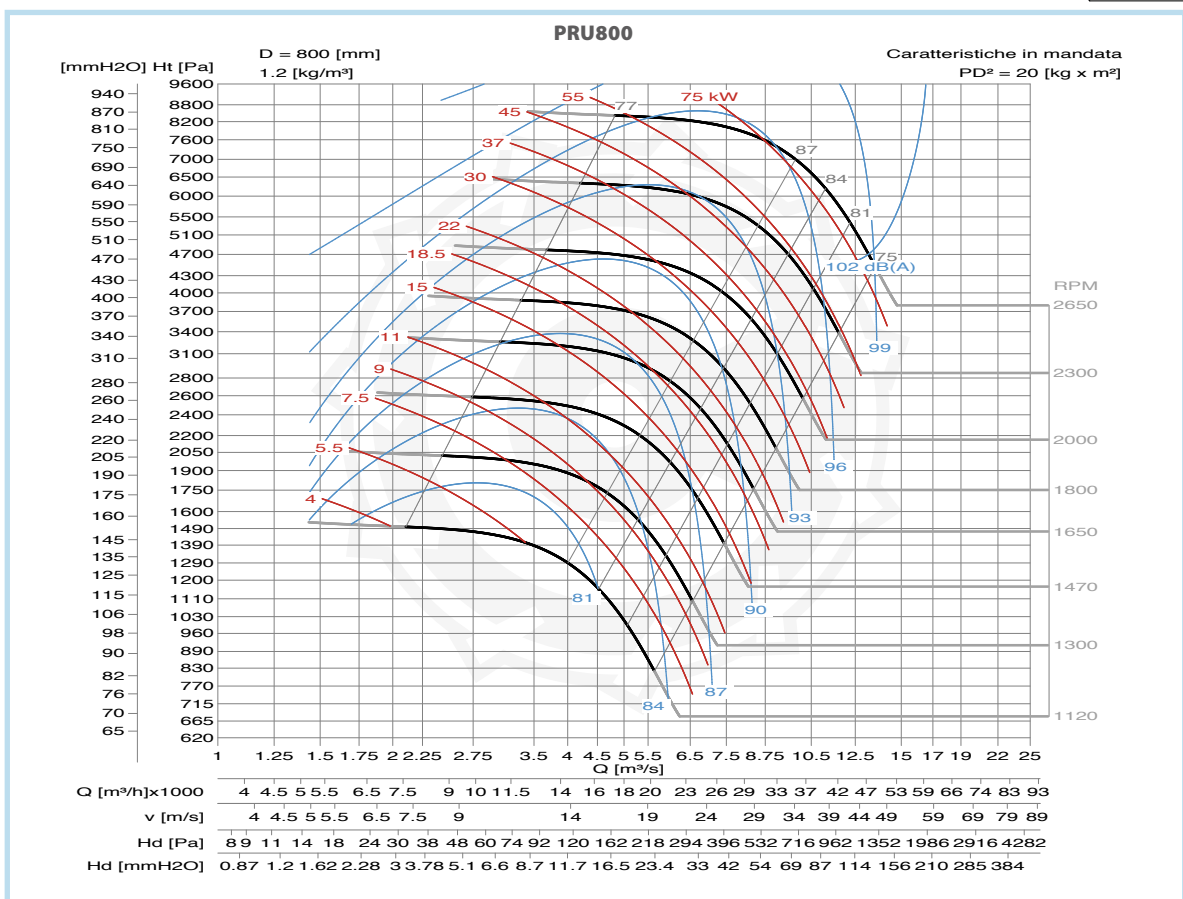
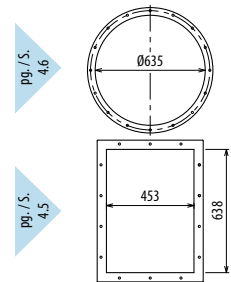


Il ventilatore non è orientabile • Peso in tabella comprensivo di motore

- Le ventilateur n'est pas orientable
  - The fan is not revolvable
  - Der Ventilator ist nicht drehbar
  - El ventilador no es orientable
- Le poids dans le tableau inclut le moteur    The weight indicated in the table includes motor    Das Gewicht im Tafel schließt den Motor ein    El peso en la tabla incluye el motor

Ulteriori informazioni e quote:  
 ■ Ulérieures informations et cotes:  
 ■ Further information and sizes:  
 ■ Weitere Infos und Größen:  
 ■ Más informaciones y medidas:

TIPO - Type		PESO Weight Kg	PD <sup>2</sup> Kgf x m <sup>2</sup>	B	I	H	H1	H2	R	S	M	U
VENTILATORE Fan	MOTORE Motor											
PRU800/2R	280 M2	904	18	1353	591	755	560	950	39	546	690	1223
PRU800/2	315 S2	1046	20	1565	675	755	560	950	65	546	800	1333
PRU800/4R	160 M4	418	18	1011	315	755	560	950	60	546	436	968
PRU800/4	160 L4	432	20	1011	315	755	560	950	60	546	436	968
PRU800/6	132 M6	390	19	906	201	755	560	950	75	546	336	869
PRU800/T		400	20			755	560	950				



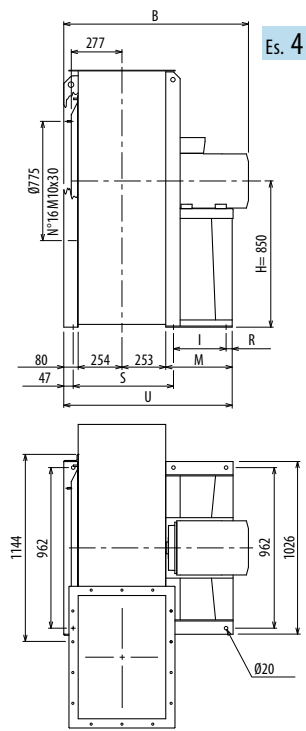
# DIMENSIONI D'INGOMBRO E PESI/CURVE DI FUNZIONAMENTO

■ DIMENSIONS D'ENCOMBREMENT ET POIDS/COURBES DE FONCTIONNEMENT ■ OVERALL DIMENSIONS AND WEIGHT/WORKING CURVES  
 ■ AUSMAßE UND GEWICHTE/FUNKTIONSKURVEN ■ DIMENSIONES QUE OCUPA Y PESOS/CURVAS DE FUNCIONAMIENTO

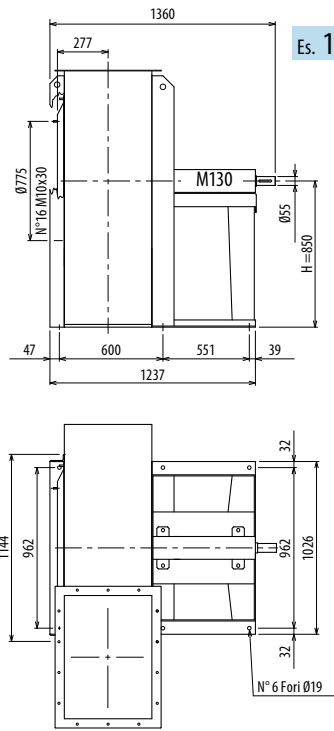
## PRU900



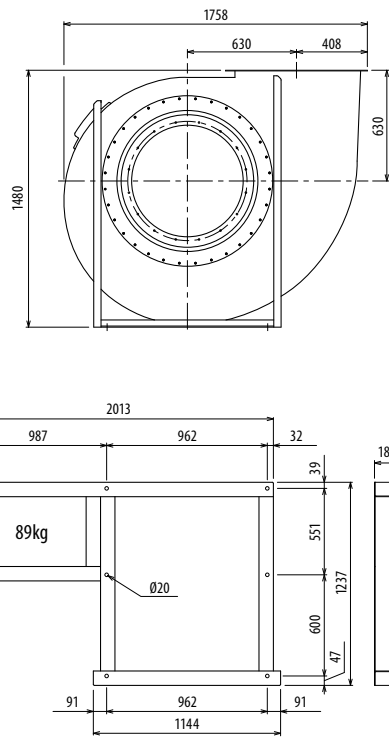
PRU



Es. 4



Es. 1



Il ventilatore non è orientabile • Peso in tabella comprensivo di motore

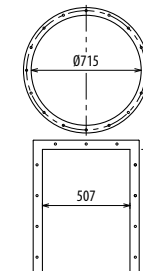
- Le ventilateur n'est pas orientable
  - The fan is not revolvable
  - Der Ventilator ist nicht drehbar
  - El ventilador no es orientable
- Le poids dans le tableau inclut le moteur    The weight indicated in the table includes motor    Das Gewicht im Tafel schließt den Motor ein    El peso en la tabla incluye el motor

Ulteriori informazioni e quote:  
 ■ Ulérieures informations et cotes:  
 ■ Further information and sizes:  
 ■ Weitere Infos und Größen:  
 ■ Más informaciones y medidas:

TIPO - Type		PESO Weight	PD <sup>2</sup>											
VENTILATORE Fan	MOTORE Motor	Kg	Kgf x m <sup>2</sup>	B	I	H	H1	H2	R	S	M	U		
PRU900/4R	180 M4	590	34	1146	361	850	630	1060	39	600	460	1047		
PRU900/4	200 L4	687	37	1254	401	850	630	1060	39	600	500	1087		
PRU900/6	160 M6	504	36	1065	316	850	630	1060	60	600	436	1023		
PRU900/T		485	37			850	630	1060						

pg. / s. 4/6

pg. / s. 4/5



**RD0 LG0**

**RD45 LG45**

**RD90 LG90**

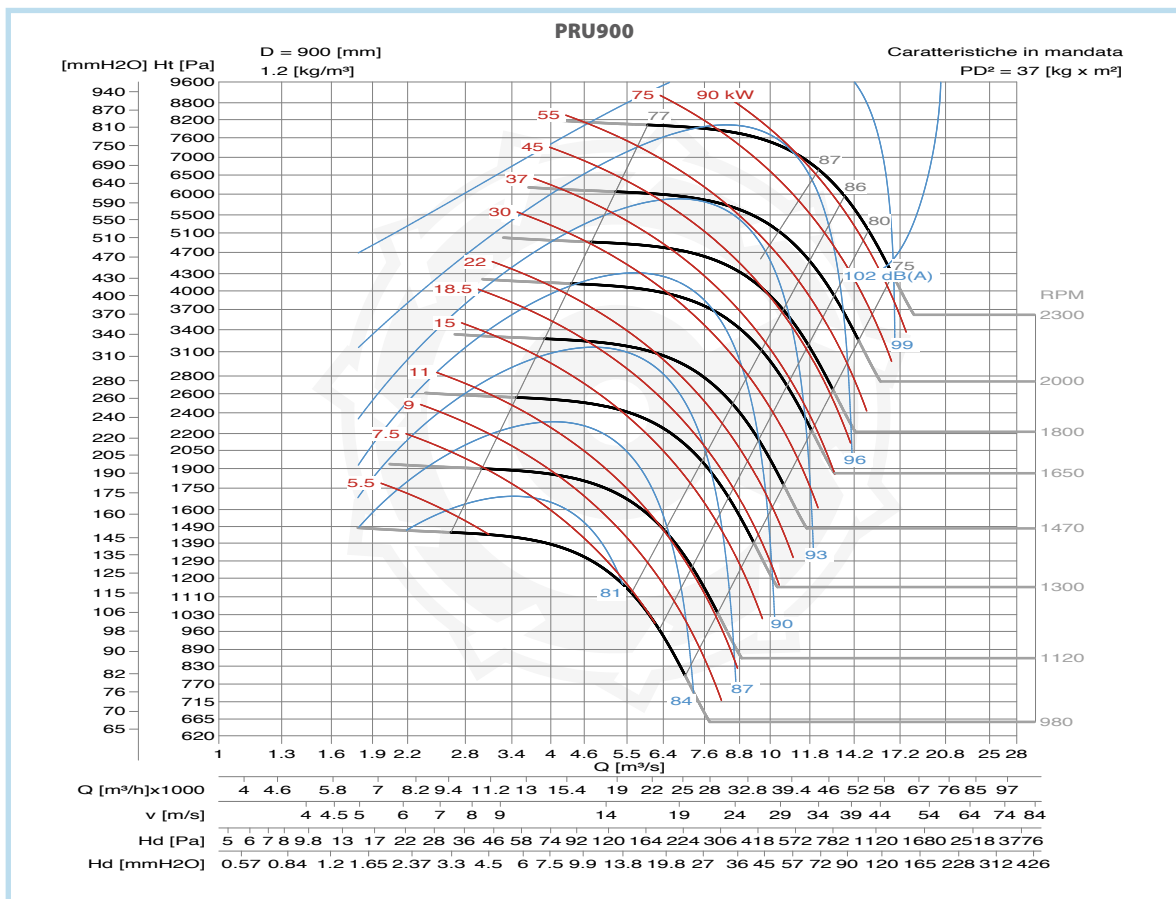
**RD135 LG135**

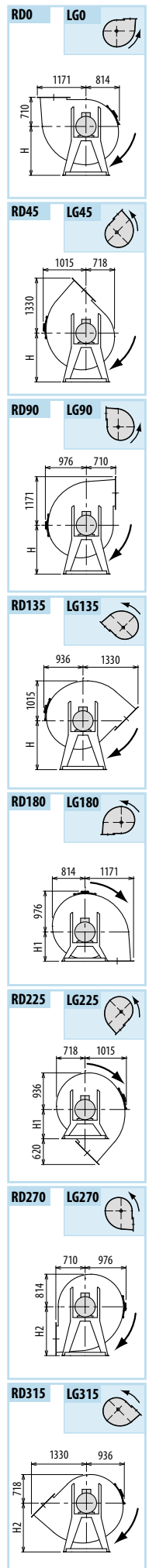
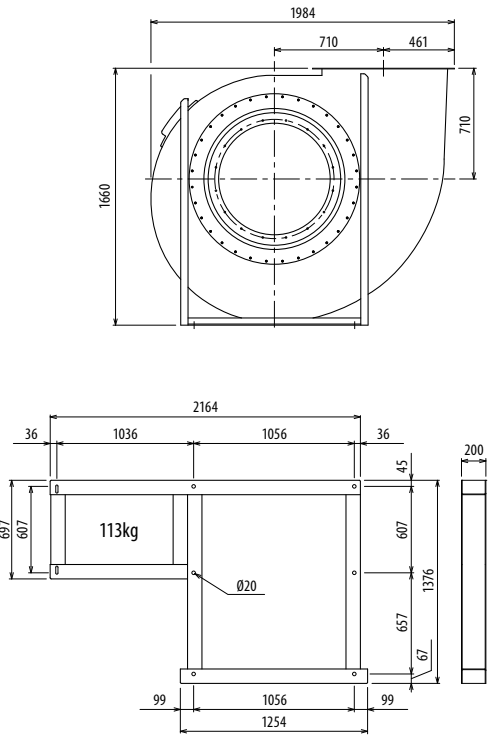
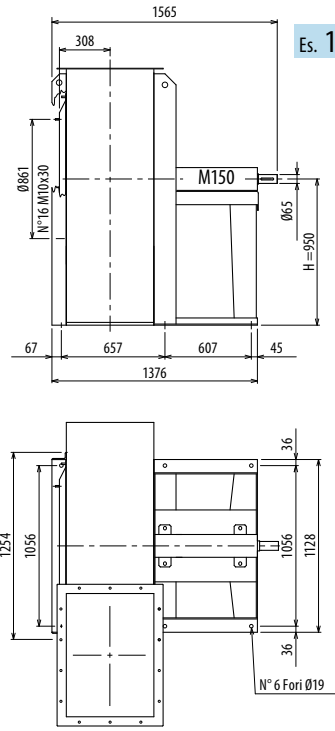
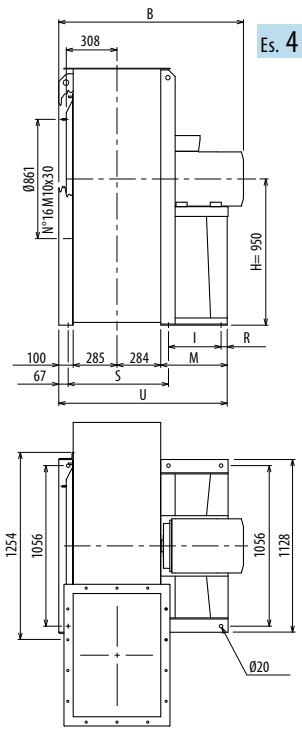
**RD180 LG180**

**RD225 LG225**

**RD270 LG270**

**RD315 LG315**



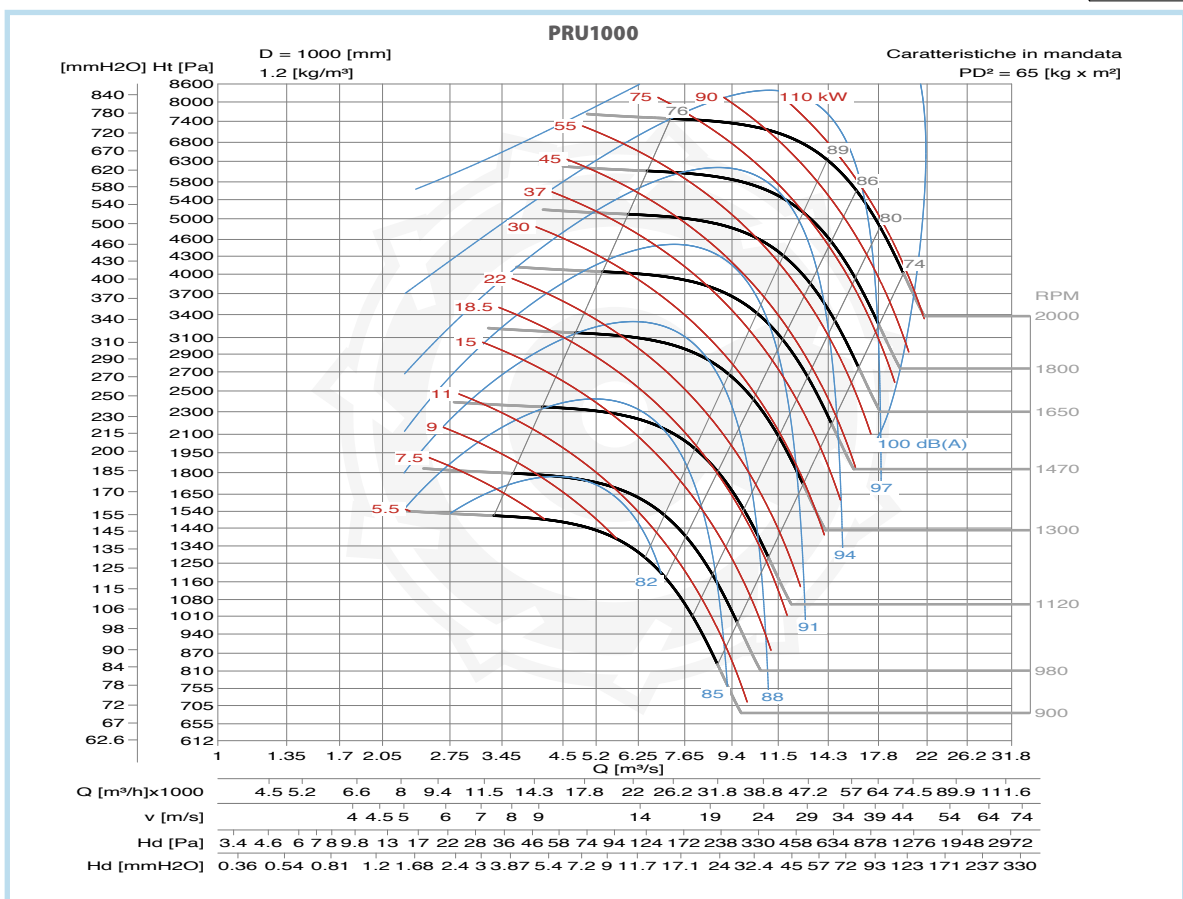
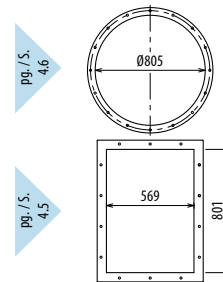


Il ventilatore non è orientabile • Peso in tabella comprensivo di motore

- Le ventilateur n'est pas orientable
  - The fan is not revolvable
  - Der Ventilator ist nicht drehbar
  - El ventilador no es orientable
- Le poids dans le tableau inclut le moteur    The weight indicated in the table includes motor    Das Gewicht im Tafel schließt den Motor ein    El peso en la tabla incluye el motor

Ulteriori informazioni e quote:  
 ■ Ulteriori informazioni e cotes:  
 ■ Further information and sizes:  
 ■ Weitere Infos und Größen:  
 ■ Más informaciones y medidas:

TIPO - Type		PESO Weight Kg	PD <sup>2</sup> Kg x m <sup>2</sup>	B	I	H	H1	H2	R	S	M	U
VENTILATORE Fan	MOTORE Motor											
PRU1000/4R	225 S4	933	60	1318	440	950	710	1180	45	657	540	1209
PRU1000/4	225 M4	975	65	1378	440	950	710	1180	45	657	540	1209
PRU1000/6R	160 L6	684	58	1147	315	950	710	1180	66	657	436	1105
PRU1000/6	180 L6	759	62	1279	360	950	710	1180	45	657	460	1129
PRU1000/T		710	65			950	710	1180				



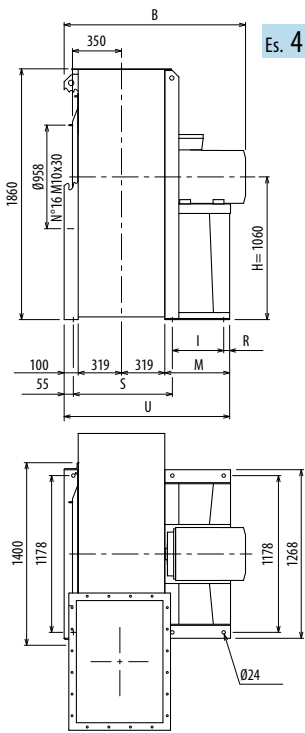
# DIMENSIONI D'INGOMBRO E PESI/CURVE DI FUNZIONAMENTO

■ DIMENSIONS D'ENCOMBREMENT ET POIDS/COURBES DE FONCTIONNEMENT ■ OVERALL DIMENSIONS AND WEIGHT/WORKING CURVES  
 ■ AUSMAßE UND GEWICHTE/FUNKTIONSKURVEN ■ DIMENSIONES QUE OCUPA Y PESOS/CURVAS DE FUNCIONAMIENTO

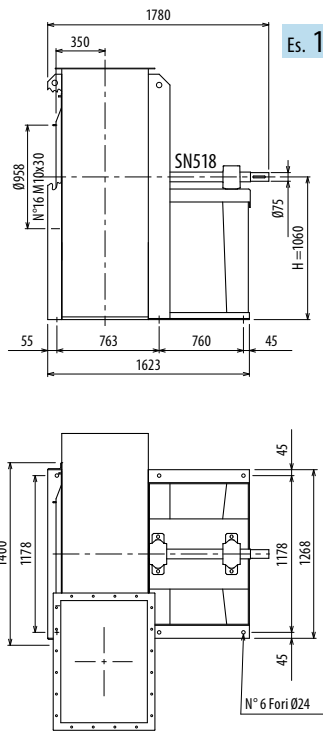
## PRU1120



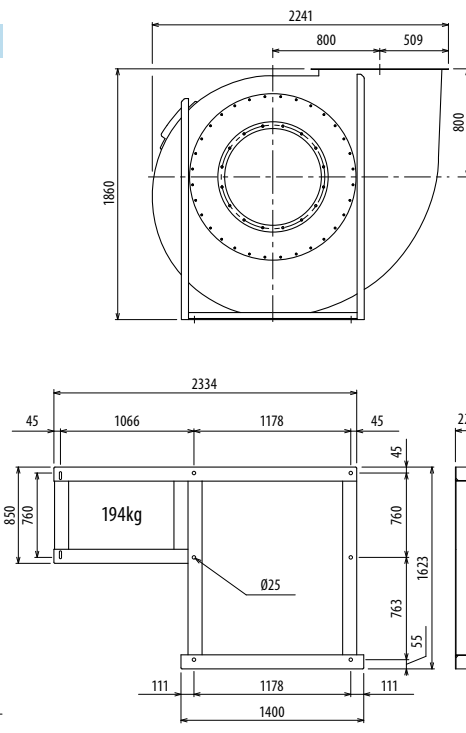
PRU



Es. 4



Es. 1

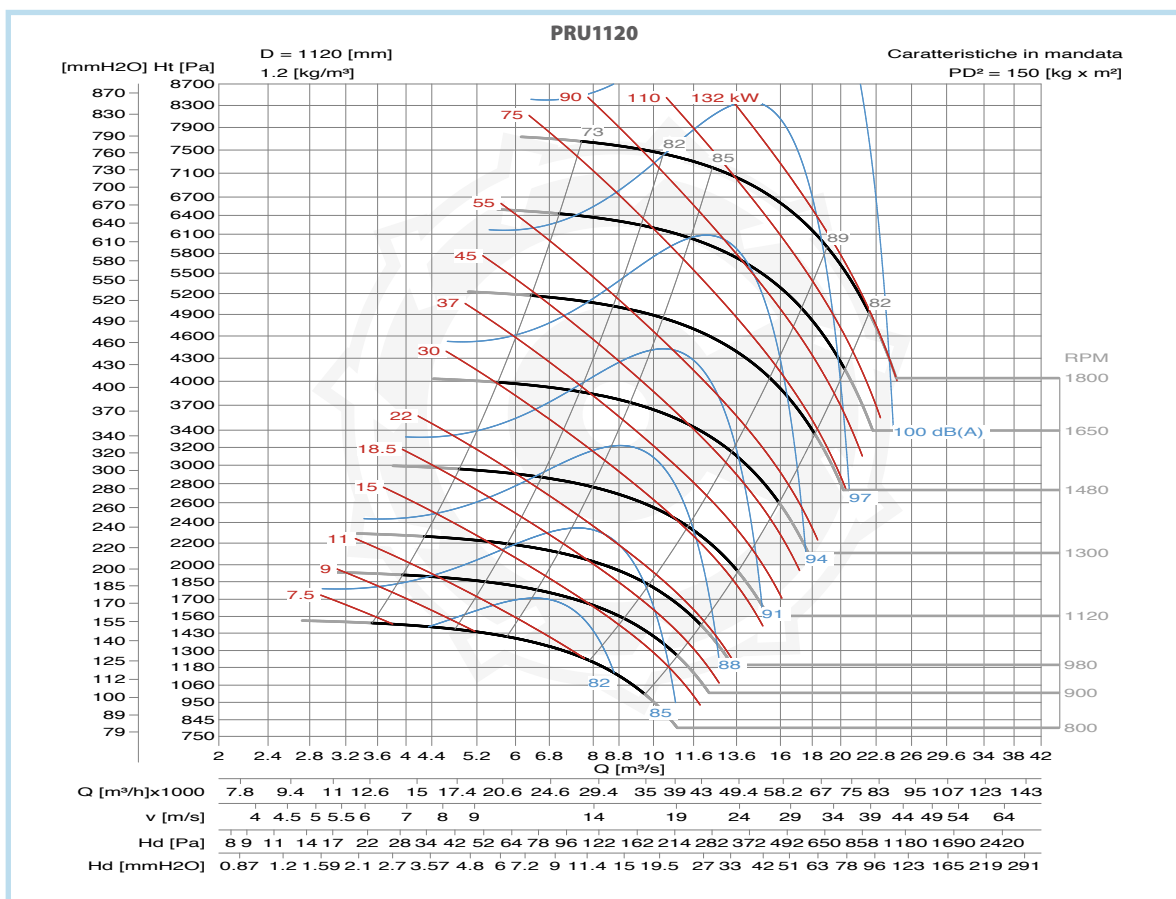
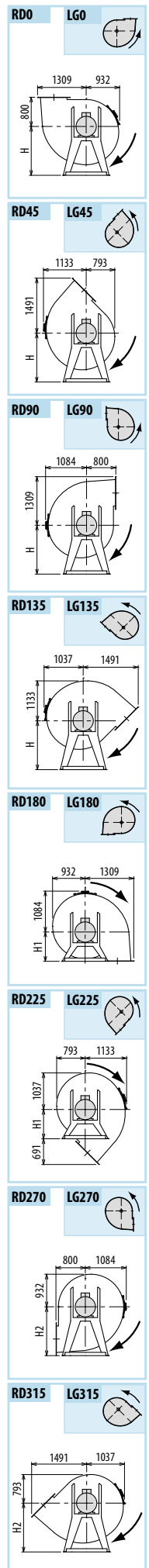
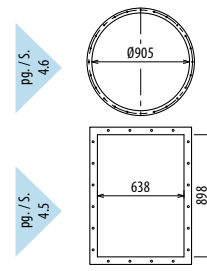


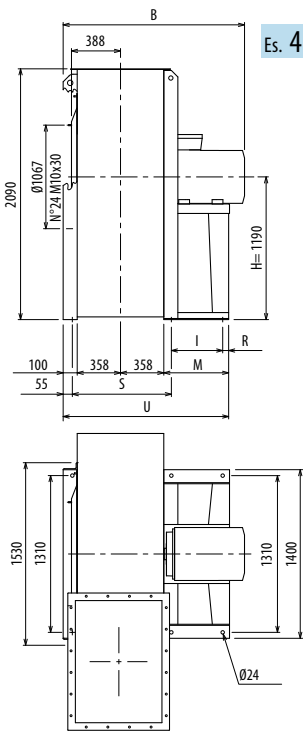
Il ventilatore non è orientabile • Peso in tabella comprensivo di motore

- Le ventilateur n'est pas orientable
  - The fan is not revolvable
  - Der Ventilator ist nicht drehbar
  - El ventilador no es orientable
- Le poids dans le tableau inclut le moteur    The weight indicated in the table includes motor    Gewichtsangabe in Tabelle inkl. Motor    El peso en la tabla incluye el motor

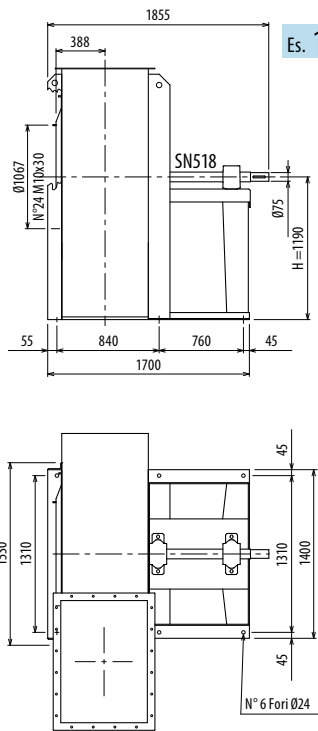
Ulteriori informazioni e quote:  
 ■ Ulteriori informazioni e cotes:  
 ■ Further information and sizes:  
 ■ Weitere Infos und Größen:  
 ■ Más informaciones y medidas:

TIPO - Type		PESO Weight	PD <sup>2</sup>											
VENTILATORE Fan	MOTORE Motor	Kg	Kgf x m <sup>2</sup>	B	I	H	H1	H2	R	S	M	U		
PRU1120/4R	250 M4	1210	140	1555	475	1060	800	1320	45	763	600	1338		
PRU1120/4	280 S4	1390	150	1558	565	1060	800	1320	45	763	690	1428		
PRU1120/6R	200A L6	935	135	1405	375	1060	800	1320	45	763	500	1238		
PRU1120/6	200B L6	956	145	1405	375	1060	800	1320	45	763	500	1238		
PRU1120/T		1000	150			1060	800	1320						

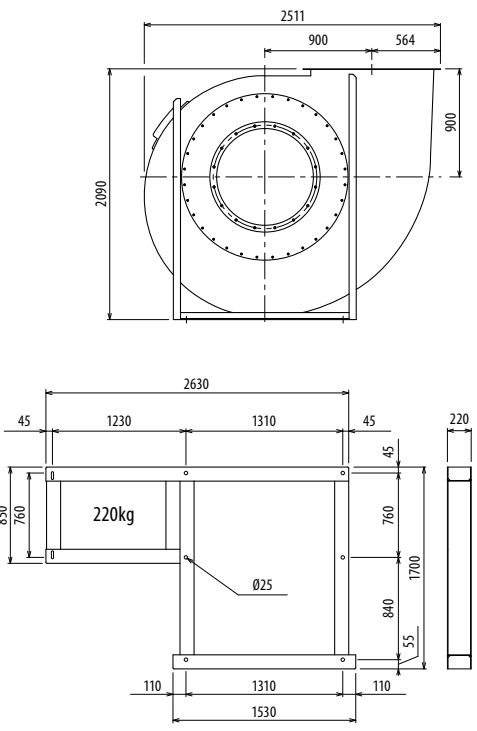




Es. 4



Es. 1

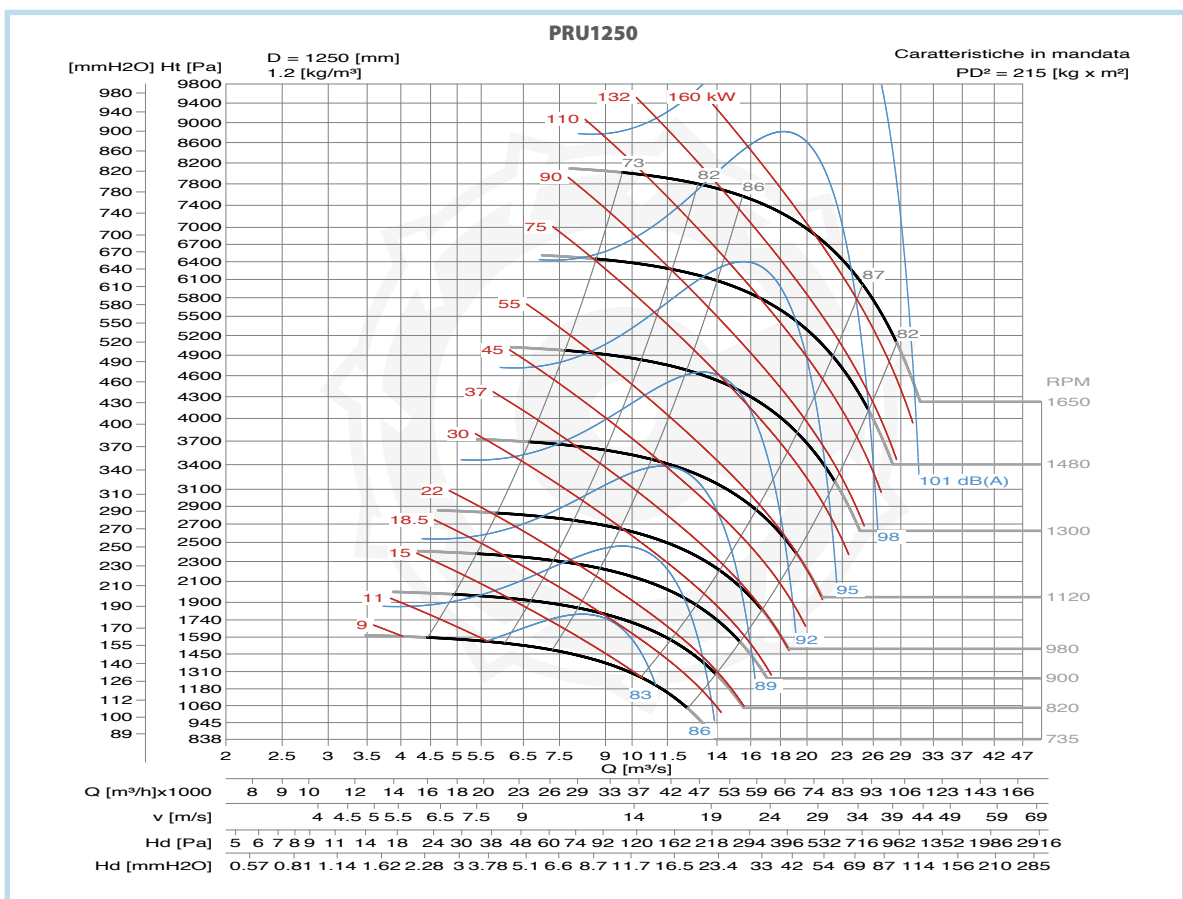
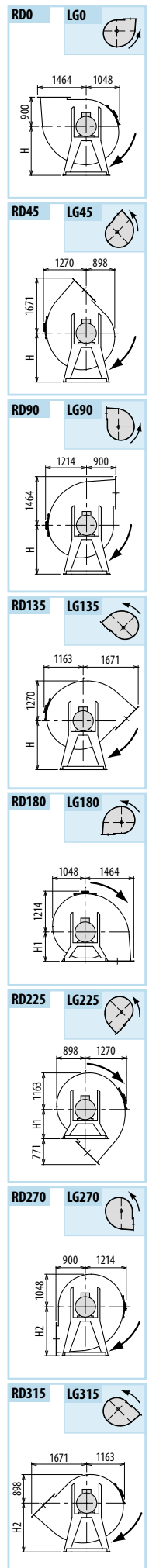
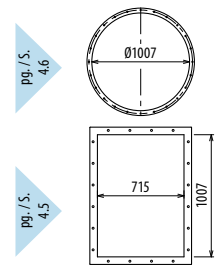


Il ventilatore non è orientabile • Peso in tabella comprensivo di motore

- Le ventilateur n'est pas orientable
  - The fan is not revolvable
  - Der Ventilator ist nicht drehbar
  - El ventilador no es orientable
- Le poids dans le tableau inclut le moteur    The weight indicated in the table includes motor    Gewichtsangabe in Tabelle inkl. Motor    El peso en la tabla incluye el motor

Ulteriori informazioni e quote:  
■ Ulérieures informations et cotes:  
■ Further information and sizes:  
■ Weitere Infos und Größen:  
■ Más informaciones y medidas:

TIPO - Type		PESO Weight Kg	PD <sup>2</sup> Kgf x m <sup>2</sup>	B	I	H	H1	H2	R	S	M	U
VENTILATORE Fan	MOTORE Motor											
PRU1250/4R	315 S4	1840	210	1847	675	1190	900	1500	45	840	800	1615
PRU1250/4	315 M4	1875	215	1847	675	1190	900	1500	45	840	800	1615
PRU1250/6R	225 M6	1283	205	1524	415	1190	900	1500	45	840	540	1355
PRU1250/6	250 M6	1378	210	1632	475	1190	900	1500	45	840	600	1415
PRU1250/T		1145	214			1190	900	1500				



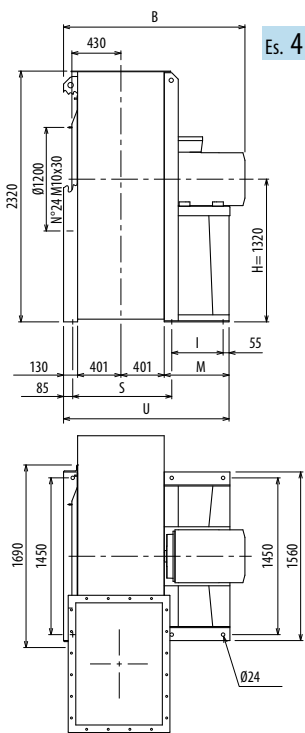
# DIMENSIONI D'INGOMBRO E PESI/CURVE DI FUNZIONAMENTO

■ DIMENSIONS D'ENCOMBREMENT ET POIDS/COURBES DE FONCTIONNEMENT ■ OVERALL DIMENSIONS AND WEIGHT/WORKING CURVES  
 ■ AUSMAßE UND GEWICHTE/FUNKTIONSKURVEN ■ DIMENSIONES QUE OCUPA Y PESOS/CURVAS DE FUNCIONAMIENTO

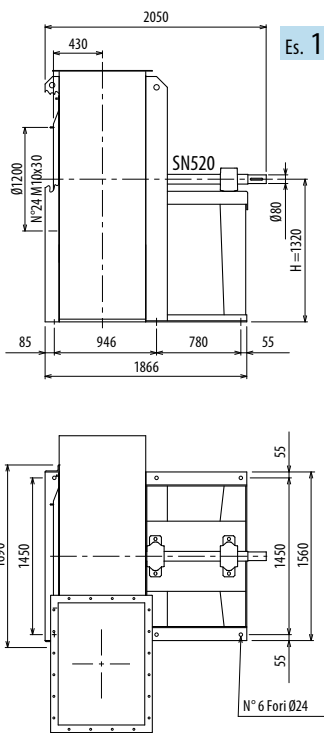
## PRU1400



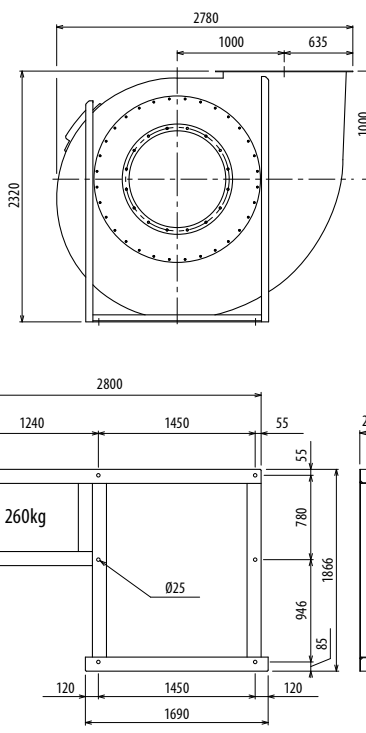
PRU



Es. 4



Es. 1

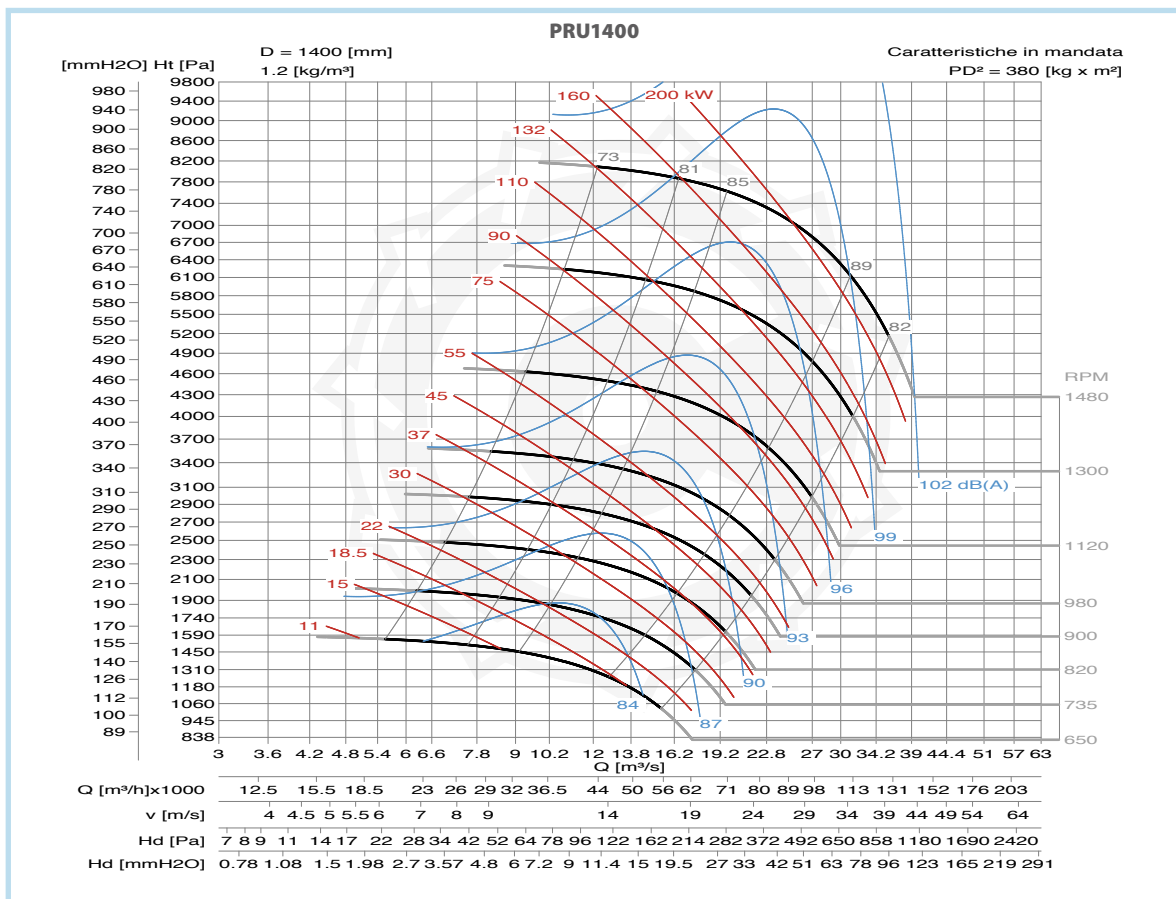
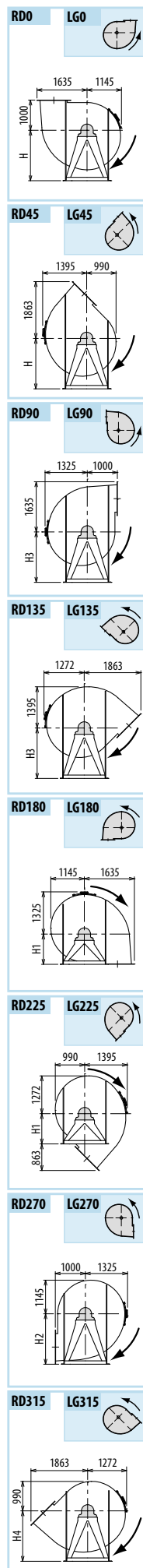
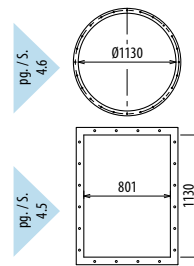


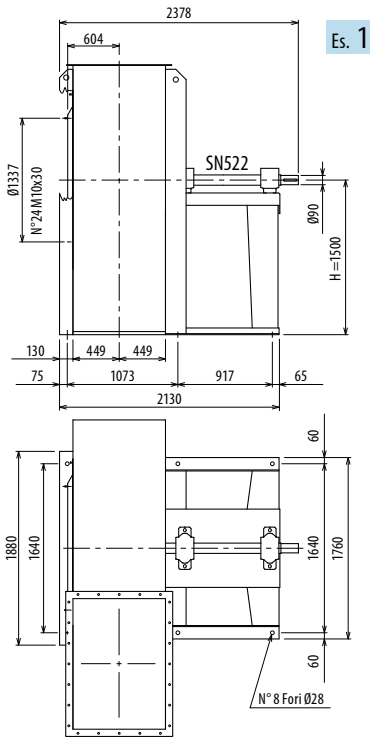
Il ventilatore non è orientabile • Peso in tabella comprensivo di motore

- Le ventilateur n'est pas orientable
  - The fan is not revolvable
  - Der Ventilator ist nicht drehbar
  - El ventilador no es orientable
- Le poids dans le tableau inclut le moteur    The weight indicated in the table includes motor    Das Gewicht im Tafel schließt den Motor ein    El peso en la tabla incluye el motor

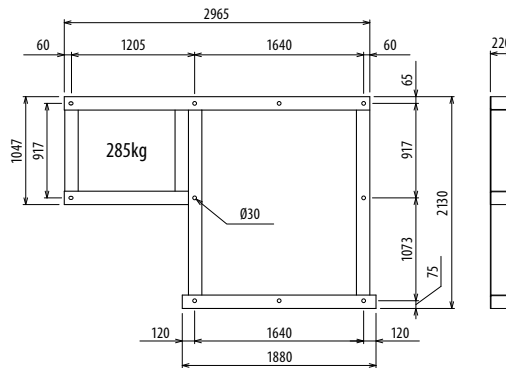
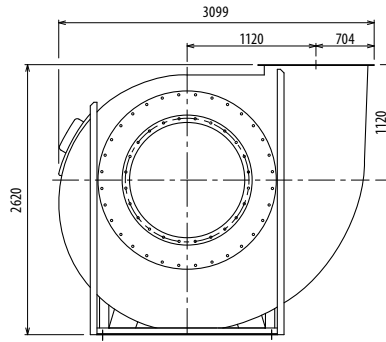
Ulteriori informazioni e quote:  
 ■ Ulteriori informazioni et cotes:  
 ■ Further information and sizes:  
 ■ Weitere Infos und Größen:  
 ■ Más informaciones y medidas:

TIPO - Type		PESO Weight	PD <sup>2</sup>	B	I	H	H1	H2	H3	H4	M	S	U
VENTILATORE Fan	MOTORE Motor	Kg	Kgf x m <sup>2</sup>										
PRU1400/4R	315 LB4	2336	280	1963	645	1320	1000	1700	1320	1700	800	946	1731
PRU1400/4	315 4	2336	380	1963	645	1320	1000	1700	1320	1700	800	946	1731
PRU1400/6R	280 S6	2150	280	1751	535	1320	1000	1700	1320	1700	690	946	1621
PRU1400/6	315 S6	2336	380	1963	645	1320	1000	1700	1320	1700	800	946	1731
PRU1400/T		1740	380			1320	1000	1700	1120	1500			





Es. 1



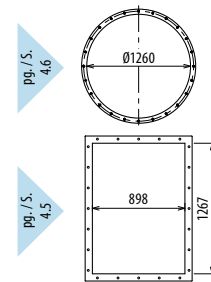
Il ventilatore non è orientabile • Peso in tabella comprensivo di motore

- Le ventilateur n'est pas orientable
  - The fan is not revolvable
  - Der Ventilator ist nicht drehbar
  - El ventilador no es orientable
- Le poids dans le tableau inclut le moteur    The weight indicated in the table includes motor    Das Gewicht im Tafel schließt den Motor ein    El peso en la tabla incluye el motor

Ulteriori informazioni e quote:

- Ulérieures informations et cotes:
- Further information and sizes:
- Weitere Infos und Größen:
- Más informaciones y medidas:

TIPO - Type		PESO Weight Kg	PD <sup>2</sup> Kgf x m <sup>2</sup>												
VENTILATORE Fan	MOTORE Motor			B	I	H	H1	H2	H3	H4	M				
PRU1600/T		2462	680			1500	1120	1900	1250	1600					



**RD0 LG0**

**RD45 LG45**

**RD90 LG90**

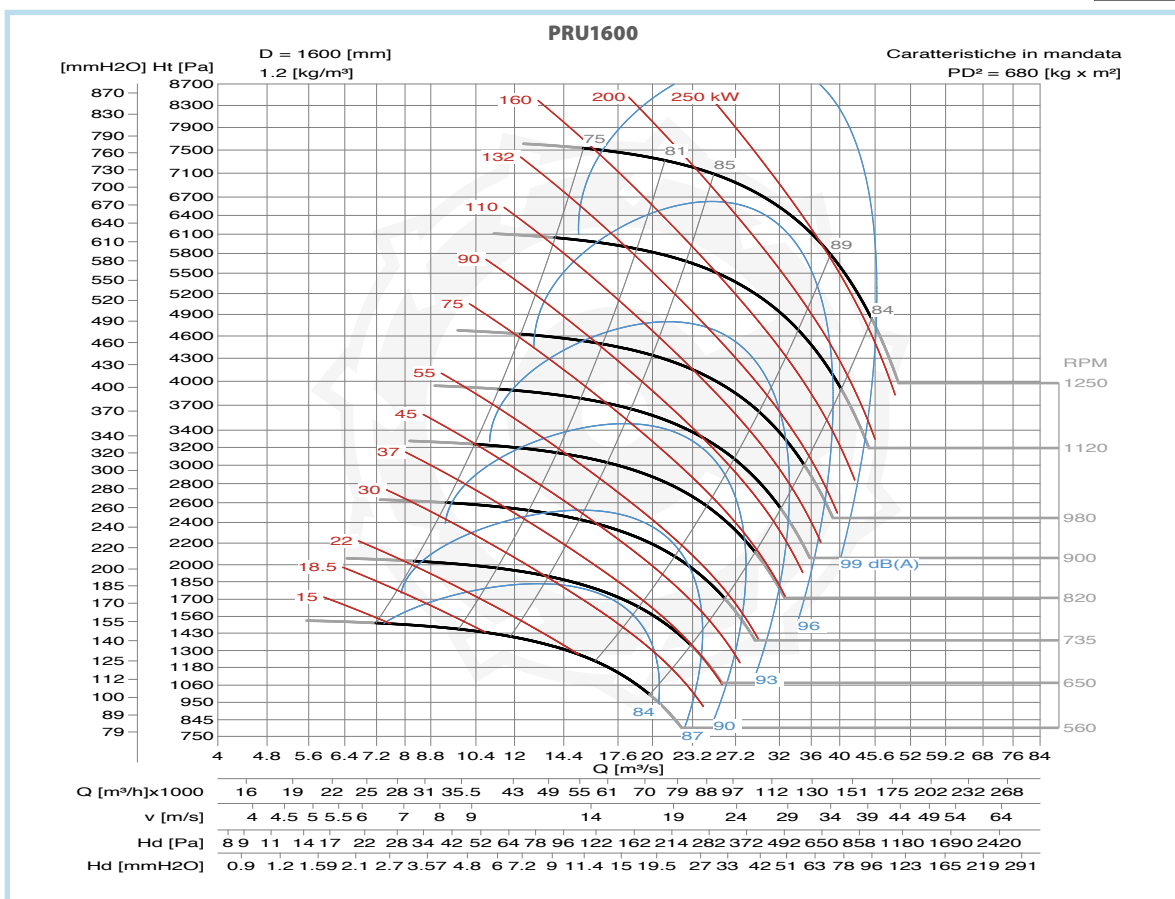
**RD135 LG135**

**RD180 LG180**

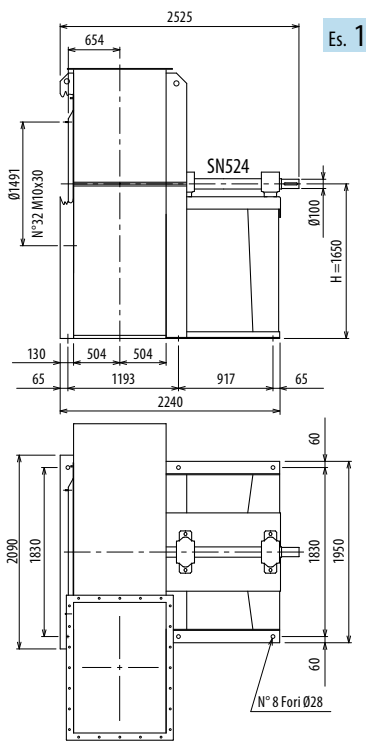
**RD225 LG225**

**RD270 LG270**

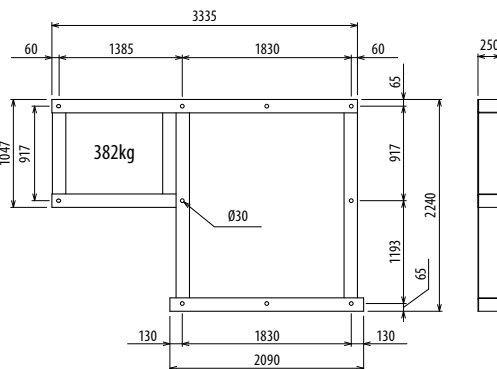
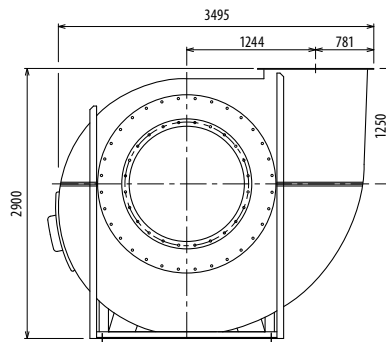
**RD315 LG315**







Es. 1



Il ventilatore non è orientabile

■ Le ventilateur n'est pas orientable

■ The fan is not revolvable

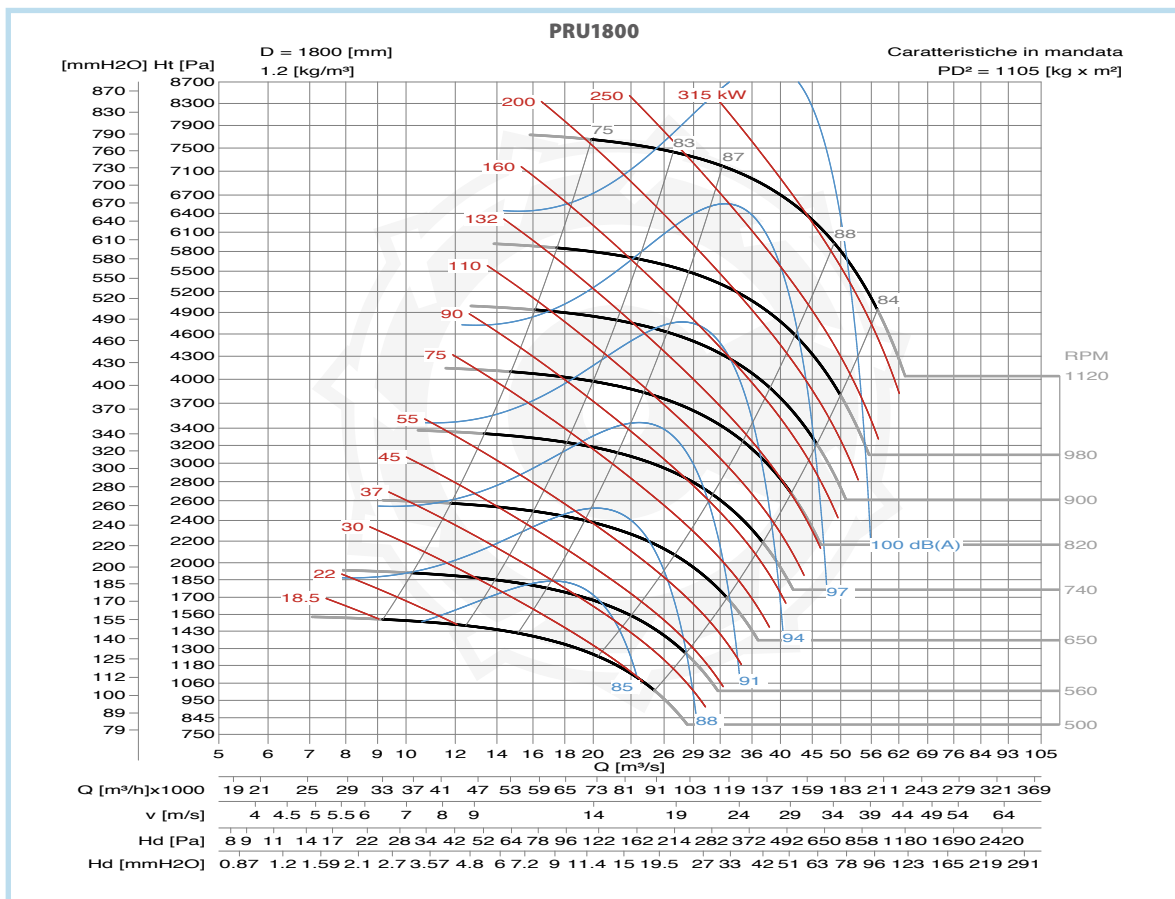
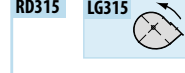
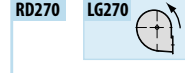
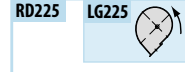
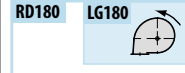
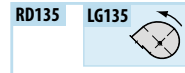
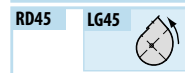
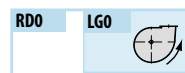
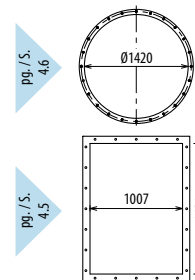
■ Der Ventilator ist nicht drehbar

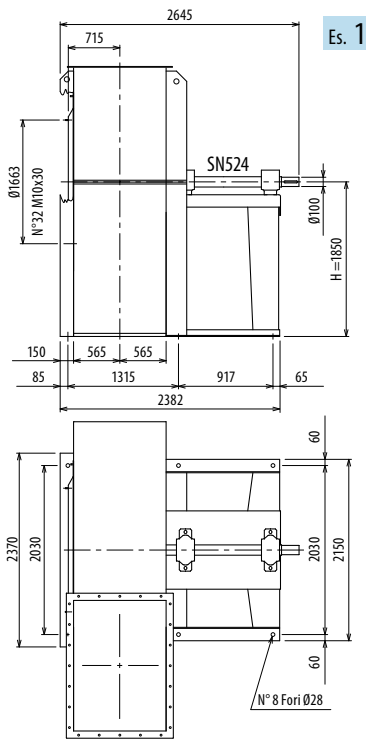
■ El ventilador no es orientable

TIPO - Type		PESO Weight	PD <sup>2</sup>												
VENTILATORE Fan	MOTORE Motor	Kg	Kgf x m <sup>2</sup>	B	I	H	H1	H2	H3	H4	H5	H6			
PRU1800/T		2790	1105			1650	1250	2120	1570	1400	1320	1800			

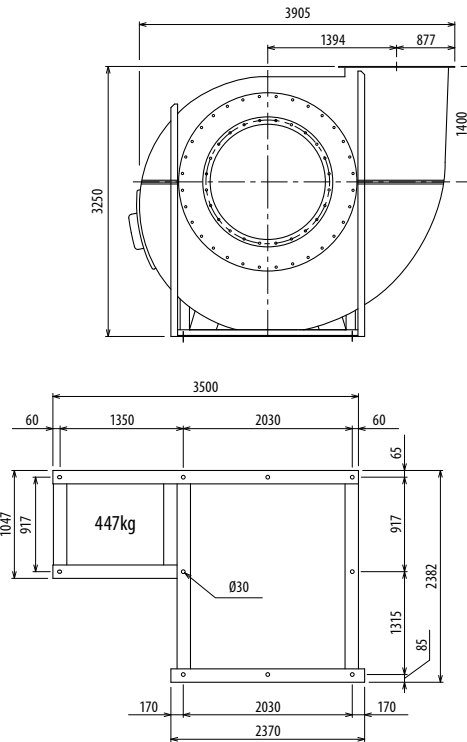
Ulteriori informazioni e quote:

- Ulérieures informations et cotes:
- Further information and sizes:
- Weitere Infos und Größen:
- Más informaciones y medidas:





Es. 1



Il ventilatore non è orientabile

■ Le ventilateur n'est pas orientable

■ The fan is not revolvable

■ Der Ventilator ist nicht drehbar

■ El ventilador no es orientable

TIPO - Type		PESO Weight	PD <sup>2</sup>												
VENTILATORE Fan	MOTORE Motor	Kg	Kgf x m <sup>2</sup>	B	I	H	H1	H2	H3	H4	H5	H6			
PRU2000/T		4300	1136			1850	1400	2360	1750	1600	1450	2000			

Ulteriori informazioni e quote:

■ Ulérieures informations et cotes:

■ Further information and sizes:

■ Weitere Infos und Größen:

■ Más informaciones y medidas:

