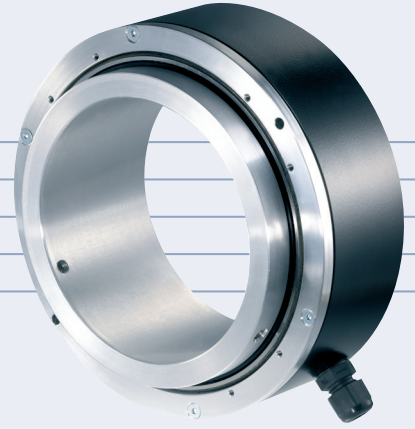




IH 150

INCREMENTAL HOLLOW SHAFT ENCODER

- Very Heavy Duty Construction
- Shaft Mounted
- Range of shaft bores (65 – 100 mm)
- 50000 PPR Maximum
- 4.75 to 30 Volts, RS 422 Compatible
- 300 kHz Maximum Frequency



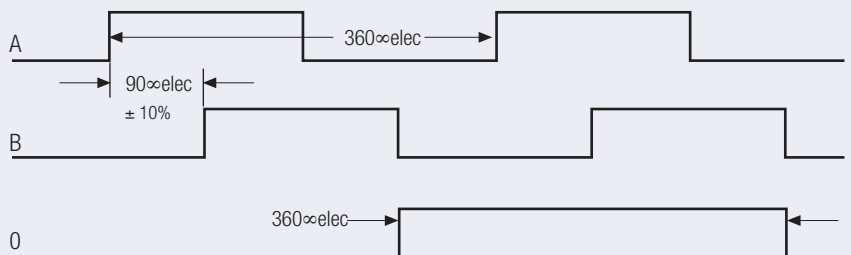
ELECTRICAL SPECIFICATIONS

Supply Voltage	4.75-30 V DC
Current Consumption	40 mA (max)
Output Circuit	Push-Pull, RS 422A
Impulse Frequency	300 kHz (max)
Logic Level (high)	Vcc - 0.7 Volt
Logic Level (low)	0.25 Volt (max)
Short Circuit Protection	100 %

MECHANICAL SPECIFICATIONS

Cover	Aluminium
Body	Aluminium
Shaft	Stainless Steel
Speed	4000 RPM (max)
Torque	> 0.2 Nm
Loading	Axial 60 N, Radial 80 N
Protection	IP 54
Temperature	-20°...+70° C (-4°...+158° F) +100° C (+212° F) Optional
Weight	2.160 lb (980 g)

OUTPUT SIGNALS



A Leads B in the CW Direction (facing shaft)
Complimentary channel also available

