

39,5_{Kg}
Weight
± 5%

770_L
Capacity

308_{Kg}
Nominal load

160 / 200 mm
Wheels diameter



FEATURES

The body and lid are injection moulded in solid coloured high-density polyethylene.

Manufactured using environmentally-friendly recyclable materials.

No heavy metals in the pigments.

Ideal for different types of waste collection: paper and cardboard, glass, packaging, organic matter, etc. ...

Available in a wide range of colours..

DIN, AFNOR, OSCHNER or VENTRAL lifting systems.

Customisation of lid with thermal transfer graphic, area: 230 x 45 mm.

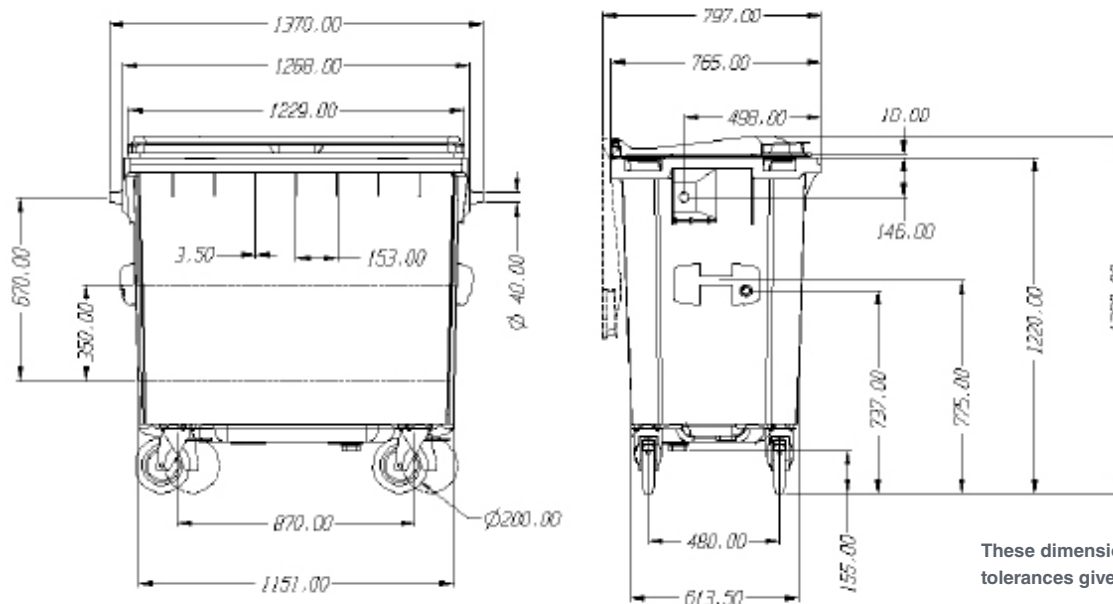
Customisation of body with silk screen or thermal transfer graphic, area: 300 x 400 mm.

CE Marking with sound power level indicated in accordance with European Directive 2000/14/EC. 83,1 db.

Product Approval Certificate awarded by TÜV Product Service GmbH in accordance with European Standard EN 840:2012

UN certificate for the transportation of hazardous goods.

STANDARDS



These dimensions are subject to the tolerances given in EN 840-1:2012.

F100882Z / 1-3-13 / Rev 0.0

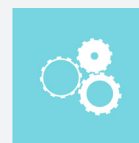
ATTRIBUTES



QUALITY

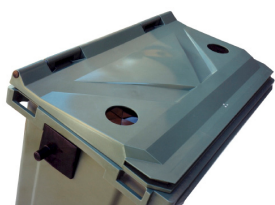


ACCESIBILITY



FUNCTIONALITY

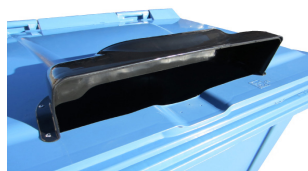
ACCESSORIES



GLASS APERTURE



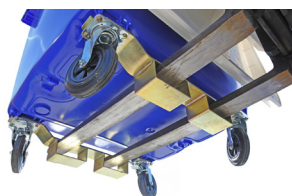
PLASTIC APERTURE



PAPER APERTURE



CENTRAL BRAKE SYSTEM



LIFTING SYSTEM



RAIN COVER



PEDAL



AVAILABLE IN A WIDE RANGE OF COLOURS

EQUIPMENT

160 or 200 mm diameter wheels.

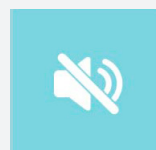
Openings with sizes and features specially designed to accommodate each type of waste, making them easy to use.

Integrated sound-proofing system in the lid.

Integrated handles in the body and lid for easy handling.

Recess for electronic chips.

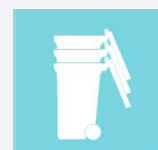
Can be equipped with a range of accessories providing real solutions to every requirement: pedal-operated lid opening, reflective strips, lock, side handle.



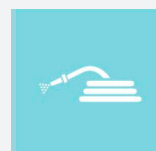
Sound-proofing



Lock



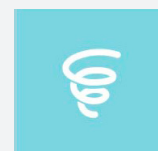
Easy to stack



Easy to clean



Break



Shock absorber