

WVD CHAIR



The **VVD Chair** is a refined piece designed by Belgian architect Vincent Van Duysen. It is characterized by pure lines, a specific profile, remarkable ergonomic qualities and the use of innovative materials. The front and back are upholstered in various fabrics or leather and the side profiles and arm rests come in a variety of natural wood veneers and lacquers. The base is available in stainless steel and powder coat.

The VVD Chair comes as an office chair with high or medium high back, a visitor's chair and a lounge version.

In 2018, Bulo launched a four-legged version of the chair, making the VVD Chair perfect for at home use as a dining chair.



Vincent Van Duysen



Award-winning Belgian architect and designer, **Vincent Van Duysen**, started his career working in Milan with Cinzia Ruggeri and Aldo Cibic-Sottsass Associati in 1985. Van Duysen established his own studio in Antwerp in 1990, engaging in a wide range of projects in Belgium, Europe, the Middle East and the US - with no limits to the diversity: interiors, buildings, private houses, apartment complexes, office concepts, retail, etc. Van Duysen is also renowned for the design of smaller objects and furniture he developed for international design houses.

From the very start, the driving force in Van Duysen's work has been the close relationship he nourishes between architecture, interior and product design. In his projects, the subtle transitions between all of these disciplines are realised in combination with a spatial design that continuously aims for the essence. This is an architectural language that embraces aesthetics while resisting passing

Content

Technical Description	4
Types	5
Dimensions	5
Materials	9
Upholstery Fabrics	11
Upholstery Leather	15



Technical Description

VVD Chair is made out of a metal frame and ilira stretch material, which provides a lot of comfort and makes it possible to have an exceptionally fine and light shape.

All desk chairs in the collection always have black glazed porcelain handles on the mechanism from 1st January 2020.

VVD Chair on castors is available with black pvc castors or castors with stainless steel cover. Hard castors for carpet floors or soft castors for hard floors or wooden floors.

The seat and back of VVD Slim Chair are upholstered all around, with or without seat stitching.

Types desk chair

High back with arm rests



High back without arm rests



Middle high back with arm rests



Middle high back without arm rests



Types visitor's chair

5-star base on castors without arm rests



5-star base on castors with arm rests



4-star base on glides without arm rests

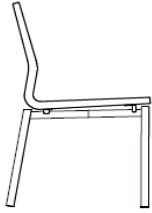


4-star base on glides arm rests



Types visitor's chair

On 4 legs without arm rests



On 4 legs with arm rests



Lounge chair without arm rests



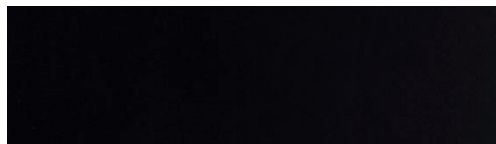
Lounge chair with arm rests



Materials

Base

Stainless steel

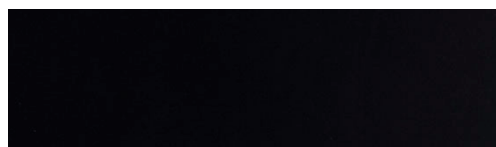


Coffee Bean Lacquered

Arm rests and side profiles



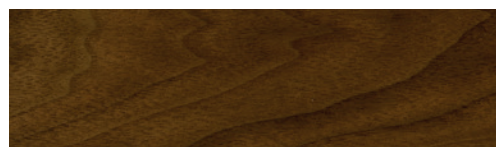
Black Lacquer



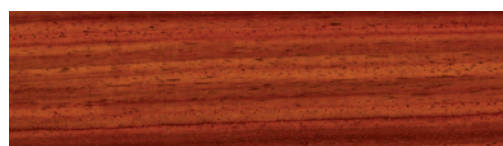
Coffee Bean Lacquer



Oak Veneer



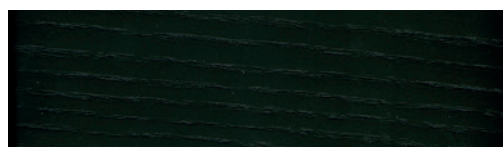
Walnut Veneer



Padouk Veneer



Wenge Veneer



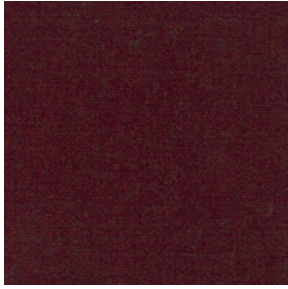
Black Lacquered Oak Veneer

Solid aluminium
Titanium anodised

Solid Aluminium
Black anodised

Ronny

Category: 1 | RO503



Composition 49% wool, 34% cotton, 17% nylon

Weight 500g/lin.m

Abrasion 50.000 Martindale rubs, ISO 12945

Pilling 4, ISO 12945.

Fastness to light 5, ISO 105-B02

Flammability BS 5852 Cigarette test, EN 1021-1 Cigarette test, EN 1021-2 Match test

Blazer

Category: 2 | CUZ2Q



Composition 100% Pure New Wool

Weight 13 1/2 oz/sq yd

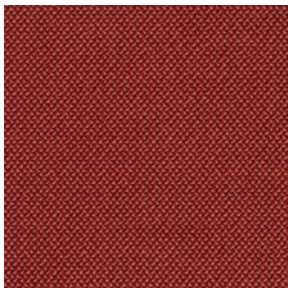
Abrasion ≥75,000 double rubs, ASTM D4157 Wyzenbeek method

Fastness to light 4, AATCC-16 (40 hours)

Flammability California Technical Bulletin 117 - 2013, NFPA 260 + UFAC Class 1, BS 7176 Low Hazard, ASTM E84 Class 1 or A (Adhered)

Credo

Category: 2 | Lampion



Composition 95% New Wool, 5% PA (polyamide)

Weight 610 g/m² - 870 g/lfm

Abrasion 100.000 rubs, ISO 12947-2

Pilling ≥ 4-5, ISO 12945-2

Fastness to light ≥ 5, ISO 105-B02

Flammability FAR 25.853 (12 sec. vertical), CAL TB 117 - 2013, DIN 4102-1 B2, DIN EN 13501-1, DIN EN 1021 -1 und -2, BS 5852:1979 (part1), BS 5852:2006 (part2) Crib5, BKZ: 5.3 SN 198898, UNI 9175 (1 IM), NF P92 503-507 M2, IMO: 2014/90/EU Marine Equipment Directive

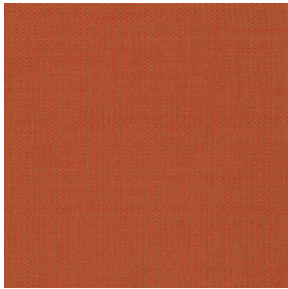
Re-wool

Category: 2 | RW-198

**Composition** 5% New wool (worsted), 45% Recycled wool, 10% Nylon**Weight** 540 g/lin.m**Sustainability** Complies with EU ecolabel "The Flower"**Abrasion** 100.000 Martindale**Pilling** 4**Fastness to light** 7**Flammability** BS 5852 Crib 5 with treatment, BS 5852 ignition source 3, BS 5852 part 1, EN 1021-1/2, NF D 60 013, UNI 9175 1IM, US Cal. Bull. 117-2013, ÖNORM B1/ Q1, AS/NZS 3837 Class 2

Topia

Category: 2 | Coral

**Composition** 95% Wool, 5% PA**Weight** 440 g/m² - 660 g/lfm**Abrasion** 50.000 rubs, ISO 12947-2**Pilling** ≥ 4-5, ISO 12945-2**Fastness to light** ≥ 5, ISO 105-B02**Flammability** FAR 25.853 (12 Sek. vertikal), CAL TB 117 - 2013, DIN 4102-1 B2, DIN EN 13501-1, DIN EN 1021 -1 and -2, BS 5852:1979 (part1), BS 5852:2006 (part2) Crib5, BKZ: 5.3 SN 198898, UNI 9175 (1 IM), IMO: 2014/90/EU Marine Equipment Directive, Train: EN 45545-2 R21 ISO 5660-1 (HL3)

Steelcut 2

Category: 3 | CT110

**Composition** 90% New wool (worsted), 10% Nylon**Weight** 825 g/lin.m**Sustainability** Complies with EU ecolabel "The Flower"**Abrasion** 100.000 Martindale**Pilling** 3-4**Fastness to light** 6**Flammability** AS/NZS 3837, class 2, BS 5852 part 1, EN 1021-1/2, IMO FTP Code 2010 Part 8, NF D 60 013, SN 198 898 5.3 with treatment, UNI 9175 1IM, US Cal. Bull. 117-2013, ÖNORM B1/ Q1, BS 5852 Crib 5 with treatment, NFPA 260, AS/NZS 1530.3



Composition 90% New wool, 10% Helanca

Weight 665 g/lin.m

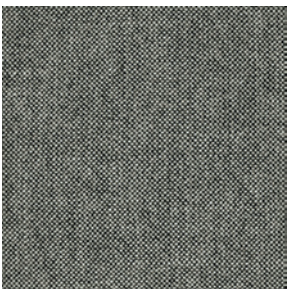
Sustainability Complies with EU ecolabel "The Flower"

Abrasion 100.000 Martindale

Pilling 3

Fastness to light 6-7

Flammability BS 5852 part 1, EN 1021-1/2, IMO FTP Code 2010 Part 8, NF D 60 013, NFPA 260, SN 198 898 5.3 with treatment, UNI 9175 1IM, US Cal. Bull. 117-2013, ÖNORM B1/ Q1, BS 5852 Crib 5 with treatment



Composition 70% New wool, 30% Viscose

Weight 795 g/lin.m

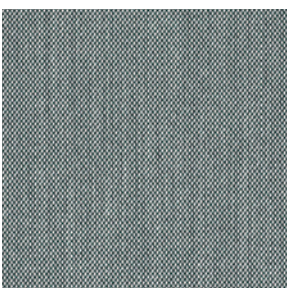
Sustainability Complies with EU ecolabel "The Flower"

Abrasion 100.000 Martindale

Pilling 3-4

Fastness to light 7

Flammability AS/NZS 1530.3, BS 5852 Crib 5, BS 5852 part 1, EN 1021-1/2, IMO FTP Code 2010 Part 8, NF D 60 013, NFPA 260, SN 198 898 5.3 with treatment, UNI 9175 1IM, US Cal. Bull. 117-2013, ÖNORM B1/ Q1, BS 5852 ignition source 3



Composition 90% New wool (worsted), 10% Nylon

Weight 770 g/lin.m

Sustainability Complies with EU ecolabel "The Flower"

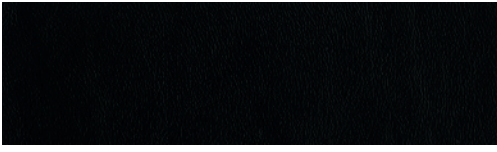
Abrasion 100.000 Martindale

Pilling 4

Fastness to light 5

Flammability AS/NZS 3837, class 2, BS 5852 part 1, EN 1021-1/2, IMO FTP Code 2010 Part 8, NF D 60 013, NFPA 260, SN 198 898 5.3 with treatment, UNI 9175 1IM, US Cal. Bull. 117-2013, ÖNORM B1/ Q1, BS 5852 Crib 5 with treatment, AS/NZS 1530.3, BS 5852 ignition source 3

Upholstery Leather



Black