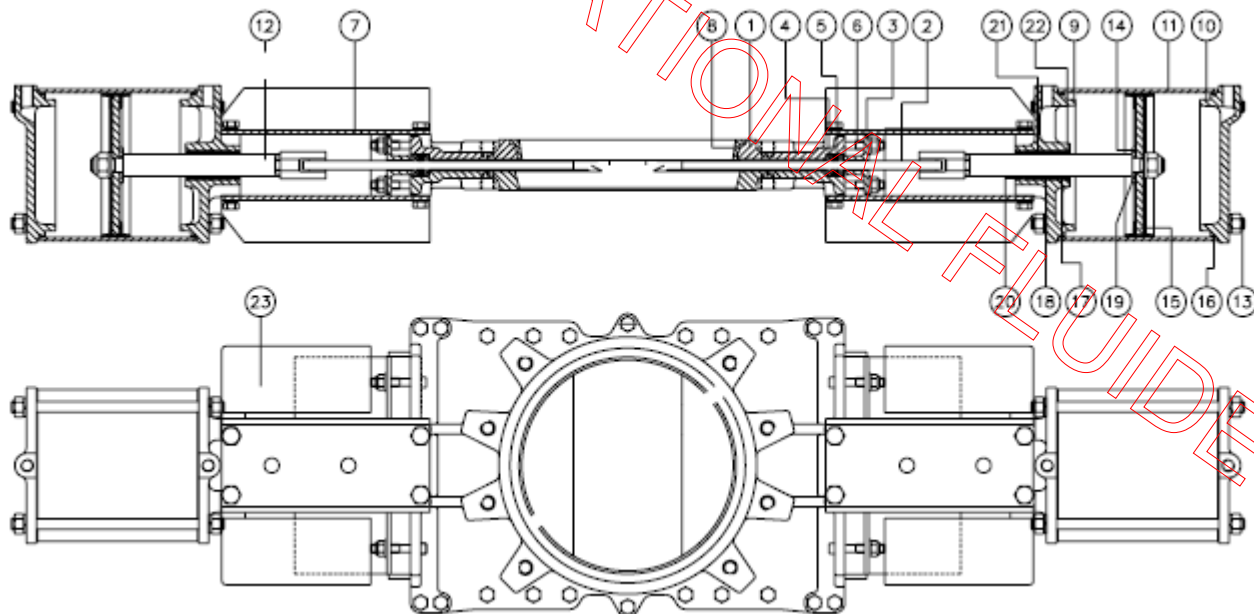


VANNE GUILLOTINE DOUBLE PELLE  
1711

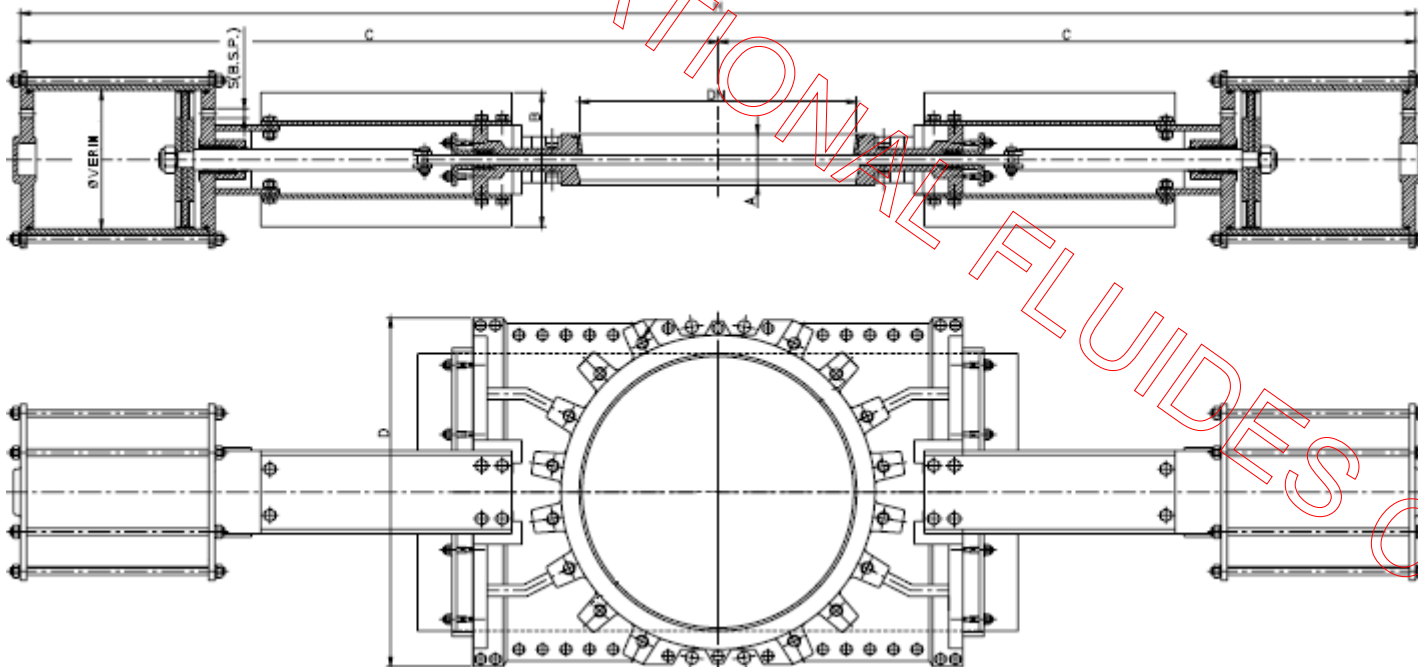
NOMENCLATURE



POS.	DESCRIPTION	OPTION 1	OPTION 2
1	CORPS	ACIER AU CARBONE	CF8M
2	PELLE	304	316
3	PRESSE ETOUPE	INOX	INOX
4	ETOUPE	SYNTHETIQUE+PTFE	SYNTHETIQUE+PTFE
5	JOINT TORIQUE	EPDM	EPDM
6	GOUJON	ACIER ZINGUE	INOX
7	PLAQUES SUPPORT	ACIER	ACIER
8	FRETTRE RENFORCEE	CF8M	CF8M
9	TETE DE VERIN	GGG45	GGG45
10	CHAPEAU DE VERIN	GGG45	GGG45
11	CHEMISE	ALUMINIUM	ALUMINIUM
12	TIGE DE PISTON	304	304
13	TIRANT	ACIER ZINGUE	ACIER ZINGUE
14	RONDELLE	ACIER	ACIER
15	PISTON	ACIER+NITRILE	ACIER+NITRILE
16	JOINT TORIQUE	NITRILE	NITRILE
17	JOINT TORIQUE	NITRILE	NITRILE
18	JOINT TORIQUE	NITRILE	NITRILE
19	JOINT TORIQUE	NITRILE	NITRILE
20	RACLEUR	ACIER+NITRILE	ACIER+NITRILE
21	BAGUE DE GUIDAGE	NYLON	NYLON
22	ANNEAU ELASTIQUE	ACIER	ACIER
23	CARTERS	ACIER	ACIER

## VANNE GUILLOTINE DOUBLE PELLE 1711

COMMANDE PAR ACTIONNEUR PNEUMATIQUE DOUBLE EFFET (PRESSION AIR SERVICE 6 Kg/cm<sup>2</sup>)

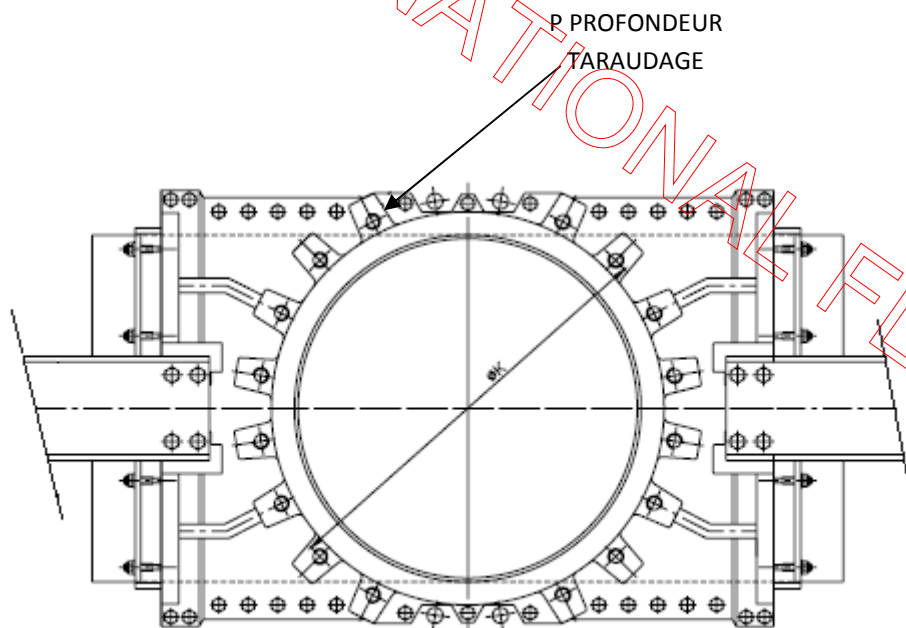





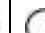
DN	DIMENSIONS						
	A	B	D	ØVERIN	S B.S.P.	C	H
100	50	72	204	100	1/4"	488	976
150	60	110	230	125	1/4"	561	1122
200	60	110	296	160	1/4"	671	1342
250	70	110	330	200	3/8"	777	1554
300	70	110	408	200	3/8"	851.5	1703
350	96	290	475	250	3/8"	1030	2060
400	100	290	510	250	3/8"	1136	2272
450	106	290	575	300	1/2"	1241	2482
500	110	290	627	300	1/2"	1346	2692
600	110	290	755	300	1/2"	1520	3040
700	110	300	855	350	1/2"	1880	3760
800	110	300	955	350	1/2"	2090	4180
900	110	350	1055	400	1/2"	2235	4470
1000	110	350	1155	400	1/2"	2378	4756

# VANNE GUILLOTINE DOUBLE PELLE

## 1711

### RACCORDEMENT

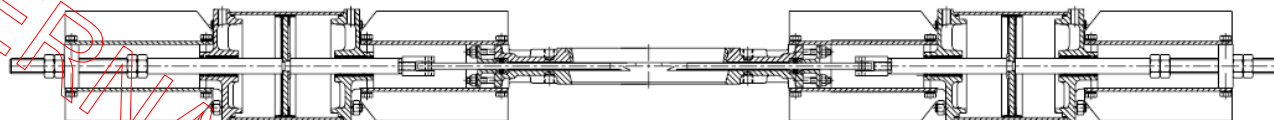


DN	DIN PN10					ANSI 150				
			M METRIC	P	øK			R UNC	P	øK
50	4		M 16	8	125	4		5/8"	8	120'6
65	4		M 16	8	145	4		5/8"	8	139'7
80	4	4	M 16	9	160	4		5/8"	9	152'4
100	4	4	M 16	9	180	4	4	5/8"	9	190'5
125	4	4	M 16	9	210	4	4	3/4"	9	215'9
150	4	4	M 20	10	240	4	4	3/4"	10	241'3
200	4	4	M 20	10	295	4	4	3/4"	10	298'4
250	6	6	M 20	12	350	6	6	7/8"	12	361'9
300	6	6	M 20	12	400	6	6	7/8"	12	431'8
350	10	6	M 20	21	460	8	4	1"	21	476'2
400	10	6	M 24	21	515	10	6	1"	21	539'7
450	14	6	M 24	22	565	10	6	1 1/8"	22	577'8
500	14	6	M 24	22	620	14	6	1 1/8"	22	635
600	14	6	M 27	22	725	14	6	1 1/4"	22	749'3
700	16	8	M 27	22	840					
800	16	8	M 30	22	950					
900	20	8	M 30	20	1050					
1000	20	8	M 33	20	1160					
1200	22	10	M 36	22	1380					

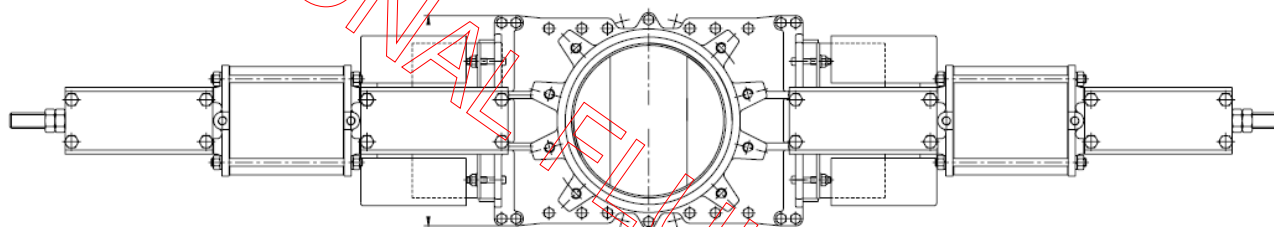
## VANNE GUILLOTINE DOUBLE PELLE

1711

### OPTIONS



#### BUTEES MECANQUES AJUSTABLES



#### AUTRES OPTIONS

- RACLEUR DANS PRESSE ETOUPE
- PELLE POLIE MIRROIR
- PELLE REVETUE PTFE
- PELLE STELLITE
- INDICATEURS DE POSITIONS
- ELECTRODISTRIBUTEUR, CABLAGE, TUBING
- CORPS EN FONTE GGG50, ACIER A216WCB, INOX AISI316Ti /Duplex/254SMO/Uranus B6, ETC.
- ETOUPE EN COTON SUIFFE, COTON + PTFE, PTFE LUBRIFIE, GRAPHITE, FIBRE CERAMIQUE, ETC.
- ETC.