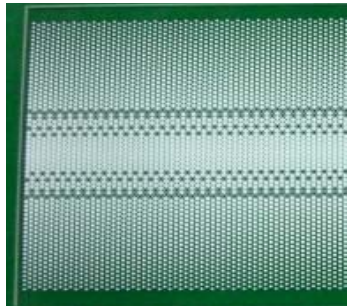




AJet Plus



➤ sample





Indoor & Outdoor Soft & Hard.

- Hybrid UV curable digital inkjet printer is equipped with roll to roll and panel to panel feeds
- Material transfer belts with high precision and low fraction errors enable materials longer than 3 meters to print precisely
- The special arrangement of print heads lets white color outstanding and heightens the intensity and vivid effect on colorful printing
- The unique function of simultaneous printing of color-white-color and color-white-black expand the application of transparent materials

➤ Content:

<in-left>

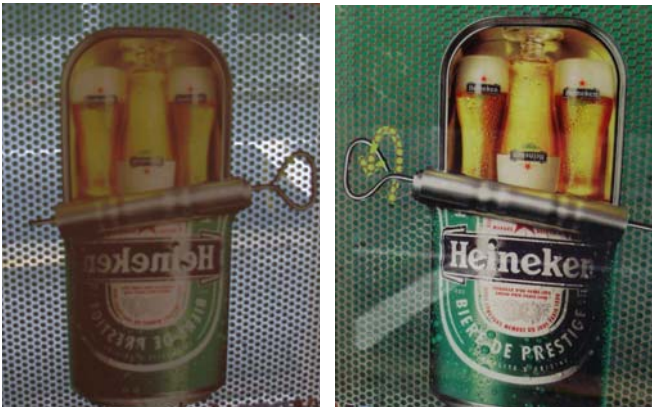
Standard machine's feature

➤ The unique printing function of 3 layers

The 3 layer simultaneous printing resolves difficulties of repositioning and achieves partial entity print without influencing the speed of print.

Also, the perspective application shows different effect in Indoor/Outdoor /Day/Night, and reaches effects of disguise and promotion

During the day in indoor and outdoor

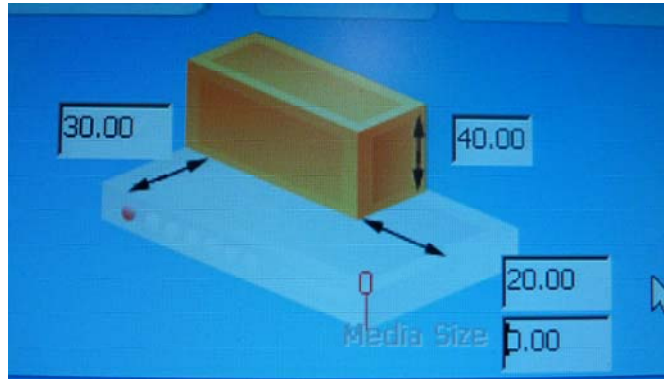


During the night in indoor and outdoor



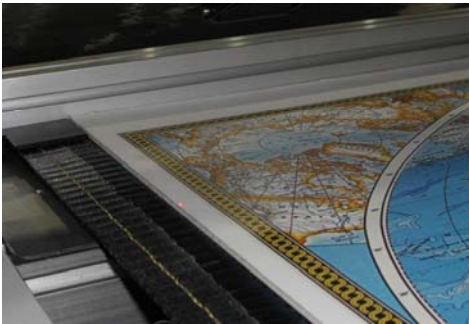
➤ **Automatic suction areas and adjustment**

AJet Plus uses the unique structure of print heads to pile inks to make extremely obvious effect on gradient color and 3D stereo imaging effects.



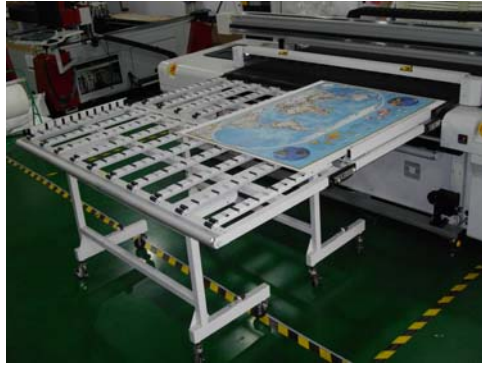
➤ **Accurate position**

The special laser point design of assisting alignment effectively increases the accuracy printing of double sides and stably output high quality printing



➤ **Unlimited materials**

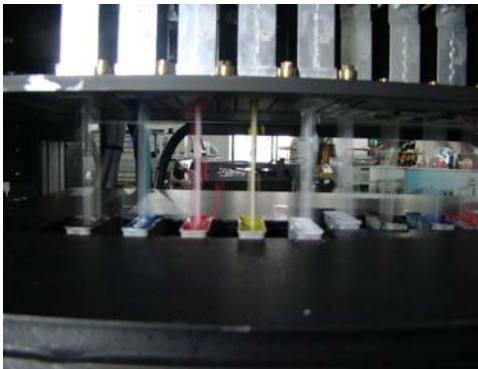
Material supporting frames account so small space that it is convenient to load/download materials, and they can be easily adjusted to handle big panels.



<in-right>

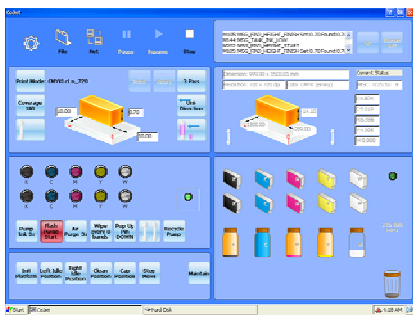
➤ **The print heads' maintenance system**

The pipeline matching automatic purges and integrating link line and flush line conveniently make print heads cleaned and keep nozzles in good condition.



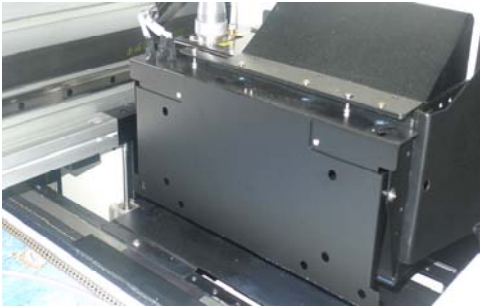
➤ **Graphical operating interface**

User-friendly operating interface enables the operation much easily.



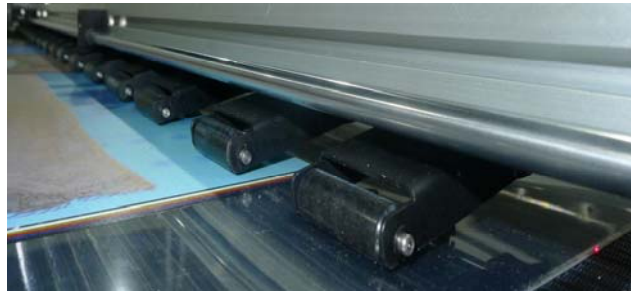
➤ **The anti-collision system**

The system can avoid harming from wrong set height.



➤ **Adjustable pressure drawers**

Depending on the material's quality, adjustable pressure rollers can be adjusted to assure materials' flatness and can avoid wasting materials from non-flat edge and free sway.



➤ **Automatic supplying ink systems with high-capacity**

When ink reach alert water level, the major system of supplying ink will automatically supply ink to minor system. The system can make sure uninterrupted print for a long time, and the user doesn't have to stop the machine halfway.



- The print speed varies with the width of printing pictures.
- Two continuous connection set of material supporting frames in the front and rear are standard equipment, and they are optional to extend the printing length of roll-to-roll materials
- The length of AJet Plus varies with the number of material supporting frames