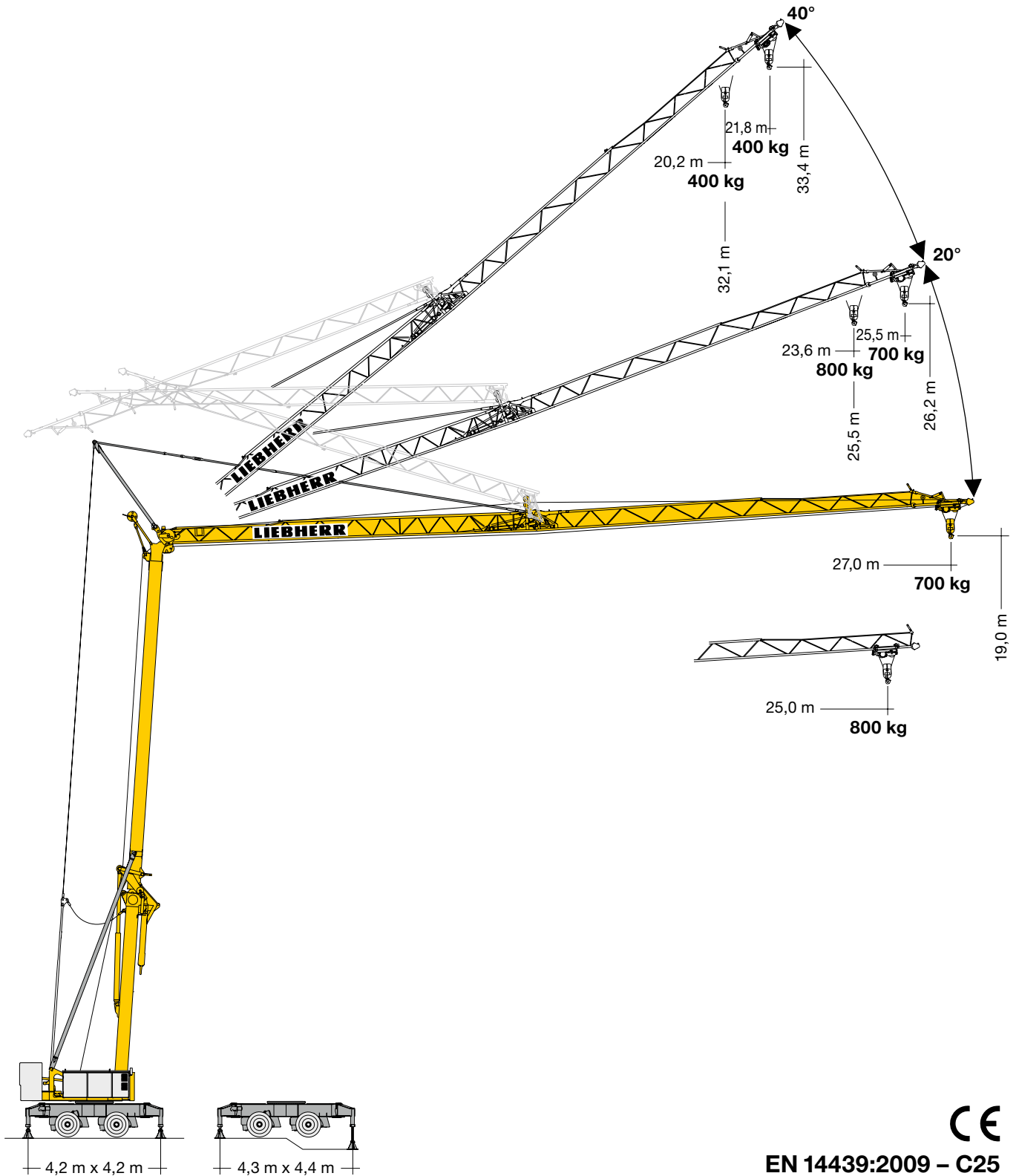


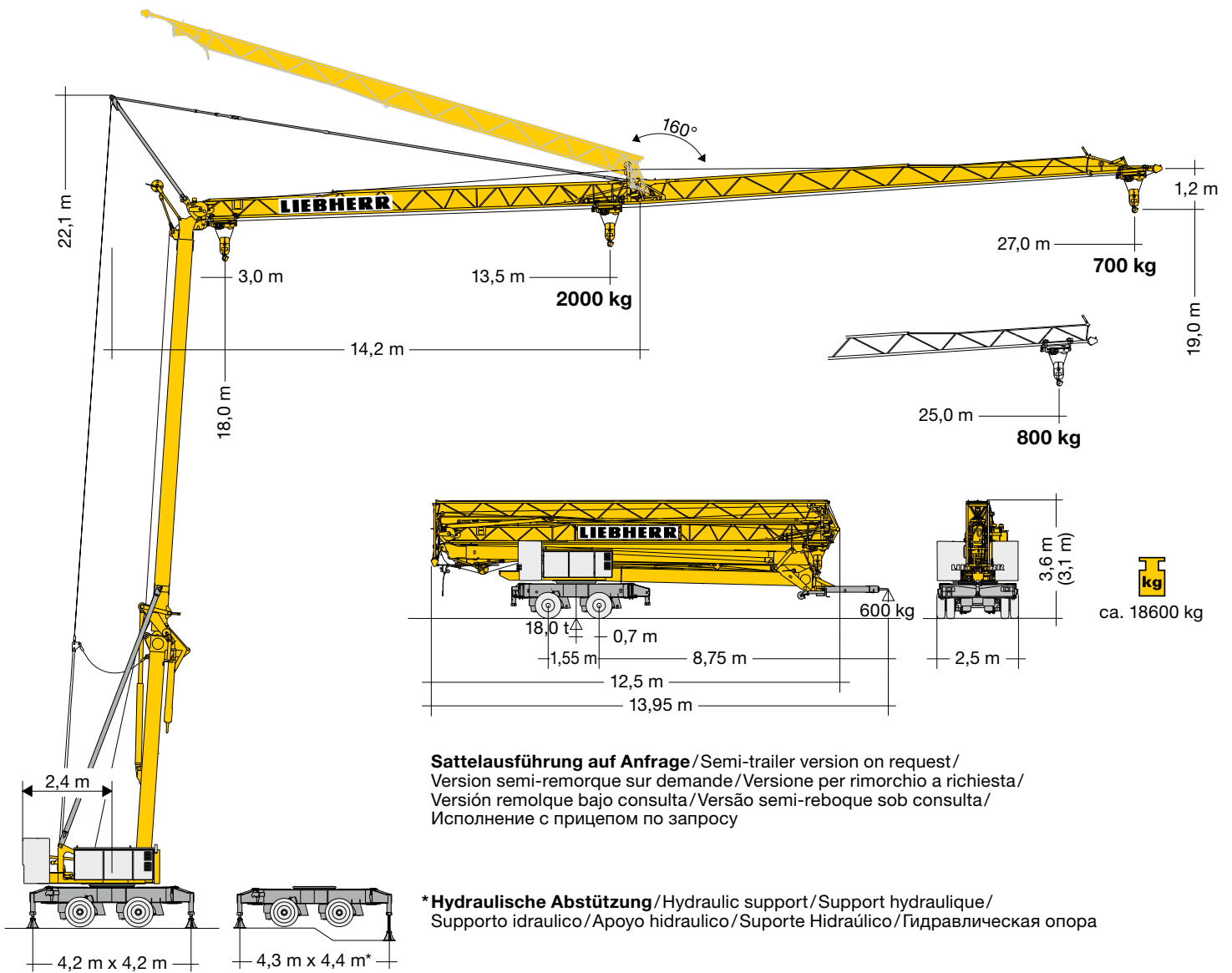
# Turmdrehkran 22 HM

Tower Crane / Grue à tour / Gru a torre / Grúa torre /  
Guindaste de torre / Башенный поворотный кран



EN 14439:2009 - C25

# LIEBHERR



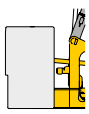

## Ausladung und Tragfähigkeit

Radius and capacity / Portée et charge / Sbraccio e portata /  
Alcances y cargas / Alcance e capacidade de carga / Вылет и грузоподъемность

m	m/kg	m/kg																		
		10,0	11,0	12,0	13,0	14,0	15,0	16,0	17,0	18,0	19,0	20,0	21,0	22,0	23,0	24,0	25,0	26,0	27,0	
27,0	3,0 – 12,0 2000	2000	2000	2000	1790	1630	1490	1370	1270	1180	1100	1030	970	910	860	820	770	740	700	
25,0	3,0 – 12,2 2000	2000	2000	2000	1850	1680	1540	1420	1310	1220	1140	1060	1000	940	890	840	800			
13,5	3,0 – 13,5 2000	2000																		

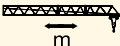



## Gewicht

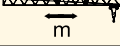
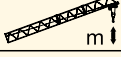
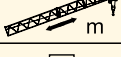

Weight / Poids / Peso / Pesos / Macca

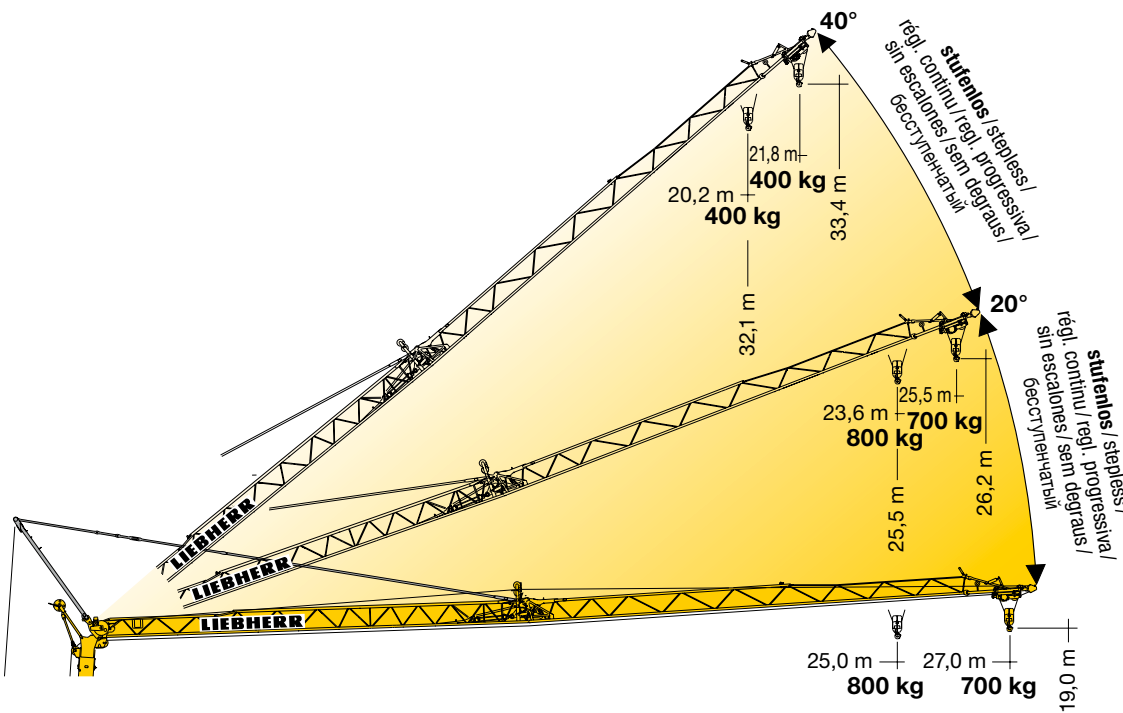
	r = 2,4 m	7600 kg		11000 kg
--	-----------	---------	---	----------

# Auslegersteilstellung

Elevated jib / Flèche inclinée / Braccio inclinato / Pluma inclinada / Lança inclinada / Положение стрелы под углом




		5°	10°	15°	20°	25°	30°	35°	40°
27,0		20,2	22,4	24,5	26,2	28,5	30,4	32,2	33,4
		3,0 – 11,9 – 26,9	3,0 – 14,7 – 26,6	3,0 – 19,2 – 26,2	3,0 – 23,2 – 25,5	3,0 – 24,7	3,0 – 23,7	3,0 – 22,5	3,0 – 21,8
		- 2000 – 700	- 1500 – 700	- 1050 – 700	800 – 700	630	520	440	400

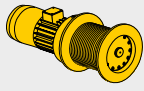

		5°	10°	15°	20°	25°	30°	35°	40°
25,0		20,0	21,9	23,9	25,5	27,6	29,4	31,0	32,1
		3,0 – 12,2 – 24,9	3,0 – 15,1 – 24,7	3,0 – 19,6 – 24,2	3,0 – 23,6	3,0 – 22,9	3,0 – 22,0	3,0 – 20,9	3,0 – 20,2
		- 2000 – 800	- 1500 – 800	- 1050 – 800	800	630	520	440	400





## Antriebe

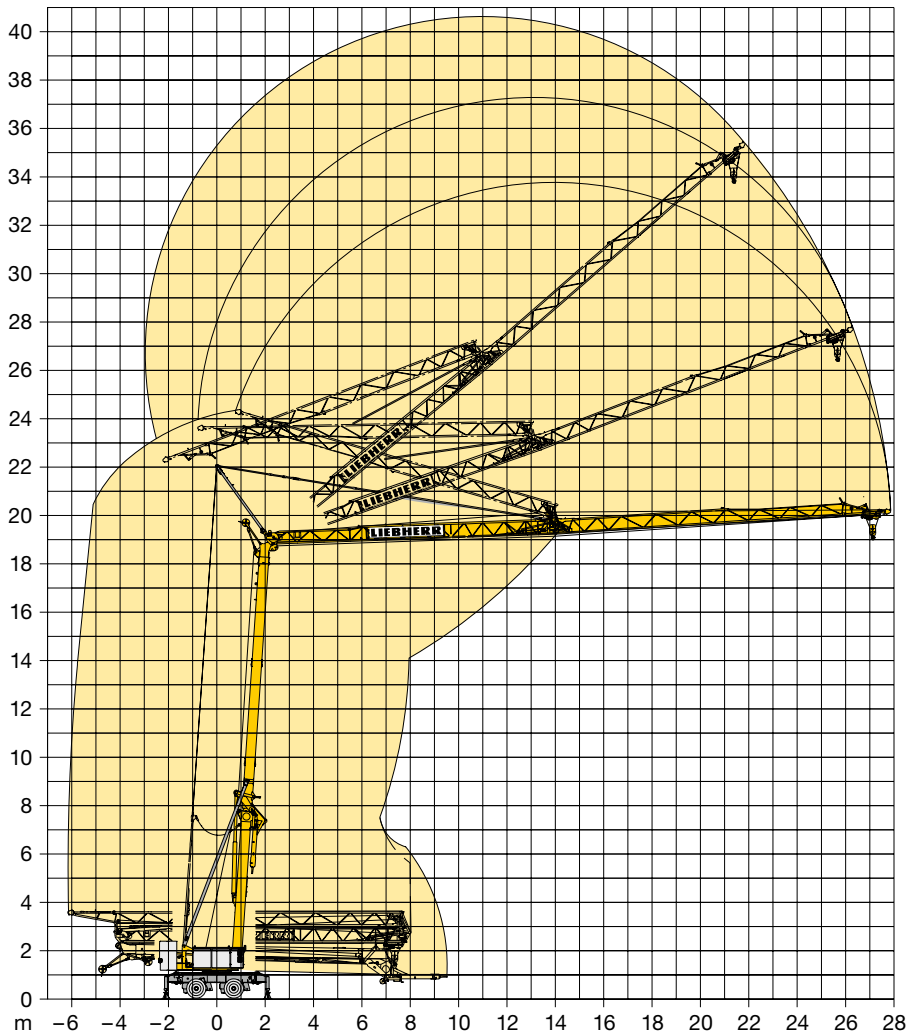
Driving units / Mécanismes d'entraînement / Meccanismi / Mecanismos / Mecanismos / Приводы

	U/min 0 ↔ 0,8 st./min tr./min	1,5 kW FU
	18,0/36,0 m/min	1,1/1,8 kW
	ca. 160°/min	4,0 kW

	Stufe / Step / Cran / Marcia / Velocidad / Velocidade / Передача	
	kg	m/min
7,5 kW FU 	1	2000 4,0
	2	2000 20,0
	3	1300 30,0
	4	1000 40,0

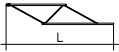
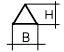
BGL		C.0.02.0020
-----	---	-------------

	400 V – 440 V	50 Hz / 60 Hz	12,0 kVA
---	---------------	---------------	----------



## Kolli-Liste

Packing List/Liste de colisage/Lista dei colli/  
Lista de contenido/Lista de embalagem/Упаковочный лист

Pos.	Anz.			L (m)	B (m)	H (m)	kg
Item	Qty.						
Rep	Qte.						
Voce	Qta.						
Pos.	Cant.	<b>Ausleger-Verlängerung 25,0 m – 27,0 m / Jib extension /</b>					
Ref.	Cant.	Rallonge de la flèche/Elemento estensione braccio/					
Поз.	Кол-во	Prolongación de pluma/Extensão da lança/Удлинение стрелы		2,00	0,71	0,53	80

**Änderungen vorbehalten!** / Subject to technical modifications! /  
Sous réserves de modifications ! / Con riserva di modifiche! /  
¡Sujeto a modificaciones sin previo aviso! / Sujeto a modificações! /  
С правом внесения изменений!

**Sämtliche Angaben erfolgen ohne Gewähr.** / This information is supplied without liability. /  
Ces renseignements sont sans garantie. / Tutte le indicazioni fornite senza garanzia. /  
Declinamos toda responsabilidad derivada de la información proporcionada. / Declinamos  
qualquer responsabilidade quanto à informação fornecida. / Все данные указаны без обязательств.

120 P – 5804 • EN 14439:2009 – A3 • BGL C.0.02.0020 • 04.19

Printed in Germany.

Liebherr-Werk Biberach GmbH  
Postfach 1663, D-88396 Biberach an der Riss  
☎ +49 73 51 41-0, Fax: +49 73 51 41 22 25  
www.liebherr.com, E-Mail: info.lbc@liebherr.com

Liebherr Industrias Metálicas, S.A.  
Polígono Industrial Agustinos, calle E, E-31014 Pamplona  
☎ +34 94829 70-00, Fax +34 94829 70-29  
www.liebherr.com, E-Mail: info.lim@liebherr.com