



Cat[®] 236D

SKID STEER LOADER

FEATURES:

The Cat[®] 236D Skid Steer Loader, with its radial lift design, delivers impressive mid-lift reach and excellent digging performance with outstanding drawbar power. The 236D features the following:

- **Industry leading sealed and pressurized cab option** provides a cleaner and quieter operating environment with excellent work tool visibility.
- **Available high-back, heated, air ride seat with seat mounted adjustable joystick controls** makes the D Series the industry leader in operator comfort.
- **High performance power train** provides maximum performance and production capability through the Electronic Torque Management system, optional two speed travel and an industry exclusive electronic hand/foot throttle with decel pedal capability.
- **High Flow hydraulic system** is available for applications that demand maximum hydraulic work tool performance.
- **Electronically controlled Cat C3.3B engine** provides high horsepower and torque while meeting U.S. EPA Tier 4 Final (EU Stage IIIB) emission standards.
- **Cat "Intelligent Leveling" system (ILEV)** provides industry leading technology, integration and optional features such as work tool return to dig and work tool positioner.
- **Speed Sensitive Ride Control option** improves operation on rough terrain, enabling better load retention, increased productivity and greater operator comfort.
- **Maximize machine capability and control** with optional Advanced Display providing on-screen adjustments for implement response, hystat response and creep control. Also features multi-language functionality with customizable layouts, security system and rearview camera.
- **Ground level access** to all daily service and routine maintenance points helps reduce machine downtime for greater productivity.
- **Broad range of performance matched Cat Work Tools** make the Cat Skid Steer Loader the most versatile machine on the job site.

Specifications

Engine

| | | |
|------------------------------------|----------------------|---------------------|
| Engine Model | Cat 3.3B DIT (turbo) | |
| Gross Power SAE J1995 | 55.4 kW | 74.3 hp |
| Net Power SAE 1349 | 54.6 kW | 73.2 hp |
| Net Power ISO 9249 | 55.1 kW | 73.9 hp |
| Peak Torque at 1,500 rpm SAE J1995 | 265 N·m | 195 lbf·ft |
| Displacement | 3.3 L | 203 in ³ |
| Stroke | 120 mm | 4.7 in |
| Bore | 94 mm | 3.7 in |

Weights*

| | | |
|------------------|---------|----------|
| Operating Weight | 2975 kg | 6,559 lb |
|------------------|---------|----------|

Power Train

| | | |
|------------------------------------|-----------|----------|
| Travel Speed (Forward or Reverse): | | |
| One Speed | 11.2 km/h | 7.0 mph |
| Two Speed Option | 17.1 km/h | 10.6 mph |

Operating Specifications*

| | | |
|--|---------|----------|
| Rated Operating Capacity | 818 kg | 1,800 lb |
| Rated Operating Capacity with Optional Counterweight | 900 kg | 2,000 lb |
| Tipping Load | 1633 kg | 3,600 lb |
| Breakout Force, Tilt Cylinder | 2302 kg | 5,074 lb |

Hydraulic System

| | | | |
|-----------------------------------|------------|------------|--|
| Hydraulic Flow – Standard: | | | |
| Loader Hydraulic Pressure | 23 000 kPa | 3,335 psi | |
| Loader Hydraulic Flow | 76 L/min | 20 gal/min | |
| Hydraulic Power (calculated) | 29 kW | 39 hp | |
| Hydraulic Flow – High Flow: | | | |
| Maximum Loader Hydraulic Pressure | 23 000 kPa | 3,335 psi | |
| Maximum Loader Hydraulic Flow | 112 L/min | 30 gal/min | |
| Hydraulic Power (calculated) | 43 kW | 58 hp | |

Cab

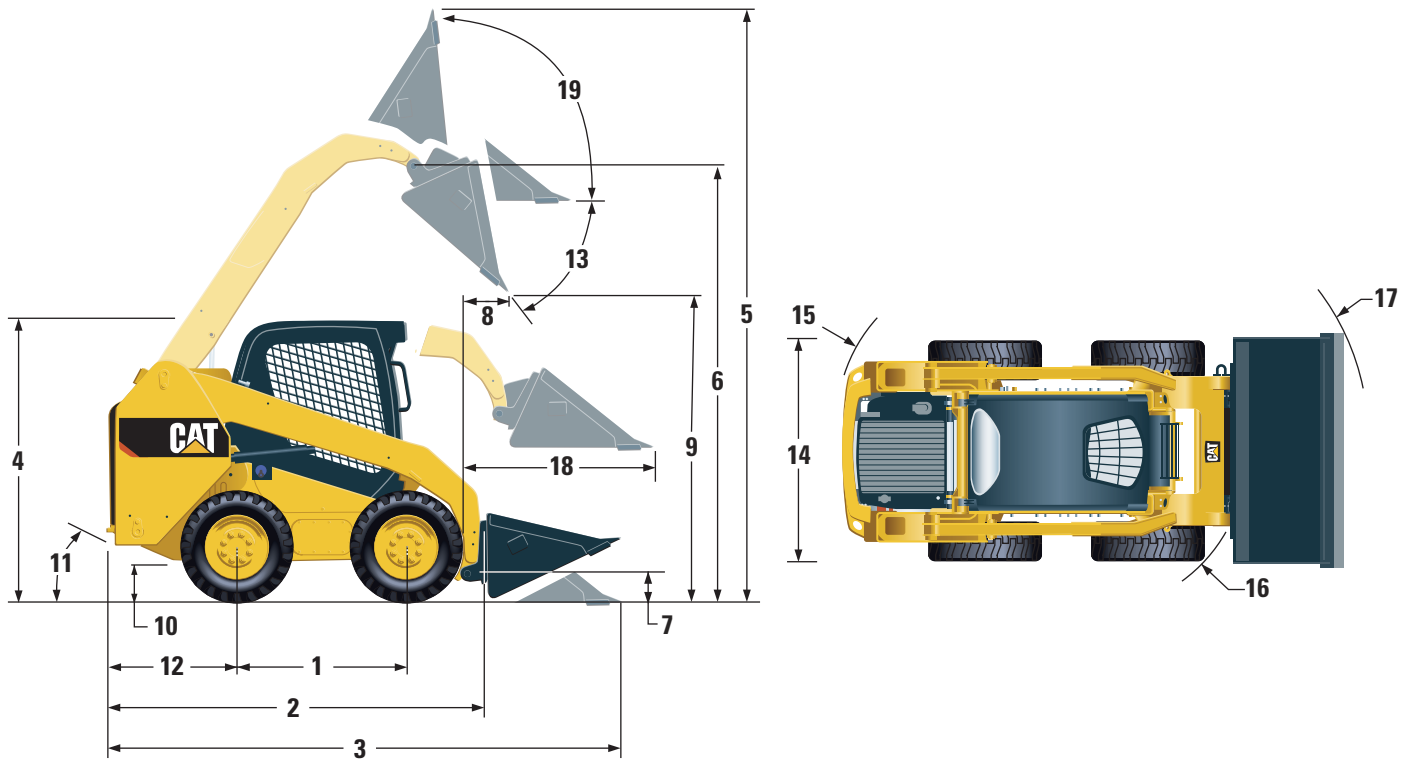
| | |
|---------------|------------------------|
| ROPS | ISO 3471:2008 |
| FOPS | ISO 3449:2005 Level I |
| FOPS Level II | ISO 3449:2005 Level II |

Service Refill Capacities

| | | |
|----------------------|-------|----------|
| Chain Box, each side | 8.8 L | 2.3 gal |
| Cooling System | 14 L | 3.7 gal |
| Engine Crankcase | 11 L | 3.0 gal |
| Fuel Tank | 105 L | 27.7 gal |
| Hydraulic System | 50 L | 13.2 gal |
| Hydraulic Tank | 39 L | 10.3 gal |



236D Skid Steer Loader



Dimensions*

| | | | |
|----|--|---------|----------|
| 1 | Wheelbase | 1105 mm | 43.5 in |
| 2 | Length without Bucket | 2767 mm | 108.9 in |
| 3 | Length with Bucket on Ground | 3487 mm | 137.3 in |
| 4 | Height to Top of Cab | 2082 mm | 82.0 in |
| 5 | Maximum Overall Height | 3977 mm | 156.6 in |
| 6 | Bucket Pin Height at Maximum Lift | 3122 mm | 122.9 in |
| 7 | Bucket Pin Height at Carry Position | 190 mm | 7.5 in |
| 8 | Reach at Maximum Lift and Dump | 408 mm | 16.0 in |
| 9 | Clearance at Maximum Lift and Dump | 2359 mm | 92.9 in |
| 10 | Ground Clearance | 195 mm | 7.7 in |
| 11 | Departure Angle | | 26° |
| 12 | Bumper Overhang behind Rear Axle | 1021 mm | 40.2 in |
| 13 | Maximum Dump Angle | | 48° |
| 14 | Vehicle Width over Tires | 1676 mm | 66.0 in |
| 15 | Turning Radius from Center - Machine Rear | 1639 mm | 64.5 in |
| 16 | Turning Radius from Center - Coupler | 1314 mm | 51.8 in |
| 17 | Turning Radius from Center - Bucket | 2107 mm | 83.0 in |
| 18 | Maximum Reach with Arms Parallel to Ground | 1353 mm | 53.3 in |
| 19 | Rack Back Angle at Maximum Height | | 91° |

*Operating Weight, Operating Specifications and Dimensions all based on 75 kg (165 lb) operator, all fluids, one speed, OROPS, 1676 mm (66 in) dirt bucket, **Cat 10 x 16.5 tires**, standard flow hydraulics, mechanical suspension seat, no optional counterweights and manual quick coupler (unless otherwise noted).

MANDATORY EQUIPMENT

- Hydraulics, Standard or High Flow
- Quick Coupler, Mechanical or Electric
- Seat Belt, 50 mm (2 in) or 75 mm (3 in)
- EU Preparation Package (includes Demand Fan) (Europe only)
- Power Train: One Speed, One Speed with Ride Control, Two Speed or Two Speed with Ride Control
- Tires, 10 × 16.5 or 12 × 16.5

PERFORMANCE PACKAGE (*must select one of the following*)

- Performance Package H1: *Standard Flow Hydraulics (No Self Level)*
- Performance Package H4: *Standard Flow Hydraulics (No Self Level), Return to Dig/Work Tool Positioner, Electronic Snubbing (Raise and Lower)*
- Performance Package H5: *High Flow Hydraulics (No Self Level), Return to Dig/Work Tool Positioner, Electronic Snubbing (Raise and Lower)*

STANDARD EQUIPMENT

ELECTRICAL

- 12 volt Electrical System
- 80 ampere Alternator
- Ignition Key Start/Stop Switch
- Lights: *Gauge Backlighting, Two Rear Tail Lights, Two Adjustable Front and Rear Halogen Lights, Dome Light*
- Backup Alarm
- Heavy Duty Battery, 880 CCA

OPERATOR ENVIRONMENT

- Gauges: *Fuel Level, Hour Meter*
- Operator Warning System Indicators: *Air Filter Restriction, Alternator Output, Armrest Raised/Operator Out of Seat, Engine Coolant Temperature, Engine Oil Pressure, Glow Plug Activation, Hydraulic Filter Restriction, Hydraulic Oil Temperature, Parking Brake Engaged, Engine Emission System*
- Adjustable Vinyl Seat
- Fold In Ergonomic Contoured Armrest
- Control Interlock System, when operator leaves seat or armrest raised: *Hydraulic System Disables, Hydrostatic Transmission Disables, Parking Brake Engages*
- ROPS Cab, Open, Tilt Up
- FOPS, Level I
- Top and Rear Windows
- Floor Mat
- Interior Rearview Mirror
- 12 volt Electric Socket
- Horn
- Hand (Dial) Throttle, Electronic
- Adjustable Joystick Controls
- Anti-theft Security System with 6-button Keypad
- Storage Compartment with Netting

OPTIONAL ATTACHMENTS

- External Counterweights
- Variable Speed Demand Fan
- Beacon, Rotating
- Engine Block Heater – 120V
- Oil, Hydraulic, Cold Operation
- Paint, Custom
- Product Link™, Cellular
- Advanced Display: Full Color, 5 in LCD screen, Advanced Multi-operator Security System, On-screen Adjustments for Implement Response, Hystat Response, and Creep Control; Rearview Camera Ready
- Advanced Display: Rearview Camera Included
- Work Tool Return to Dig and Work Tool Positioner
- Bluetooth Radio with Microphone (AM/FM/Weather Band Receiver with USB and Auxiliary Input Jack)

COMFORT PACKAGE (*must select one of the following*)

- Open ROPS (C0): *Static Seat (No Foot Throttle, Headliner, Heater or Door)*
- Open ROPS (C1): *Foot Throttle, Headliner, Cup Holder, and choice of Seat (Mechanical Suspension or High Back, Heated, Air Ride Seat) (No Heater or Door)*
- Enclosed ROPS with Heater (C2): *Foot Throttle, Headliner, Heater and Defroster, Side Windows, Cup Holder, Radio Ready, choice of Seat (Mechanical Suspension or High Back, Heated, Air Ride Seat) and Door (Glass or Polycarbonate)*
- Enclosed ROPS with A/C (C3): *C2 + Air Conditioner*

POWER TRAIN

- Cat C3.3B, Turbo Diesel Engine, Meeting U.S. EPA Tier 4 Final (EU Stage IIIB) Emission Standards
- Air Cleaner, Dual Element, Radial Seal
- S-O-SSM Sampling Valve, Hydraulic Oil
- Filters, Cartridge-type, Hydraulic
- Filters, Cartridge-type, Fuel and Water Separator
- Radiator/Hydraulic Oil Cooler (side-by-side)
- Spring Applied, Hydraulically Released Parking Brakes
- Hydrostatic Transmission
- Four Wheel Chain Drive

OTHER

- Engine Enclosure, Lockable
- Extended Life Antifreeze, -36° C (-33° F)
- Machine Tie Down Points (6)
- Support, Lift Arm
- Hydraulic Oil Level Sight Gauge
- Radiator Coolant Level Sight Gauge
- Radiator, Expansion Bottle
- Cat ToughGuard™ Hose
- Auxiliary, Hydraulics, Continuous Flow
- Heavy Duty, Flat Faced Quick Disconnects with Integrated Pressure Release
- Split D-Ring to Route Work Tool Hoses Along Side of Left Lift Arm
- Electrical Outlet, Beacon
- Belly Pan Cleanout

236D Skid Steer Loader

For more complete information on Cat products, dealer services, and industry solutions, visit us on the web at www.cat.com

© 2013 Caterpillar Inc.
All Rights Reserved
Printed in U.S.A.

Materials and specifications are subject to change without notice. Featured machines in photos may include additional equipment. See your Cat dealer for available options.

CAT, CATERPILLAR, SAFETY.CAT.COM, their respective logos, "Caterpillar Yellow" and the "Power Edge" trade dress, as well as corporate and product identity used herein, are trademarks of Caterpillar and may not be used without permission.

AEHQ7005-01 (11-13)
Replaces AEHQ7005
(NACD, EU)

