

) EYE-LCD4600-SN

Intelligent modular Concept for individual Requirements

) NEW EYE-LCD4600M/W-SN WITH ULTRA-SLIM BEZEL

New EYE-LCD4600M/W-SN – The perfect choice for “seamless” video walls.

-) Especially designed for modular LC-based video walls
-) Gap screen-to-screen measures only 7.3 mm
-) Native WXGA resolution (1366 x 768 px)
-) Internal scaler for video wall configurations up to 10 x 10 displays
-) Best brightness and contrast



The new EYE-LCD4600-SN:
Narrow bezels for optimal viewing

) INNOVATIVE DISPLAYS FOR VIDEO WALLS

With the **new EYE-LCD4600M/W-SN**, eyevis presents the latest generation of its LCD modules for video wall applications. The outstanding feature of the new displays is their super-slim bezel which allows composition of modular video walls with a **gap from screen to screen of only 7.3 mm**.

The new displays have a screen diagonal of 46" (116 cm) and **native WXGA resolution (1366x768 Pixel)**. The internal scaler allows 'tiled' video walls up to a configuration of 10x10 displays.

Like the preceding versions of eyevis EYE-LCD M/W series, the new EYE-LCD4600M/W-SN provides numerous features which make them a first choice for LCD video walls. The M-version of the displays includes a **stacking frame** which allows fast and simple mounting of video walls or the installation in display racks.

eyevis provides a range of installation possibilities for the displays from the EYE-LCDM/W-SN series, including customisable racks, wall mounts, and further installation options. As a provider of complete one-stop large screen solutions, eyevis provides also graphics controllers, wall management software and a comprehensive range of accessories.



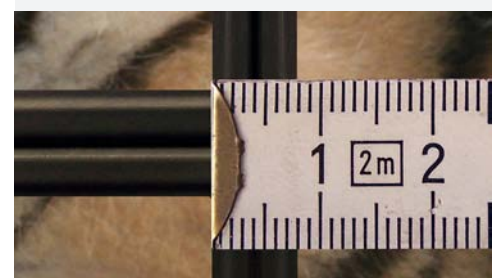
) ADVANTAGES

The latest development of LCD technology allows a further reduction of the display bezel. **The gap between two EYE-LCD4600M/W-SN displays in a modular video wall measures only 7.3 mm.**

The device has a **robust metal housing** which allows their installation in any environment. Even frequent mounting and demounting like on shows and events is possible without harming the displays.

The Special ventilation concept of the displays and further additional security features minimize the danger of image retention effects which may occur on every LC display when static image content is displayed for a longer period of time.

-) **Perfect for professional video walls in continuous operation**
-) **Perfect for shows and events**
-) **Special stacking frame for fast and simple installation**



) EYE-LCD4600-SN

- eyevis Super Narrow Bezel Displays

) TECHNICAL SPECIFICATIONS

LCD Display

Technology:	S-PVA TFT
Display Resolution:	1366 x 768 Pixel (WXGA)
Pixel Pitch:	0.7455 mm (H/V)
Backlight MTBF:	50 000h

Display Characteristics

Colours:	8 Bit / 16.7 million
Aspect Ratio:	16:9
Viewing Angle:	H 178° / V 178°
Response Time:	8 ms
Contrast Ratio:	3000 : 1
Brightness:	typ. 500 cd/m ² (max. 700 cd/m ²)

Connectors

Inputs:	Power Supply 100-250V 50/60Hz 2 x DVI IN (DVI) 2 x RGB IN (HD15 + DVI) 2 x Composite Video (BNC) 1 x S-Video (Mini-DIN 4pol) 2 x AUX (RJ45 / Mini Jack 3.5 mm) 1 x IR (Mini Jack 2.5 mm) 1 x PS/2 (Keyboard)
Outputs:	1 x DVI-D

Dimensions

Dimensions: (WxHxD)	4600W-SN: 1025.7 x 579.8 x 128.1 mm
	4600M-SN: 1025.7 x 579.8 x 298.1 mm
Bezel Width:	2.7 mm bottom/right, 4.6 mm top/left (Screen-to-Screen: 7.3 mm)

Weight

4600W (Display)	30 kg
4600M (Display+Stacking frame)	40 kg

Environmental

Power Consumption:	300 Watt
DPMS:	< 1 Watt
Thermal Load:	230 Watt
Temperature:	typ. 0 - 40 °C
Humidity:	typ. 25 - 60 % (max. 90% RH)

Certificates

EMI	CE
ISO	ISO 13406/2 (pixel error class 2)

Options

Front-Service Option:	Special mechanism allowing front access to the displays. Individual modules can be dismantled even in the centre of modular video walls.
Wall Holder:	VESA 400 x 400 mm / 800 x 400 mm
Ambient Light Sensor:	Automatic adjustment to the ambient light conditions (e.g. day and night adjustment)
Input Option:	Component Video

) APPLICATIONS

- Control Rooms (e.g. for Video Surveillance)
- Board Rooms
- Show Rooms
- Conference Rooms
- POS/POI
- Trade Fairs / Events
- Trading Rooms

) FEATURES

- Almost unlimited number of cascable displays
- "Frameless" design, minimal gaps
- Low installation depth
- Slim design
- Best image quality

) STACKING FRAME FOR M-VERSION



) FRONT-SERVICE OPTION



) CONTACT

eyevis France SAS
Le Copernic
1, rue du grand étang
ZI du Petit Parc
78920 Ecquevilly - France
T : +33(0)1 30 71 93 90
F : +33(0)1 34 75 97 34

eyevis
PERFECT VISUAL SOLUTIONS