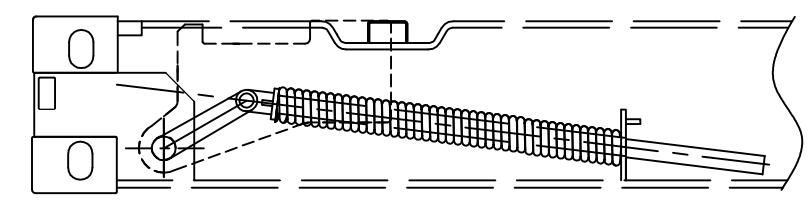
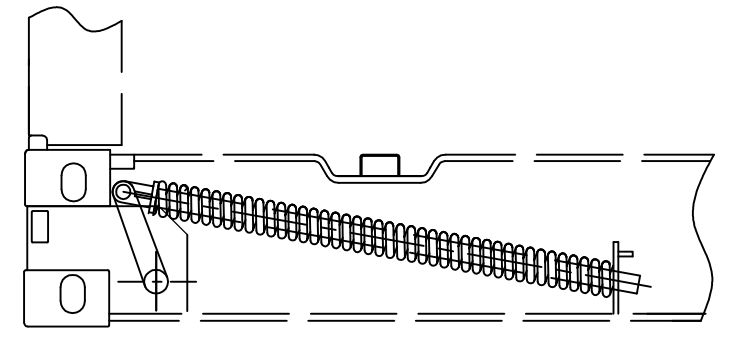
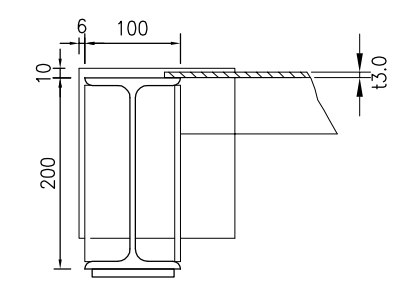
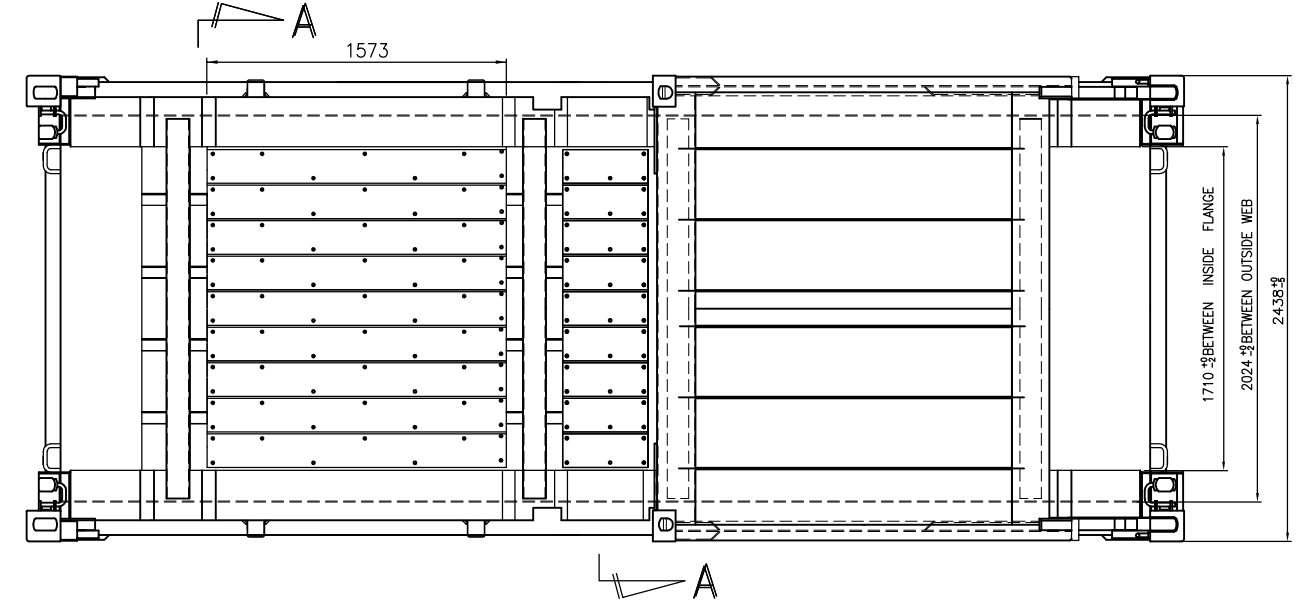
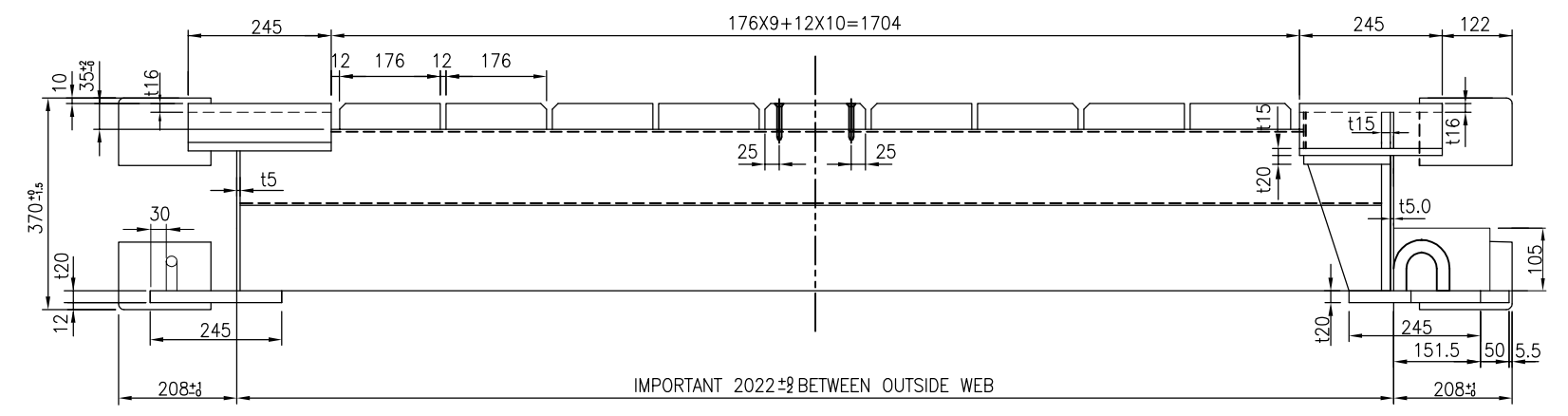
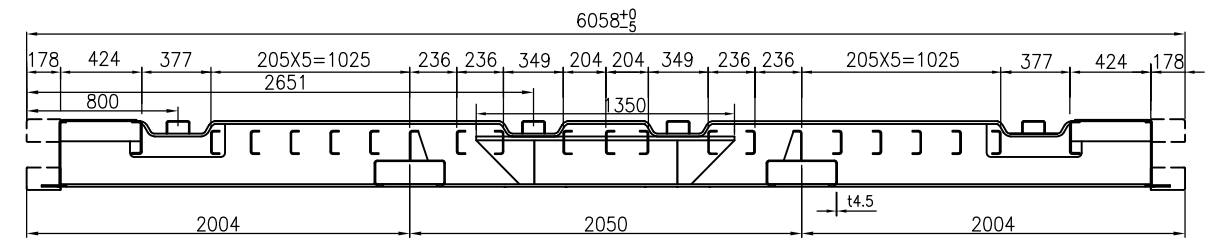


CLASSIFICATION		DIMENSION			
EXTERNAL	LENGTH	6058	+0/-5	20'	+0/-3/16"
	WIDTH	2438	+0/-5	8'	+0/-3/16"
	HEIGHT	2591	+0/-5	8' - 6"	+0/-3/16"
FOLDED HEIGHT		370	+0/-5	1' - 2 9/16"	+0/-3/16"
INTERNAL	LENGTH (BETWEEN END POSTS)	5638	+0/-10	18' - 5 61/64"	+0/-3/8"
	WIDTH (OVER BOTTOM SIDE RAIL)	2194	+0/-5	7' - 2 3/8"	+0/-3/16"
	HEIGHT (SIDE RAIL ADJACENT TO POST TO TOP CASTING)	2231	+0/-5	7' - 3 53/64"	+0/-3/16"
MAX. GROSS WEIGHT		34000 KGS		74950 LBS	
TARE WEIGHT (±2%)		2950 KGS		6500 LBS	
MAX. PAYLOAD		31050 KGS		68450 LBS	
STACKING TEST LOAD (7 HEIGH)		97200 KGS		214290 LBS	
RACKING	TRANSVERSE	15240 KGS		33600 LBS	
	LONGITUDINAL	7620 KGS		16800 LBS	



COMPRESSION-SPRING ASSEMBLY
SET INSIDE THE SIDE RAIL WEB

SECTION A-A

SECTION E-E

MARK	REV. DATE	SIGN	DETAIL OF REVISION	
TITLE GENERAL ARRANGEMENT				
APP'ED	DATE	2015.06.16	CUST. NAME	GDHD FLAT RACK 20'
VERIF'D	SCALE		SPEC NO.	SF256-SCA-A
DESIG'D	MODEL		GS-F256-SCA	
DRAWN	sally	DRWG. NO.	GS-F256-SCA-00	
GDHD GUANGDONG HYUNDAI CONTAINER CO.,LTD				
THIS DRAWING IS THE PROPERTY OF GUANGDONG HYUNDAI CONTAINER CO., LTD. IT SHALL NOT BE COPIED OR DUPLICATED OR SUBMITTED TO OUTSIDE PARTIES WITHOUT OUR WRITTEN CONSENT.				