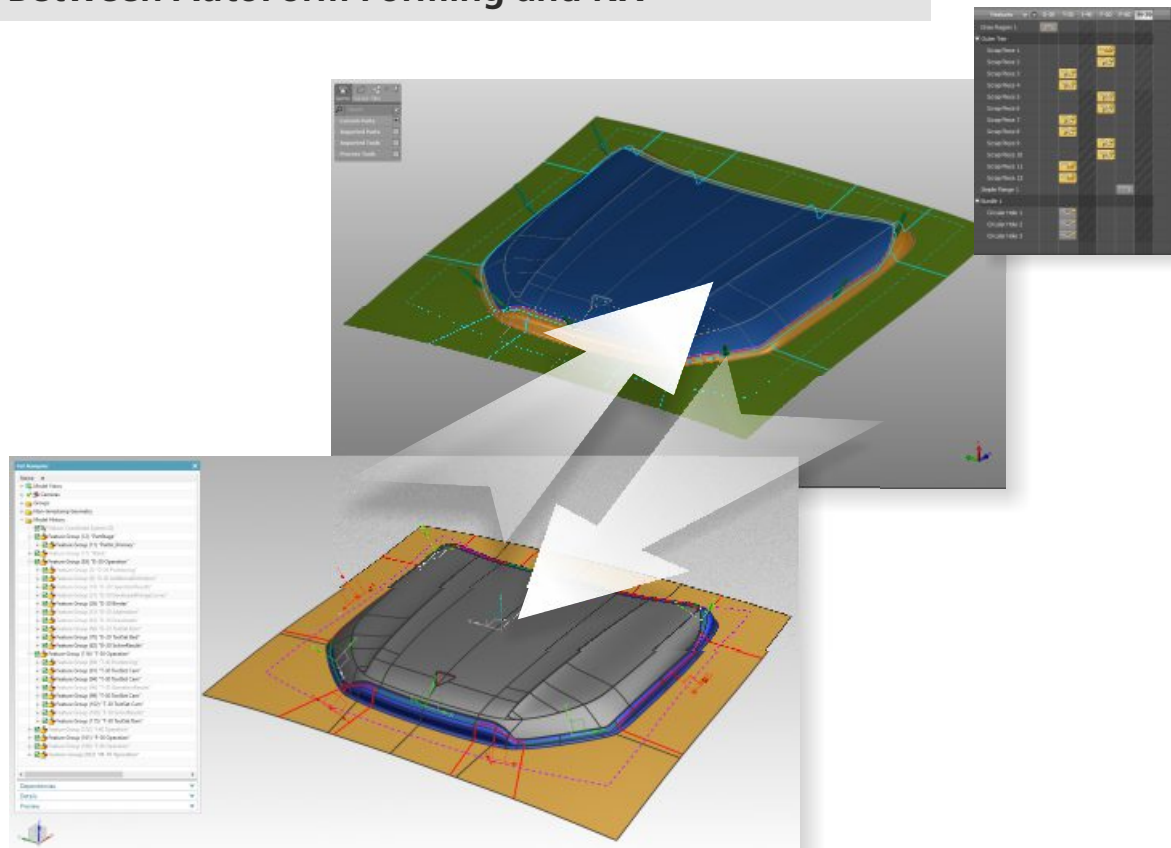


AutoForm-QuickLink^{forNX}

Software for Fast and Easy Data Interoperability
Between AutoForm Forming and NX



- ▶ Selective import and export of geometry and process data between AutoForm Forming and NX
- ▶ Improved data consistency, transparency and usability
- ▶ Speedup of CAD design process
- ▶ Efficient prevention of downstream problems and defects
- ▶ Supply chain support

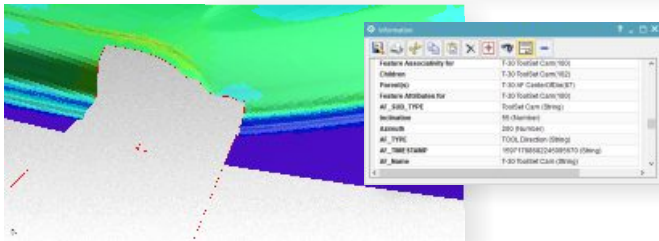
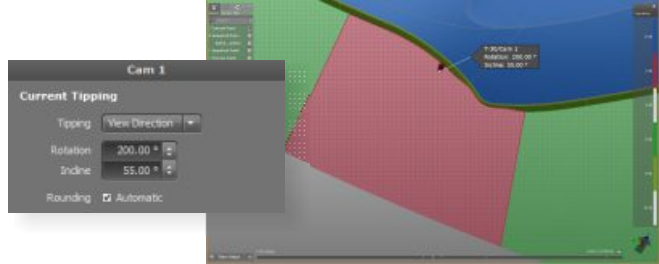


AutoForm-QuickLink^{forNX}

Bi-Directional Data Transfer Between AutoForm Forming and NX

AutoForm-QuickLink^{forNX} ensures seamless data exchange between AutoForm Forming and NX. As a result, process design departments are able to enhance their work efficiency through more effective collaboration with both in-house and external departments.

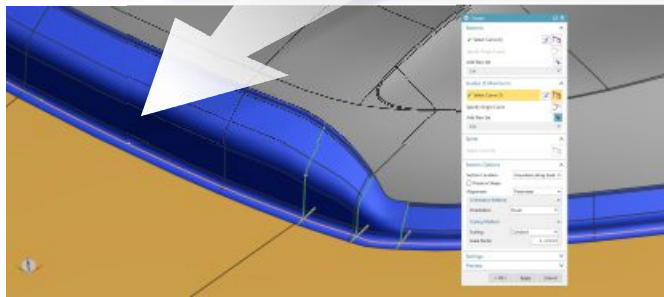
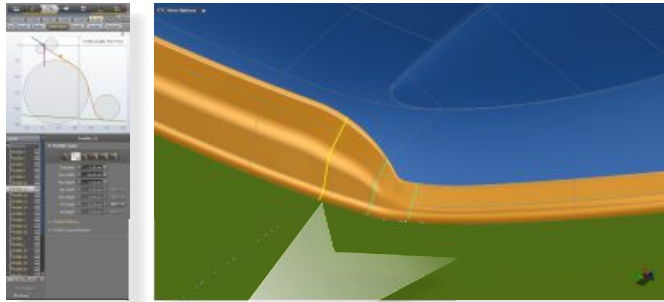
AutoForm-QuickLink^{forNX} enables users to easily export the process data from AutoForm Forming into NX. The exported data includes: concept geometry data such as surfaces (die, form and wiper tools), curves (profiles, drawbead lines and material zones) and points (pilot, sphere and spacer groups and clamps), project information, material information such as name and thickness, as well as process information such as operations, positioning and cam direction. In addition, users can export simulation results.



AutoForm-QuickLink^{forNX} allows for the easy transfer of process information, such as part position, tipping and cam direction, from AutoForm Forming to NX.

Based on the imported process data, the user can further design the process, in particular generate CAD quality surfaces using NX native functionalities. Process design results generated in NX can then be easily exported for the final validation in AutoForm Forming.

Due to the automatic and consistent naming of imported and exported features, AutoForm-QuickLink^{forNX} leads to a significant speedup of the CAD design process and efficiently prevents errors which may occur during manual import and export operations. AutoForm-QuickLink^{forNX} ensures efficient data exchange and improves data consistency, transparency and usability.



With AutoForm-QuickLink^{forNX}, addendum profiles can be imported from AutoForm Forming to NX and then used as a reference for the creation of surfaces.

AutoForm Engineering – Company Offices

Switzerland	Pfäffikon SZ	+41 43 444 61 61
Germany	Dortmund	+49 231 9742 320
The Netherlands	LB Capelle aan den IJssel	+31 180 668 255
France	Aix-en-Provence	+33 4 42 90 42 60
Spain	Barcelona	+34 93 320 84 22
Italy	Turin	+39 011 620 41 11
Czech Republic	Praha	+420 603 248 580
Sweden	Stockholm	+31 180 668 255
United States	Troy, MI	+1 888 428 8636
Mexico	Corregidora, Qro.	+52 442 225 1104
Brazil	São Bernardo do Campo	+55 11 4122 6777
India	Hyderabad	+91 40 4068 9999
China	Shanghai	+86 21 5386 1153
Japan	Tokyo	+81 3 6459 0881
Korea	Seoul	+82 2 2113 0770

© 2020 AutoForm Engineering GmbH, Switzerland.

AutoForm and other trademarks listed under www.autoform.com or trade names contained in this documentation or the Software are trademarks or registered trademarks of AutoForm Engineering GmbH. Third party trademarks, trade names, product names and logos may be the trademarks or registered trademarks of their respective owners. AutoForm Engineering GmbH owns and practices various patents and patent applications that are listed on its website www.autoform.com. Software and specifications may be subject to change without notice.

Publication QN-3-E



AUTOFORM
Forming Reality