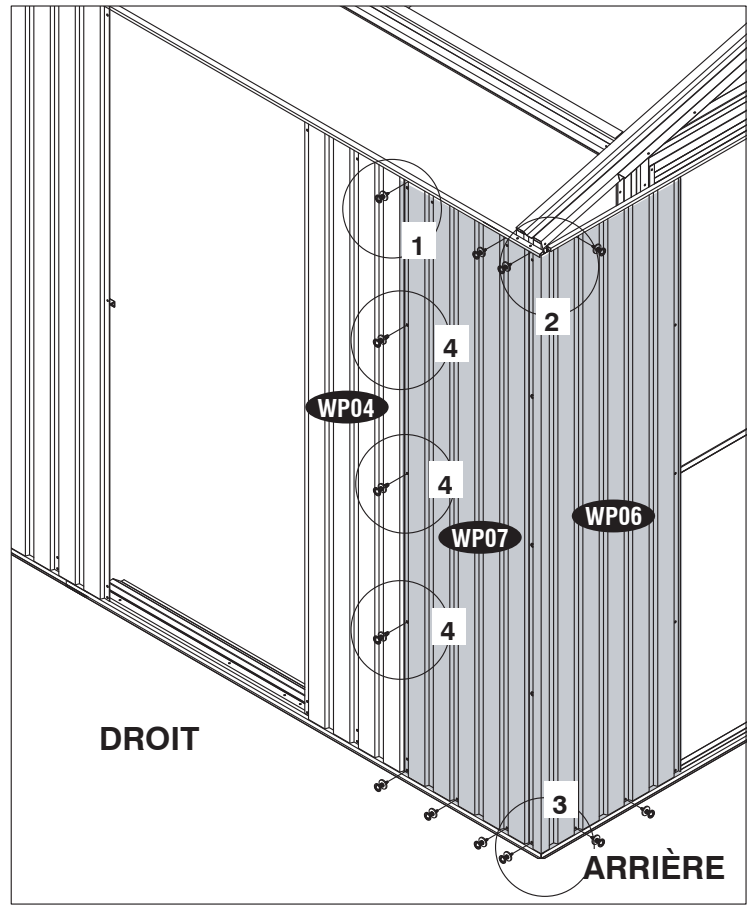
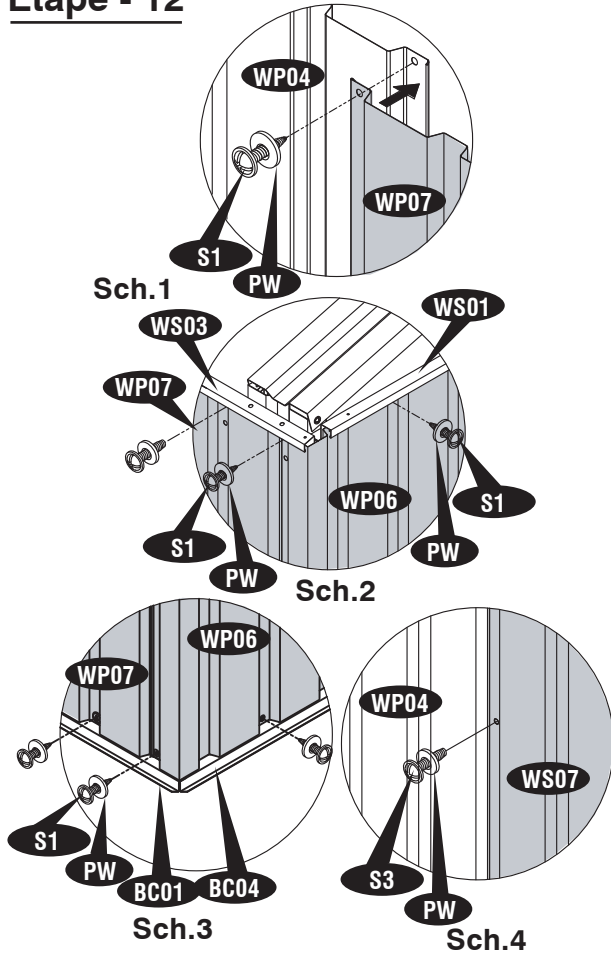
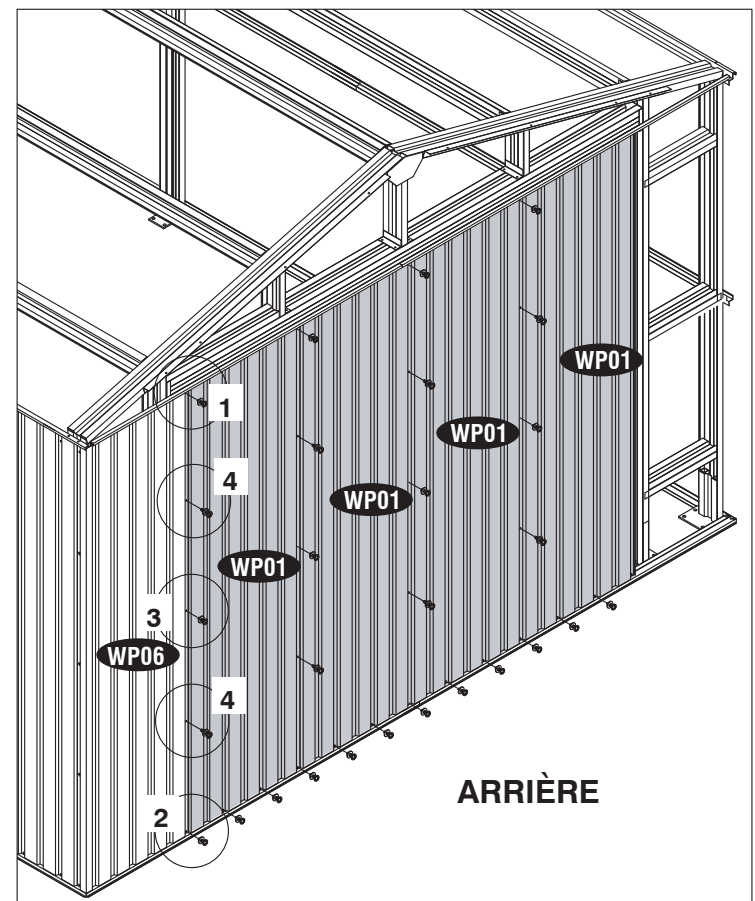
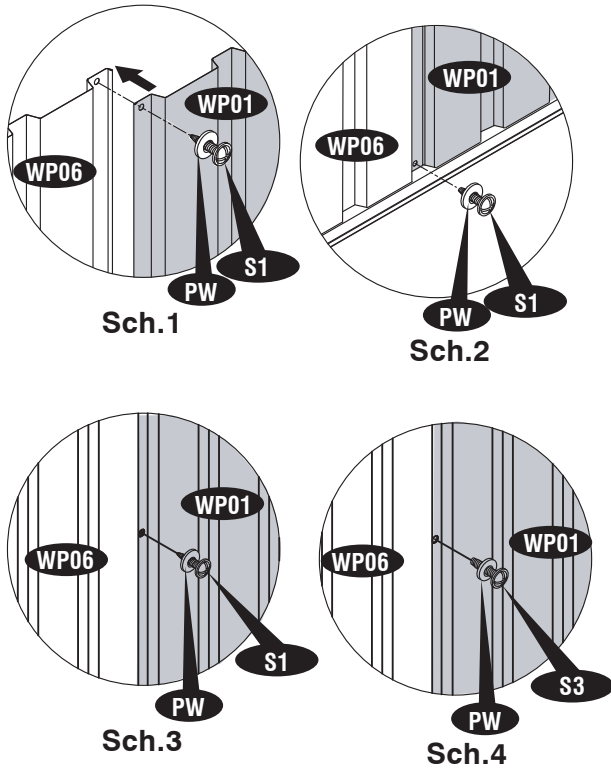


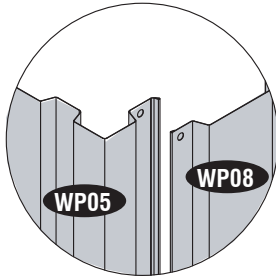
Étape - 12



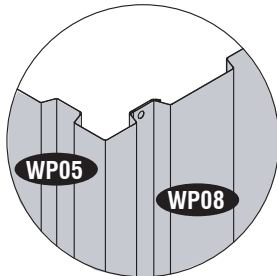
Étape - 13



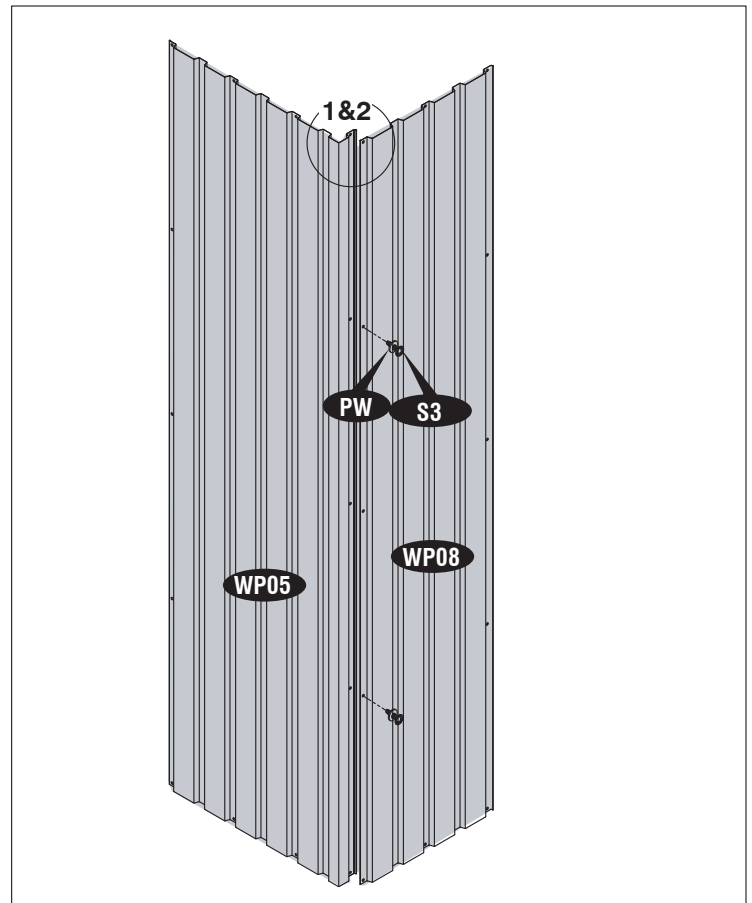
Étape - 14



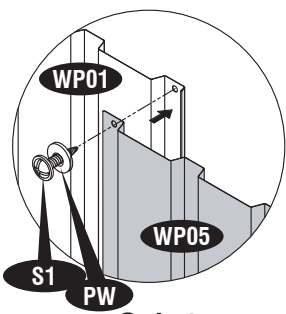
Sch.1



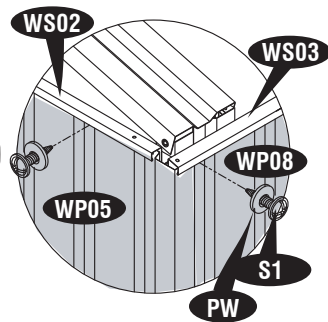
Sch.2



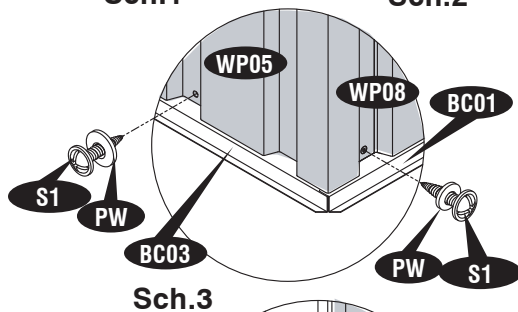
Étape - 15



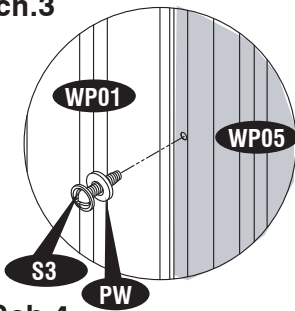
Sch.1



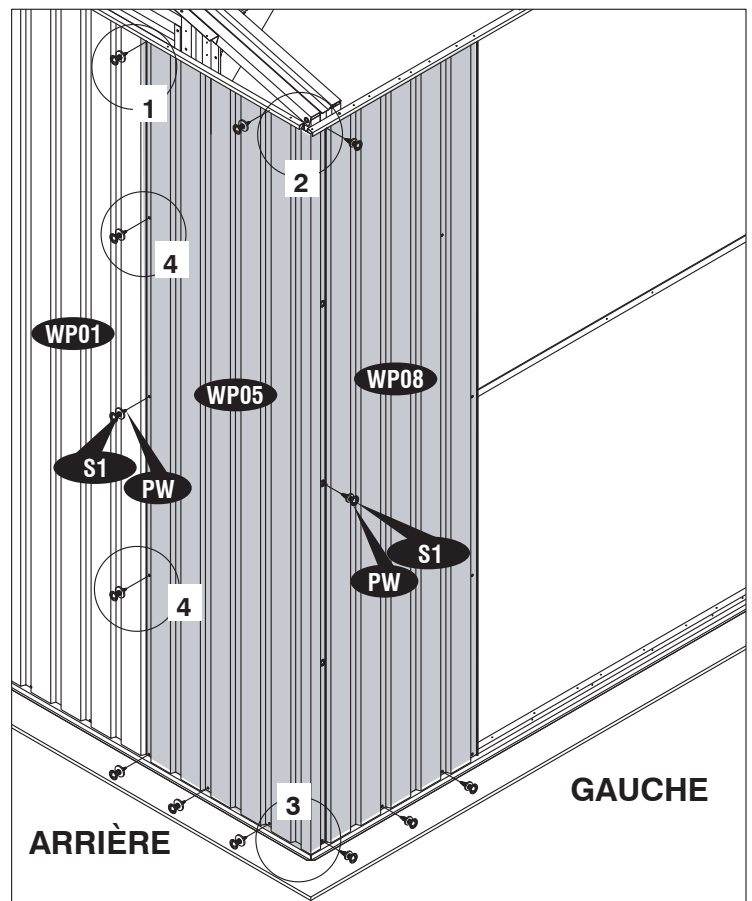
Sch.2



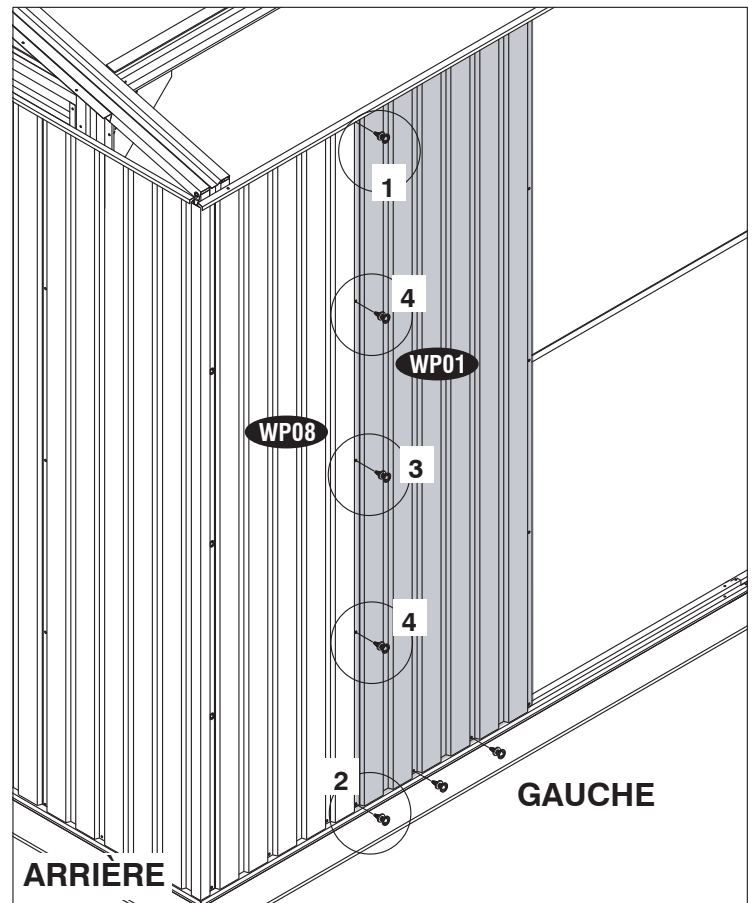
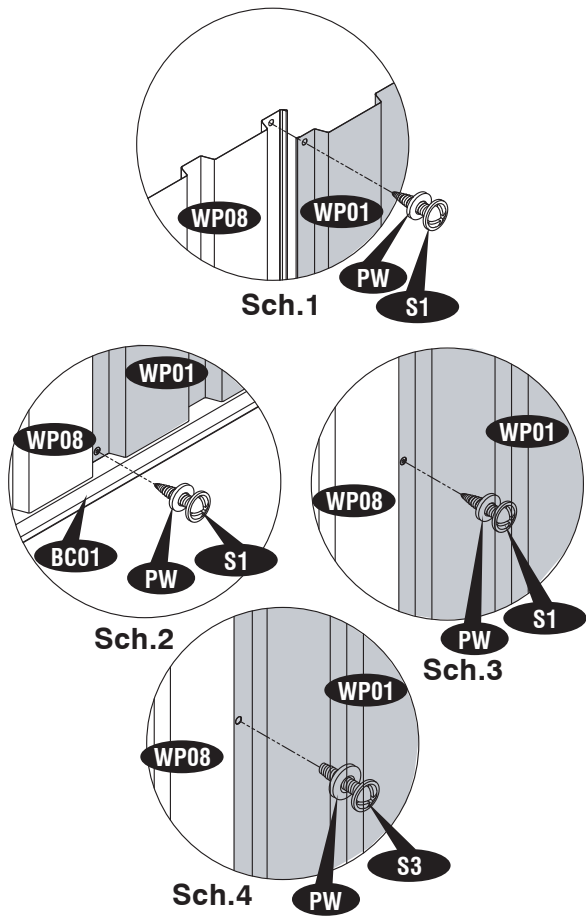
Sch.3



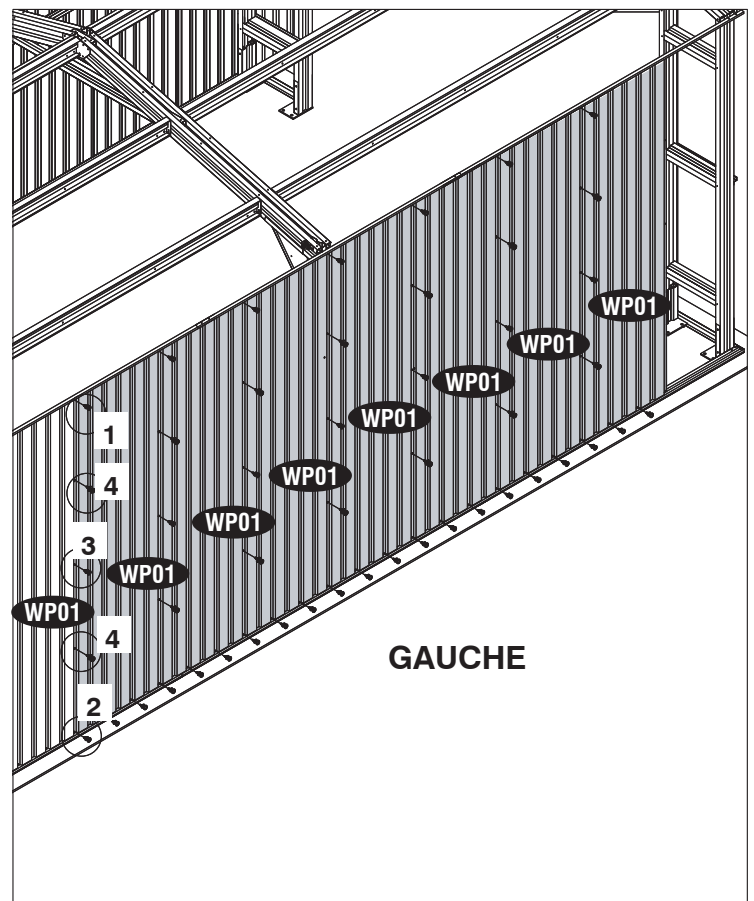
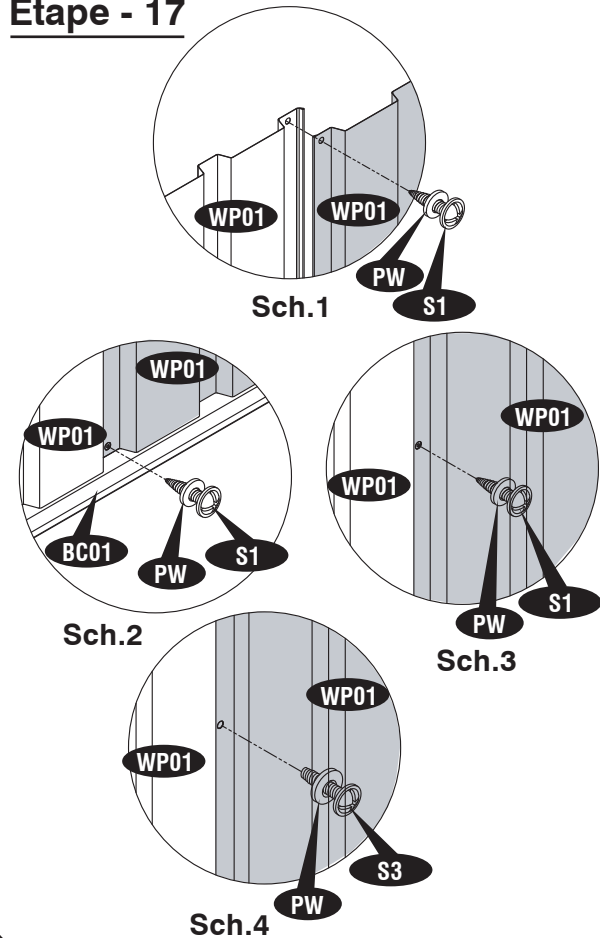
Sch.4



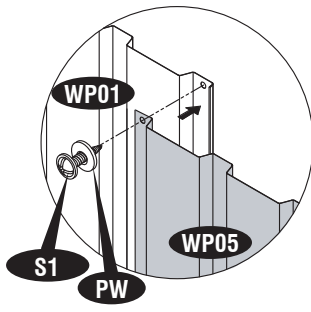
Étape - 16



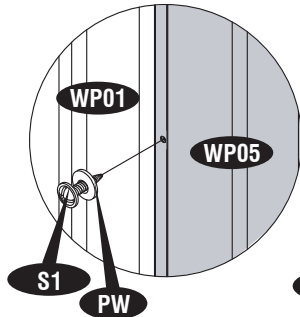
Étape - 17



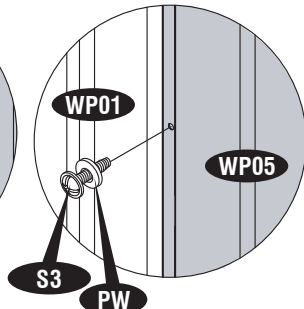
Étape - 18



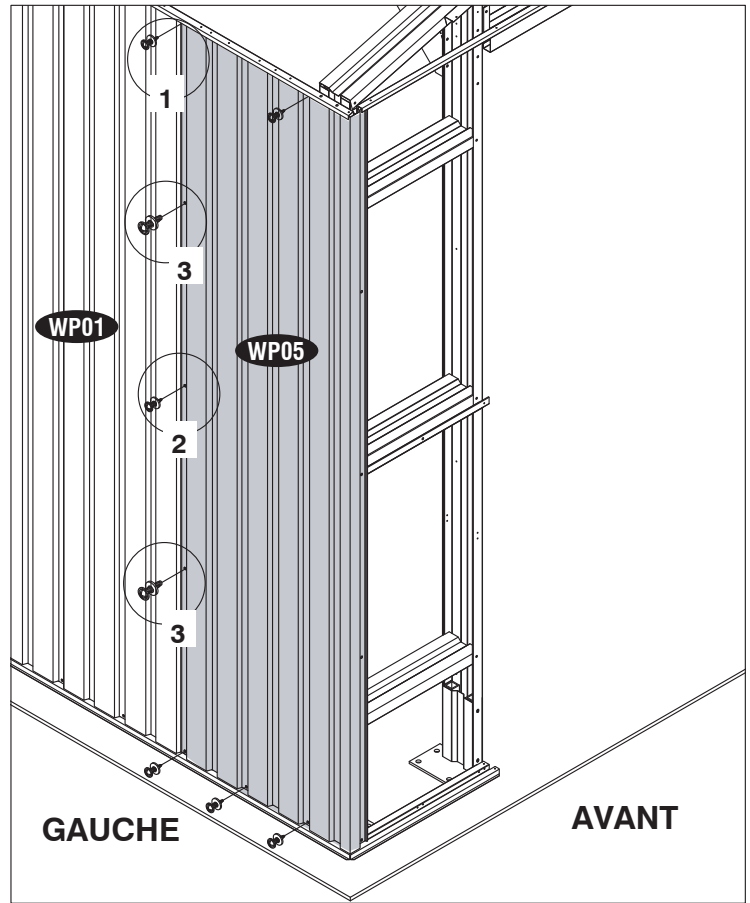
Sch.1



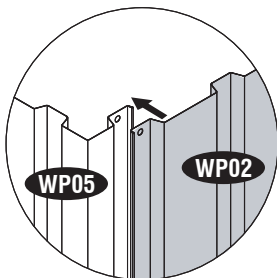
Sch.2



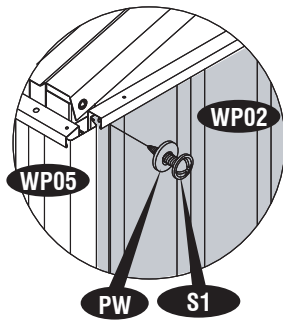
Sch.3



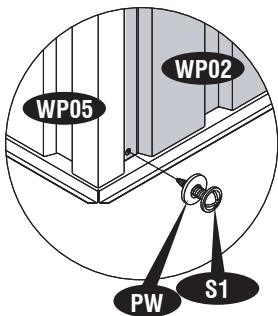
Étape - 19



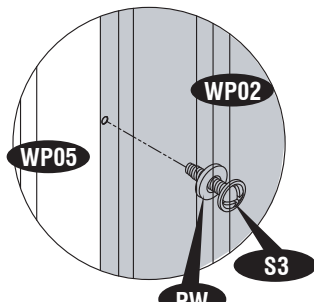
Sch.1



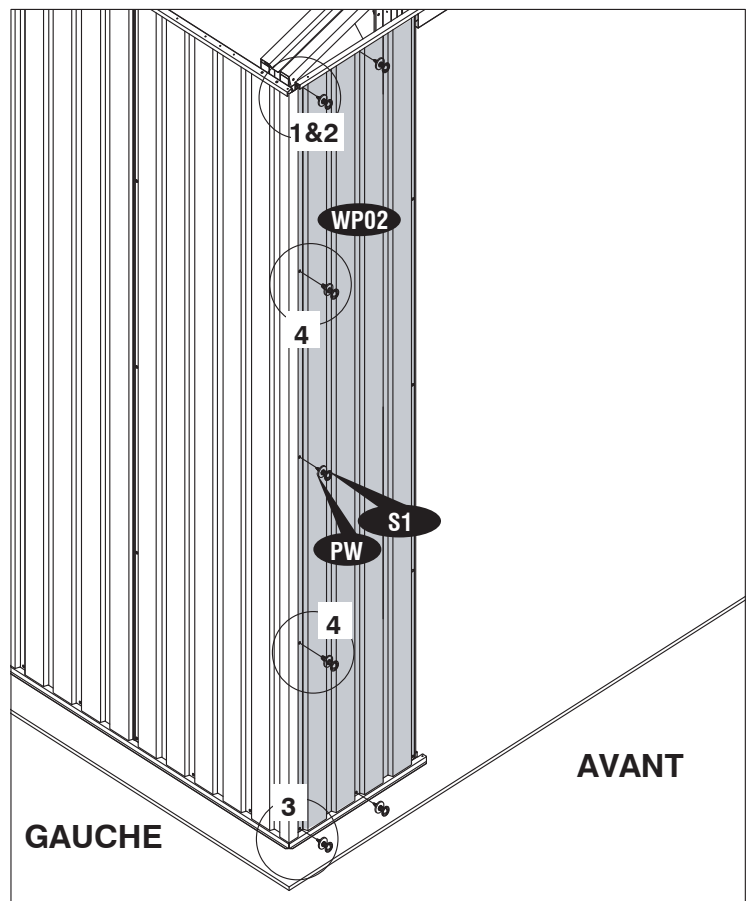
Sch.2



Sch.3

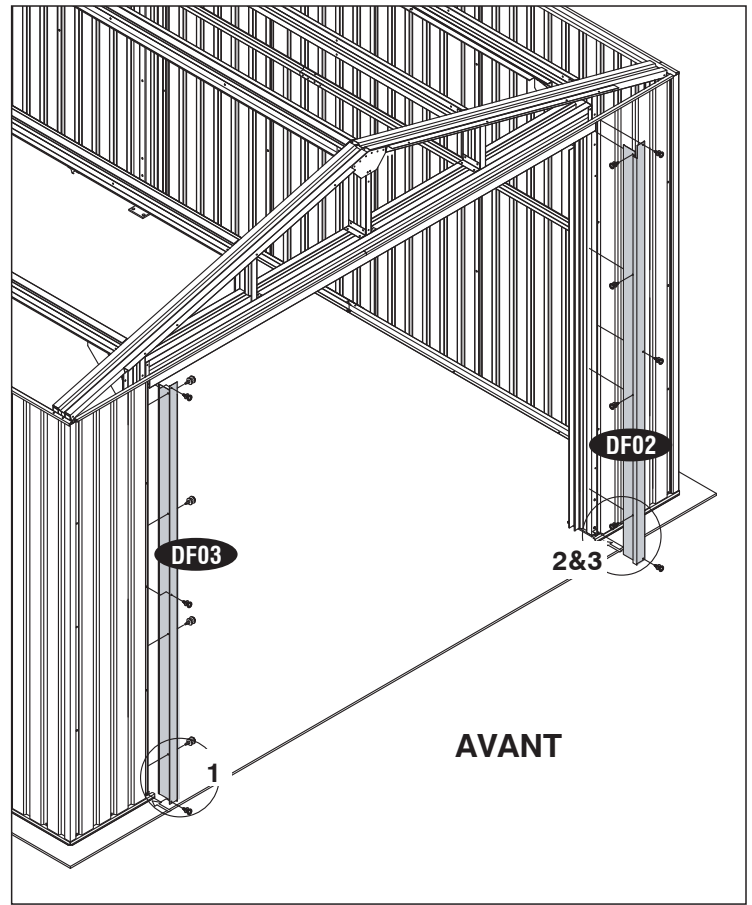
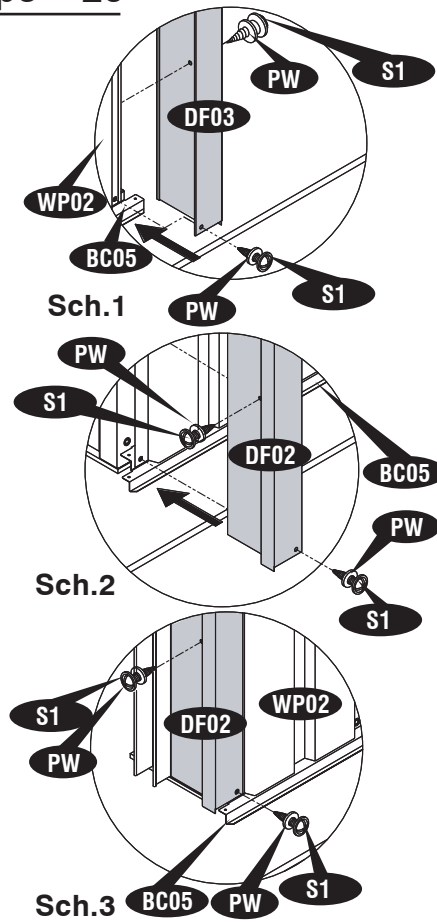


Sch.4

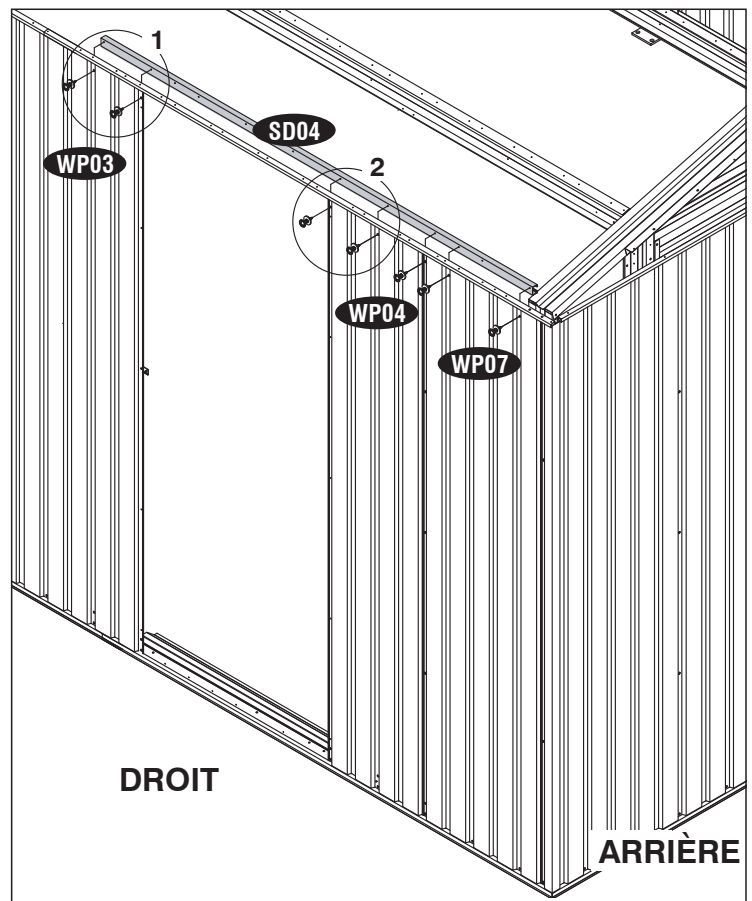
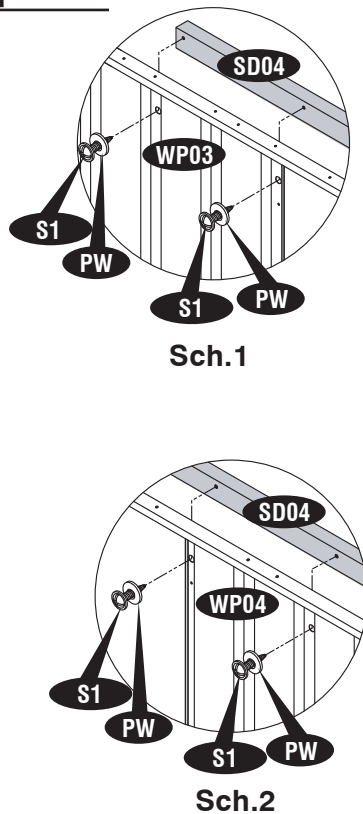


IMPORTANT: UTILISER LES GANTS POUR PREVENIR LES BLESSURES.

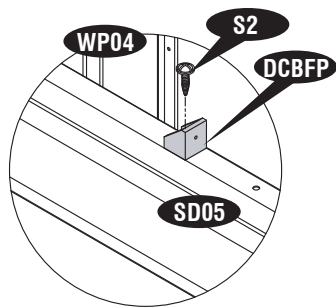
Étape - 20



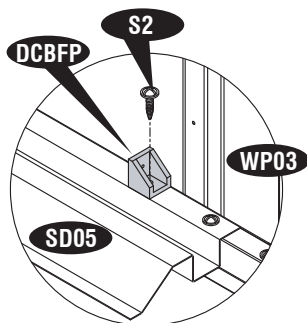
Étape - 21



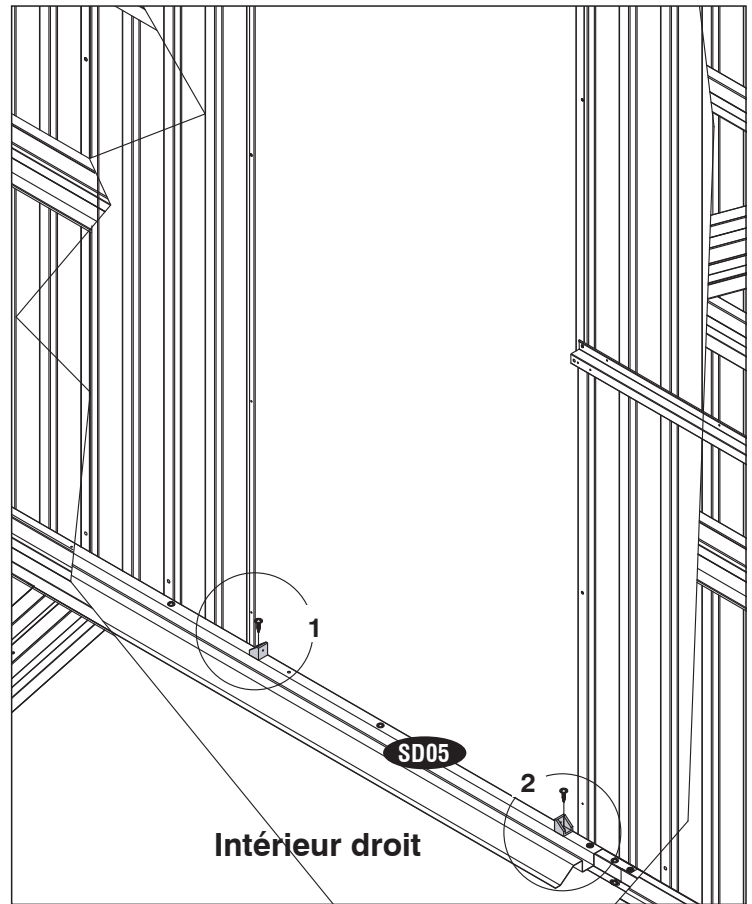
Étape - 22



Sch.1

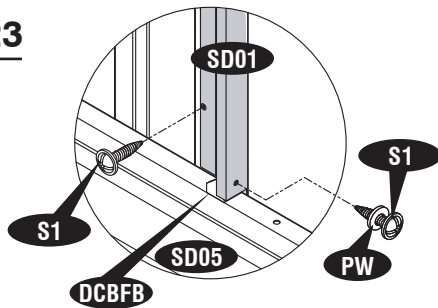


Sch.2

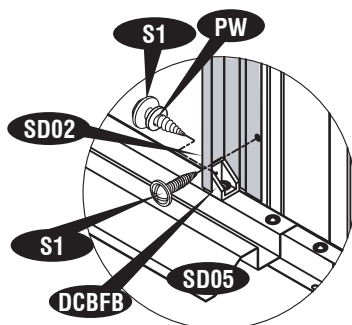


Intérieur droit

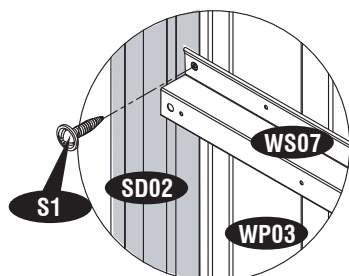
Étape - 23



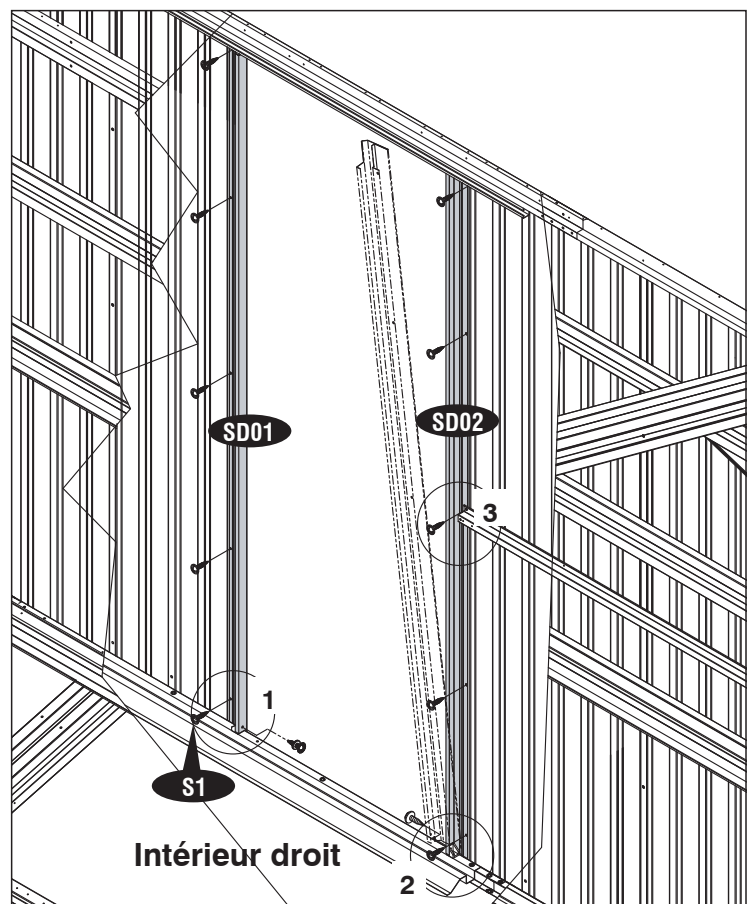
Sch.1



Sch.2

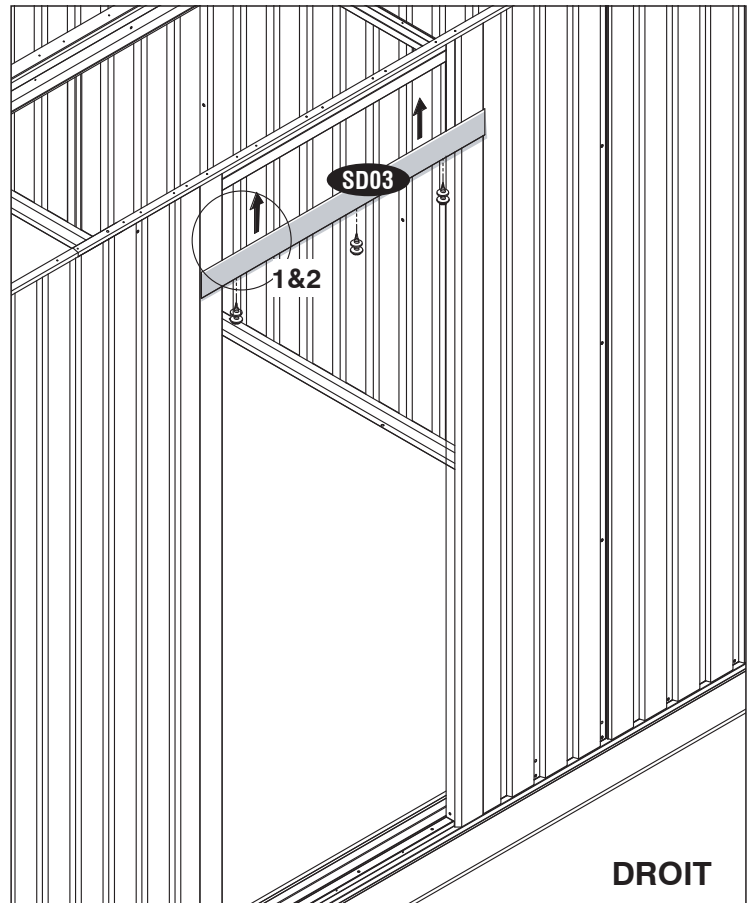
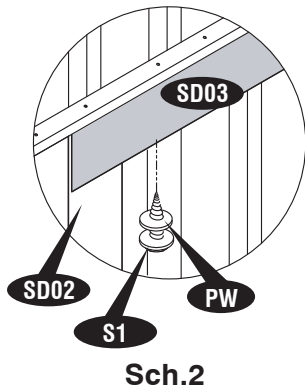
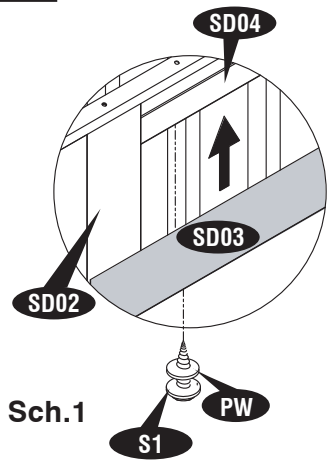


Sch.3



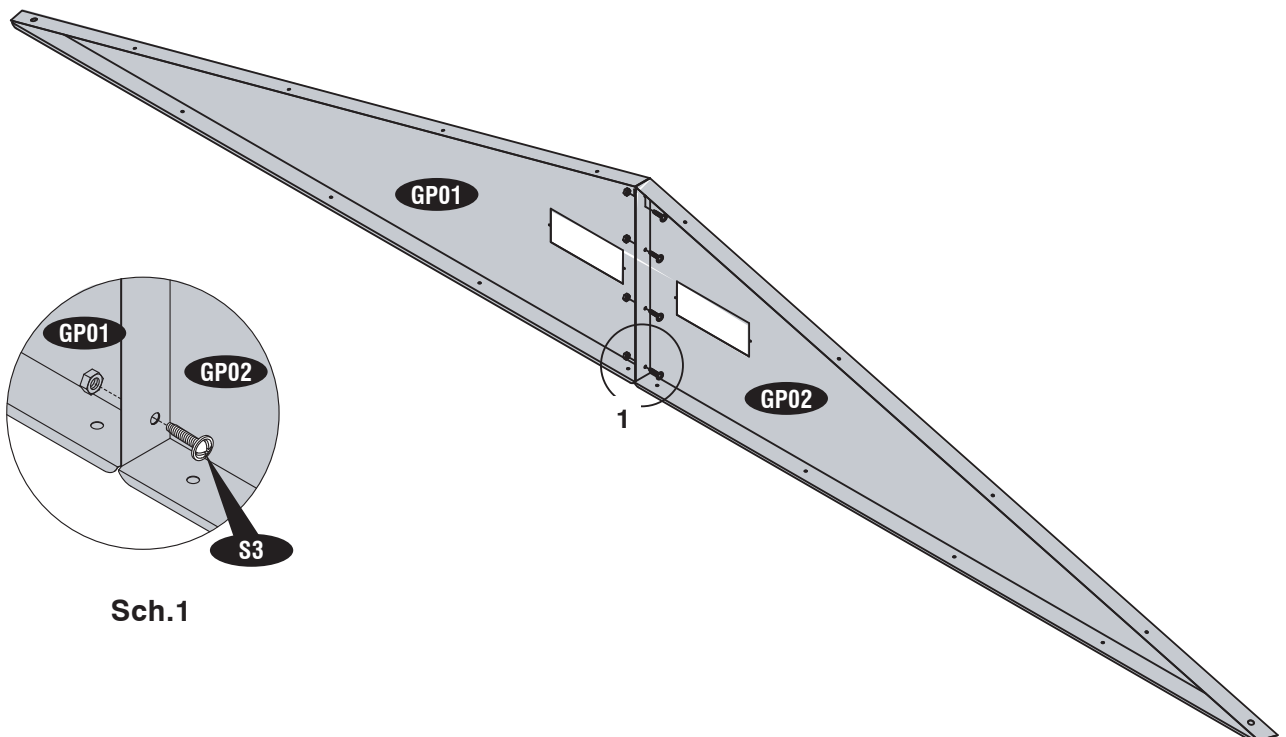
Intérieur droit

Étape - 24

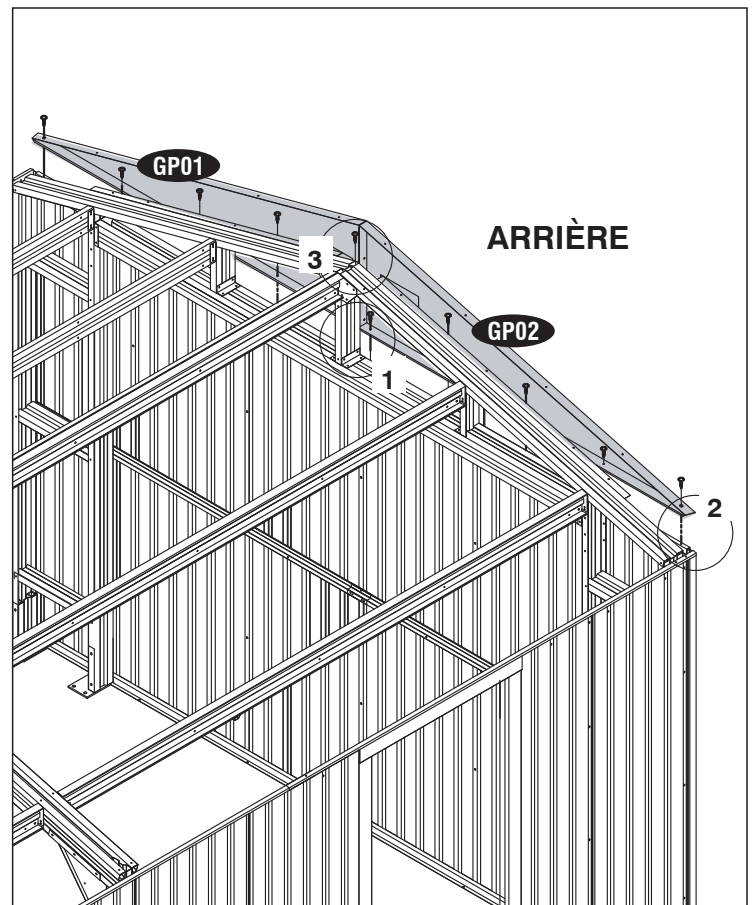
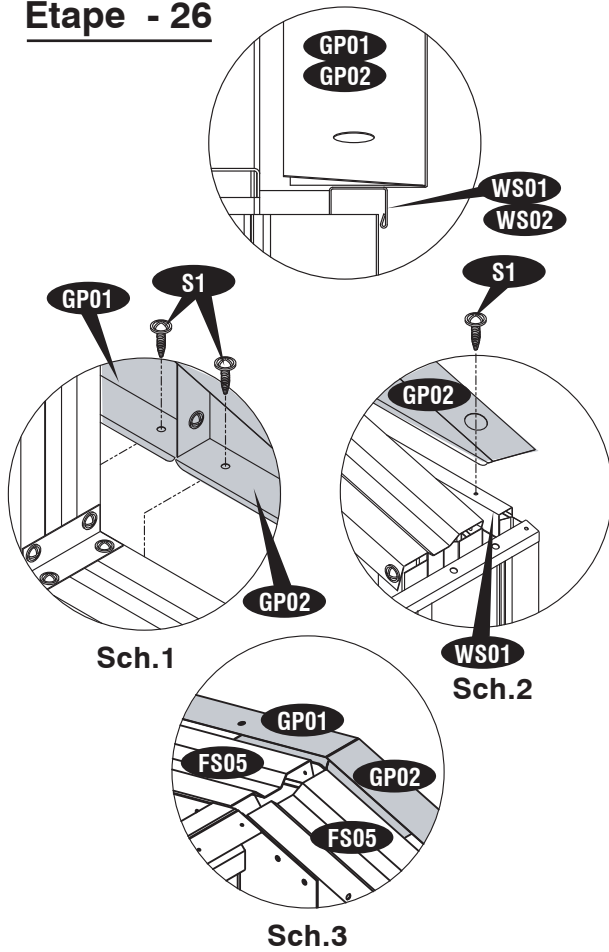


Étape - 25

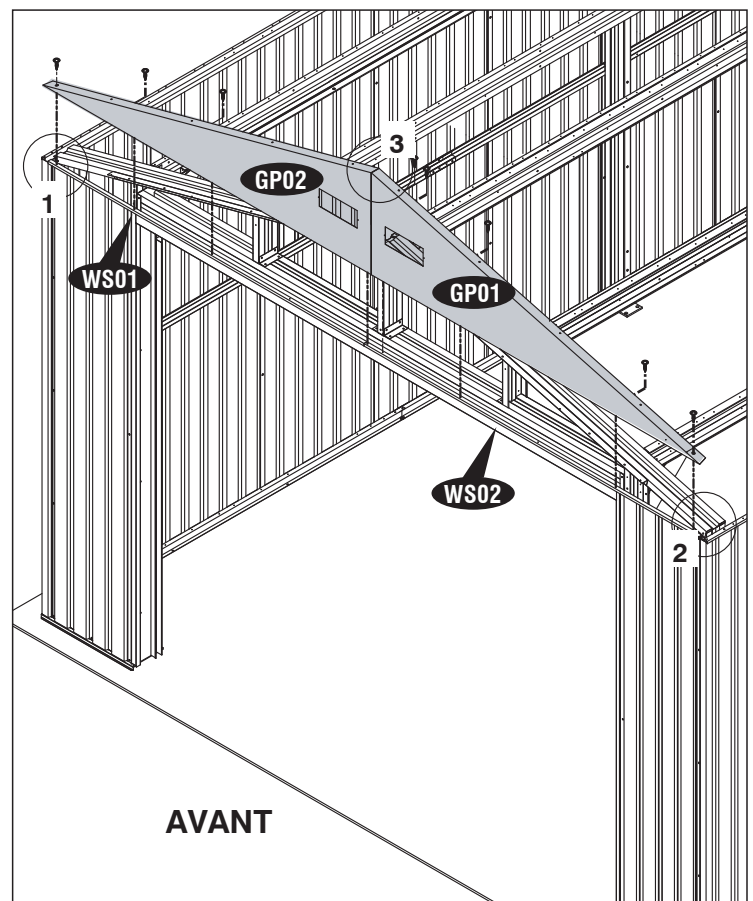
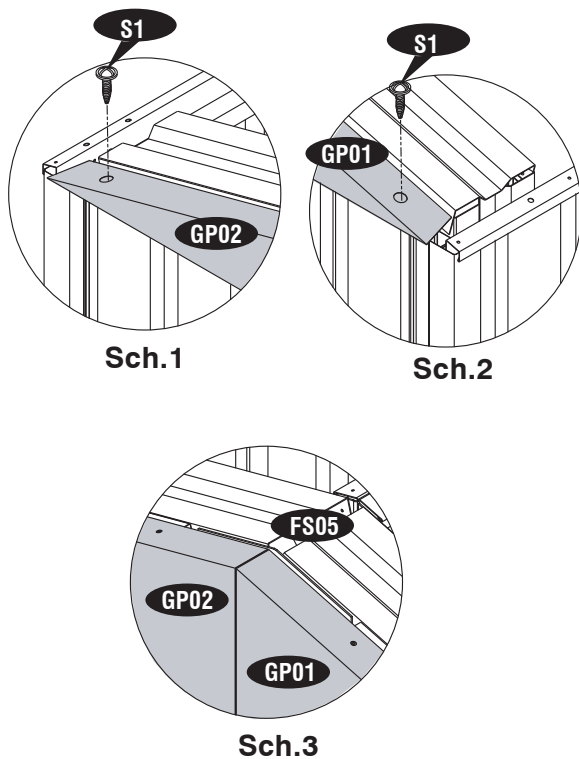
Faire 2 ensembles



Étape - 26



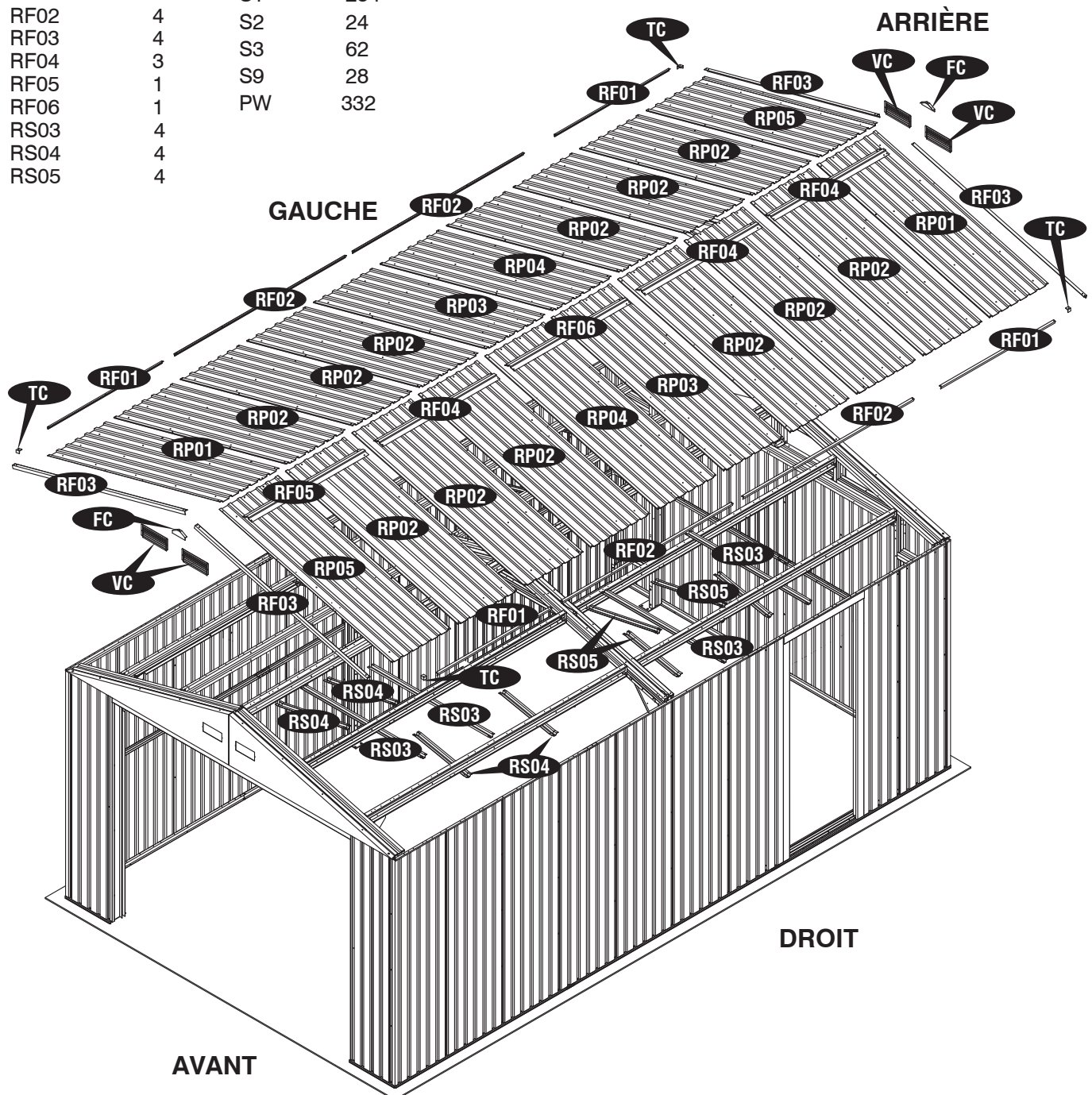
Étape - 27



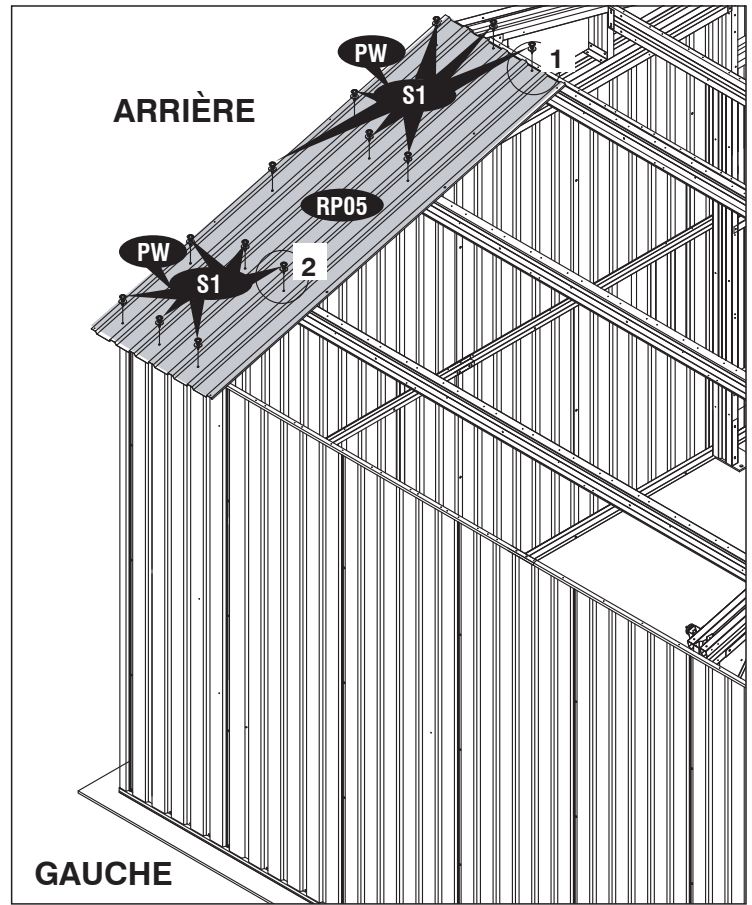
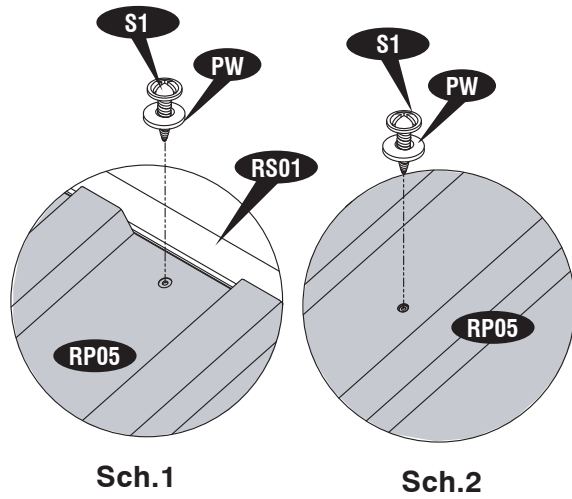
F. Assemblage et Installations des Portes

Pièces Nécessaires:

Code	QTÉ	Code	QTÉ
RP01	2	WST	8 Mètre
RP02	12	FC	2
RP03	2	VC	4
RP04	2	TC	4
RP05	2	S1	254
RF01	4	S2	24
RF02	4	S3	62
RF03	4	S9	28
RF04	3	PW	332
RF05	1		
RF06	1		
RS03	4		
RS04	4		
RS05	4		



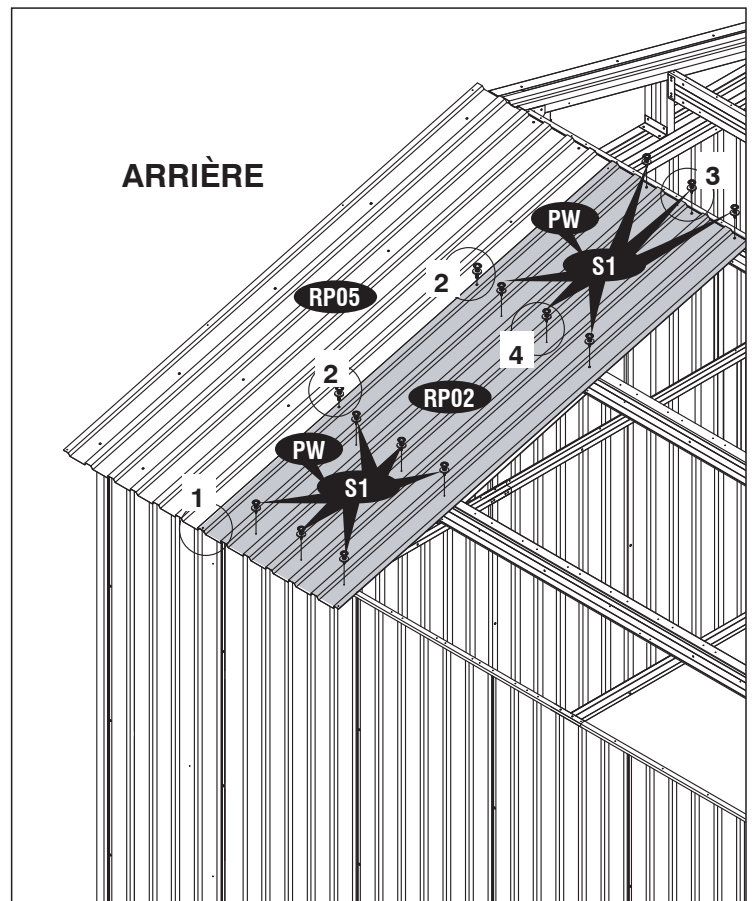
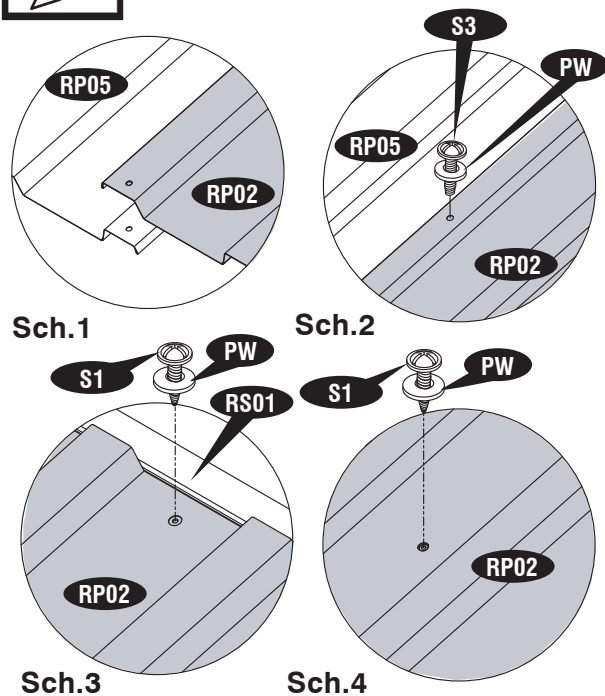
Étape - 1



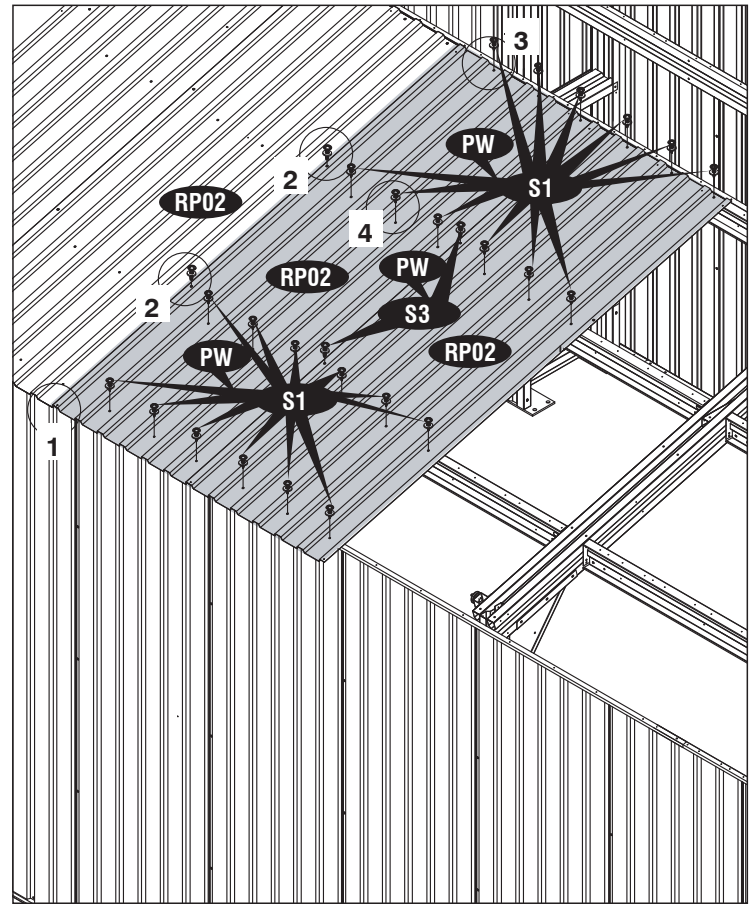
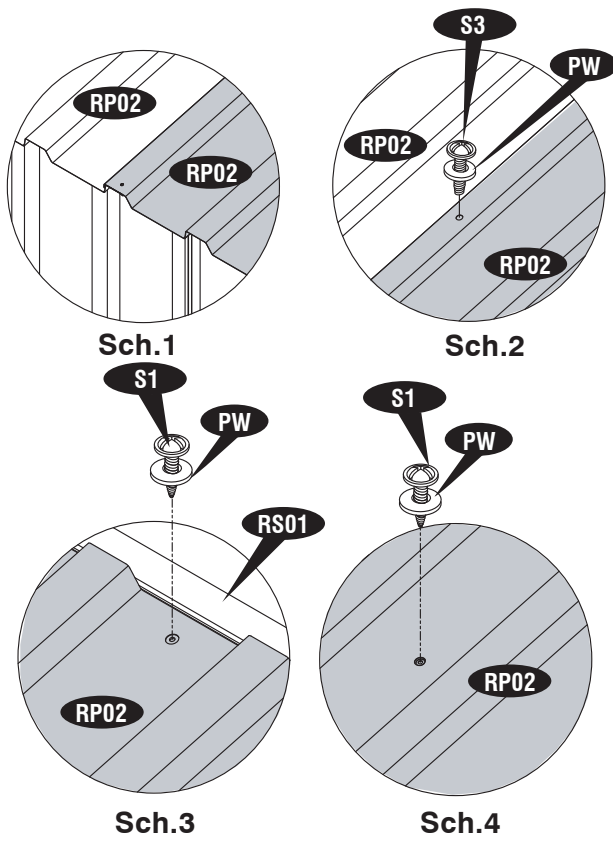
Étape - 2

Note *S'assurer que la position de recouvrement pour le panneau de toit est telle que montrée dans les dessins.*

Note *L'installation de panneau de toit en employant une échelle de l'intérieur aux panneaux manquants.*

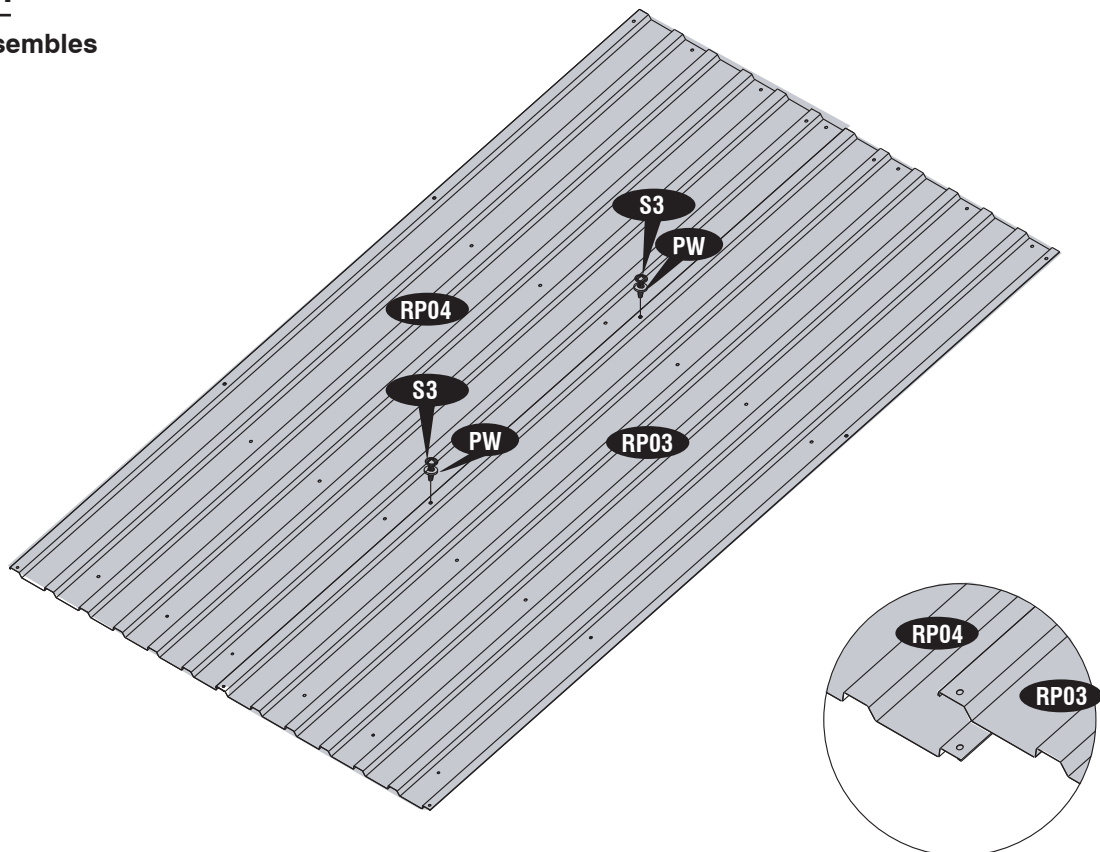


Étape - 3

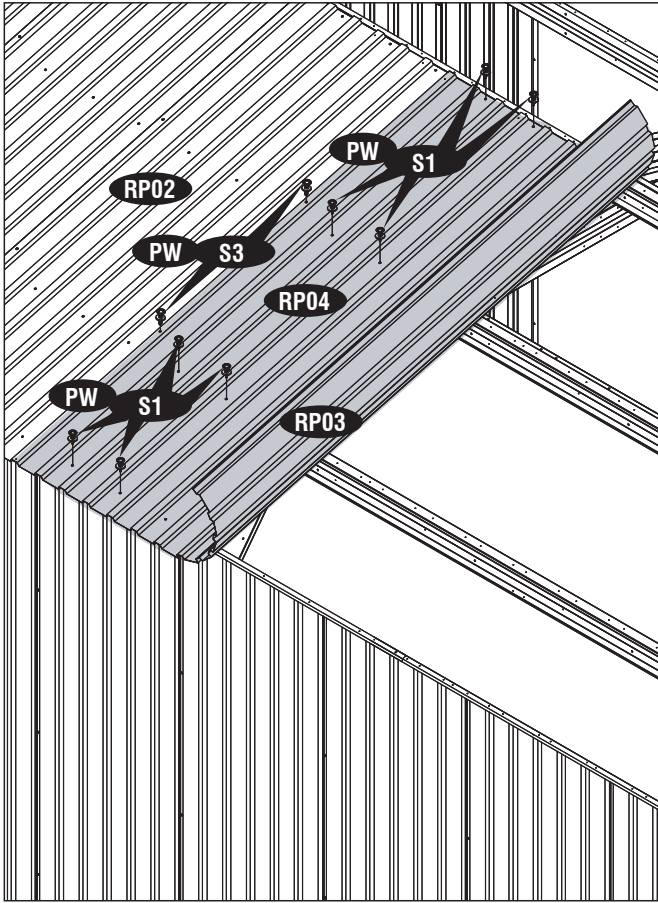


Étape - 4

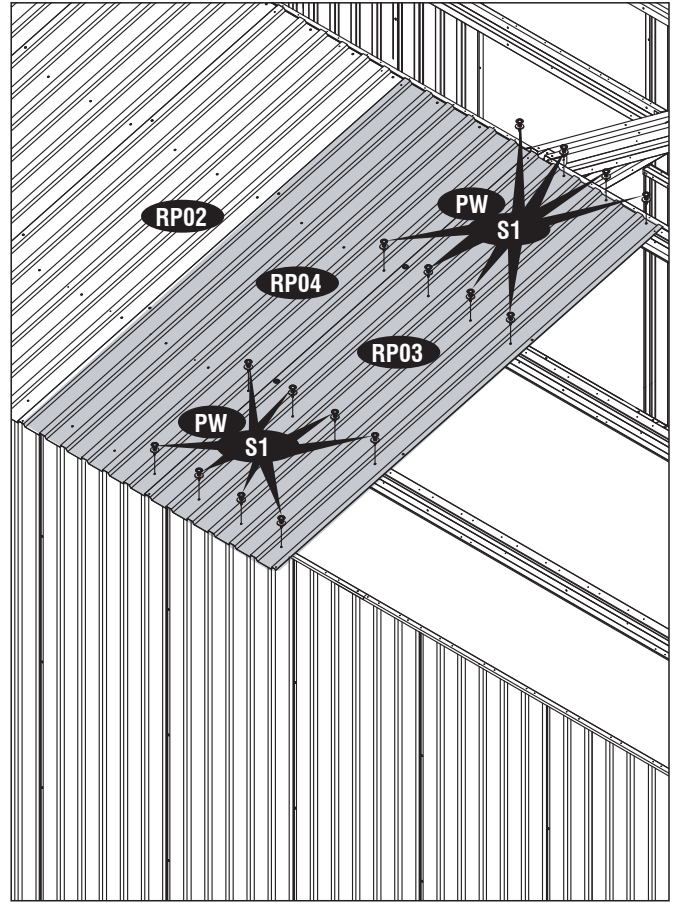
Faire 2 ensembles



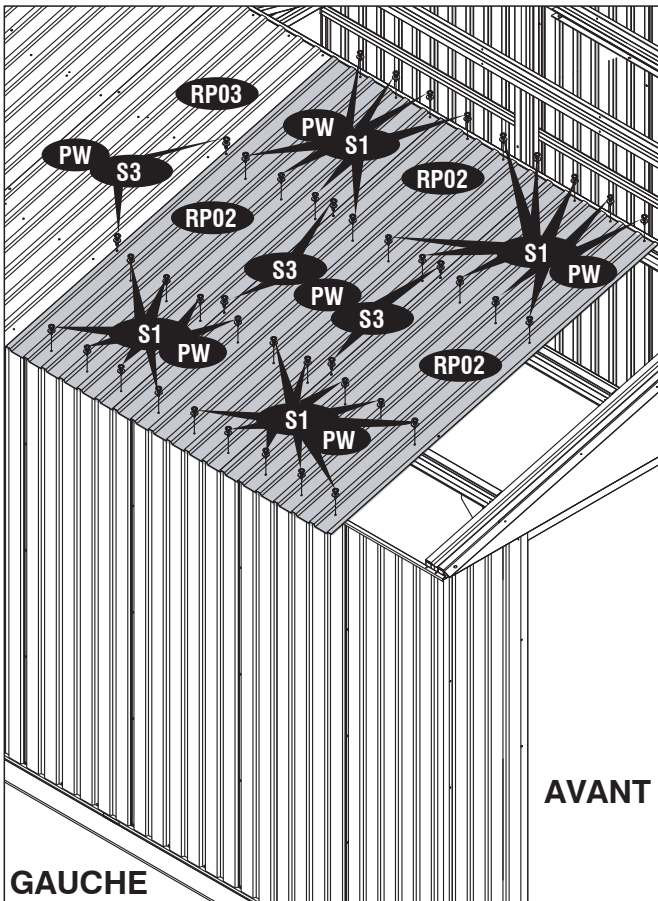
Étape - 5



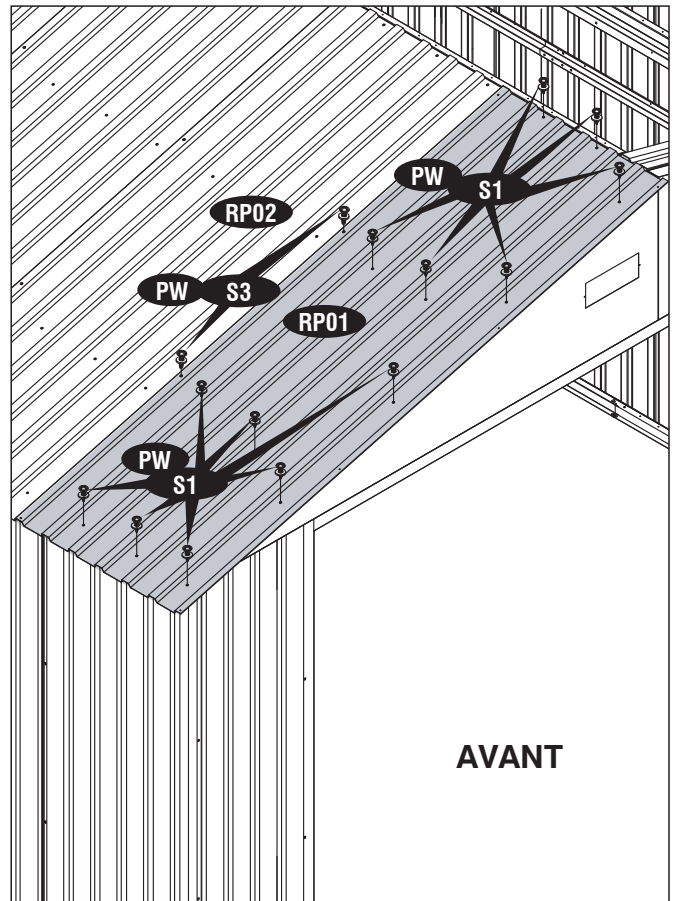
Étape - 6



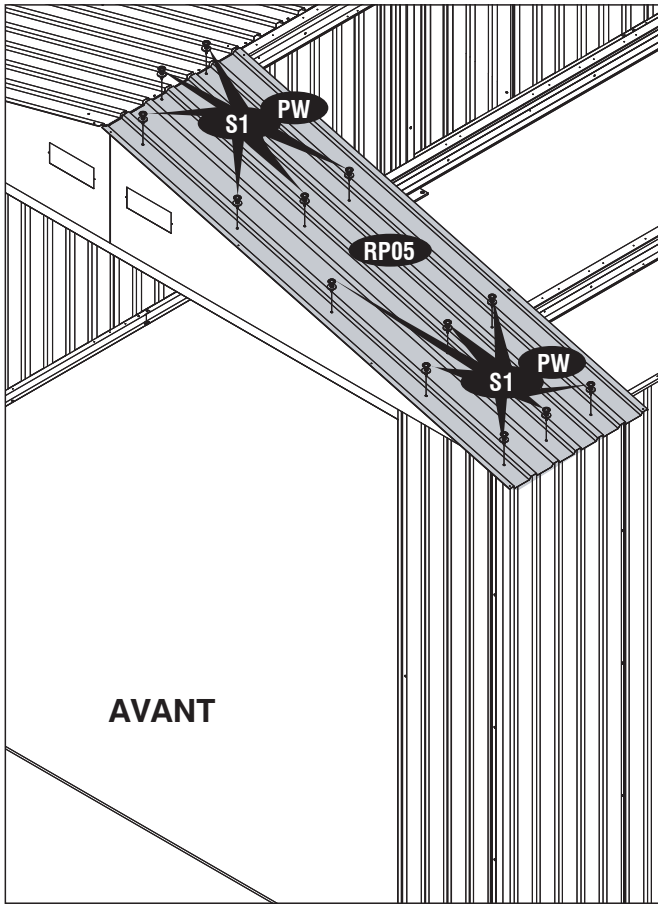
Étape - 7



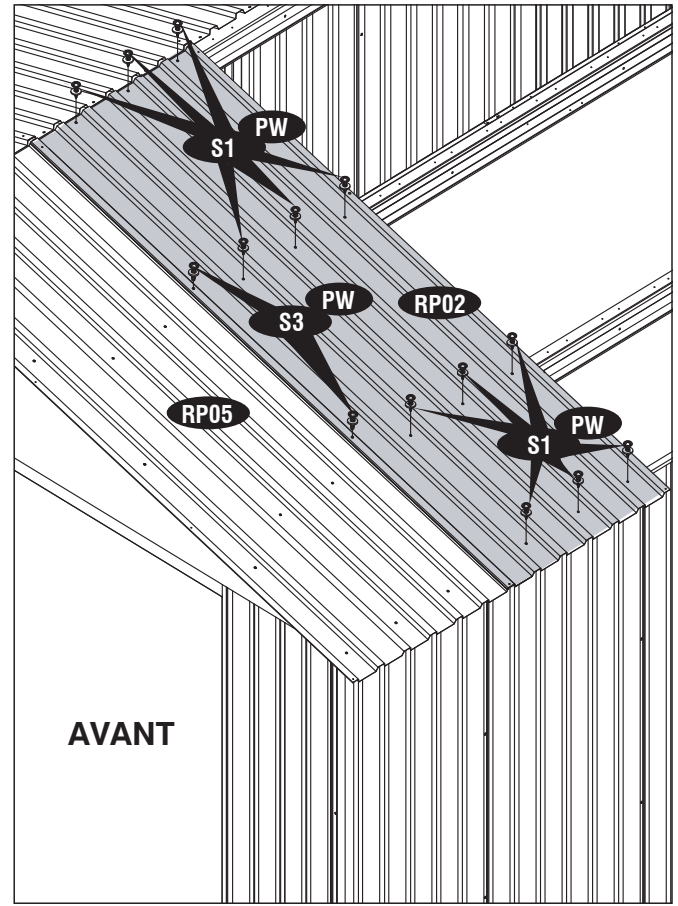
Étape - 8



Étape - 9

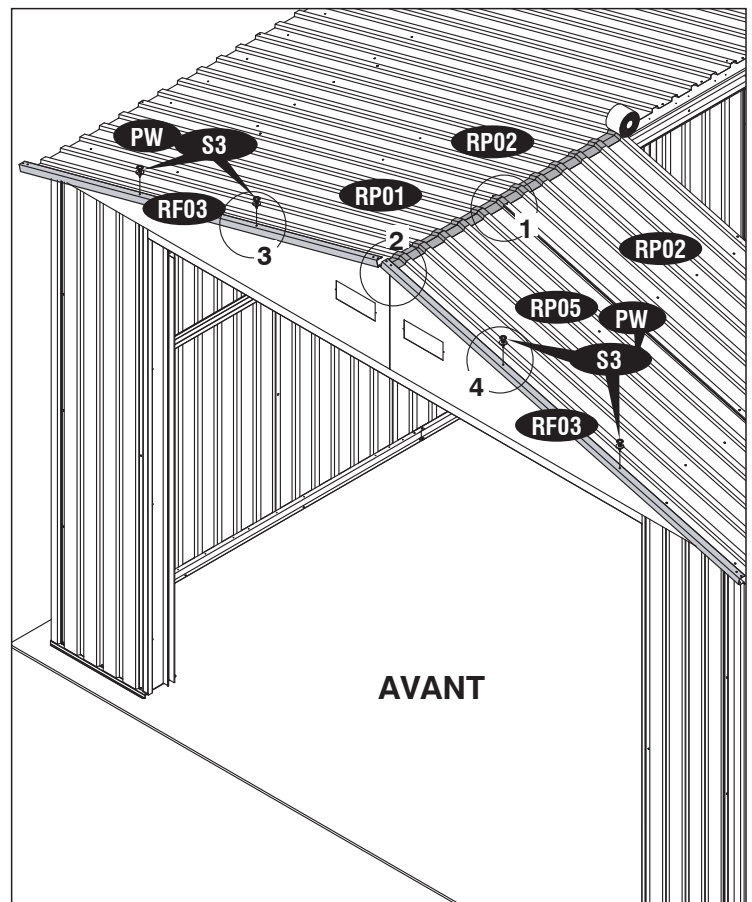
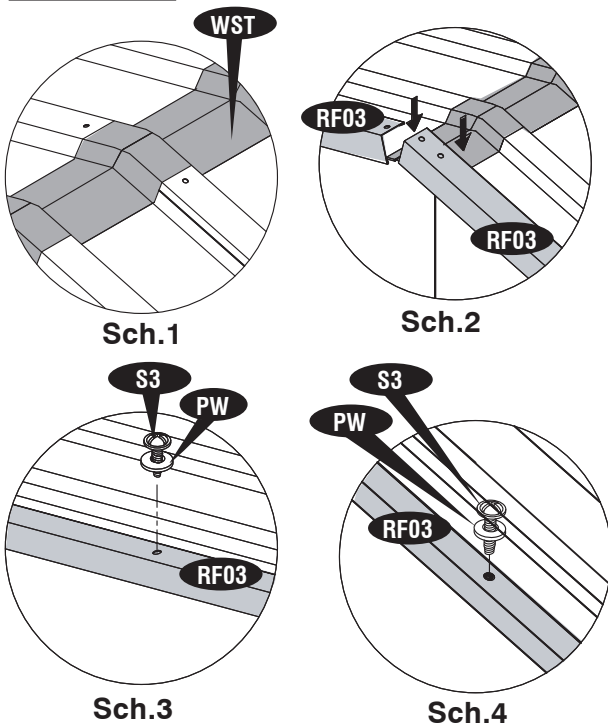


Étape - 10

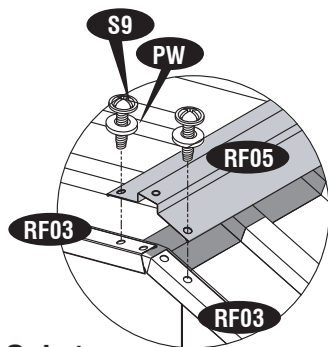


Note L'installation de panneau de toit en employant une échelle de l'intérieur aux panneaux manquants.

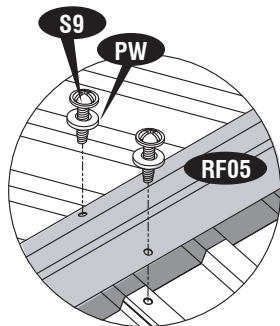
Étape - 11



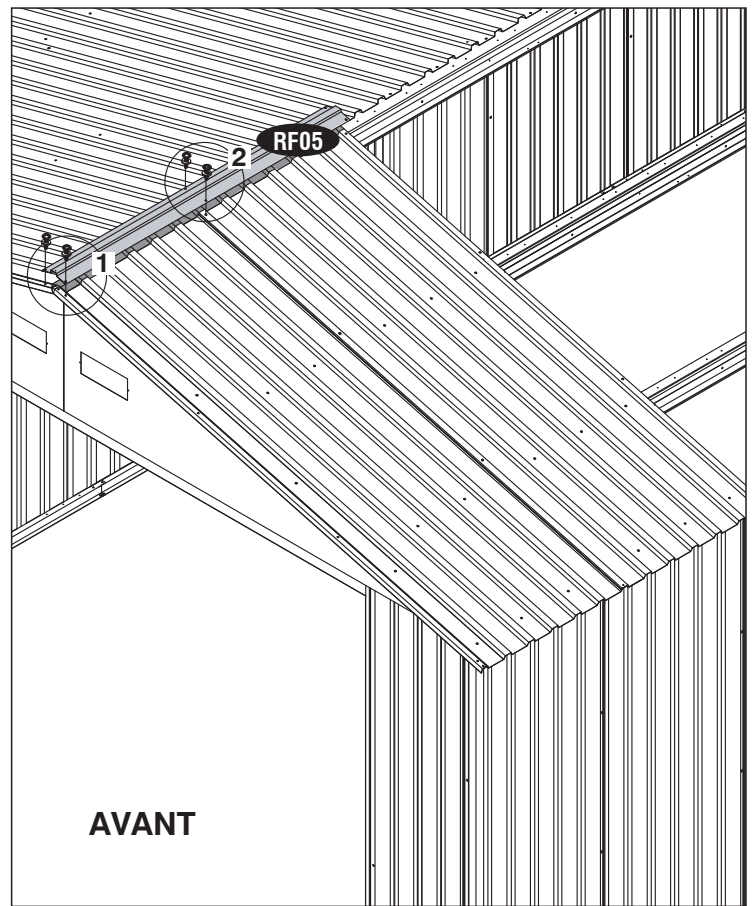
Étape - 12



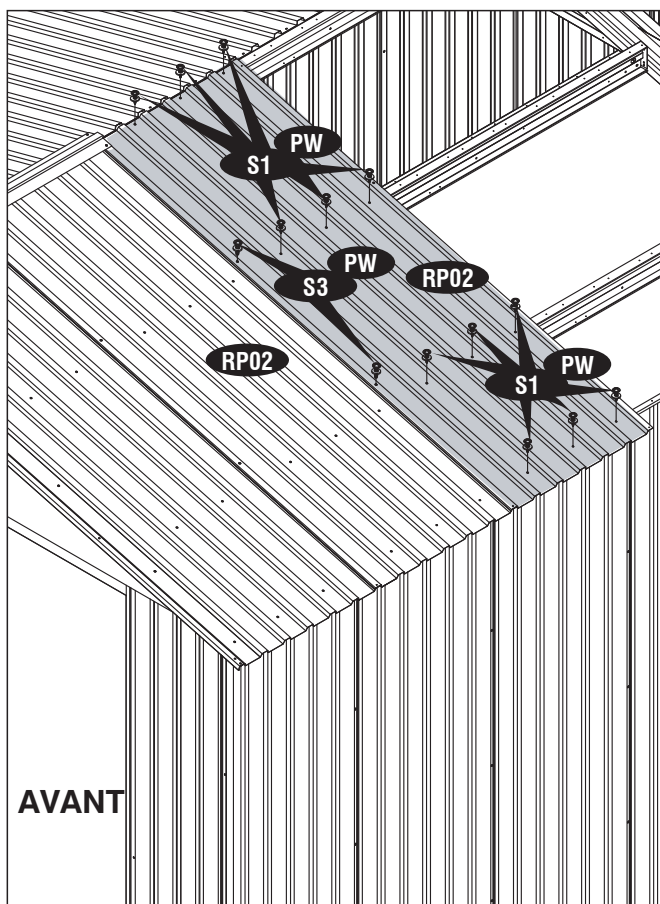
Sch.1



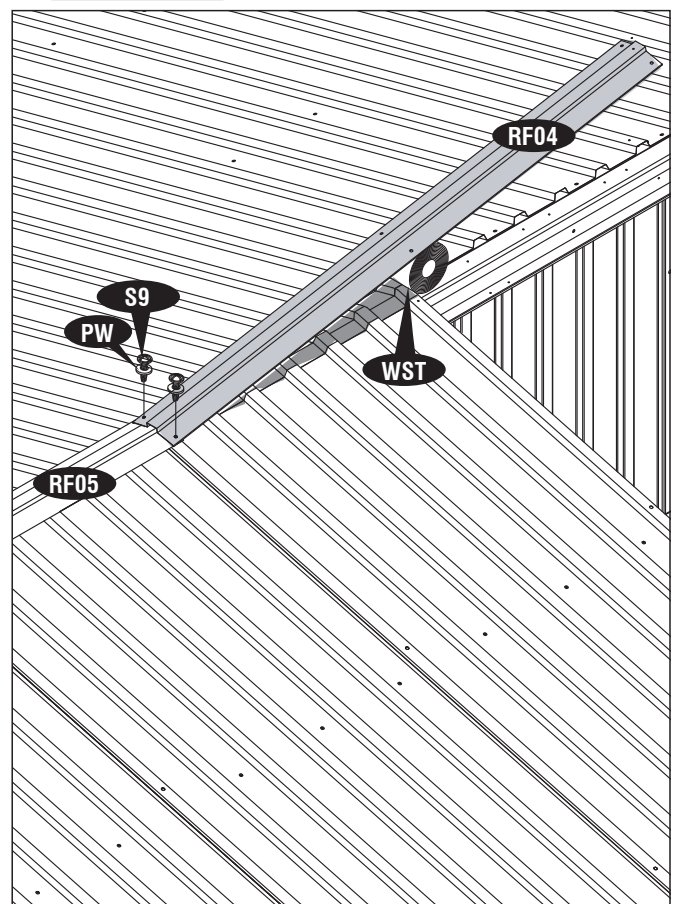
Sch.2



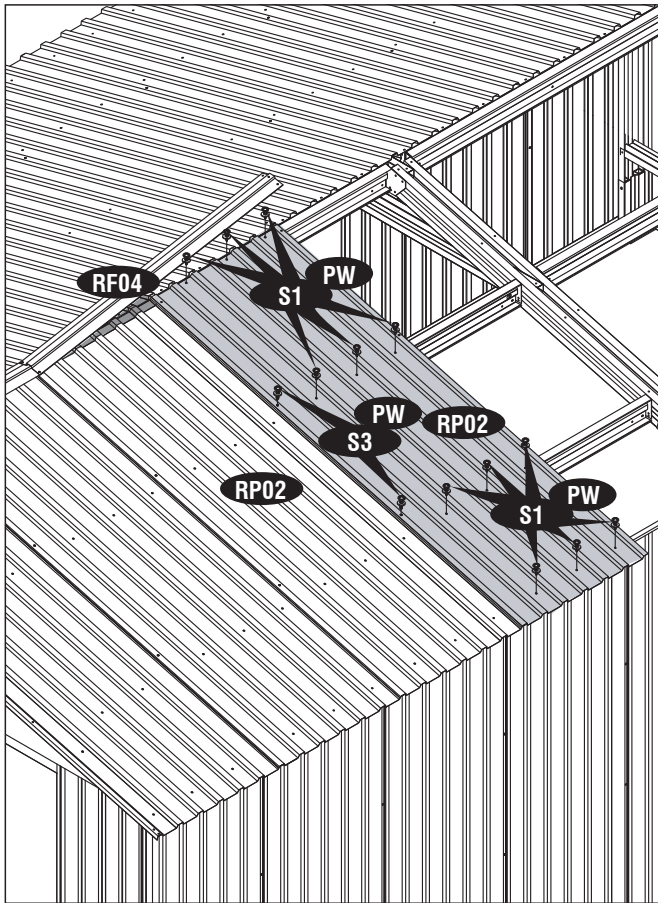
Étape - 13



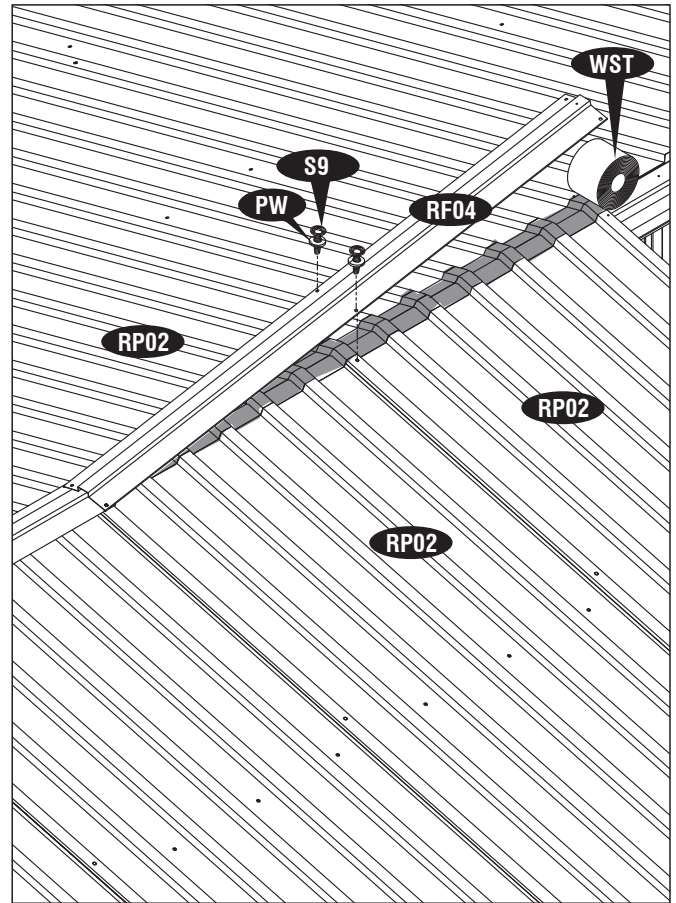
Étape - 14



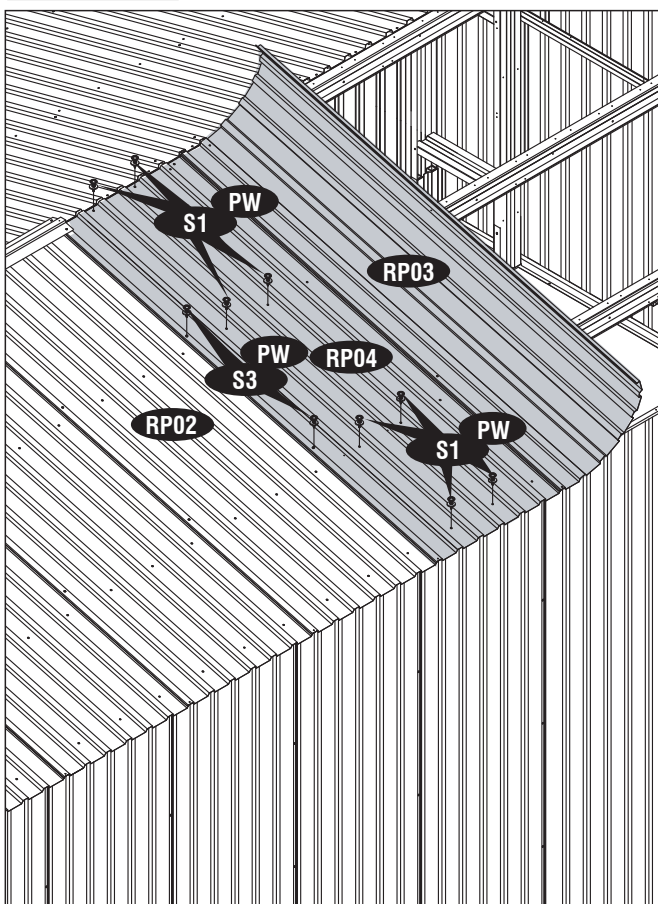
Étape - 15



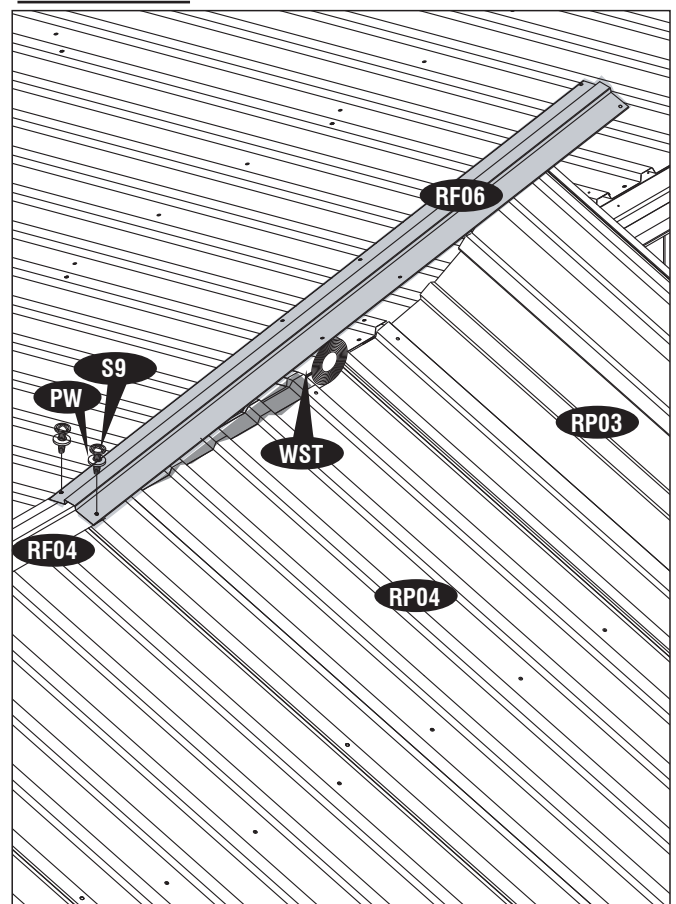
Étape - 16



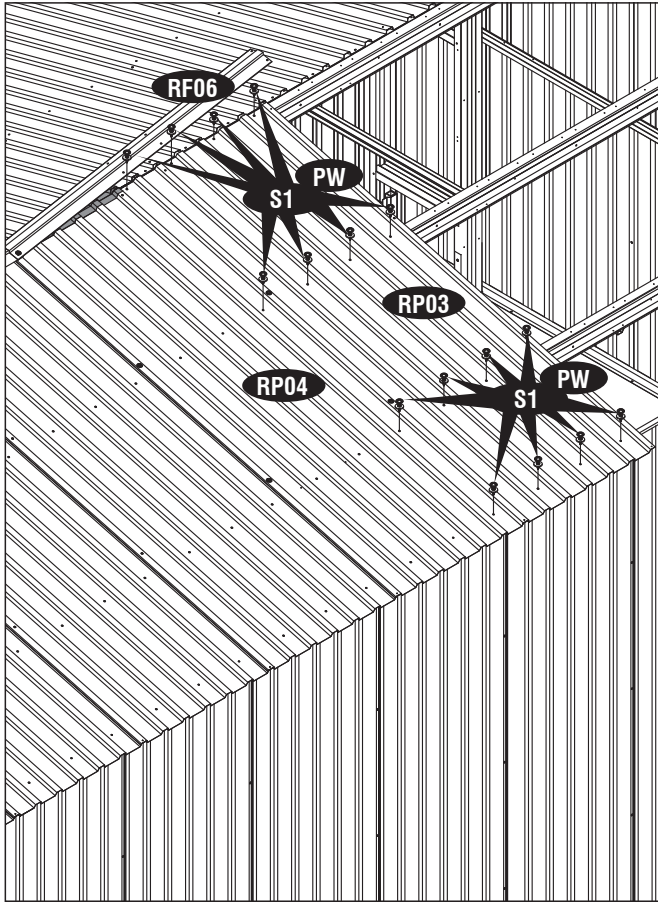
Étape - 17



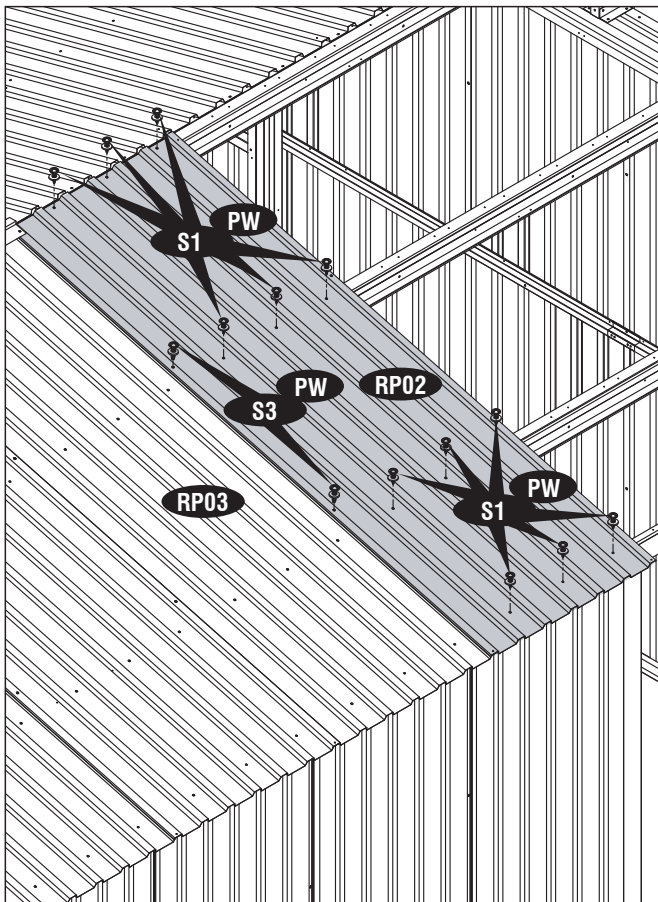
Étape - 18



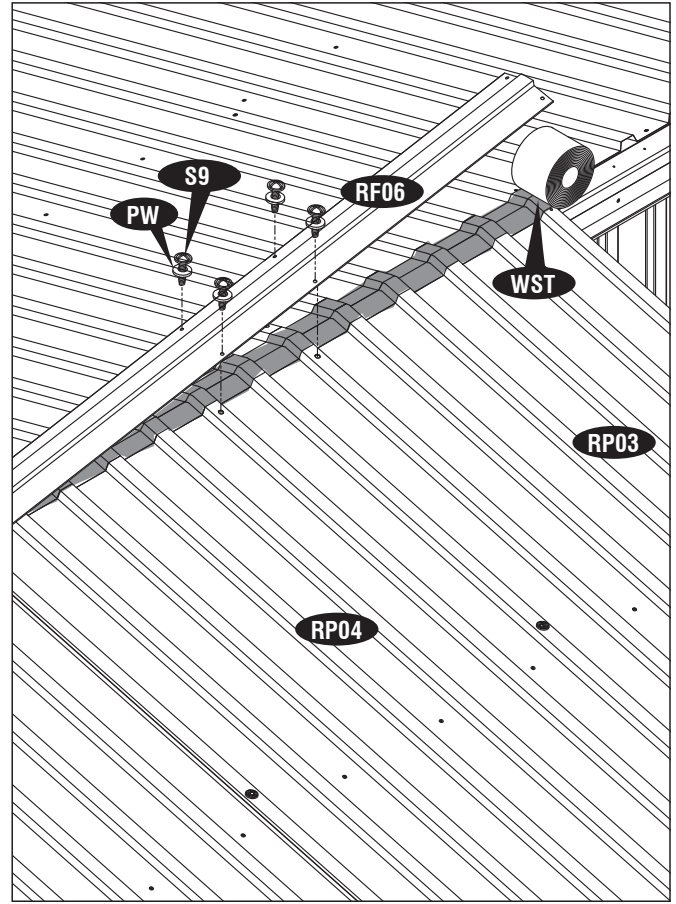
Étape - 19



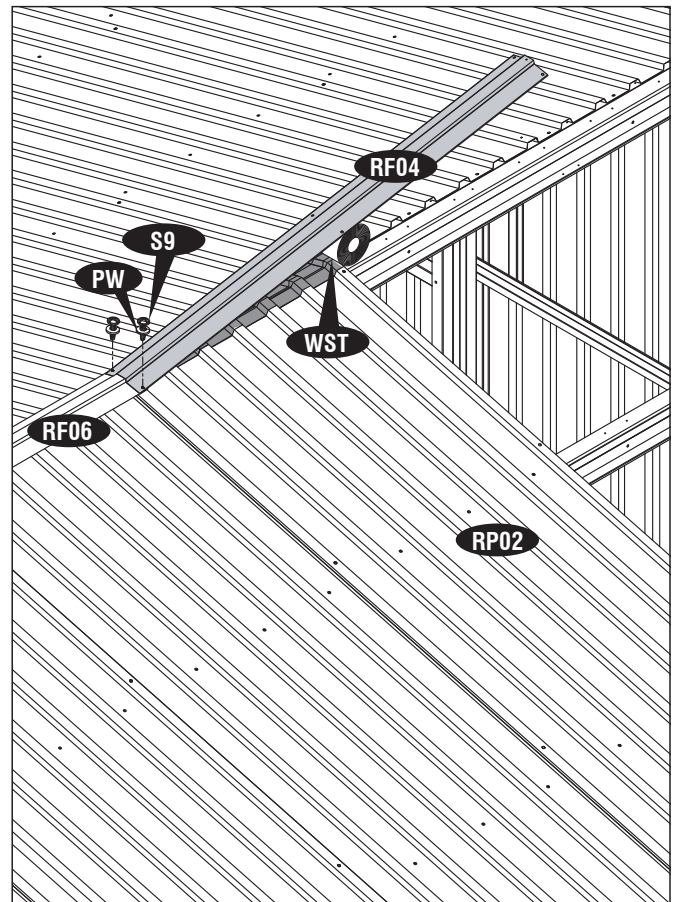
Étape - 21



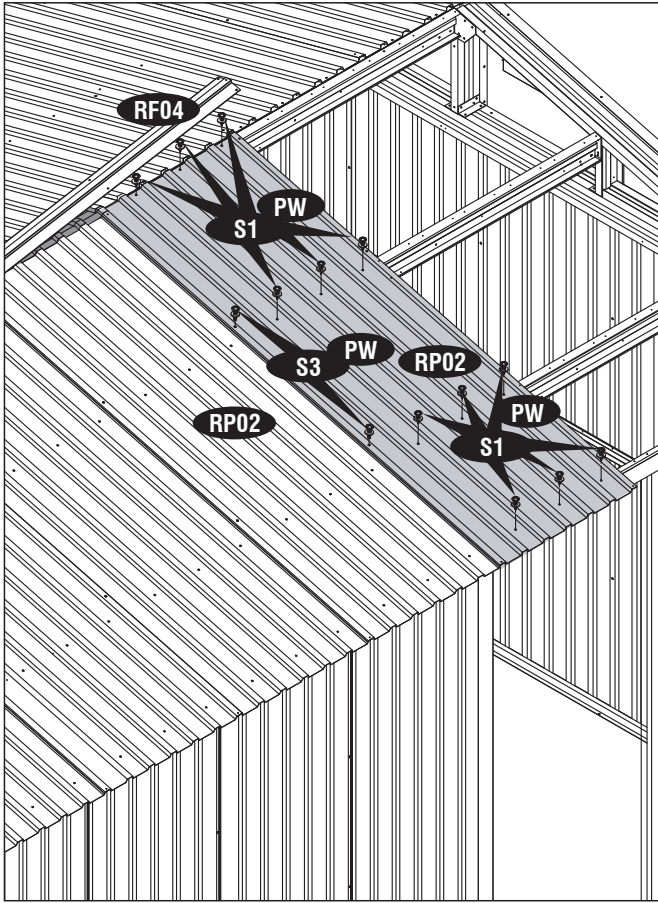
Étape - 20



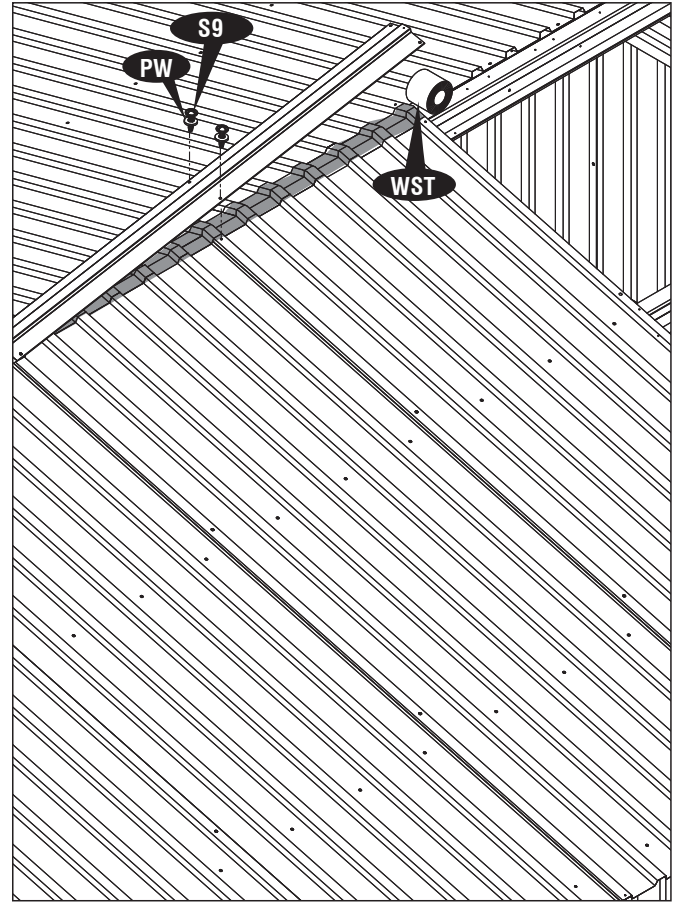
Étape - 22



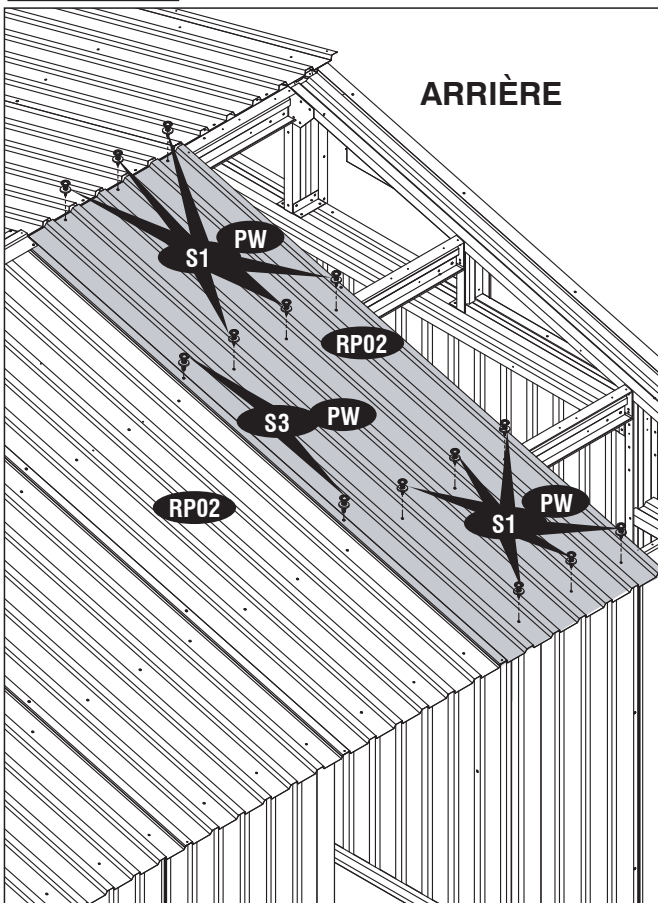
Étape - 23



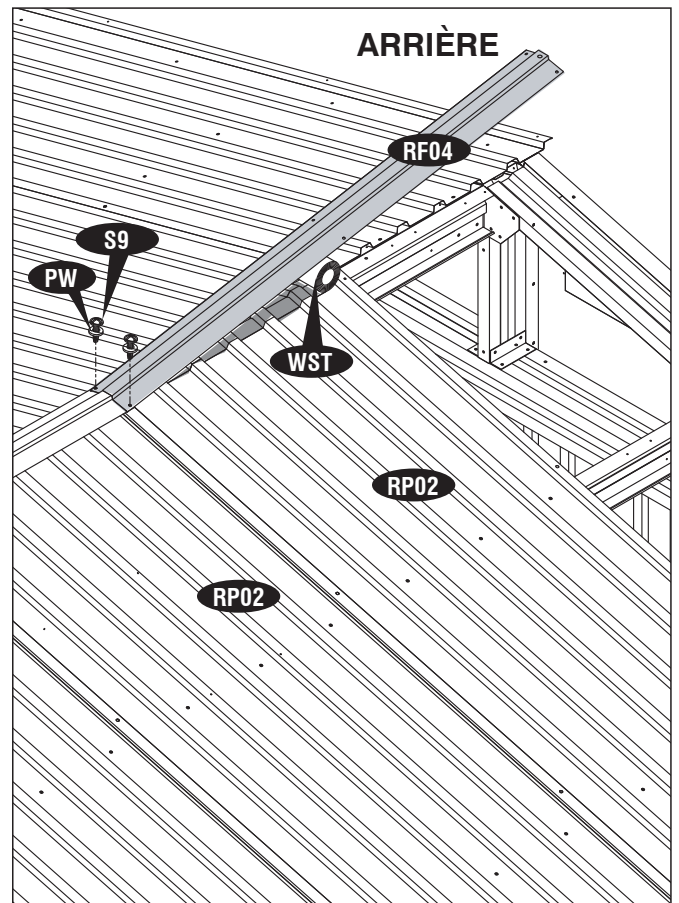
Étape - 24



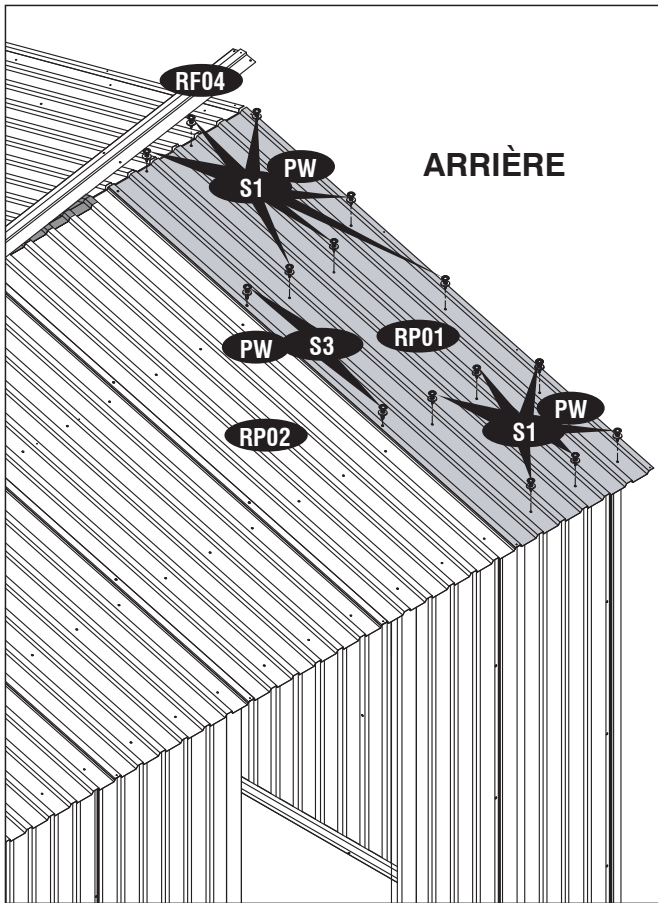
Étape - 25



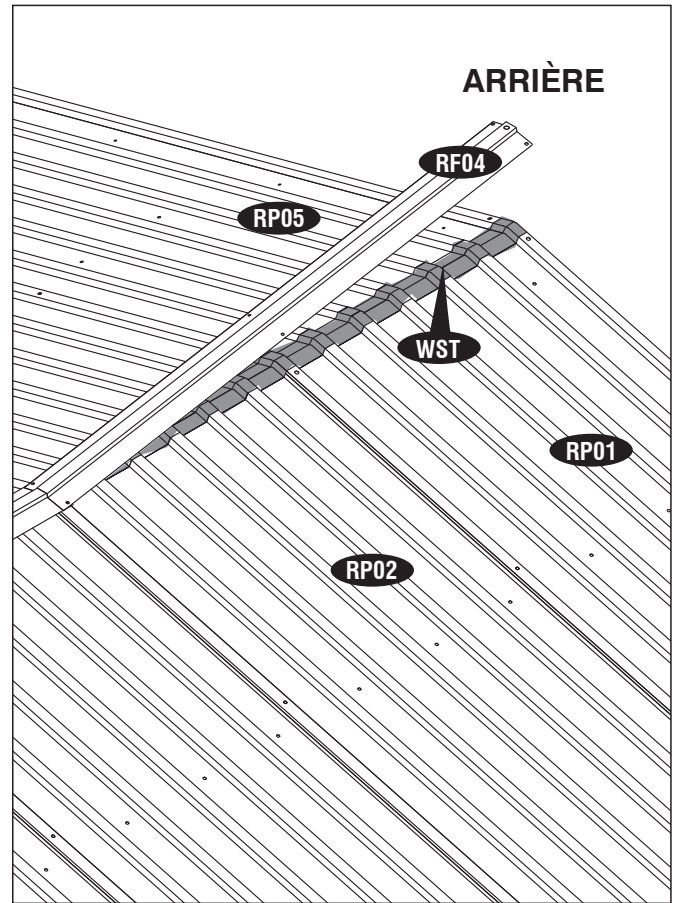
Étape - 26



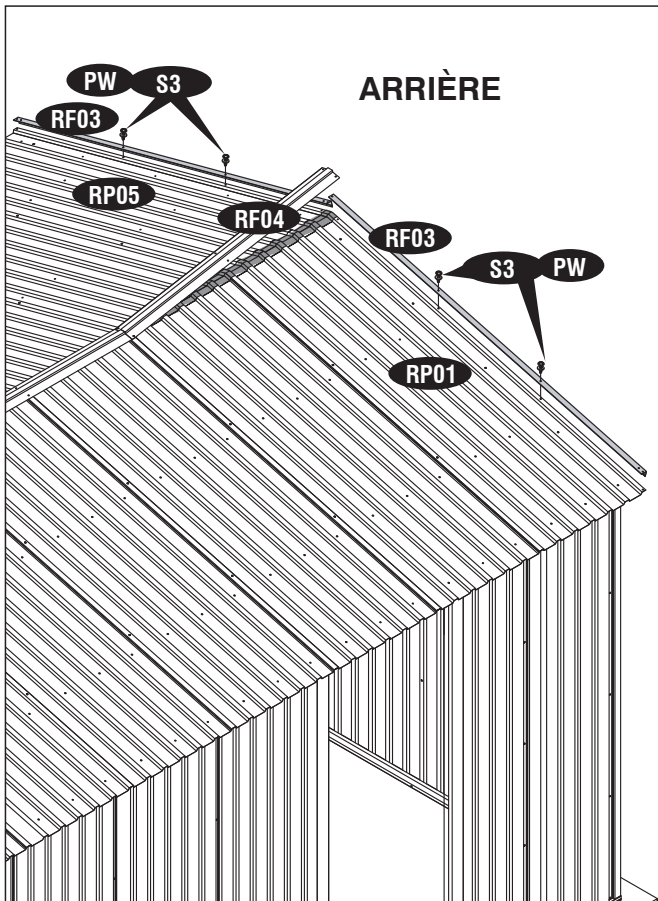
Étape - 27



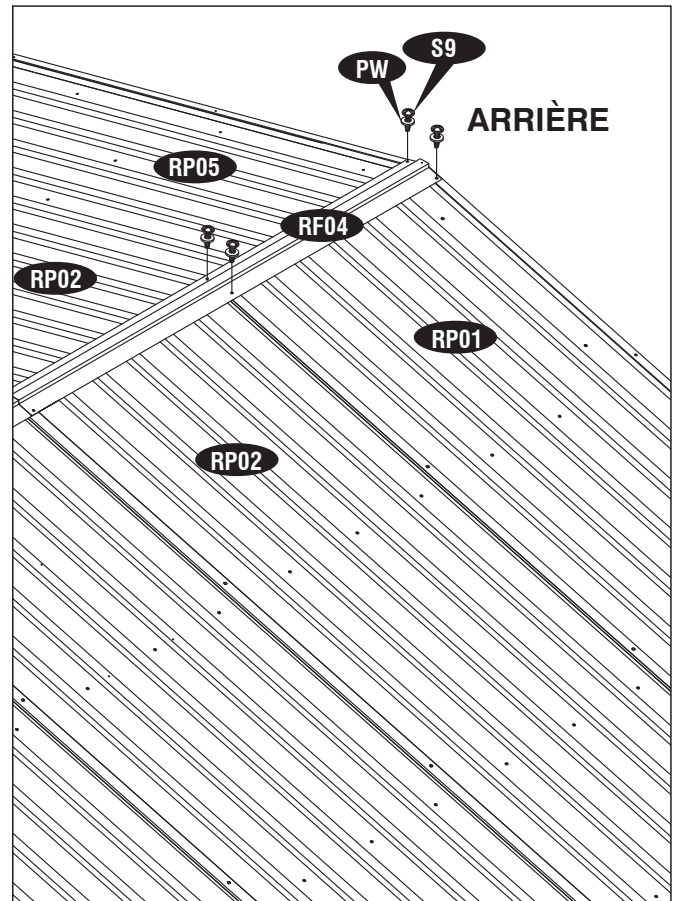
Étape - 28



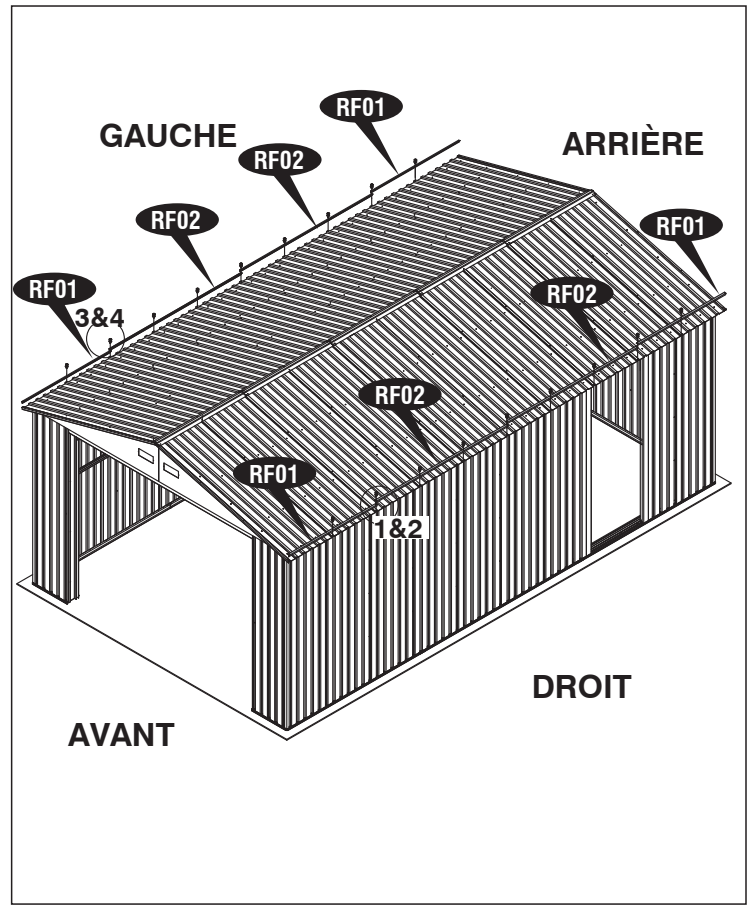
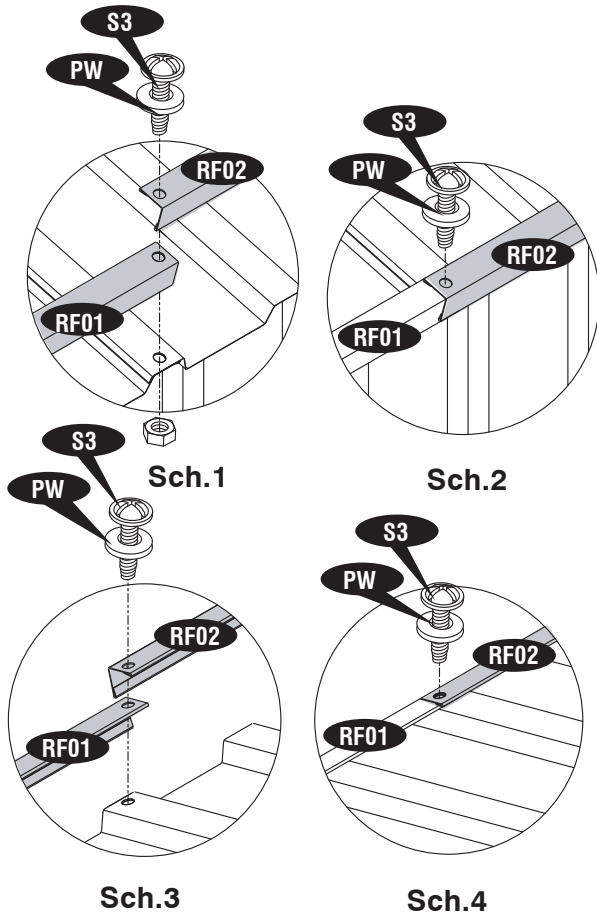
Étape - 29



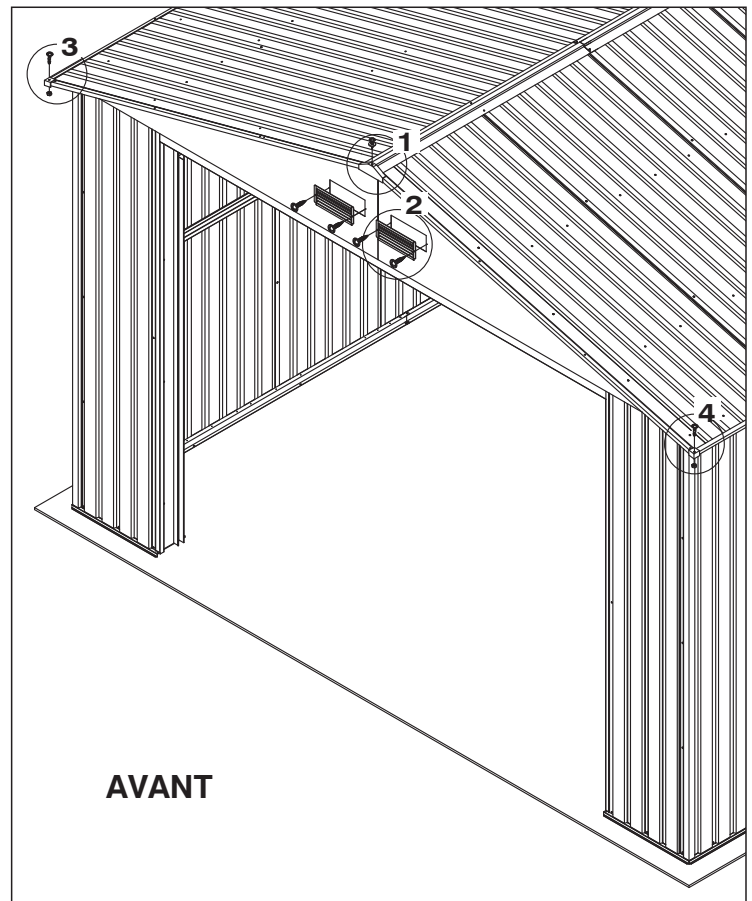
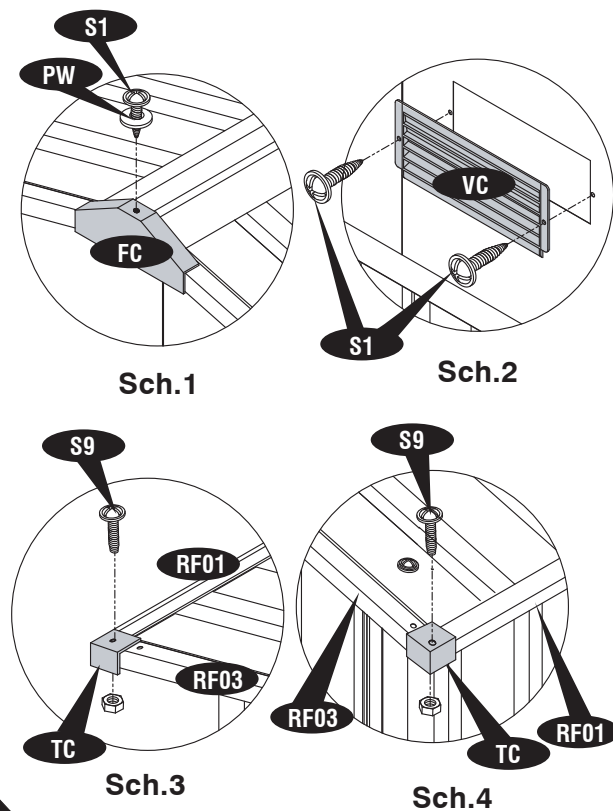
Étape - 30



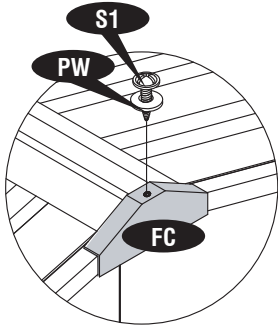
Étape - 31



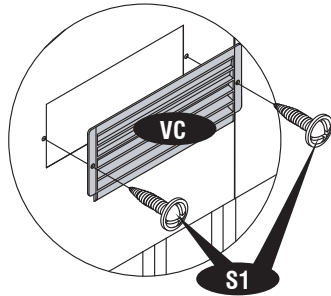
Étape - 32



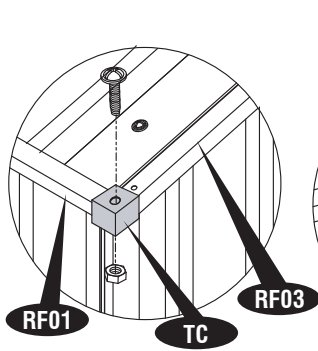
Étape - 33



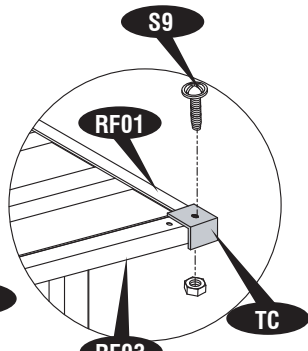
Sch.1



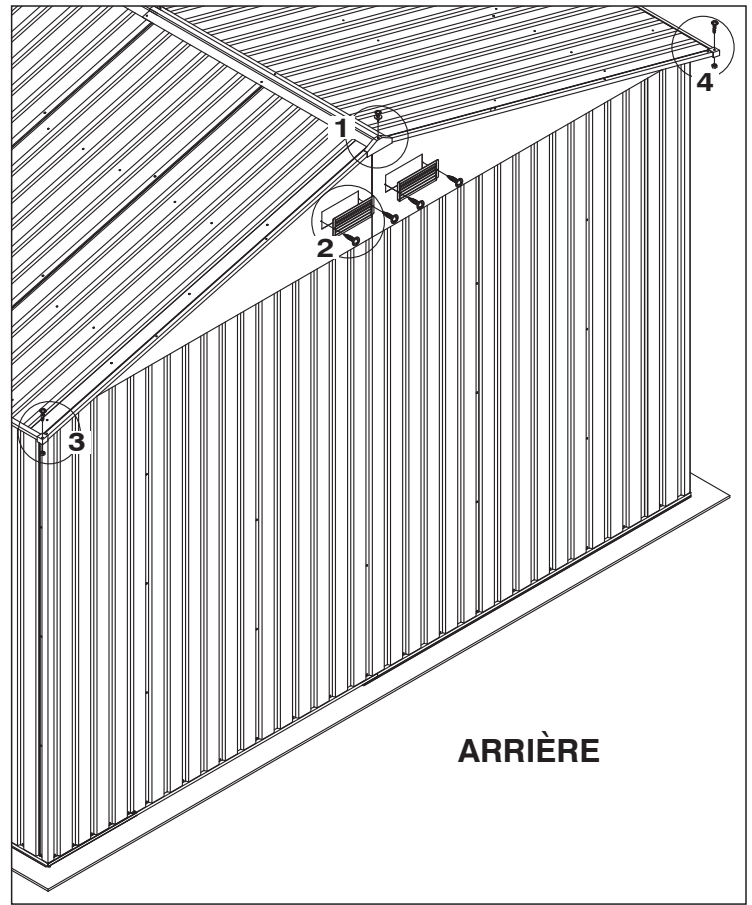
Sch.2



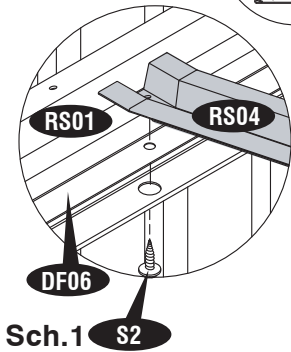
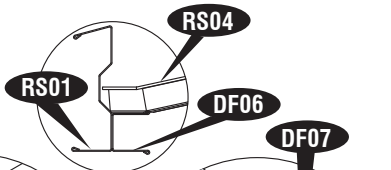
Sch.3



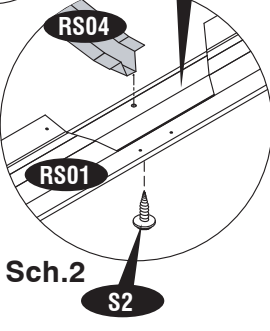
Sch.4



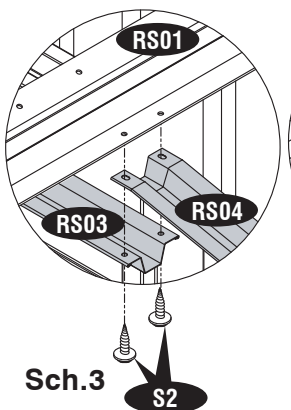
Étape - 34



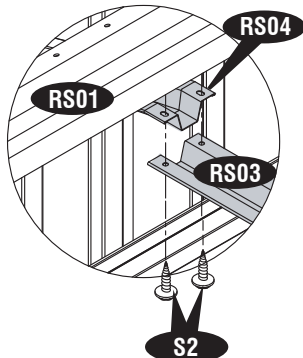
Sch.1



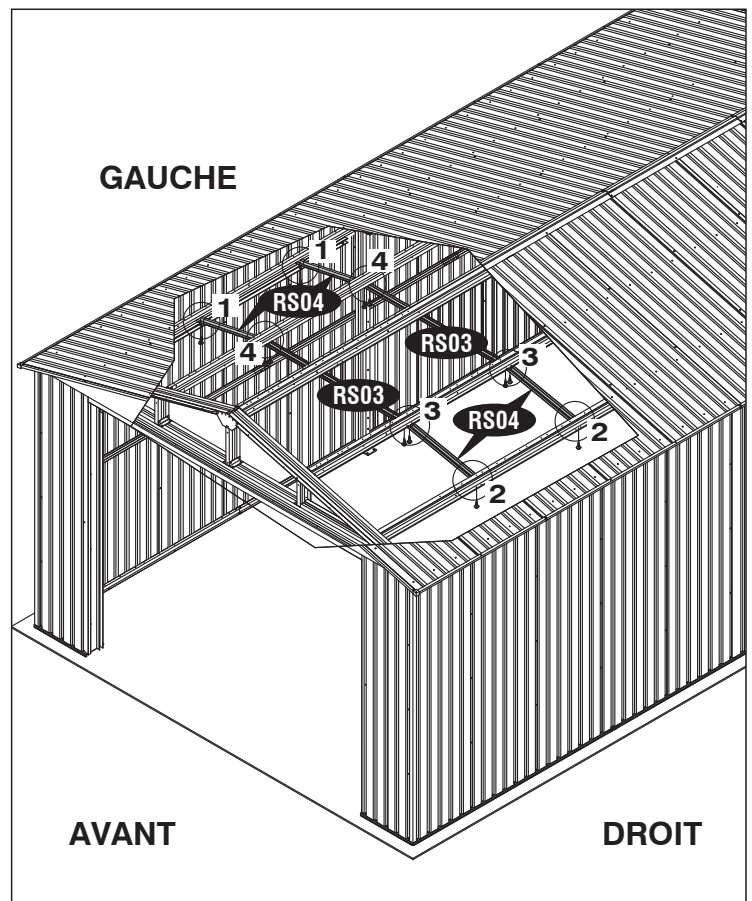
Sch.2



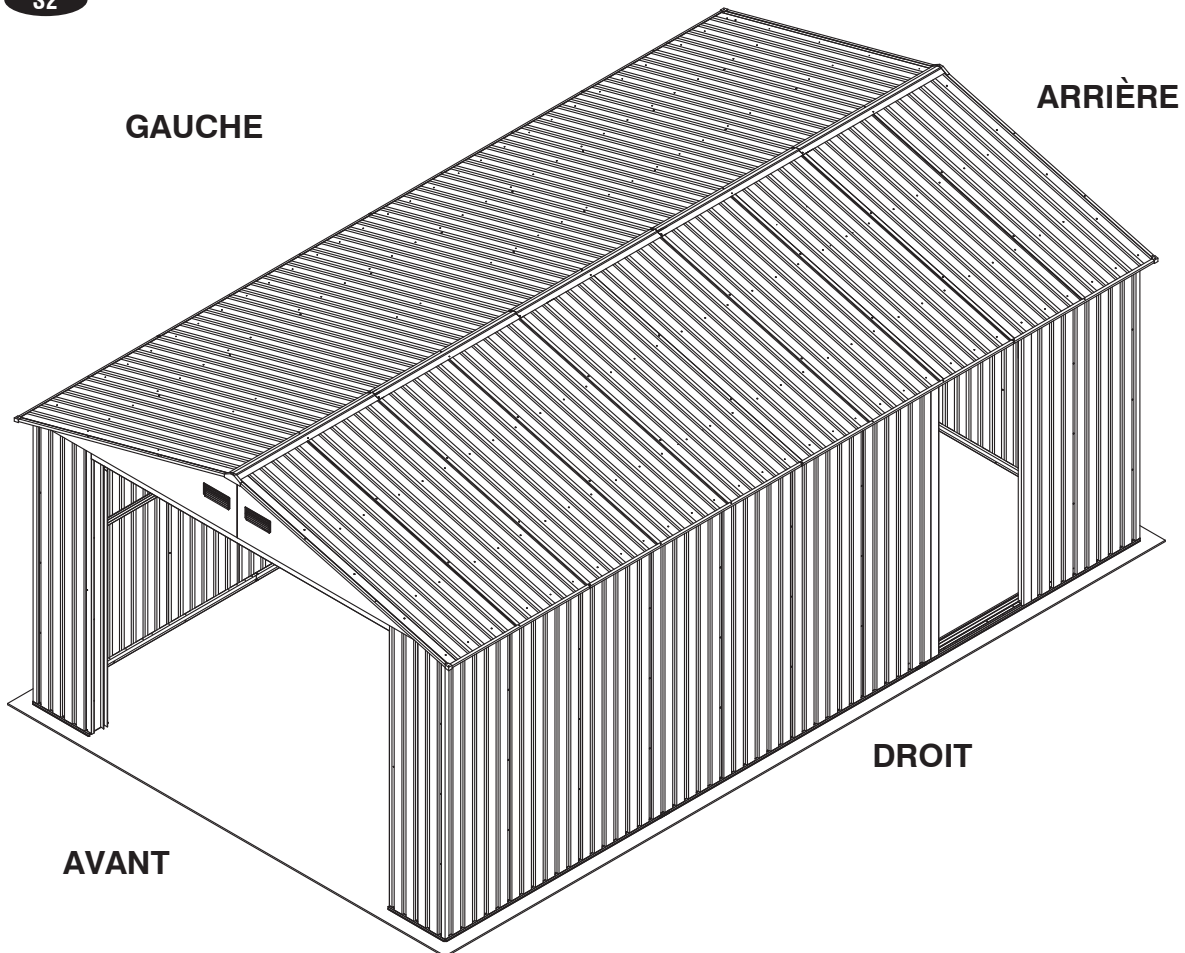
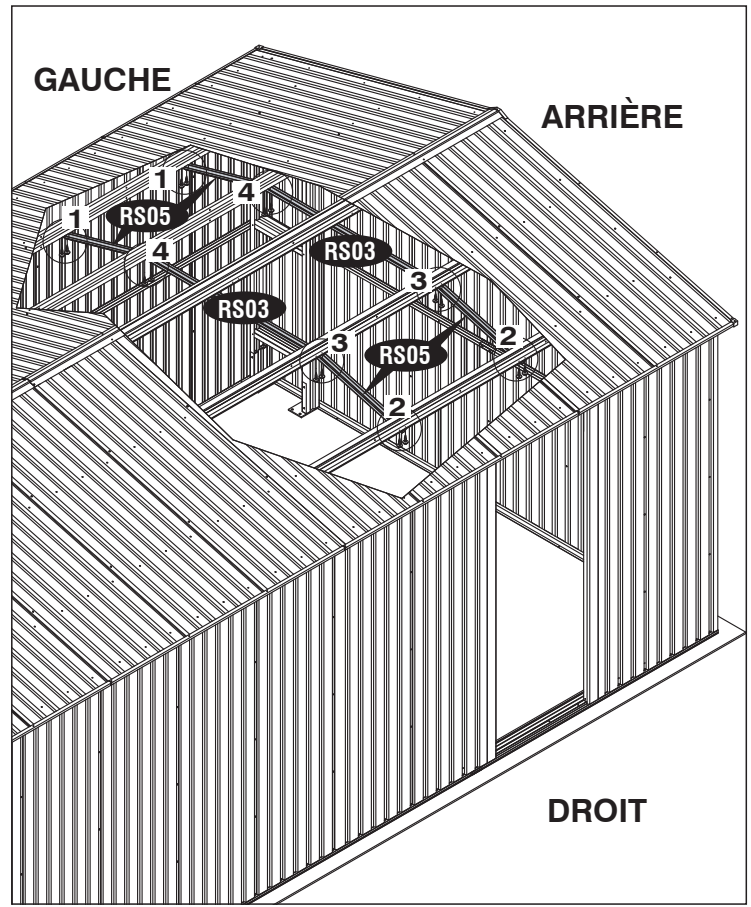
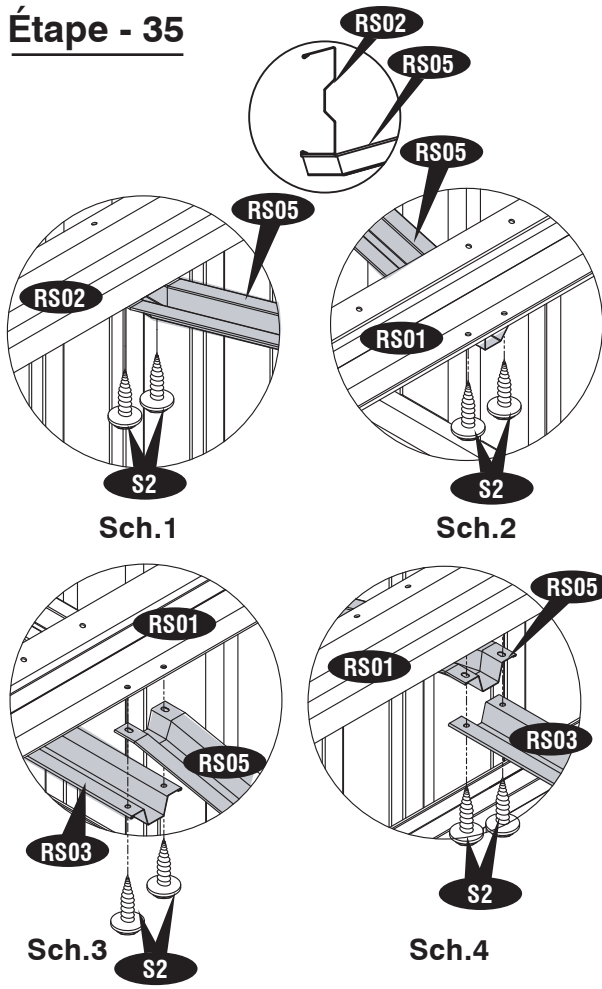
Sch.3



Sch.4



Étape - 35

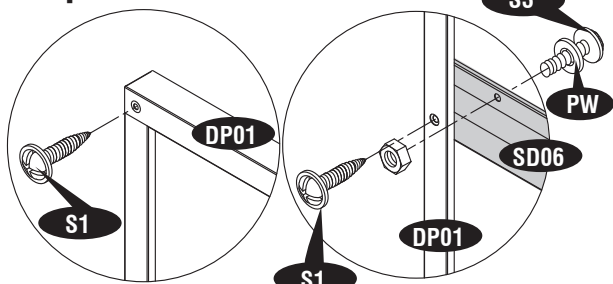


G. Assemblage et installation de la porte avant et latérale

Pièces Nécessaires:

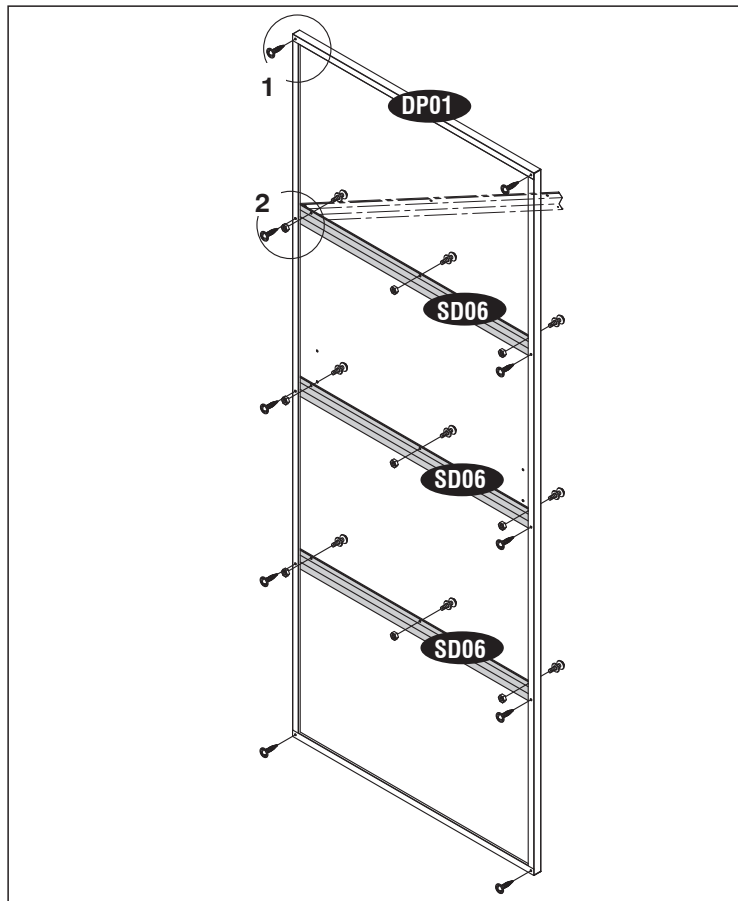
Code	QTÉ	Code	QTÉ
SP01	2	BS	3
SP02	1	TS	2
SP03	1	DH	3
DS01	1	FDH	2
DS02	1	CW	1
DS03	4	CU	2
DP01	1	STC	5.1Mètre
SD06	3	S1	18
BS15	2	S2	4
BS16	2	S3	66
BS17	1	S9	6
WBA	10	PW	63
DF08	1	PC	69
DF09	1	EDP1	(4.28 Mètre) 2
DF10	1	EDP2	(2.04 Mètre) 2
		EDP3	(2.14 Mètre) 2

Étape - 1



Sch.1

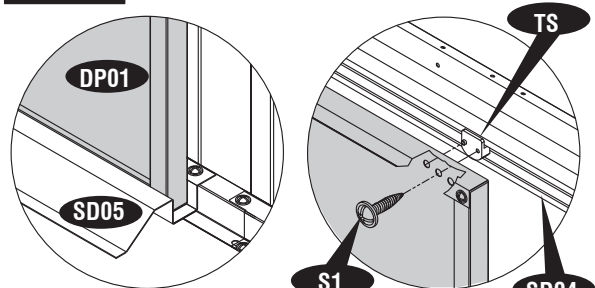
Sch.2



Étape - 2

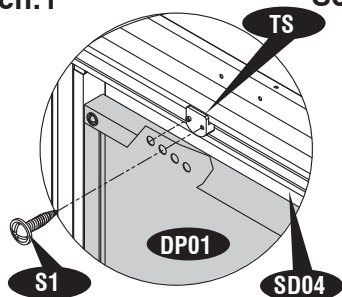


Note Employer les trous appropriés sur la porte pour aligner.

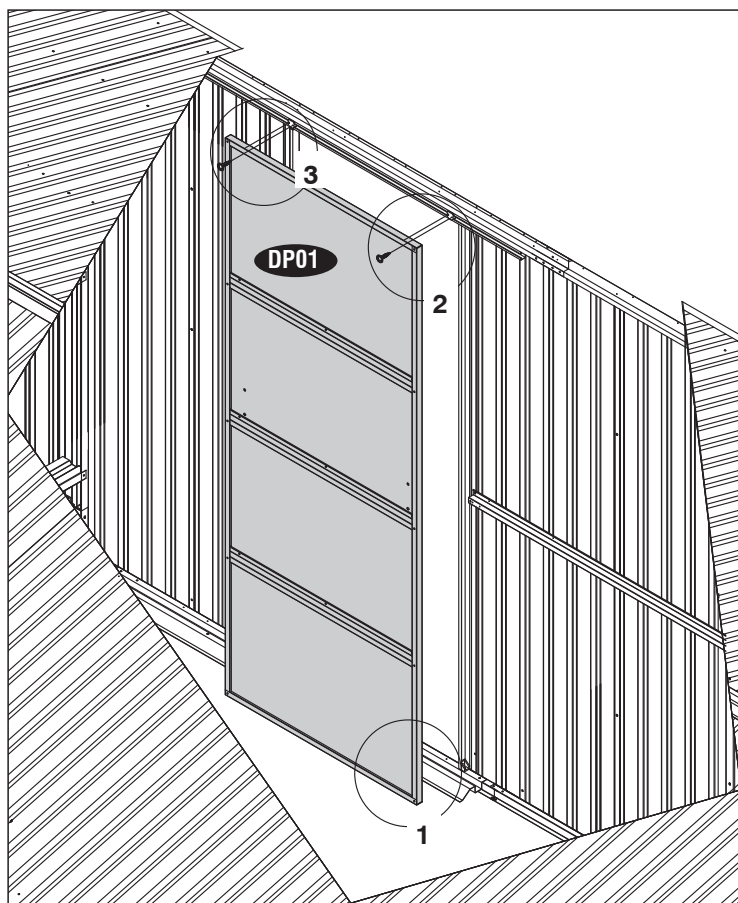


Sch.1

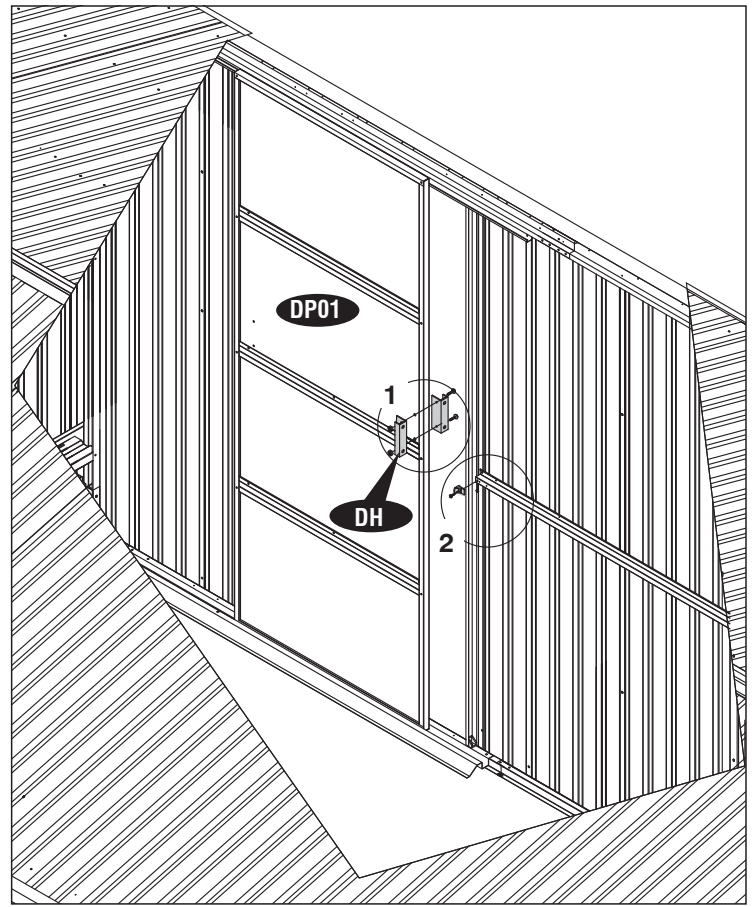
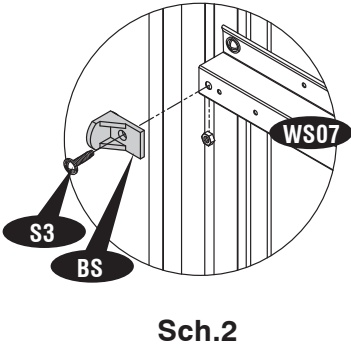
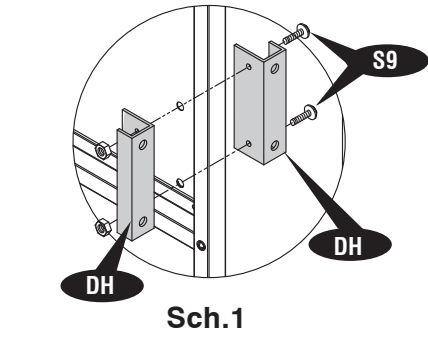
Sch.2



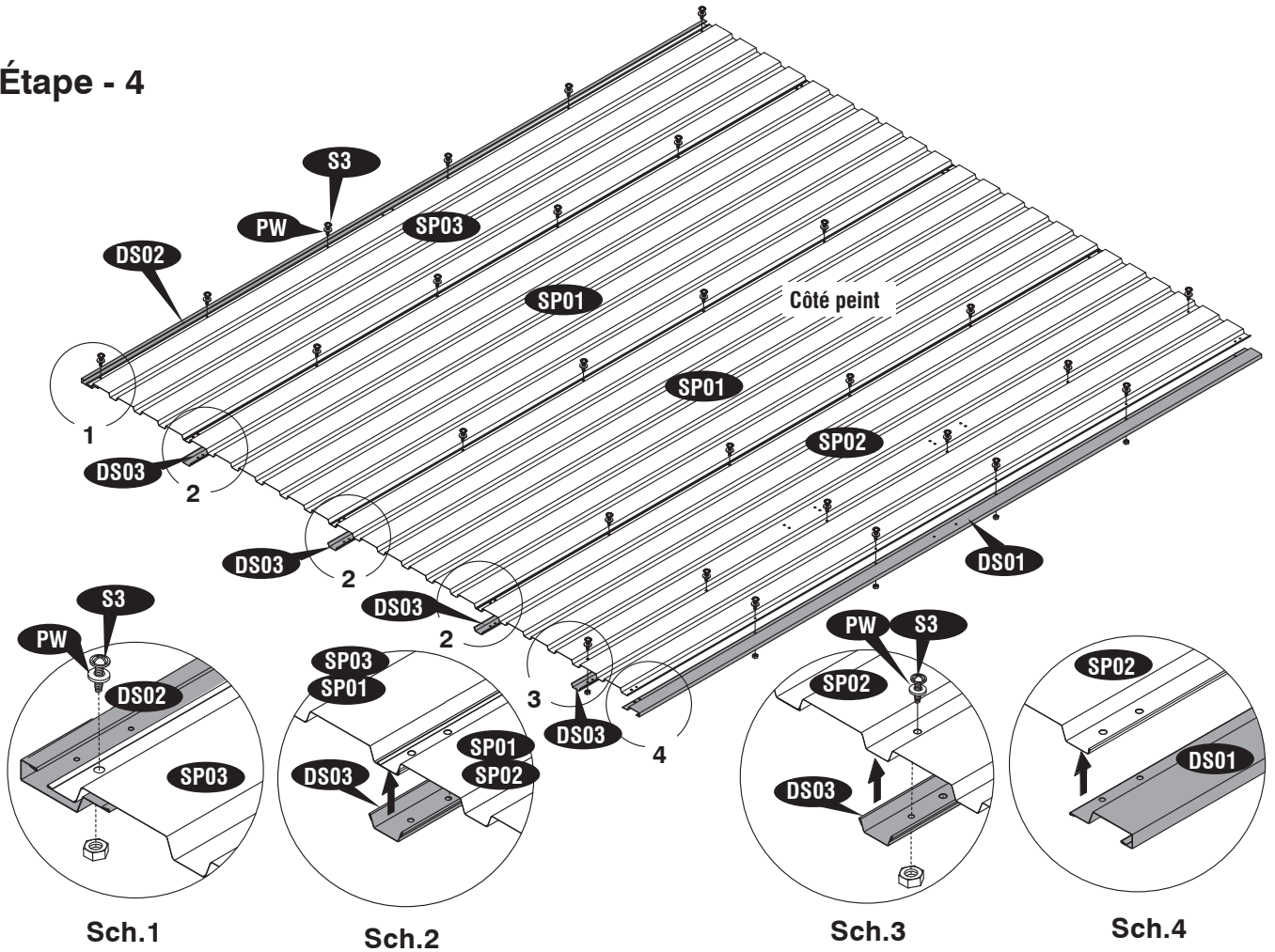
Sch.3



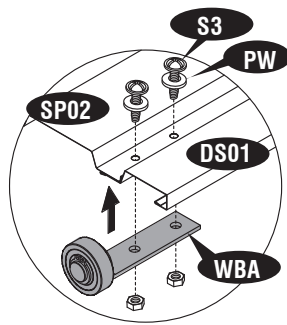
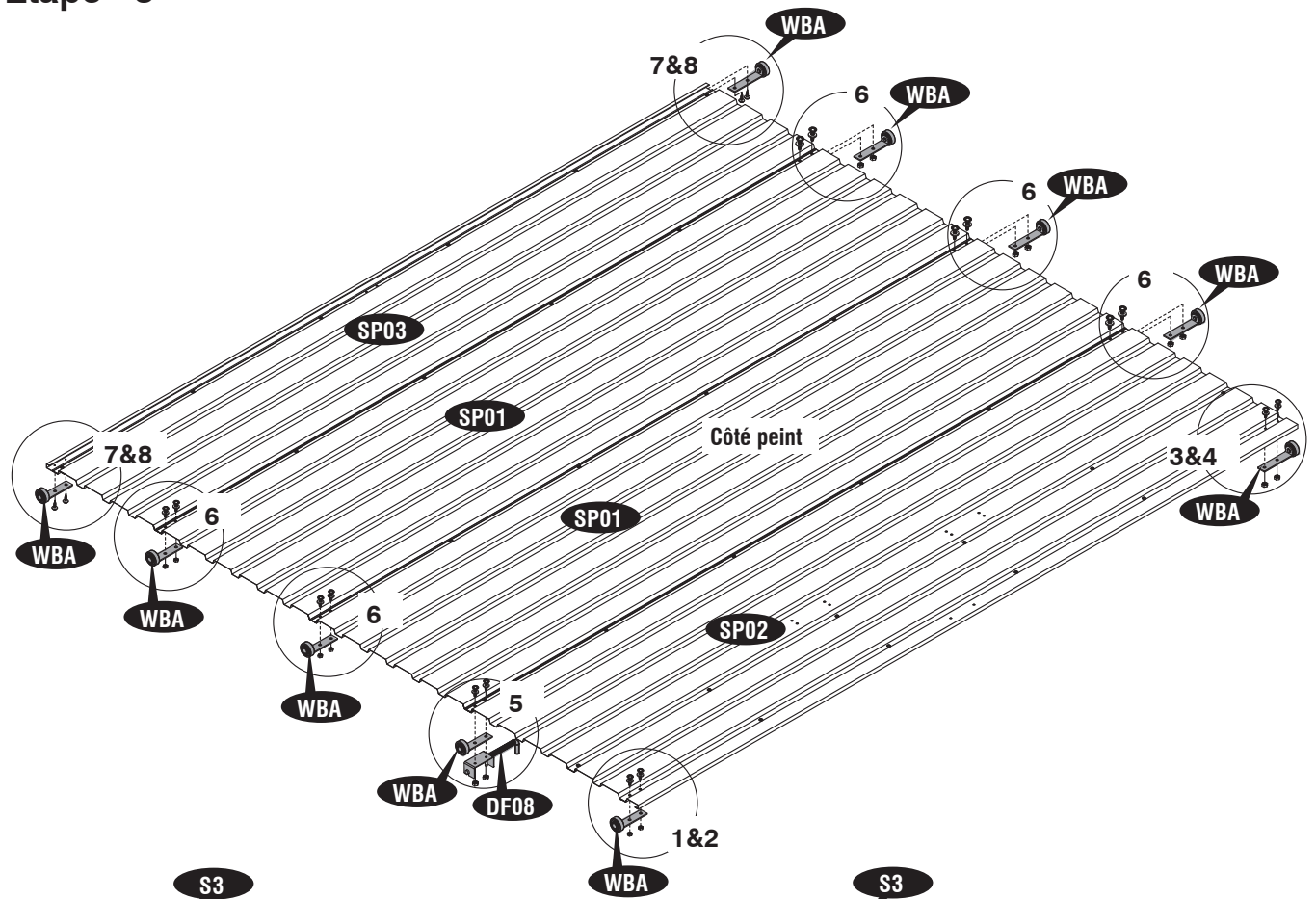
Étape - 3



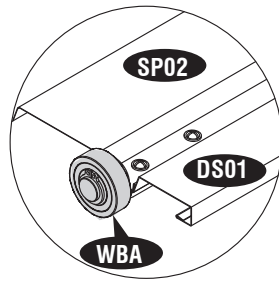
Étape - 4



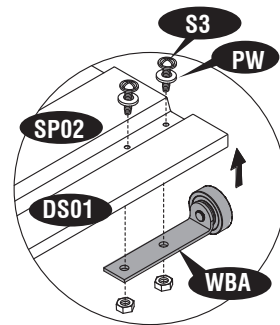
Étape - 5



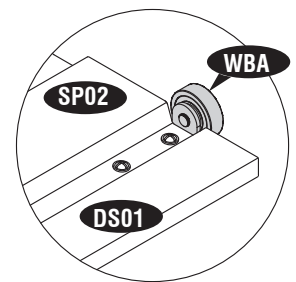
Sch.1



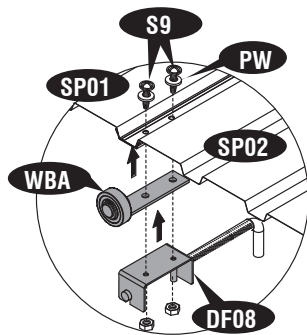
Sch.2



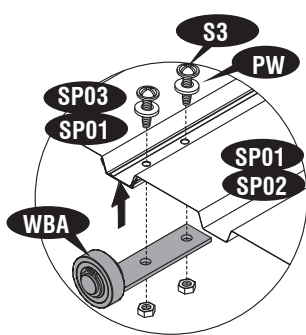
Sch.3



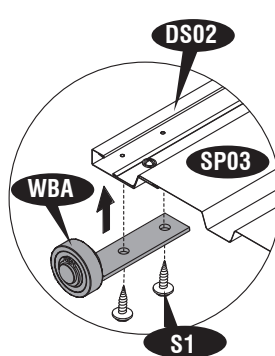
Sch.4



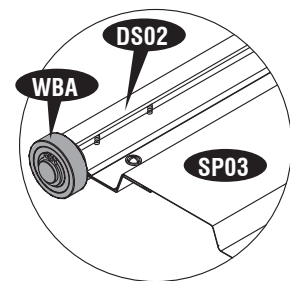
Sch.5



Sch.6

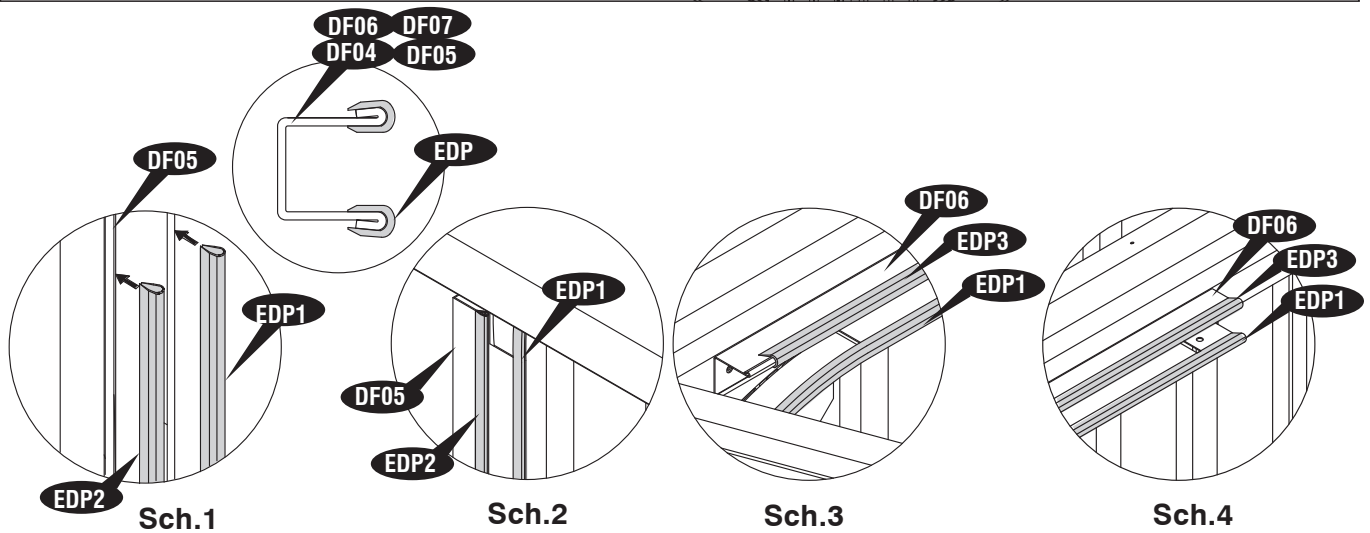
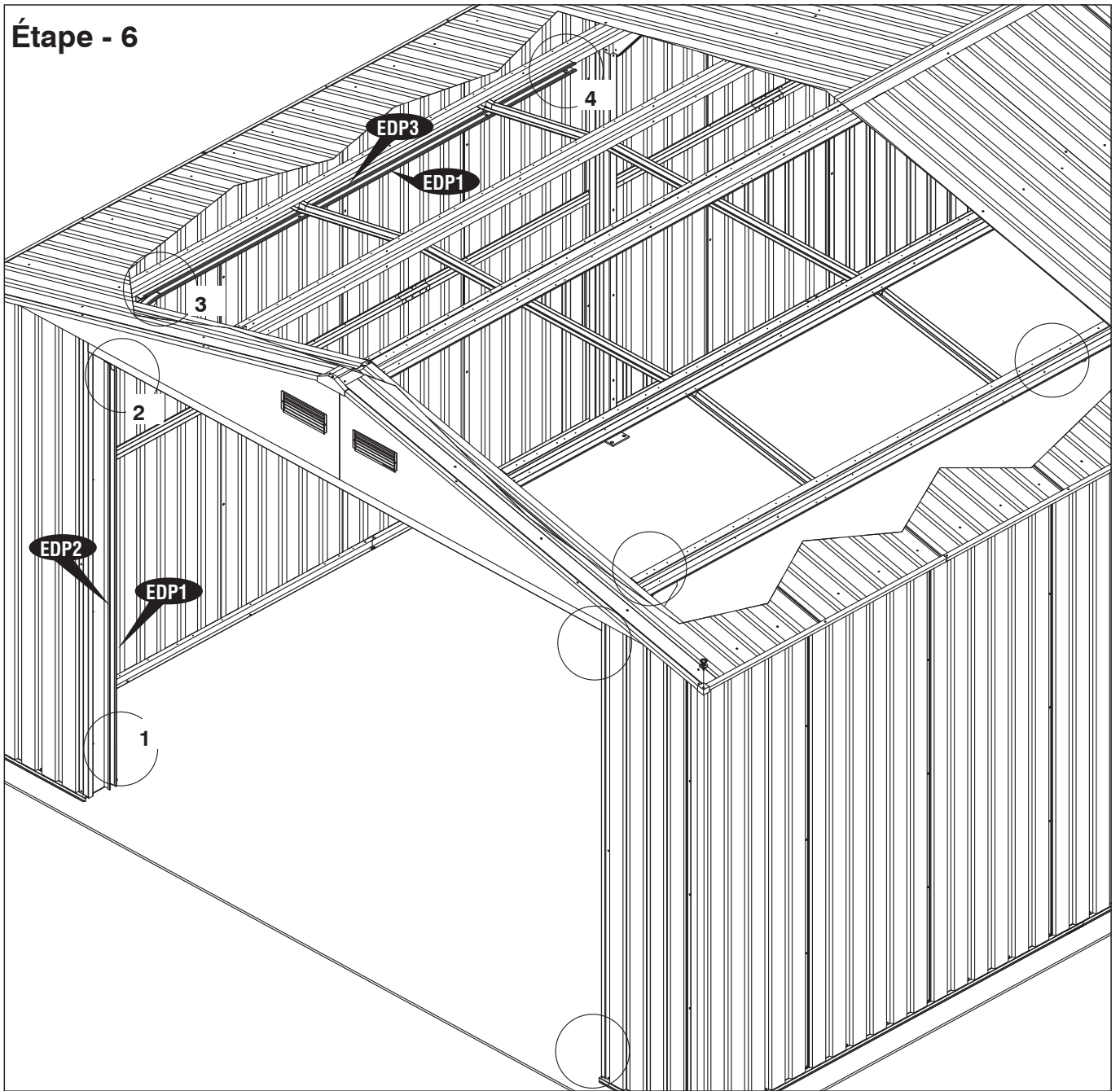


Sch.7

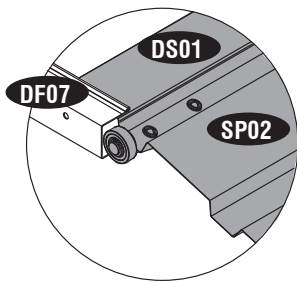


Sch.8

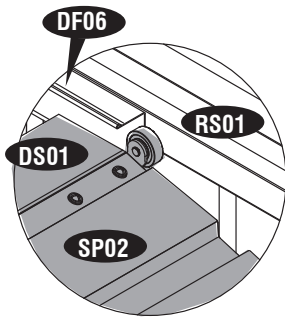
Étape - 6



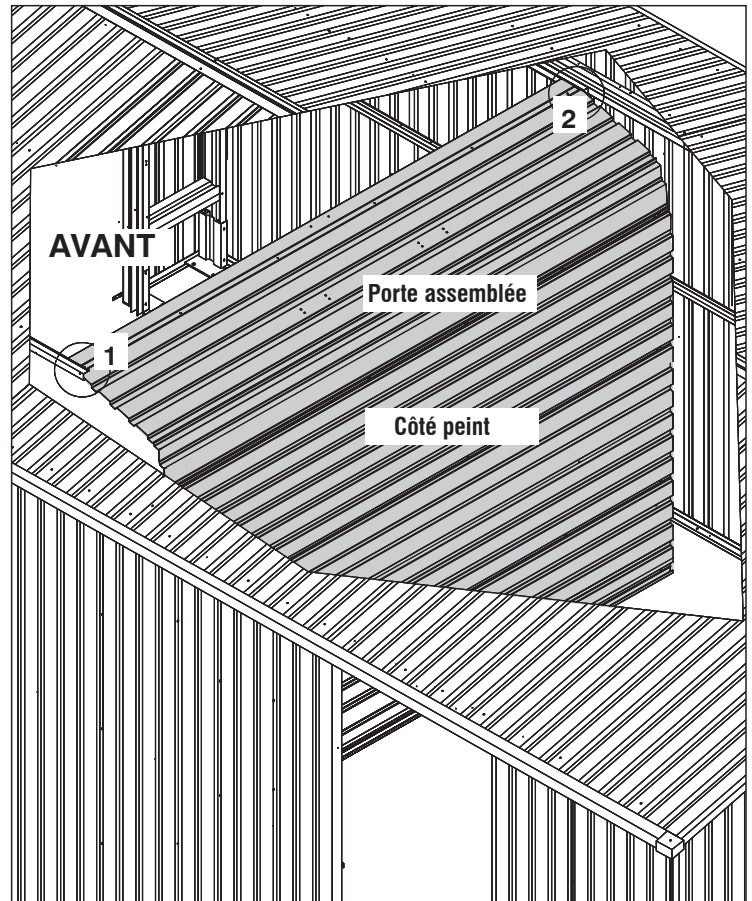
Étape - 7



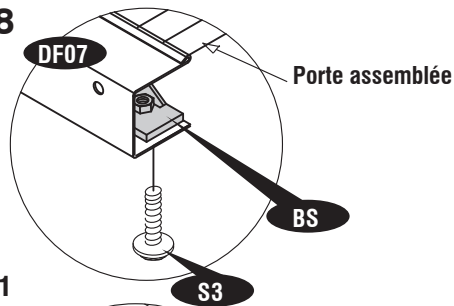
Sch.1



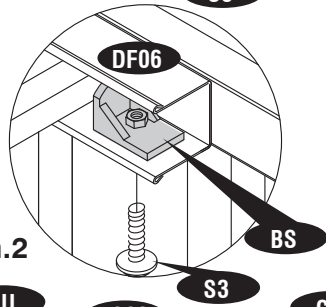
Sch.2



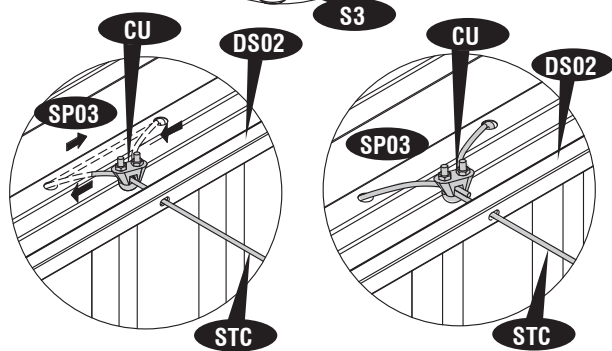
Étape - 8



Sch.1

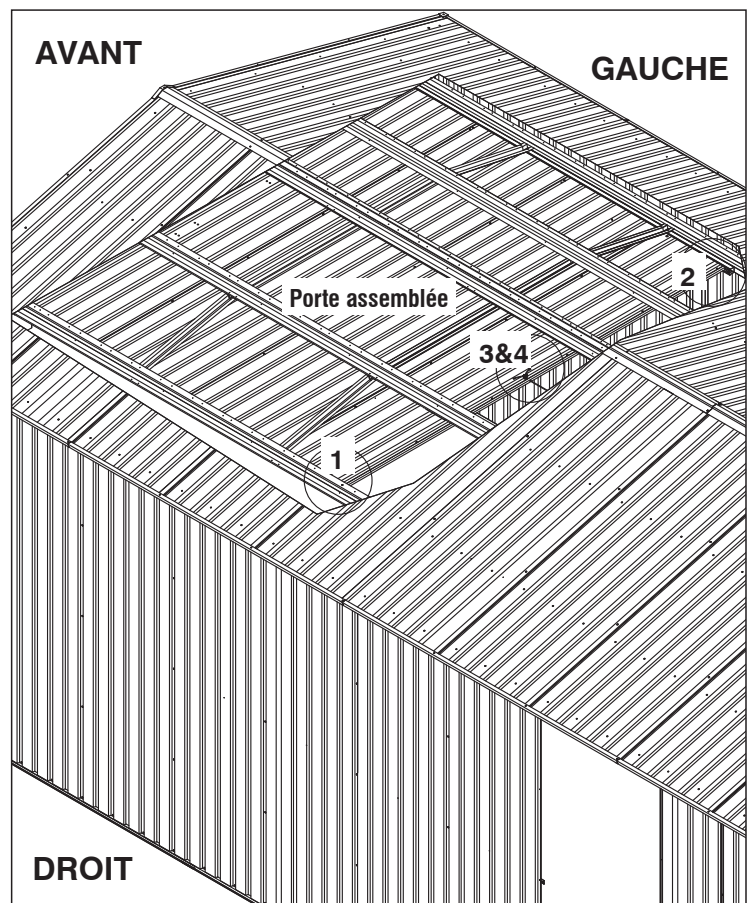


Sch.2



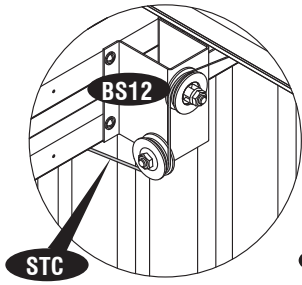
Sch.3

Sch.4

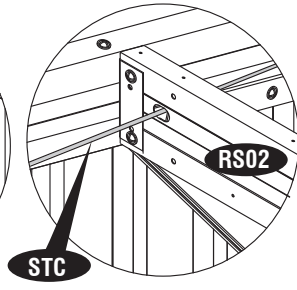


DROIT

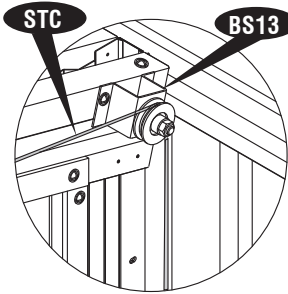
Étape - 9



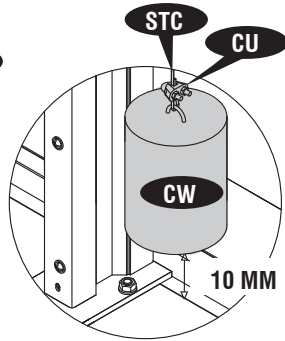
Sch.1



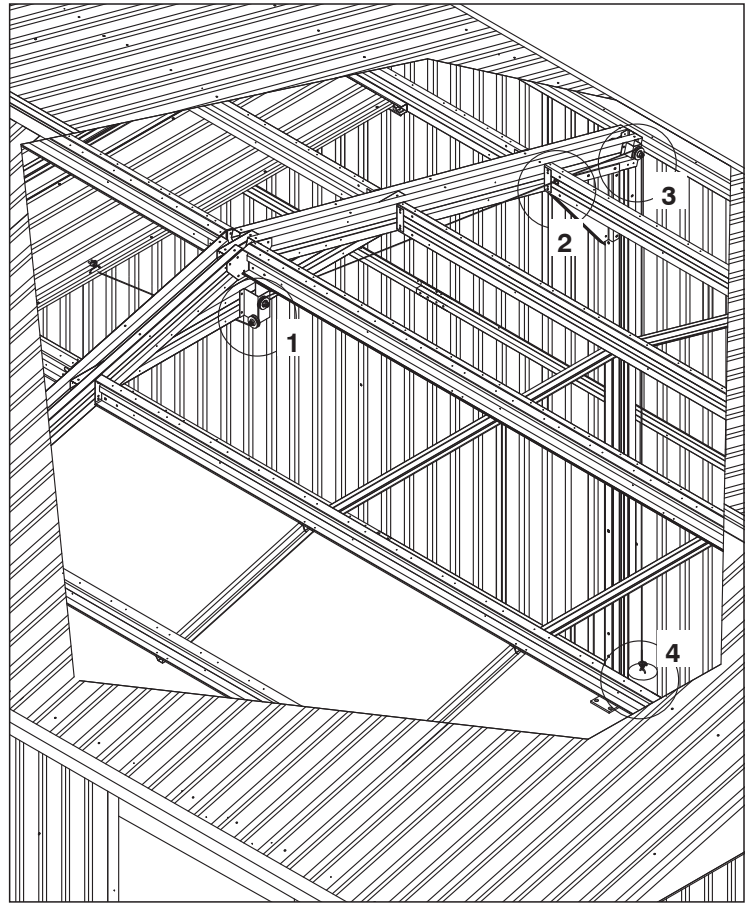
Sch.2



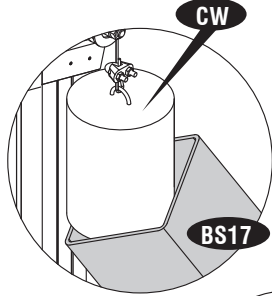
Sch.3



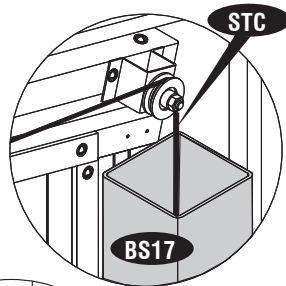
Sch.4



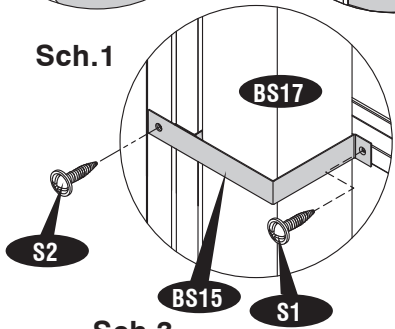
Étape - 10



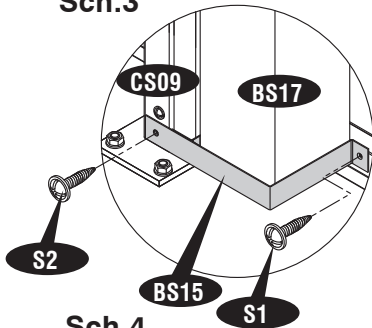
Sch.1



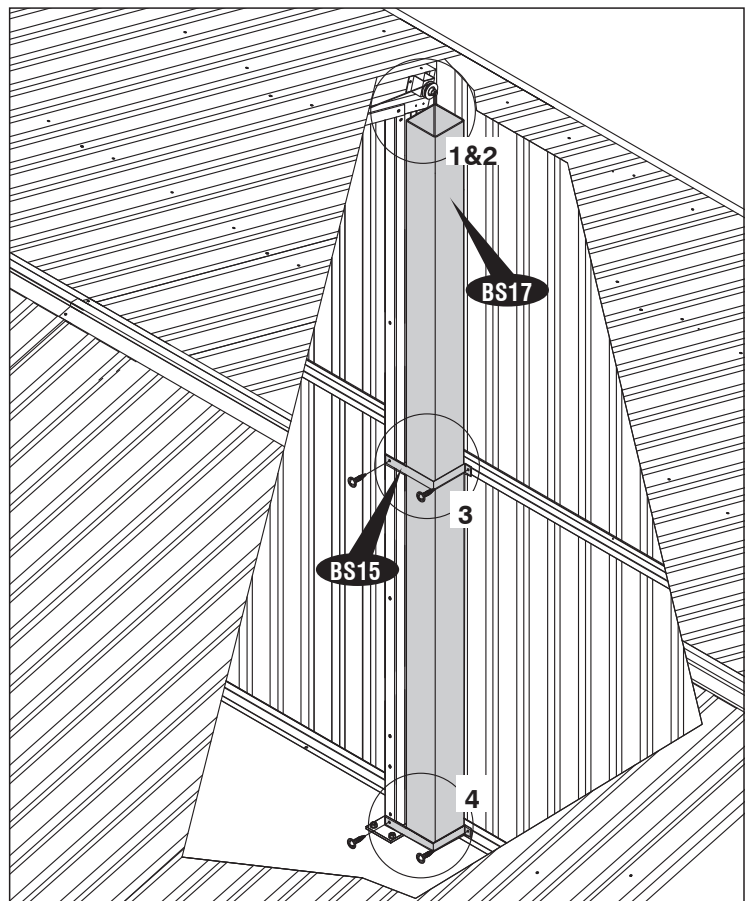
Sch.2



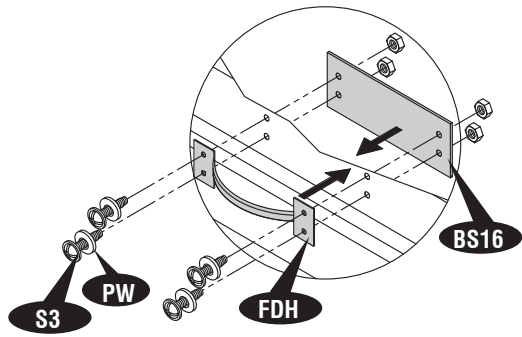
Sch.3



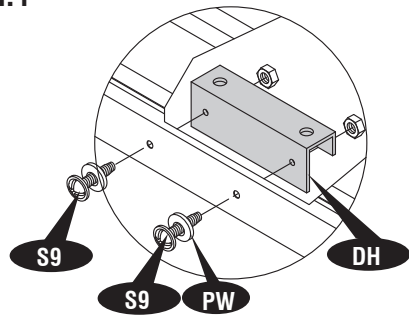
Sch.4



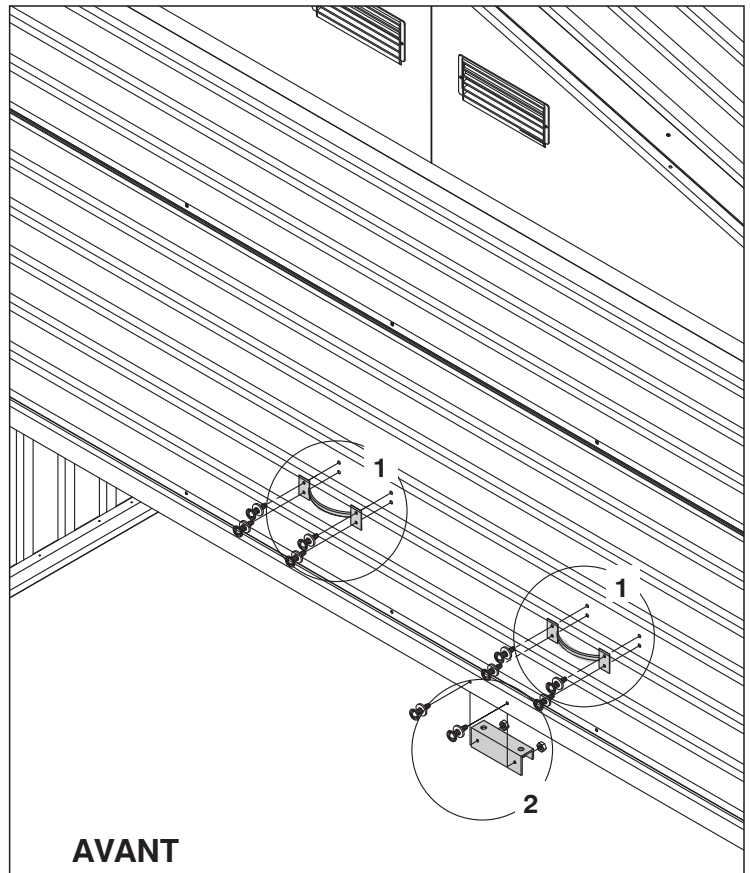
Étape - 11



Sch.1

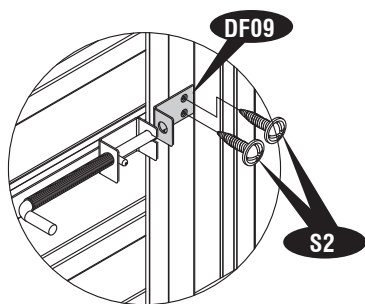


Sch.2

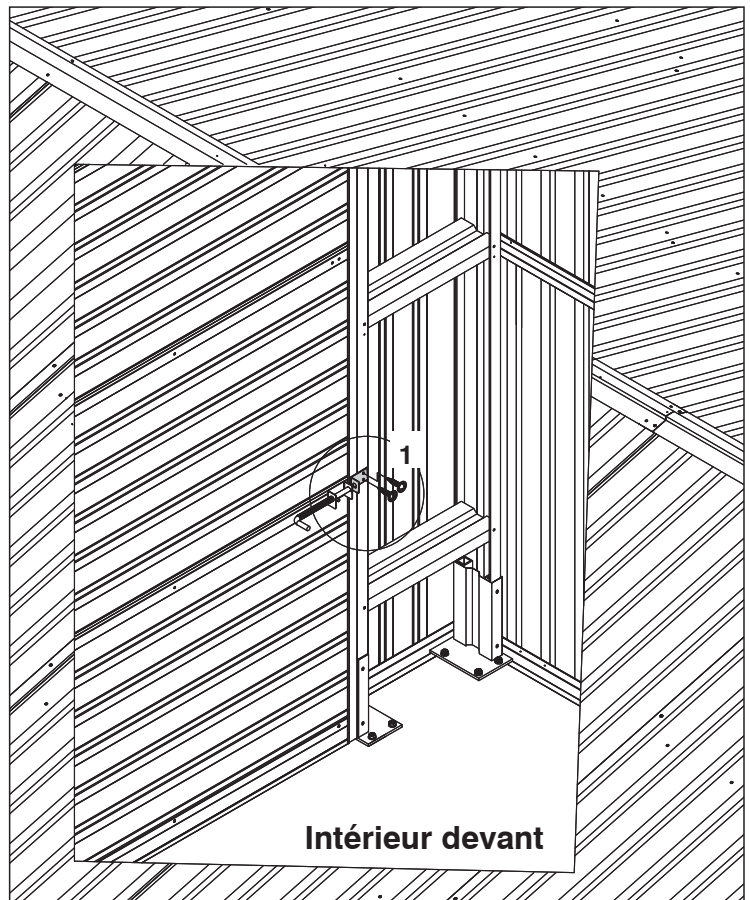


AVANT

Étape - 12



Sch.1

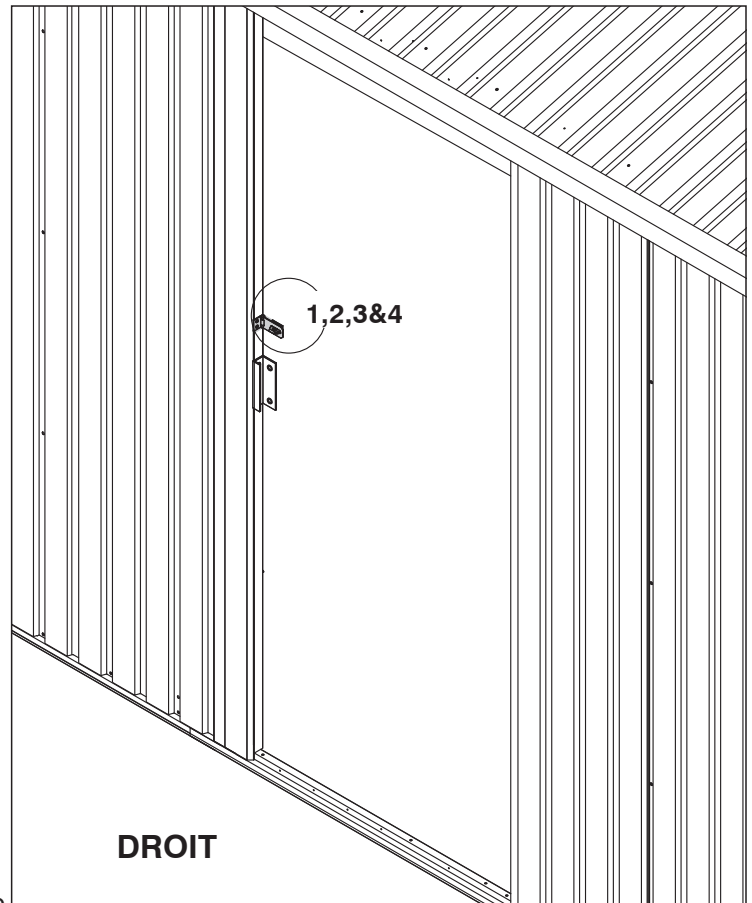
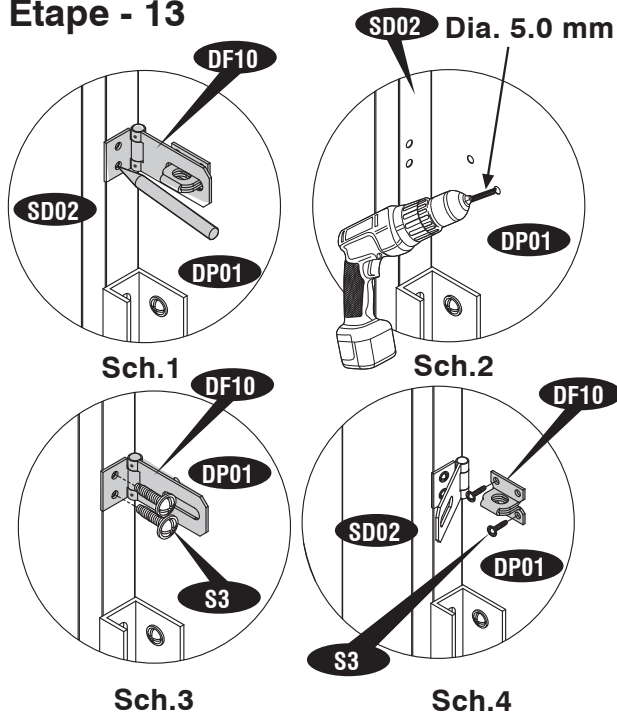


Intérieur devant

ATTENTION : “ Veuillez tenir la porte frontière du garage pendant sa cloture, jusqu’a cloture finale ”.

IMPORTANT: UTILISER LES GANTS POUR PREVENIR LES BLESSURES

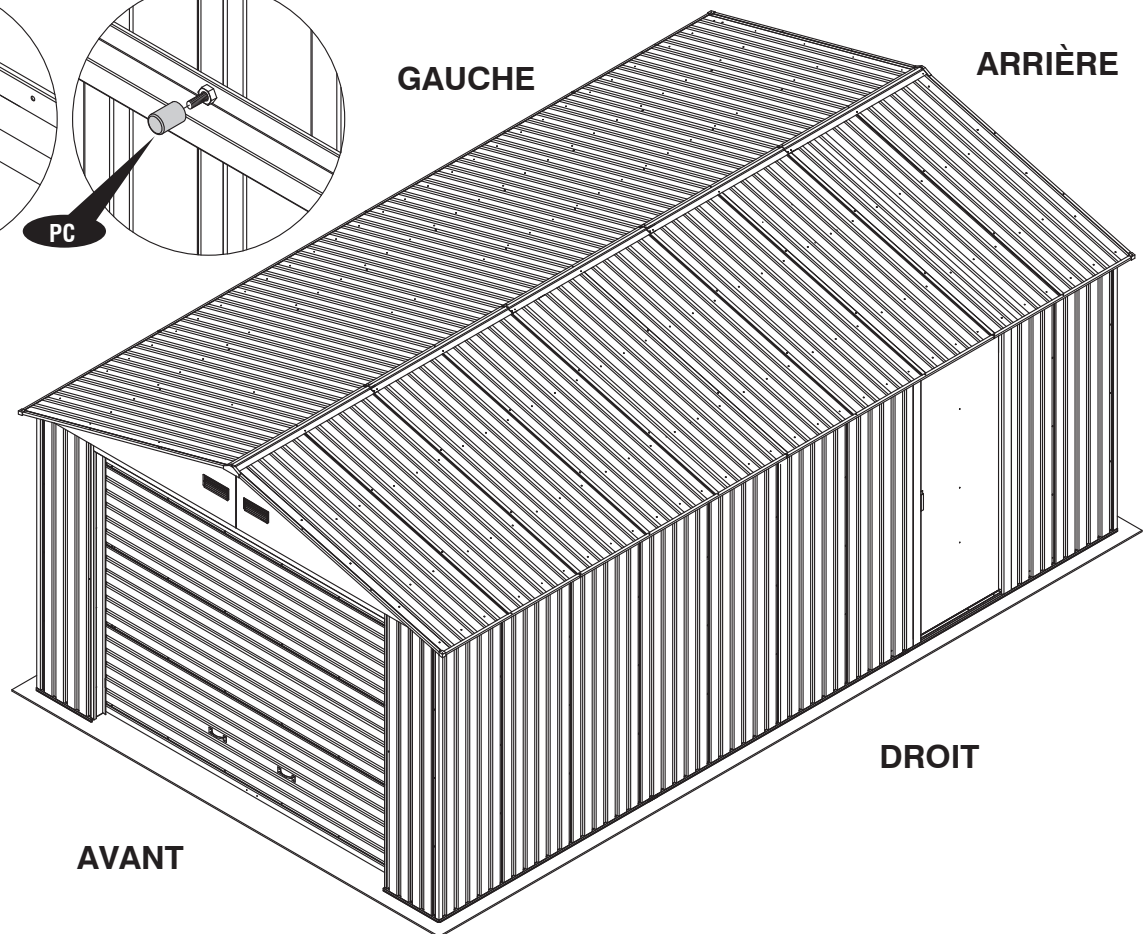
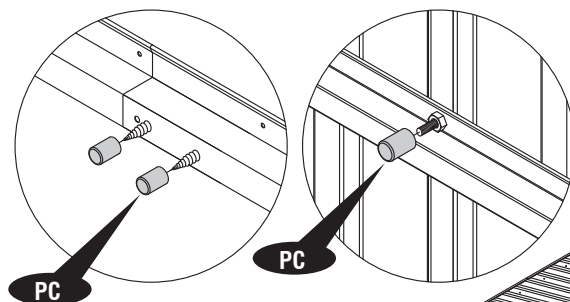
Étape - 13



IMPORTANT

Étape - 14

Fixez le chapeau à vis plastique (PC) aux vis et aux bords des boulons de l'intérieur pour éviter la blessure.





U.S. Polymers, Inc.
1057 S. Vail Ave
Montebello, CA 90640,
United States of America

French

RD-3.0 | 2014-06-24