



## BRIEF INFORMATION

### Oval 100 LED Gen. II

- Powerful LED worklight
- Modular series – easy conversion
- More than twice as much light as Generation I

### PRODUCT FEATURES

The Oval 100 LED worklights supplement the halogen and xenon variants already in the modular series with efficient LED technology. The headlamp can be operated at both 12 V and 24 V. The integrated electronics protect the device in the event of polarity inversion and guarantee constant brightness, even when the operating voltage fluctuates between 9 and 33 volts.

The light output is a powerful 4,000 lumen which means that the Oval 100 LED Gen. II can replace the xenon worklights without any problems. The light is distributed by a specially developed multi-faceted reflector, thus ensuring homogeneous illumination. The Oval 100 LED can be installed upright (0°) or suspended (180°). At 6,500° Kelvin, the light of the LED worklight is very similar to daylight. This means that colours can be distinguished more clearly in the dark than in the yellowish light of halogen bulbs. This makes sensory perception through the human eyes much easier and they tire less quickly.

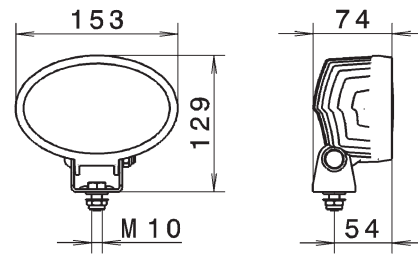
The worklight's black housing is made of aluminium and incorporates cooling fins. These ensure sufficient heat dissipation from the 8 high-power LEDs. In addition, a sensor protects the worklight from overheating. This is the only way in which the long service life of the LEDs (up to 30 times longer than a xenon gas discharge lamp) can be exploited. The integrated electronics are protected against inverse polarity and equipped with an LED fault jumper.

# TECHNICAL DETAILS

## Technical Data

|                                     |                            |
|-------------------------------------|----------------------------|
| Operating voltage/<br>Rated voltage | 9–33 V                     |
| Recommended angle of<br>inclination | Close-range: 12°, long: 5° |
| Light source type                   | 8 high-power LEDs          |
| Power consumption                   | 56 W (12 V), 54 W (24 V)   |
| Light output                        | 4,000 lm                   |
| Colour temperature                  | 6,500° kelvin              |
| Protection class                    | IP 6K9K and IP 6K8         |
| Type approval                       | Ⓔ, ECE-R10                 |
| Housing                             | Aluminium die cast         |
| Light exit area                     | 135 x 85 mm                |
| Weight                              | 920 g                      |

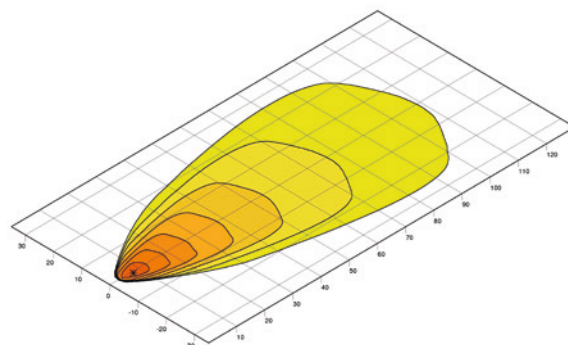
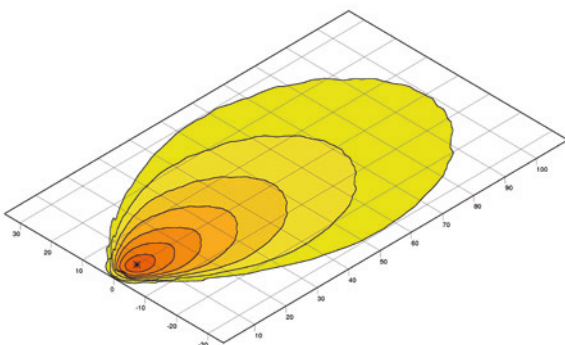
## Dimensional sketch



# RANGE OVERVIEW

| 1GA 996 761-...               | -001  | -011  |
|-------------------------------|-------|-------|
| Close-range illumination      | X     | -     |
| Long-range illumination       | -     | X     |
| Upright mounting              | X     | X     |
| Suspended mounting            | X     | X     |
| Bracket width                 | 42 mm | 42 mm |
| DEUTSCH plug                  | X     | X     |
| Nylon lens                    | X     | X     |
| Protected against overheating | X     | X     |
| Polarity reversal protection  | X     | X     |

# LIGHT DISTRIBUTION



Close-range illumination

Long-range illumination

