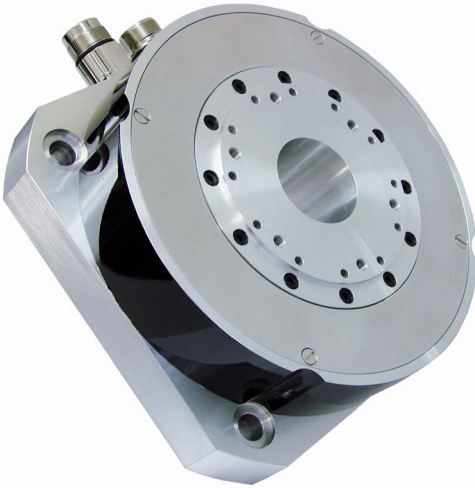


NEW

Torque Motors KTY-F



The new Torque Motor series KTY-F expands the existing series KTY-Q and KTY-R for direct drive applications that require a very compact design. The flat style Torque Motor series KTY-F enables extremely space saving solutions. Now very challenging and highly precise direct drive applications for difficult environments are possible.

The KTY-F series is available in three frame sizes in three length versions each. The rated torque range from 6.5 to 50 Nm is covered in user friendly torque and size steps.

Main features

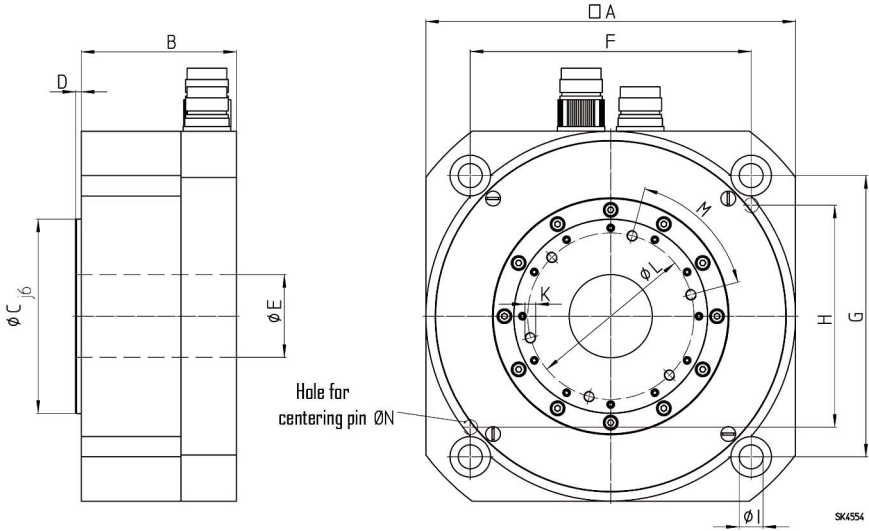
- Extremely good dynamics due to low moment of inertia values
- High overloading capability
- High positioning accuracy due to high-resolution encoder systems avoiding components that are susceptible to backlash and friction
- Motors available with hollow shaft, full shaft, blind hole shaft, flange and shrink disk
- Permissible radial and axial force can be increased if required
- Optionally available with safety brake (holding brake)

Technical characteristics

TYPE	Number of poles p	Rated torque M_N [Nm]	Rated speed n_N [rpm]	Rated voltage U_N [V]	Rated current I_N [A]
KTY 5222.05 F-Rx/230	22	6.5	500	230	1.2
KTY 5223.05 F-Rx/230	22	9.2	500	230	1.8
KTY 5224.05 F-Rx/230	22	12	500	230	2.3
KTY 6282.04 F-Rx/230	28	17	400	230	2.6
KTY 6283.04 F-Rx/230	28	24.5	400	230	3.8
KTY 6284.04 F-Rx/230	28	32	400	230	4.9
KTY 7422.02 F-Rx/230	42	26	250	230	2.5
KTY 7423.02 F-Rx/230	42	37.5	250	230	3.6
KTY 7424.02 F-Rx/230	42	50	250	230	4.8

Other versions and customer specific adaptations upon request

Dimensions



TYPE	A	B	C	D	E	F	G	H	I	K	L	M	N
KTY 5222.xx F..	150	90	65	3	27.5	120	120	90	11	M6	50	4x 90°	6
KTY 5223.xx F..	150	95	65	3	27.5	120	120	90	11	M6	50	4x 90°	6
KTY 5224.xx F...	150	105	65	3	27.5	120	120	90	11	M6	50	4x 90°	6
KTY 6282.xx F..	200	69	105	3	45	152	152	120	13	M6	90	6x 60°	8
KTY 6283.xx F..	200	74	105	3	45	152	152	120	13	M6	90	6x 60°	8
KTY 6284.xx F..	200	84	105	3	45	152	152	120	13	M6	90	6x 60°	8
KTY 7422.xx F..	250	69	130	3	45	200	200	160	13	M6	120	8x 45°	8
KTY 7423.xx F..	250	74	130	3	45	200	200	160	13	M6	120	8x 45°	8
KTY 7424.xx F..	250	84	130	3	45	200	200	160	13	M6	120	8x 45°	8

Technical details

- Top quality rare-earth magnets
- Optimized lamination
- Vibration class R, vibration class S in accordance with DIN VDE 0530-14 (on request)
- Flange dimensions standardized in accordance with DIN 42 677 (special flanges optionally available)
- Flange accuracy in accordance with DIN 42 955
- Full shaft with/without feather key, hollow shaft with shaft end at A and/or B side, blind hole shaft, shaft with shrink disk or flange (on request)
- Protection class IP 54, please contact factory for higher degrees of protection
- Insulation class F
- Upon request connection via angled connectors or via cables

Subject to changes without prior notice

GEORGII KOBOLD

GEORGII KOBOLD GmbH & Co. KG
 Ihlinger Straße 57 • D-72160 Horb
 Tel.+49(0)7451 5394-0 • Fax.+49(0)7451 5394-53
 info@georgii-kobold.de • www.georgii-kobold.de