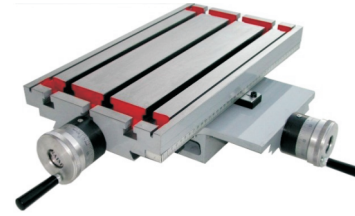
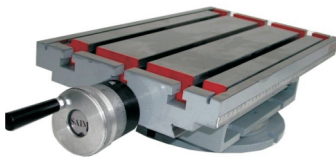


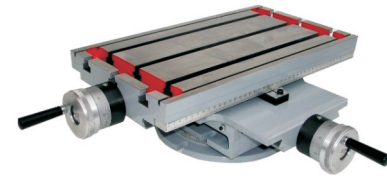
430 - X



430 - XY



430 - XG



430 - XYG

Technik

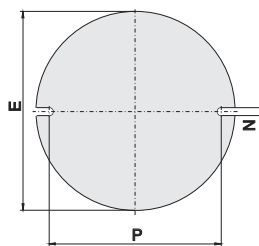
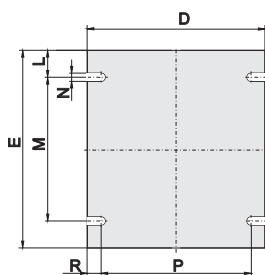
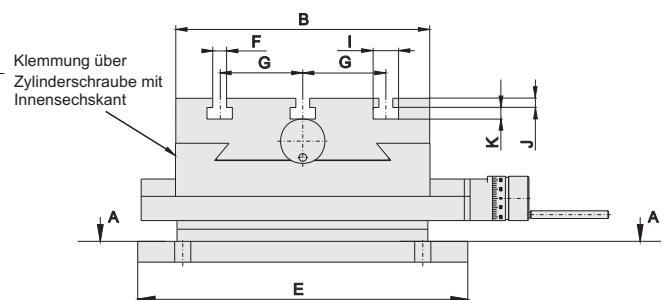
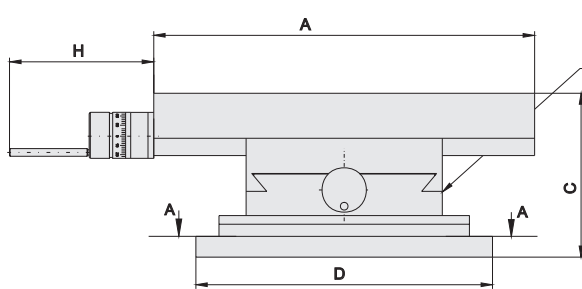
- Feingeschliffene Schwalbenschwanzführungen
- Tischflächen entsprechend planparallel und winkelgenau
- Spindel gehärtet + geschliffen, Steigungsgenauigkeit 0,01 auf 300 mm
- Geschlitzte Bronzemutter
- Millimetermaßstäbe mit Zeigern
- Große Skalenringe, verstellbar und hartverchromt
- Feststellung mittels Klemmschrauben
- Hohe Belastbarkeit
- Material GG
- Spindel axial und radial gelagert
- Parallele Zustelleisten für sichere Führung

Technique

- *Fine ground dovetail guideways*
- *Table surfaces accordingly plane parallel and angleaccurate*
- *Spindles hardened and grounded, pitch accuracy 0,01 of 300 mm*
- *Slotted bronze nut*
- *Millimetre scales with pointers*
- *Big scale rings, adjustable and hard chromium plated*
- *Locking via clamping screws*
- *High load carrying ability*
- *Material GG*
- *Spindles with axial and radial bearings*
- *Parallel feed gibs for safe guiding*
- *Guides, nuts and spindles always covered*

Kompakte Kreuztische *Compact cross tables*

Typ Type	A x B mm	Hub/ Stroke X mm	Hub/ Stroke Y mm	C mm	D mm	E mm	G mm	H mm	T-Nuten/T-grooves				L mm	M mm	N mm	P mm	R mm	Gewicht Weight kg	Steigung Pitch mm	Last Load kg	Art. - Nr. Art. - no.
									F mm	I mm	J mm	K mm									
240 X	240x190	120		75	155	195	72	127	12	22	7	10	47,5	100	9	140	7,5	14	4	55	1029695
240 XY	240x190	120	140	108	155	195	72	127	12	22	7	10	47,5	100	9	140	7,5	20	4	55	1029696
240 XG	240x190	120		98	∅ 195	72	127	12	22	7	10			9	180	7,5	19	4	55	1029697	
240XYG	240x190	120	140	131	∅ 195	72	127	12	22	7	10			9	180	7,5	24	4	55	1029698	
340 X	340x190	200		75	155	195	72	127	12	22	7	10		9	140	7,5	18	4	105	1029700	
340 XY	340x190	200	140	108	155	195	72	127	12	22	7	10	47,5	100	9	140	7,5	25	4	105	1029701
340 XG	340x190	200		98	∅ 195	72	127	12	22	7	10	47,5	100	9	180	7,5	22	4	105	1029702	
340 XYG	340x190	200	140	131	∅ 195	72	127	12	22	7	10			9	180	7,5	30	4	105	1029703	
430 X	430x240	280		93,5	190	260	72	127	12	22	10	10			11	170	10	32	4	270	1029705
430XY	430x240	280	180	120	190	260	72	127	12	22	10	10			11	170	10	40	4	270	1029706
430 XG	430x240	280		116,5	∅ 240	72	127	12	22	10	10	60	140	11	220	10	35	4	270	1029707	
430 XYG	430x240	280	180	143	∅ 240	72	127	12	22	10	10	60	140	11	220	10	50	4	270	1029708	
600 X	600x240	400		93,5	190	260	72	127	12	22	10	10			11	170	10	43	4	270	1029710
600 XY	600x240	400	180	120	190	260	72	127	12	22	10	10			11	170	10	52	4	270	1029711
600 XG	600x240	400		116,5	∅ 240	72	127	12	22	10	10			11	220	10	46	4	270	1029712	
600 XYG	600x240	400	180	143	∅ 240	72	127	12	22	10	10	53	140	11	220	10	61	4	270	1029713	
800 X	800x280	500		115,5	240	290	72	127	12	22	10	10	53	140	11	215	12	75	3	290	1029715
800 XY	800x280	500	250	144	240	290	72	127	12	22	10	10			11	215	5	93	3	290	1029716
800 XG	800x280	500		144	∅ 290	72	127	12	22	10	10			14	270	12	80	3	290	1029717	
800 XYG	800x280	500	250	5	∅ 290	72	127	12	22	10	10			14	270	5	108	3	290	1029718	
1000 X	1000x31	700		173	240	290	72	127	12	22	10	10	53	184	11	215	12	95	3	340	1029720
1000 XY	5	700	250	115,5	240	290	72	127	12	22	10	10	53	184	11	215	5	150	3	340	1029721



Schnitt A - A für Typ X, XY
Profile A - A for type X, XY

Schnitt A - A für Typ G mit drehbarer Grundplatte
Profile A - A for type G with swivelling baseplate

IEF Werner GmbH

Wendelhofstraße 6
D - 78120 Furtwangen
Telefon +49-7723/925-0
Telefax +49-7723/925-100
info@ief-werner.de
www.ief-werner.de