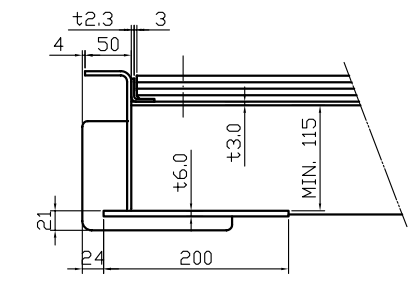
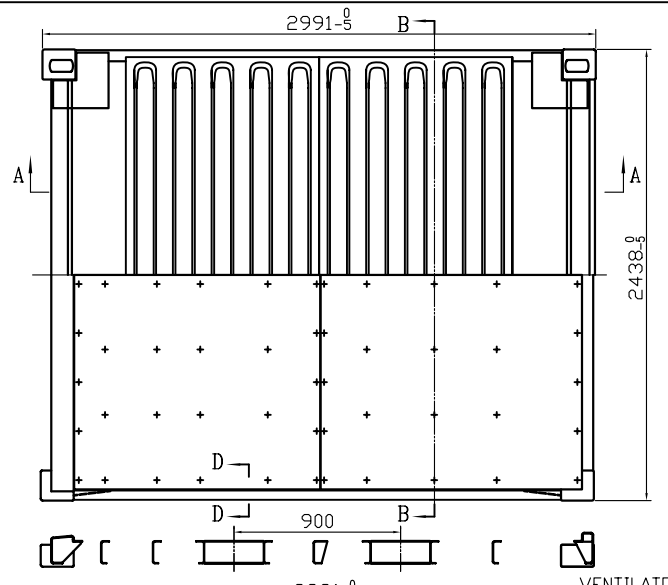
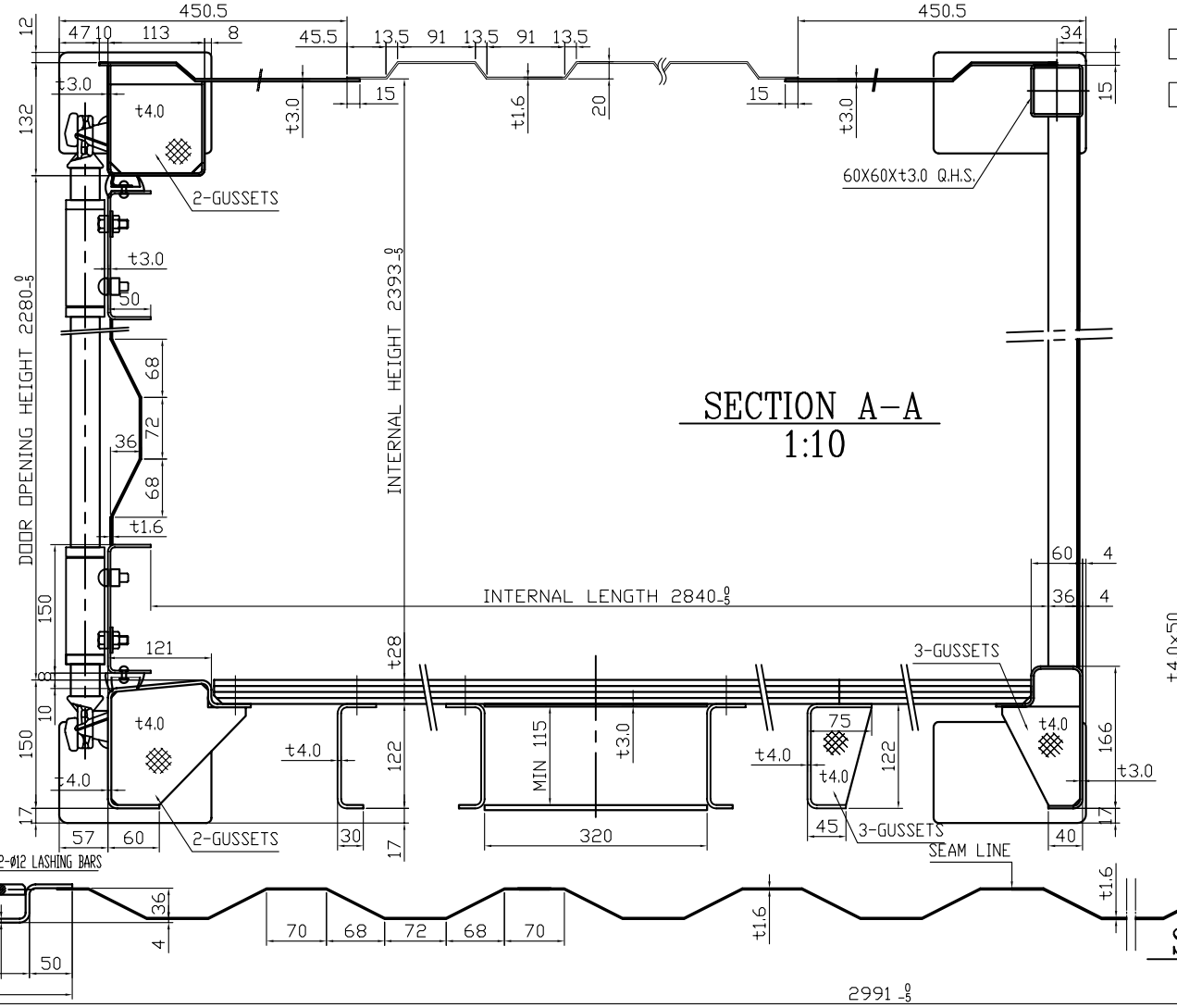
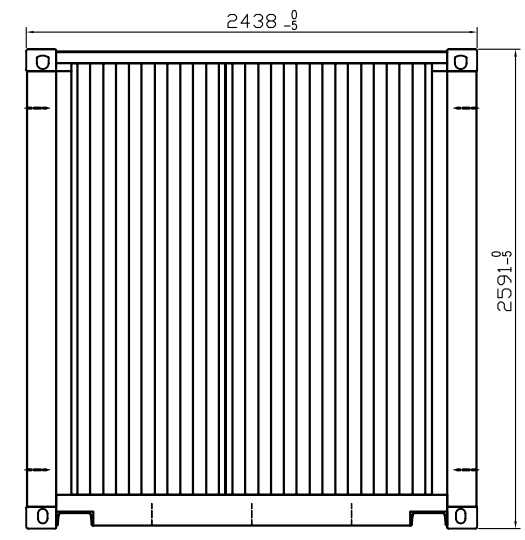
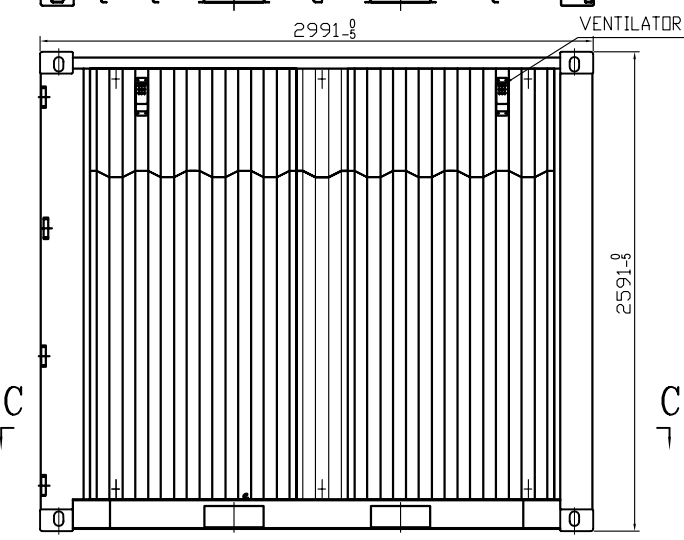
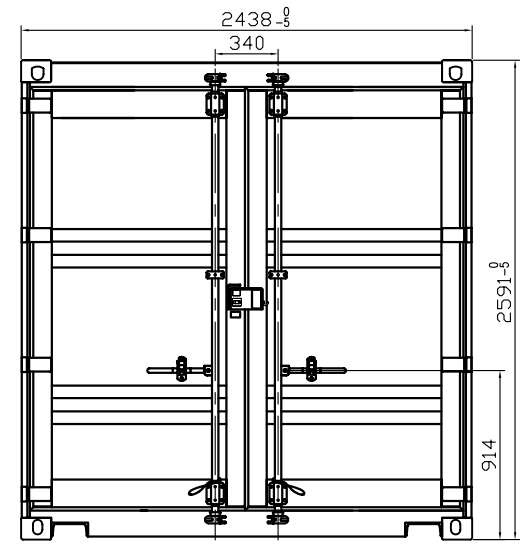


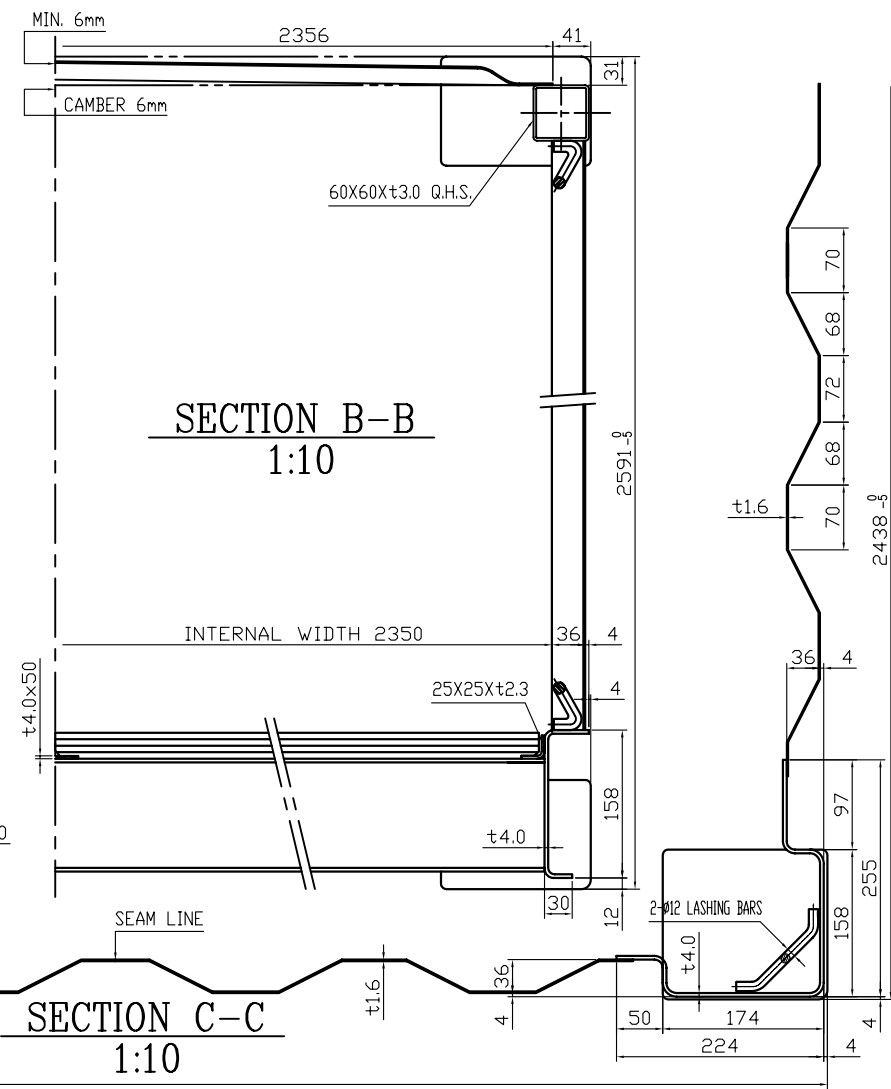
PART NAME	MATERIAL	REMARK
FRAME	SIDE RAIL	SPA-H
	END RAIL	SPA-H
	CORNER POST	SM50A/SPA-H
	CROSS MEMBER	SPA-H
PANEL	DOOR	SPA-H
	ROOF	SPA-H
	SIDE	SPA-H
	FRONT	SPA-H
WOODEN FLOOR	APITONG/HARDWOOD	
DOOR LOCKING ROD ASS'Y	"SJ-66M" TYPE	



SECTION D-D  
1:10



SECTION A-A  
1:10



SECTION B-B  
1:10

SECTION C-C  
1:10

CLASSIFICATION		DIMENSION			
EXTERNAL	LENGTH	2,991	+0 -5mm	9' 9 3/4"	+0 -3/16"
	WIDTH	2,438	+0 -5mm	8' 0"	+0 -3/16"
	HEIGHT	2,591	+0 -5mm	8' 6"	+0 -3/16"
INTERNAL	LENGTH	2,840	mm	9' 3 13/16"	
	WIDTH	2,350	mm	7' 8 1/2"	
	HEIGHT	2,393	mm	7' 10 3/32"	
DOOR OPENING	WIDTH	2,342	mm	7' 8 3/16"	
	HEIGHT	2,280	mm	7' 5 3/4"	
INTERNAL CUBIC CAPACITY	16.0	CU.m	564	CU.ft	
MAXIMUM GROSS WEIGHT	10,160	kg	22,400	lb	
TARE WEIGHT	1,250	kg	2,755	lb	
MAXIMUM PAYLOAD	8,910	kg	19,645	lb	
STACKING TEST LOAD(PER POST)	22,860	kg	50,400	lb	
FLOOR STRENGTH LOAD	5,460	kg	12,040	lb	

DRAWING NO.	DESCRIPTION	REMARK
RXTC-10ITX-100B	BASE ASSEMBLY	
RXTC-10ITX-200AB	DOOR ASSEMBLY	
RXTC-10ITX-300	ROOF ASSEMBLY	
RXTC-10ITX-400A	SIDE ASSEMBLY	R/H:1 L/H:1
RXTC-10ITX-500-2	FRONT ASSEMBLY	

DRAWING NO.				TITLE:		OWNER	
RXTC-10ITX-00AS				GENERAL ASSEMBLY		ISO-IDD 10'x8'x8'6"	
2014.06.16				总图		V(NG) SCALE	
2014.06.16				DRAWING NO.		Rongjiao Logistics Equipment Co., Ltd.	