

BTL12-120S (12V / 120Ah)

BTL series is a general-purpose battery with 10 years design life in float service. With updated AGM valve regulated technology and high purity raw materials, the BTL series battery maintains high consistency for better performance and reliable standby service life. It is suitable for UPS, DC-power systems, emergency light and security system applications.



Specifications		
Nominal Voltage	12V	
Nominal Capacity	120.0Ah	
Dimensions	Length	328 ± 2mm
	Width	172 ± 2mm
	Height	215 ± 2mm
	Total height (with terminal)	220 ± 2mm
Approx. Weight	32.0kg	
Terminals	F12, M8 screw terminals	
Container Material	Acrylnitril-Butadien-Styrol (ABS)	
Permitted installation position	Max. 90° to upright normal position (see picture above right)	
Rated Capacity	120.0Ah	20h discharge, 1.80V / cell, 25°C
	110.0Ah	10h discharge, 1.80V / cell, 25°C
	98.5Ah	5h discharge, 1.75V / cell, 25°C
	85.5Ah	3h discharge, 1.75V / cell, 25°C
Max. Discharge Current	1100A (5s)	
Internal Resistance	Approx. 4.2mΩ	
Operating temperature range	Discharge	-20 ~ 60°C
	Charge	0 ~ 50°C
	Storage (charged)	-20 ~ 60°C
Recommended operating temperature	Approx. 20°C	
Max. charging current	33A	
Charging voltage	Boost charge	Voltage 14.4 V ~ 15.0V @ 25°C Temperature coefficient -30mV/°C
	Float charging	Voltage 13.5V ~ 13.8V @ 25°C Temperature coefficient -20 mV/°C
Capacity affected by temperature	40°C	104%
	25°C	100%
	0°C	83%
Self-discharge	EFFEKTA BTL series batteries should be recharged at least every 6 months when stored at 25°C. At higher temperatures, the time interval is shortened.	

Discharge at constant current (ampere) at 25°C											
F.V/time	10min	15min	30min	1h	2h	3h	4h	5h	8h	10h	20h
1.85V/cell	188.7	151.3	93.1	56.7	35.3	26.3	21.6	18.4	12.5	10.7	5.55
1.80V/cell	209.4	165.7	100.5	60.4	37.1	27.5	22.5	19.1	12.9	11.0	5.70
1.75V/cell	226.0	177.1	106.2	63.3	38.5	28.5	23.2	19.7	13.2	11.3	5.82
1.70V/cell	239.0	186.0	110.6	65.5	39.6	29.2	23.7	20.1	13.5	11.5	5.90
1.65V/cell	249.0	192.8	114.0	67.1	40.4	29.7	24.1	20.4	13.6	11.6	5.97
1.60V/cell	256.7	198.0	116.6	68.4	41.0	30.1	24.4	20.6	13.8	11.7	6.01

Discharge at constant power (watts / cell) at 25°C											
F.V/time	10min	15min	30min	1h	2h	3h	4h	5h	8h	10h	20h
1.85V/cell	356.2	288.5	180.6	110.9	69.7	52.1	42.8	36.6	25.0	21.4	11.2
1.80V/cell	388.5	311.6	192.9	117.3	72.9	54.3	44.5	37.9	25.8	22.1	11.5
1.75V/cell	412.1	328.4	201.9	122.4	75.2	55.9	45.7	38.9	26.4	22.6	11.7
1.70V/cell	428.0	339.9	208.2	126.0	76.9	57.0	46.6	39.6	26.8	22.9	11.8
1.65V/cell	441.1	349.4	213.3	128.8	78.3	57.9	47.3	40.1	27.1	23.2	11.9
1.60V/cell	442.9	351.4	214.9	129.8	78.8	58.3	47.6	40.4	27.3	23.4	12.0

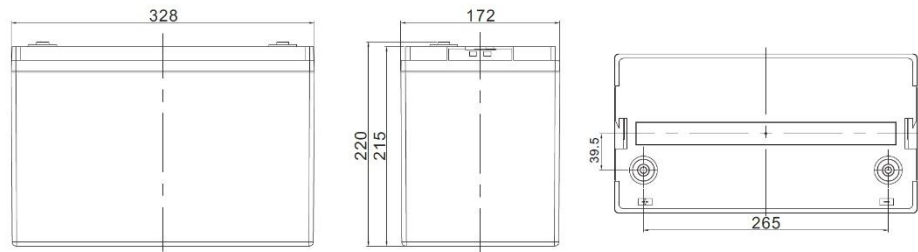
EFFEKTA®

Stromversorgungen
Power Supplies

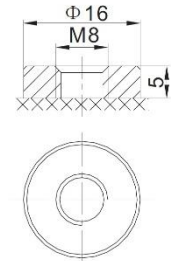
Dimensions

Unit: mm

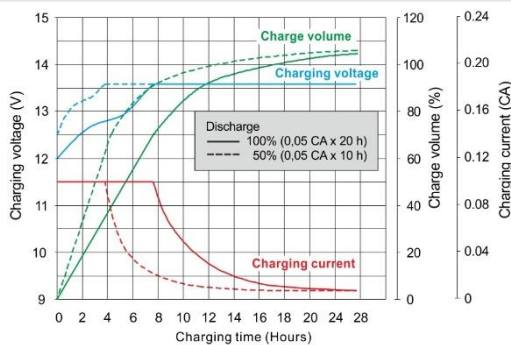
Dimensions: 328 (L) × 172 (W) × 215 (H)



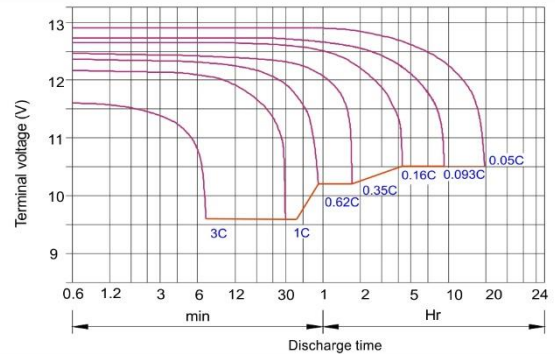
Terminal F12



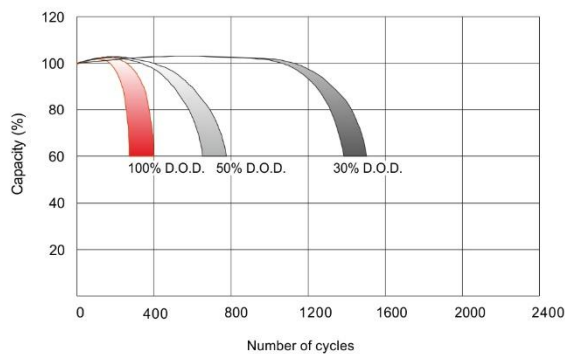
Float charging characteristics



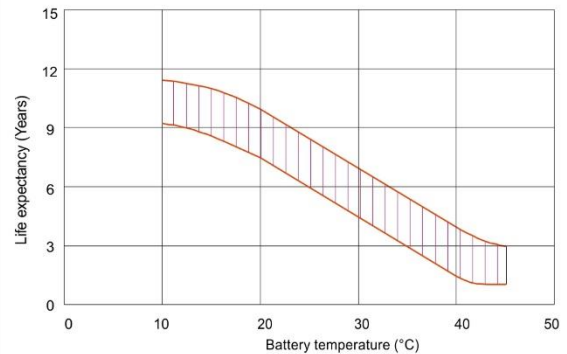
Discharge characteristics



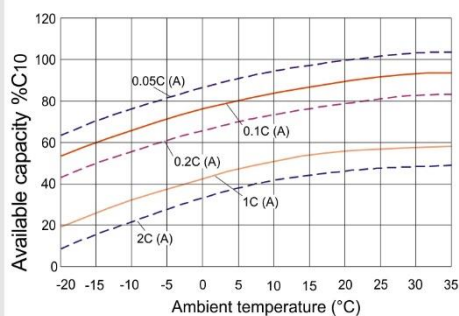
Charging cycle number in relation to discharge depth



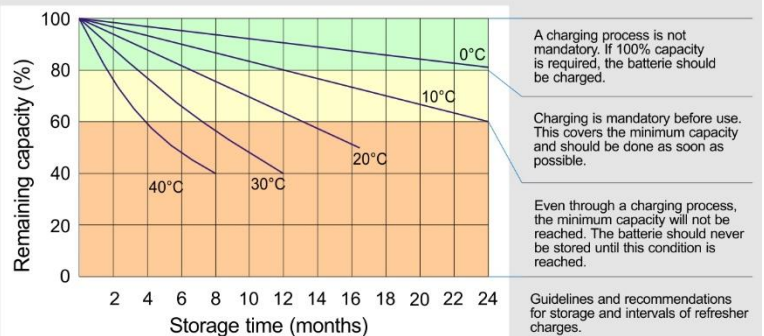
Temperature effect on the life expectancy



Effect of temperature on the capacity



Storage / self-discharge characteristics



EFFEKTA Regeltechnik GmbH
Rheinwaldstr. 34
D-78628 Rottweil
Germany

Tel.: +49 (0)741/17451-0
Fax: +49 (0)741/17451-22
Email: info@effekta.com
URL: www.effekta.com

