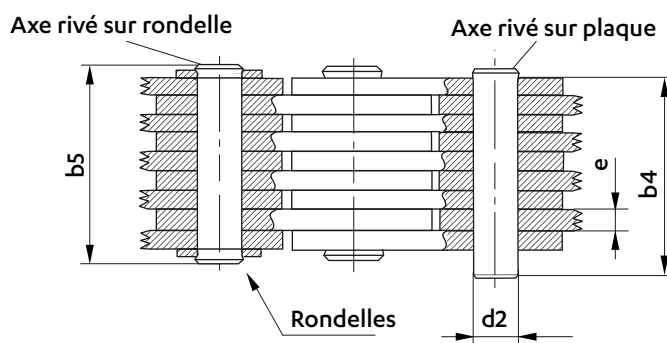
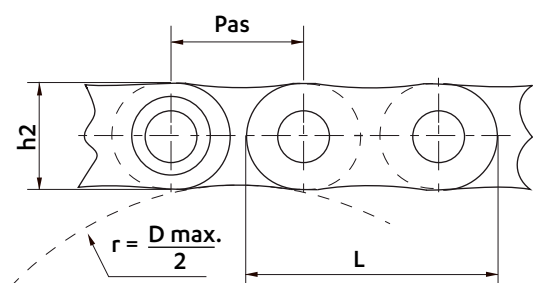


CHAÎNES À MAILLES JOINTIVES D'ÉQUILIBRAGE

Dimensions en mm

CHAÎNES À MAILLES JOINTIVES D'ÉQUILIBRAGE



| Versions    | Plaques          | Fuseaux             |
|-------------|------------------|---------------------|
| Version I   | Acier non traité | Acier non traité    |
| Version II  | Acier non traité | Acier non traité    |
| Version III | Acier traité     | Acier allié cimenté |

| Pas  | Combinaison | FUSEAUX  |                         | PLAQUES                   |          | TAMBOUR  |                               | VERSION I         |                               | VERSION II        |                               | VERSION III       |                 | Surface de travail | Masse |       |
|------|-------------|----------|-------------------------|---------------------------|----------|----------|-------------------------------|-------------------|-------------------------------|-------------------|-------------------------------|-------------------|-----------------|--------------------|-------|-------|
|      |             | Diamètre | LONGUEUR                | Épaisseur                 | Longueur | Diamètre | Résistance mini à la traction | Charge de travail | Résistance mini à la traction | Charge de travail | Résistance mini à la traction | Charge de travail | mm <sup>2</sup> |                    |       | kg/m  |
| P    | n et n+1    | d2       | Rivés sur mailles<br>b4 | Rivés sur rondelles<br>b5 | e        | L        | min.                          | max.              | kN                            | kN                | kN                            | kN                | kN              | kN                 |       |       |
| 40   | 1-2         | 14,4     | 27                      | 33                        | 6        | 77       | 80                            | 93                | 38                            | 7,7               | 48                            | 8,6               | 56              | 9,4                | 86    | 4,6   |
|      | 2-3         |          | 40                      | 46                        |          |          |                               |                   | 77                            | 15,5              | 96                            | 17,2              | 114             | 19,0               | 172   | 7,5   |
|      | 3-4         |          | 53                      | 59                        |          |          |                               |                   | 116                           | 23,3              | 114                           | 26,0              | 170             | 28,5               | 259   | 10,4  |
|      | 4-5         |          | 65                      | 71                        |          |          |                               |                   | 155                           | 31,0              | 190                           | 34,5              | 230             | 38,0               | 345   | 13,3  |
|      | 5-6         |          | 78                      | 84                        |          |          |                               |                   | 195                           | 39,0              | 240                           | 43,0              | 280             | 47,0               | 432   | 16,2  |
|      | 6-7         |          | 90                      | 96                        |          |          |                               |                   | 230                           | 46,0              | 290                           | 52,0              | 340             | 57,0               | 518   | 19,1  |
|      | 7-8         |          | 103                     | 109                       |          |          |                               |                   | 270                           | 54,0              | 330                           | 60,0              | 400             | 66,0               | 604   | 22,0  |
|      | 8-9         |          | 116                     | 122                       |          |          |                               |                   | 310                           | 62,0              | 380                           | 69,0              | 450             | 76,0               | 691   | 25,0  |
|      | 9-10        |          | 128                     | 134                       |          |          |                               |                   | 350                           | 70,0              | 430                           | 78,0              | 510             | 85,0               | 777   | 28,0  |
|      | 60          |          | 1-2                     | 21,6                      |          |          |                               |                   | 33                            | 41                | 8                             | 116               | 120             | 140                | 77    | 15,5  |
| 2-3  |             | 50       | 58                      |                           | 155      | 31,0     | 190                           | 34,5              | 230                           | 38,0              |                               |                   |                 |                    | 345   | 14,6  |
| 3-4  |             | 66       | 74                      |                           | 230      | 46,0     | 290                           | 52,0              | 340                           | 57,0              |                               |                   |                 |                    | 518   | 20,2  |
| 4-5  |             | 84       | 92                      |                           | 310      | 62,0     | 380                           | 69,0              | 450                           | 76,0              |                               |                   |                 |                    | 691   | 25,2  |
| 5-6  |             | 100      | 108                     |                           | 390      | 78,0     | 480                           | 86,0              | 570                           | 95,0              |                               |                   |                 |                    | 864   | 31,5  |
| 6-7  |             | 117      | 125                     |                           | 460      | 93,0     | 580                           | 103,0             | 680                           | 113,0             |                               |                   |                 |                    | 1036  | 37,1  |
| 7-8  |             | 133      | 141                     |                           | 540      | 109,0    | 670                           | 121,0             | 800                           | 133,0             |                               |                   |                 |                    | 1209  | 42,8  |
| 8-9  |             | 150      | 158                     |                           | 620      | 124,0    | 770                           | 138,0             | 910                           | 152,0             |                               |                   |                 |                    | 1382  | 48,5  |
| 9-10 |             | 166      | 174                     |                           | 700      | 140,0    | 860                           | 155,0             | 1020                          | 171,0             |                               |                   |                 |                    | 1555  | 54,0  |
| 90   |             | 1-2      | 32,4                    |                           | 44       | 54       | 11                            | 170               | 180                           | 210               |                               |                   |                 |                    | 160   | 32,0  |
|      | 2-3         | 67       |                         | 77                        | 320      | 64,0     |                               |                   |                               |                   | 400                           | 72,0              | 470             | 78,0               | 712   | 28,0  |
|      | 3-4         | 90       |                         | 100                       | 480      | 96,0     |                               |                   |                               |                   | 600                           | 108,0             | 700             | 117,0              | 1069  | 38,0  |
|      | 4-5         | 113      |                         | 123                       | 640      | 128,0    |                               |                   |                               |                   | 800                           | 144,0             | 940             | 157,0              | 1425  | 49,0  |
|      | 5-6         | 135      |                         | 145                       | 800      | 160,0    |                               |                   |                               |                   | 1000                          | 180,0             | 1170            | 196,0              | 1782  | 60,0  |
|      | 6-7         | 158      |                         | 170                       | 960      | 192,0    |                               |                   |                               |                   | 1200                          | 216,0             | 1400            | 235,0              | 2138  | 71,0  |
|      | 7-8         | 182      |                         | 194                       | 1120     | 224,0    |                               |                   |                               |                   | 1400                          | 250,0             | 1640            | 274,0              | 2494  | 81,0  |
|      | 8-9         | 205      |                         | 217                       | 1280     | 256,0    |                               |                   |                               |                   | 1600                          | 290,0             | 1880            | 314,0              | 2851  | 92,0  |
|      | 9-10        | 227      |                         | 339                       | 1440     | 288,0    |                               |                   |                               |                   | 1800                          | 320,0             | 2110            | 352,0              | 3207  | 103,0 |