



Max Lifting  
Height 9.46m

Working Radius 8.38m



Capacity  
2.93t x 1.5m

Weight  
4400kg

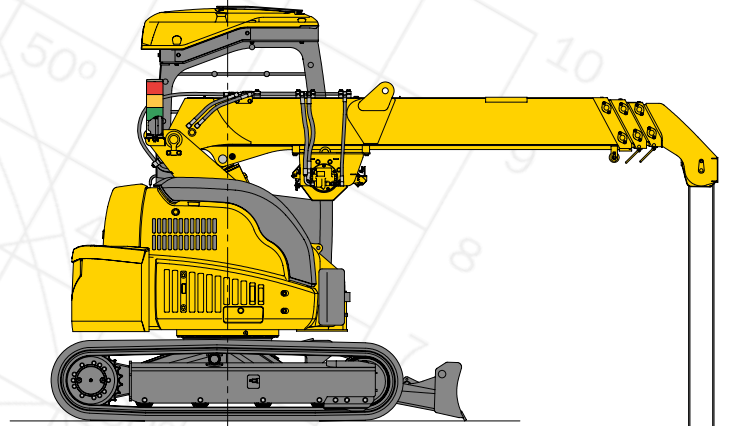
**CC423**



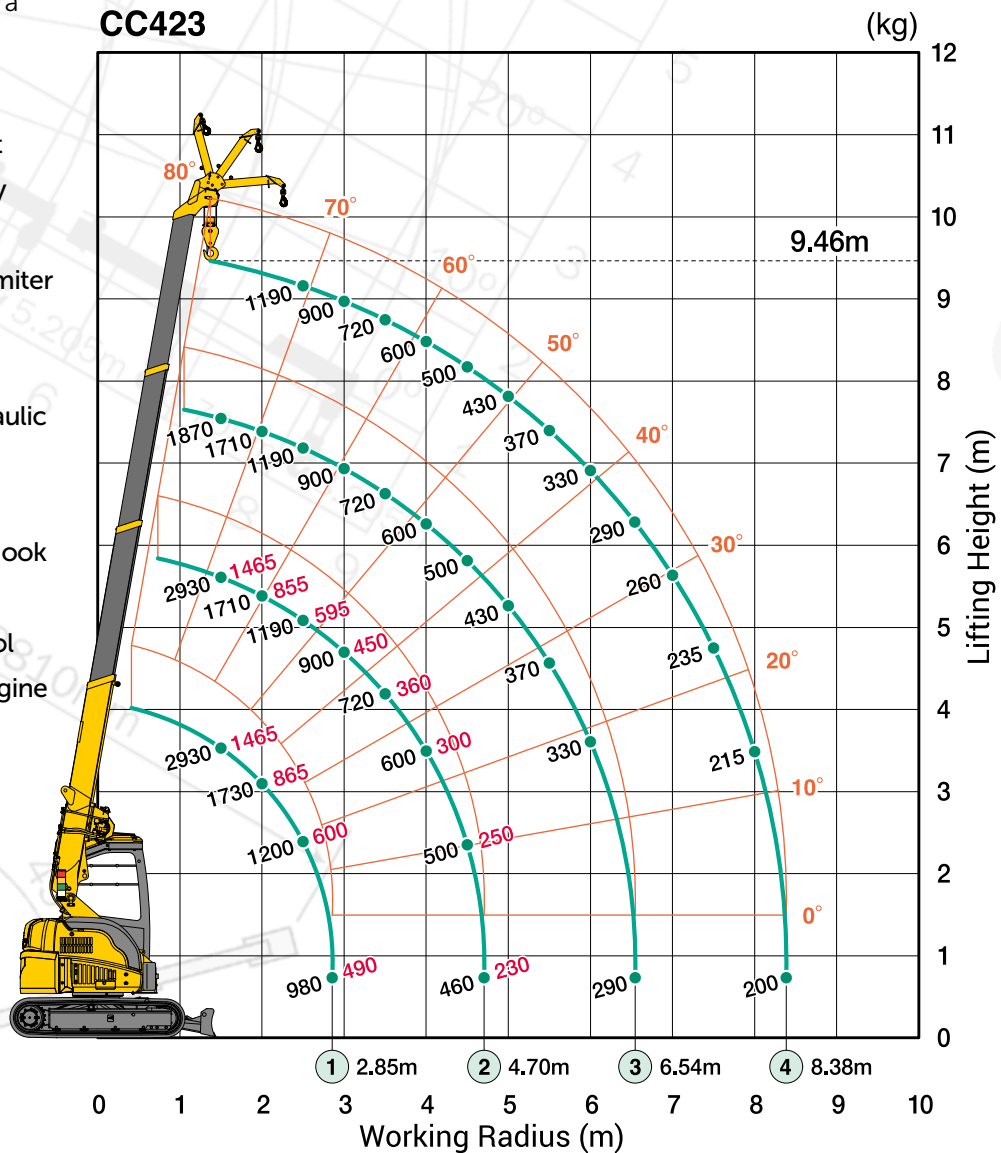
# CC423

The CC423 is the newest addition to the Crawler Crane range with a 2.93t capacity. The CC423 has primarily been developed for use in areas such as city centres where space is restricted, due to the highly compact tracked footprint with no need for outriggers and near zero-tailswing.

The major feature of this crane is the 1465kg Pick & Carry capacity. Other features include a new engine equivalent to EPA Tier 4 standard, an open but covered superstructure mounted operator's cab and a gross weight of 4400kg.



- 2.93 Ton Max Capacity
- 9.46m Max Working Height
- 1465kg Pick and Carry Duty
- Blade
- Programmable Moment Limiter
- 4 Fall / 2 Fall Hook Block
- Tilt Alarm
- Powerful Winch with Hydraulic Disc Brake
- Minimal Tail Swing
- Optional 850kg Searcher Hook
- Data Logger
- Pilot Pressure Travel Control
- Equivalent to EPA Tier 4 Engine
- New 7 inch Multi Monitor
- 2 Year Warranty



This working range chart shows total rated load including boom deflection.

... consider the possibilities

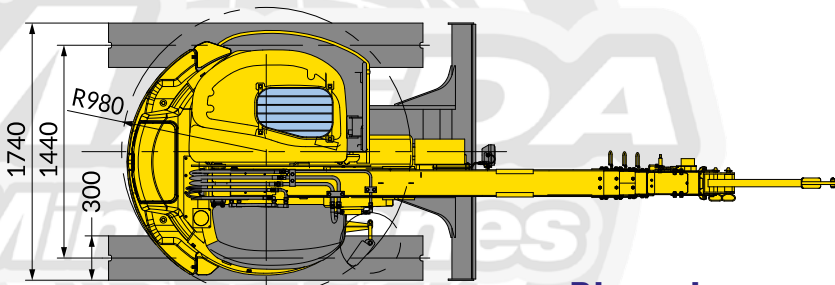


| Total rated load with 850kg Searcher Hook |            |            |            |            |
|---|------------|------------|------------|------------|
| Working radius (m)                        | 3.18m boom | 5.03m boom | 6.87m boom | 8.71m boom |
| 1.50                                      | 850        | 850        | 850        | 850        |
| 2.00                                      | 850        | 850        | 850        | 850        |
| 2.50                                      | 850        | 850        | 850        | 850        |
| 3.00                                      | 850        | 850        | 850        | 850        |
| 3.50                                      | 850        | 800        | 800        | 800        |
| 3.83                                      | 850        | 675        | 675        | 675        |
| 4.00                                      |            | 625        | 625        | 620        |
| 4.50                                      |            | 510        | 505        | 505        |
| 5.00                                      |            | 430        | 425        | 420        |
| 5.50                                      |            | 370        | 365        | 360        |
| 5.68                                      |            | 350        | 345        | 340        |
| 6.00                                      |            |            | 315        | 310        |
| 6.50                                      |            |            | 275        | 270        |
| 7.00                                      |            |            | 245        | 240        |
| 7.50                                      |            |            | 220        | 215        |
| 7.52                                      |            |            | 220        | 215        |
| 8.00                                      |            |            |            | 195        |
| 8.50                                      |            |            |            | 175        |
| 9.00                                      |            |            |            | 160        |
| 9.36                                      |            |            |            | 150        |

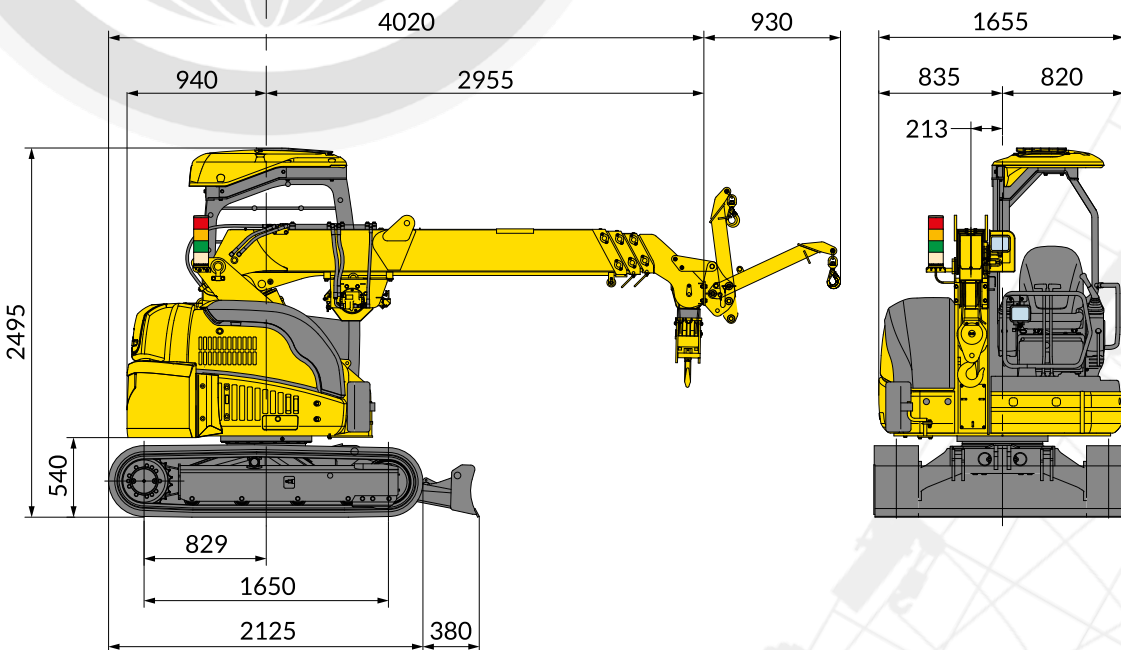
| Total rated load   |                       |                    |                       |                    |                       |                    |                       |
|--------------------|-----------------------|--------------------|-----------------------|--------------------|-----------------------|--------------------|-----------------------|
| 3.18m boom         |                       | 5.03m boom         |                       | 6.87m boom         |                       | 8.71m boom         |                       |
| Working radius (m) | Total rated load (kg) | Working radius (m) | Total rated load (kg) | Working radius (m) | Total rated load (kg) | Working radius (m) | Total rated load (kg) |
| 1.5                | 2930                  | 1.5                | 2930                  | 1.5                | 1870                  | 1.5                | 1190                  |
| 2.0                | 1730                  | 2.0                | 1710                  | 2.0                | 1710                  | 2.0                | 1190                  |
| 2.5                | 1200                  | 2.5                | 1190                  | 2.5                | 1190                  | 2.5                | 1190                  |
| 2.85               | 980                   | 2.85               | 980                   | 2.85               | 980                   | 2.85               | 980                   |
|                    |                       | 3.0                | 900                   | 3.0                | 900                   | 3.0                | 900                   |
|                    |                       | 3.5                | 720                   | 3.5                | 720                   | 3.5                | 720                   |
|                    |                       | 4.0                | 600                   | 4.0                | 600                   | 4.0                | 600                   |
|                    |                       | 4.5                | 500                   | 4.5                | 500                   | 4.5                | 500                   |
|                    |                       | 4.7                | 460                   | 4.7                | 460                   | 4.7                | 460                   |
|                    |                       |                    |                       | 5.0                | 430                   | 5.0                | 430                   |
|                    |                       |                    |                       | 5.5                | 370                   | 5.5                | 370                   |
|                    |                       |                    |                       | 6.0                | 330                   | 6.0                | 330                   |
|                    |                       |                    |                       | 6.5                | 290                   | 6.54               | 290                   |
|                    |                       |                    |                       |                    |                       | 7.0                | 260                   |
|                    |                       |                    |                       |                    |                       | 7.5                | 235                   |
|                    |                       |                    |                       |                    |                       | 8.0                | 215                   |
|                    |                       |                    |                       |                    |                       | 8.38               | 200                   |

- The Total Rated Load Charts are based on the actual working radius including boom deflection. The weight of the hook (standard 4 fall - 30kg) must be included as part of the load shown in the Total Rated Load Charts.
- When using two fall or single fall hooks, use the appropriate four fall Total Rated Load Chart but with a maximum load of: Two Fall - 1480kg, Single Fall - 750kg.

| Pick & Carry Duties |                       |                    |                       |
|---------------------|-----------------------|--------------------|-----------------------|
| 3.18m boom          |                       | 5.03m boom         |                       |
| Working radius (m)  | Total rated load (kg) | Working radius (m) | Total rated load (kg) |
| 1.5                 | 1465                  | 1.5                | 1465                  |
| 2.0                 | 865                   | 2.0                | 855                   |
| 2.5                 | 600                   | 2.5                | 595                   |
| 2.85                | 490                   | 2.85               | 490                   |
|                     |                       | 3.0                | 450                   |
|                     |                       | 3.5                | 360                   |
|                     |                       | 4.0                | 300                   |
|                     |                       | 4.5                | 250                   |
|                     |                       | 4.7                | 230                   |



### Dimensions



# CC423

## Specifications

|                            |   |  |
|----------------------------|---|--|
| Capacity<br>Pick and carry | Maximum   | 2.93t x 1.5m<br>1465kg   |
| Working radius             | Maximum   | 8.38m x 200kg  |
| Lifting height             | Maximum   | 9.46m x 1190kg   |
| Dimensions                 | CC423   | 4020mm x 1740mm x 2495mm   |
| Weight                     | CC423<br>Hook block weight  | 4400kg<br>30kg   |
| Hook speed                 | Maximum   | 19m / min. (4 falls, 4th layer)  |
| Single line speed          | Maximum   | 76m / min. (4th layer)   |
| Hoist wire rope            | Type  | IWRC 6xWs (26) Ø 8mm x 73m   |
| Telescopic system          | Boom length<br>Telescoping speed<br>Boom type   | 3.18 m - 8.71 m<br>5.53 m / 14 sec<br>Fully automatic 4 section pentagonal telescopic boom   |
| Boom hoist system          | Hoist angle / speed   | 0° to 80° / 12 sec   |
| Slew system                | Slew angle / speed  | 360° continuous / 2.4 rpm  |
| Drive                      | Type  | Independent steering controls, hydraulic piston motor with built in automatic brake, planet reduction gears, sprocket and crawler. |
| Traction speed             | Low<br>High<br>Gradability<br>Ground length x width<br>Ground pressure  | 2.9 km/h<br>4.6 km/h<br>20°<br>1650mm x 300mm<br>0.44 kgf / cm <sup>2</sup>  |
| Engine                     | Model<br>Type<br>Rated output<br>Fuel tank capacity   | Yanmar 3TNV88F-EPMBA<br>3 cylinder diesel water cooled direct injection<br>17.5 kW / 2,400 rpm<br>Diesel/42L                       |
| Safe load indicator        | Made specifically for Maeda Mini Cranes with a fully programmable working envelope  |  |
| Standard equipment         | Overwind protection, wire rope latch, steel tracks, hydraulic safety valve, level, safety lock lever, tilt alarm, EMO switch, moment limiter, working status lamp, data logger, 4-fall / 2-fall hook block, blade |  |
| Optional equipment         | Single fall hook<br>Rubber pads (black or white) weight 90kg<br>850kg searcher hook   |  |

