

Fiche technique :

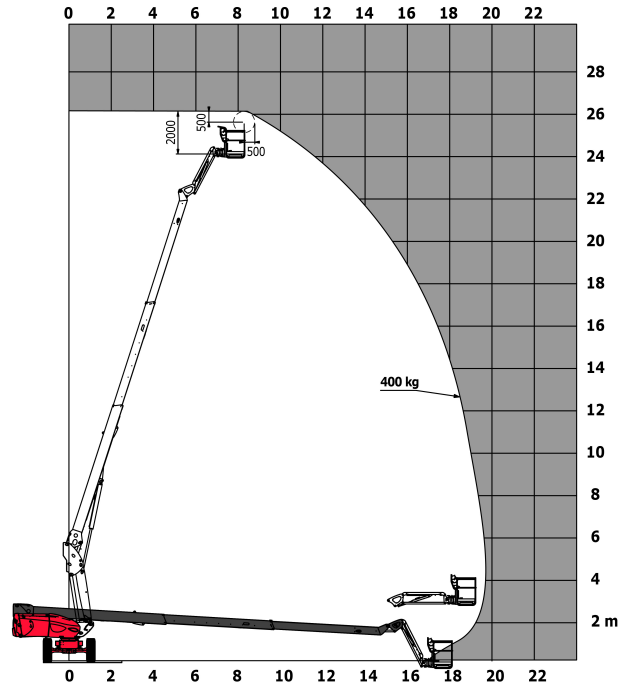
TJ 80+



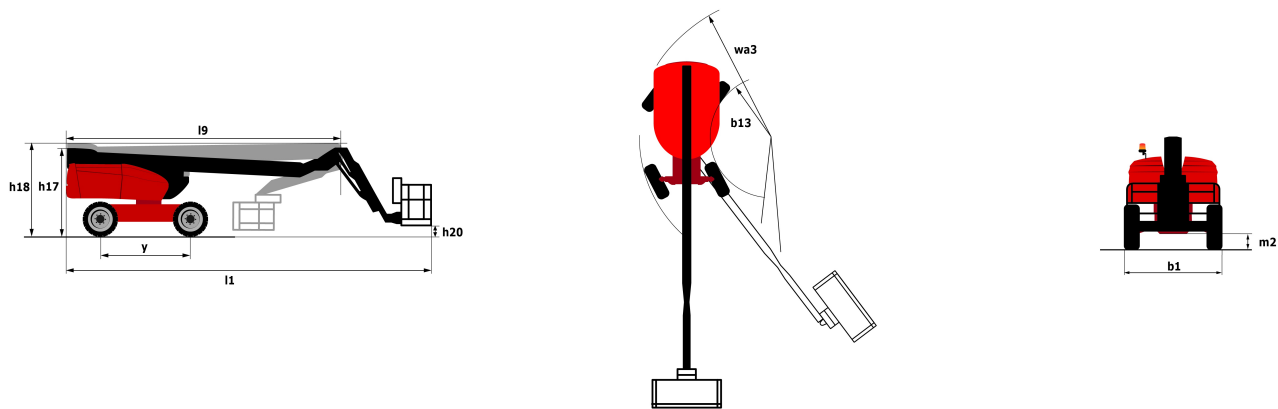
| Capacities | | Métrique | Impérial |
|--|---------|--|--|
| Working height | h21 | 25.72 m | 84 ft 5 in |
| Platform height* | h7 | 23.89 m | 78 ft 5 in |
| Max. outreach | l4 | 19.7 m | 64 ft 8 in |
| Pendular arm rotation (bottom) | | -63 ° | -63 ° |
| Platform capacity | Q | 408 kg | 899 lbs |
| Turret rotation | | 360 ° | 360 ° |
| Platform rotation (right / left) | | 90 ° / 90 ° | 90 ° / 90 ° |
| Number of people (inside / outside) | | 3 / 3 | 3 / 3 |
| Weight and dimensions | | | |
| Platform weight* | | 16305 kg | 35946 lbs |
| Platform dimensions (length x width) | lp / ep | 2.3 m x 0.9 m | 7 ft 7 in x 2 ft 11 in |
| Overall width | b1 | 2.48 m | 8 ft 2 in |
| Overall length | l1 | 10.84 m | 35 ft 7 in |
| Overall height | h17 | 2.71 m | 8 ft 11 in |
| Overall length (stowed) | l9 | 7.88 m | 25 ft 10 in |
| Overall height (stowed) | h18 | 2.8 m | 9 ft 2 in |
| Floor height (access) | h20 | 0.4 m | 1 ft 4 in |
| Jib length | l13 | 2.4 m | 7 ft 10 in |
| Counterweight offset (turret at 90°) | a7 | 1.43 m | 4 ft 8 in |
| Internal turning radius (over tyres) | b13 | 1.97 m | 6 ft 6 in |
| Outer turning radius | Wa3 | 4.35 m | 14 ft 3 in |
| Ground clearance at centre of wheelbase | m2 | 0.41 m | 1 ft 4 in |
| Wheelbase | y | 2.8 mm | 0.11 in |
| Performances | | | |
| Drive speed - stowed | | 4.7 km/h | 2.9 mph |
| Drive speed - raised | | 0.8 km/h | 0.5 mph |
| Gradeability | | 40 % | 40 % |
| Permissible leveling | | 4 ° | 4 ° |
| Wheels | | | |
| Tyres type | | Solid Tyres Cured-On | Solid Tyres Cured-On |
| Dimensions of front wheels / rear wheels | | 1,02 x 0,36 - 1,02 x 0,36 | 1,02 x 0,36 - 1,02 x 0,36 |
| Drive wheels (front / rear) | | 2 / 2 | 2 / 2 |
| Steering wheels (front / rear) | | 2 / 2 | 2 / 2 |
| Braking wheels (front / rear) | | 2 / 2 | 2 / 2 |
| Engine | | | |
| Engine brand / model / norm | | Kubota - D1803-CR-TIE4B - Stage V | Kubota - D1803-CR-TIE4B - Stage V |
| I.C. Engine power rating / Power (kW) | | 49.6 Hp / 37 kW | 49.6 Hp / 37 kW |
| Miscellaneous | | | |
| Ground Pressure | | 21.3 daN/cm ² | 21.3 daN/cm ² |
| Hydraulic Pressure | | 400 Bar | 28 PSI |
| Hydraulic tank capacity | | 94 l | 20.68 gal |
| Fuel tank | | 72 l | 15.84 gal |
| Vibration on hands/arms | | 0.5 Nm | 1.64 ft/s |
| Standards compliance | | | |
| This machine is in compliance with: | | European directives: 2006/42/EC- Machinery (revised EN280:2013) - 2004/108/EC (EMC) - 2006/95/EC (Low voltage) | European directives: 2006/42/EC- Machinery (revised EN280:2013) - 2004/108/EC (EMC) - 2006/95/EC (Low voltage) |

Abaques

Load Chart for AWP Metric



Schémas d'encombrement



Équipements

Standard

- 4 wheel drive
- 4 wheel steer with crab mode
- Active oscillating front axle
- Audible alarm and illuminated indicator lamp (leveling, overload, lowering)
- Backup electrical pump
- CAN bus technology
- Continuous turret rotation
- Differential locking on rear axle
- Electronic platform compensation
- Emergency stop button in platform and on frame
- Engine mounted on sliding platform
- Fuel gauge with low level indicator
- Hour meter
- Integrated diagnostic assistance
- Large basket with three entries
- Lift and drive
- Operator presence pedal
- Rear axle with limited slip differential
- Water heater

Optionnel

- Additional storage boxes
- Air predisposition
- Beep on every movement
- Beep upon travel
- Catalytic cleaner
- Coded anti-start
- Combination Radiator & Hydraulic Oil Cooler
- Extreme cold diesel fuel
- Extreme cold oil
- Key lock on fuel tank
- Non-marking tyres
- SMS : Safe Man System

Optionnel

Turret cover with key lock

Welder ready package

Working light



Siège Social

430 rue de l'Aubinière - 44150 Ancenis Cedex - France

Tel: +33(0)2 40 09 10 11 - Fax: +33 (0)2 40 09 10 97

www.manitou.com



Cette publication présente le descriptif des versions et possibilités de configuration des produits Manitou qui peuvent différer en équipement. Les équipements présentés dans cette brochure peuvent être de série, en option, ou non disponibles suivant les versions. Manitou se réserve le droit, à tout moment et sans préavis, de modifier les spécifications décrites et représentées. Les spécifications portées n'engagent pas le constructeur. Pour plus de détails, contactez votre concessionnaire Manitou. Document non contractuel. Présentation des produits non contractuelle. List des spécifications non exhaustive. Les logos ainsi que l'identité visuelle de l'entreprise sont la propriété de Manitou et ne peuvent être utilisés sans autorisation. Tous droits réservés. Les photos et schémas contenus dans la présente brochure ne sont fournis qu'à des fins de consultation et à titre indicatif.

MANITOU BF SA - Société anonyme à conseil d'administration - Capital social : 39 547 824 euros - 857 802 508 RCS Nantes