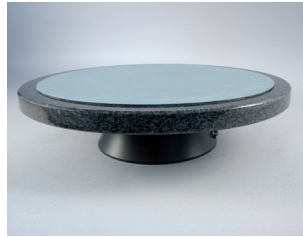


### Tilting Tables



043-631001/002



043-631005



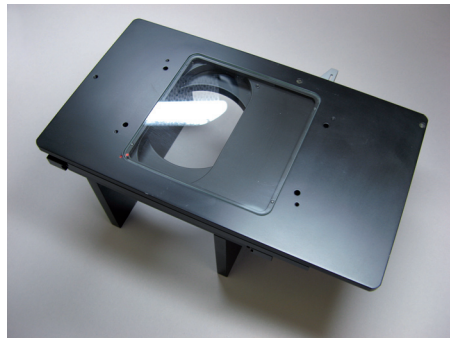
043-631003/006

Rotating Tilting Tables are designed for control and inspection work. In combination with a stereo microscope they form an ergonomic repair station. Using this table it is possible to rotate a sample effortlessly through 360° and tilt it up to a maximum of 30°. It is also deliverable with a 400 mm diameter stone plate.

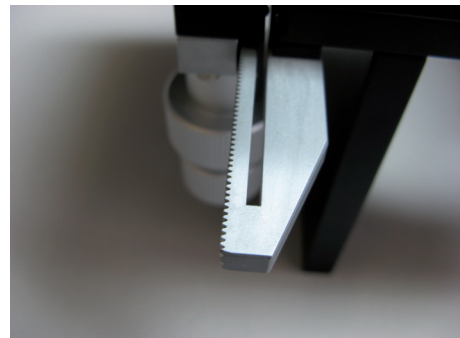
The metal versions are equipped with magnetic fixations to place and fasten PCB boards as well as ergonomic hand rests. Fixation is realised through a vacuum pump controlled by a foot switch which allows secure fixation in every desired position.

Order Number	Plate Diameter [mm]	Plate Surface	Approx. Weight [kg]
043-631001	150	Rubber	1.0
043-631002	200	Rubber	1.5
043-631005	400	Stone / Rubber	4.0
043-631006	300	Metal	6.0
043-631004	400	Metal	6.5
043-631003	450	Metal	7.0

### Manual Stages



Picture shows optional glass plate!



Detail

The Manual Stages have high-precision cross-roller-bearings. All stages, except for MIS 100, are equipped with patented coarse adjustment to allow for rapid movement, as well as very accurate positioning. There is a metal plate fixed to the top plate of these stages.

Order Number	Travel Range [mm]	Load Capacity [kg]	Weight [kg]
100-MIS100	102 x 102	5.0	1.6
100-MIS150	153 x 153	5.0	3.0
100-MIS200	205 x 205	5.0	7.4
100-MIS300	300 x 300	5.0	10.2