

The Fastest Gear Deburring

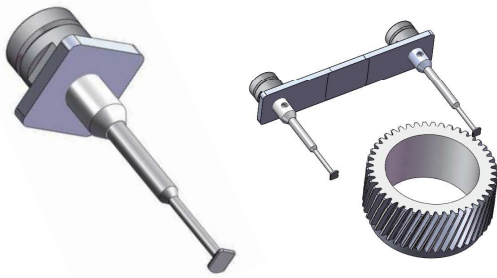
RBR-D5S H100

3D Angle Method Technology

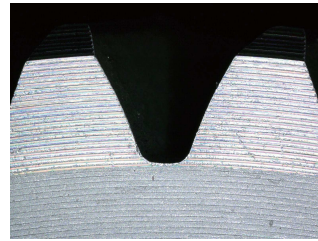


◆ Features

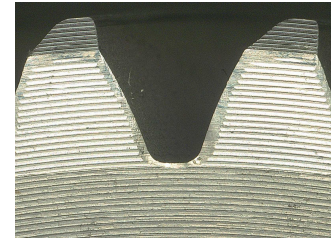
Unique development scraper and floating to follow gear shape instantly



before

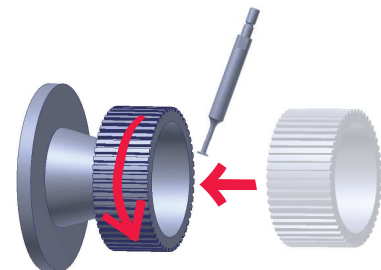


after



C0.2 cut / module 1.2

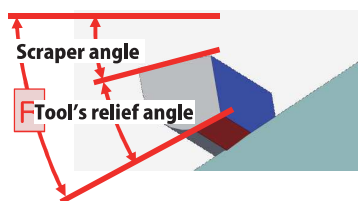
- ⇒ Easy Chucking
- ⇒ Positioning is unnecessary
- ⇒ Deburr Speed 50 teeth/sec
- ⇒ Module: 0.2 ~ 6.0
- ⇒ Work size: max $\Phi 100\text{mm}$
(Over $\Phi 100\text{mm}$ work size is separately consultation)
- ⇒ Body Size: 1100mm X 2000mm X 1800mm
- ⇒ Weight: 1000kg



Target work:



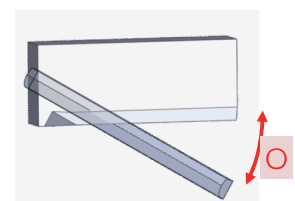
◆ KREUZ Scraping Theory (3D Angle Method)



Relief angle



Blade angle



Offset angle