



personal
EXTRACTION

Now, you can optimize your personal workflow. Promega instruments and reagents integrate easily.

Maxwell[®] 16
brings Personal Automation™ to the Clinical Lab.



Maxwell

MAXWELL® 16 AUTOMATED NUCLEIC ACID EXTRACTION SYSTEM

BETTER WORKFLOW

The Maxwell® 16 System makes nucleic acid extraction fast and simple. It allows you to extract DNA from up to 16 samples in 30 to 40 minutes. Automating your nucleic acid extraction decreases hands-on bench time spent manually extracting and reduces pipetting errors and repetitive motion injuries. The Maxwell® 16 System speeds front-end processing, enabling you to do more molecular tests without adding personnel. It's personal automation that works for you - so you can process more samples in less time.

NO DETECTABLE CROSS-CONTAMINATION

The robust system design avoids common problems associated with other automated extraction systems, such as clogged tips and partial reagent transfers. In addition, the UV light aids in system cleaning and removal of potential contamination. Most importantly, there is no detectable cross-contamination between samples - no splashing, no aerosols and no drips from pipette tips.

BETTER SET-UP AND OPERATION

The Maxwell® 16 System provides everything you need for extraction, including pre-filled reagent cartridges, specialized disposable plastics and easy-to-understand instructions. No separate computers or specialized training are required. With the bar-code reader and Sample Track software, track your workflow from patient to extracted sample. And, the instrument is compact so it can fit into virtually any lab. You get reproducible yields at the push of a button from every operator and from every sample.

CONSISTENT HIGH YIELD

The Maxwell® 16 System uses a paramagnetic-particle handling system that processes samples using Maxwell® reagent kits, providing consistent yield and purity. It automatically extracts DNA cleanly and consistently, giving you optimal samples for downstream applications. The Maxwell® 16 System provides high yield that allows you to run multiplex Polymerase Chain Reaction (PCR), Sequence Specific Primers (SSP), Sequence Based Typing (SBT) or other reactions and still have sufficient DNA available for re-test or archiving. You no longer have to worry whether additional samples will be available.

INSTRUMENT FEATURES

FAST EXTRACTION

The Maxwell® 16 extracts samples in 30 - 40 minutes allowing you to focus on performing downstream applications.

SAMPLE SIZE

With two instrument formats, work with large or small samples: Standard Elution Volume (SEV) 300-400 µl or Low Elution Volume (LEV) 50-100 µl.

PARTICLE PROCESSOR

The Maxwell® 16 is a particle processor... not a liquid handler, so there are no clogs and no drips. Just consistent yield and purity with no human error. The unique design offers mixing, capture of paramagnetic particles, binding, then extraction through a series of capture and release washes.

TRUSTED RESULTS

The Maxwell® 16 instrument is proven with a variety of sample types, including human blood and buffy coat, as well as a wide range of downstream applications.



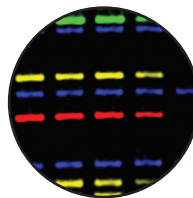
PURIFY FROM ALMOST ANYTHING

Change applications simply by changing cartridges that are readily available from Promega.

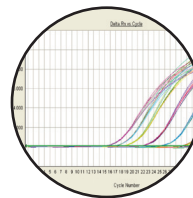
GROWING LIST OF PURIFICATION KITS

- Maxwell® 16 Blood DNA Purification Kit
- Maxwell® 16 Cell DNA Purification Kit
- Maxwell® 16 Tissue DNA Purification Kit
- Maxwell® 16 Total RNA Purification Kit
- Maxwell® 16 Tissue LEV Total RNA Purification Kit
- Maxwell® 16 Cell LEV Total RNA Purification Kit
- Maxwell® 16 Viral Total Nucleic Acid Purification Kit
- Maxwell® 16 LEV Blood DNA Kit
- Maxwell® 16 FFPE Tissue LEV DNA Purification Kit
- Maxwell® 16 Cell LEV DNA Purification Kit

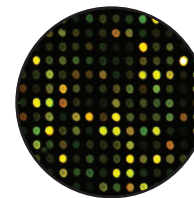
AUTOMATED EXTRACTION



gDNA



Total Nucleic Acid



Total RNA

INSTRUMENT SPECIFICATIONS

MAXWELL® 16 INSTRUMENT SPECIFICATIONS

| | |
|------------------------|---|
| Processing Time | 30 - 40 minutes (depending on sample type and method) |
| Number of Samples | Up to 16 |
| Standard Configuration | 300 µl elution volume |
| Weight | 41.7 lb (18.9 kg) |
| Dimensions | 12.8W x 17.3D x 12.9H inches (33W x 44D x 33H cm) |
| Power Requirements | 100 - 240VAC, 50-60Hz, 2.1A |
| Regulatory Compliance | General Purpose Medical Device (US Only) |

MAXWELL® 16 INSTRUMENT STANDARD COMPONENTS

| |
|--|
| 1 Maxwell® 16 Instrument |
| 1 Power Cable |
| 1 UV lamp bulb |
| 1 SD card |
| 1 SD card reader package (contains SD card reader and cable) |
| 1 CD containing the technical manual |
| 1 Quick Start Guide |
| 1 Bar Code Reader |
| 1 CD Containing Data Export Software |
| 1 RS-232 Cable for communication with a computer or printer |
| 1 RS-232/USB Adaptor for data export to computer |

ORDERING INFORMATION

| Product | Size | Cat # |
|--|----------|-----------|
| Maxwell® 16 Blood DNA Purification Kit ⁽¹⁾ | 48 preps | AS1010 |
| Maxwell® 16 Cell DNA Purification Kit ⁽¹⁾ | 48 preps | AS1020 |
| Maxwell® 16 Tissue DNA Purification Kit ⁽¹⁾ | 48 preps | AS1030 |
| Maxwell® 16 Total RNA Purification Kit ⁽¹⁾ | 48 preps | AS1050 |
| Maxwell® 16 Tissue LEV Total RNA Purification Kit ⁽¹⁾ | 48 preps | AS1220 |
| Maxwell® 16 Cell LEV Total RNA Purification Kit ⁽¹⁾ | 48 preps | AS1225 |
| Maxwell® 16 Viral Total Nucleic Acid Purification Kit ⁽¹⁾ | 48 preps | AS1150 |
| Maxwell® 16 LEV Blood DNA Kit ⁽¹⁾ | 48 preps | AS1290 |
| Maxwell® 16 FFPE Tissue LEV DNA Purification Kit ⁽¹⁾ | 48 preps | AS1130 |
| Maxwell® 16 Cell LEV DNA Purification Kit ⁽¹⁾ | 48 preps | AS1140 |
| Maxwell® 16 MDx Instrument LEV ⁽¹⁾ | each | AS3000-LC |
| Maxwell® 16 MDx Instrument SEV ⁽¹⁾ | each | AS3000-SC |

⁽¹⁾For Laboratory Use

Personal Automation is a trademark and Maxwell 16 is a registered trademark of Promega Corporation.

