



HT200H

The headspace autosampler

HT200H is an headspace autosampler made to meet the needs of static headspace injection for GC analysis

KEY FEATURES:

- **It can be easily installed on all the GC and GC/MS** because it's compact (no extra bench space required) and easy to use
- **No transfer line** means no carry over and no dead volume
- **Rotating head design leaves injection port free for manual injection**
- **Six position heated and shaken oven** to optimize preparation times
- **Extraordinary performance** with RSD up to <1%
- **Require low maintenance**



Do you need an all-in-one autosampler for headspace, liquid and SPME?

HT280T is the answer.

Contact us to have more details.

HTA - Sampling for science

www.hta-it.com

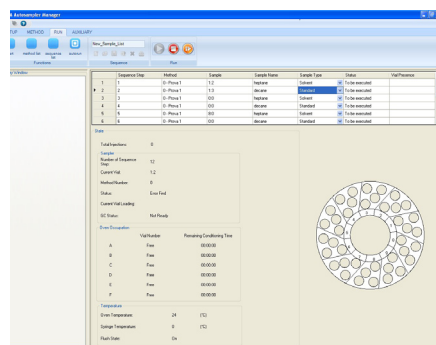
The elegant swivel head design mimics the actions of manual injection. This removes the need for transfer line and minimises dead volume and sample absorption.

For maximum productivity, **HT200H has a six position oven** that allows to optimize preparation times. The unit processes samples so that injection starts immediately after the previous run is completed.

The sample is heated and simultaneously shaken to facilitate the state change. The extraction is made inside the oven to assure the sample thermal stability also if the extraction times are long, avoiding sample condensation.

The unit can be configured in the right or left position, **it can use both the front and rear injector. The injector selection is made directly by the sequence list**, avoiding difficult set up operations or re-installation to pass from one injector to another one. **Rotating head design assures that the injection port is always free, for eventual manual injections.**

No magnetic or special caps are required because vial transport is positive and reliable.



HTA Autosampler Manager is the software dedicated to manage **HT200H** autosampler. The software may be run stand-alone or alongside other softwares such as GC control and integration packages. Through **HTA Autosampler Manager** it is possible to:

- ✓ run samples
- ✓ save execution reports
- ✓ print all data files
- ✓ edit methods
- ✓ back up data

HT200H Technical specifications

General characteristics

Tray capacity: 40 vials (10ml or 20ml)
 Syringe volume: 2.5 (standard), 5ml (optional)
 Cleaning system: Inert gas flush

Conditioning

Oven positions: 6
 Oven temperature: ambient; 40 - 150°C
 Conditioning time: 0 - 23h59min
 Progressive increase: 0 - 9h59min
 Shaking method: Orbital
 Shaker speed: 320 - 750rpm
 Shaker cycles: on/off 0 - 9.9min

Sampling

Syringe temperature: ambient; 40 - 150°C
 Sampling volume: steps of 0.01ml

Sample homogenization: up to 15
 Filling speed: 0.1 - 100ml/min

Injection

Injection speed: 0.1 - 100ml/min
 Pre/Post dwell time: 0 - 99sec
 Enrichment: up to 15
 Dwell time between injections: 0 - 99sec

Control

Electrical Control: RS232 and TTL

Physical characteristics

Dimensions (LxHxD): 420x620x400mm
 Weight: 11.5kg
 Power: 115V/230V - 50Hz/60Hz

HTA,
the
company

HTA is one of the leading Italian engineering and manufacturing company of scientific instruments. We are currently focused on applications and solutions for analytical, life science and clinical chemistry automation. Our specialization is in robotic systems for sample management; among our most popular products: GC and HPLC autosamplers, preparative workstations. In addition, HTA offers engineering consultancy services for its OEM customers. We operate in UNI EN ISO 9001:2008 Quality system

Distributed by:

HTA s.r.l.

via del Mella, 77-79 - 25131 Brescia - ITALY

T: +39 030 3582920 - F: +39 030 3582930

info@hta-it.com - <http://www.hta-it.com>