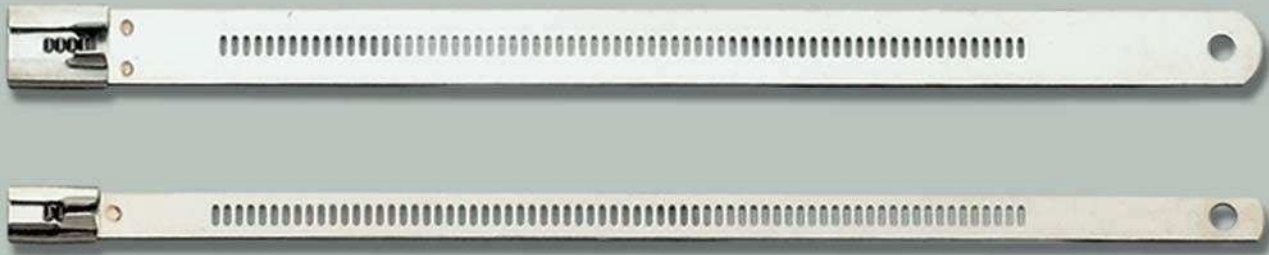
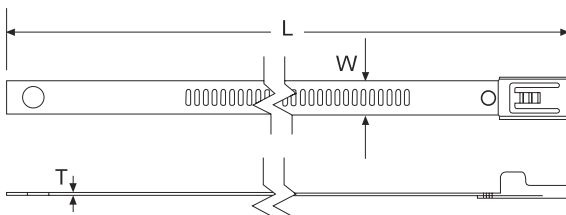



## Stainless Steel Tie - Ladder type

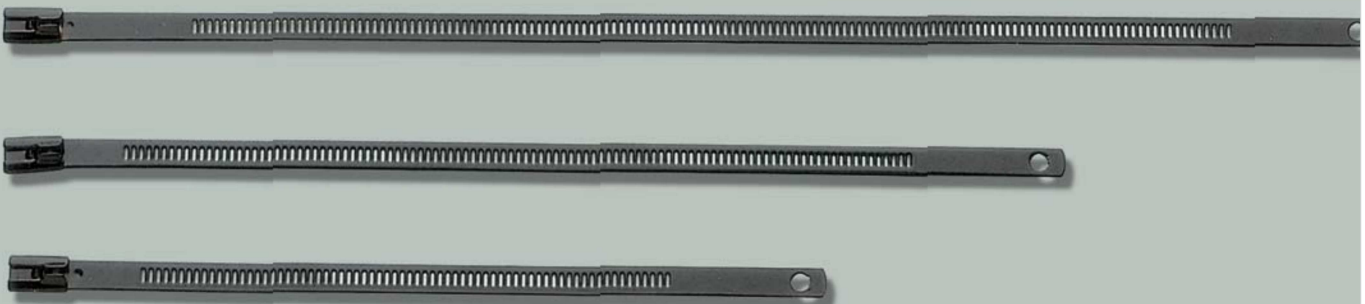


Material: Stainless Steel Uncoated  
Thickness = .010" (0.3mm)

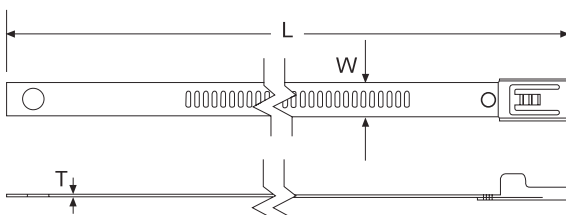



Part N°	Max Bundle Dia. mm	"L" Length mm	"W" Width mm	Min Loop Tens. Kg	
<b>STL-195S</b>	45	195	7	34.0	10
<b>STL-255S</b>	64	255	7	34.0	10
<b>STL-335S</b>	89	335	7	34.0	10
<b>STL-490S</b>	139	490	7	34.0	10
<b>STL-635S</b>	185	635	7	34.0	10
<b>STL-195M</b>	45	195	12	45.3	10
<b>STL-255M</b>	64	255	12	45.3	10
<b>STL-335M</b>	89	335	12	45.3	10
<b>STL-490M</b>	139	490	12	45.3	10
<b>STL-635M</b>	185	635	12	45.3	10

## Stainless Steel Tie - Ladder type with Nylon coating



Material: Stainless Steel Coated with Black Nylon 11  
Thickness = .010" (0.3mm)



Part N°	Max Bundle Dia. mm	"L" Length mm	"W" Width mm	Min Loop Tens. Kg	
<b>STLC-195S</b>	45	195	7	34.0	10
<b>STLC-255S</b>	64	255	7	34.0	10
<b>STLC-335S</b>	89	335	7	34.0	10
<b>STLC-490S</b>	139	490	7	34.0	10
<b>STLC-635S</b>	185	635	7	34.0	10
<b>STLC-195M</b>	45	195	12	45.3	10
<b>STLC-255M</b>	64	255	12	45.3	10
<b>STLC-335M</b>	89	335	12	45.3	10
<b>STLC-490M</b>	139	490	12	45.3	10
<b>STLC-635M</b>	185	635	12	45.3	10