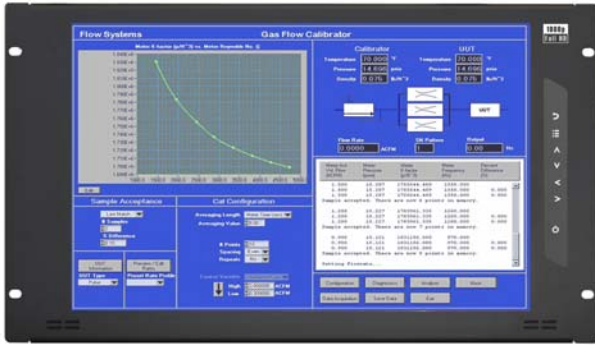


### RP-F617

1080p  
Full HD



### Display Features & Benefits

- ▶ 6U rackmount 17" widescreen LCD
- ▶ Support **Full HD** with 1080p resolution
- ▶ Green LED-backlit panel technology
- ▶ Ideal for CCTV security & industrial control

### Options

- 3G / HD / SD-SDI Broadcast-grade input ( w/ speaker )
- **MCS** Multi-display control solution
- F17" Touchscreen : Resistive
- S-Video + Composite ( BNC )
- HDMI or Audio input
- DC power : 12V / 24V / 48V / 110 ~ 125V
- MIL-type or lockable connector



- Basic I/O** : DVI-D + VGA  
**AV3.0 upgrade** : DVI-D + VGA + HDMI + BNC + S-Video + audio  
**Options** : SDI, USB for touchscreen & DC power

### Specifications

#### • LCD Panel

Size (diagonal) :	17.3" widescreen TFT
Max resolution :	1920 x 1080
Brightness (cd/m2) :	400
Backlight :	LED
Colors :	16.7 M, 8-bit
Contrast ratio (typ) :	600 : 1
Viewing angle (H/V) :	160° x 140°
Active area (mm) :	382 x 215
MTBF (hrs) :	50,000
Signal input :	VGA or DVI-D

#### • Weight

Net :	4.5 kgs / 9.9 lbs
Gross :	6 kgs / 13.2 lbs

#### • Environmental

Operating :	0 to 50°C Degree
Storage :	-5 to 60°C Degree
Relative humidity :	5~90%, non-condensing
Shock :	10G acceleration ( 11 ms duration )
Vibration :	5~500Hz 1G RMS random vibration

#### • Caseing Color :

Black ( RAL 9005 )

#### • Regulatory

Safety :	FCC & CE certified
Environmental :	RoHS2 & REACH compliant

#### • Power

Input :	Auto-sensing 100 to 240VAC, 50 / 60Hz
Consumption :	Max. 48 Watt, Standby 5 Watt

#### • Dimensions

Product :	480 x 48 x 266 mm / 18.9 x 1.9 x 10.5 inch
Packing :	529 x 124 x 451 mm / 20.8 x 4.9 x 17.8 inch

### Diagrams ( mm )

