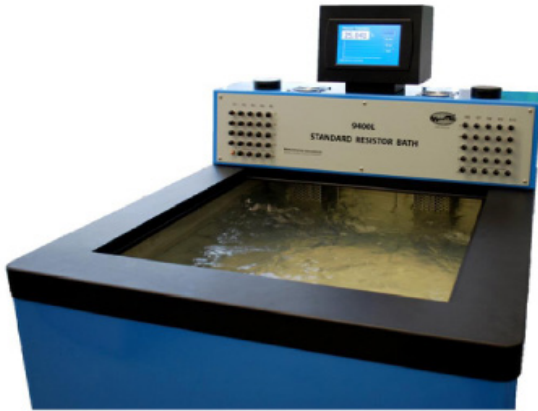


>185.65546 67816.122187 577
>198.65546 65612.23-2829 9555
>198.65546 65612.23-2829 9555
>152.698016 68818.28-2399 92356
>198.643636 78617.73-2289 783 56
>124.634546 78672.23-7779 683 56
>458.11142 83417.78-2397 876 56
>145.523286 64486.22-2689 986 56
>140.77060 32814.07-7060 328 56-20

MODEL 9400L



Show as optional
9400L-I Resistor Interconnect Panel

Standard Resistor Oil Bath

- Stability <10 mK
- Quiet Operation
- Large Working Area
- Temperature Band Protection
- Thermoelectrically Cooled
- Adjustable Stirring Speed

MODEL INFORMATION

Measurements International's series of fluid baths are used for the maintenance of Standard Resistors and Shunts. The 9400L has been designed after compiling years of customer feedback on existing resistor oil baths. The result is a stable, quiet oil bath that can be used with the CCC and QHR due to its low electrical noise and low operating and maintenance costs.

The 9400L does not use a compressor and as such is very quiet both audibly and electrically. The one piece stainless steel tank is grounded and isolated from the anodized resistor shelf. Stirring is provided by two adjustable speed motors. The tank lid is insulated and sits atop a resistor drain shelf. The access opening is 25" by 23" to accommodate easy access for handling larger resistors.

The touch screen interface displays temperature and gives the user access to the PID for adjustment of alarm settings and stirring

speed. The exclusive design uses a proprietary temperature Band protection circuit.

The Bath is equipped with two drain/fill ports. An optional pump system, Model 9400-P can be used to fill or drain the bath and includes a filtration system to filter debris from the tank.

There are two 2" vertical conduit ports for resistor cables and to minimize wicking. These

ports allow the tank lid to remain in place for increased temperature stability. For easy connections to resistors and shunts see the Model 9400-I interconnect Panel. For holding your standard resistors securely.



Specifications

Operating

Stability <10 mK
Temperature 25°C

Size

Tank Size 27"x 30"x 13" Dp.
Tank Opening 25"x 23"
Usable Tank Area 27"x 26"x 12" Dp.
Outside Dim 34"x 37"x 38" Tall

Fluid

Mineral Oil / Water 150 L / 40 Gal
Mass 100 Kg / 220 Lbs

Controller

Input 4W RTD
Control Heat/Cool
Control Loop PID

Safety

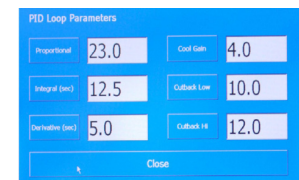
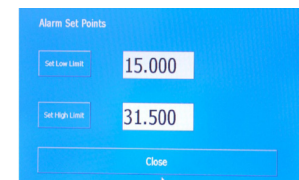
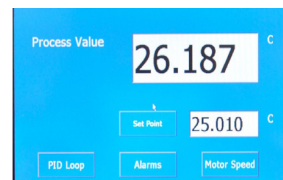
Level One Main Controller
Redundant high/low with sensor

Power

Voltage 120 V / 220 V - 50/60 Hz
Current 20 A / 15 A
Plug Configuration On Order

Accessories:

9400-P - Oil Filtration and Pump
9400L-I - Resistor Interconnect Panel



Distributed By:



www.acalime.com

TEL : 09.67.06.64.78

Email : acalime@acalime.com

Corporate Headquarters

Measurements International
PO Box 2359, 118 Commerce Drive
Prescott, Ontario, Canada K0E 1T0
Phone: (613) 925-5934
Fax: (613) 925-1195
Email: sales@mintl.com
Toll Free: 1-800-324-4988

Worldwide Offices

MI-USA

Phone: (407) 706-0328
Fax: (407) 706-0318
Email: sales@mintl.com
Toll Free: 1-866-684-6393

MI-China

Phone: 86-10-64459890
Fax: 86-10-64459871
Email: sales@mintl.com

MI-Europe

Phone: (420) 731-440-663
Fax: (420) 572-572-358
Email: sales@mintl.com



www.mintl.com