

LUFFING JIB TOWER CRANE












Specifications:

- ▶ Max jib length: 65,00 m
- ▶ Capacity at max length: 6,70 t
- ▶ Max capacity: 32,00 t

KEY

Legenda · Zeichenerklärung · Légende · Leyenda · Legenda · Условные обозначения

	Hoisting · Sollevamento · Heben · Levage · Elevación · Elevação · Подъем
	Slewing · Rotazione · Schwenken · Orientation · Orientació · Giro · Поворот
	Luffing · Brandeggio · Ausleger-Einziehen · Relevage · Elevación de pluma · Lança basculante · Наклон стрелы
	Travelling · Traslazione · Schienenfahren · Translation · Traslación · Móvel · Передвижение
	Directive on noise level · Direttiva sul livello acustico · Richtlinie für den Schall-Leistungspegel · Directive sur le niveau acoustique · Directiva sobre el nivel acustico · Directiva sobre nivel de ruidos · Директива по уровню шума
	Consult us · Consultateci · Auf Anfrage · Nous consulter · Consultarnos · Consulte-nos · Проконсультироваться с нами
	Power requirements · Potenza totale richiesta · Geforderte Stromstärke · Puissance totale nécessaire · Potencia necesaria · Requisitos de energia · Требования по питанию
	Power supply · Alimentazione · Stromversorgung · Alimentation · Alimentación · Fonte de alimentação · Питание
	In service · In servizio · In Betrieb · En service · En servicio · Em serviço · При работе
	Out of service · Fuori servizio · Außer Betrieb · Hors service · Fuera de servicio · Fora de serviço · В режиме простоя
	Max. under hook height · Altezza max. sotto gancio · Höchste Hakenhöhe · Hauteur maxi. sous crochet · Maxima altura bajo gancho · Alt. máx. sob o gancho · Макс высота крюка
	Jib · Braccio · Ausleger · Flèche · Pluma · Lança · Стрела
	Without load, without ballast, max. jib and max. height · A vuoto, senza zavorra, braccio max., altezza max. · Ohne Last und Ballast, mit Maximalausleger und Maximalhöhe · A vide, sans lest, avec flèche et hauteur maximum · Sin carga, sin lastre, con pluma y altura máxima · Sem carga, sem lastro, lança máxima, altura máxima · Без груза, без балласта, на макс. Длине вспомогательной стрелы и макс. Высоте
	Counterweight · Zavorra controbraccio · Gegengewicht · Lest de contre-flèche · Lastre de contra flecha · Contrapeso · Противовес
C25	EN 14439-C25 · EN 14439 - C25 · EN14439 - C25 · EN 14439 - C25 · EN 14439 - C25 · EN 14439 - C25 · EN14439 - C25

CONTENTS

CTL 630B-32

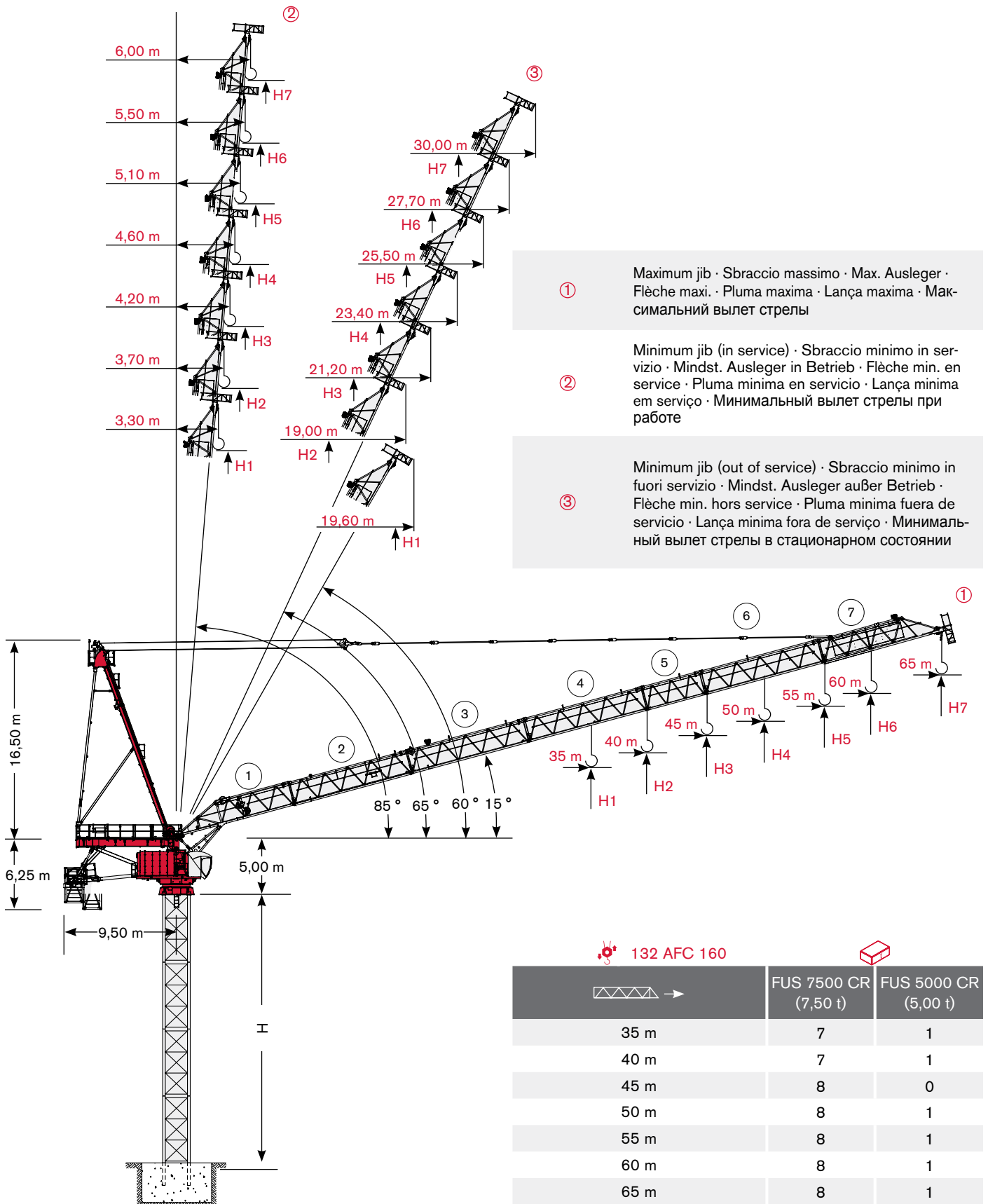
Indice · Inhalt · Contenu · Contenido · Sumário · Содержание

Page · Seite · Page · Página · Pagina · Página · Страница:

Load Diagram · Diagramma di portata · Lastkurven · Courbes de charges · Curvas de cargas · Diagrama de carga · Диаграмма грузоподъёмности	4
Tower · Torre · Turm · Tour · Torre · Torre · Башня	6
Mechanisms · Meccanismi · Antriebe · Mécanismes · Mecanismos · Mecanismo · Механизм	9
Transportation · Trasporto · Transport · Transport · Transporte · Transporte · Транспортировка	10

LOAD DIAGRAM

Diagramma di portata · Lastkurven · Courbes de charges · Curvas de cargas · Diagrama de carga · Диаграмма грузоподъёмности



Load Diagram · Diagramma di portata · Lastkurven · Courbes de charges · Curvas de cargas · Diagrama de carga · Схема нагрузок

				15 m	20 m	25 m	30 m	35 m	40 m	45 m	50 m	55 m	60 m	65 m
	16 t →	28,80 m	t	16,00	16,00	16,00	15,38	13,07	11,35	10,00	8,93	8,05	7,32	6,70
	16 t →	35,80 m	t	16,00	16,00	16,00	16,00	16,00	14,18	12,45	11,07	9,94	9,00	
	24 t →	24,50 m	t	24,00	24,00	23,50	19,36	16,40	14,18	12,45	11,07	9,94	9,00	
	16 t →	39,40 m	t	16,00	16,00	16,00	16,00	16,00	15,77	13,87	12,35	11,10		
	24 t →	27,00 m	t	24,00	24,00	24,00	21,48	18,22	15,77	13,87	12,35	11,10		
	16 t →	42,20 m	t	16,00	16,00	16,00	16,00	16,00	16,00	14,93	13,30			
	32 t →	21,90 m	t	32,00	32,00	27,96	23,08	19,58	16,97	14,93	13,30			
	16 t →	42,90 m	t	16,00	16,00	16,00	16,00	16,00	16,00	15,20				
	32 t →	22,30 m	t	32,00	32,00	28,45	23,48	19,93	17,27	15,20				
	16 t →	40,00 m	t	16,00	16,00	16,00	16,00	16,00	16,00					
	32 t →	22,80 m	t	32,00	32,00	29,14	24,05	20,42	17,70					
	16 t →	35,00 m	t	16,00	16,00	16,00	16,00	16,00						
	32 t →	23,20 m	t	32,00	32,00	29,66	24,49	20,80						

Load diagram not consider rope weight: $p = 2.6 \text{ Kg/m}$ · Diagramma di carico senza peso fune di sollevamento: $p = 2.6 \text{ kg/m}$ · Lastkurven beinhalten nicht das Eigengewicht des Hubseils: $p = 2,6 \text{ Kg/m}$ · La courbe de charge ne tient pas compte du poids du câble $p = 2,6 \text{ kg/m}$ · La tabla de cargas no incluye el peso del cable: $p = 2,6 \text{ kg/m}$ · Diagrama de carga não considera o peso da corda: $p = 2,6 \text{ kg / m}$ · Грузовысотная характеристика составлена без учета веса каната: $p = 2.6 \text{ кг/м}$

Jib and Tower Height Configurations · Configurazioni torre e braccio · Ausleger- und Turmkonfigurationen · Configurations de la flèche et du mât · Configuraciones de pluma y torre · Configuração de lança e altura de torre · Конфигурация башни и стрелы

35 m	1 + 2 + 5 + 7
40 m	1 + 2 + 3 + 7
45 m	1 + 2 + 3 + 5 + 7
50 m	1 + 2 + 3 + 4 + 7
55 m	1 + 2 + 3 + 4 + 5 + 7
60 m	1 + 2 + 3 + 4 + 6 + 7
65 m	1 + 2 + 3 + 4 + 5 + 6 + 7

	H		
	①	②	③
H1	H + 10,2 m	H + 32,6 m	H + 30,6 m
H2	H + 11,6 m	H + 37,7 m	H + 35,2 m
H3	H + 12,4 m	H + 42,9 m	H + 39,9 m
H4	H + 14,3 m	H + 48,0 m	H + 44,6 m
H5	H + 15,6 m	H + 53,2 m	H + 49,3 m
H6	H + 16,9 m	H + 58,4 m	H + 54,0 m
H7	H + 18,3 m	H + 63,5 m	H + 58,7 m

TOWER

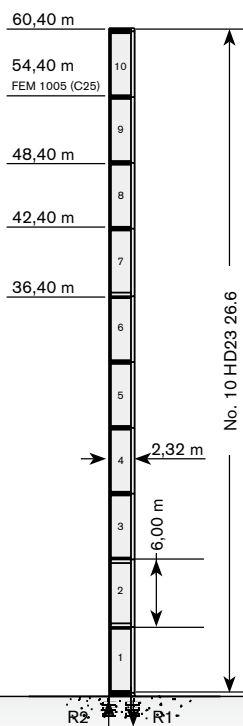
Torre · Turm · Tour · Torre · Torre · Башня

Standard Configurations · Installazioni Standard · Standardkonfiguration · Standard Implantations · Implantaciones Standard · Configuração padrão · Стандартная конфигурация крана

HD23

Tower: HD23 & Basement: R1

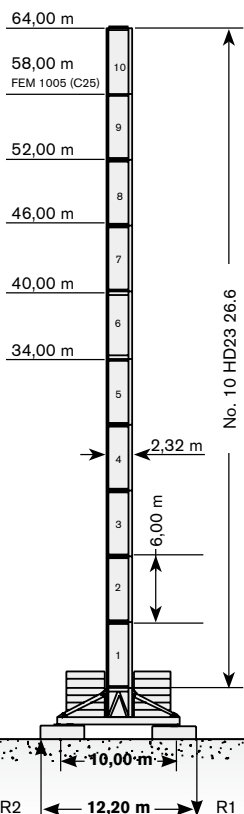
	●	◊
R1	-4930 kN	-5360 kN
R2	3600 kN	4360 kN
	1500 kN	



→	max. H (m)	
	FEM 1005 C25	FEM 1001
35 m	54,40	60,40
40 m	54,40	60,40
45 m	48,40	54,40
50 m	48,40	54,40
55 m	48,40	54,40
60 m	42,40	48,40
65 m	42,40	48,40

Tower: HD23 & Basement: FP1

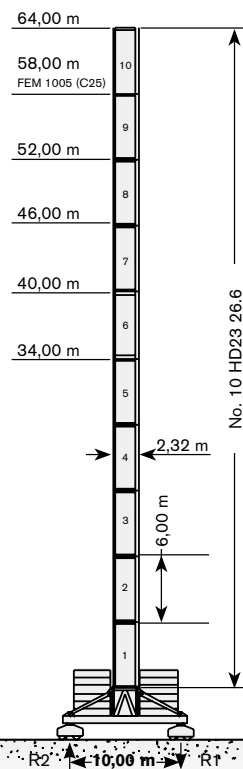
	●	◊
R1	-1890 kN	-2090 kN
R2	-280 kN	0 kN
	1809 kN	



→	max. H (m)	
	FEM 1005 C25	FEM 1001
35 m	58,00	64,00
40 m	52,00	58,00
45 m	52,00	58,00
50 m	52,00	58,00
55 m	46,00	52,00
60 m	46,00	52,00
65 m	46,00	46,00

Tower: HD23 & Basement: T1


	●	◊
R1	-2110 kN	-2090 kN
R2	-150 kN	0 kN
	1929 kN	

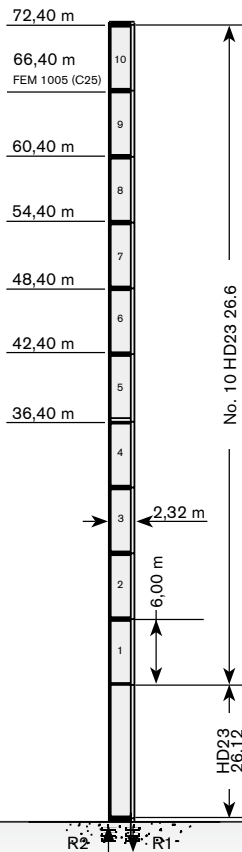


→	max. H (m)	
	FEM 1005 C25	FEM 1001
35 m	58,00	64,00
40 m	52,00	58,00
45 m	52,00	58,00
50 m	52,00	58,00
55 m	46,00	52,00
60 m	46,00	52,00
65 m	46,00	46,00

Tower height · Altezza torre · Turmhohe · Hauteur mat · Altura torre · Altura torre · Высота башни


Tower: HD23 & Basement: R2

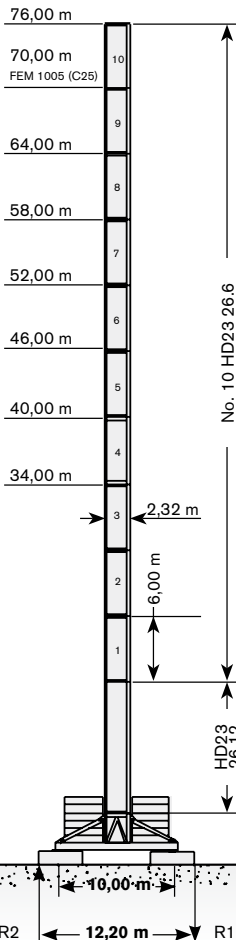
	●	◊
R1	-5600 kN	-7140 kN
R2	4160 kN	6010 kN
	1650 kN	



→	max. H (m)	
	FEM 1005 C25	FEM 1001
35 m	66,40	72,40
40 m	66,40	72,40
45 m	60,40	66,40
50 m	60,40	66,40
55 m	60,40	66,40
60 m	54,40	60,40
65 m	54,40	60,40


Tower: HD23 & Basement: FP2

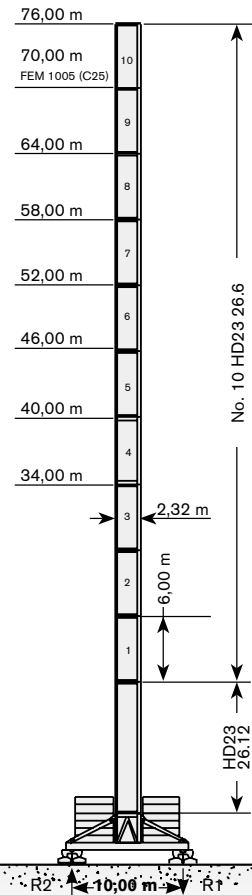
	●	◊
R1	-2190 kN	-2780 kN
R2	-390 kN	0 kN
	1959 kN	



→	max. H (m)	
	FEM 1005 C25	FEM 1001
35 m	70,00	76,00
40 m	64,00	70,00
45 m	64,00	70,00
50 m	64,00	70,00
55 m	58,00	64,00
60 m	58,00	64,00
65 m	58,00	58,00

Tower: HD23 & Basement: T2

	●	◊
R1	-2450 kN	-2780 kN
R2	-390 kN	0 kN
	2079 kN	



→	max. H (m)	
	FEM 1005 C25	FEM 1001
35 m	70,00	76,00
40 m	64,00	70,00
45 m	64,00	70,00
50 m	64,00	70,00
55 m	58,00	64,00
60 m	58,00	64,00
65 m	58,00	58,00

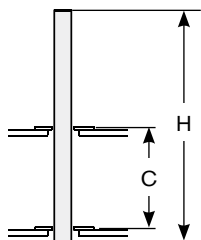
Different heights and tower combinations are available; please consult us · Altezze diverse e combinazioni di torre sono disponibili; consultateci · Andere Höhen und Turmkombinationen auf Anfrage · Différentes hauteurs et combinaisons de tour sont disponibles; nous consulter · Hay diferentes alturas y combinaciones de torre disponibles. Consúltenos · Diferentes alturas e combinações de torres disponíveis; fale conosco · Возможны другие сочетания высоты и конфигурации башни; проконсультируйтесь с нами

TOWER

Torre · Turm · Tour · Torre · Torre · Башня

Other configurations · Altre Installazioni · Aufstellmöglichkeiten · Autres Implantations · Otras Implantaciones · Outras configurações · Другие конфигурации

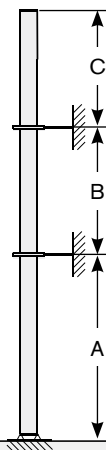
Bottom climbing crane · Gru climbing · Kletterkran im Gebäude · Télescopage sur dalles · Telescopage grúa trepadora · Guindaste automontante interno · Самоподъемный кран



Tower: HD23-26 CL

	C	H max
35 m	14,00m	48,00m
	16,00m	48,00m
	18,00m	48,00m
	21,00m	48,00m
40 m	14,00m	48,00m
	16,00m	48,00m
	18,00m	48,00m
45 m	14,00m	42,00m
	16,00m	42,00m
	18,00m	42,00m
	21,00m	42,00m
50 m	14,00m	36,00m
	16,00m	36,00m
	18,00m	36,00m
	21,00m	36,00m
55 m	14,00m	36,00m
	16,00m	36,00m
	18,00m	36,00m
	21,00m	36,00m
60 m	14,00m	36,00m
	16,00m	36,00m
	18,00m	36,00m
	21,00m	36,00m
65 m	14,00m	36,00m
	16,00m	36,00m
	18,00m	36,00m
	21,00m	36,00m

Crane tied to the structure · Gru ancorata · Geankerter Kran · Grue ancrée · Grúa anclada · Guindaste ancorado na estrutura · Кран, крепящийся к сооружению



Tower: HD23 R





	A min/max	B min/max	C max
35 m	36m / 48m	24m / 30m	36,00m
40 m	36m / 48m	24m / 30m	36,00m
45 m	36m / 42m	24m / 30m	30,00m
50 m	36m / 42m	24m / 30m	30,00m
55 m	36m / 42m	24m / 30m	30,00m
60 m	36m / 36m	24m / 30m	24,00m
65 m	36m / 36m	24m / 30m	24,00m

MECHANISMS

CTL 630B-32



Meccanismi · Antriebe · Mécanismes · Mecanismos · Mecanismo · Механизм

Power supply · Alimentazione · Stromversorgung · Alimentation · Suministro eléctrico · Requisitos de energia · Требования по питанию

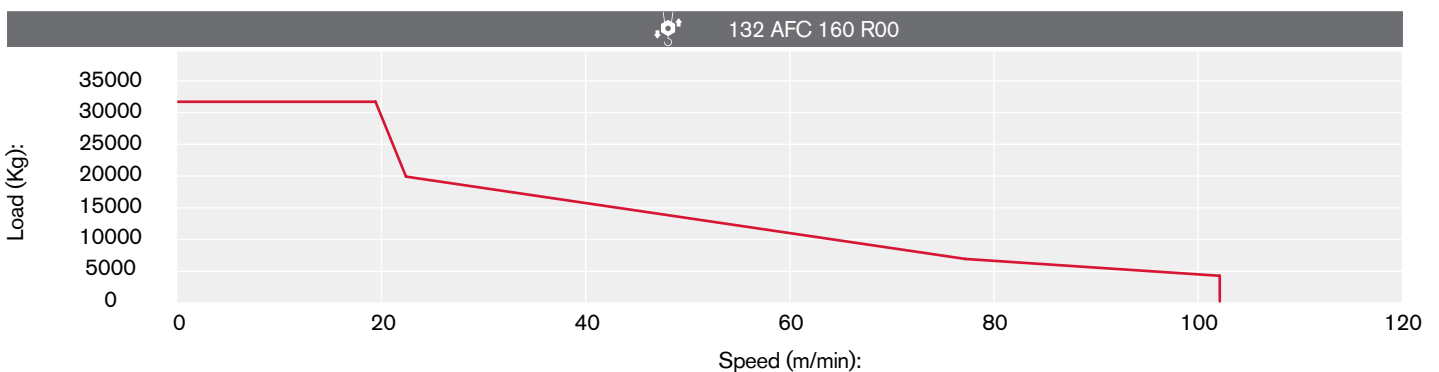
	132 AFC 160		311 kVA*		400V - 50Hz / 460V - 60Hz		2000/14/CE modificata
---	-------------	---	----------	---	---------------------------	---	-----------------------

* Average consumption · Consumo medio · Durchschnittsverbrauch · Consommation moyenne · Consumo medio · Consumo médio · Среднее потребление




Hoisting · Sollevamento · Heben · Levage · Elevación · Elevação · Подъем (50Hz)

			t	m/min	kW	
	132 AFC 160 R00 132 AFC 160 R01 (Vector)		16	0 → 38	132	990 m
			10	0 → 44		
			3,4	0 → 154		
			2,05	0 → 202		
			32	0 → 19		
			20	0 → 22		
			6,8	0 → 77		
			4,1	0 → 102		

Hoisting Speed · Velocità di Sollevamento · Heben Geschwindigkeit · Vitesse de Levage · Velocidad de Elevación · Velocidade de içamento · Скорость подъема (50Hz)



Additional Specifications · Altre movimentazioni · Weitere Leistungsdaten · Spécifications additionnelles · Otras prestaciones · Especificações adicionais · Дополнительные спецификации (50Hz)

	LFC 110 R00	2,5 min	110 kW
	RCC 2 2 132 P	0 → 0,65 r.p.m.	2 x 17 kW
	TVF 4RT 4M9	0 → 21 m/min	4 x 9 kW




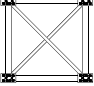
















TRANSPORTATION

Trasporto · Transport · Transport · Transporte · Transporte · Транспортировка

Packing list

Undercarriage

CTL 630B-32	DESCRIPTION · DESCRIZIONE · BESCHREIBUNG · DESCRIPTION · DESCRIPCION · DESCRICÃO · ОПИСАНИЕ	LENGTH · LUNGHEZZA · LÄNGE · LONGUEUR · LONGITUD · COMPRIMENTO · ДЛИНА	WIDTH · LARGHEZZA · BREITE · LARGEUR · ANCHURA · LARGURA · ШИРИНА	HEIGHT · ALTEZZA · HÖHE · HAUTEUR · ALTURA · ALTURA · · ВЬСОТА	QUANTITY · QUANTITÀ · MENGE · QUANTITÉ · · CANTIDAD · QUANTIDADE · КОЛИЧЕСТВО	WEIGHT · PESO · GEWICHT · POIDS · PESO · PESO · BEC
	EXPEDABLE FOUNDATION ANCHOR HD23 22	2,13 m	0,60 m	0,60 m	4	452 kg
	EXPEDABLE FOUNDATION ANCHOR HD23 26	2,55 m	0,80 m	0,80 m	4	827 kg
	EXPEDABLE FOUNDATION ANCHOR HD23 26 6 SCREWS	2,55 m	0,80 m	0,80 m	4	960 kg
	BASE PLATE JIG HD23 22/26	2,50 m	2,30 m	0,24 m	1	600 kg
	"I" BALLAST FOR 10x10m UNDERCARRIAGE	2,20 m	2,20 m	1,00 m	4	11600 kg
	"E" BALLAST FOR 10x10m UNDERCARRIAGE	2,20 m	2,20 m	1,00 m	4	11700 kg
	"S" BALLAST FOR 8x8m UNDERCARRIAGE	5,00 m	2,20 m	0,30 m	1	5000 kg
	"SRB" BALLAST FOR 8x8m UNDERCARRIAGE	2,50 m	1,40 m	0,30 m	1	2500 kg
	"T" BALLAST FOR 10x10m UNDERCARRIAGE	4,80 m	2,60 m	0,30 m	1	7400 kg
	8x8 m UNDERCARRIAGE STRUT MOUNTING TOWER SECTION	2,90 m	2,90 m	2,90 m	1	9150 kg
	8x8 m UNDERCARRIAGE STRUT	4,80 m	0,30 m	2,25 m	4	1820 kg
	8x8 m UNDERCARRIAGE INTERNAL BEAM	4,00 m	0,16 m	0,33 m	4	210 kg
	8x8 m UNDERCARRIAGE EXTERNAL BEAM	5,96 m	0,30 m	0,33 m	4	626 kg

CTL 630B-32	DESCRIPTION · DESCRIZIONE · BESCHREIBUNG · DESCRIPTION · DESCRIPCIÓN · DESCRIÇÃO · ОПИСАНИЕ	LENGTH · LUNGHEZZA · · LANGE · LONGUEUR · · LONGITUD · COMPRIMENTO · ДЛИНА	WIDTH · LARGHEZZA · · BREITE · LARGEUR · · ANCHURA · LARGURA · · ШИРИНА	HEIGHT · ALTEZZA · · HÖHE · HAUTEUR · · ALTURA · ALTURA · · ВЫСОТА	QUANTITY · QUANTITÀ · MENGE · QUANTITÉ · · CANTIDAD · QUANTIDADE · КОЛИЧЕСТВО	WEIGHT · PESO · GEWICHT · POIDS · PESO · PESO · ВЕС
	10x10 m UNDERCARRIAGE STRUT MOUNTING TOWER SECTION	3,00 m	3,00 m	3,10 m	1	10450 kg
	10x10 m LEFT + RIGHT UNDERCARRIAGE STRUT	5,70 m	2,60 m	0,70 m	2 left + 2 right	3825 kg
	CROSSBEAM FOR TRAVELLING 10x10 m UNDERCARRIAGE	7,00 m	2,20 m	0,40 m	2	2030 kg
	10x10 m UNDERCARRIAGE ELECTRICAL BOX SUPPORT PLATFORM FOR TVF 4RT 4M9 TRAVELLING DRIVE UNIT	5,70 m	2,20 m	2,40 m	1	1300 kg
	10x10 m UNDERCARRIAGE ELECTRICAL BOX SUPPORT PLATFORM FOR TSR 4RG 4M8 TRAVELLING DRIVE UNIT	5,60 m	2,10 m	3,70 m	1	645 kg

Tower

	TOWER SECTION HD23 26.6	6,00 m	2,34 m	2,32 m	1	6450 kg* 6300 kg**
	TOWER SECTION HD23 22.6	6,00 m	2,28 m	2,29 m	1	4730 kg* 4675 kg**
	TOWER SECTION HD23 22.3	3,00 m	2,29 m	2,28 m	1	2720 kg* 2660 kg**
	TOWER SECTION HD23 26.12	12,00 m	2,32 m	2,55 m	1	15670 kg*
	TOWER SECTION HD23 26.3	3,00 m	2,34 m	2,32 m	1	3658 kg*
	SLEWING UNIT	3,00 m	2,60 m	2,40 m	1	16195 kg
	UPPER SLEWING RING SUPPORT A-FRAME	2,60 m	2,24 m	2,51 m	1	3350 kg

* inclusive of ladders, platforms and assembly equipment

** with aluminium ladders

TRANSPORTATION

Trasporto · Transport · Transport · Transporte · Transporte · Транспортировка

Cab

CTL 630B-32	DESCRIPTION · DESCRIZIONE · BESCHREIBUNG · DESCRIPTION · DESCRIPCIÓN · DESCRIÇÃO · ОПИСАНИЕ	LENGTH · LUNGHEZZA · LÄNGE · LONGUEUR · LONGITUD · COMPRIMENTO · ДЛИНА	WIDTH · LARGHEZZA · BREITE · LARGEUR · ANCHURA · LARGURA · ШИРИНА	HEIGHT · ALTEZZA · HÖHE · HAUTEUR · ALTURA · ALTURA · · ВЬСОТА	QUANTITY · QUANTITÀ · MENGE · QUANTITÉ · · CANTIDAD · QUANTIDADE · КОЛИЧЕСТВО	WEIGHT · PESO · GEWICHT · POIDS · PESO · PESO · ВЕС
-------------	--	--	--	---	--	---



CAB
SUPPORT PLATFORM
UNIT

6,80 m


2,30 m

2,62 m

1

4370 kg

Upper Part

	LEVERAGE-A	5,72 m	2,10 m	1,00 m	1	1830 kg
---	------------	--------	--------	--------	---	---------



LEVERAGE-A
LOCK FRAME

2,00 m

1,40 m

0,20 m

1

300 kg



LEVERAGE-B

8,76 m

3,11 m

0,45 m

1

1630 kg



LEVERAGE-B
FORK PLATFORM

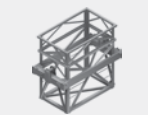
4,20 m

1,00 m

0,15 m

1

230 kg



MOBILE BALLAST
BASKET

3,30 m

3,00 m

1,76 m

1

2140 kg



LEVERAGE-C

3,45 m

3,30 m

0,36 m

1

1630 kg



COUNTERJIB

8,71 m

3,20 m

2,30 m

1

10150 kg



PLATFORM FOR COUNTERJIB
FOOT-BOARD

8,87 m

1,00 m

0,70 m

1 LEFT
+
1 RIGHT

640 kg



COUNTERJIB A-FRAME
HEAD

6,00 m

2,30 m

1,94 m

1

4470 kg



COUNTERJIB A-FRAME
FRAME

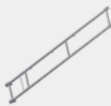
11,30 m

2,20 m

0,80 m

1

5260 kg



COUNTERJIB A-FRAME
TIE-BAR

13,80 m

2,20 m

0,45 m

1

1920 kg

CTL 630B-32	DESCRIPTION · DESCRIZIONE · BESCHREIBUNG · DESCRIPTION · DESCRIPCIÓN · DESCRIÇÃO · ОПИСАНИЕ	LENGTH · LUNGHEZZA · LÄNGE · LONGUEUR · LONGITUD · COMPRIMENTO · ДЛИНА	WIDTH · LARGHEZZA · BREITE · LARGEUR · ANCHURA · LARGURA · ШИРИНА	HEIGHT · ALTEZZA · HÖHE · HAUTEUR · ALTURA · ALTURA · · ВЬСОТА	QUANTITY · QUANTITÀ · MENGE · QUANTITÉ · · CANTIDAD · QUANTIDADE · КОЛИЧЕСТВО	WEIGHT · PESO · GEWICHT · POIDS · PESO · PESO · ВЕС
	MOBILE SHEAVE BLOCK FOR LUFFING ROPE (with sheaves)	0,41 m	0,24 m	0,06 m	1	530 kg
	JIB SECTION-01	10,60 m	2,10 m	2,60 m	1	5100 kg
	JIB SECTION-02	10,60 m	2,10 m	2,10 m	1	2460 kg
	JIB SECTION-03	10,50 m	2,10 m	2,10 m	1	2140 kg
	JIB SECTION-04	10,40 m	2,10 m	2,10 m	1	2000 kg
	JIB SECTION-05	5,35 m	2,10 m	2,10 m	1	1070 kg
	JIB SECTION-06	10,50 m	2,10 m	2,10 m	1	1820 kg
	JIB SECTION-07	10,60 m	2,10 m	2,30 m	1	2900 kg
	2-FALLS LINE HOIST BLOCK	1,50 m	1,54 m	1,30 m	1	800 kg
	4-FALLS LINE HOIST BLOCK	1,44 m	0,80 m	0,47 m	1	700 kg
	132AFC160 HOIST WINCH (without rope and with brake)	4,70 m	2,24 m	1,86 m	1	10380 kg
	110LFC LUFFING WINCH (without rope)	3,20 m	2,00 m	1,80 m	1	6350 kg
	3AFC28 SERVICE WINCH (with rope)	0,97 m	0,46 m	0,85 m	1	280 kg

NOTES

Appunti · Notizen · Note · Apunte · Notas · Заметки

TEREX CRANES

Tower Cranes

Via delle Innovazioni, 17
33074 Fontanafredda (PN)
Italy

Ph: +39 0434 989111
Email: info.cranes@terex.com

Rough Terrain Cranes

Via Cassoletta, 76 - Fraz. Crespellano
40053 Valsamoggia (BO)
Italy

Ph: +39 051 6501011
Email: info.cranes@terex.com

December 2019. Product specifications and prices are subject to change without notice or obligation. The photographs and/or drawings in this document are for illustrative purposes only. Refer to the appropriate Operator's Manual for instructions on the proper use of this equipment. Failure to follow the corresponding Operator's Manual when using our equipment or to otherwise act responsibly may result in serious injury or death. The only warranty applicable to our equipment is the standard written warranty applicable to the particular product and sale and Terex makes no other warranty, express or implied. Products and services listed may be trademarks, service marks or trade-names of Terex Corporation and/or its subsidiaries in the USA and other countries. All rights are reserved. Terex, the Terex Crown design and Works For You are trademarks of Terex Corporation or its subsidiaries.

Dicembre 2019. Specifiche e prezzi dei prodotti sono soggetti a modifica senza preavviso o altro obbligo. Le fotografie e i disegni in questo documento hanno esclusivamente scopo illustrativo. Consulta il Manuale dell'operatore pertinente per trovare istruzioni per l'utilizzo corretto di questo macchinario. La mancata osservanza delle istruzioni contenute nel relativo Manuale dell'operatore durante l'uso del macchinario e altri comportamenti irresponsabili possono provocare gravi lesioni, anche mortali. L'unica garanzia applicabile ai nostri macchinari è la garanzia scritta standard applicabile al particolare prodotto e alla particolare vendita e Terex è esonerata dal fornire qualsiasi altra garanzia, esplicita o implicita. I prodotti e servizi elencati possono essere dei marchi di fabbrica, marchi di servizio o nomi commerciali di Terex Corporation, e/o delle rispettive società affiliate negli Stati Uniti d'America e in molte altre nazioni. Tutti i diritti riservati. Terex, il marchio Terex Crown e Works for You sono marchi di proprietà di Terex Corporation o delle sue società affiliate.

Dezember 2019. Irrtum und Änderungen der Produktspezifikationen vorbehalten. Die in diesem Dokument enthaltenen Fotos und/oder Zeichnungen dienen rein anschaulichen Zwecken. Für den sachgemäßen Gebrauch der Maschinen ist das entsprechende Bedienerhandbuch heranzuziehen. Unsachgemäßer Umgang mit bzw. unsachgemäßer Einsatz unserer Maschinen kann zu schweren gesundheitlichen Schäden bis hin zum Tod führen. Für unsere Produkte wird ausschließlich die entsprechende, schriftlich niedergelegte Standardgarantie gewährt. Terex leistet keinerlei darüber hinausgehende Garantie, weder ausdrücklich noch stillschweigend. Die genannten Produkte und Dienstleistungen sind in den USA und anderen Ländern ggf. Marken, Dienstleistungsmarken oder Handelsnamen der Terex Corporation und/oder ihrer Tochtergesellschaften. Alle Rechte vorbehalten. Terex, das Terex Kronenlogo und Works For You sind Marken in Eigentum der Terex Corporation bzw. ihrer Tochtergesellschaften.

Décembre 2019. Les caractéristiques et prix des produits peuvent faire l'objet de modifications sans notification préalable. Les photographies ou dessins présentés dans ce document servent uniquement à des fins d'illustration. Pour connaître les instructions relatives à l'utilisation correcte de cet équipement, veuillez vous référer au manuel de l'utilisateur correspondant. Le non-respect du manuel d'utilisateur correspondant lors de l'utilisation de notre équipement ou des actes irresponsables risquent de provoquer de graves blessures, voire un décès. La seule garantie applicable à nos équipements est la garantie écrite standard applicable au produit et à la vente spécifiques. Terex ne délivre aucune autre garantie, expresse ou implicite. Les produits et les services mentionnés peuvent être des marques, des marques de service ou des appellations commerciales de Terex Corporation et/ou de ses filiales aux États-Unis et dans d'autres pays. Tous droits réservés. Terex, le design Terex Crown et Works For You sont des marques déposées de Terex Corporation ou de ses filiales.

Diciembre 2019. Las especificaciones y los precios de los productos están sujetos a cambios sin necesidad de previo aviso ni ninguna otra obligación. Las fotografías y/o dibujos de este documento tienen un fin meramente ilustrativo. Consulte el correspondiente manual de instrucciones del operario para obtener más información sobre el uso correcto de esta maquinaria. No respetar el manual del operario al utilizar la maquinaria o actuar de forma irresponsable puede provocar lesiones graves e incluso mortales. La única garantía aplicable a nuestra maquinaria es la garantía escrita estándar de cada producto y venta. Terex no amplía dicha garantía de forma expresa ni implícita. Los productos y servicios mencionados pueden ser marcas comerciales, marcas de servicio o nombres de marca de Terex Corporation o de alguna de sus filiales en Estados Unidos y otros países. Todos los derechos reservados. Terex, el diseño de la corona Terex y Works For You son marcas registradas de Terex Corporation o de sus filiales.

Dezembro 2019. Especificações e preços dos produtos sujeitos a alteração sem aviso prévio ou obrigações. As fotografias e/ou desenhos neste documento são apenas para fins ilustrativos. Consulte o respectivo Manual do Operador para instruções sobre o uso correto deste equipamento. Deixar de acompanhar o respectivo Manual do Operador ao usar o nosso equipamento ou, por qualquer outra forma, deixar de agir de maneira responsável pode resultar em lesões corporais graves ou a morte. A única garantia aplicável ao nosso equipamento é a garantia padrão por escrito correspondente ao produto específico vendido. A Terex não dá outras garantias, expressas ou implícitas. Os produtos e serviços listados podem ser marcas comerciais, marcas de serviço ou nomes-fantasia da Terex Corporation e/ou suas subsidiárias nos EUA e em outros países. Todos os direitos reservados. Terex, o desenho da Coroa Terex e a expressão Works For You são marcas comerciais da Terex Corporation ou suas subsidiárias.

декабрь 2019 г. года Технические характеристики и цены могут изменяться без предварительного уведомления и без каких-либо обязательств для производителя. Фотографии и (или) чертежи в настоящем документе служат только в качестве иллюстраций. Инструкции по надлежащей эксплуатации данного оборудования см. в соответствующем руководстве для оператора. Невыполнение указаний соответствующих руководств для оператора при эксплуатации оборудования или другие безответственные действия могут повлечь серьезные травмы или смерть. Единственной гарантией, действующей в отношении нашего оборудования, является стандартная форма письменной гарантии на данный тип оборудования и на условия его продажи. Terex не дает никаких других гарантий: ни ясно выраженных, ни подразумеваемых. Перечисленные продукты и услуги могут быть торговыми марками, знаками обслуживания или торговыми наименованиями Terex Corporation и / или ее дочерних компаний в США и других странах. Все права защищены. Terex, изображение короны Terex и Works for You являются торговыми марками, принадлежащими корпорации Terex или ее дочерним компаниям.



www.terex.com/cranes

Brochure Reference: TC-DS-M-E/I/G/F/S/P/R-CTL 630B-32-12/19



WORKS FOR YOU.™